




MT-INSPECTION

Final Random Inspection Report

Report No.: MT-20260408-001(SR)

GENERAL SUMMARY:

Client:	-	
PO No.:	RHD638、RHD602、RHD691	
Item No.:	Pressurecooker	
Product Name:	Pressurecooker	
Quantity:	6pcs	
Inspection location:	Zhongshan City, Guangdong Province	
Supplier:	Zhongshan Ronghai Electrical Appliance Technology Co., LTD	
Date of inspection:	Feb 01,2026	

OVERALL CONCLUSION:

Inspection criteria	Passed	Failed	Pending	Comments
Quantity available:	×			
Product Conformity:	×			Remark 2,3,4
Workmanship:	×			
Test and measurement:			×	Remark 5.6.7
Labeling:			×	Remark 8.
Packing and shipping mark:			×	Remark 1
Result:	<input type="checkbox"/> Acceptable		<input type="checkbox"/> Reject	<input checked="" type="checkbox"/> Pending

SPECIAL REMARK:

1. Only 6pcs unpackaged products were found at the scene.
2. The relay does not have a CDF filing
3. The pressure-sensitive resistor does not have a CDF filing
4. The model number is not visible on the PCB board
5. A chrysanthemum gasket plate needs to be added at the grounding point
6. The fuse protection test can only be performed on one unit; the three types of fuses are of the same specifications
7. The factory did not provide the CDF table for this product; instead, it only offered CB reports for other models
8. No packaging material information available

AVAILABLE QUANTITY:

Order No.	Item No.	Order Qty		Packed		Not finished		Not packed		Inspect Qty	
		pcs	ctn	pcs	ctn	pcs	ctn	pcs	ctn	pcs	ctn
RHD638	Pressurecooker	2	0	0	0	0	0	2	0	2	0
RHD602	Pressurecooker	2	0	0	0	0	0	2	0	2	0
RHD691	Pressurecooker	2	0	0	0	0	0	2	0	2	0
Total:		6	0	0	0	0	0	6	0	6	0



MT-INSPECTION

Final Random Inspection Report

Report No.: MT-20260408-001(SR)

Inspection standard: <i>ANSI/ASQC Z1.4-2003</i> Sampling plan: <i>Single, Normal</i> Inspection level: 100% AQL: Critical: Not Allowed.	Sample Size:6pcs			
	Critical	Major	Minor	
	AQL:	0	2.5	4.0
	Defects Found:	0	0	0
	Max. Allowed:	0	-	-

WORKMANSHIP:						
Item No.	Sample size	Defective rate	Defects Description	Cri	Maj	Min
RHD638	2pcs	0%	NA	0	0	0
RHD602	2pcs	0%	NA	0	0	0
RHD691	2pcs	0%	NA	0	0	0
Total defect:				0	0	0
Allowed:				0	-	-
Result:				Pass		

Defect Pictures:	
NA	NA

PRODUCT CONFORMITY & ON-SITE TESTS			
Check Points & On-site Tests	Sample Size	Criteria	Result & Remarks
Function test	6pcs	The function is used normally	PASS
High voltage, grounding test	6pcs	1500V, 2s,5mA/25A100M Ω 2S	PASS
Power consumption test	3pcs	AC230V, 1000W+5%/-10%	PASS
Stability test	3pcs	Filling the water, then place the kettle on a 15 degree ramp and rotate the kettle to the most unfavorable position	PASS
Rubbing test	3pcs	Use cotton dripped with alcohol, rub the marking on rating label and silk-screen printing or electro-plating by hand for 15 seconds. Marking is clear after the rub, no peel off or lift the edge of rating label	PASS
3M tape check	1pc	No peel off the color when stick with 3M tape.	PASS
Running test	3pcs	Max setting, running or cycles for 4 hours, no malfunction and safety issue	PASS
Odor check	6pcs	No bad odor	PASS
Capacity check	3pcs	Meet the requirements	PASS
Pressure test	3pc	Meet the requirements	PASS
Abnormal test	1pc	Short-circuit the thermostat and check the thermal link function	PASS



Final Random Inspection Report

Critical Component Data (Conform to Type Test Report, Specification):

Item No.	Component	Trade Mark	Rating	Approval
RHD638	Plug	GuangdongYinchengElectric Appliance Co. Ltd.,	YC-F16 AC 250V,16 A	--
	Power cord	GuangdongYinchengElectric Appliance Co. Ltd.,	H05VV-F 3G 0,75mm2	--
	Connector	GuangdongYinchengElectric Appliance Co. Ltd.,	YC-L10 AC 250 V, 10 A	--
	Fuse	Zhongshan ShengPing ThermalProtectors Co., Ltd.	SPF-139.10A250V	--
	Internal wire	ZHONG SHAN CITYBOYU WIRE CO LTD	3122 300V,200°C,18AWG	--
	Connector	Zhe Jiang Bei Er JiaElectronic Co., Ltd.	ST-A01-002L AC250 V,10A	--
	Heatingelement	Zhongshan RonghaiElectrical TechnologyCo., LTD	YH AC 220-240V1000W	--
	Pressureregulator	Yuanlong	KSD203 AC250V, 10A,T200, rated	--
	X capacitance	TentaElectricindustrial Co. Ltd.	MEX-X2 AC275V,0.1uF,	--
	PCB	Kingboard LaminatesHoldings Limited	KB-3150, V-0	--
	Relay	--	GK3FF-5VDC-SA	--
	Current fuse	--	5TE 2A250V	--
	Varistor	--	VDR10D471K	--
	RHD602	Plug	GuangdongYinchengElectric Appliance Co. Ltd.,	YC-F16 AC 250V,16 A
Power cord		GuangdongYinchengElectric Appliance Co. Ltd.,	H05VV-F 3G 0,75mm2	--
Connector		GuangdongYinchengElectric Appliance Co. Ltd.,	YC-L10 AC 250 V, 10 A	--
Fuse		Zhongshan ShengPing ThermalProtectors Co., Ltd.	SPF-139.10A250V	--
Internal wire		ZHONG SHAN CITYBOYU WIRE CO LTD	3122 300V,200°C,18AWG	--
Connector		Zhe Jiang Bei Er JiaElectronic Co., Ltd.	ST-A01-002L AC250 V,10A	--
Heatingelement		Zhongshan RonghaiElectrical TechnologyCo., LTD	YH AC 220-240V1000W	--
Pressureregulator		Yuanlong	KSD203 AC250V, 10A,T200, rated	--
X capacitance		TentaElectricindustrial Co. Ltd.	MEX-X2 AC275V,0.1uF,	--
PCB		Kingboard LaminatesHoldings Limited	KB-3150, V-0	--
Relay		--	GK3FF-5VDC-SA	--
Current fuse		--	5TE 2A250V	--
Varistor		--	VDR10D471K	--



MT-INSPECTION

Final Random Inspection Report

Report No.: MT-20260408-001(SR)

RHD691	Plug	GuangdongYinchengElectric Appliance Co. Ltd.,	YC-F16 AC 250V,16 A	--
	Power cord	GuangdongYinchengElectric Appliance Co. Ltd.,	H05VV-F 3G 0,75mm2	--
	Connector	GuangdongYinchengElectric Appliance Co. Ltd.,	YC-L10 AC 250 V, 10 A	--
	Fuse	Zhongshan ShengPing ThermalProtectors Co., Ltd.	SPF-139.10A250V	--
	Internal wire	ZHONG SHAN CITYBOYU WIRE CO LTD	3122 300V,200°C,18AWG	--
	Connector	Zhe Jiang Bei Er JiaElectronic Co., Ltd.	ST-A01-002L AC250 V,10A	--
	Heatingelement	Zhongshan RonghaiElectrical TechnologyCo., LTD	YH AC 220-240V1000W	--
	Pressureregulator	Yuanlong	KSD203 AC250V, 10A,T200, rated	--
	X capacitance	TentaElectricindustrial Co. Ltd.	MEX-X2 AC275V,0.1uF,	--
	PCB	Kingboard LaminatesHoldings Limited	KB-3150, V-0	--
	Relay	--	GK3FF-5VDC-SA	--
	Current fuse	--	5TE 2A250V	--
	Varistor	--	VDR10D471K	--

PACKING AND ACCESSORIES:

Item No.:	Master shipper (pcs/ctn)	Carton size L×W×H (cm)	Carton weight (Kg)	Color box size L×W×H (cm)	Color box weight (Kg)
RHD638	NA	NA	NA	NA	NA
RHD602	NA	NA	NA	NA	NA
RHD691	NA	NA	NA	NA	NA

PRODUCT SPECIFICATION:

Item No.:	Check point	Client Spec.	Sample 1#	Sample 2#	Sample 3 #
RHD638	Product size	--	34x32x33.4cm	34x32x33.3cm	--
	Middle layer material:	--	1.08mm	1.13mm	--
	Inner pot weight	--	510g	510g	--
	Product weight	--	4.7kg	4.7kg	--
	Power cord size	--	96cm	96cm	--
RHD602	Product size	--	34x28.5x35.5cm	34x28.3x35.5cm	--
	Middle layer material:	--	1.12mm	1.12mm	--
	Inner pot weight	--	510g	510g	--
	Product weight	--	4.3kg	4.3kg	--
	Power cord size	--	96cm	96cm	--
RHD691	Product size	--	32x30x33.5cm	32x30.2x33.5cm	--



MT-INSPECTION

Final Random Inspection Report

Report No.: MT-20260408-001(SR)

	Middle layer material:	--	1.12mm	1.12mm	--
	Inner pot weight	--	508g	510g	--
	Product weight	--	4.8kg	4.8kg	--
	Power cord size	--	96cm	96cm	--

EXPORT CARTON INFORMATION:

Carton:	New export carton	--	Sealing:	Opaque gummed tape	--
Fastening:	Metal staples	--		Transparent gummed tape	--
Strapping:	Nylonx2	--		Paper tape	--
Material:	Ply of corrugated paper	--	Others:	--	

Product photo show:

Item: RHD638



Product View



Product View



Product View



Product View



MT-INSPECTION

Final Random Inspection Report

Report No.: MT-20260408-001(SR)



Product View



Product View



Product View



Product View



Product View



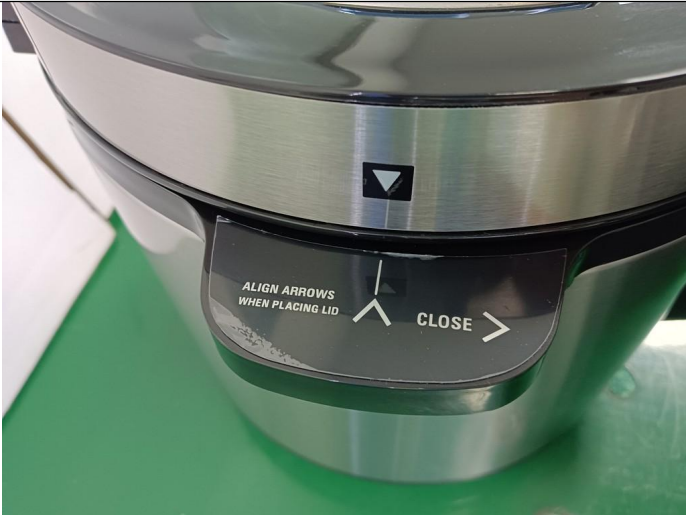
Product View



MT-INSPECTION

Final Random Inspection Report

Report No.: MT-20260408-001(SR)



Product View



Product View



Product View



Product View



Product View



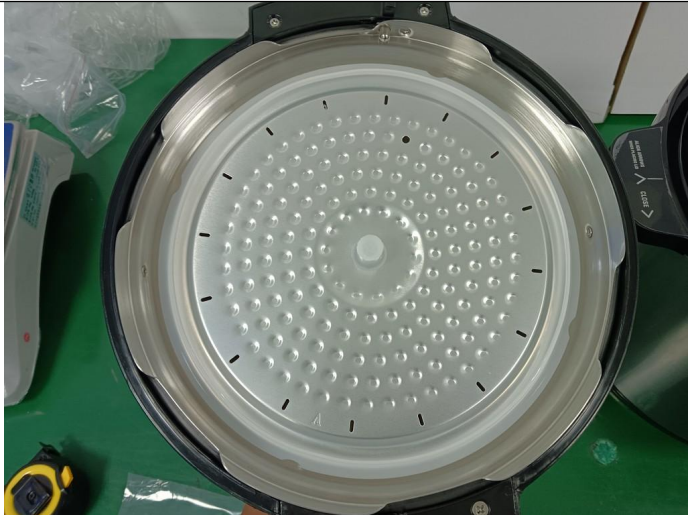
Product View



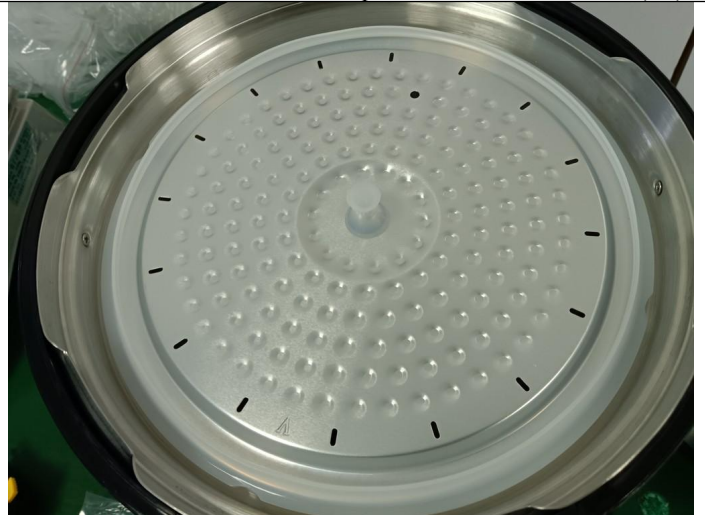
MT-INSPECTION

Final Random Inspection Report

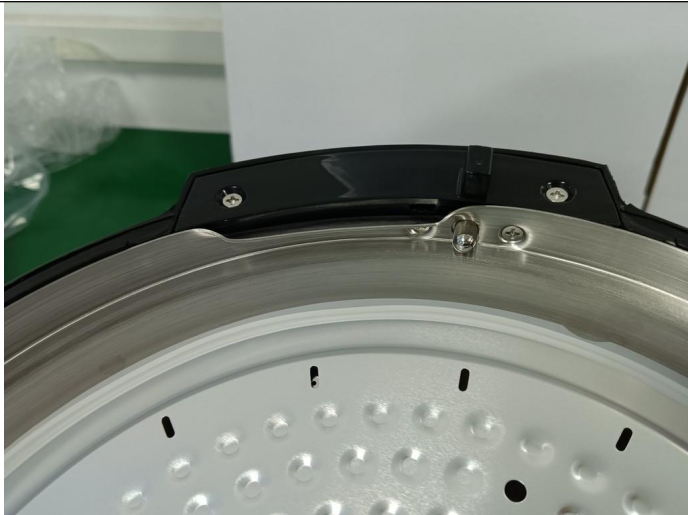
Report No.: MT-20260408-001(SR)



Product View



Product View



Product View



Product View



Product View



Product View



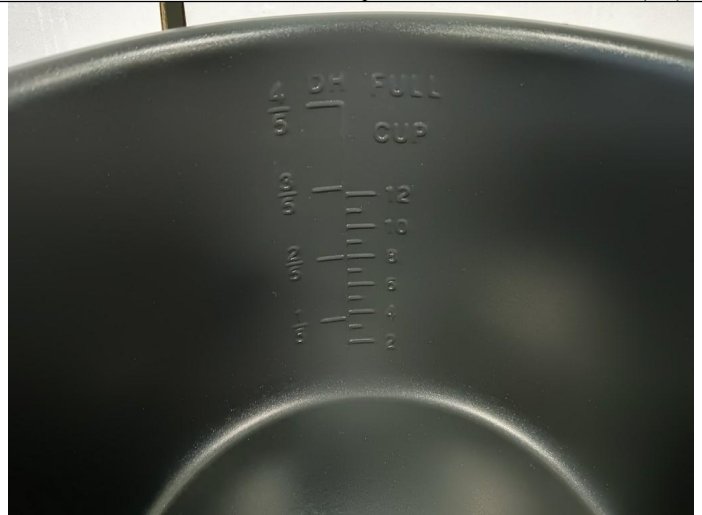
MT-INSPECTION

Final Random Inspection Report

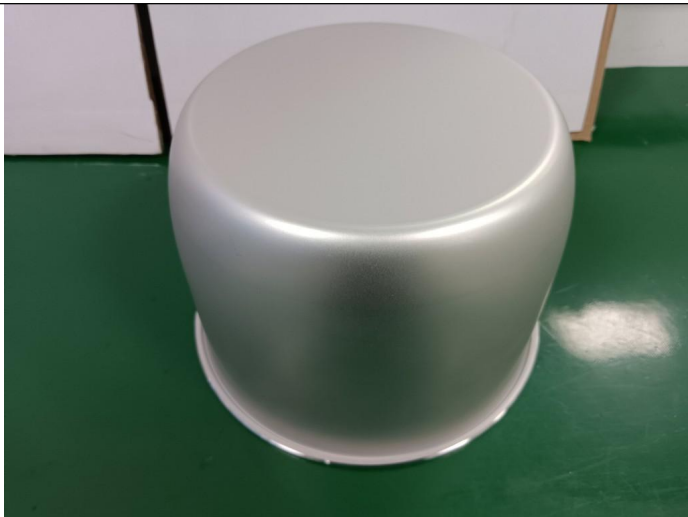
Report No.: MT-20260408-001(SR)



Product View



Product View



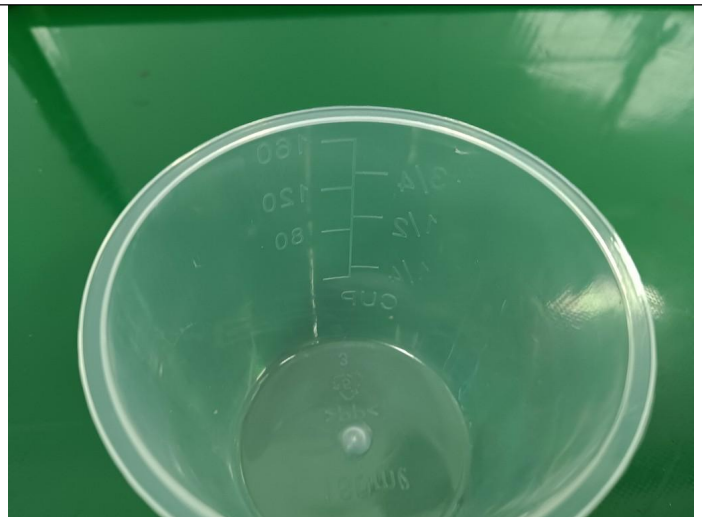
Product View



Product View



Product View



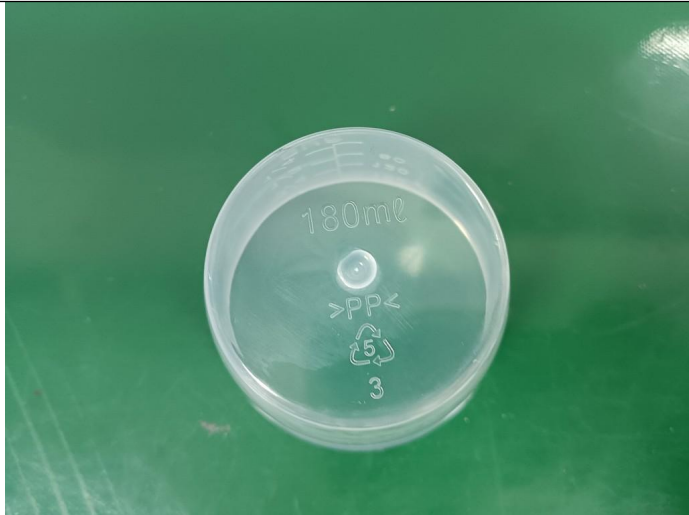
Product View



MT-INSPECTION

Final Random Inspection Report

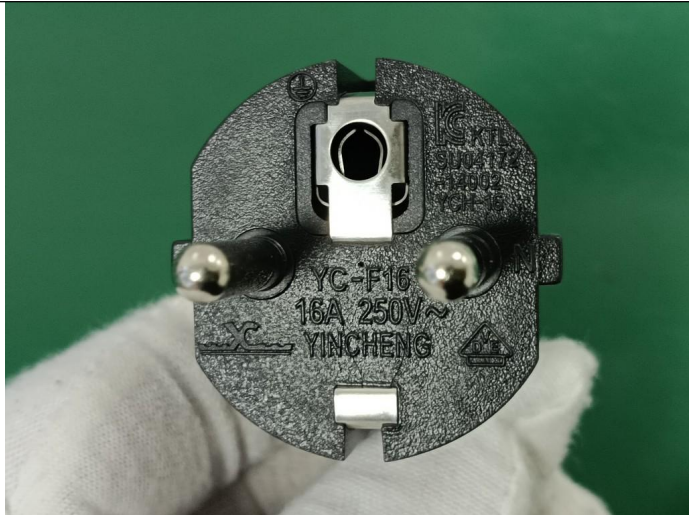
Report No.: MT-20260408-001(SR)



Product View



Product View



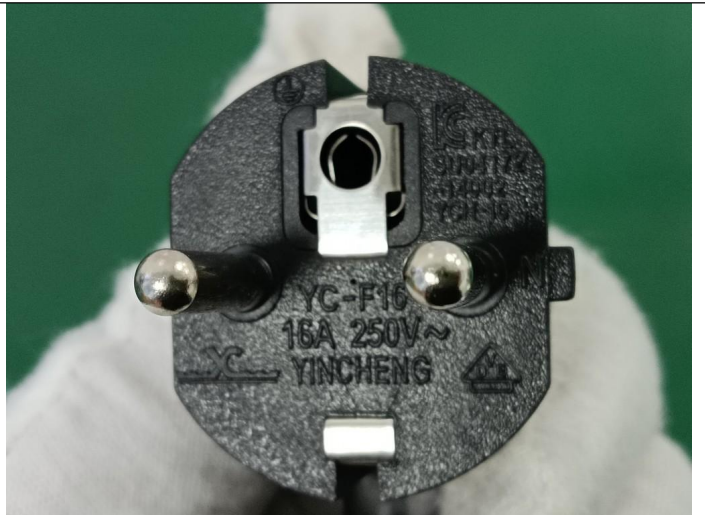
Product View



Product View



Product View



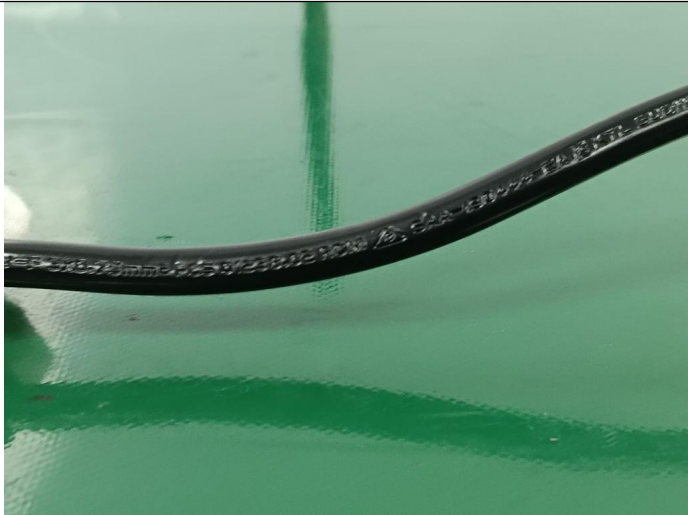
Product View



MT-INSPECTION

Final Random Inspection Report

Report No.: MT-20260408-001(SR)



Product View



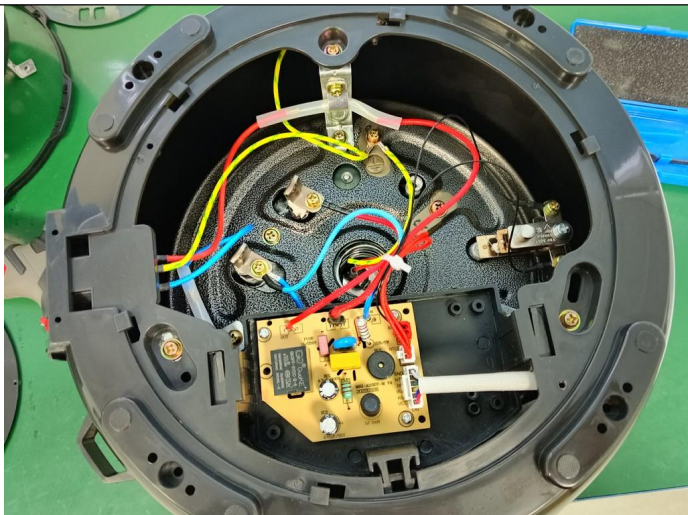
Product View



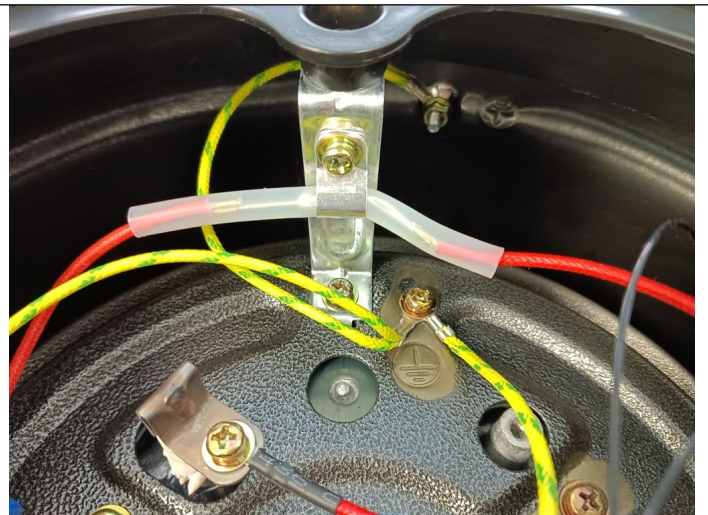
Product View



Product View



Internal inspection



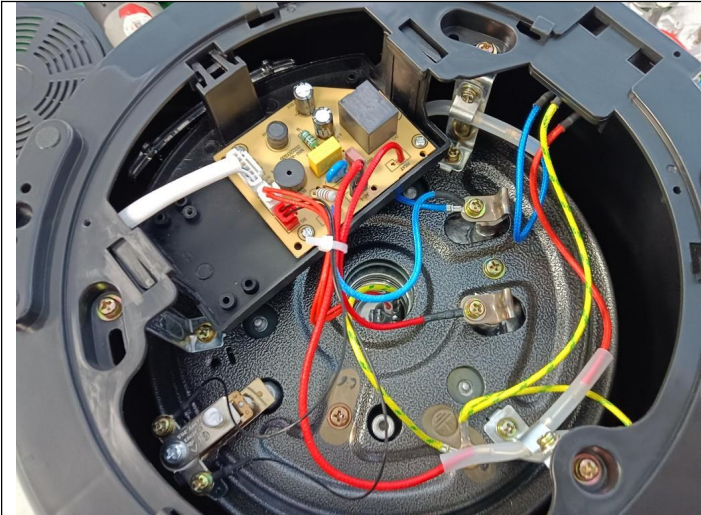
Internal inspection



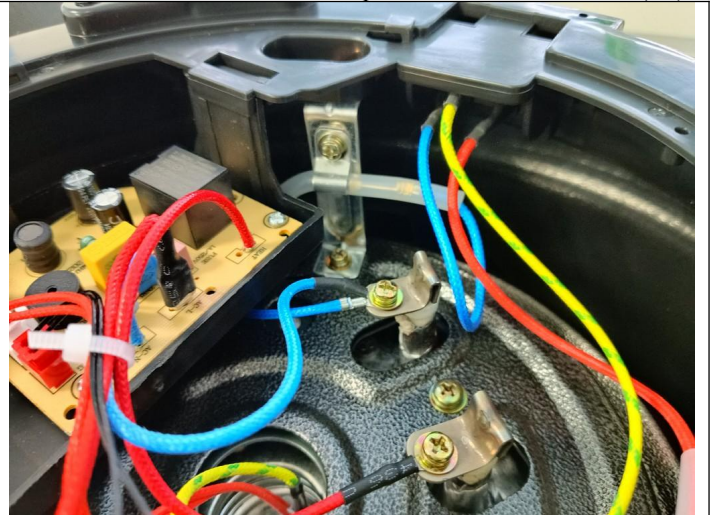
MT-INSPECTION

Final Random Inspection Report

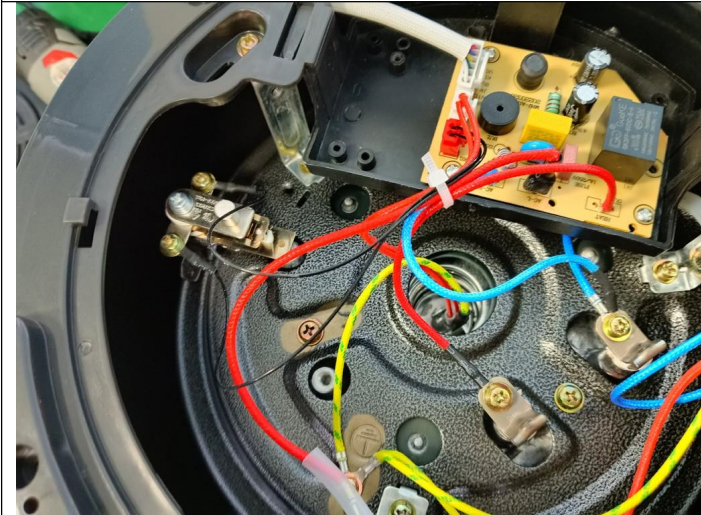
Report No.: MT-20260408-001(SR)



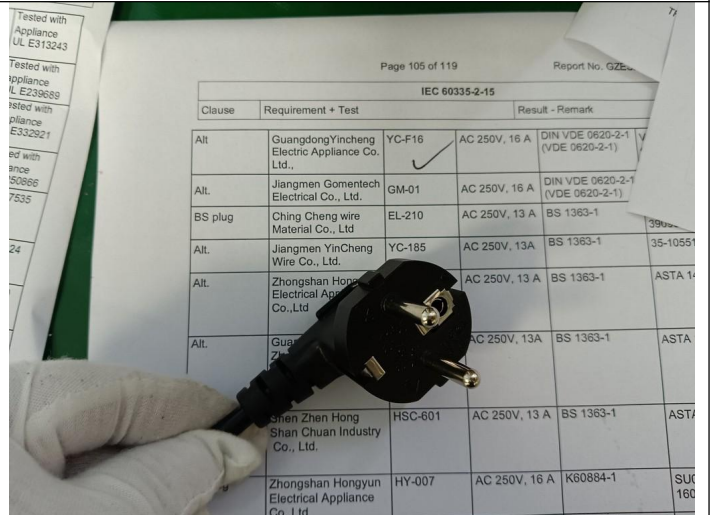
Internal inspection



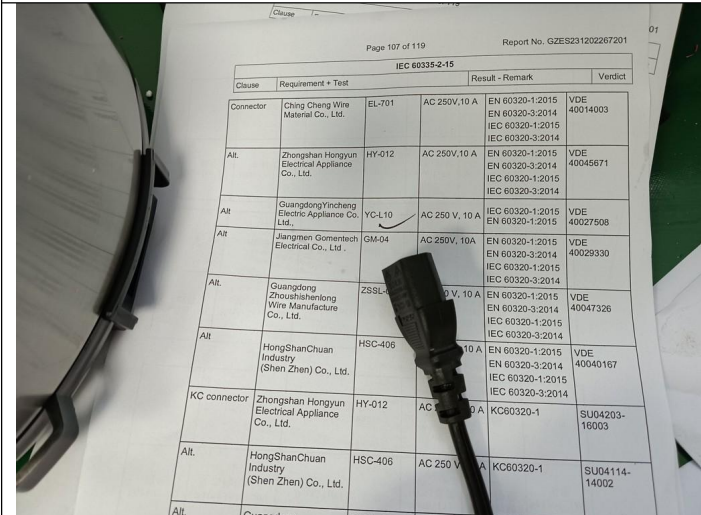
Internal inspection



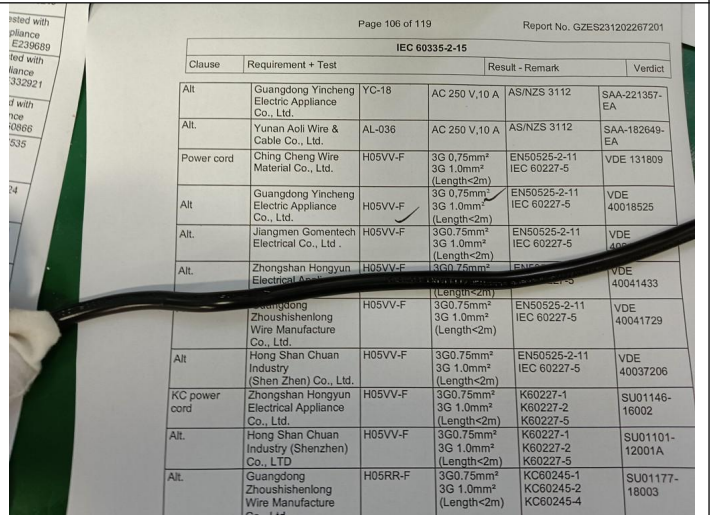
Internal inspection



Internal inspection



Internal inspection



Internal inspection

This reflects our findings at the time and place in inspection. This inspection has been carried out to the best of our knowledge and ability and our responsibility is limited to the exercise of reasonable one. This report does not relieve the sellers from their contractual obligations nor prejudice buyer's right for compensation for any apparent and / or hidden defects not detected during our random inspection or occurring thereafter. This report does not evidence shipment.



MT-INSPECTION

Final Random Inspection Report

Report No.: MT-20260408-001(SR)



Internal inspection



Internal inspection

Europe B.V.		Tf: 144 °C
A.R. Electric Co., Ltd.	F0x 144C	250 V~, 10 A Tf: 144 °C
Zhongshan Sheng Ping Thermal Protectors Co., Ltd.	SPF-139	AC 250 V, 10 A, Tf 142
Zhongshan Ronghai Electrical Technology Co., LTD	YH	AC 220-240V 1000W
Foshan Gaoming Xite Electrical Co., Ltd.	KSD101	AC 250V, 10A T200, 1E5
Zhongshan Huilong Electrical Co., Ltd.	YCD3005	AC 250V, 10A T200, 6E4

Internal inspection

Alt.	Supplier	Part No.	Specs	Standards	Tested v
	Kelin Wire Co., Ltd. (Dongguan)	3122	300V, 200°C, 16-18AWG	IEC/EN 60335-1 IEC/EN 60335-2-15	UL E332
	FOSHAN CITY ZHENG GUAN FLUORPLASTICS WIRE FACTORY	3122	300V, 200°C, 16-18AWG	IEC/EN 60335-1 IEC/EN 60335-2-15	ULE307
	ZhongshanHualan Electronic Co., Ltd.	3122	300V, 200°C, 16-18AWG	IEC/EN 60335-1 IEC/EN 60335-2-15	UL E30
	ZHONG SHAN CITY BOYU WIRE CO LTD	3122	300V, 200°C, 16-18AWG	IEC/EN 60335-1 IEC/EN 60335-2-15	UL E3
Silicone tube	Shenzhen Wahchangwei Industrial Co., Ltd.	SRS-70*	200°C, 600 V	IEC/EN 60335-1 IEC/EN 60335-2-15	Tested v
Wire	Shenzhen Jie New Material Technology Co., Ltd.	PA66	Subjected to GWT650	IEC/EN 60335-1 IEC/EN 60335-2-15	Tested v
Main PCB holder	Zhongshan Ronghai Electric Appliance Technology Co., LTD	PA66	Subjected to GWT650	IEC/EN 60335-1 IEC/EN 60335-2-15	Tested v
LED cover	ZhongshanRonghai ElectricAppliance Technology Co., LTD	PA66	Min. thickness: 1,5 mm	IEC/EN 60335-1 IEC/EN 60335-2-15	Test app
Control panel	ZhongshanRonghai	PP	Min. thickness:	IEC/EN 60335-1	Test

Internal inspection



Internal inspection

Page 108 of 119 Report No. GZES

IEC 60335-2-15				
Clause	Requirement + Test	Result - Remark		
Alt	Zhejiang LECI Electronics Co., Ltd.	DB-14	AC 250 V, 10 A	IEC 60320-1:2015 EN 60320-1:2015
Alt	Zhe Jiang Bei Er Jia Electronic Co., Ltd.	ST-A01-001L ST-A01-002L ST-A01-003J ST-A01-003K	AC 250 V, 10 A	IEC 60320-1:2015 EN 60320-1:2015
Alt	Yueqing Yanhui Electronic Co., Ltd.	DB-14	AC 250 V, 10 A	IEC 60320-1:2015 EN 60320-1:2015
Thermal link (x2)	ShanghaiXinyuan Electronic Co.,Ltd.		V~, 10 A, 41 °C	EN 60691 IEC 60691:2015
Alt.	Therm-O-Disc Europe B.V.	G4250	250 V~, 10 A, Tf: 144 °C	EN 60691 IEC 60691:2015
Alt.			250 V~, 10 A, 4 °C	EN 60691 IEC 60691:2015

Internal inspection

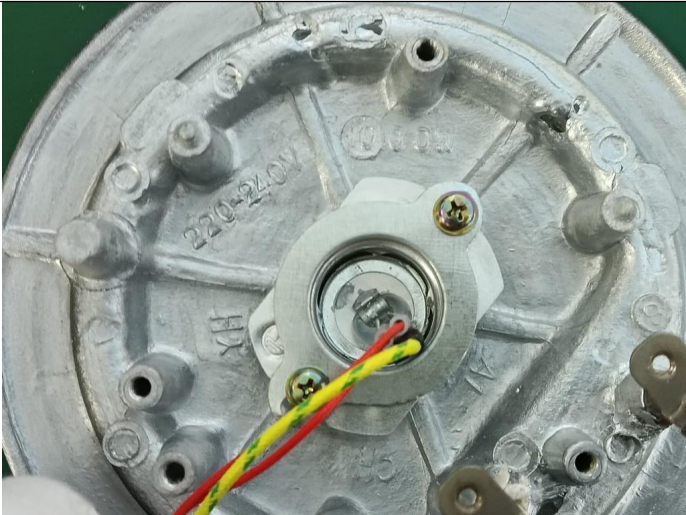
This reflects our findings at the time and place in inspection. This inspection has been carried out to the best of our knowledge and ability and our responsibility is limited to the exercise of reasonable one. This report does not relieve the sellers from their contractual obligations nor prejudice buyer's right for compensation for any apparent and / or hidden defects not detected during our random inspection or occurring thereafter. This report does not evidence shipment.



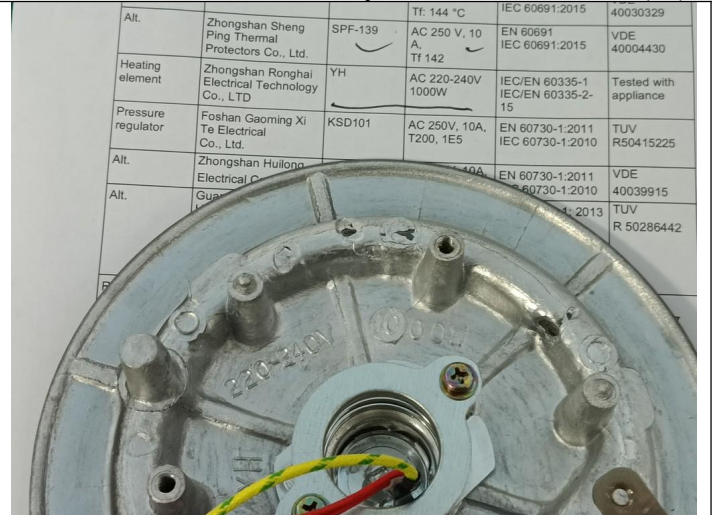
MT-INSPECTION

Final Random Inspection Report

Report No.: MT-20260408-001(SR)



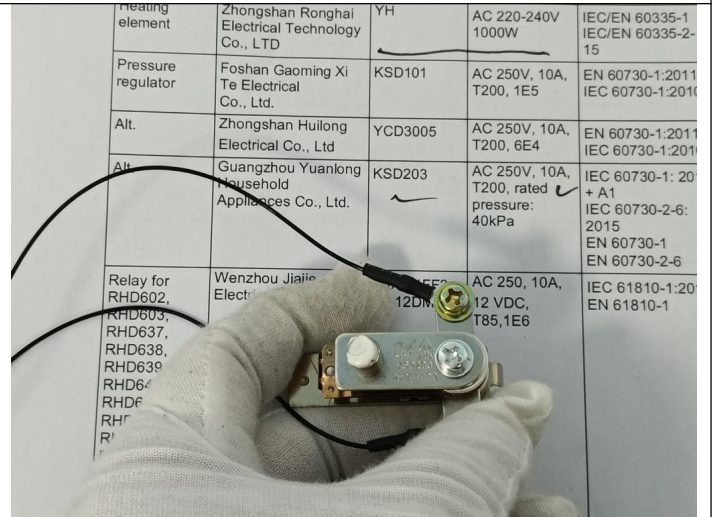
Internal inspection



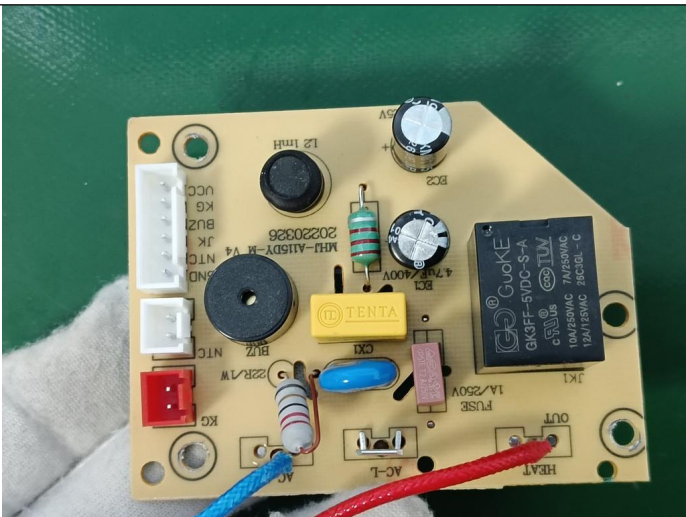
Internal inspection



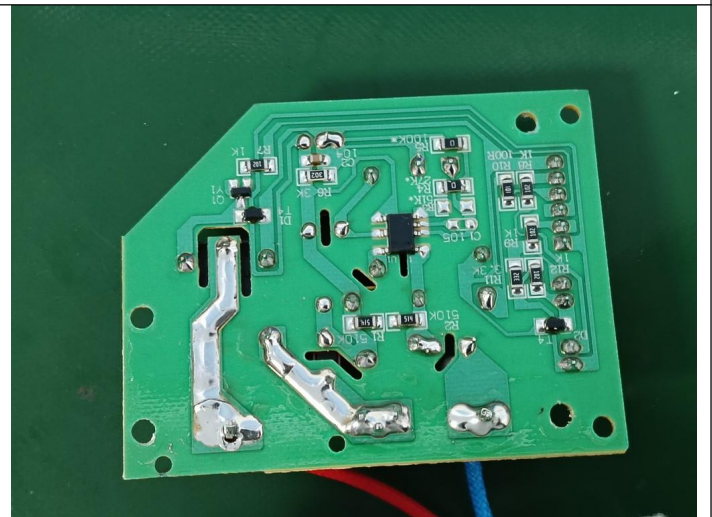
Internal inspection



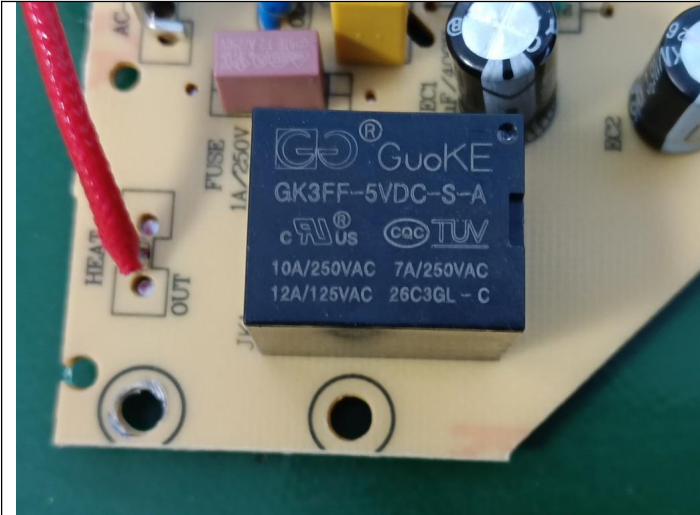
Internal inspection



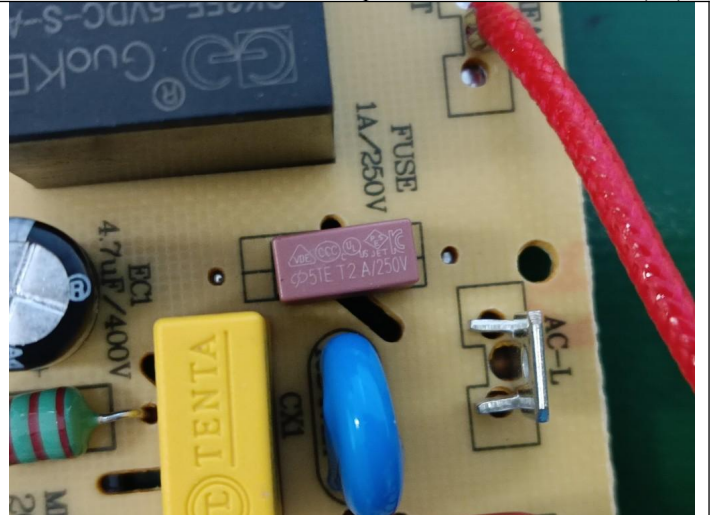
Internal inspection



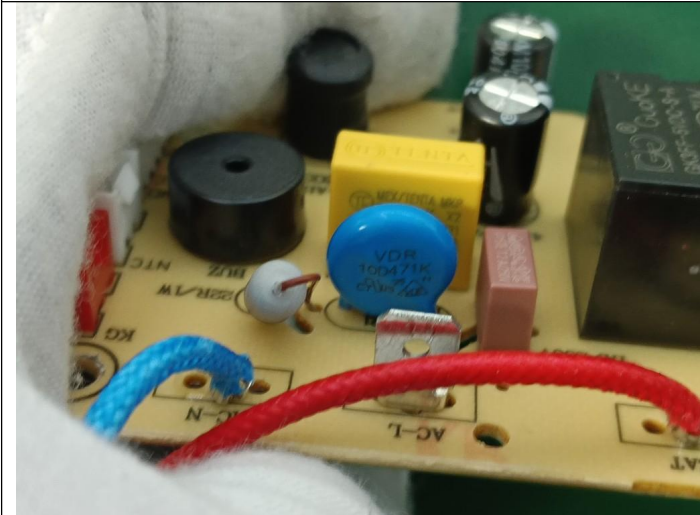
Internal inspection



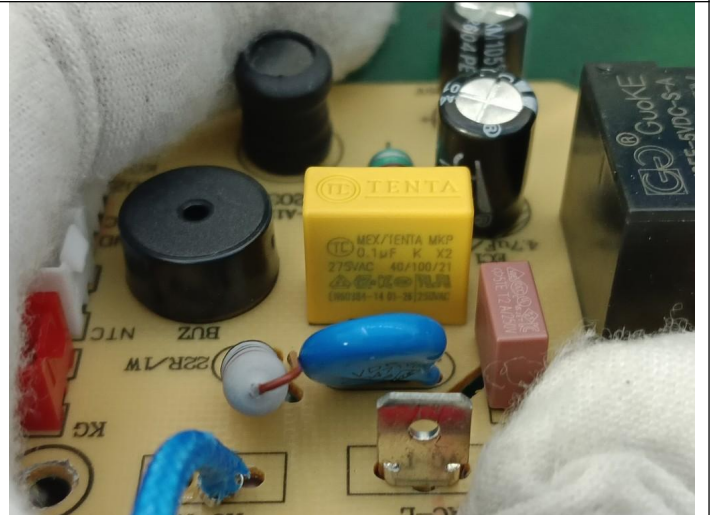
Internal inspection



Internal inspection



Internal inspection

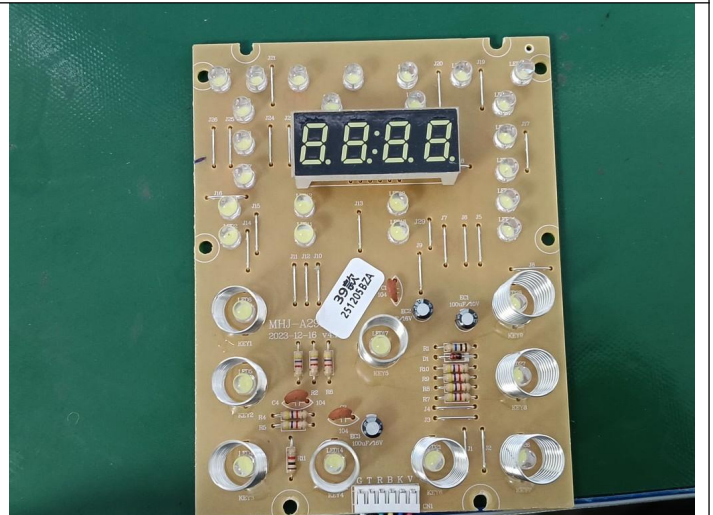


Internal inspection

RHD649, RHD650, RHD651, RHD652, RHD653, RHD654, RHD655, RHD656, RHD657, RHD658, RHD659					
Alt	ShantouXinyin Electronics Technology Co Ltd.	MPX-X2	AC275V,0.1uF	IEC 60384-14:2013 + A1 EN 60384-14	20180702-E470852
Alt	TentaElectric industrial Co. Ltd.	MEX-X2	AC275V,0.1uF	IEC 60384-14:2013 + A1 EN 60384-14	VDE 1191

TRF No. IEC60335_2_15P

Internal inspection



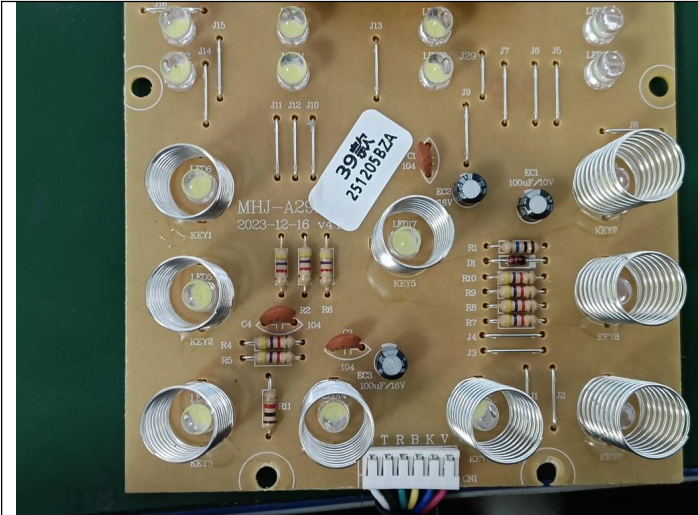
Internal inspection



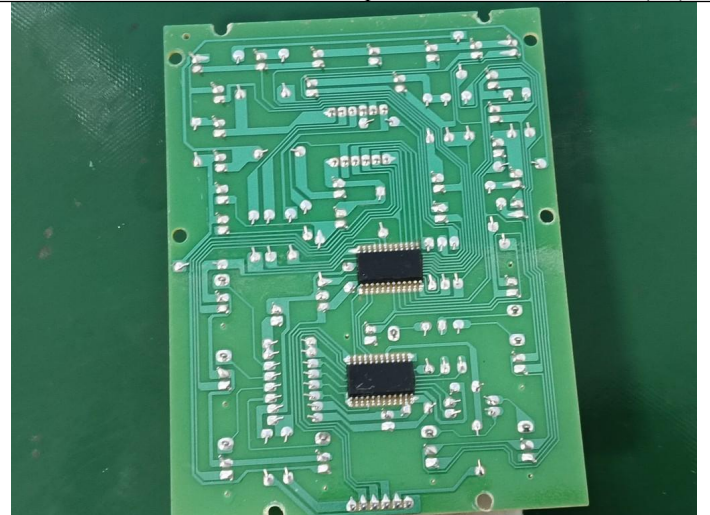
MT-INSPECTION

Final Random Inspection Report

Report No.: MT-20260408-001(SR)



Internal inspection



Internal inspection

Clause	Requirement + Test	Result - Remark	Verdict
Alt.	Cerglass MFG Inc 10D471K 470V, T125	IEC 61051-1-2007 IEC 61051-2-1991 IEC 61051-2-1991	VDE 40028836
PCB	Kingboard Laminates Holdings Limited KB-2150G KB-2150GC KB-2151 KB-3150 KB-3151 KB-3151C KB-3152 KB-6150 KB-6160	V-0 IEC/EN 60335-1 IEC/EN 60335-2-15	Tested with appliance VDE 5722
Alt.	Fujian Lihao Electric Appliance Co., Ltd L40F(CEM-1) V-0, 130°C 0.8-3.2mm	IEC 60695-11-10 IEC 60695-11-10	E193288 E123995
Alt.	Jian Ele Ltd V-0, 130°C 8-1.6mm	IEC 60695-11-10	E123995
Alt.	Sh Ele	IEC/EN 60335-1 IEC/EN 60335-2-15	Tested with appliance UL E1411
Alt.	Ki Ele	IEC/EN 60335-1 IEC/EN 60335-2-15	Tested with appliance UL E12399
Alt.	IEC 60335-1 IEC 60335-2-15	Tested with appliance UL E343825	UL E51171

Internal inspection

Clause	Requirement + Test	Result - Remark	Verdict
Alt.	Cerglass MFG Inc 10D471K 470V, T125	IEC 61051-1-2007 IEC 61051-2-1991 IEC 61051-2-1991	VDE 40028836
PCB	Kingboard Laminates Holdings Limited KB-2150G KB-2150GC KB-2151 KB-3150 KB-3151 KB-3151C KB-3152 KB-6150 KB-6160	V-0 IEC/EN 60335-1 IEC/EN 60335-2-15	Tested with appliance VDE 5722
Alt.	Fujian Lihao Electric Appliance Co., Ltd L40F(CEM-1) V-0, 130°C 0.8-3.2mm	IEC 60695-11-10	E193288
Alt.	Jian Ele Ltd V-0, 130°C 8-1.6mm	IEC 60695-11-10	E123995
Alt.	Sh Ele	IEC/EN 60335-1 IEC/EN 60335-2-15	Tested with appliance UL E1411
Alt.	Ki Ele	IEC/EN 60335-1 IEC/EN 60335-2-15	Tested with appliance UL E12399
Alt.	IEC 60335-1 IEC 60335-2-15	Tested with appliance UL E343825	UL E51171

Internal inspection

Item: RHD602



Product View



Product View



MT-INSPECTION

Final Random Inspection Report

Report No.: MT-20260408-001(SR)



Product View



Product View



Product View



Product View



Product View



Product View



MT-INSPECTION

Final Random Inspection Report

Report No.: MT-20260408-001(SR)



Product View



Product View



Product View



Product View



Product View



Product View



MT-INSPECTION

Final Random Inspection Report

Report No.: MT-20260408-001(SR)



Product View



Product View



Product View



Product View



Product View



Product View



MT-INSPECTION

Final Random Inspection Report

Report No.: MT-20260408-001(SR)



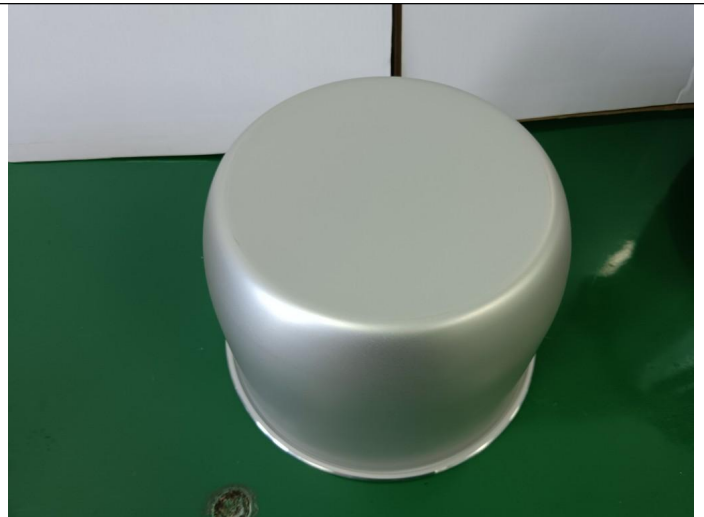
Product View



Product View



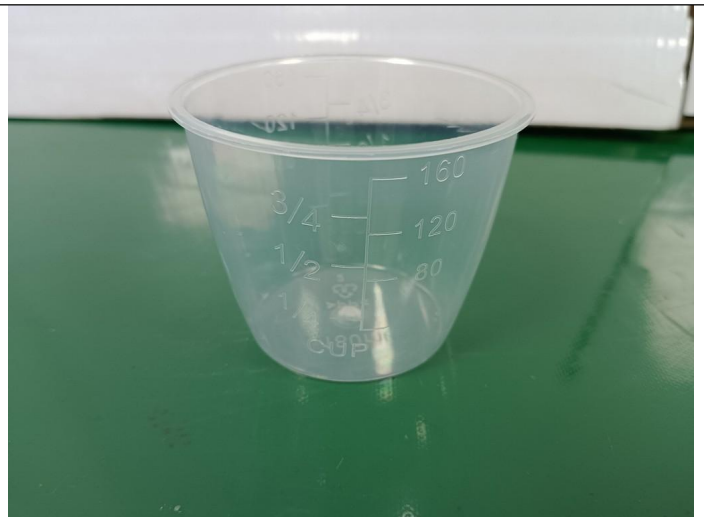
Product View



Product View



Product View



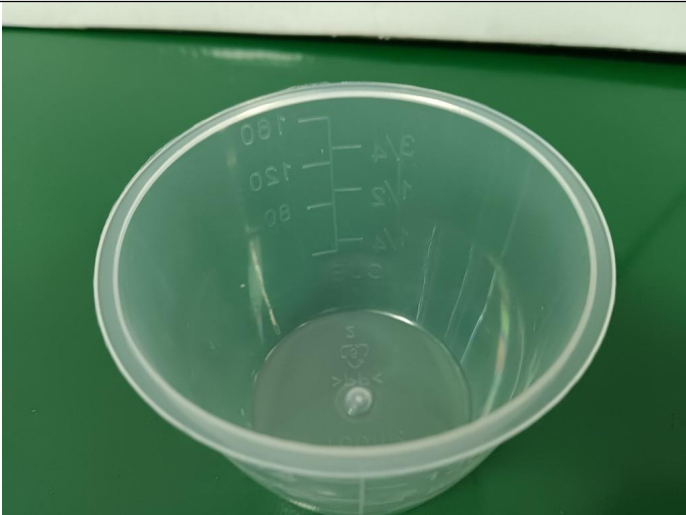
Product View



MT-INSPECTION

Final Random Inspection Report

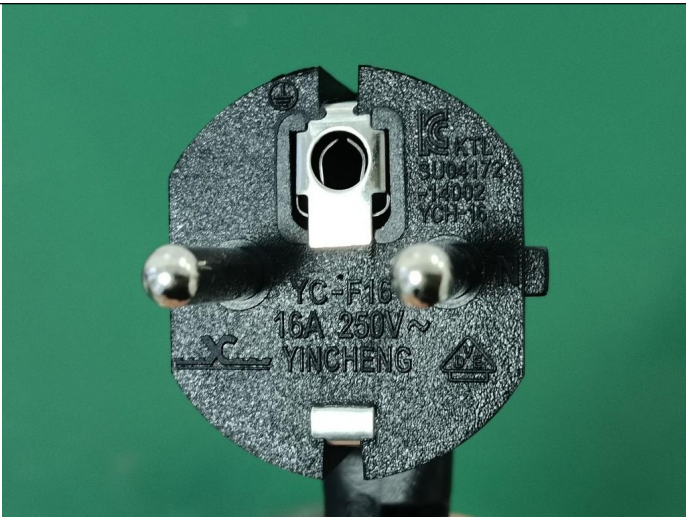
Report No.: MT-20260408-001(SR)



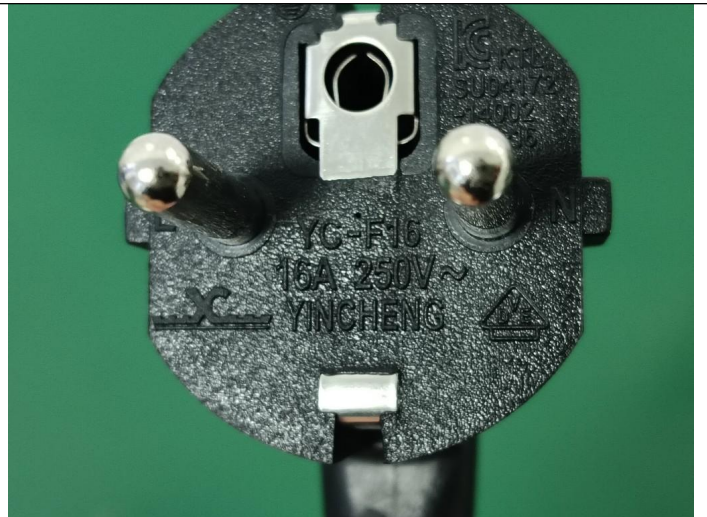
Product View



Product View



Product View



Product View



Product View



Product View



MT-INSPECTION

Final Random Inspection Report

Report No.: MT-20260408-001(SR)



Product View



Product View



Product View



Product View



Product View



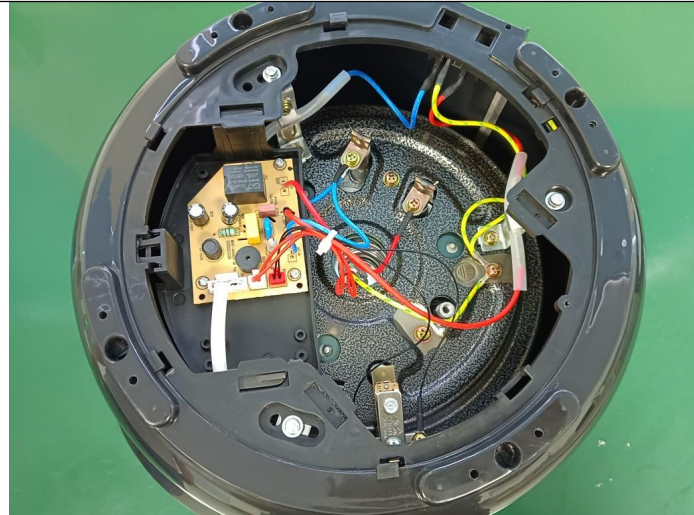
Product View



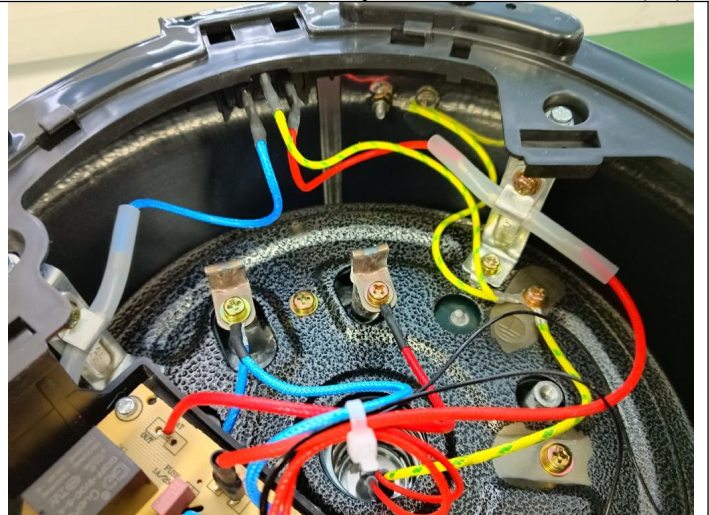
MT-INSPECTION

Final Random Inspection Report

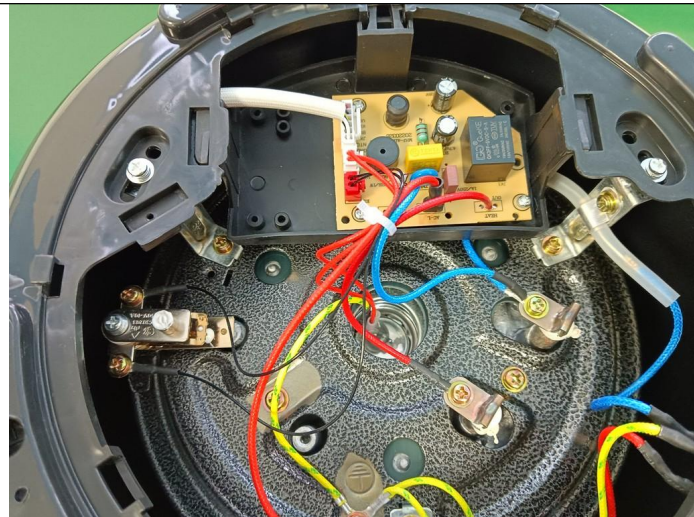
Report No.: MT-20260408-001(SR)



Internal inspection



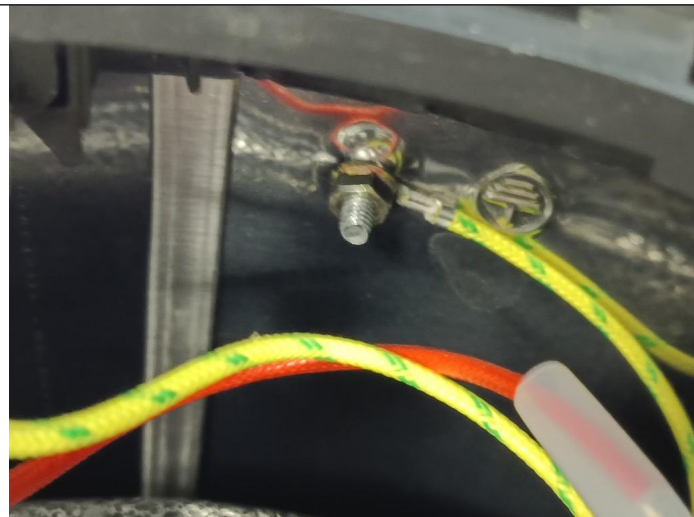
Internal inspection



Internal inspection



Internal inspection



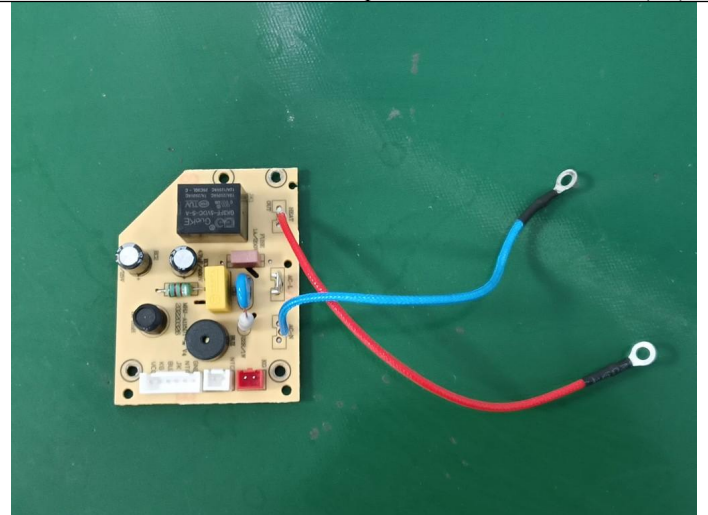
Internal inspection



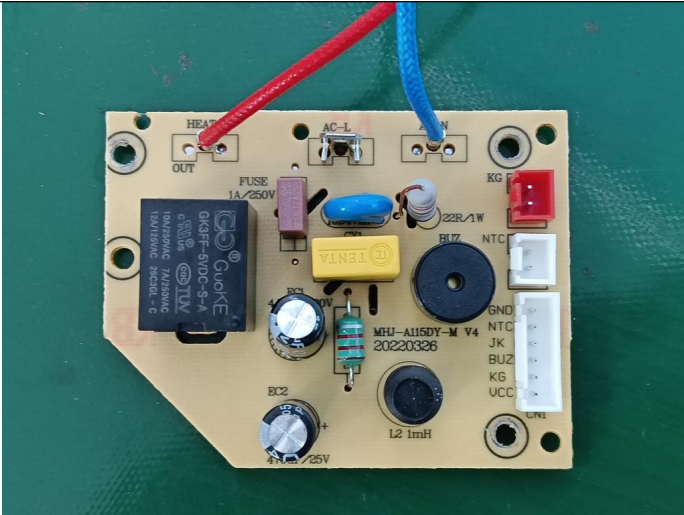
Internal inspection



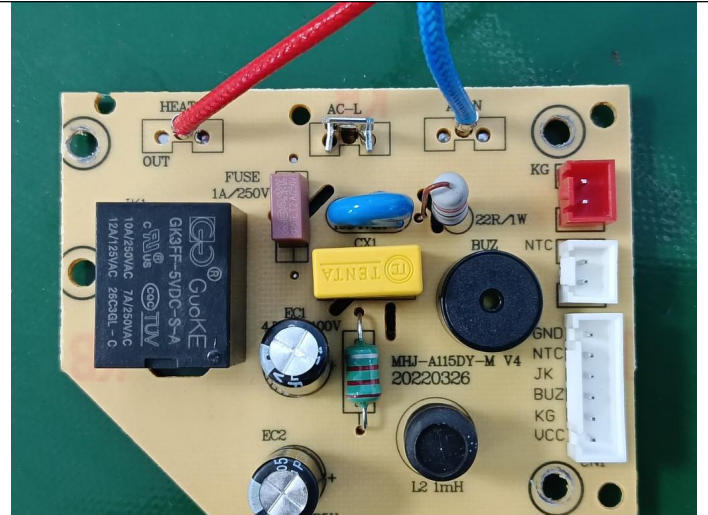
Internal inspection



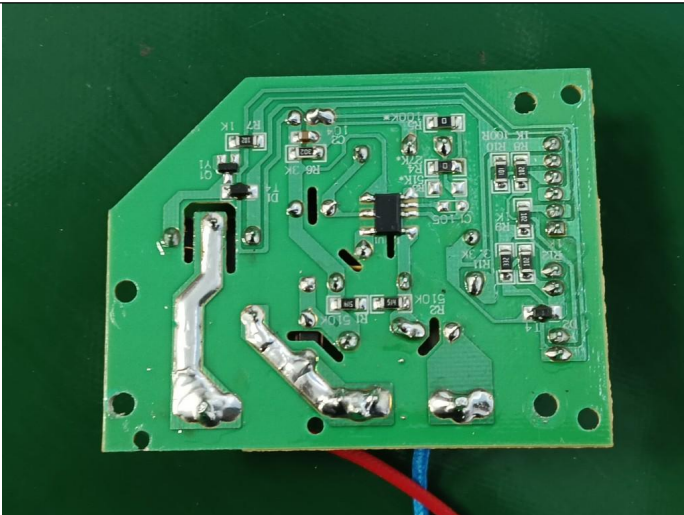
Internal inspection



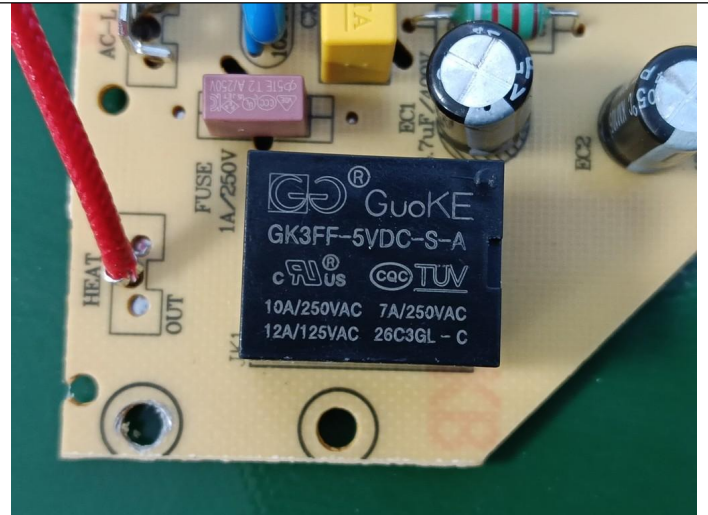
Internal inspection



Internal inspection



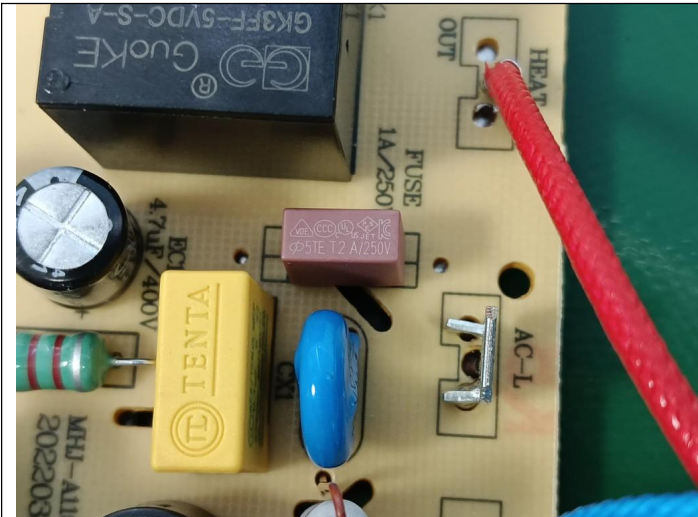
Internal inspection



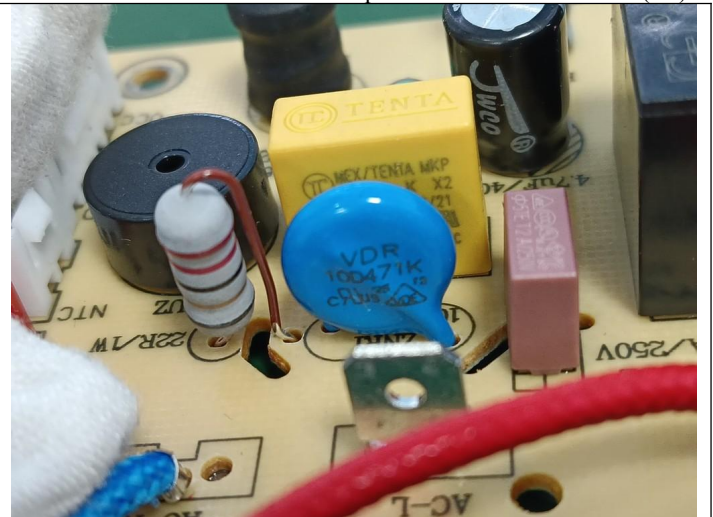
Internal inspection



Final Random Inspection Report



Internal inspection



Internal inspection



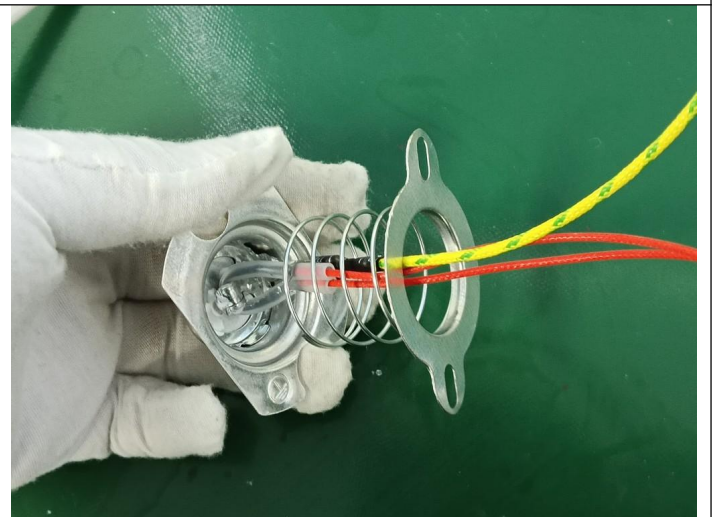
Internal inspection



Internal inspection



Internal inspection



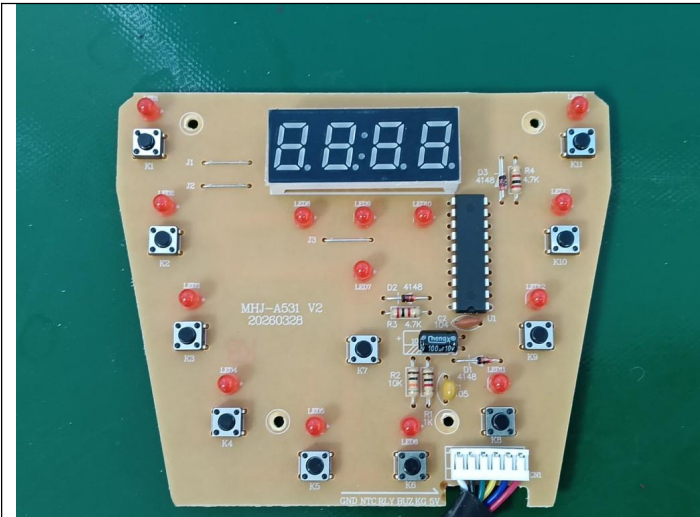
Internal inspection



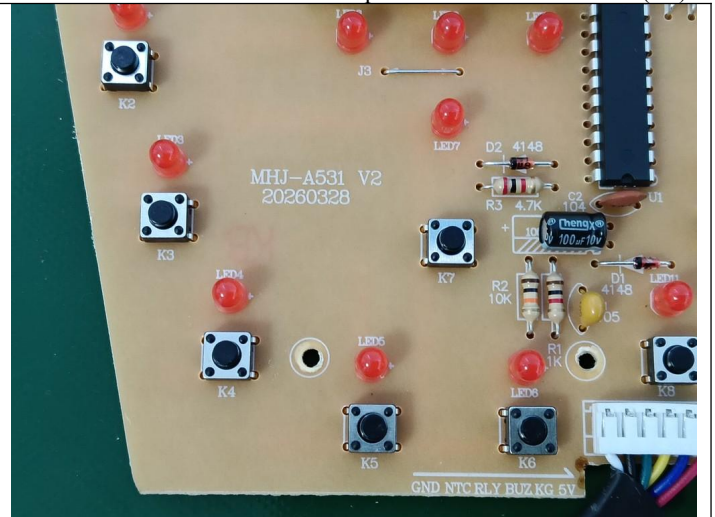
MT-INSPECTION

Final Random Inspection Report

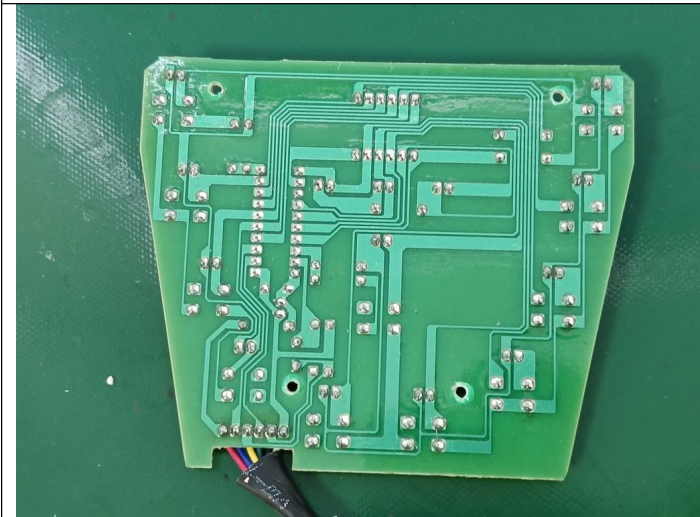
Report No.: MT-20260408-001(SR)



Internal inspection



Internal inspection



Internal inspection



Internal inspection



Internal inspection



Internal inspection



MT-INSPECTION

Final Random Inspection Report

Report No.: MT-20260408-001(SR)



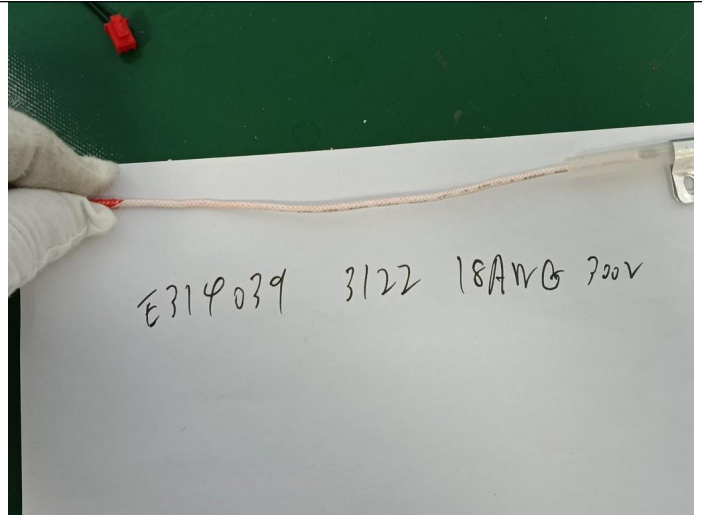
Internal inspection



Internal inspection



Internal inspection



Internal inspection

Page 105 of 119 Report No. GZE5231202267201

Clause	Requirement + Test	Result - Remark	Verdict
Alt	GuangdongYincheng Electric Appliance Co., Ltd., YC-F16 ✓ AC 250V, 16 A	DIN VDE 0620-2-1 (VDE 0620-2-1) VDE 40026066	
Alt.	Jiangmen Gomentech Electrical Co., Ltd., GM-01 AC 250V, 16 A	DIN VDE 0620-2-1 (VDE 0620-2-1) VDE 40023785	
BS plug	Ching Cheng wire Material Co., Ltd., EL-210 AC 250V, 13 A	BS 1363-1 BS IKM 39096	
Alt.	Jiangmen YinCheng Wire Co., Ltd., AC 250V, 13A	BS 1363-1 35-105517	
Alt.	Zhongshan Hong Electrical Appliance Co., Ltd., AC 250V, 13 A	BS 1363-1 ASTA 1400	
Alt.	Guangdong Zhoushishenlong Wire Manufacture Co., Ltd., AC 250V, 13A	BS 1363-1 ASTA 1379	
Alt.	Shen Zhen Hong Shan Chuan In Co., Ltd., HSC-601 AC 250V, 13 A	BS 1363-1 ASTA 1266	

Internal inspection

Clause	Requirement + Test	Result - Remark	Verdict
Connector	Ching Cheng Wire Material Co., Ltd., EL-701 AC 250V, 10 A	EN 60320-1:2015 EN 60320-3:2014 IEC 60320-1:2015 IEC 60320-3:2014	VDE 40014003
Alt.	Zhongshan Hongyun Electrical Appliance Co., Ltd., HY-012 AC 250V, 10 A	EN 60320-1:2015 EN 60320-3:2014 IEC 60320-1:2015 IEC 60320-3:2014	VDE 40045671
Alt	GuangdongYincheng Electric Appliance Co., Ltd., YC-L10 ✓ AC 250 V, 10 A	IEC 60320-1:2015 EN 60320-1:2015	VDE 40027508
Alt	Jiangmen Gomentech Electrical Co., Ltd., GM-04 AC 250V, 10A	EN 60320-1:2015 EN 60320-3:2014 IEC 60320-1:2015 IEC 60320-3:2014	VDE 40029330
Alt.	Guangdong Zhoushishenlong Wire Manufacture Co., Ltd., AC 250 V, 10 A	EN 60320-1:2015 EN 60320-3:2014 IEC 60320-1:2015 IEC 60320-3:2014	VDE 40047326
	HongSha Industry Co., Ltd., SC-406 AC 250 V, 10 A	EN 60320-1:2015 EN 60320-3:2014 IEC 60320-1:2015 IEC 60320-3:2014	VDE 40040167
	guynance HY-012 AC 250 V, 10 A	KC60320-1	SU04203-16003
	AC 250 V, 10 A	KC60320-1	SU04114

Internal inspection

This reflects our findings at the time and place in inspection. This inspection has been carried out to the best of our knowledge and ability and our responsibility is limited to the exercise of reasonable one. This report does not relieve the sellers from their contractual obligations nor prejudice buyer's right for compensation for any apparent and / or hidden defects not detected during our random inspection or occurring thereafter. This report does not evidence shipment.



MT-INSPECTION

Final Random Inspection Report

Report No.: MT-20260408-001(SR)

Page 106 of 119 Report No. GZES231202267201

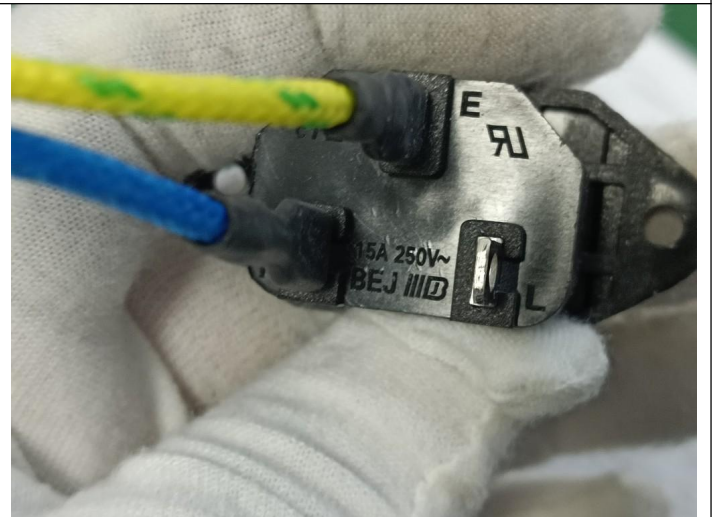
Clause	Requirement + Test	Result - Remark	Verdict
Alt	Guangdong Yincheng Electric Appliance Co., Ltd. YC-18 AC 250 V, 10 A	AS/NZS 3112 SAA-221357-EA	VDE 4004
Alt.	Yunan Aoli Wire & Cable Co., Ltd. AL-036 AC 250 V, 10 A	AS/NZS 3112 SAA-182648-EA	VDE 4004
Power cord	Ching Cheng Wire Material Co., Ltd. H05VV-F 3G 0.75mm ² 3G 1.0mm ² (Length<2m)	EN50525-2-11 IEC 60227-5	VDE 4004
Alt	Guangdong Yincheng Electric Appliance Co., Ltd. H05VV-F 3G 0.75mm ² 3G 1.0mm ² (Length<2m)	EN50525-2-11 IEC 60227-5	VDE 40027
Alt.	Jiangmen Gomentech Electrical Co., Ltd. H05VV-F 3G 0.75mm ² 3G 1.0mm ² (Length<2m)	EN50525-2-11 IEC 60227-5	VDE 40028
Alt.	Zhongsan Electric Appliance Co., Ltd. H05VV-F 3G 0.75mm ² 3G 1.0mm ² (Length<2m)	EN50525-2-11 IEC 60227-5	VDE 40041433
Alt.	Guangdong Zhoushishenlong Wire Manufacture Co., Ltd. H05VV-F 3G 0.75mm ² 3G 1.0mm ² (Length<2m)	EN50525-2-11 IEC 60227-5	VDE 40041729
Alt	Hong Shan Chuan Industry (Shen Zhen) Co., Ltd. H05VV-F 3G 0.75mm ² 3G 1.0mm ² (Length<2m)	EN50525-2-11 IEC 60227-5	VDE 40037206
KC power cord	Zhongsan Hongyun Electrical Appliance Co., Ltd. H05VV-F 3G 0.75mm ² 3G 1.0mm ² (Length<2m)	K60227-1 K60227-2 K60227-5	SU01146-16002
Alt.	Hong Shan Chuan Industry (Shenzhen) Co., LTD H05VV-F 3G 0.75mm ² 3G 1.0mm ² (Length<2m)	K60227-1 K60227-2 K60227-5	SU01101-12001A
Alt.	Guangdong Zhoushishenlong Wire Manufacture Co., Ltd. H05RR-F 3G 0.75mm ² 3G 1.0mm ² (Length<2m)	KC60245-1 KC60245-2 KC60245-4	SU01177-18003

Alt	Zhe Jiang Bei Er Jia Electronic Co., Ltd.	ST-A01-001L ST-A01-002L ST-A01-003J ST-A01-003K	AC 250 V, 10 A	IEC 60320-1:2015 EN 60320-1:2015
Alt	Yueqing Yanhui Electronic Co., Ltd.	DB-14	AC 250 V, 10 A	IEC 60320-1:2015 EN 60320-1:2015
Thermal link (x2)	ShanghaiXinyuan Electronic Co.,Ltd.	RY141	250 V~, 10 A, Tf: 141 °C	EN 60691 IEC 60691:2015
Alt.	Therm-O-Disc Europe B.V.	G4A00	250 V~, 10 A, Tf: 144 °C	EN 60691 IEC 60691:2015
Alt.	A.R. Electric Co., Ltd.	F0x 144C	250 V~, 10 A, Tf: 144 °C	EN 60691 IEC 60691:2015
Alt.	Zhongsan Sheng Ping Thermal Protectors Co., Ltd.	SPF-139	AC 250 V, 10 A, Tf 142	EN 60691 IEC 60691:2015
Heating element	Zhongsan Ronghai Electrical Technology Co., Ltd.	YH	AC 220-240V	IEC/EN 60335-1 IEC/EN 60335-2-15
Pressure regulator	Foshan Gaoming Xi Te Electrical Co., Ltd.	KSD101	AC 250V, 10A, T200, 1E5	EN 60730-1:2011 IEC 60730-1:2010

Internal inspection

Pressure regulator	Foshan Gaoming Xi Te Electrical Co., Ltd.	KSD101	AC 250V, 10A, T200, 1E5	EN 60730-1:2011 IEC 60730-1:2010
Alt.	Zhongsan Huilong Electrical Co., Ltd	YCD3005	AC 250V, 10A, T200, 6E4	EN 60730-1:2011 IEC 60730-1:2010
Alt.	Guangzhou Yuanlong Household Appliances Co., Ltd.	KSD203	AC 250V, 10A, T200, rated pressure: 40kPa	IEC 60730-1: 2013 + A1 IEC 60730-2-6: 2015 EN 60730-1 EN 60730-2-6
Relay for RHD602, RHD603, RHD637, RHD638	Wenzhou Jiajie Electric Co., Ltd.	JQX-14FF3-S-12DM	AC 250, 10A, 12 VDC, T85, 1E6	IEC 61810-1:2015 EN 61810-1

Internal inspection



Internal inspection



Internal inspection

Page 108 of 119 Report No. GZES231202267201

Clause	Requirement + Test	Result - Remark	Verdict
Alt	Zhejiang LECI Electronics Co., Ltd.	DB-14 AC 250 V, 10 A	IEC 60320-1:2015 EN 60320-1:2015 VDE 40032137
Alt	Zhe Jiang Bei Er Jia Electronic Co., Ltd.	ST-A01-001L ST-A01-002L ST-A01-003J ST-A01-003K	AC 250 V, 10 A IEC 60320-1:2015 EN 60320-1:2015 VDE 40013388
Alt	Yueqing Yanhui Electronic Co., Ltd.	DB-14	AC 250 V, 10 A IEC 60320-1:2015 EN 60320-1:2015 VDE 40032008
Thermal link (x2)	ShanghaiXinyuan Electronic Co., Ltd.	RY141	250 V~, 10 A, Tf: 141 °C EN 60691 IEC 60691:2015 TUV R5015680
Alt.	Therm-O-Disc Europe	G4A00	250 V~, 10 A, Tf: 144 °C EN 60691 IEC 60691:2015 VDE 40017228
Alt.	A.R. Electric Co., Ltd.	F0x 144C	250 V~, 10 A, Tf: 144 °C EN 60691 IEC 60691:2015 VDE 40030329
Alt.	Zhongsan Sheng Ping Thermal Protectors Co., Ltd.	SPF-139	AC 250 V, 10 A, Tf 142 EN 60691 IEC 60691:2015 VDE 40004433

Internal inspection

Internal inspection



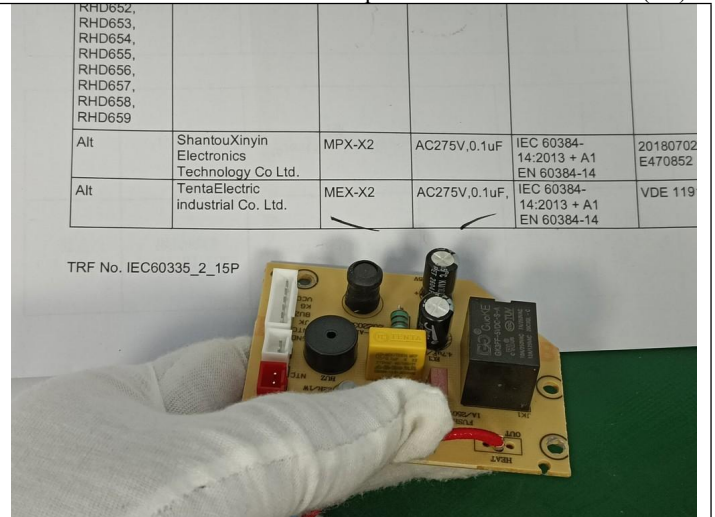
MT-INSPECTION

Final Random Inspection Report

Report No.: MT-20260408-001(SR)



Internal inspection



Internal inspection

IEC 60335-2-15					
Clause	Requirement + Test			Result - Remark	Verdict
Alt	Cerglass MFGinc	10D471K	470V, T125	IEC 61051-1:2007 IEC 61051-2:1991 IEC 61051-2:1991	VDE 40028836
PCB	Kingboard Laminates Holdings Limited	KB-2150G KB-2150GC KB-2151 KB-3150 KB-3151 KB-3151C KB-3152 KB-5150 KB-6150 KB-6160	V-0	IEC/EN 60335-1 IEC/EN 60335-2-15	Tested with appliance VDE 5722
Alt.	FujianLihao Electric Appliance Co., Ltd	L40F(CEM-1)	V-0, 130°C	IEC 60695-11-10	E193288
Alt.	JiangMei Electric Appliance Co., Ltd			IEC 60695-11-10	E123995
Alt.	Shandong Electronic Technology Co., Ltd			IEC/EN 60335-1 C/EN 60335-2-15	Tested with appliance UL E141940
Alt.				IEC/EN 60335-1 IEC/EN 60335-2-15	Tested with appliance UL E123995
			80°C; 300V;20-26 AWG	IEC/EN 60335-1 IEC/EN 60335-2-15	Tested with appliance UL E343829
			80°C; 300V;20-	IEC/EN 60335-1	

Internal inspection

IEC 60335-2-15					
Clause	Requirement + Test			Result - Remark	Verdict
Alt	Cerglass MFGinc	10D471K	470V, T125	IEC 61051-1:2007 IEC 61051-2:1991 IEC 61051-2:1991	VDE 40028836
PCB	Kingboard Laminates Holdings Limited	KB-2150G KB-2150GC KB-2151 KB-3151 KB-3151C KB-3152 KB-5150 KB-6150 KB-6160	V-0	IEC/EN 60335-1 IEC/EN 60335-2-15	Tested with appliance VDE 5722
Alt.	FujianLihao Electric Appliance Co., Ltd	L40F(CEM-1)	V-0, 130°C 0.8-3.2mm	IEC 60695-11-10	E193288
Alt.					1-10 E123995
Alt.					5-1 5-2 Tested with appliance UL E141940
Alt.					35-1 35-2 Tested with appliance UL E123995
Alt.					335-1 335-2 Tested with appliance UL E343829
Internal wire to control PCB					30335-1 30335-2 UL E511719
Alt.	Zho Elec				60335-1 60335-2 Tested with appliance UL E207567
Alt.	GUM				UL E511719

Internal inspection

Item: RHD691



Product View



Product View



MT-INSPECTION

Final Random Inspection Report

Report No.: MT-20260408-001(SR)



Product View



Product View



Product View



Product View



Product View



Product View



MT-INSPECTION

Final Random Inspection Report

Report No.: MT-20260408-001(SR)



Product View



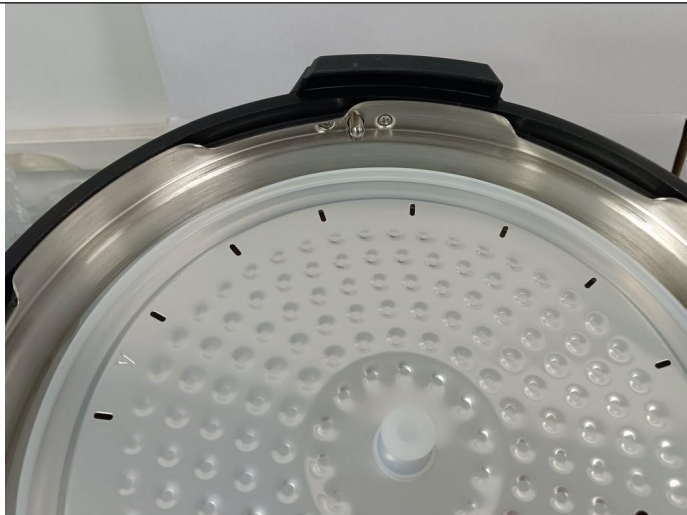
Product View



Product View



Product View



Product View



Product View



MT-INSPECTION

Final Random Inspection Report

Report No.: MT-20260408-001(SR)



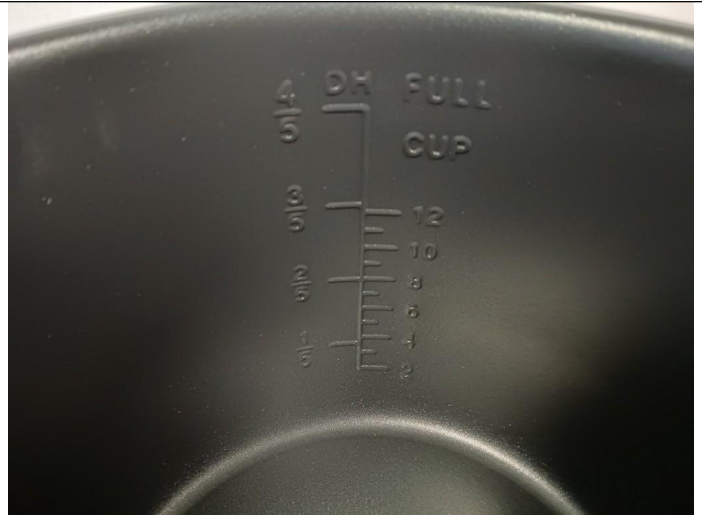
Product View



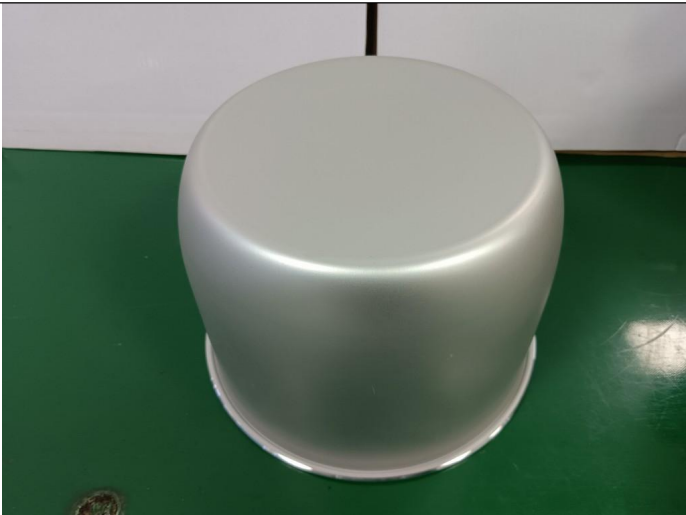
Product View



Product View



Product View



Product View



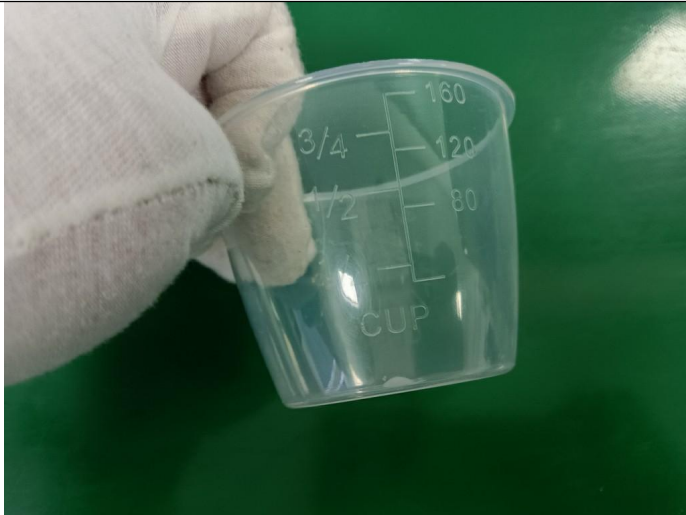
Product View



MT-INSPECTION

Final Random Inspection Report

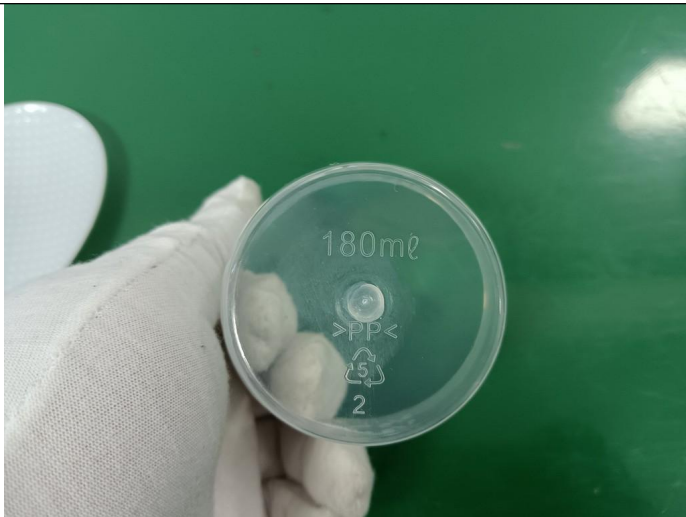
Report No.: MT-20260408-001(SR)



Product View



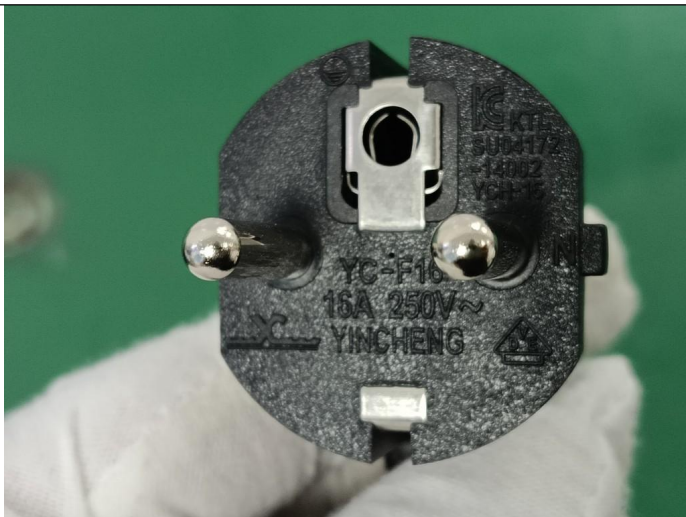
Product View



Product View



Product View



Product View



Product View



MT-INSPECTION

Final Random Inspection Report

Report No.: MT-20260408-001(SR)



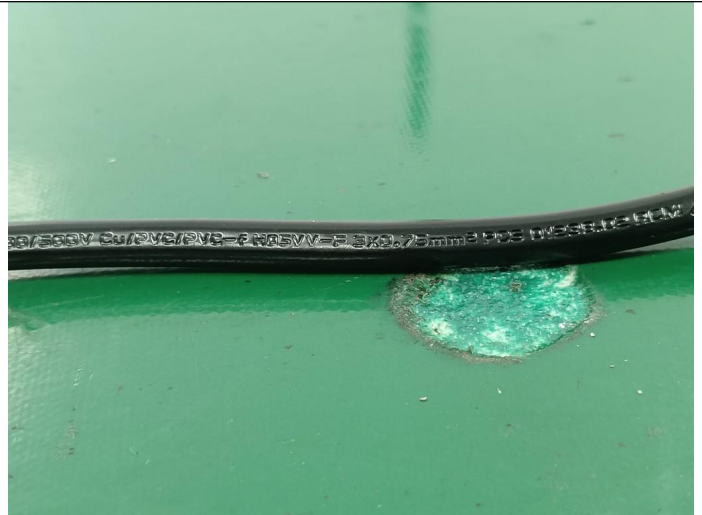
Product View



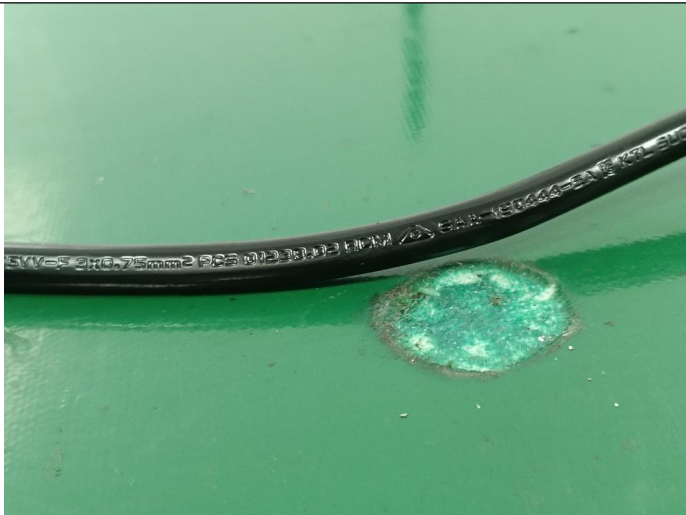
Product View



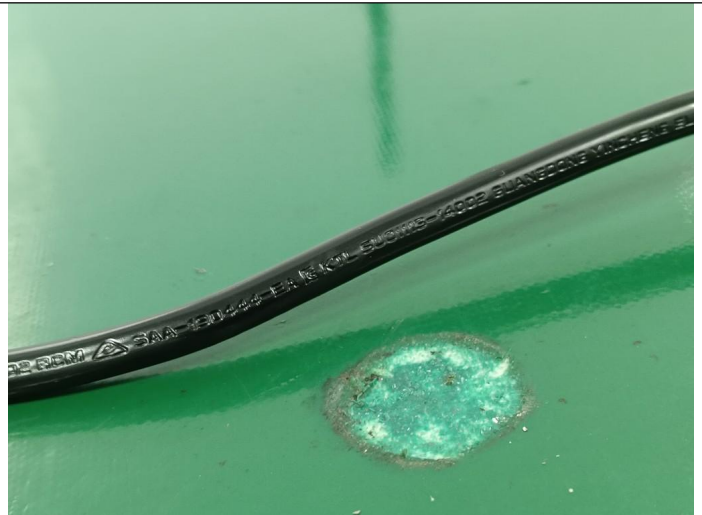
Product View



Product View



Product View



Product View



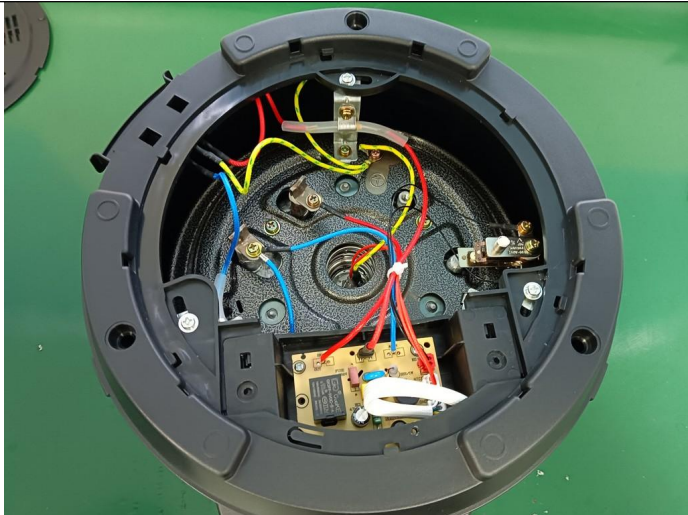
Final Random Inspection Report



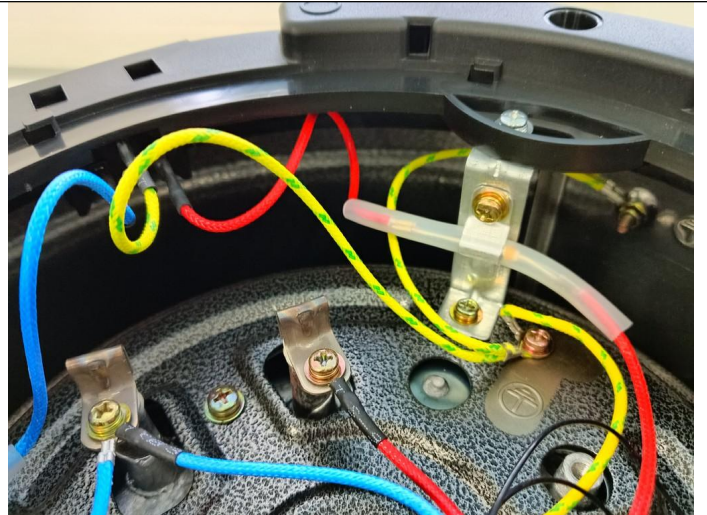
Product View



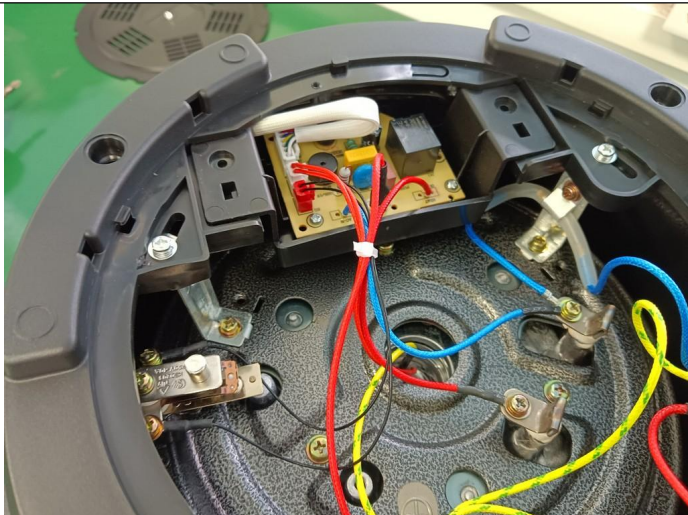
Product View



Internal inspection



Internal inspection



Internal inspection



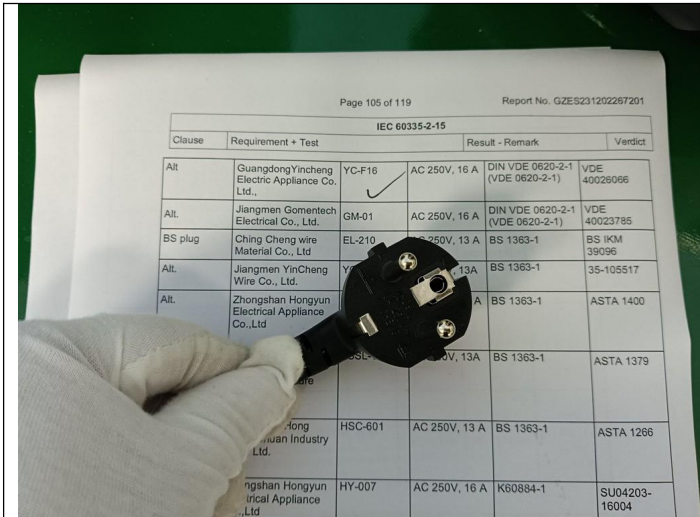
Internal inspection



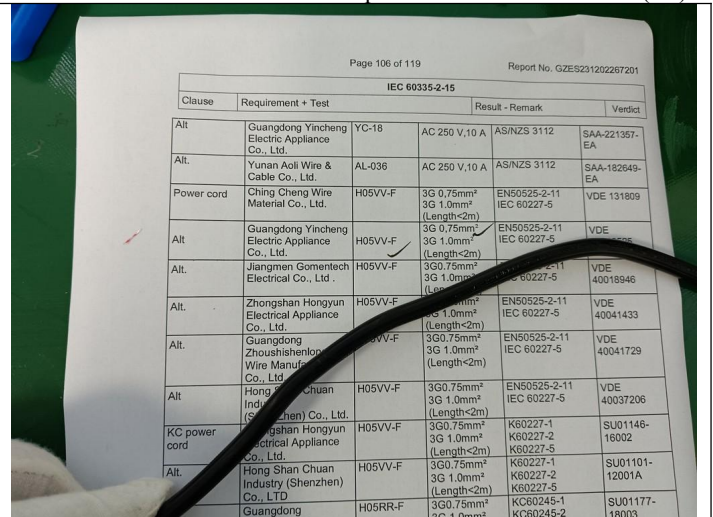
MT-INSPECTION

Final Random Inspection Report

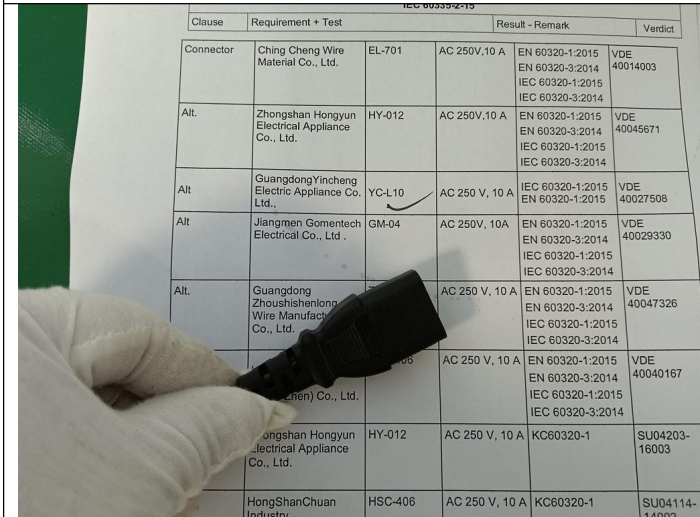
Report No.: MT-20260408-001(SR)



Internal inspection



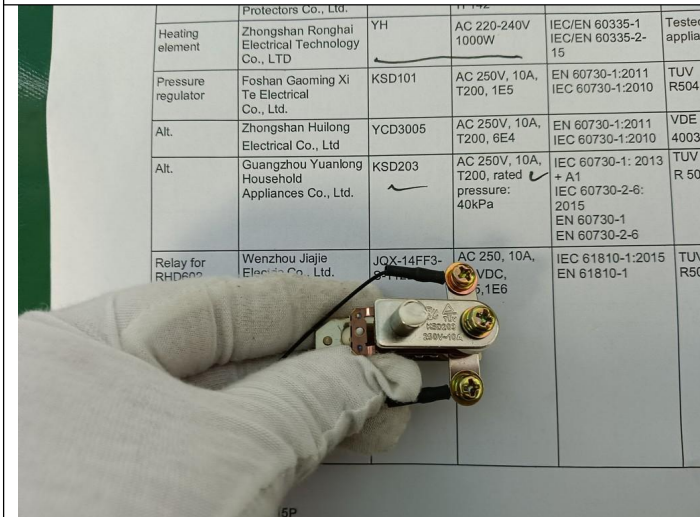
Internal inspection



Internal inspection



Internal inspection



Internal inspection



Internal inspection

This reflects our findings at the time and place in inspection. This inspection has been carried out to the best of our knowledge and ability and our responsibility is limited to the exercise of reasonable one. This report does not relieve the sellers from their contractual obligations nor prejudice buyer's right for compensation for any apparent and / or hidden defects not detected during our random inspection or occurring thereafter. This report does not evidence shipment.



MT-INSPECTION

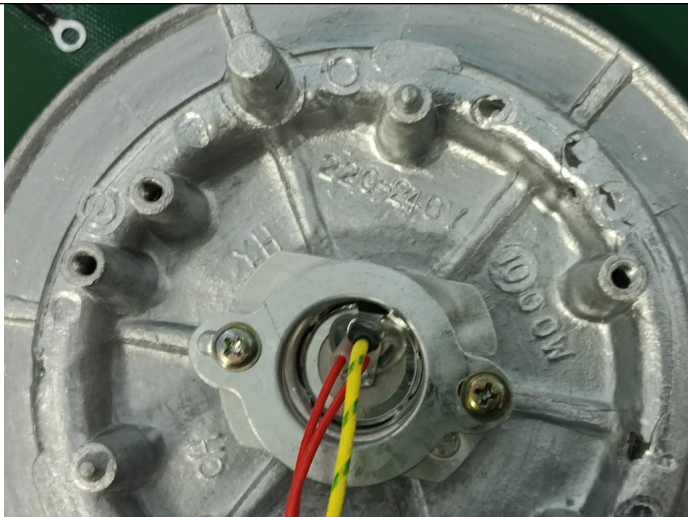
Final Random Inspection Report

Report No.: MT-20260408-001(SR)



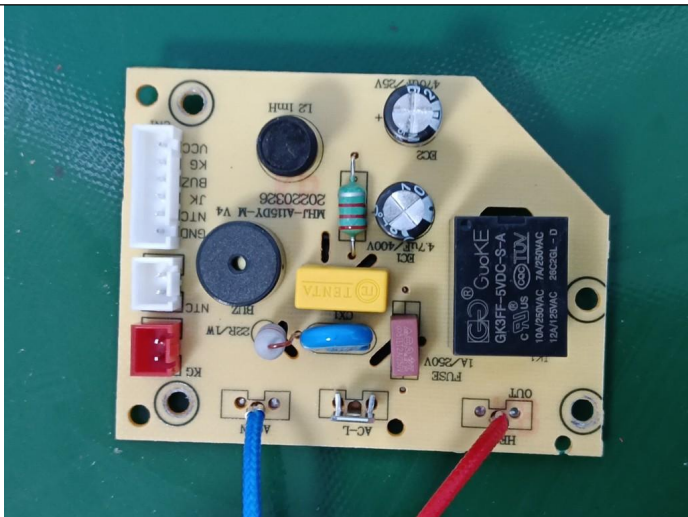
Internal inspection

Alt.	Yueqing Yanhui Electronic Co., Ltd.	DB-14	AC 250 V, 10 A	IEC 60320-1:2015 EN 60320-1:2015	VDE 40032008
Thermal link (x2)	ShanghaiXinyuan Electronic Co.,Ltd.	RY141	250 V~, 10 A, Tf: 141 °C	EN 60691 IEC 60691:2015	TUV R50156808
Alt.	Therm-O-Disc Europe B.V.	G4A00	250 V~, 10 A, Tf: 144 °C	EN 60691 IEC 60691:2015	VDE 40017228
Alt.	A.R. Electric Co., Ltd.	F0x 144C	250 V~, 10 A, Tf: 144 °C	EN 60691 IEC 60691:2015	VDE 40030329
Alt.	Zhongshan Sheng Ping Thermal Protectors Co., Ltd.	SPF-139	AC 250 V, 10 A, Tf 142	EN 60691 IEC 60691:2015	VDE 40004430
	Zhongshan Ronghai Electrical Technology Co., Ltd.	YH	AC 220-240V	IEC/EN 60335-1 IEC/EN 60335-2-15	Tested with appliance
	Foshan Gaoming Xi Te Electrical Co., Ltd.	KSD101	AC 250V, 10A, T200, 1E5	EN 60730-1:2011 IEC 60730-1:2010	TUV R50415225
	Zhongshan Huilong Electrical Co., Ltd	YCD3005	AC 250V, 10A, T200, 6E4	EN 60730-1:2011 IEC 60730-1:2010	VDE 40039915
	Guangzhou Yuanlong Household Appliances Co., Ltd.	KSD203	AC 250V, 10A, T200, rated pressure: 40kPa	IEC 60730-1: 2013 + A1 IEC 60730-2-6: 2015	TUV R 5028644

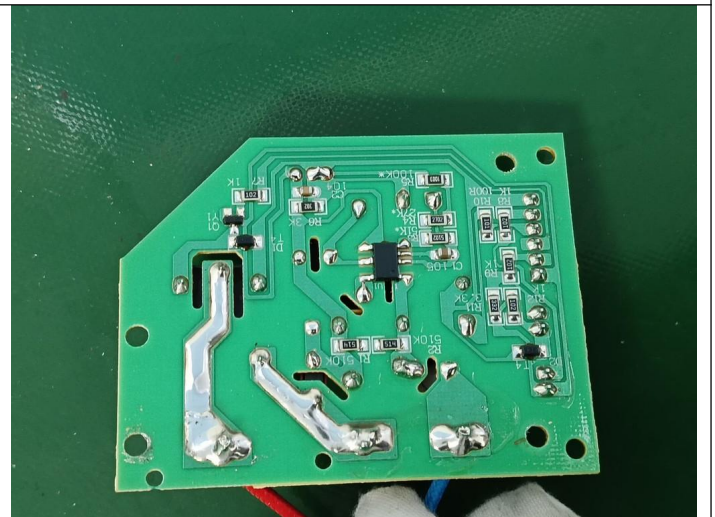


Internal inspection

Alt.	Zhongshan Sheng Ping Thermal Protectors Co., Ltd.	SPF-139	AC 250 V, 10 A, Tf 142	EN 60691 IEC 60691:2015	VDE 40004430
Heating element	Zhongshan Ronghai Electrical Technology Co., LTD	YH	AC 220-240V 1000W	IEC/EN 60335-1 IEC/EN 60335-2-15	Tested with appliance
Pressure regulator	Foshan Gaoming Xi Te Electrical Co., Ltd.	KSD101	AC 250V, 10A, T200, 1E5	EN 60730-1:2011 IEC 60730-1:2010	TUV R50415225
Alt.	Zhongshan Huilong Electrical Co., Ltd	YCD3005	AC 250V, 10A, T200, 6E4	EN 60730-1:2011 IEC 60730-1:2010	VDE 40039915
	Guangzhou Yuanlong Household Appliances Co., Ltd.	KSD203	AC 250V, 10A, T200, rated pressure: 40kPa	IEC 60730-1: 2013 + A1 IEC 60730-2-6: 2015 EN 60730-1 EN 60730-2-6: 2015	TUV R 5028644
				EN 61810-1:2015 EN 61810-1	TUV R502957



Internal inspection



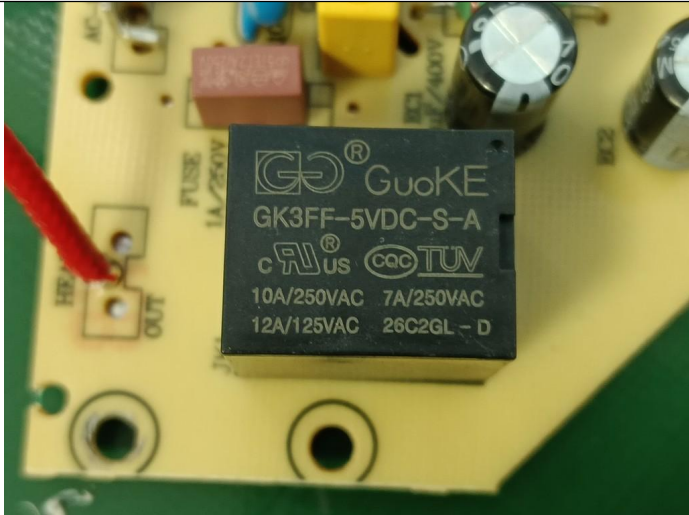
Internal inspection



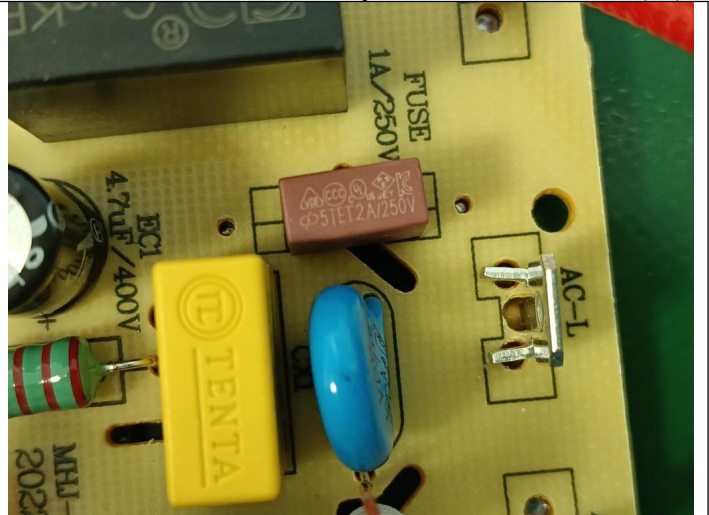
MT-INSPECTION

Final Random Inspection Report

Report No.: MT-20260408-001(SR)



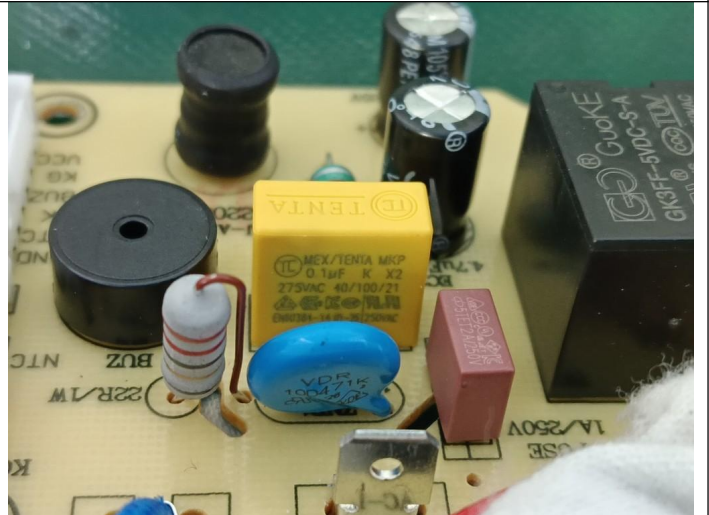
Internal inspection



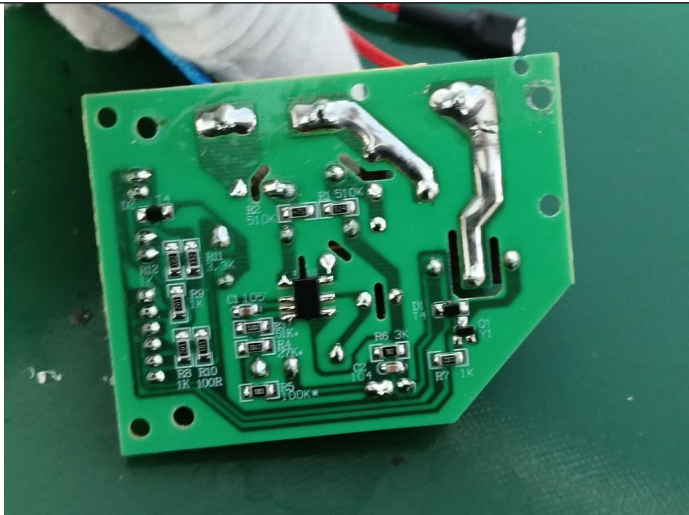
Internal inspection



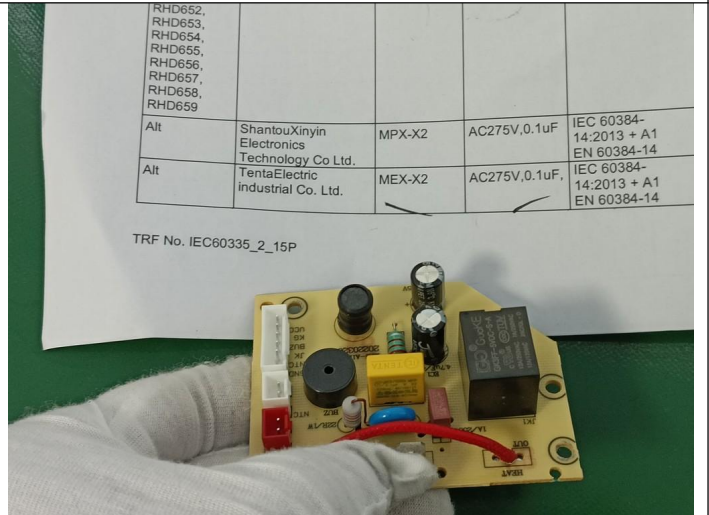
Internal inspection



Internal inspection



Internal inspection



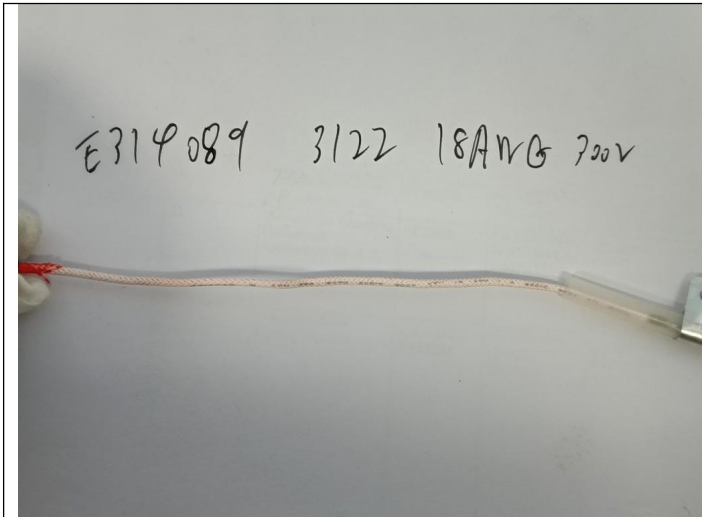
Internal inspection



MT-INSPECTION

Final Random Inspection Report

Report No.: MT-20260408-001(SR)



Internal inspection

Alt.	Kelin Wire Co., Ltd. (Dongguan)	3122	300V, 200°C, 16-18AWG	IEC/EN 60335-1 IEC/EN 60335-2-15	Tested with Appliance UL E250866
Alt.	FOSHAN CITY ZHENG GUAN FLUORPLASTICS WIRE FACTORY	3122	300V, 200°C, 16-18AWG	IEC/EN 60335-1 IEC/EN 60335-2-15	ULE307535
Alt.	ZhongshanHualan Electronic Co., Ltd.	3122	300V, 200°C, 16-18AWG	IEC/EN 60335-1 IEC/EN 60335-2-15	UL E303124
Alt.	ZHONG SHAN CITY BOYU WIRE CO LTD	3122	300V, 200°C, 16-18AWG	IEC/EN 60335-1 IEC/EN 60335-2-15	UL E314089
Silicone tube	Shenzhen Wanchang Industrial Co., Ltd.	SRS-70*	200°C, 600 V	IEC/EN 60335-1 IEC/EN 60335-2-15	Tested with appliance UL E233803
Wire connector on PCB	Shanghai Jifee New Material Technology Co., Ltd.	PA66	Subjected to GWT650	IEC/EN 60335-1 IEC/EN 60335-2-15	Tested with appliance
Main PCB holder	Zhongshan Ronghai Electric Appliance Technology Co., LTD	PA66	Subjected to GWT650	IEC/EN 60335-1 IEC/EN 60335-2-15	Tested with appliance
LED cover	Zhongshan Ronghai Electric Appliance Technology Co., LTD	PA66	Min. thickness: 1,5 mm	IEC/EN 60335-1 IEC/EN 60335-2-15	Tested with appliance
Control panel	Zhongshan Ronghai Electric Appliance Technology Co., LTD	PP	Min. thickness: 1,0 mm	IEC/EN 60335-1 IEC/EN 60335-2-15	Tested with appliance
Bottom enclosure /	Zhongshan Ronghai Electric Appliance	PP	Min. thickness: 1,5 mm	IEC/EN 60335-1 IEC/EN 60335-2-15	Tested with appliance

Internal inspection



Internal inspection

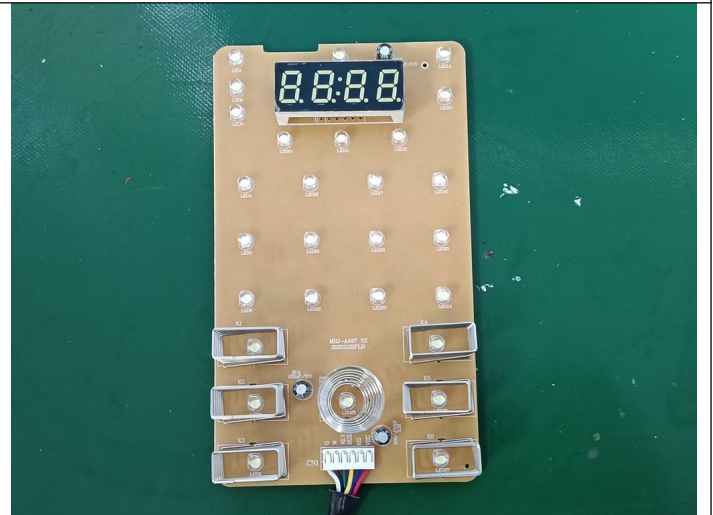
Page 108 of 119 Report No. GZES231202

IEC 60335-2-15					
Clause	Requirement + Test	Result - Remark			
Alt	Zhejiang LECI Electronics Co., Ltd.	DB-14	AC 250 V, 10 A	IEC 60320-1:2015 EN 60320-1:2015	VDE 400321
Alt	Zhe Jiang Bei Er Jia Electronic Co., Ltd.	ST-A01-001L ST-A01-002L ST-A01-003J ST-A01-003K	AC 250 V, 10 A	IEC 60320-1:2015 EN 60320-1:2015	VDE 400133
Alt	Yueqing Yanhui Electronic Co., Ltd.	DB-14	AC 250 V, 10 A	IEC 60320-1:2015 EN 60320-1:2015	VDE 400320
Thermal link (x2)	Shanghai Xinyuan Electronic Co., Ltd.			EN 60691 IEC 60691:2015	TUV R5015
Alt.	Therm-O-Disc			EN 60691 IEC 60691:2015	VDE 40017
				EN 60691 IEC 60691:2015	VDE 40030
				EN 60691 IEC 60691:2015	VDE 4000

Internal inspection

Alt	Cerglass MFG Inc	10D471K	470V, T125	IEC 61051-1:2007 IEC 61051-2:1991 IEC 61051-2-2:1991
PCB	Kingboard Laminates Holdings Limited	KB-2150G KB-2150GC KB-2151 KB-3150 KB-3151 KB-3151C KB-3152 KB-6150 KB-6150 KB-6160	V-0	IEC/EN 60335-1 IEC/EN 60335-2-15
Alt.			V-0, 130°C 0.8-3.2mm	IEC 60695-11-10
Alt.			130°C	IEC 60695-11-10
Alt.				IEC/EN 60335-1 IEC/EN 60335-2-15
Alt.				IEC/EN 60335-1 IEC/EN 60335-2-15

Internal inspection



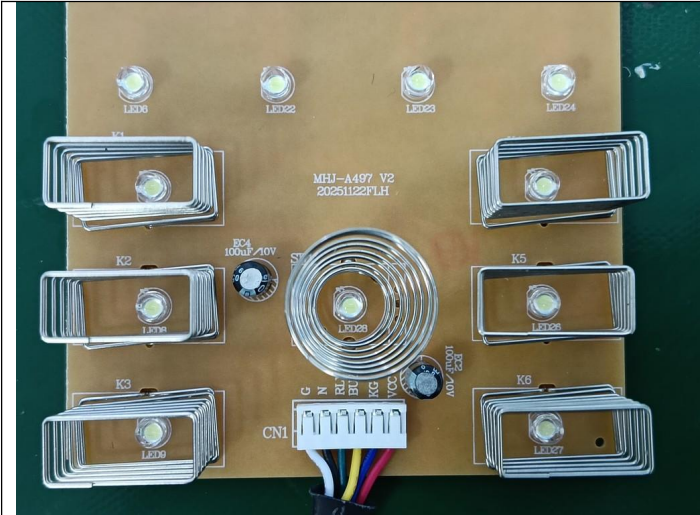
Internal inspection



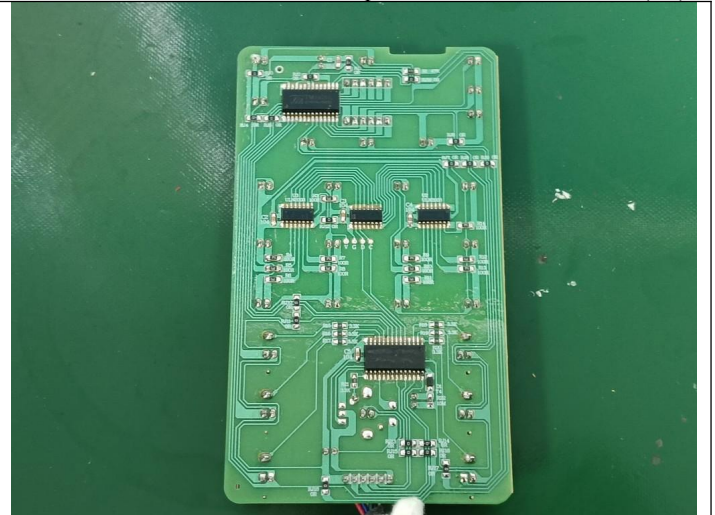
MT-INSPECTION

Final Random Inspection Report

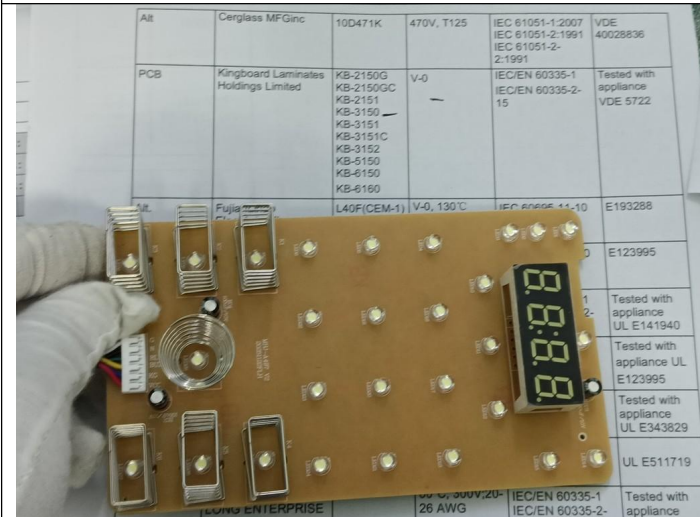
Report No.: MT-20260408-001(SR)



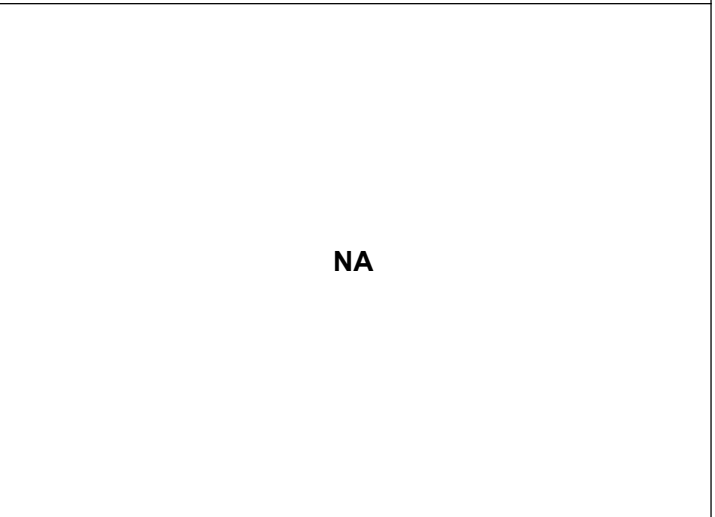
Internal inspection



Internal inspection



Internal inspection



NA

NA

Measurement and Test

Item: RHD602





MT-INSPECTION

Final Random Inspection Report

Report No.: MT-20260408-001(SR)

<p align="center">Product weight</p> 	<p align="center">Product weight</p> 
<p align="center">Product size</p> 	<p align="center">Product size</p> 
<p align="center">Product size</p> 	<p align="center">Product size</p> 
<p align="center">Product size</p>	<p align="center">Product size</p>



MT-INSPECTION

Final Random Inspection Report

Report No.: MT-20260408-001(SR)



Product size



Product size



Product size



Product size



Product size

NA

NA

NA

Item: RHD638



MT-INSPECTION

Final Random Inspection Report

Report No.: MT-20260408-001(SR)



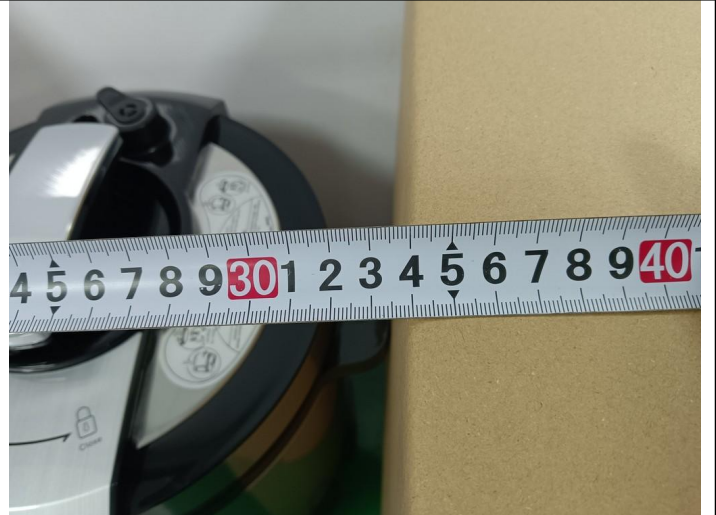
Product weight



Product weight



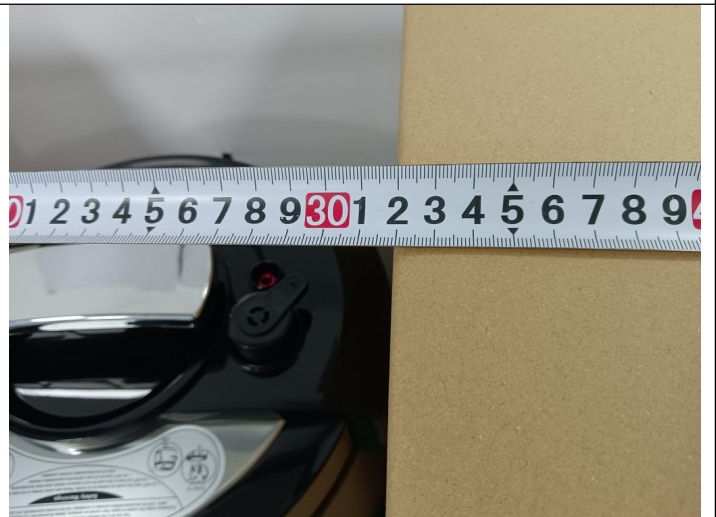
Product size



Product size



Product size



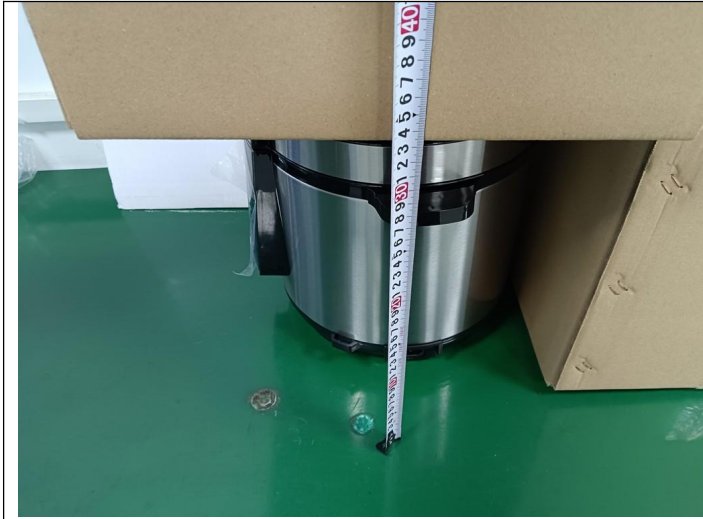
Product size



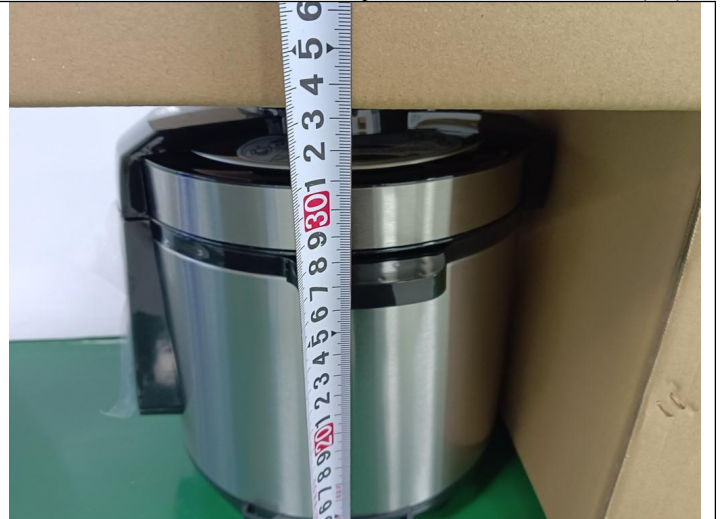
MT-INSPECTION

Final Random Inspection Report

Report No.: MT-20260408-001(SR)



Product size



Product size

NA



Product weight

NA

Item: RHD691



Product weight



Product weight



MT-INSPECTION

Final Random Inspection Report

Report No.: MT-20260408-001(SR)



Product size



Product size



Product size



Product size



Product size



Product size



MT-INSPECTION

Final Random Inspection Report

Report No.: MT-20260408-001(SR)



Product weight



Product size



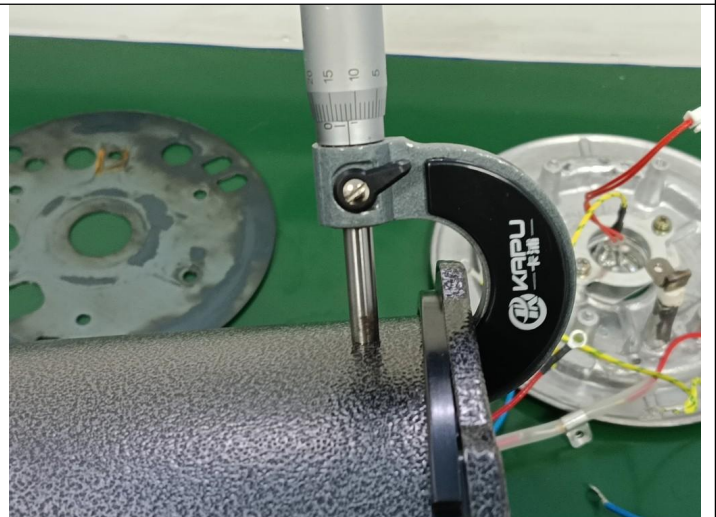
Product size



Product size



Product size



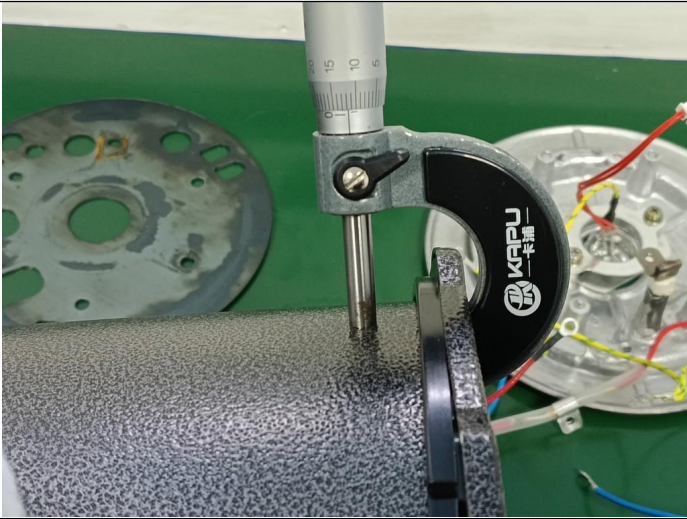
Product size



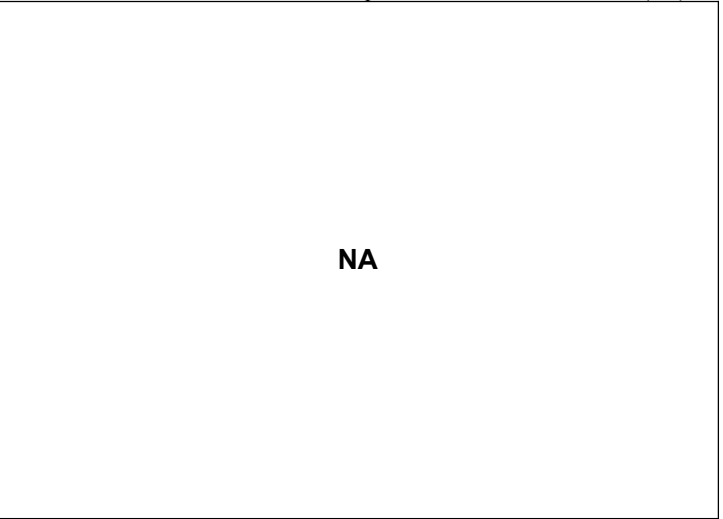
MT-INSPECTION

Final Random Inspection Report

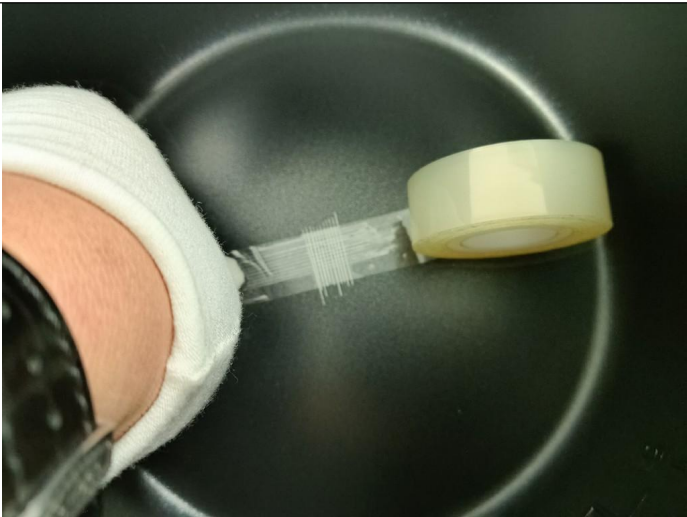
Report No.: MT-20260408-001(SR)



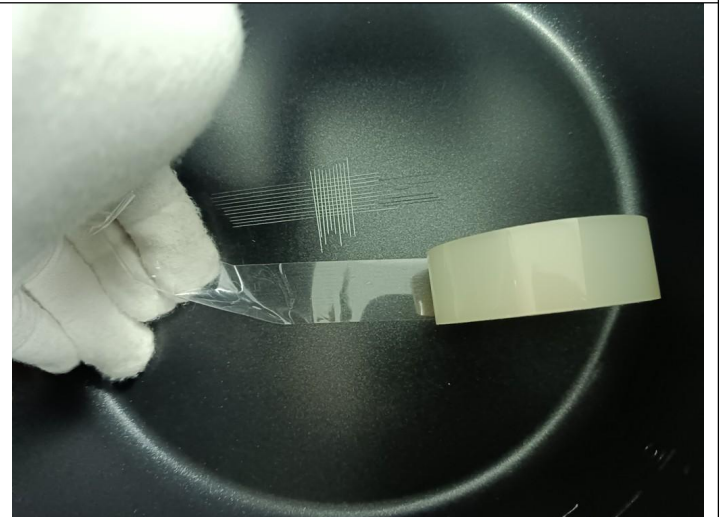
Product size



NA



3M tape check



3M tape check



Abnormal test



Abnormal test



MT-INSPECTION

Final Random Inspection Report

Report No.: MT-20260408-001(SR)



Abnormal test



Abnormal test



Capacity test



Capacity test



Function test



Function test



Final Random Inspection Report



Function test



Function test



Function test



Function test



Function test



Function test



Final Random Inspection Report



Function test



Function test



Function test



Function test



Function test



Function test



MT-INSPECTION

Final Random Inspection Report

Report No.: MT-20260408-001(SR)



Function test



Function test



Function test



Function test



Function test



Function test



Final Random Inspection Report



Function test



Function test



Function test



Function test



Function test



Function test



Final Random Inspection Report



Function test



Function test



Function test



Function test



Function test



Function test



Final Random Inspection Report



Function test



Function test



Function test



Function test



Function test



Function test



Final Random Inspection Report



Function test



Function test



Function test



Function test



Function test



Function test



Final Random Inspection Report



Function test



Function test



Function test



Function test



Function test



Function test



Final Random Inspection Report



Function test



Function test



Function test



Function test



Function test



Function test



Final Random Inspection Report



Function test



Function test



Function test



Function test



Function test



Function test



MT-INSPECTION

Final Random Inspection Report

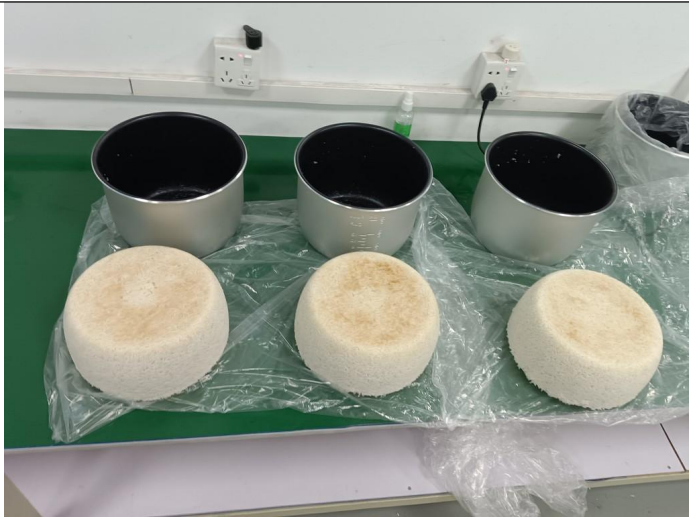
Report No.: MT-20260408-001(SR)



Function test



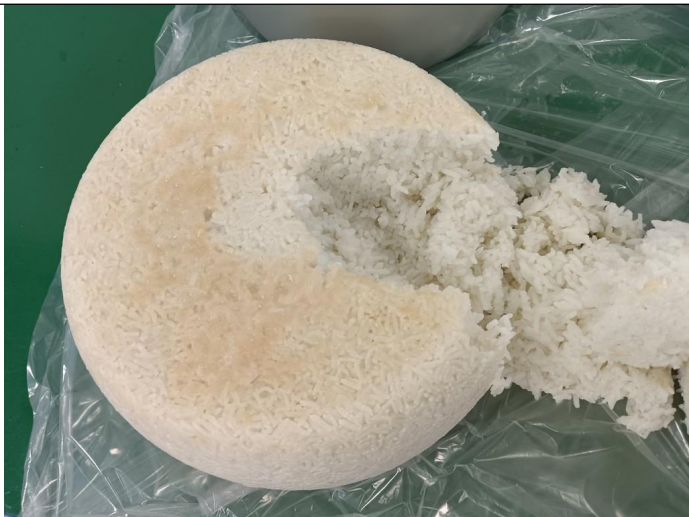
Function test



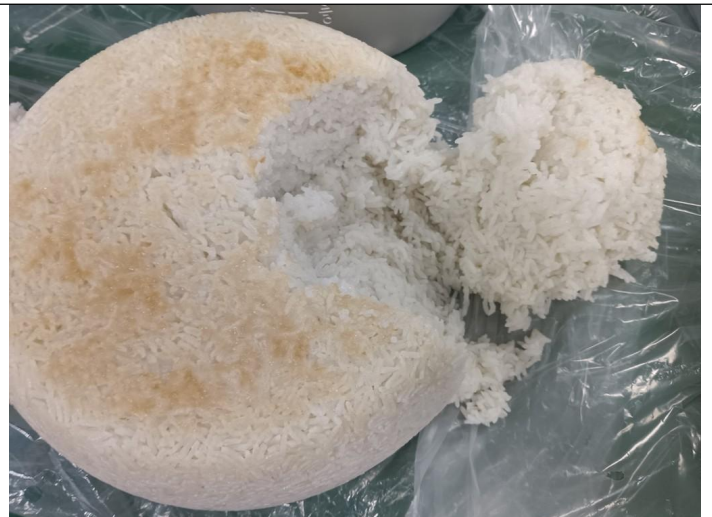
Function test



Function test



Function test



Function test



MT-INSPECTION

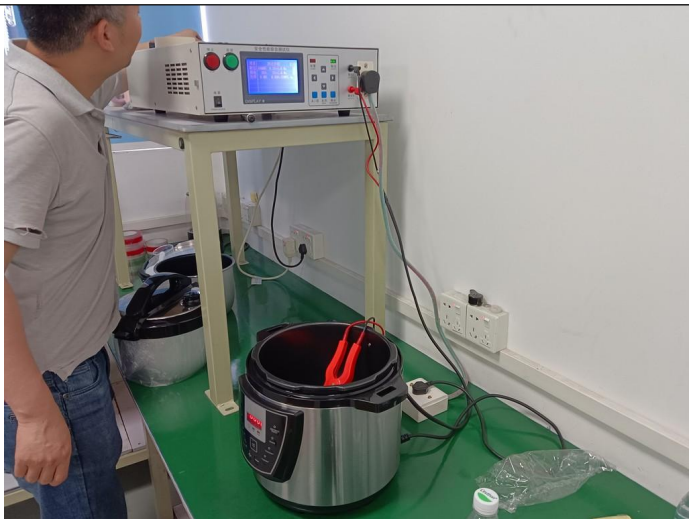
Final Random Inspection Report

Report No.: MT-20260408-001(SR)



Function test

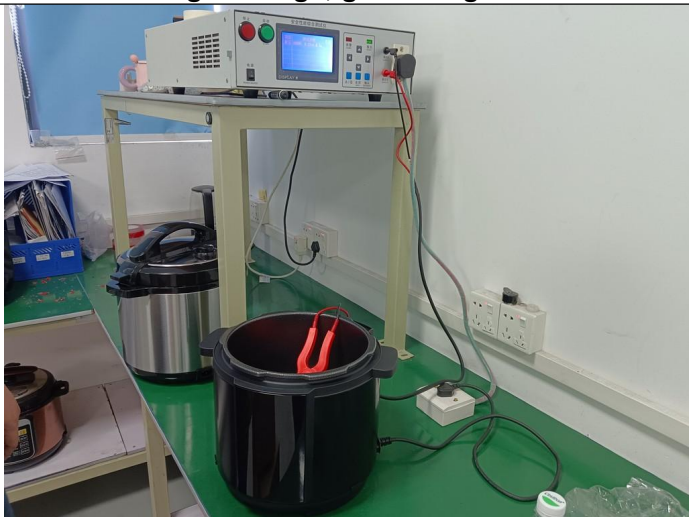
NA



High voltage, grounding test



High voltage, grounding test



High voltage, grounding test



High voltage, grounding test



MT-INSPECTION

Final Random Inspection Report

Report No.: MT-20260408-001(SR)



High voltage, grounding test



High voltage, grounding test



Odor check



Odor check



Power consumption test



Power consumption test



MT-INSPECTION

Final Random Inspection Report

Report No.: MT-20260408-001(SR)



Power consumption test



Power consumption test



Power consumption test



Power consumption test



Power consumption test



Power consumption test



MT-INSPECTION

Final Random Inspection Report

Report No.: MT-20260408-001(SR)



Power consumption test



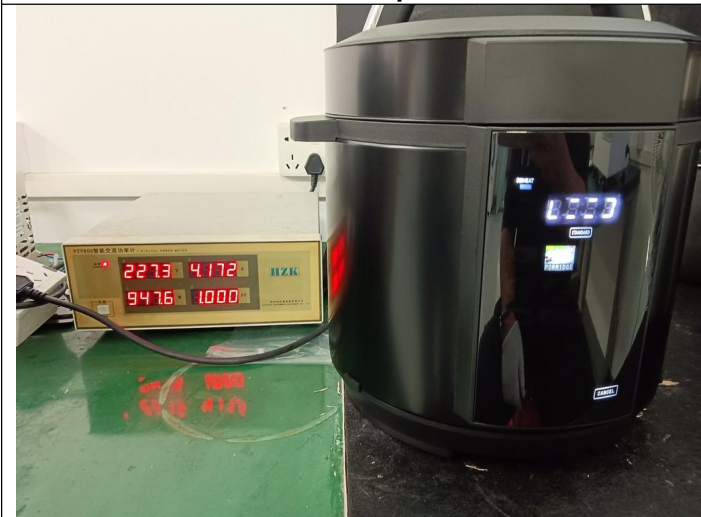
Power consumption test



Power consumption test



Power consumption test



Power consumption test



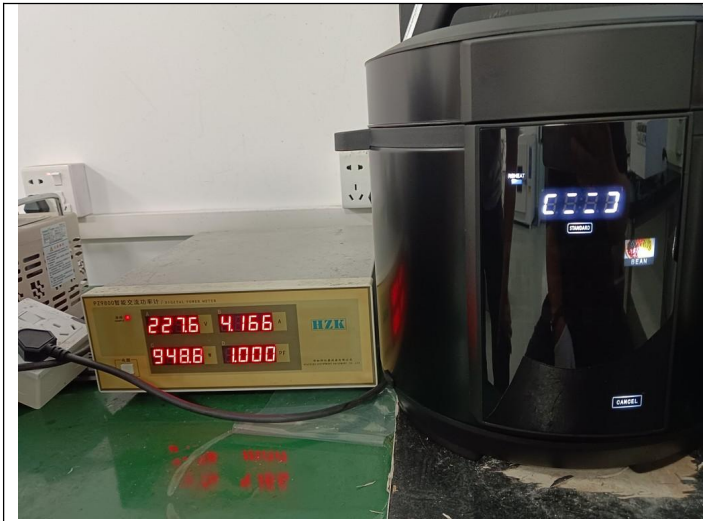
Power consumption test



MT-INSPECTION

Final Random Inspection Report

Report No.: MT-20260408-001(SR)



Power consumption test



Power consumption test



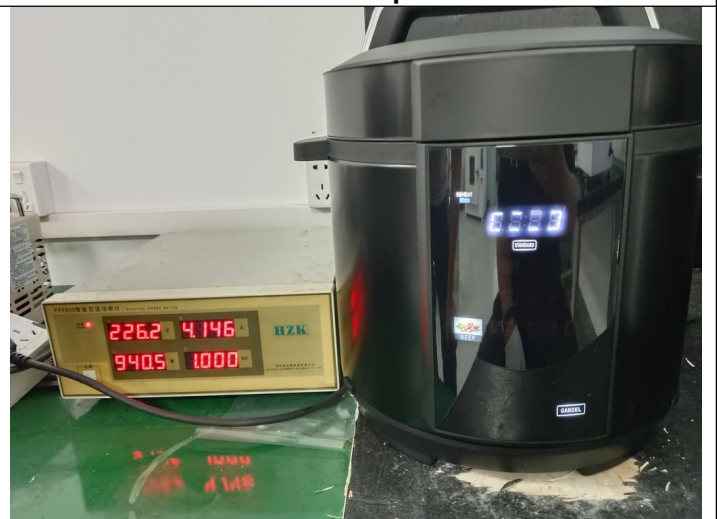
Power consumption test



Power consumption test



Power consumption test



Power consumption test



MT-INSPECTION

Final Random Inspection Report

Report No.: MT-20260408-001(SR)



Power consumption test



Power consumption test



Power consumption test



Power consumption test



Power consumption test



Power consumption test



MT-INSPECTION

Final Random Inspection Report

Report No.: MT-20260408-001(SR)



Power consumption test



Power consumption test



Power consumption test



Power consumption test



Power consumption test



Power consumption test



MT-INSPECTION

Final Random Inspection Report

Report No.: MT-20260408-001(SR)



Power consumption test



Power consumption test



Power consumption test



Power consumption test



Power consumption test



Power consumption test



MT-INSPECTION

Final Random Inspection Report

Report No.: MT-20260408-001(SR)



Pressure test



Pressure test



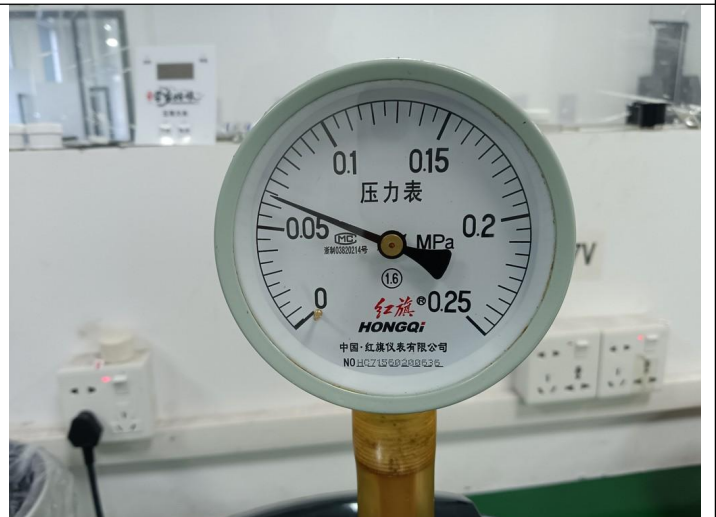
Pressure test



Pressure test



Pressure test



Pressure test



MT-INSPECTION

Final Random Inspection Report

Report No.: MT-20260408-001(SR)



Rubbing test



Rubbing test



Running test



Running test



Stability test



Stability test



MT-INSPECTION

Final Random Inspection Report

Report No.: MT-20260408-001(SR)



Stability test

NA

NA

Other photos



Factory gate



Carton storage

--The End Of Report--