



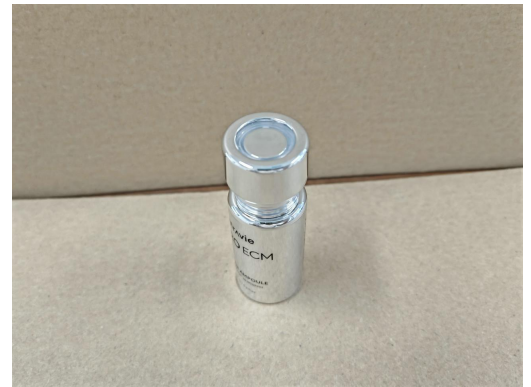
MT-INSPECTION

# Final Random Inspection Report

Report No.: MT-20260416-001

## GENERAL SUMMARY:

Client:	-
PO No.:	-
Item No.:	M101203/M101204
Product Name:	ECM Active Ampoule
Quantity:	60200pcs/75ctns
Inspection location:	Yuyao City, Zhejiang Province
Supplier:	Yuyao Hejia Plastic Industry Co., Ltd.
Date of inspection:	Apr 16 <sup>th</sup> ,2026



## OVERALL CONCLUSION:

Inspection criteria	Passed	Failed	Pending	Comments
Quantity available:	x			Remark 1,2,3
Product Conformity:			x	Remark 4
Workmanship:	x			Remark 5
Test and measurement:			x	Remark 6,7
Labeling:			x	Remark 8
Packing and shipping mark:			x	Remark 9
<b>Result:</b>	<input type="checkbox"/> <b>Acceptable</b>		<input type="checkbox"/> <b>Reject</b>	<input checked="" type="checkbox"/> <b>Pending</b>

## SPECIAL REMARK:

- 1.Upon the arrival, all products were finished and all packed into cartons.
- 2.For item M101203, last carton 532pcs.
- 3.For item M101204, last carton 868pcs.
- 4.There's no approved sample providing for reference during inspection.
- 5.Selected 1000pcs/13cartons samples for inspection, found 15pcs minor defect, for the defects found during inspection, the inspector had already shown to the factory and requested to replace these defects.
- 6.ON-site tests all passed
- 7.No product size and weight information was available for reference.
- 8.No shipping mark spec. available for comparison on site.
- 9.No packing method spec. available for comparison on site.

## AVAILABLE QUANTITY:

Order No.	Item No.	Order Qty		Packed		Not finished		Not packed		Inspect Qty	
		pcs	ctn	pcs	ctn	pcs	ctn	pcs	ctn	pcs	ctn
/	M101203	30100	45	30100	45	0	0	0	0	500	7
	M101204	30100	30	30100	30	0	0	0	0	500	6
<b>Total:</b>		<b>60200</b>	<b>75</b>	<b>60200</b>	<b>75</b>	<b>0</b>	<b>0</b>	<b>0</b>	<b>0</b>	<b>1000</b>	<b>13</b>



# Final Random Inspection Report

Lot Size	General Inspection Levels			Special Inspection Levels			
	I	II	III	S1	S2	S3	S4
2 to 8	A	A	B	A	A	A	A
9 to 15	A	B	C	A	A	A	A
16 to 25	B	C	D	A	A	B	B
26 to 50	C	D	E	A	B	B	C
51 to 90	C	E	F	B	B	C	C
91 to 150	D	F	G	B	B	C	D
151 to 280	E	G	H	B	C	D	E
281 to 500	F	H	J	B	C	D	E
501 to 1,200	G	J	K	C	C	E	F
1,201 to 3,200	H	K	L	C	D	E	G
3,201 to 10,000	J	L	M	C	D	F	G
10,001 to 35,000	K	M	N	C	D	F	H
35,001 to 150,000	L	N	P	D	E	G	J
150,001 to 500,000	M	P	Q	D	E	G	J
500,001 and over	N	Q	R	D	E	H	K

## Single sampling plans for normal inspection

Sample Size Code Letter	Sample Size	Acceptable Quality Levels (Normal Inspection)																					
		0.065		0.10		0.15		0.25		0.40		0.65		1.0		1.5		2.5		4.0		6.5	
		Ac	Re	Ac	Re	Ac	Re	Ac	Re	Ac	Re	Ac	Re	Ac	Re	Ac	Re	Ac	Re	Ac	Re	Ac	Re
A	2																			0	1		
B	3																			0	1	0	1
C	5																			0	1	0	1
D	8																			0	1	0	1
E	13																			0	1	0	1
F	20																			0	1	0	1
G	32																			0	1	0	1
H	50																			0	1	0	1
J	80																			0	1	0	1
K	125																			0	1	0	1
L	200	0	1																	0	1	0	1
M	315	0	1																	0	1	0	1
N	500	1	2																	1	2	1	2
P	800	1	2	2	3															2	3	2	3
Q	1250	2	3	2	3	3	4													3	4	3	4
R	2000	3	4	3	4	4	5													4	5	4	5



MT-INSPECTION

# Final Random Inspection Report

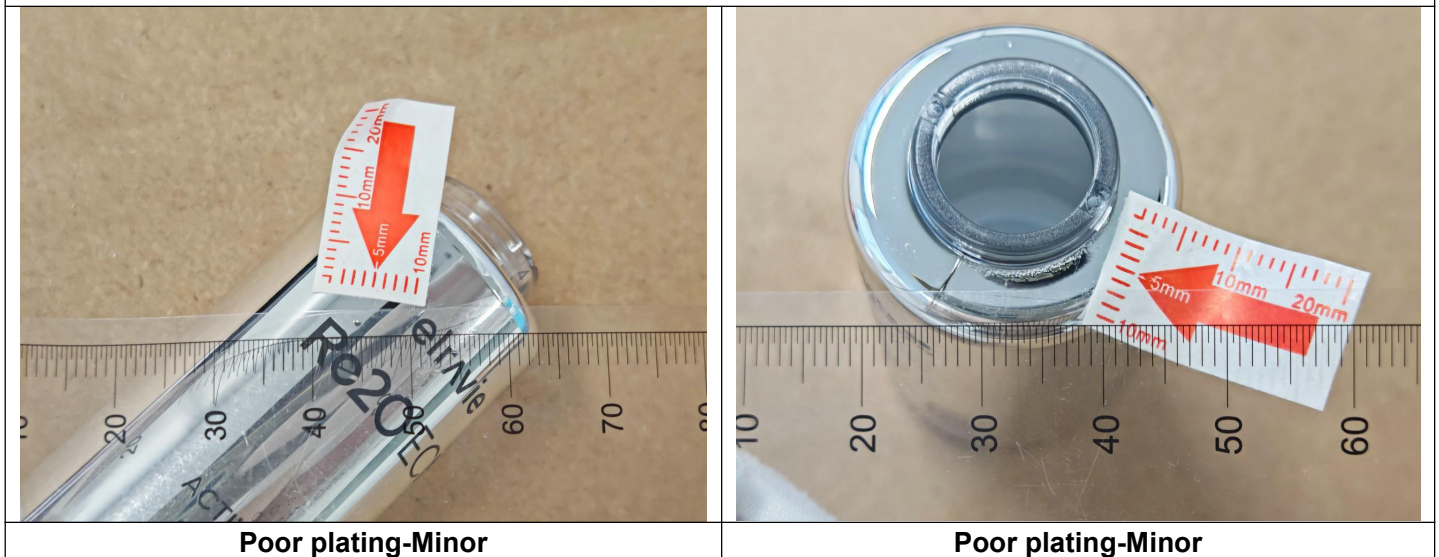
Report No.: MT-20260416-001

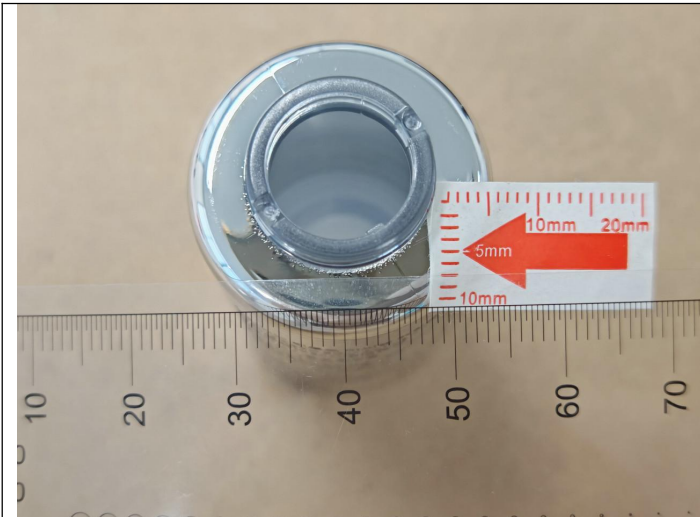
<b>Inspection standard:</b> <i>ANSI/ASQC Z1.4-2003</i> Sampling plan: <i>Single, Normal</i> Inspection level: II AQL: Critical: Not Allowed.	<b>M101203</b>	<b>Sample Size:500pcs</b>		
		<b>Critical</b>	<b>Major</b>	<b>Minor</b>
	<b>AQL:</b>	<b>0</b>	<b>2.5</b>	<b>4.0</b>
	<b>Defects Found:</b>	<b>0</b>	<b>0</b>	<b>12</b>
	<b>Max. Allowed:</b>	<b>0</b>	<b>21</b>	<b>21</b>

WORKMANSHIP:						
Item No.	Sample size	Defective rate	Defects Description	Cri	Maj	Min
M101203	500pcs	0.6%	Poor plating	0	0	3
		0.6%	Scratch mark on unit	0	0	3
		0.4%	Poor printing	0	0	2
		0.4%	Dirty mark on unit	0	0	2
		0.2%	Dent mark on unit	0	0	1
		0.2%	Black dot on unit	0	0	1
<b>Total defect:</b>				<b>0</b>	<b>0</b>	<b>12</b>
<b>Allowed:</b>				<b>0</b>	<b>21</b>	<b>21</b>
<b>Result:</b>				<b>Pass</b>		

## Defect Pictures:

Item No:M101203





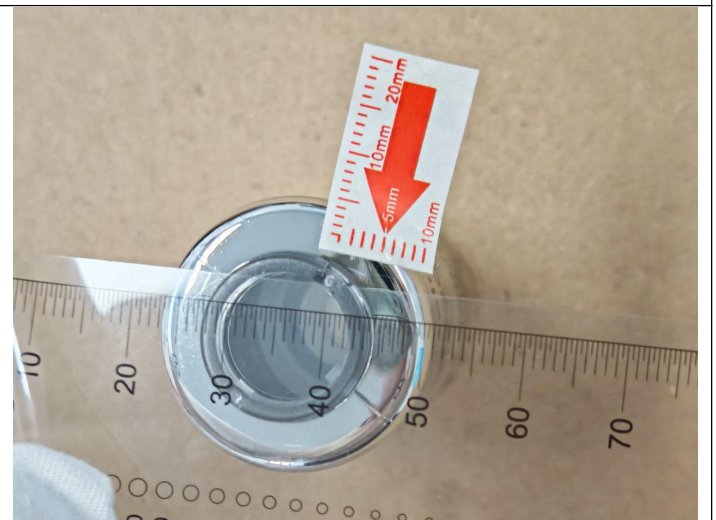
**Poor plating-Minor**



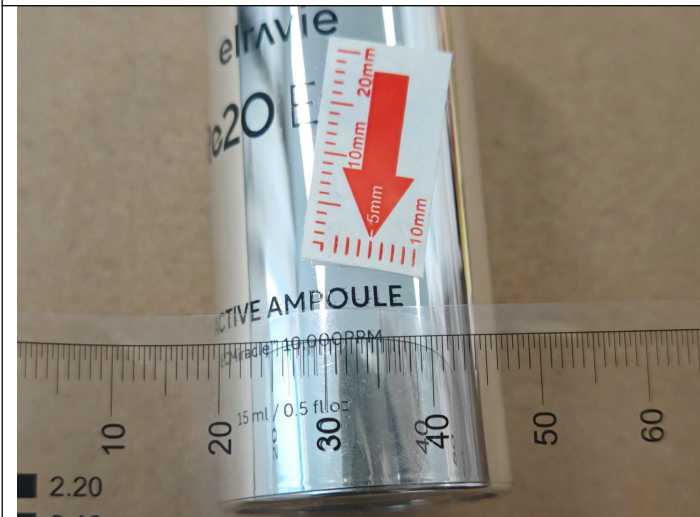
**Scratch mark on unit-Minor**



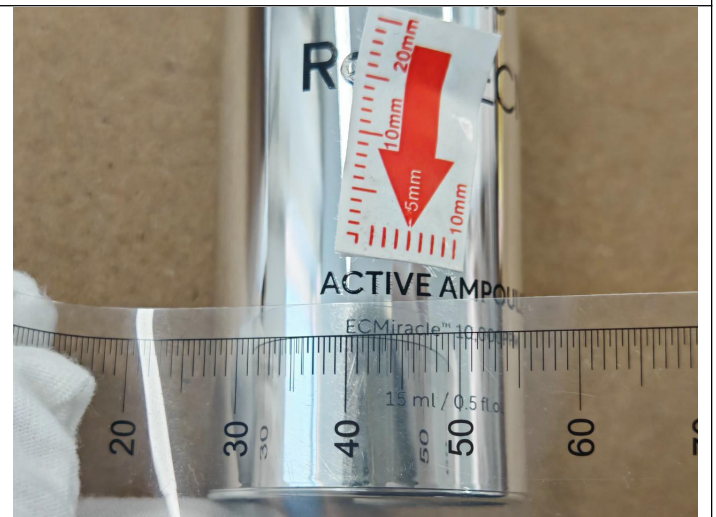
**Scratch mark on unit-Minor**



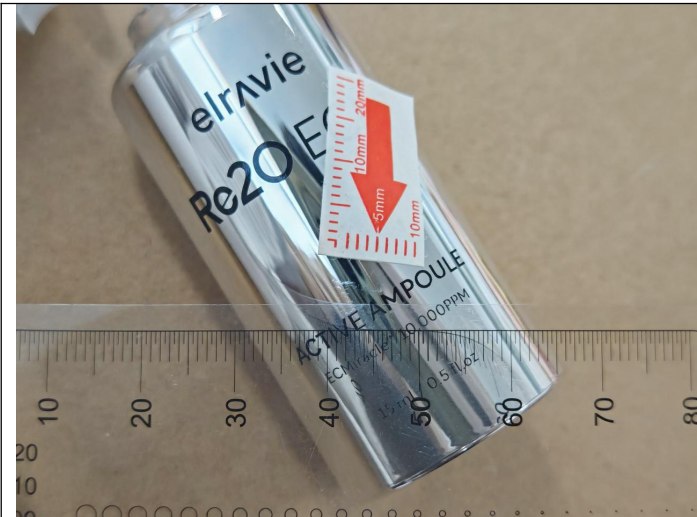
**Scratch mark on unit-Minor**



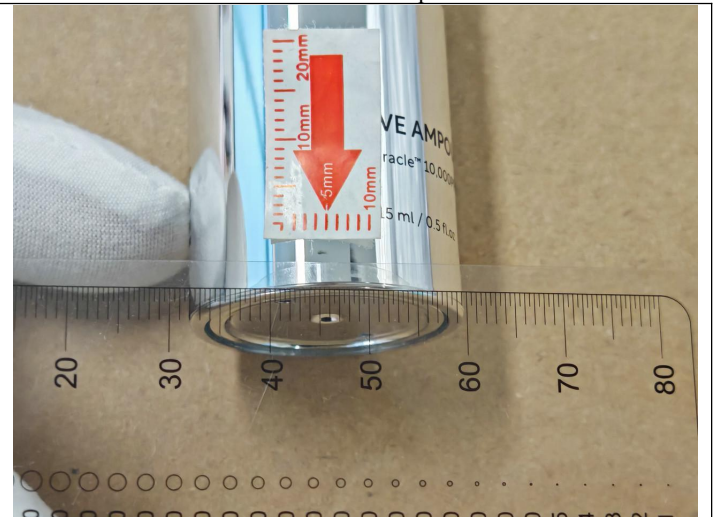
**Poor printing-Minor**



**Poor printing-Minor**



**Dirty mark on unit-Minor**



**Dirty mark on unit-Minor**



**Dent mark on unit-Minor**



**Black dot on unit-Minor**

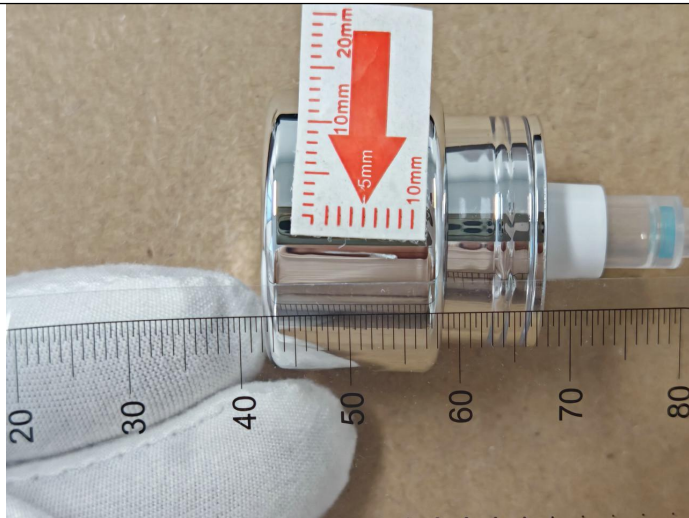
<p><b>Inspection standard:</b> <a href="#">ANSI/ASQC Z1.4-2003</a>          Sampling plan: <i>Single, Normal</i>          Inspection level: II          AQL: Critical: Not Allowed.</p>	<b>M101204</b>	<b>Sample Size:500pcs</b>		
		<b>Critical</b>	<b>Major</b>	<b>Minor</b>
	<b>AQL:</b>	<b>0</b>	<b>2.5</b>	<b>4.0</b>
	<b>Defects Found:</b>	<b>0</b>	<b>0</b>	<b>3</b>
	<b>Max. Allowed:</b>	<b>0</b>	<b>21</b>	<b>21</b>

<b>WORKMANSHIP:</b>						
Item No.	Sample size	Defective rate	Defects Description	Cri	Maj	Min
M101204	500pcs	0.4%	Scratch mark on unit	0	0	2
		0.2%	Poor plating	0	0	1
<b>Total defect:</b>				<b>0</b>	<b>0</b>	<b>3</b>
<b>Allowed:</b>				<b>0</b>	<b>21</b>	<b>21</b>
<b>Result:</b>				<b>Pass</b>		

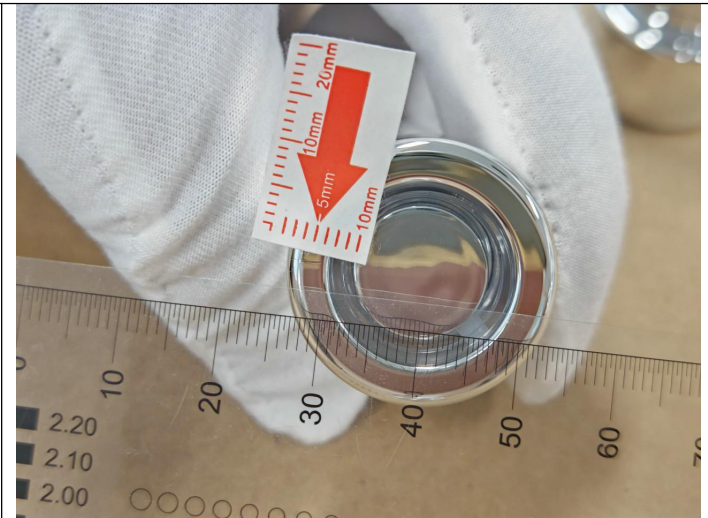


**Defect Pictures:**

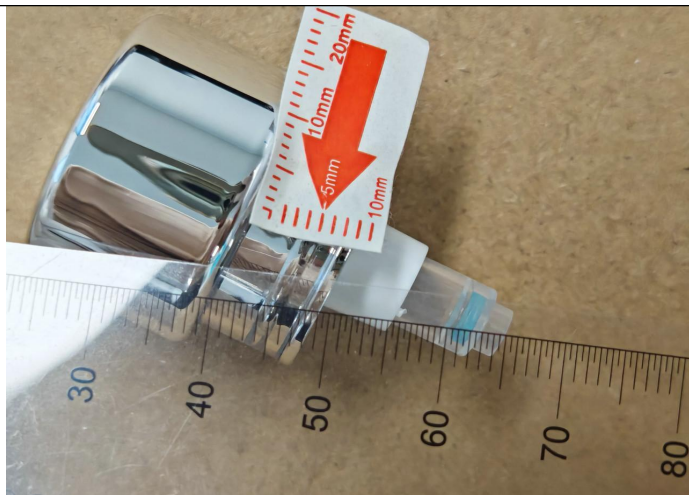
Item No: M101204



Scratch mark on unit-Minor



Scratch mark on unit-Minor



Poor plating-Minor

N/A

**PRODUCT CONFORMITY & ON-SITE TESTS**

Check Points & On-site Tests	Sample Size	Criteria	Result & Remarks
Visual Check (Style, Appearance, Material, Color)	All Sample size	a. Conformance to Style / Appearance / Material / Color compared against: <input type="checkbox"/> Client's / <input type="checkbox"/> Factory's ref. sample. <input checked="" type="checkbox"/> No ref. sample for comparison. (N.B.: Provide details in comment section if 2 or more color shades and/or any color variation is found.) b. Free of nick, burrs, pits, sharp point or any other defects which may affect the product serviceability. c. Finish/ coating is smooth and even without streaks, blisters, wrinkles, or runs. d. Good overall appearance with good alignment of components.	PENDING Remarks:4
Rubbing Test on Painting logo	S-2	Wet rubbing by water for 15 seconds and then	PASS



MT-INSPECTION

# Final Random Inspection Report

Report No.: MT-20260416-001

		dried as per client's specification.	
Silk Screen Printing Adhesive Test	S-2	Stuck the 3M tape on the printing area and stayed for 30 seconds then torn off to see printing quality.	PASS
Pull test on Snaps	All Sample size	By hand force for 10 seconds	PASS
Color shade check	S-2	No color discrepancy	PASS
Assembly check	S-2	Assembly/ installation according to the instruction manual or guide on package to see the component is complete, assembly steps is suitable & the finished product is good performance	PASS
Function check	S-2	All captioned function is well conducted as intended. Such as installation/adjusting, actual using function etc. All of function should be complied with claims.	PASS
Adhesive force test	2pcs	Adhesive force testing of inner pot painting: scratch 100 grids with size 1mm*1mm then test with tape 3M	PASS
Smell test	All Sample size	No pungent smell come out	PASS
Capacity check	2pcs	Actual finding:15.15ml-15.41ml	PASS
Using function check	2pcs	According Instruction Manual	PASS
Leak test	S-2	No leakage	PASS
Vacuum test	2pcs	No leakage	PASS

## PACKING AND ACCESSORIES:

Item No.:	Master shipper ( pcs/ctn )	Carton size-Spec. L×W×H (cm)	Carton size-Actual L×W×H (cm)	G.W (Kg)	N.W (Kg)
M101203	672	52.5x32.5x33.5	52.6x33.1x33.7	15.232	14.04
M101204	1008	52.5x32.5x33.5	51.9x33.1x33.6	11.812	10.74

## PRODUCT SPECIFICATION:

Item No.:	Check point	Sample 1#	Sample 2#	Sample 3 #
M101203	Size check	28.71x28.65x61.51mm	28.68x28.67x61.49mm	28.7x28.63x61.53mm
	Weight check	20.89g	20.81g	20.98g
M101204	Size check	26.99x27.01x41.54mm	26.97x27.03x41.58mm	26.96x26.95x41.51mm
	Weight check	10.65g	10.62g	10.71g
M101203+M101204 4	Size check	28.64x28.77x83.15mm	28.69x28.72x83.09mm	28.71x28.68x83.21mm
	Weight check	31.7g	31.1g	32g

## EXPORT CARTON INFORMATION:

Carton:	New export carton	Yes	Sealing:	Opaque gummed tape	-
Fastening:	Metal staples	No		Transparent gummed tape	Yes
Strapping:	Nylonx2	No		Paper tape	-
Material:	Ply of corrugated paper	5ply	Others:	-	



MT-INSPECTION

# Final Random Inspection Report

Report No.: MT-20260416-001

## Product photo show:

Item: M101203



Carton view



Carton view

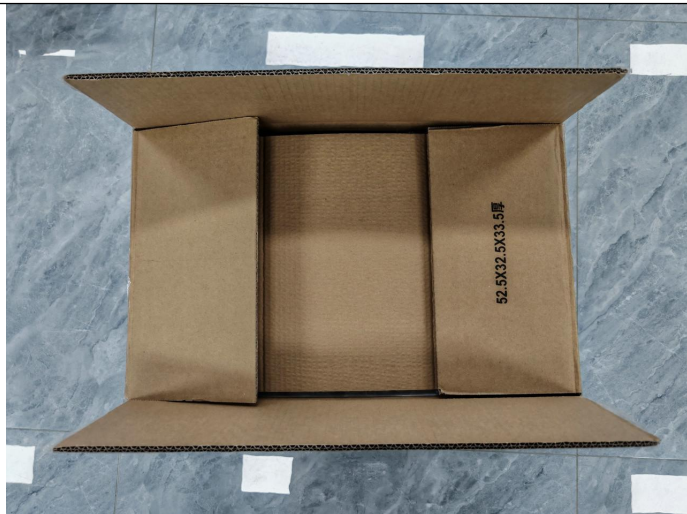


납품처	에이텍
제품명	엘라비에 리투오 이씨엠 액티브앰플
구분	용기
품목코드	M101203
수량	672 EA
납품일자	26. 04. 18
비알글로벌	

Side mark

납품처	에이텍
제품명	엘라비에 리투오 이씨엠 액티브앰플 15ml*3개입 세트
구분	용기
품목코드	M101203
수량	672 EA
납품일자	26. 04. 18
비알글로벌	

Label information



52.5X32.5X33.5厚



52.5X32.5X33.5厚



MT-INSPECTION

# Final Random Inspection Report

Report No.: MT-20260416-001

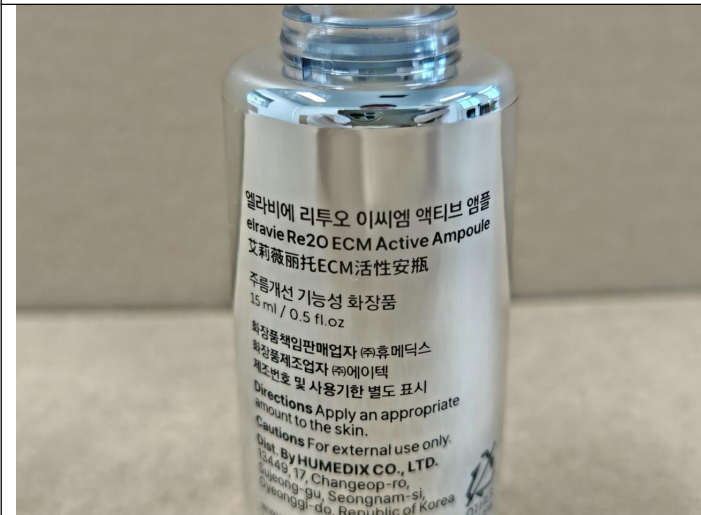
<p style="text-align: center;"><b>Opened carton</b></p> 	<p style="text-align: center;"><b>Carton specification</b></p> 
<p style="text-align: center;"><b>5-Ply of carton</b></p> 	<p style="text-align: center;"><b>Opened carton</b></p> 
<p style="text-align: center;"><b>56 products per epe foam tray</b></p>	<p style="text-align: center;"><b>12 epe foam trays per carton</b></p>
	
<p style="text-align: center;"><b>Product view</b></p>	<p style="text-align: center;"><b>Product view</b></p>



Product view



Product view



Product view



Product view



Product view



Product view



MT-INSPECTION

# Final Random Inspection Report

Report No.: MT-20260416-001



Product view



Product view



Product view



Product view

Item:M101204



Carton view



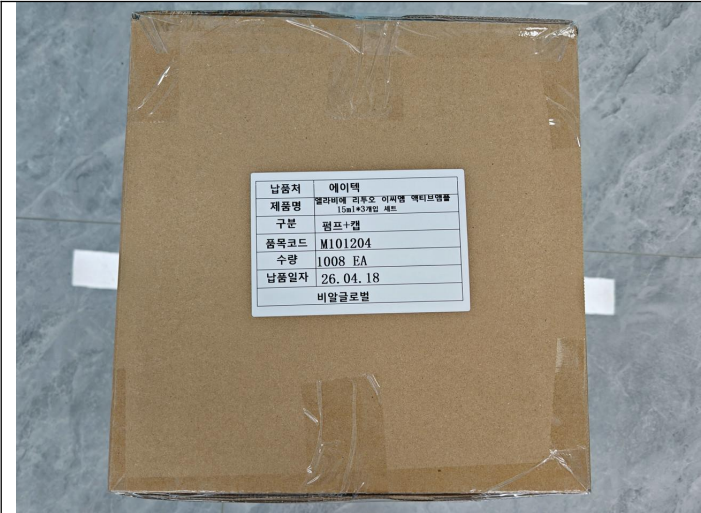
Carton view



MT-INSPECTION

# Final Random Inspection Report

Report No.: MT-20260416-001



납품처	에이텍
제품명	엘라비에 리투오 이씨엠 액티브앰플 15ml*3개입 세트
구분	펌프+캡
품목코드	M101204
수량	1008 EA
납품일자	26. 04. 18
비알글로벌	

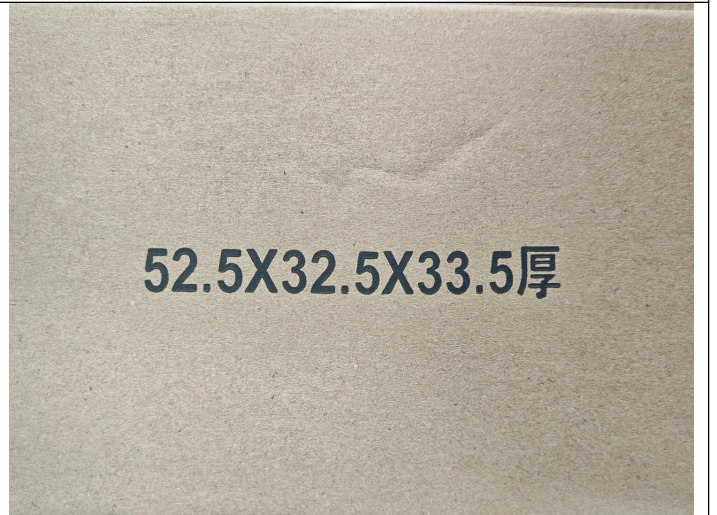
Side mark

납품처	에이텍
제품명	엘라비에 리투오 이씨엠 액티브앰플 15ml*3개입 세트
구분	펌프+캡
품목코드	M101204
수량	1008 EA
납품일자	26. 04. 18
비알글로벌	

Label information



Opened carton



52.5X32.5X33.5厚

Carton specification



Opened carton



5-Ply



MT-INSPECTION

# Final Random Inspection Report

Report No.: MT-20260416-001



**Opened carton**



**72 products per epe foam tray**



**14 epe foam trays per carton**



**Product view**



**Product view**



**Product view**



# Final Random Inspection Report



Product view



Product view

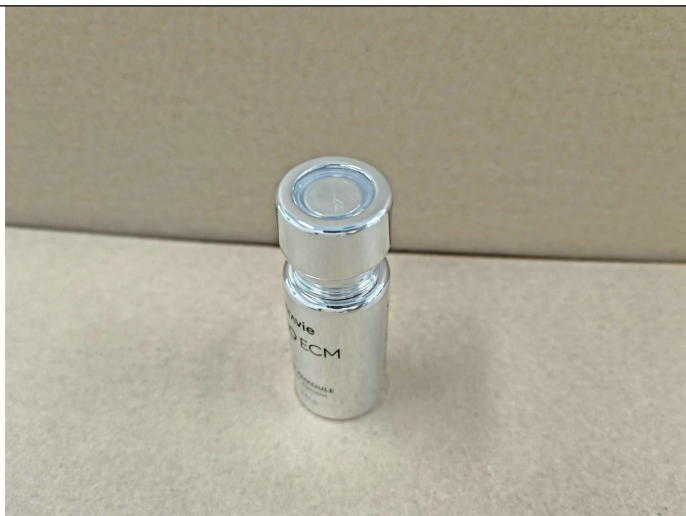


Product view

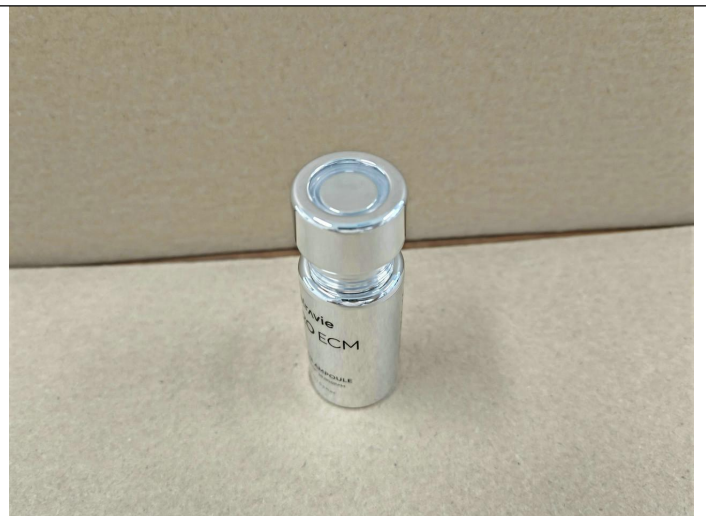


Product view

Item:M101203+M101204



Product view



Product view



Product view



Product view



Product view



Product view



Product view



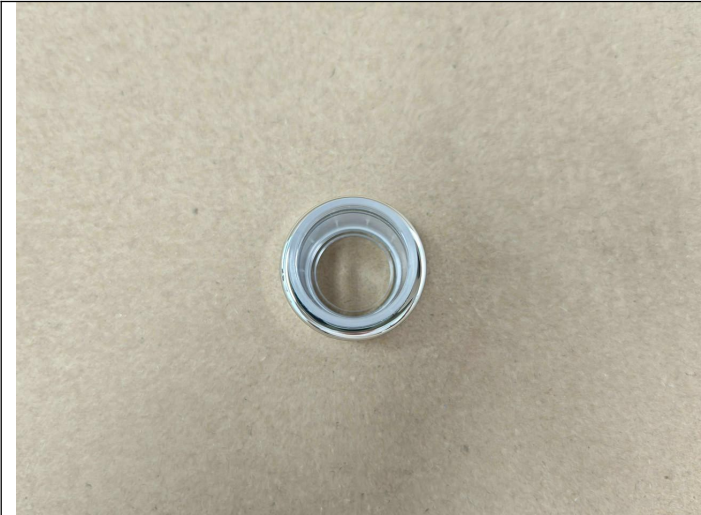
Product view



MT-INSPECTION

# Final Random Inspection Report

Report No.: MT-20260416-001



Product view



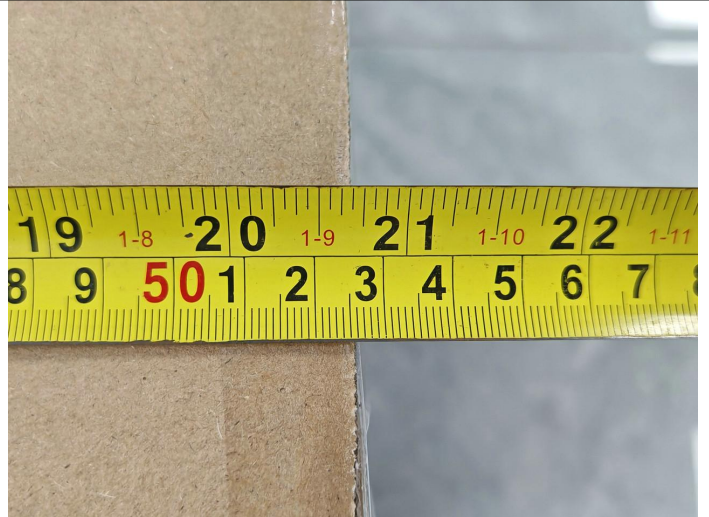
Product view

## Measurement and Test

Item: M101203



Carton size check



Length: 52.6cm



Carton size check



Width: 33.1cm



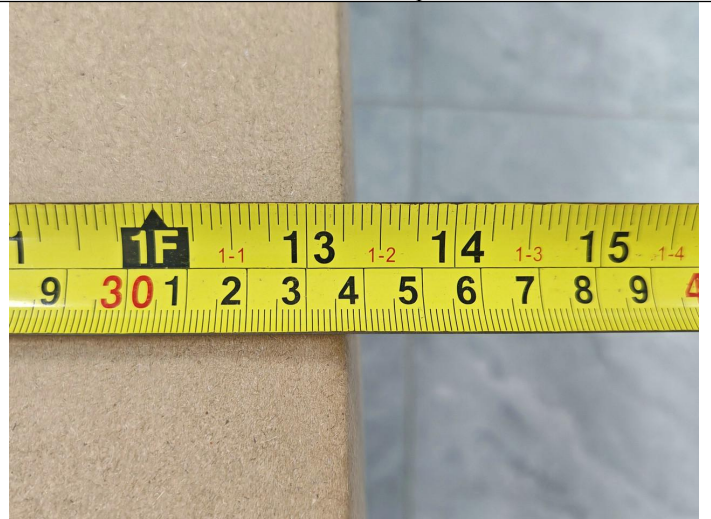
MT-INSPECTION

# Final Random Inspection Report

Report No.: MT-20260416-001



**Carton size check**



**Height:33.7cm**



**Carton weight check**



**Carton weight check:15.232kg**



**Product size check:28.71mm**



**Product size check:28.65mm**



MT-INSPECTION

# Final Random Inspection Report

Report No.: MT-20260416-001



**Product size check:61.51mm**



**Product weight check:20.89g**

**Item:M101204**



**Carton size check**



**Length:51.9cm**



**Carton size check**



**Width:33.1cm**



MT-INSPECTION

# Final Random Inspection Report

Report No.: MT-20260416-001



**Carton size check**



**Height:33.6cm**



**Carton weight check**



**Carton weight check:11.812kg**



**Product size check:26.99mm**



**Product size check:27.01mm**



MT-INSPECTION

# Final Random Inspection Report

Report No.: MT-20260416-001



Product size check:41.54mm



Product weight check:10.65g

Item:M101203+M101204



Product size check:28.64mm



Product size check:28.77mm



Product size check:83.15mm



Product weight check:31.7g



# Final Random Inspection Report



**Rubbing Test on Painting logo**



**Rubbing Test on Painting logo**



**Silk Screen Printing Adhesive Test**



**Silk Screen Printing Adhesive Test**



**Pull test on Snaps**



**Pull test on Snaps**



# Final Random Inspection Report



**Color shade check**



**Color shade check**



**Assembly check**



**Assembly check**



**Function check**



**Function check**



# Final Random Inspection Report



**Adhesive force test**



**Adhesive force test**



**Smell test**



**Smell test**



**Capacity check**



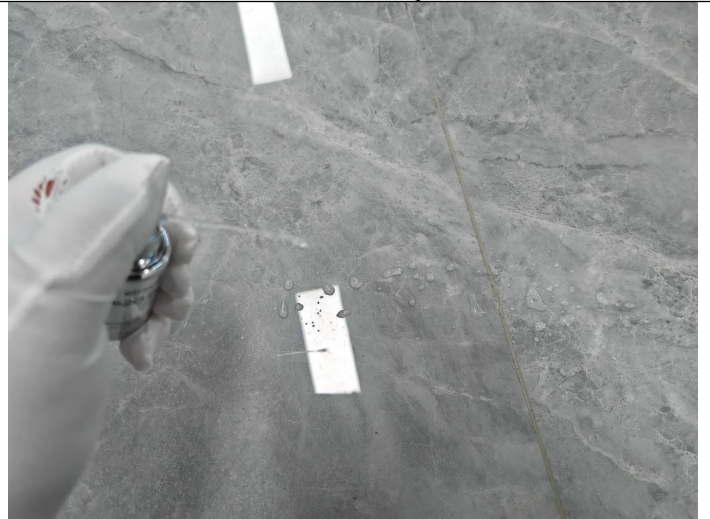
**Capacity check**



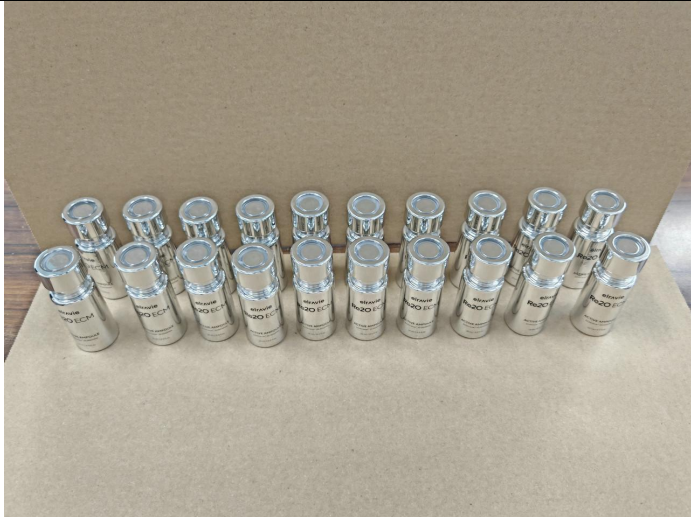
# Final Random Inspection Report



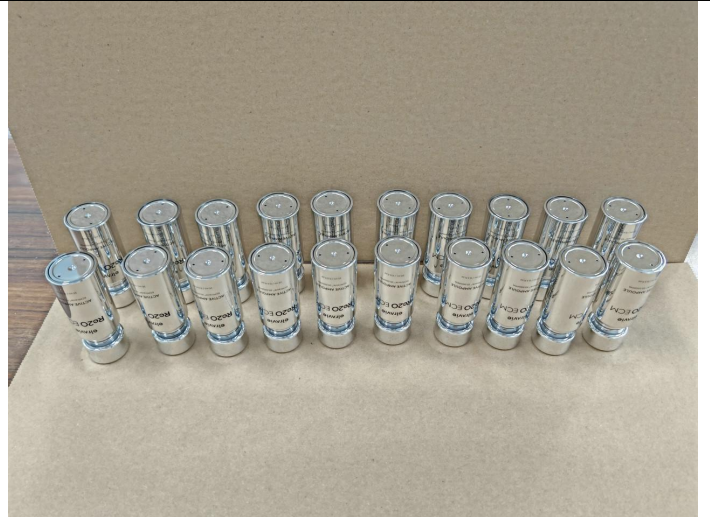
Using function check



Using function check



Leak test



Leak test



Vacuum test



Vacuum test



## Other photos



Factory gate



Carton storage



Carton storage



Inspection site

--The End Of Report--