



MT-INSPECTION

Final Random Inspection Report

Report No.: MT-20260420-001

GENERAL SUMMARY:

Client:	/	
PO No.:	/	
Item No.:	Flared leggings ,Performance Leggings	
Product Name:	Flared leggings ,Performance Leggings	
Quantity:	840pcs	
Inspection location:	Guangzhou,Guangdong, China	
Supplier:	Guangzhou Yalan Clothing Co.,Ltd	
Date of inspection:	Apr 20.2026	

OVERALL CONCLUSION:

Inspection criteria	Passed	Failed	Pending	Comments
Quantity available:	-	-	x	Remark 1
Product Conformity:	-	-	x	Remark 2
Workmanship:	x	-	-	Remark 5
Test and measurement:	x	-	-	-
Labeling:	x	-	-	-
Packing and shipping mark:	-	-	x	Remark 1,3,4
Result:	<input type="checkbox"/> Acceptable <input type="checkbox"/> Reject <input checked="" type="checkbox"/> Pending			

SPECIAL REMARK:

1.As of the time the inspector left the factory, all products had been completed and 30% of the products had been packed in plastic bags, but not in the outer box.

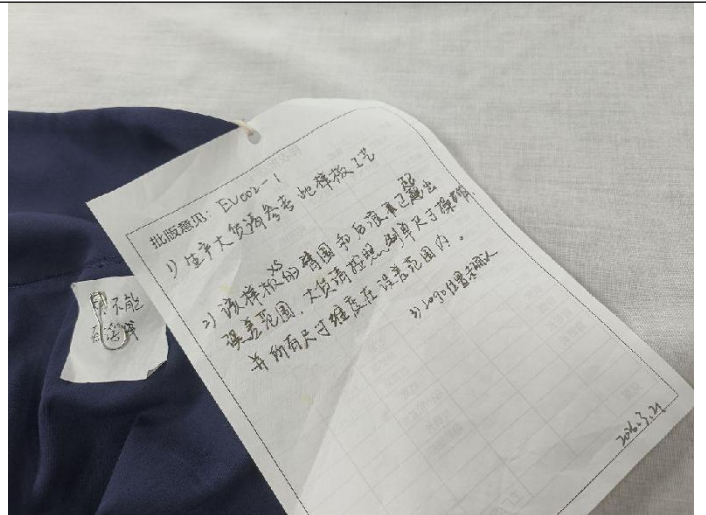
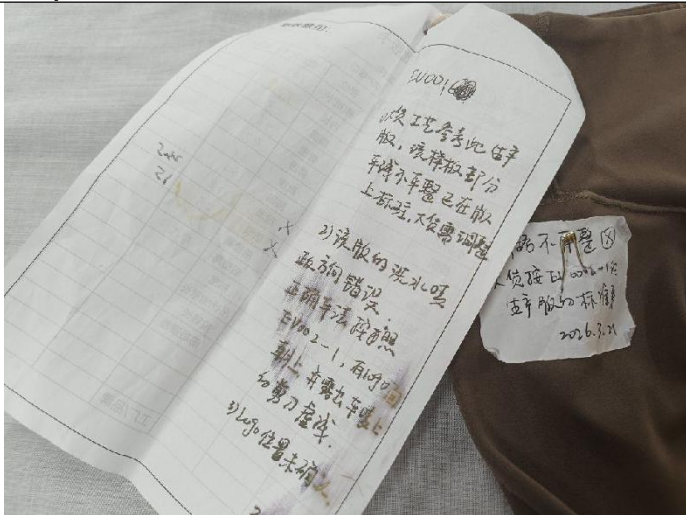




Final Random Inspection Report



2.The factory only provided some color production samples, and the actual material of the product is consistent with the samples.





MT-INSPECTION

Final Random Inspection Report

Report No.: MT-20260420-001



3.No shipping mark spec. available for comparison on site.

4.No packing method spec. available for comparison on site.

5.Selected 80 samples (30pcs in polybag , 50pcs has not out polybag)for inspection, found 2pcs major defect and 7pcs minor defect, for the defects found during inspection, the inspector had already shown to the factory and requested to replace these defects.

AVAILABLE QUANTITY:

Order No.	Item No.	Order Qty		Packed		Not finished		Not packed		Inspect Qty	
		pcs	ctn	pcs	ctn	pcs	ctn	pcs	ctn	pcs	ctn
-	Flared leggings	530	/	0	0	0	0	530	/	50	/
-	Performance Leggings	310	/	0	0	0	0	310	/	30	/
Total:		840	/	0	0	0	0	840	/	50	/



Final Random Inspection Report

Lot Size	General Inspection Levels			Special Inspection Levels			
	I	II	III	S1	S2	S3	S4
2 to 8	A	A	B	A	A	A	A
9 to 15	A	B	C	A	A	A	A
16 to 25	B	C	D	A	A	B	B
26 to 50	C	D	E	A	B	B	C
51 to 90	C	E	F	B	B	C	C
91 to 150	D	F	G	B	B	C	D
151 to 280	E	G	H	B	C	D	E
281 to 500	F	H	J	B	C	D	E
501 to 1,200	G	J	K	C	C	E	F
1,201 to 3,200	H	K	L	C	D	E	G
3,201 to 10,000	J	L	M	C	D	F	H
10,001 to 35,000	K	M	N	C	D	F	H
35,001 to 150,000	L	N	P	D	E	G	J
150,001 to 500,000	M	P	Q	D	E	G	J
500,001 and over	N	Q	R	D	E	H	K

Single sampling plans for normal inspection

Sample Size Code Letter	Sample Size	Acceptable Quality Levels (Normal Inspection)																							
		0.065		0.10		0.15		0.25		0.40		0.65		1.0		1.5		2.5		4.0		6.5			
A	2																						0	1	
B	3																								
C	5																								
D	8																								
E	13																								
F	20																								
G	32																								
H	50																								
J	80																								
K	125																								
L	200	0	1	0	1	0	1	0	1	0	1	0	1	0	1	0	1	0	1	0	1	0	1	0	1
M	315	0	1	0	1	1	2	1	2	2	3	2	3	3	4	4	5	4	5	5	6	6	7	6	7
N	500	0	1	1	2	2	3	3	4	4	5	5	6	6	7	7	8	8	9	9	10	10	11	11	12
P	800	1	2	2	3	3	4	4	5	5	6	6	7	7	8	8	9	9	10	10	11	11	12	12	13
Q	1250	2	3	3	4	4	5	5	6	6	7	7	8	8	9	9	10	10	11	11	12	12	13	13	14
R	2000	3	4	4	5	5	6	6	7	7	8	8	9	9	10	10	11	11	12	12	13	13	14	14	15

Inspection standard: <u>ANSI/ASQC Z1.4-2003</u> Sampling plan: <i>Single, Normal</i> Inspection level: II AQL: Critical: Not Allowed.	Sample Size: 80pcs			
	AQL:	0	2.5	4.0
	Defects Found:	0	2	7
	Max. Allowed:	0	5	7
	Sample Size:	80		

WORKMANSHIP:						
Item No.	Sample size	Defective rate	Defects Description	Cri	Maj	Min
Flared leggings	30pcs	3.75%	Untrimmed thread	0	0	3
		1.25%	Poor seam: fold	0	1	0
Performance Leggings	50pcs	5%	Untrimmed thread	0	0	4
		1.25%	Poor seam: dislocation	0	1	0
Total defect:				0	2	7
Allowed:				0	5	7
Result:				Pass		



Defect Pictures:

Item No: Flared leggings



Untrimmed thread -Minor



Untrimmed thread -Minor



Untrimmed thread -Minor






Poor seam: fold -Major

Item No: Performance Leggings





Final Random Inspection Report

Untrimmed thread -Minor	Poor seam: fold -Major
	
Untrimmed thread -Minor	Untrimmed thread -Minor
	N/A
Poor seam: dislocation -Major	

PRODUCT CONFORMITY & ON-SITE TESTS

Check Points & On-site Tests	Sample Size	Criteria	Result & Remarks
Visual Check (Style, Appearance, Material, Color)	All Sample size	a. Conformance to Style / Appearance / Material / Color compared against: <input type="checkbox"/> Client's / <input checked="" type="checkbox"/> Factory's ref. sample. <input type="checkbox"/> No ref. sample for comparison. (N.B.: Provide details in comment section if 2 or more color shades and/or any color variation is found.) b. Free of nick, burrs, pits, sharp point or any other defects which may affect the product serviceability. c. Finish/ coating is smooth and even without streaks, blisters, wrinkles, or runs. d. Good overall appearance with good alignment of components.	PENDING Remarks :2
Color Fastness Test	S-2	Dry/wet white cloth rubbing (dry white paper substitute if white cloth is not available)	PASS



MT-INSPECTION

Final Random Inspection Report

Report No.: MT-20260420-001

Rubbing Test on Painting logo	S-2	Wet rubbing by water for 15 seconds and then dried as per client's specification.	PASS	
Silk Screen Printing Adhesive Test	S-2	Stuck the 3M tape on the printing area and stayed for 30 seconds then torn off to see printing quality.	PASS	
Elasticity check	S-2	For buckle,zipper,snap,Velcro etc.) Quickly operate each buckle,zipper,snap,Velcro, etc. on each sample by 20 full cycles.	PASS	
Seam strength test	All Sample size	By hand force	PASS	
Stitches per inch	2pcs/item	Actual finding:15stitches	PASS	
Color shade check	S-2	No color discrepancy	PASS	
Barcode/QR code scanning test	S-2	Checked by scanner readable	PASS	
Export Carton Drop Test	1 Carton	Drop the carton for 10 times in the sequence of 1 corner, 3 edges and 6 faces with below criteria:	PENDING Remarks :1	
		Carton Gross Wt. (kg)		Drop Height (cm)
		0.5 kg – 9.5 kg		76cm
		≥ 9.5 kg – 18.6 g		61cm
		≥ 18.6 kg – 27.7 kg		46cm
		≥ 27.7 kg – 45.4 kg		31cm
45.4 kg – 68 kg	20cm			
Adhesive force test	2pcs	Adhesive force testing of inner pot painting: scratch 100 grids with size 1mm*1mm them test with tape 3M	PASS	
Smell test	All Sample size	No pungent smell come out	PASS	
Try on test	2pcs/item	Wear the clothes on Mott and check if they are perfect and beautiful.	PASS	

PACKING AND ACCESSORIES:

Item No.:	Master shipper (pcs/ctn)	Carton size L×W×H (cm)	G.W (Kg)	N.W (Kg)	Color box size L×W×H (cm)	Color box weight(g)	Carton Barcode	Color box Barcode
Flared leggings	/	/	/	/	/	/	/	/
Performance Leggings	/	/	/	/	/	/	/	/

PRODUCT SPECIFICATION:

Item No.:	Check point	Client Spec.	Ref. Sample	XS	S	M	L	XL	XXL
Flared leggings	Size check	/	/	Check below table					
	Weight check	/	/	0.2081	0.2260	0.2363	0.2654	0.2654	0.2862
Performance Leggings	Size check	/	/	Check below table					
	Weight check(kg)	/	/	0.1491	0.1583	0.1726	0.1862	0.1953	0.2076



MT-INSPECTION

Final Random Inspection Report

Report No.: MT-20260420-001

EVO01

Location (cm)	Degree method.	Range of error	XS	S	M	L	XL	XXL	Jump code
Waist Circumference (Full)	Straight measure across left/right waistband * 2	±1.8cm	47	52	57	62	67	72	5
Hip Circumference (Full)	Straight measure 7CM above the front crotch point	±1.8cm	65	70	75	80	85	90	5
Pants Length	Straight measure from top of waistband to hem (including hem allowance)	±1.5cm	105.5	106.5	107.5	108.5	109.5	110.5	1
Inseam	Straight measure from front crotch point to hem	±1.5cm	84	84.5	85	85.5	86	86.5	0.5
Front Rise	Straight measure along the front curve from top of waistband to crotch point	±1cm	23	23.5	24	24.5	25	25.5	0.5
Back Rise	Straight measure along the back curve from top of waistband to crotch point	±1.2cm	32.5	33	33.5	34	34.5	35	0.5
Front Center Waist Height	Straight measure from top of waistband to bottom of waistband	±0.5cm	10	10	10	10	10	10	0
Back Center Waist Height	Straight measure from top of waistband to bottom of waistband	±0.5cm	12.5	12.5	12.5	12.5	12.5	12.5	0
Side Waist Height	Straight measure from top of waistband to bottom of waistband	±0.5cm	8	8	8	8	8	8	0
Hem Width	Straight measure	±0.2cm	5	5	5	5	5	5	0
Hem Height	Straight measure	±0.2cm	5	5	5	5	5	5	0
Leg Opening Circumference	Straight measure full circumference	±1cm	47.5	50	52.5	55	57.5	60	2.5
Thigh Circumference	Measure 2cm down from the crotch point	±1cm	41.4	44	46.6	49.2	51.8	54.4	2.6

EVO02-1

Location (cm)	Degree method.	Range of error	XS	S	M	L	XL	XXL	Jump code
Waist Circumference (Full)	Straight measure across left/right waistband * 2	±1.8cm	47	52	57	62	67	72	5
Hip Circumference (Full)	Straight measure 7CM above the front crotch point	±1.8cm	65	70	75	80	85	90	5
Pants Length	Straight measure from top of waistband to hem (including hem allowance)	±1.5cm	88	89	90	91	92	93	1
Inseam	Straight measure from front crotch point to hem	±1.5cm	67	67.5	68	68.5	69	69.5	0.5
Front Rise	Straight measure along the front curve from top of waistband to crotch point	±1cm	23	23.5	24	24.5	25	25.5	0.5
Back Rise	Straight measure along the back curve from top of waistband to crotch point	±1.2cm	32.5	33	33.5	34	34.5	35	0.5
Front Center Waist Height	Straight measure from top of waistband to bottom of waistband	±0.5cm	10	10	10	10	10	10	0
Back Center Waist Height	Straight measure from top of waistband to bottom of waistband	±0.5cm	12.5	12.5	12.5	12.5	12.5	12.5	0
Side Waist Height	Straight measure from top of waistband to bottom of waistband	±0.5cm	8	8	8	8	8	8	0
Hem Width	Straight measure	±0.2cm	5	5	5	5	5	5	0
Hem Height	Straight measure	±0.2cm	5	5	5	5	5	5	0
Leg Opening Circumference	Straight measure full circumference	±1cm	18	19	20	21	22	23	1
Thigh Circumference	Measure 2cm down from the crotch point	±1cm	39.4	42	44.6	47.2	49.8	52.4	2.6

EXPORT CARTON INFORMATION:

Carton:	New export carton	/	Sealing:	Opaque gummed tape	/
Fastening:	Metal staples	/		Transparent gummed tape	/
Strapping:	Nylonx2	/		Paper tape	-
Material:	Ply of corrugated paper	/	Others:	-	



MT-INSPECTION

Final Random Inspection Report

Report No.: MT-20260420-001

Product photo show:

Item: Flared leggings

Article No:784 Brown:



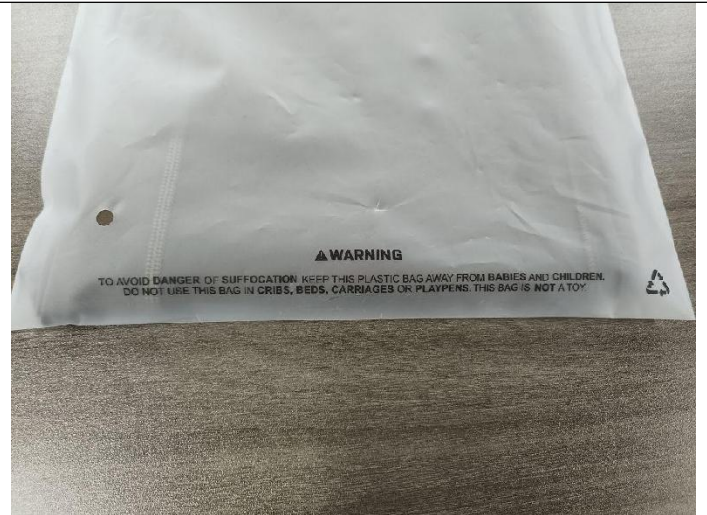
Packing view



Packing view



Packing view



Mark on polybag



Final Random Inspection Report



Label on polybag-XS



Label on polybag-S



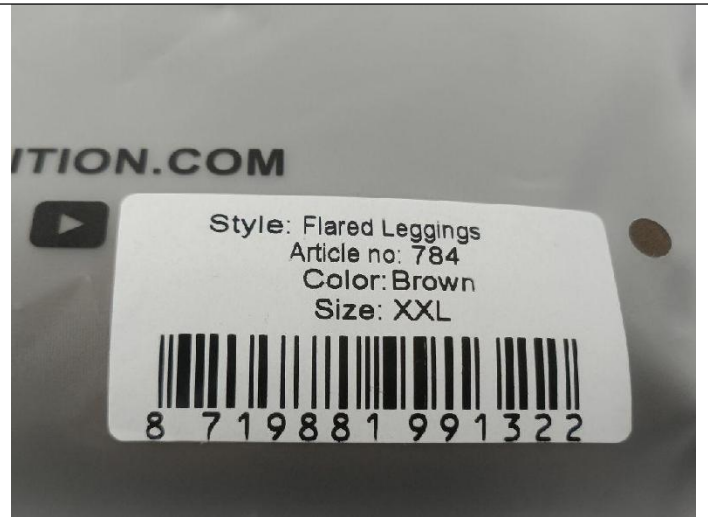
Label on polybag-M



Label on polybag-L



Label on polybag-XL



Label on polybag-XXL



MT-INSPECTION

Final Random Inspection Report

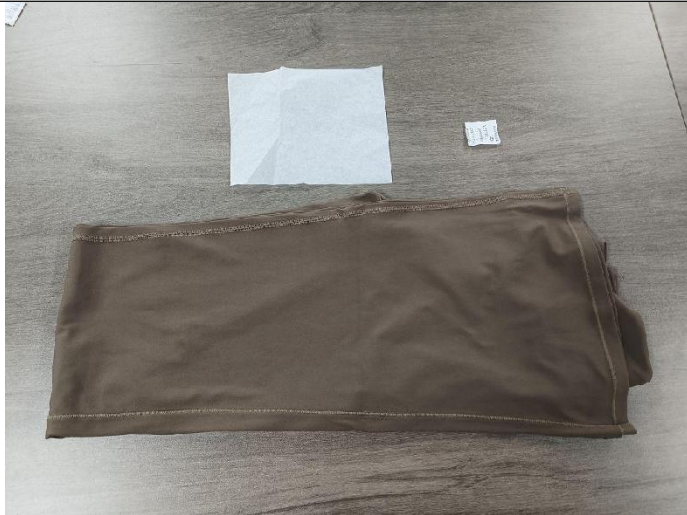
Report No.: MT-20260420-001



Packing view



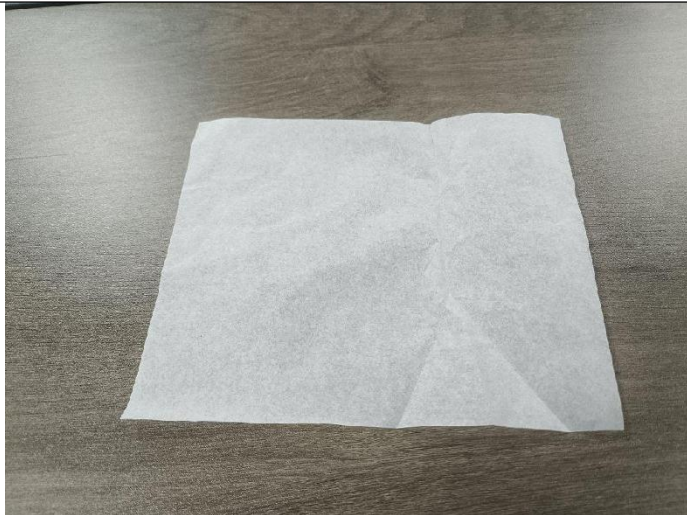
Packing view



Packing view



silica



Tissue paper



Hang tag view



MT-INSPECTION

Final Random Inspection Report

Report No.: MT-20260420-001



Hang tag view



Hang tag view



Size matching check



Sample and product



Sample and product



Product view



Final Random Inspection Report



Product view



Product view



Product view



Product view



Product view



Product view



MT-INSPECTION

Final Random Inspection Report

Report No.: MT-20260420-001

	
Product view	Product view
	
Product view	Product view
	
Product view	Product view



MT-INSPECTION

Final Random Inspection Report

Report No.: MT-20260420-001



Product view



Product view



Product view



Product view



Product view



Product view



MT-INSPECTION

Final Random Inspection Report

Report No.: MT-20260420-001



Product view



Product view



Product view



Product view



Product view



Product view

Article No:783 Black



Final Random Inspection Report



Label on polybag-XS



Label on polybag-S



Label on polybag-M



Label on polybag-L



Label on polybag-XL



Label on polybag-XXL



Packing view



Packing view



Hang tag & care label view-XS



Hang tag & care label view-S



Hang tag & care label view-M



Hang tag & care label view-L



MT-INSPECTION

Final Random Inspection Report

Report No.: MT-20260420-001



Hang tag & care label view-XL



Hang tag & care label view-XXL



Product view



Product view



Product view



Product view



Final Random Inspection Report

	
Product view	Product view
	
Product view	Product view
	
Product view	Product view



MT-INSPECTION

Final Random Inspection Report

Report No.: MT-20260420-001



Product view



Product view



Product view



Product view



Product view



Product view



MT-INSPECTION

Final Random Inspection Report

Report No.: MT-20260420-001



Product view



Product view



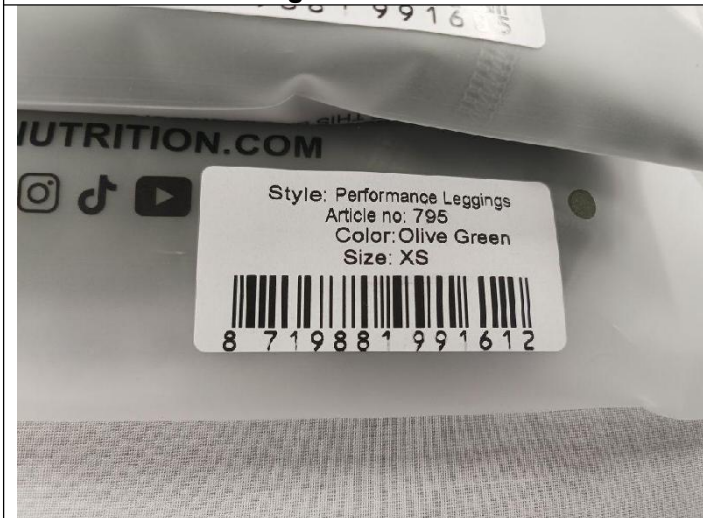
Product view



Sample and product

Item: Performance Leggings

Article no: 795 Olive green



Label on polybag-XS



Label on polybag-S



MT-INSPECTION

Final Random Inspection Report

Report No.: MT-20260420-001



Label on polybag-M



Label on polybag-L



Label on polybag-XL



Label on polybag-XXL



Packing view



Packing view



MT-INSPECTION

Final Random Inspection Report

Report No.: MT-20260420-001



Packing view



Packing view



Polybag



Polybag



Packing view



Packing view



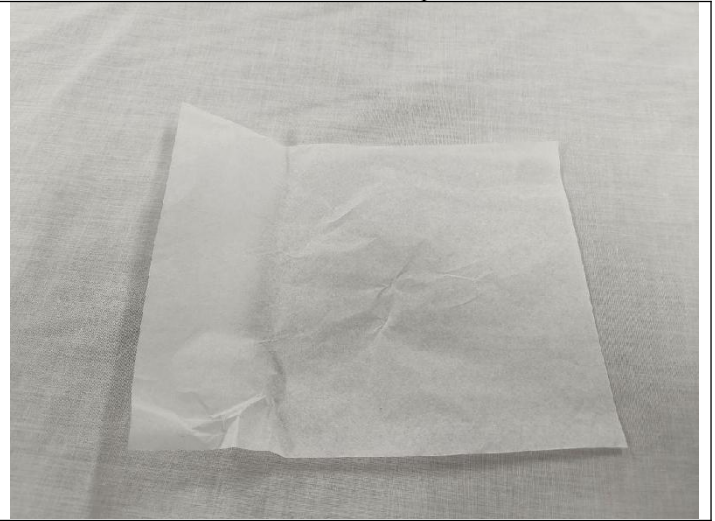
MT-INSPECTION

Final Random Inspection Report

Report No.: MT-20260420-001



Packing view



Tissue paper



Silica



Hang tag & care label-XS



Hang tag & care label-S



Hang tag & care label-M



MT-INSPECTION

Final Random Inspection Report

Report No.: MT-20260420-001



Hang tag & care label-L



Hang tag & care label-XL



Hang tag & care label-XXL



Sample and product



Product view



Product view



MT-INSPECTION

Final Random Inspection Report

Report No.: MT-20260420-001



Product view



Product view



Product view



Product view



Product view



Product view



MT-INSPECTION

Final Random Inspection Report

Report No.: MT-20260420-001



Product view



Product view



Product view



Product view



Product view



Product view



MT-INSPECTION

Final Random Inspection Report

Report No.: MT-20260420-001



Product view



Product view



Product view



Product view



Product view



Product view



MT-INSPECTION

Final Random Inspection Report

Report No.: MT-20260420-001



Care label



Care label



Product view



Product view

Article no:796 Indigo



Hang tag & care label-XS



Hang tag & care label-S



MT-INSPECTION

Final Random Inspection Report

Report No.: MT-20260420-001



Hang tag & care label-M



Hang tag & care label-L



Hang tag & care label-XL



Hang tag & care label-XXL



Sample and product



Product view



MT-INSPECTION

Final Random Inspection Report

Report No.: MT-20260420-001



Product view



Product view



Product view



Product view



Product view



Product view



Final Random Inspection Report



Product view



Product view



Product view



Product view



Product view



Product view



MT-INSPECTION

Final Random Inspection Report

Report No.: MT-20260420-001



Care label

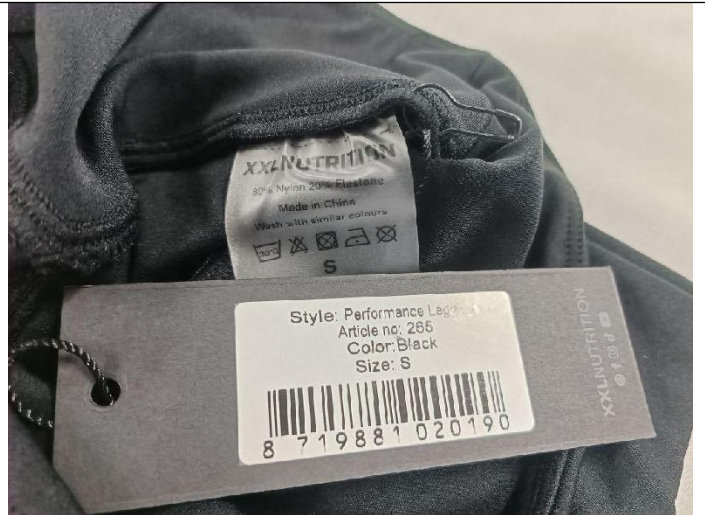


Product view

Article no:265 Black



Hang tag & care label-XS



Hang tag & care label-S



Hang tag & care label-M



Hang tag & care label-L



Final Random Inspection Report



Hang tag & care label-XL



Hang tag & care label-XXL



Sample and product



Product view



Product view



Product view



Final Random Inspection Report



Product view



Product view



Product view



Product view



Product view



Product view



MT-INSPECTION

Final Random Inspection Report

Report No.: MT-20260420-001



Product view



Product view



Product view



Care label



Product view



Product view



Measurement and Test

Item: Flared leggings



Unit packing weight:0.2388kg



Product weight:0.2081kg



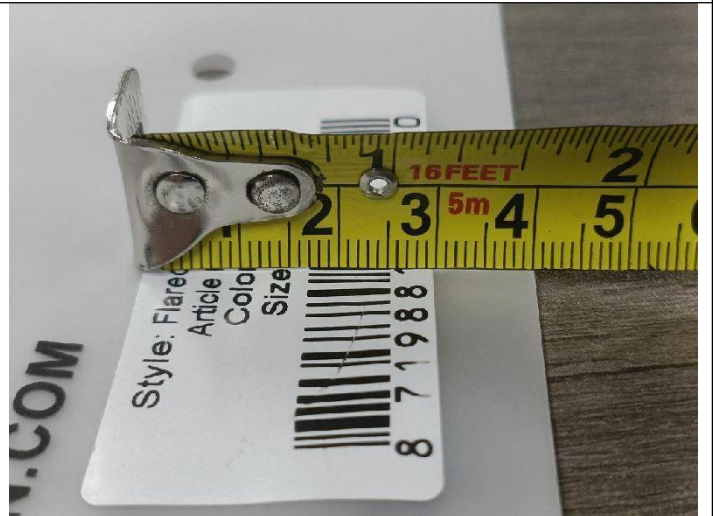
Label size :3.7cm



Label size:3.7cm



Label size:6cm



Label size:3cm



MT-INSPECTION

Final Random Inspection Report

Report No.: MT-20260420-001



Logo size:5cm



Logo size:0.78cm



Barcode scanning test



Barcode scanning test



Color shade check



Color shade check



MT-INSPECTION

Final Random Inspection Report

Report No.: MT-20260420-001



Smell check



Smell check



Stitches per inch



Stitches per inch



Color Fastness Test



Color Fastness Test



Final Random Inspection Report



Color Fastness Test



Color Fastness Test



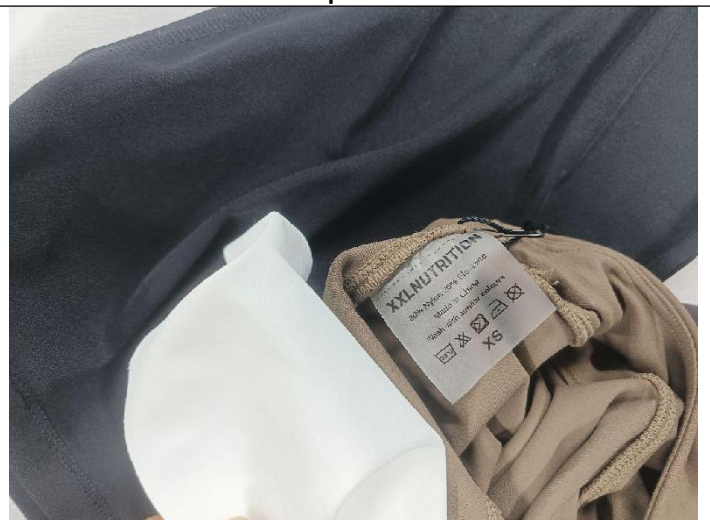
Tape test



Tape test



Rub test



Rub test



MT-INSPECTION

Final Random Inspection Report

Report No.: MT-20260420-001



Label position 1.5cm



Logo position 4.5cm



Try on test



Try on test



Elasticity check



Elasticity check



Final Random Inspection Report



Elasticity check



Elasticity check



Seam strength test



Seam strength test



Adhesive Test



Adhesive Test



MT-INSPECTION

Final Random Inspection Report

Report No.: MT-20260420-001



Adhesive Test



Adhesive Test



Size check

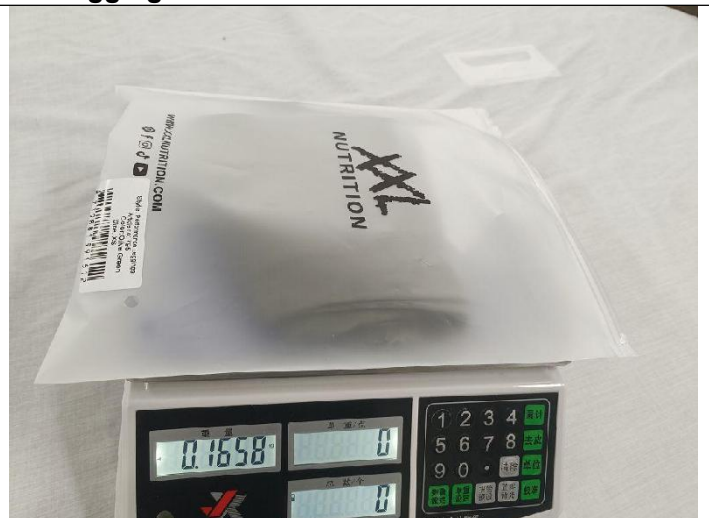
Location(cm)	Requirement	Range of val	OK	F	M	L	XL	XXL	XXXL	Pass rate
Waist - waistband (cm)	Waistband should be 2cm wider than the body of the garment	11.5cm	50	✓	✓	✓	✓	✓	✓	100%
Waistband width (cm)	Waistband width should be 2cm wider than the body of the garment	11.5cm	50	✓	✓	✓	✓	✓	✓	100%
Waistband length (cm)	Waistband length should be 2cm wider than the body of the garment	11.5cm	50	✓	✓	✓	✓	✓	✓	100%
Waistband elasticity	Waistband should be elastic	11.5cm	50	✓	✓	✓	✓	✓	✓	100%
Waistband stitching	Waistband stitching should be even	11.5cm	50	✓	✓	✓	✓	✓	✓	100%
Waistband label	Waistband label should be clear and legible	11.5cm	50	✓	✓	✓	✓	✓	✓	100%
Waistband color	Waistband color should be consistent with the rest of the garment	11.5cm	50	✓	✓	✓	✓	✓	✓	100%
Waistband texture	Waistband texture should be soft and comfortable	11.5cm	50	✓	✓	✓	✓	✓	✓	100%
Waistband durability	Waistband should be durable	11.5cm	50	✓	✓	✓	✓	✓	✓	100%
Waistband safety	Waistband should be safe	11.5cm	50	✓	✓	✓	✓	✓	✓	100%
Waistband hygiene	Waistband should be hygienic	11.5cm	50	✓	✓	✓	✓	✓	✓	100%
Waistband comfort	Waistband should be comfortable	11.5cm	50	✓	✓	✓	✓	✓	✓	100%
Waistband fit	Waistband should fit properly	11.5cm	50	✓	✓	✓	✓	✓	✓	100%
Waistband appearance	Waistband should look good	11.5cm	50	✓	✓	✓	✓	✓	✓	100%
Waistband quality	Waistband should be of high quality	11.5cm	50	✓	✓	✓	✓	✓	✓	100%
Waistband value	Waistband should be of good value	11.5cm	50	✓	✓	✓	✓	✓	✓	100%
Waistband customer satisfaction	Waistband should satisfy the customer	11.5cm	50	✓	✓	✓	✓	✓	✓	100%
Waistband overall performance	Waistband should perform well overall	11.5cm	50	✓	✓	✓	✓	✓	✓	100%

Size check

Item:Performance Leggings



Unit packing weight:0.1491kg



Product weight:0.1658kgs



MT-INSPECTION

Final Random Inspection Report

Report No.: MT-20260420-001



Label size :3.7cm



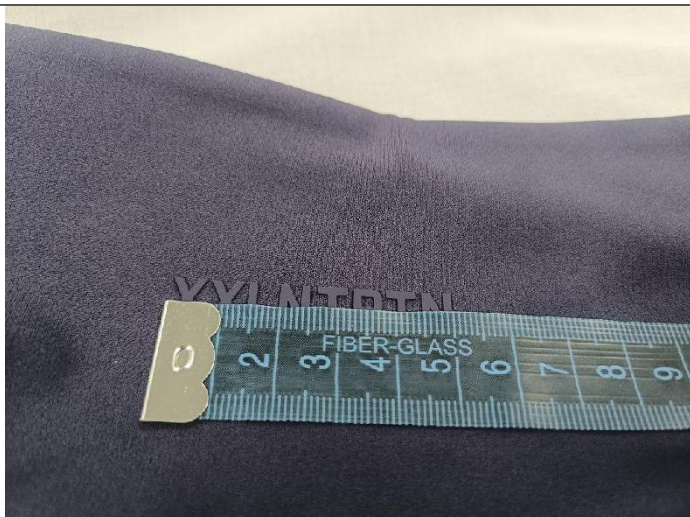
Label size:3.7cm



Label size:6cm



Label size: 3cm



Logo size:5cm



Logo size:0.78cm



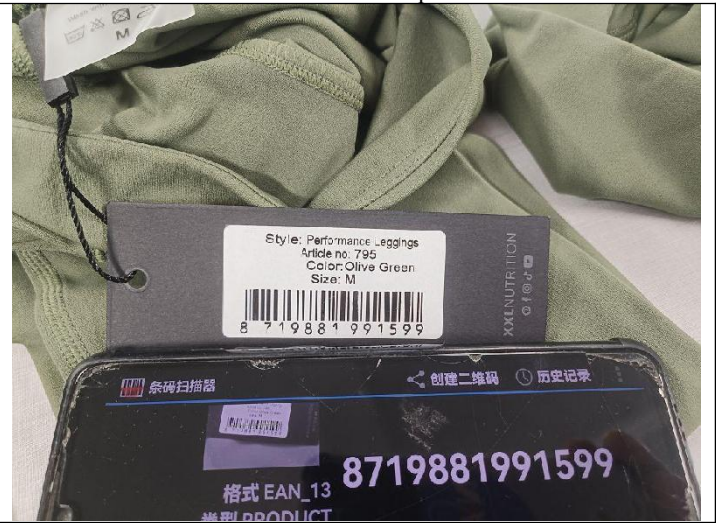
MT-INSPECTION

Final Random Inspection Report

Report No.: MT-20260420-001



Barcode scanning test



Barcode scanning test



Color shade check



Color shade check



Color shade check



Smell check



MT-INSPECTION

Final Random Inspection Report

Report No.: MT-20260420-001



Smell check



Smell check



Stitches per inch



Stitches per inch



Color Fastness Test



Color Fastness Test



Final Random Inspection Report



Color Fastness Test



Color Fastness Test



Color Fastness Test



Color Fastness Test



Tape test



Tape test



Final Random Inspection Report



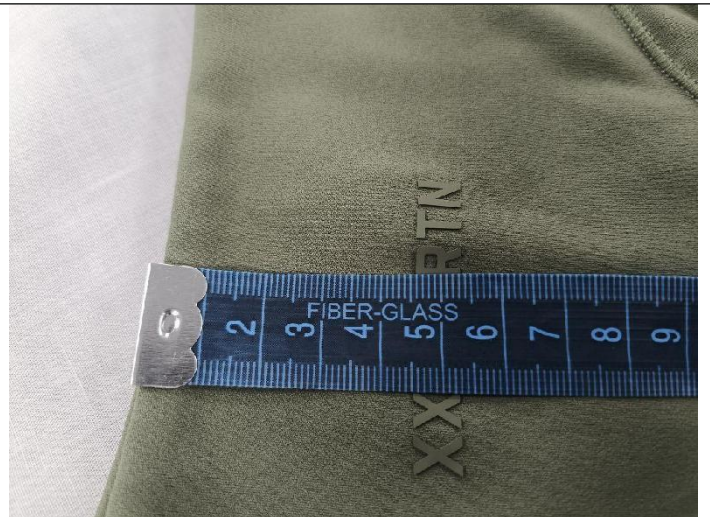
Rub test



Rub test



Label position 1.5cm



Logo position 4.5cm



Try on test



Try on test



Final Random Inspection Report



Try on test



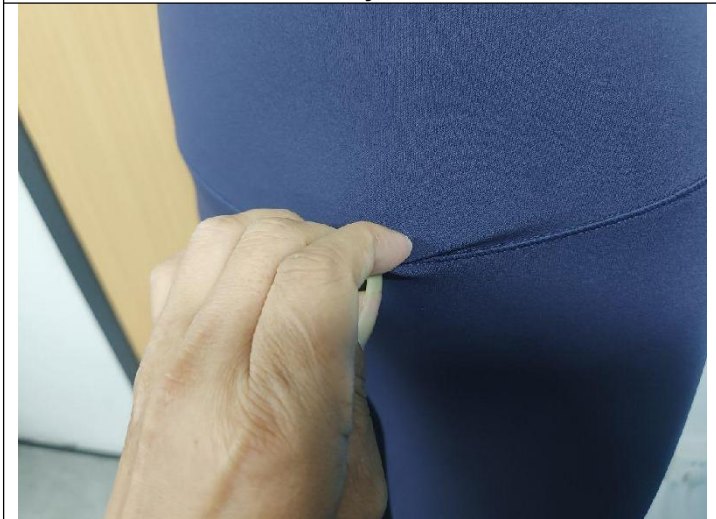
Try on test



Elasticity check



Elasticity check



Elasticity check



Elasticity check



Final Random Inspection Report



Elasticity check



Elasticity check



Seam strength test



Seam strength test



Seam strength test



Adhesive Test



MT-INSPECTION

Final Random Inspection Report

Report No.: MT-20260420-001



Adhesive Test



Adhesive Test



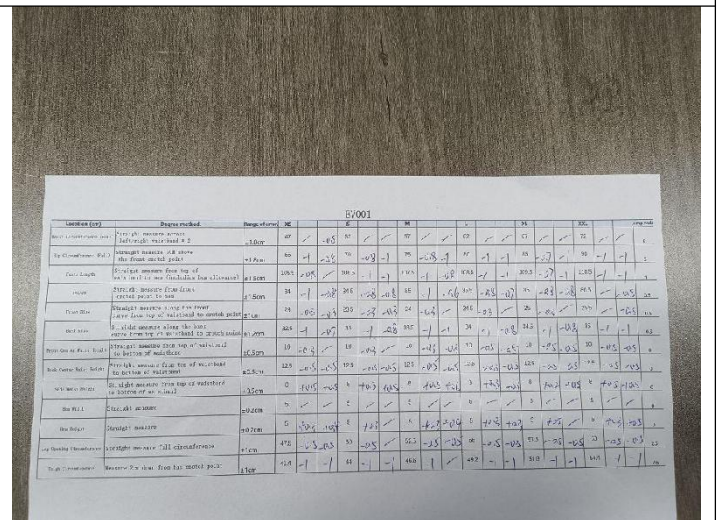
Adhesive Test



Adhesive Test



Size check



Size check



Other photos



Factory gate



Workshop



Workshop



Workshop



Finished goods



Finished goods



MT-INSPECTION

Final Random Inspection Report

Report No.: MT-20260420-001



Inspection site



Inspection site

--The End Of Report--