



MT-INSPECTION

Final Random Inspection Report

Report No.: MT-20260427-001

GENERAL SUMMARY:

Client:	-
PO No.:	-
Item No.:	OT2001
Product Name:	Smart Treat Dispenser
Quantity:	516pcs/43ctns
Inspection location:	Shenzhen, Guangdong
Supplier:	TANY Technology Co., Ltd
Date of inspection:	April 27, 2026



OVERALL CONCLUSION:

Inspection criteria	Passed	Failed	Pending	Comments
Quantity available:	×	-	-	Remark 1
Product Conformity:	-	-	×	Remark 2
Workmanship:	-	×	-	Remark 4,5
Test and measurement:	-	-	×	Remark 8
Labeling:	×	-	-	
Packing and shipping mark:	-	-	×	Remark 3,6,7
Result:	<input type="checkbox"/> Acceptable		<input type="checkbox"/> Reject	<input checked="" type="checkbox"/> Pending

SPECIAL REMARK:

- 1.Upon the arrival, all products were finished and all packed into cartons.
- 2.There's no approved sample providing for reference during inspection.
- 3.No packing method spec. available for comparison on site.
- 4.The number of minor defects exceeds the acceptable range of AQL.
- 5.Selected 80pcs/7cartons samples for inspection, found 9 pcs minor defect, for the defects found during inspection, the inspector had already shown to the factory and requested to replace these defects.
- 6.The size of the export carton is too large,there is 3cm empty gap.



- 7.The Bubble bag length is 30*35cm,without airhole on it.
- 8.Factory refused to do carton drop test due not extra carton and gift box to replace.



Final Random Inspection Report

AVAILABLE QUANTITY:

Order No.	Item No.	Order Qty		Packed		Not finished		Not packed		Inspect Qty	
		pcs	ctn	pcs	ctn	pcs	ctn	pcs	ctn	pcs	ctn
-	OT2001(USA)	408	34	408	34	0	0	0	0	56	5
	OT2001(CA)	108	9	108	9	0	0	0	0	24	2
Total:		516	43	516	43	0	0	0	0	80	7

Inspection standard: ANSI/ASQC Z1.4-2003 Sampling plan: <i>Single, Normal</i> Inspection level: II AQL: Critical: Not Allowed.	Sample Size:80pcs/7ctns			
	AQL:	Critical	Major	Minor
	Defects Found:	0	2.5	4.0
	Max. Allowed:	0	5	7

WORKMANSHIP:

Item No.	Sample size	Defective rate	Defects Description	Cri	Maj	Min
OT2001	80 PCS	11.25%	Surface stain	0	0	9
Total defect:				0	0	9
Allowed:				0	5	7
Result:				Failed		

Defect Pictures:

Item No:OT2001

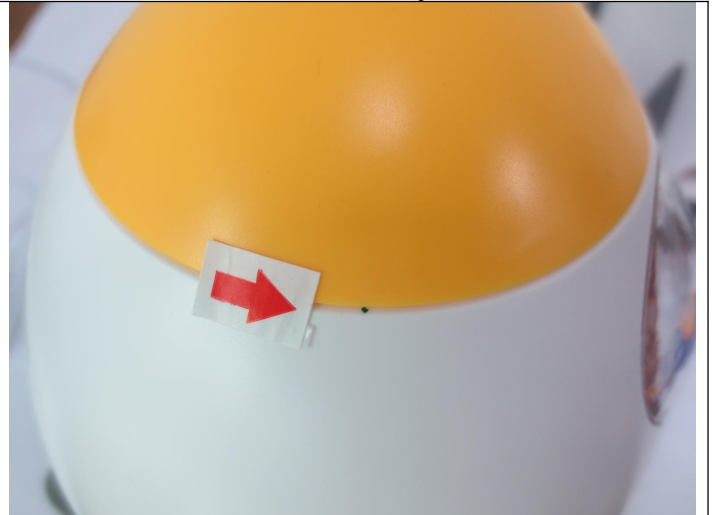


Surface stain-Minor

Surface stain-Minor



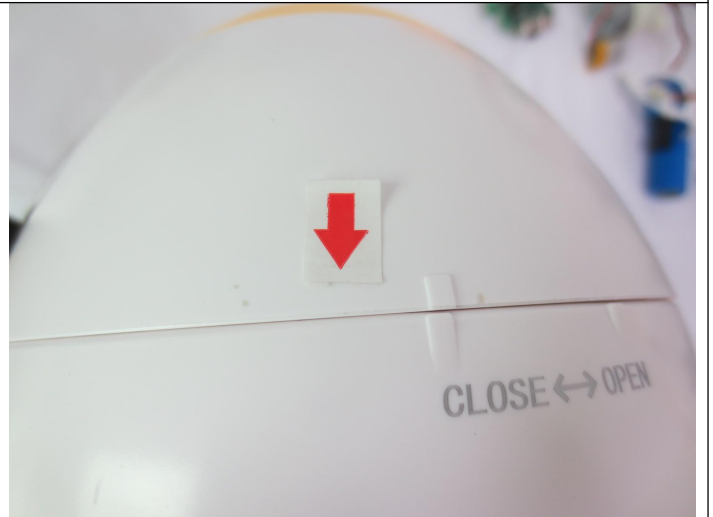
Surface stain-Minor



Surface stain-Minor



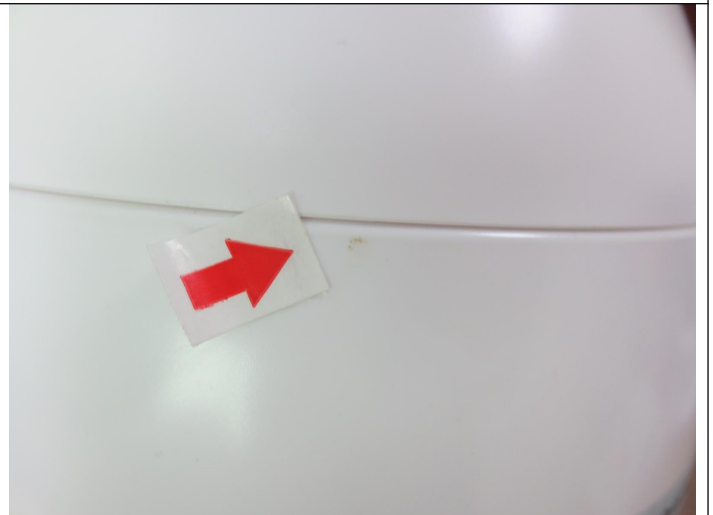
Surface stain-Minor



Surface stain-Minor




Surface stain-Minor



Surface stain-Minor



Final Random Inspection Report

	<p>N/A</p>
<p>Surface stain-Minor</p>	

PRODUCT CONFORMITY & ON-SITE TESTS

Check Points & On-site Tests	Sample Size	Criteria	Result & Remarks												
Visual Check (Style, Appearance, Material, Color)	All Sample size	a. Conformance to Style / Appearance / Material / Color compared against: <input type="checkbox"/> Client's / <input type="checkbox"/> Factory's ref. sample. <input checked="" type="checkbox"/> No ref. sample for comparison. (N.B.: Provide details in comment section if 2 or more color shades and/or any color variation is found.) b. Free of nick, burrs, pits, sharp point or any other defects which may affect the product serviceability. c. Finish/ coating is smooth and even without streaks, blisters, wrinkles, or runs. d. Good overall appearance with good alignment of components.	<p>PENDING</p> <p>Remarks: 2</p>												
Rubbing Test on Painting logo	S-2	Wet rubbing by water for 15 seconds and then dried as per client's specification.	PASS												
Color shade check	S-2	No color discrepancy	PASS												
Barcode/QR code scanning test	S-2	Checked by scanner readable	PASS												
Export Carton Drop Test	1 Carton	Drop the carton for 10 times in the sequence of 1 corner, 3 edges and 6 faces with below criteria:	<p>PENDING</p> <p>Remarks : 8</p>												
		<table border="1" style="width: 100%; border-collapse: collapse;"> <thead> <tr> <th style="width: 50%;">Carton Gross Wt. (kg)</th> <th style="width: 50%;">Drop Height (cm)</th> </tr> </thead> <tbody> <tr> <td>0.5 kg – 9.5 kg</td> <td>76cm</td> </tr> <tr> <td>≧ 9.5 kg – 18.6 g</td> <td>61cm</td> </tr> <tr> <td>≧ 18.6 kg – 27.7 kg</td> <td>46cm</td> </tr> <tr> <td>≧ 27.7 kg – 45.4 kg</td> <td>31cm</td> </tr> <tr> <td>45.4 kg – 68 kg</td> <td>20cm</td> </tr> </tbody> </table>		Carton Gross Wt. (kg)	Drop Height (cm)	0.5 kg – 9.5 kg	76cm	≧ 9.5 kg – 18.6 g	61cm	≧ 18.6 kg – 27.7 kg	46cm	≧ 27.7 kg – 45.4 kg	31cm	45.4 kg – 68 kg	20cm
		Carton Gross Wt. (kg)		Drop Height (cm)											
		0.5 kg – 9.5 kg		76cm											
		≧ 9.5 kg – 18.6 g		61cm											
		≧ 18.6 kg – 27.7 kg		46cm											
≧ 27.7 kg – 45.4 kg	31cm														
45.4 kg – 68 kg	20cm														
Assembly/ installation check	S-2	Assembly/ installation according to the instruction manual or guide on package to see the component is complete, assembly steps is suitable & the finished product is good performance	PASS												
Function check	S-2	All captioned function is well conducted as intended. Such as installation/adjusting, actual	PASS												



MT-INSPECTION

Final Random Inspection Report

Report No.: MT-20260427-001

		using function etc. All of function should be complied with claims.	
Drop test (for portable product which would be dropped on floor)	1pc	Freely drop the unit from a height of 1000mm onto a smooth concrete floor with 3mmT vinyl tile for 3 times by different position, check the product unit after each drop. No any malfunction /construction broken / sharp point or edge or other major defect be found.	PASS
Adhesive force test	2pcs	Adhesive force testing of inner pot painting: scratch 100 grids with size 1mm*1mm them test with tape 3M	PASS
Smell test	All Sample size	No pungent smell come out	PASS
Using function check	2pcs	According Instruction Manual	PASS
Running/aging test	10pcs per item	Operate the dog feeder continuously for 24 hours at 110% rated voltage. Check for smooth operation,abnormal noise, and physical integrity. Pass if no failures.	PASS
Charging test	S-2	Fully charge the feeder via its designated adapter. Verify that the battery reaches a full state, the charging indicator functions correctly, and the device operates normally post-charge. Pass criteria: No charging faults, overheating, or safety issues.	PASS
Charging current test S	S-2	Charging current test was performed. Measured input current at rated voltage complied with the specified value.	PASS
Remote control distance test(20m)	S-2	Using the designated remote, all functions (feed, record, etc.) are tested at a 20-meter line-of-sight distance. The feeder must respond correctly to every command.	PASS
Recording test	S-2	Verifies pre-recorded feeding reminder audio plays correctly. Unit passes if playback is clear, undistorted, and at audible volume for pet recognition.	PASS
Internal check	1pc/item	Internal check: Opened housing to inspect internal components. Verified wiring connections are secure and no debris present. Structural integrity confirmed.Pass.	PASS
Speaker impedance test	S-2	Measure the speaker's impedance at 1kHz using an LCR meter. The measured value must be within $\pm 15\%$ of the product's rated impedance specification.	PASS
Battery voltage test	S-2	Battery Voltage Test: Measured no-load voltage of installed new batteries using a multimeter. Result must meet rated voltage (e.g., 1.5V per AA cell).	PASS

PACKING AND ACCESSORIES:

Item No.:	Master shipper (pcs/ctn)	Carton size L×W×H (cm)	G.W (Kg)	N.W (Kg)	Color box size L×W×H (cm)	Color box weight(g)	Carton Barcode	Color box Barcode
OT2001(USA)	12	50×50.5×34	12.6	11.5	16×16×23	1910-1920	FBA19C167RK6U 000001-000034	199284315785
OT2001(CA)	12	50×50.5×34	12.6	11.5	16×16×23	1910-1920	FBA19BT867T0U 000001-000009	199284315785

PRODUCT SPECIFICATION:

Item No.:	Check point	Client Spec.	Ref. Sample	Sample 1#	Sample 2#	Sample 3 #
OT2001	Product size (cm)	-	-	15x15x22.5	15x15x22.5	15x15x22.5
	Charge cable size (cm)	-	-	100	98	99



MT-INSPECTION

Final Random Inspection Report

Report No.: MT-20260427-001

Product weight(g)	-	-	1250	1251	1249
Product weight-1set(g)	-	-	1611	1612	1610

EXPORT CARTON INFORMATION:

Carton:	New export carton	Yes	Sealing:	Opaque gummed tape	-
Fastening:	Metal staples	No		Transparent gummed tape	Yes
Strapping:	Nylonx2	No		Paper tape	-
Material:	Ply of corrugated paper	5ply	Others:	-	

Product photo show:

Item:OT2001(USA)



Carton View



Carton View



Carton View



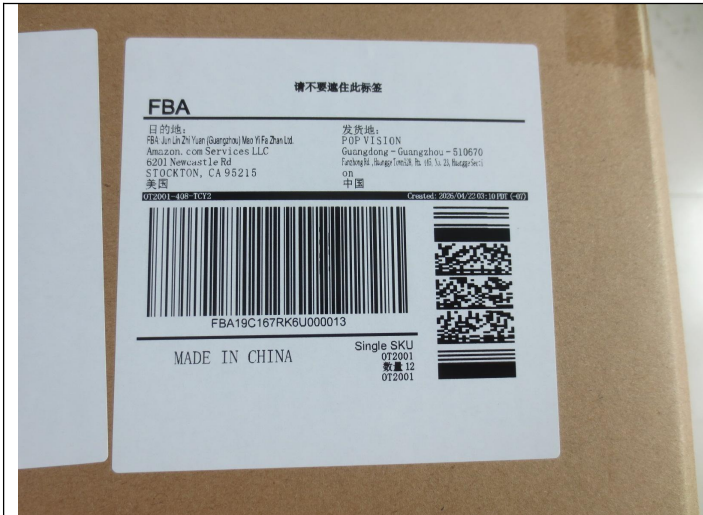
Carton View



MT-INSPECTION

Final Random Inspection Report

Report No.: MT-20260427-001



Carton View



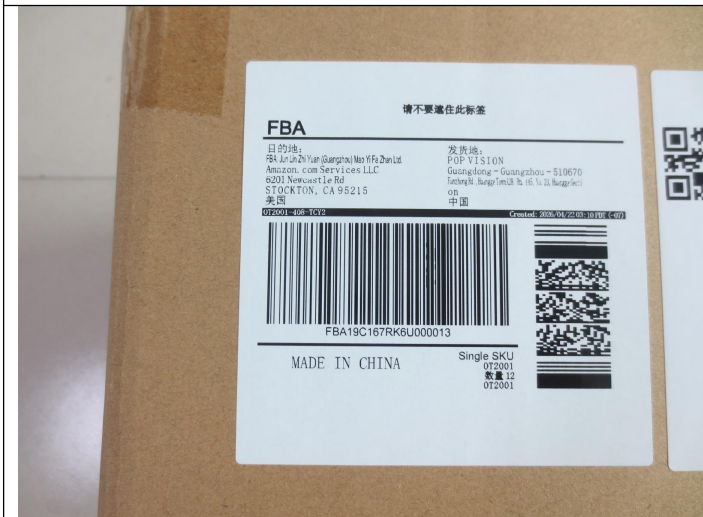
Carton View



Carton View



Carton View



Carton View



Carton View



MT-INSPECTION

Final Random Inspection Report

Report No.: MT-20260427-001



Carton packaging view



Carton packaging view



Carton packaging view



Carton packaging view



Carton packaging view



Carton packaging view



Final Random Inspection Report



Gift box view



Gift box view



Gift box view



Gift box view



Gift box view



Gift box view



Gift box view



Gift box view



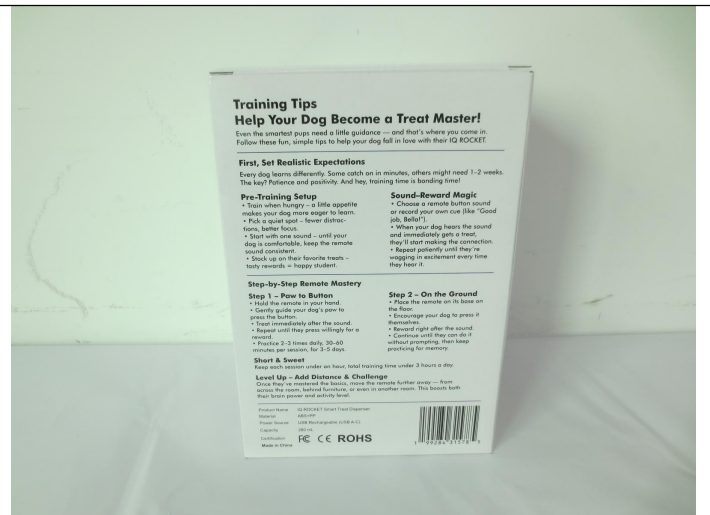
Gift box view



Gift box view



Gift box view



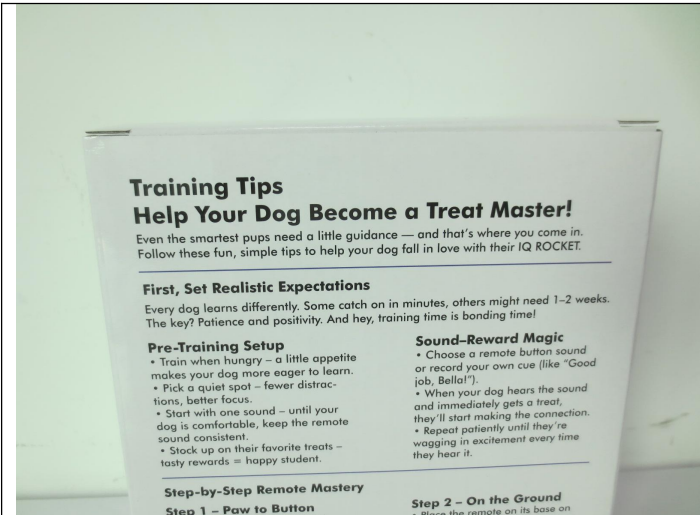
Gift box view



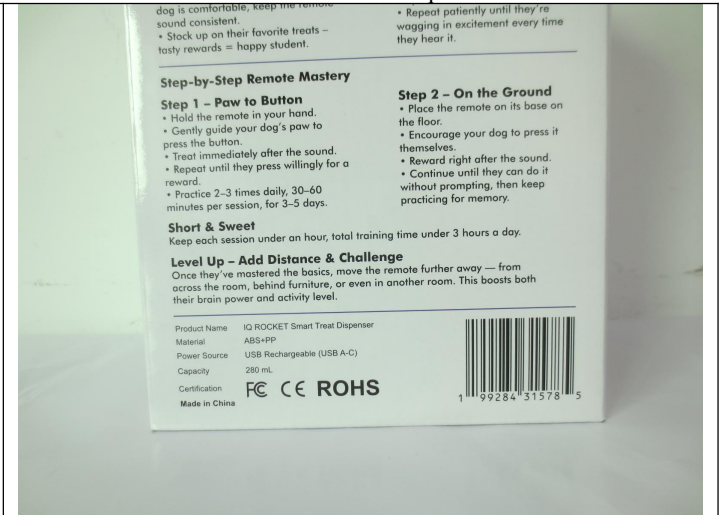
MT-INSPECTION

Final Random Inspection Report

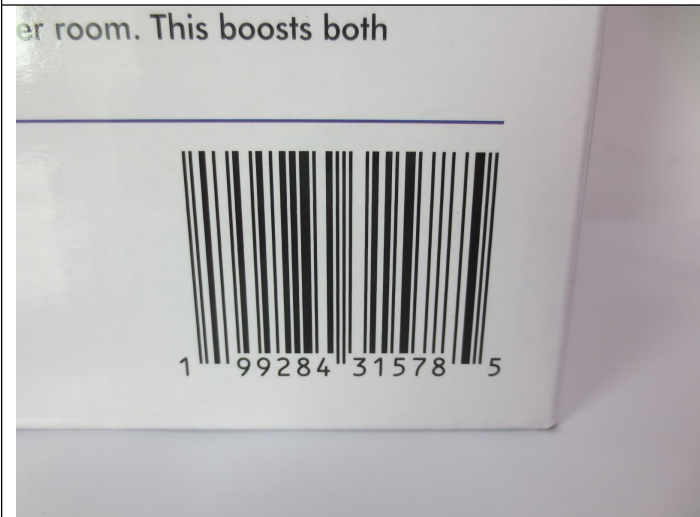
Report No.: MT-20260427-001



Gift box view



Gift box view



Gift box view



Gift box view



Gift box view



Gift box view



MT-INSPECTION

Final Random Inspection Report

Report No.: MT-20260427-001



Gift box view



Gift box view



Gift box view



Gift box view



Gift box packaging view



Gift box packaging view



MT-INSPECTION

Final Random Inspection Report

Report No.: MT-20260427-001



Gift box packaging view



Gift box packaging view



Product View



Product View



Product View



Product View



MT-INSPECTION

Final Random Inspection Report

Report No.: MT-20260427-001



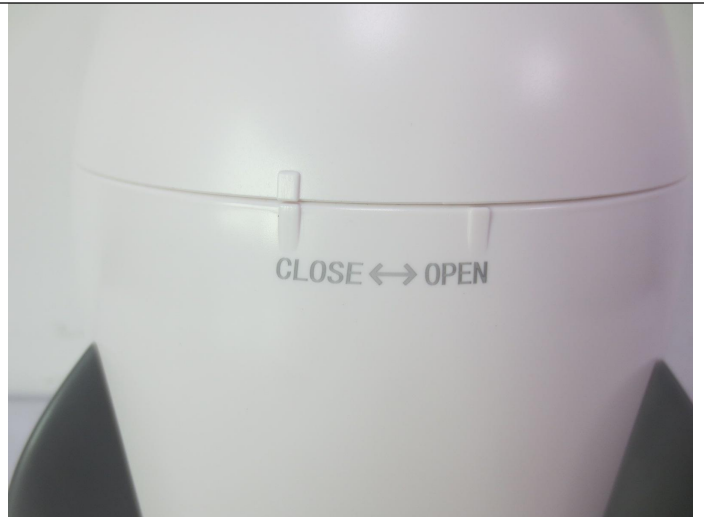
Product View



Product View



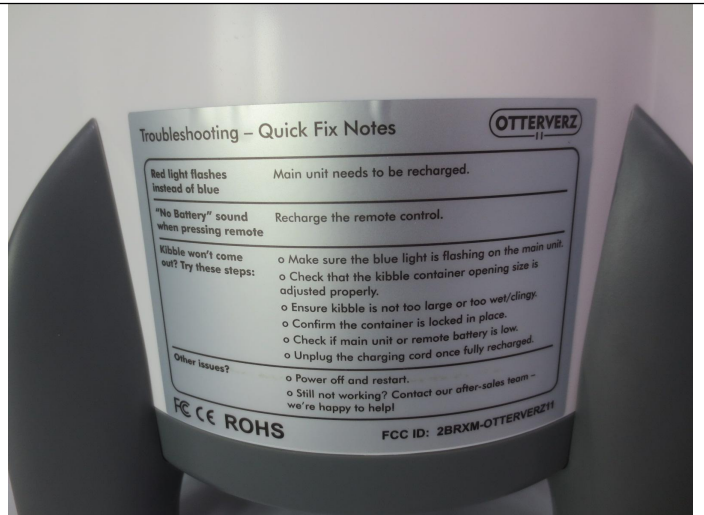
Product detail view



Product detail view



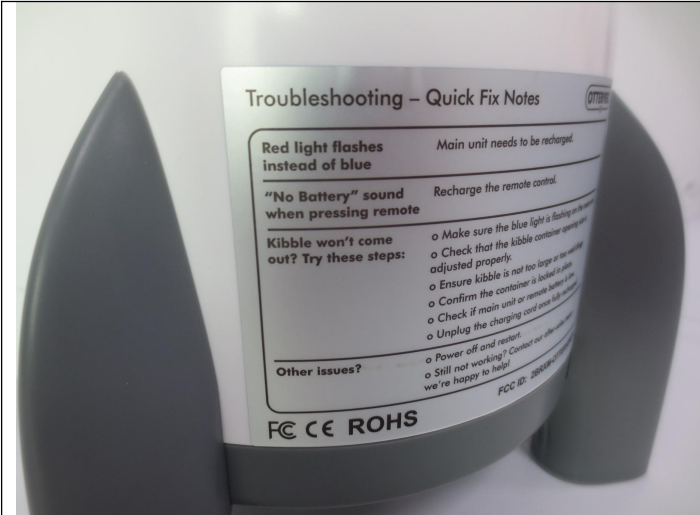
Product detail view



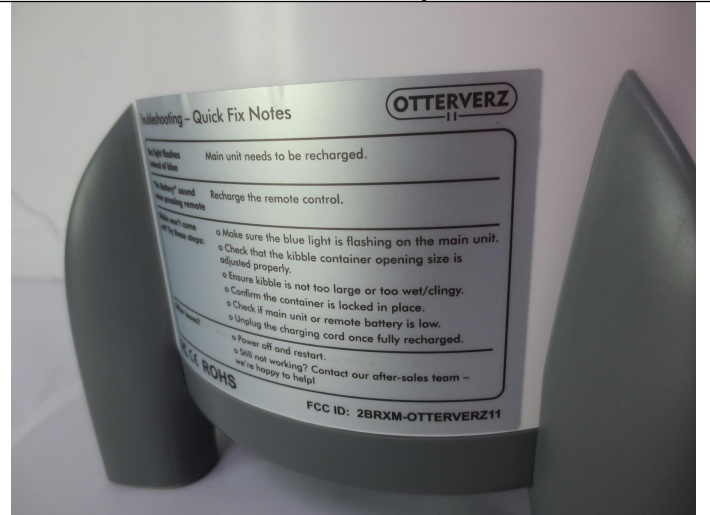
Product detail view



Final Random Inspection Report



Product detail view



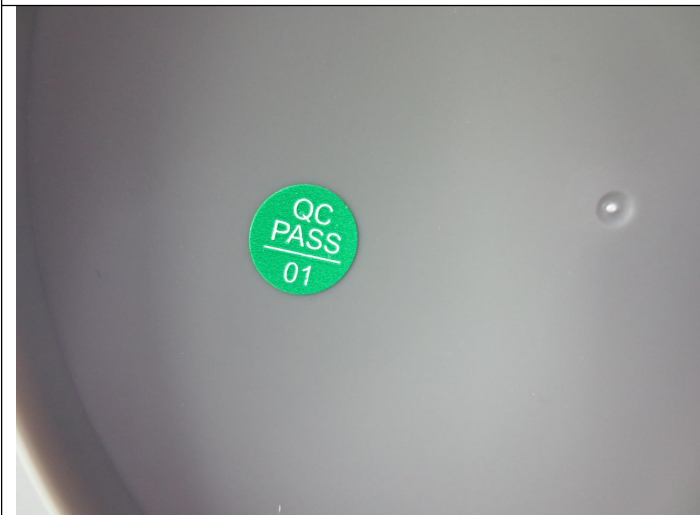
Product detail view



Product detail view



Product detail view



Product detail view



Product detail view



Final Random Inspection Report



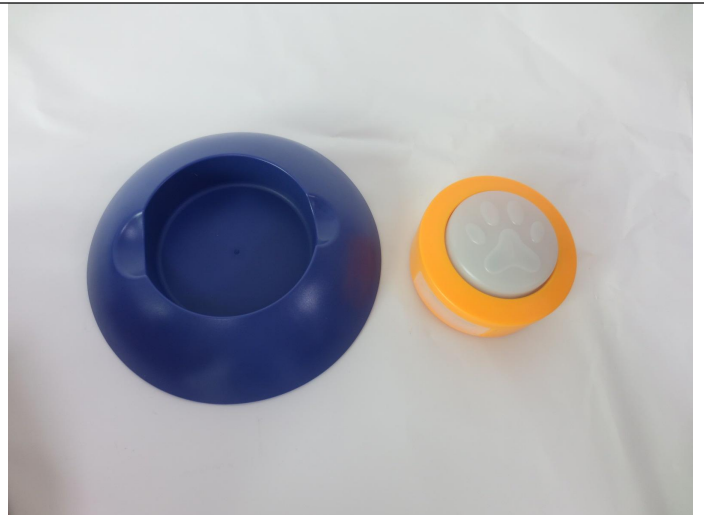
Product detail view



Product accessory view



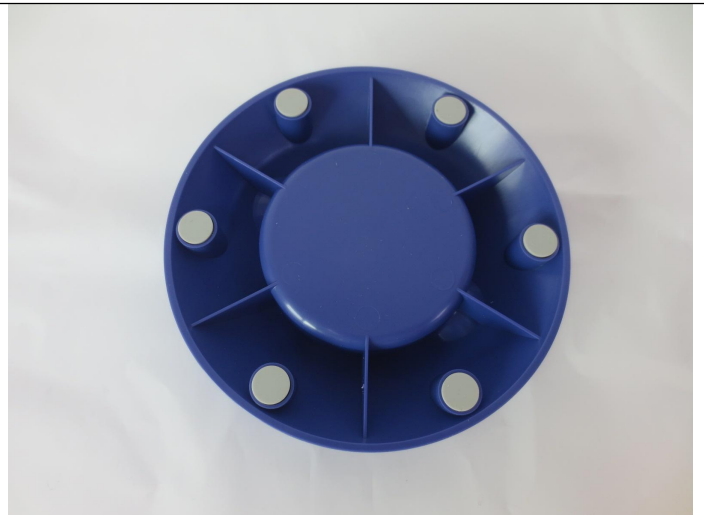
Product accessory view



Product accessory view



Product accessory view



Product accessory view



Product accessory view



Product accessory view



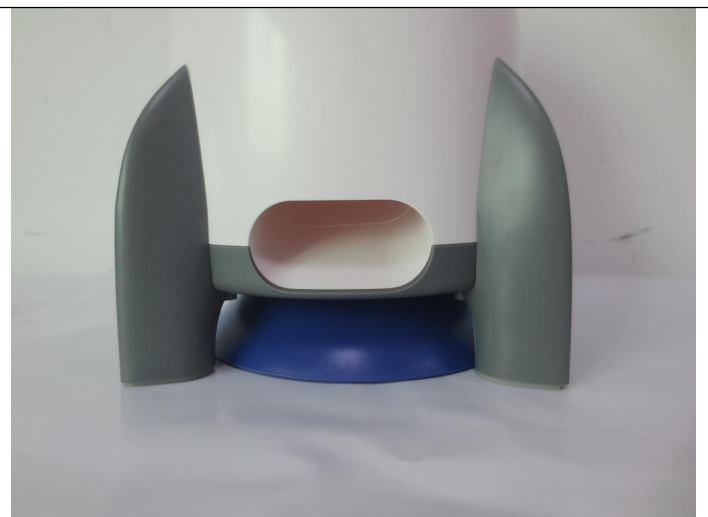
Product accessory view



Product accessory view



Product accessory view



Product accessory view



Product accessory view



Product accessory view



Product accessory view



Product accessory view



Product accessory view



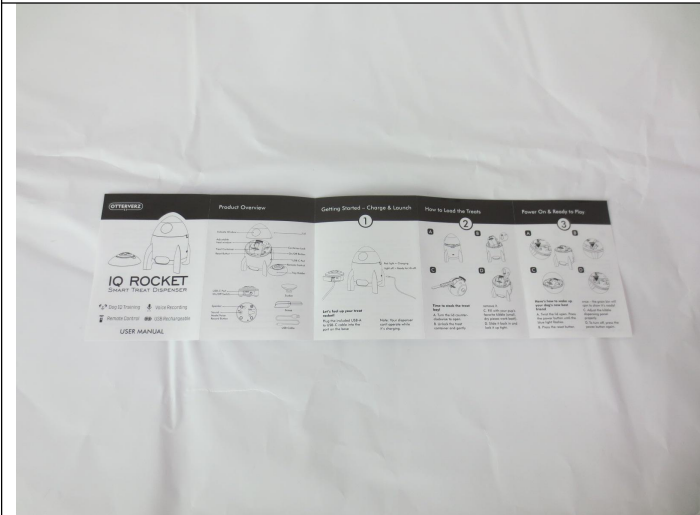
Product accessory view



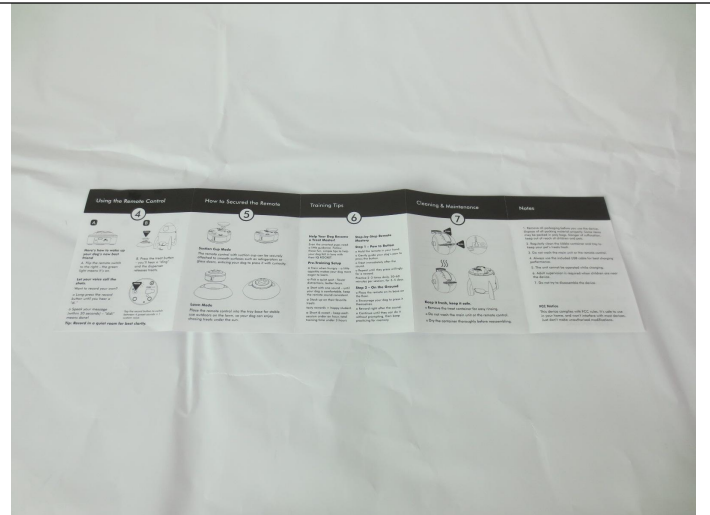
Product accessory view



Product accessory view



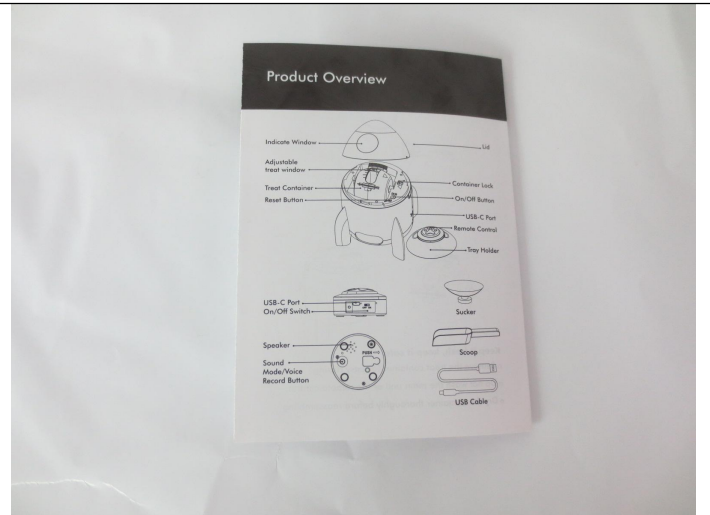
User Manual View



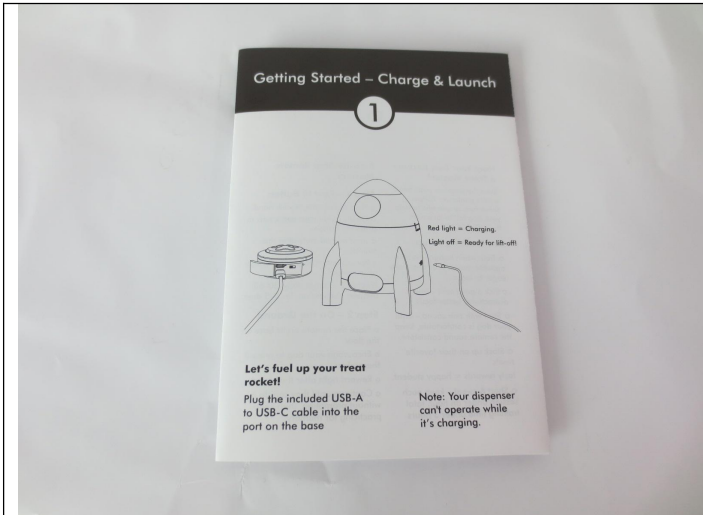
User Manual View



User Manual View



User Manual View



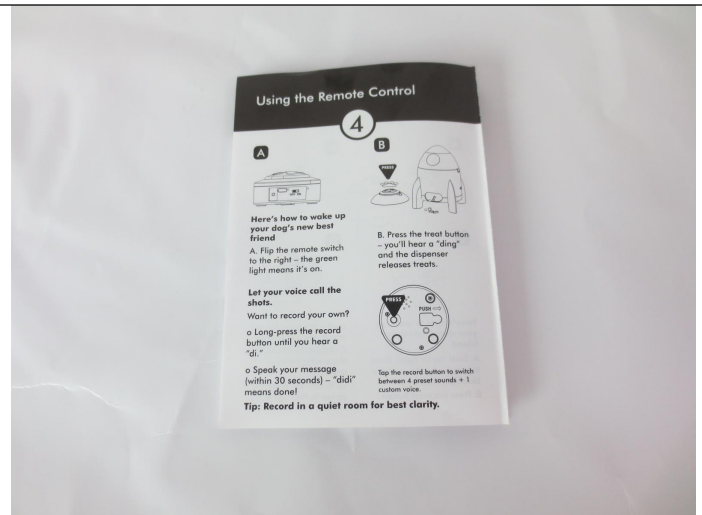
User Manual View



User Manual View



User Manual View



User Manual View



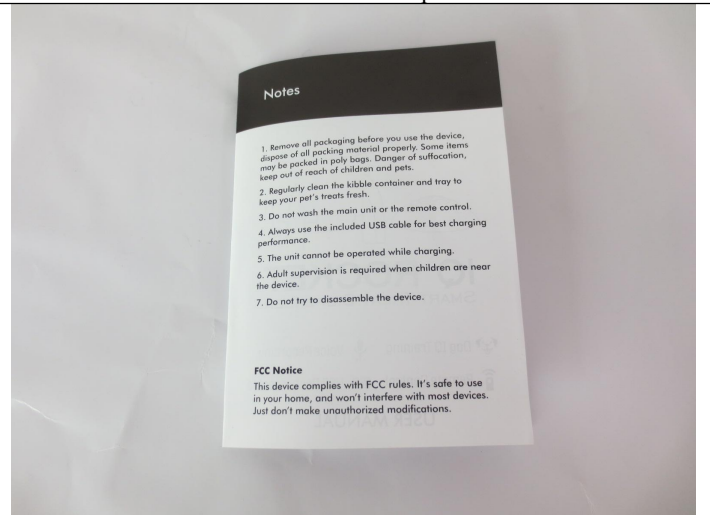
User Manual View



User Manual View



User Manual View



User Manual View



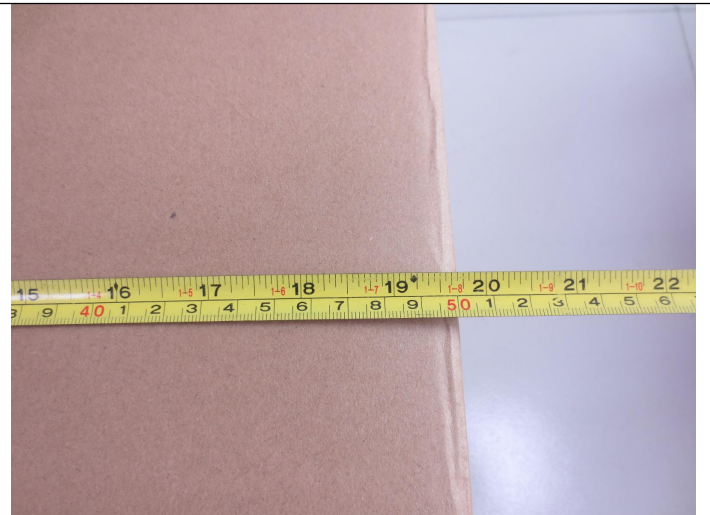
Carton size view



Carton size view



Carton size view



Carton size view



Final Random Inspection Report



Carton size view



Carton size view



Carton Interval View



Carton Interval View



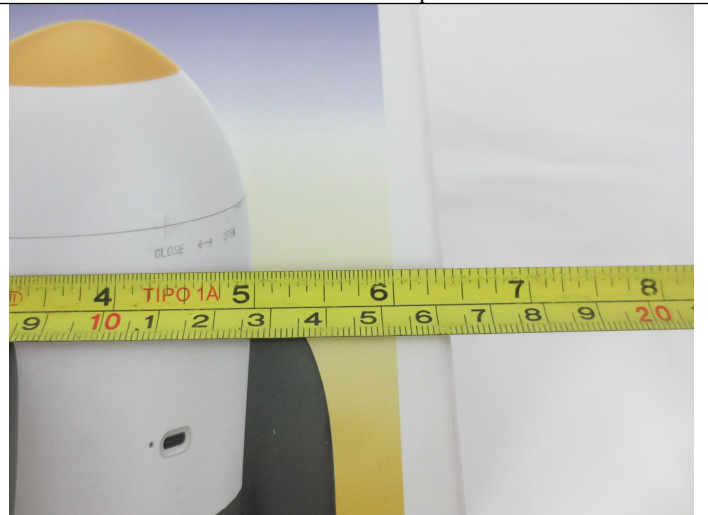
Gift box size view



Gift box size view



Gift box size view



Gift box size view



Gift box size view



Gift box size view



Product View



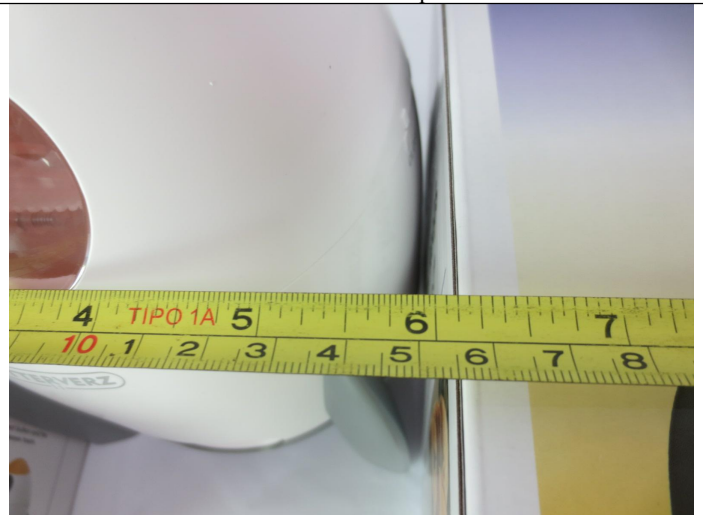
Product View



Final Random Inspection Report



Product View



Product View



Product View



Product View



Bubble bag size view



Bubble bag size view



MT-INSPECTION

Final Random Inspection Report

Report No.: MT-20260427-001



Bubble bag size view



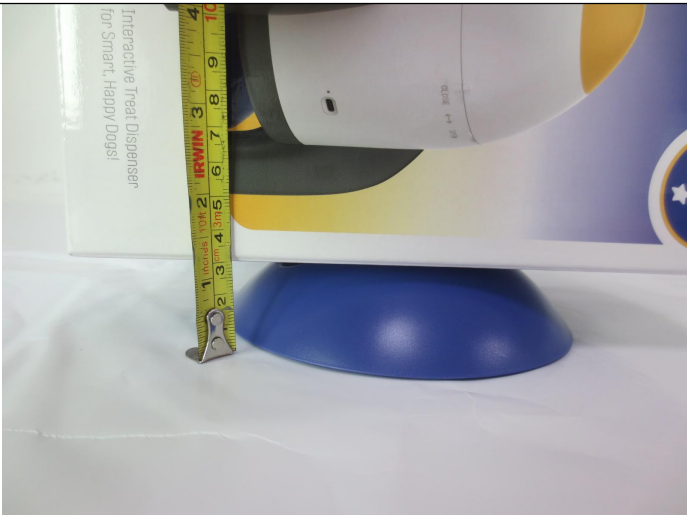
Bubble bag size view



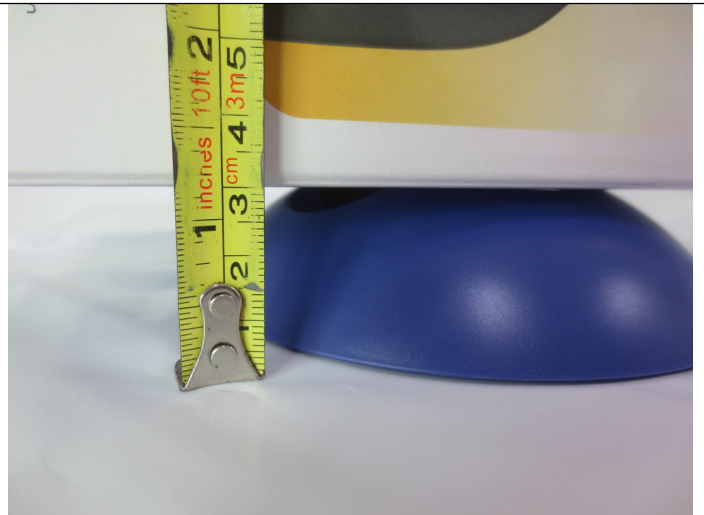
Base size view



Base size view



Base size view



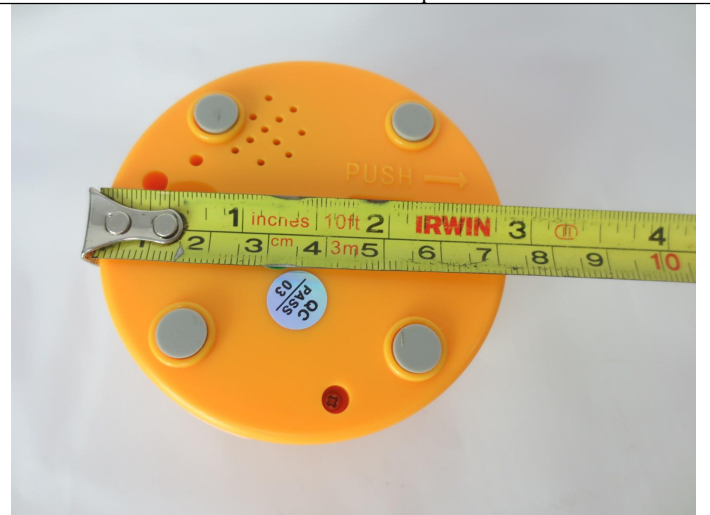
Base size view



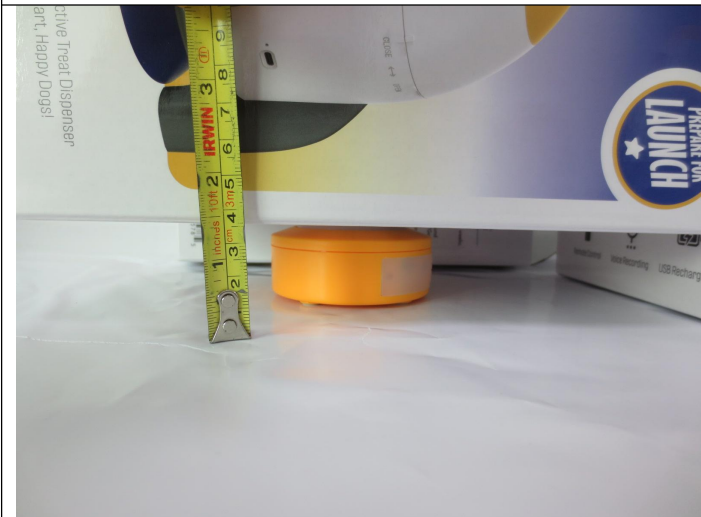
Final Random Inspection Report



Bell size view



Bell size view



Bell size view



Bell size view



Spoon size view



Spoon size view



Final Random Inspection Report



Spoon size view



Spoon size view



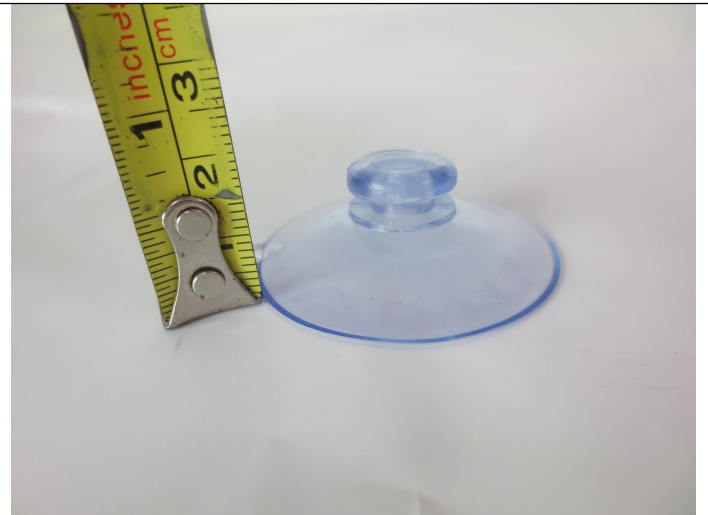
Spoon size view



Spoon size view



Suction cup size view



Suction cup size view



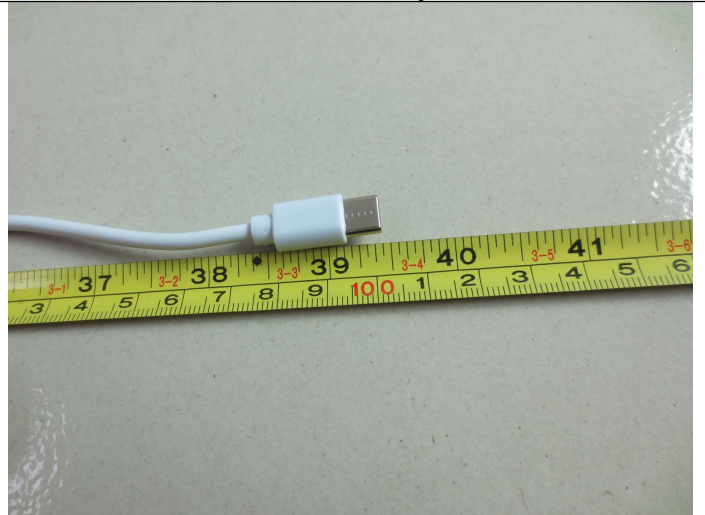
MT-INSPECTION

Final Random Inspection Report

Report No.: MT-20260427-001



USB cable size view



USB cable size view



Transparent bag size view



Transparent bag size view



User manual size view



User manual size view



Carton weight view



Carton weight view



Gift box weight view



Gift box weight view



Gift box weight view



Gift box weight view



Final Random Inspection Report



Gift box weight view



1 set of weight views



Product weight view



1 set of weight views



Product weight view



Base and bell weight view



Final Random Inspection Report



Base weight view



Bell weight view



Spoon weight view



Suction cup weight view



USB cable weight view



User Manual Weight View

Item:OT2001(CA)



MT-INSPECTION

Final Random Inspection Report

Report No.: MT-20260427-001



Carton View



Carton View



Carton View



Carton View



Carton View



Carton View



MT-INSPECTION

Final Random Inspection Report

Report No.: MT-20260427-001



Carton View



Carton View



Carton View



Carton View

Internal structure inspection



Internal Construction View



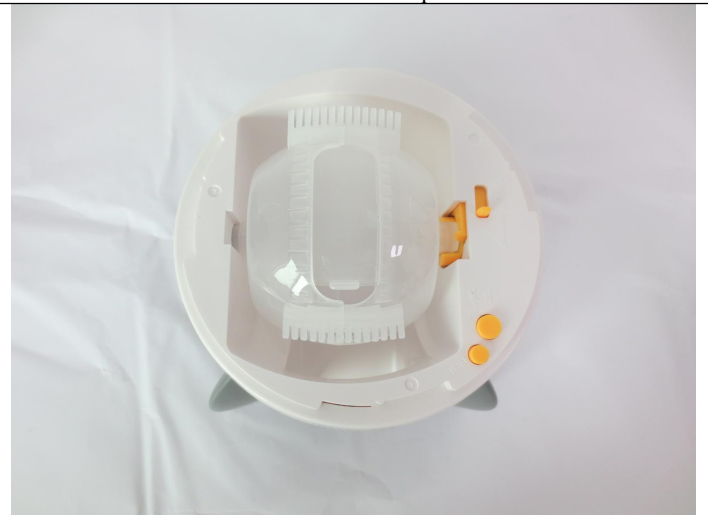
Internal Construction View



Final Random Inspection Report



Internal Construction View



Internal Construction View



Internal Construction View



Internal Construction View



Internal Construction View



Internal Construction View



Final Random Inspection Report



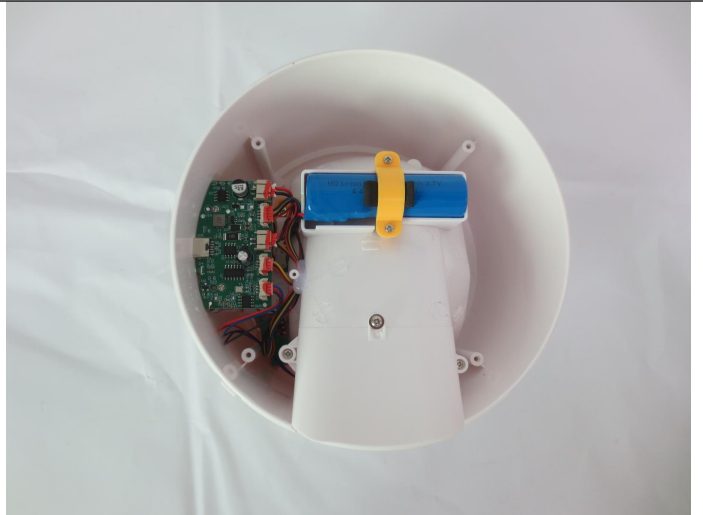
Internal Construction View



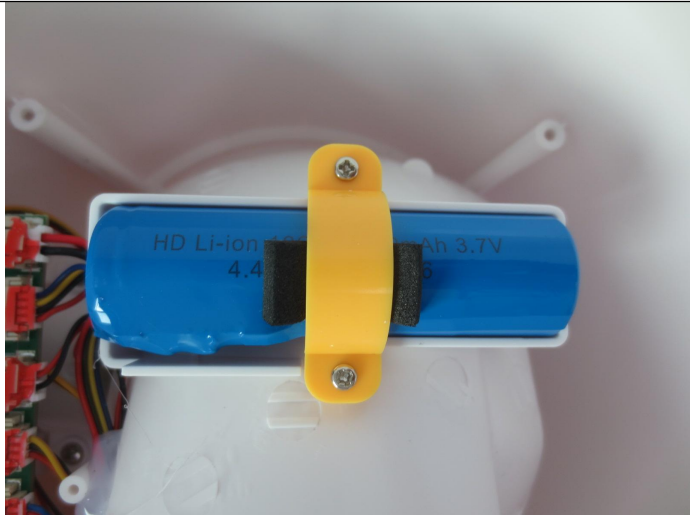
Internal Construction View



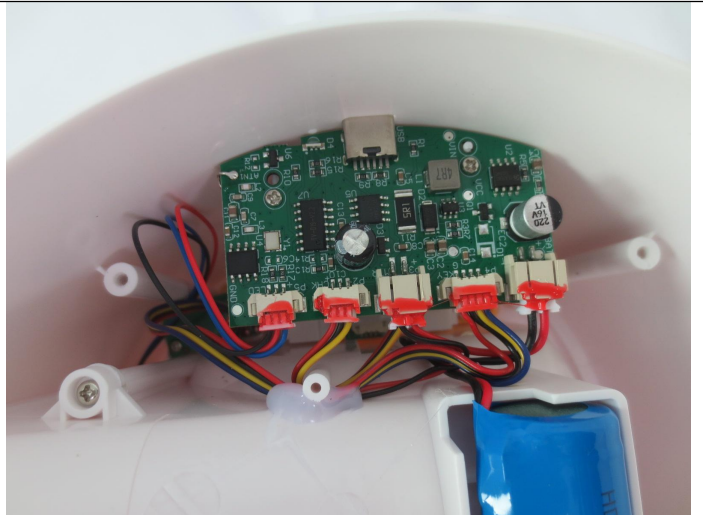
Internal Construction View



Internal Construction View



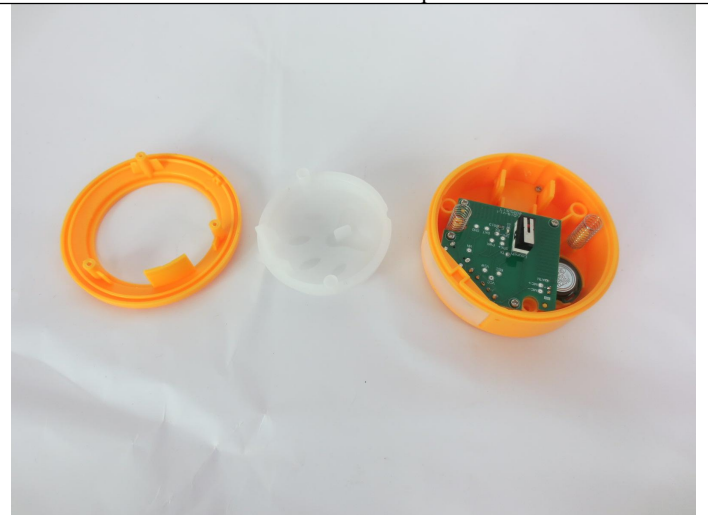
Internal Construction View



Internal Construction View



Internal Construction View



Internal Construction View



Internal Construction View



Internal Construction View



Internal Construction View



Internal Construction View



Final Random Inspection Report



Internal Construction View



Internal Construction View



Internal Construction View



Internal Construction View



Internal Construction View



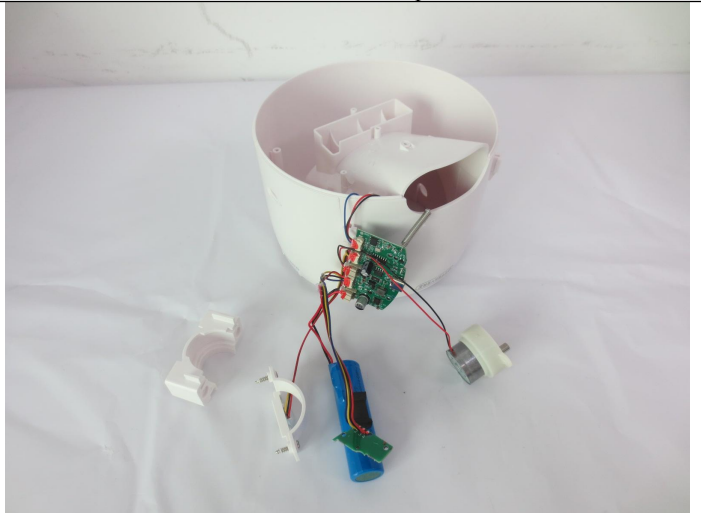
Internal Construction View



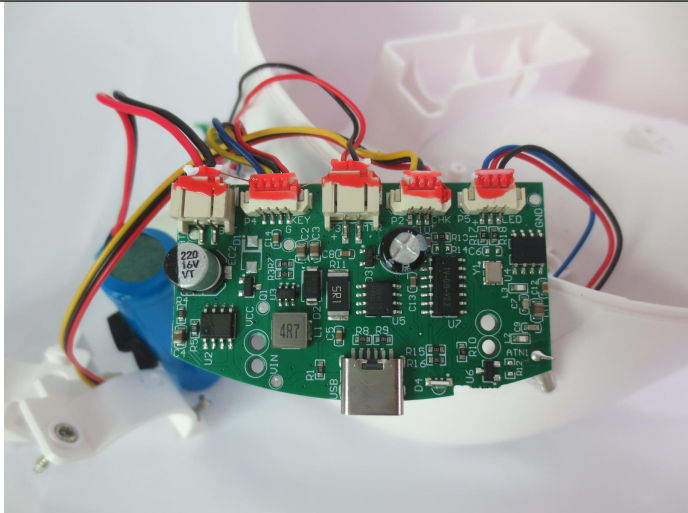
Final Random Inspection Report



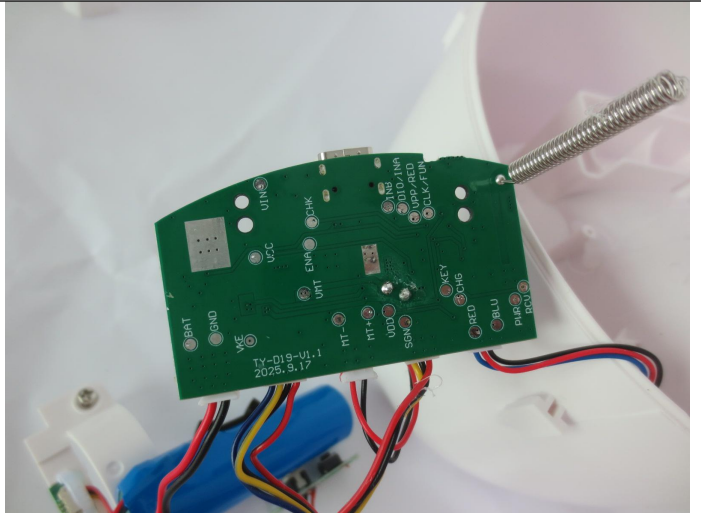
Internal Construction View



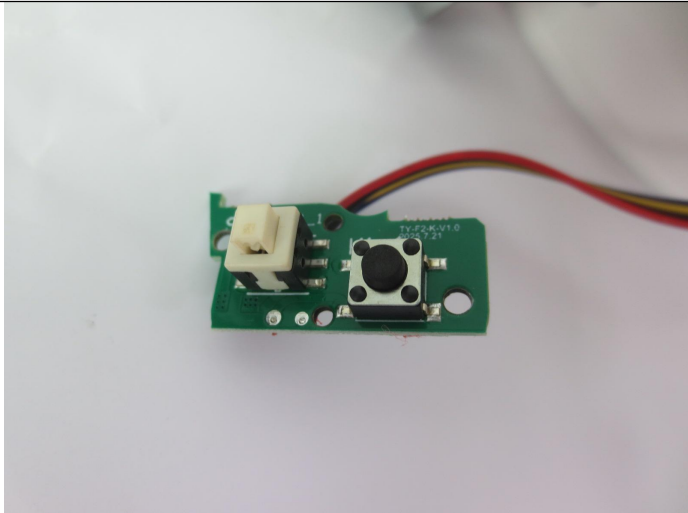
Internal Construction View



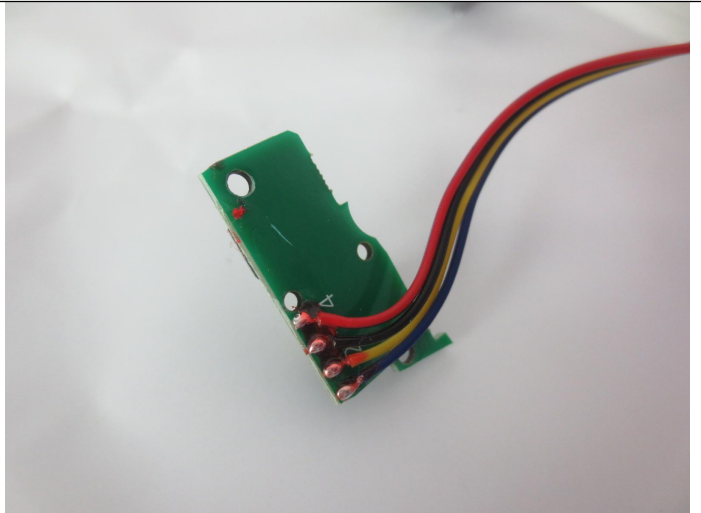
Internal Construction View



Internal Construction View



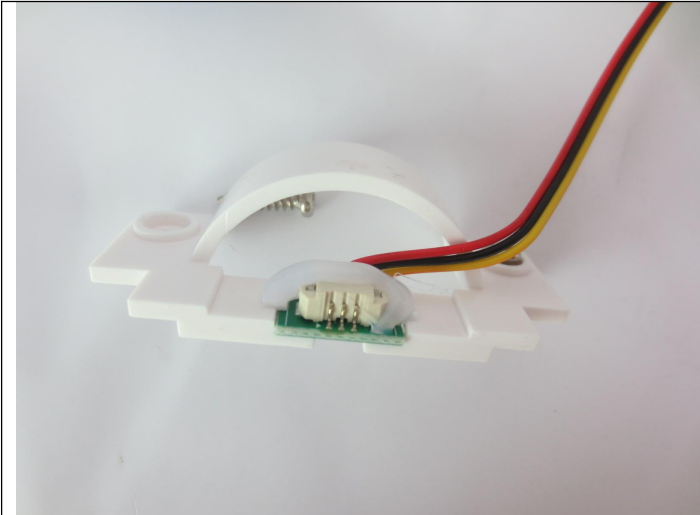
Internal Construction View



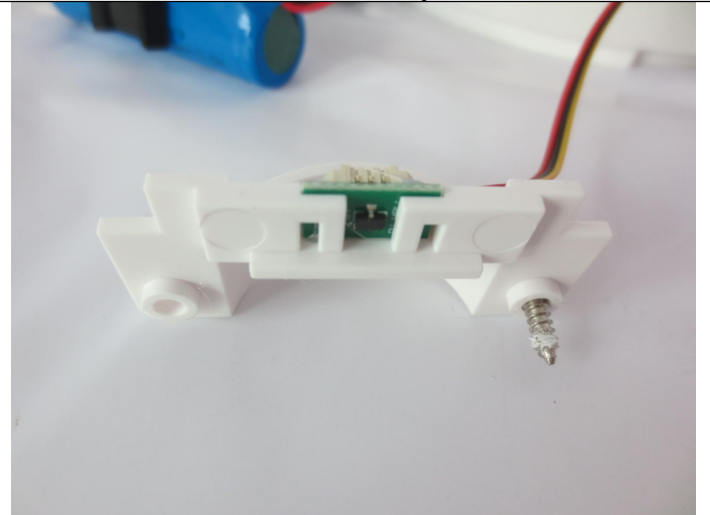
Internal Construction View



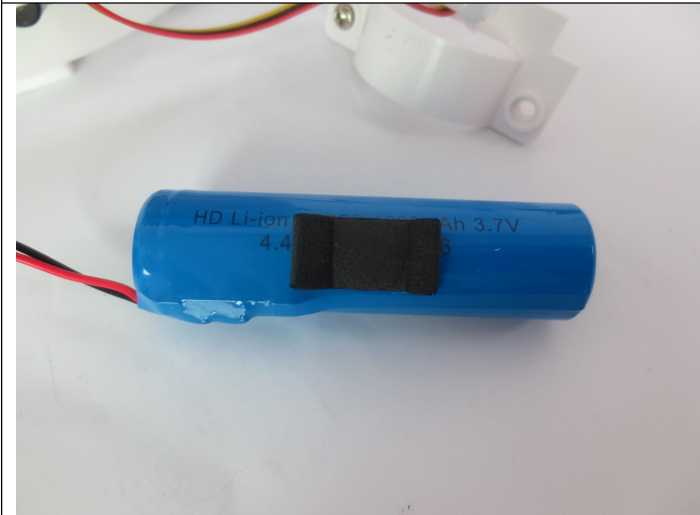
Final Random Inspection Report



Internal Construction View



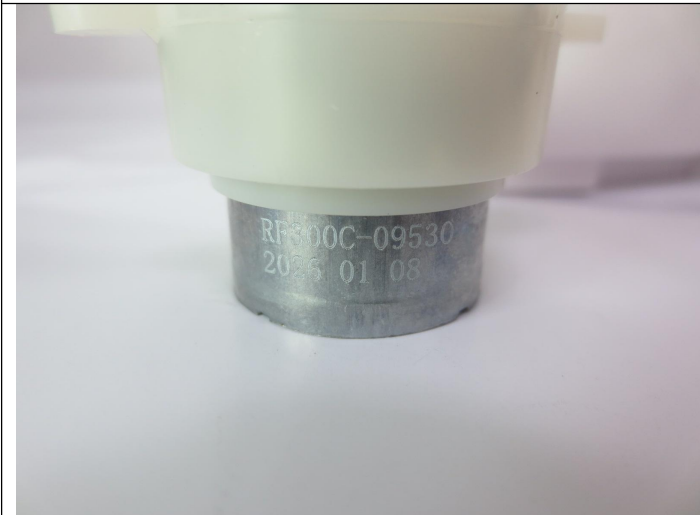
Internal Construction View



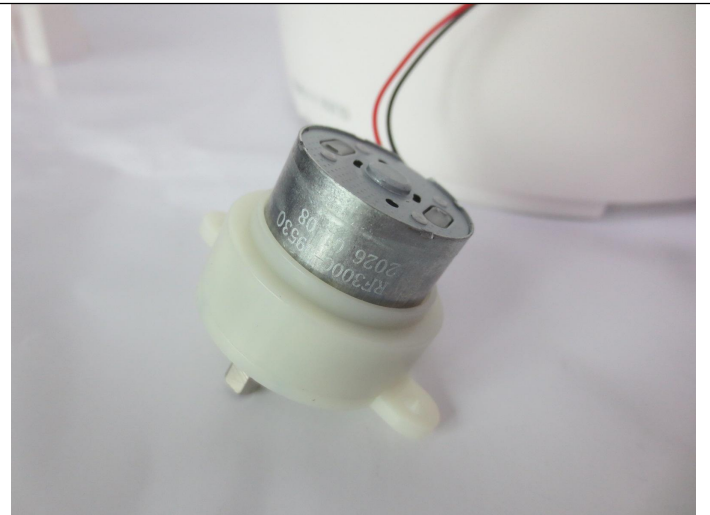
Internal Construction View



Internal Construction View



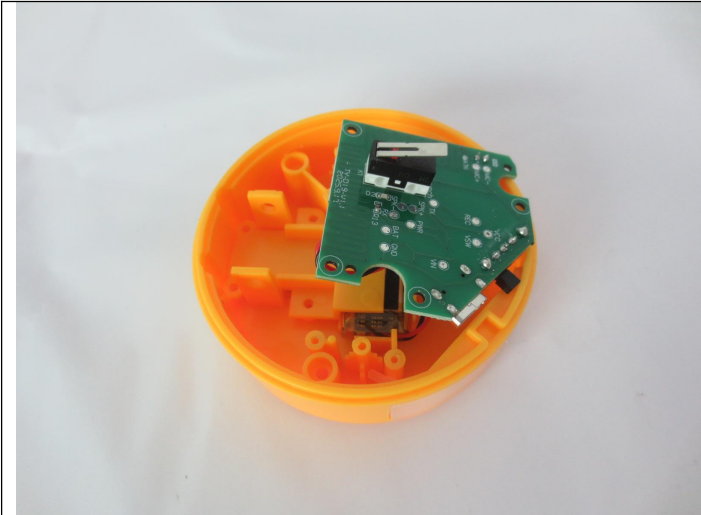
Internal Construction View



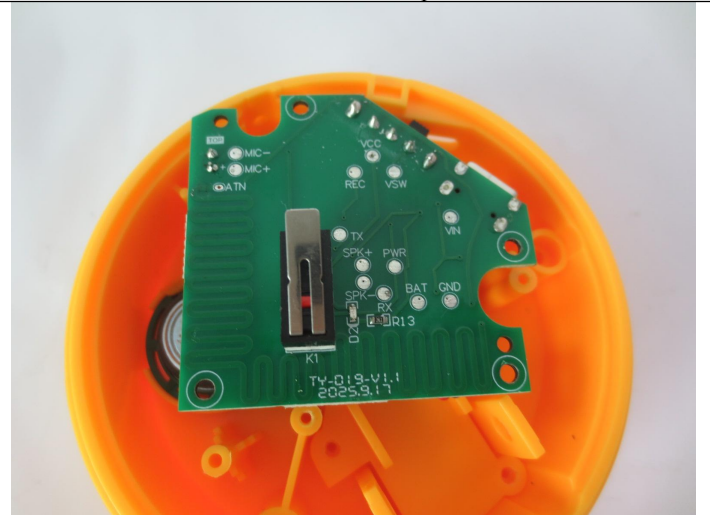
Internal Construction View



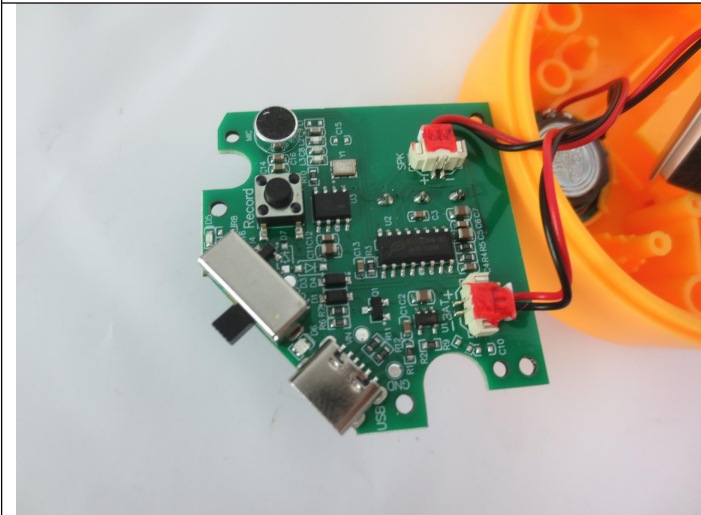
Final Random Inspection Report



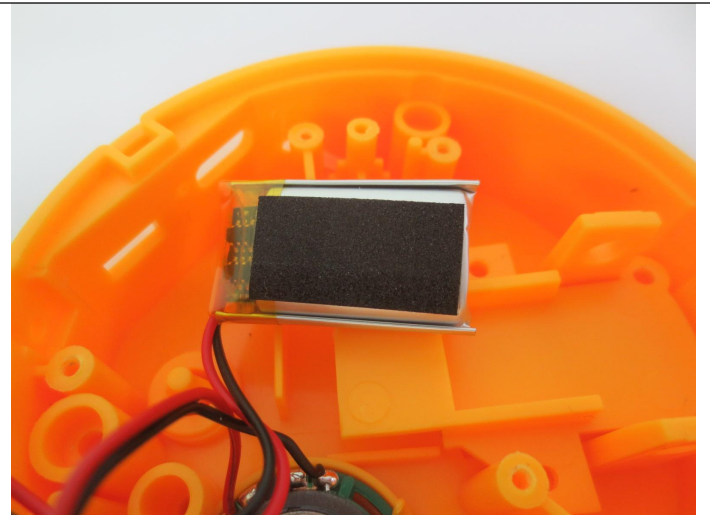
Internal Construction View



Internal Construction View



Internal Construction View



Internal Construction View



Internal Construction View



Internal Construction View

Measurement and Test

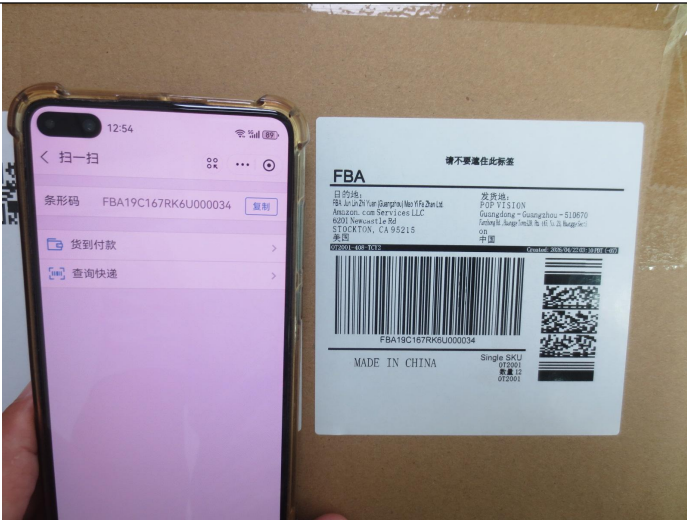


MT-INSPECTION

Final Random Inspection Report

Report No.: MT-20260427-001

Item:OT2001



Barcode Test View



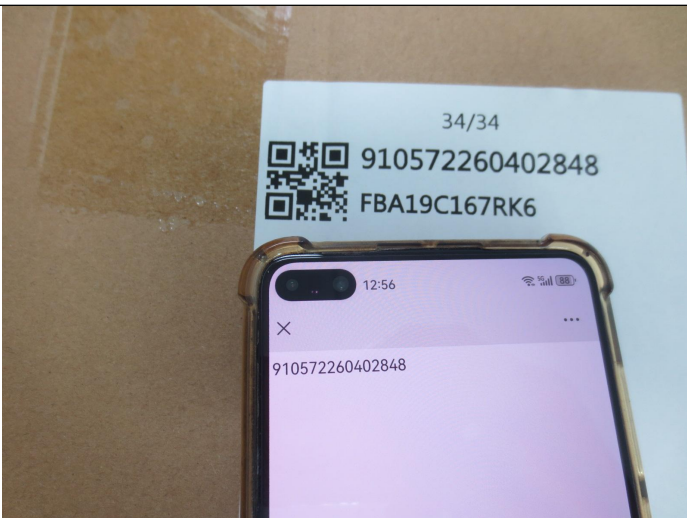
Barcode Test View



QR code test view



QR code test view



QR code test view



Barcode Test View



MT-INSPECTION

Final Random Inspection Report

Report No.: MT-20260427-001



Barcode Test View



Barcode Test View



3M Test View



3M Test View



3M Test View



3M Test View



Final Random Inspection Report



3M Test View



3M Test View



Rub Test View



Rub Test View



Rub Test View



Rub Test View



Final Random Inspection Report



Rub Test View



Rub Test View



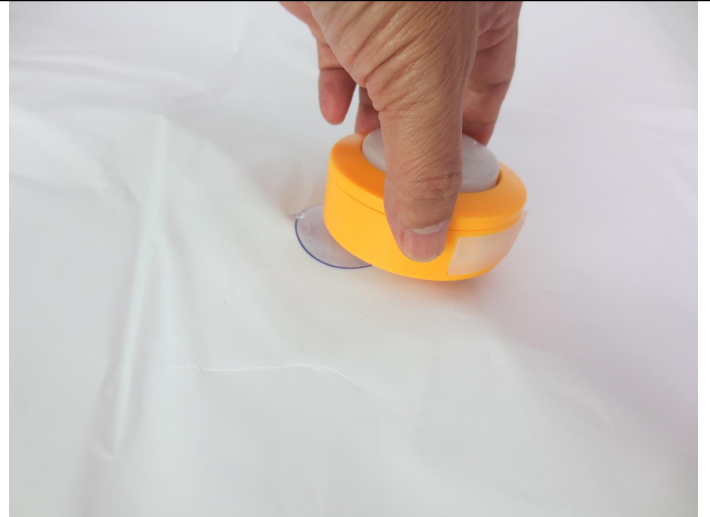
Install Test View



Install Test View



Install Test View



Install Test View



Final Random Inspection Report



Functional Test View



Functional Test View



Functional Test View



Functional Test View



Functional Test View



Functional Test View



Final Random Inspection Report



Functional Test View



Functional Test View



Functional Test View



Charging Test View



Color Comparison View



Color Comparison View



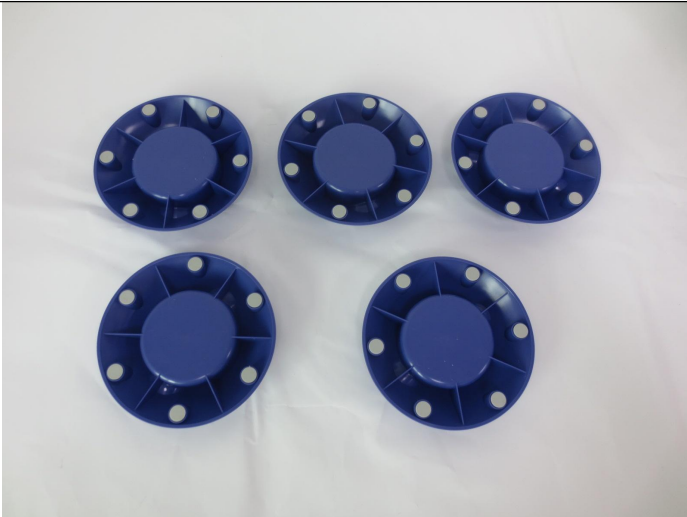
Final Random Inspection Report



Color Comparison View



Color Comparison View



Color Comparison View



Color Comparison View



Color Comparison View



Color Comparison View



Final Random Inspection Report



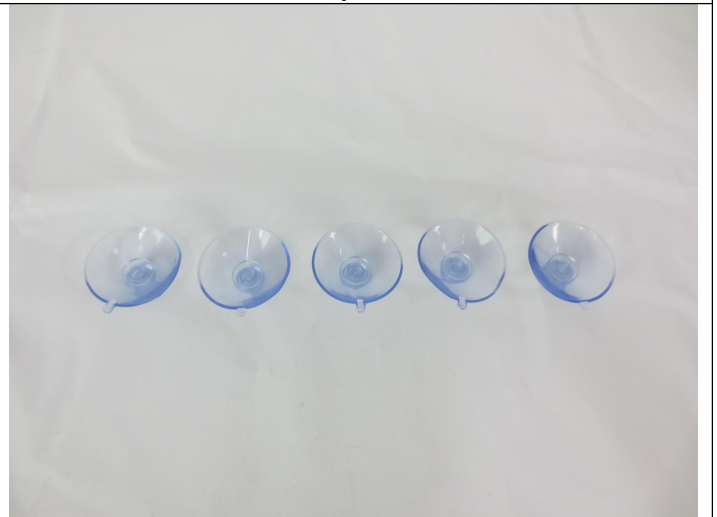
Color Comparison View



Color Comparison View



Color Comparison View



Color Comparison View



Power on Aging View



Power on Aging View



Final Random Inspection Report



Power on Aging View



Power on Aging View



Power on Aging View



Power on Aging View



Product Drop Test View



Product Drop Test View



Final Random Inspection Report



Smell Test View



Smell Test View



Smell Test View



Smell Test View



Voltage and current test view



Voltage and current test view



Final Random Inspection Report



Voltage and current test view



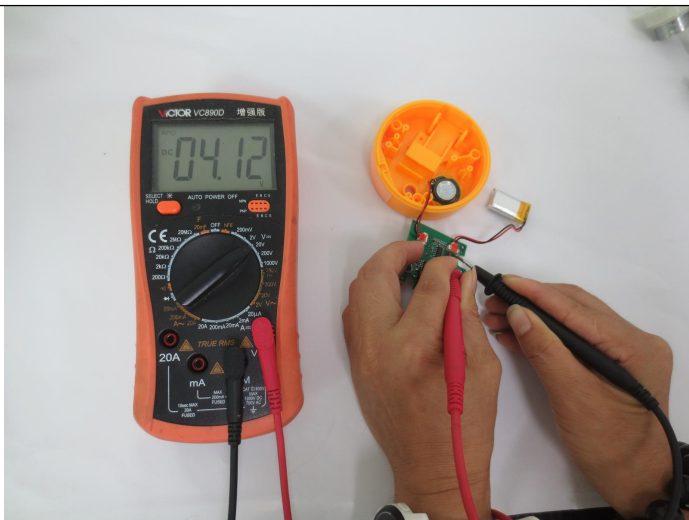
Voltage and current test view



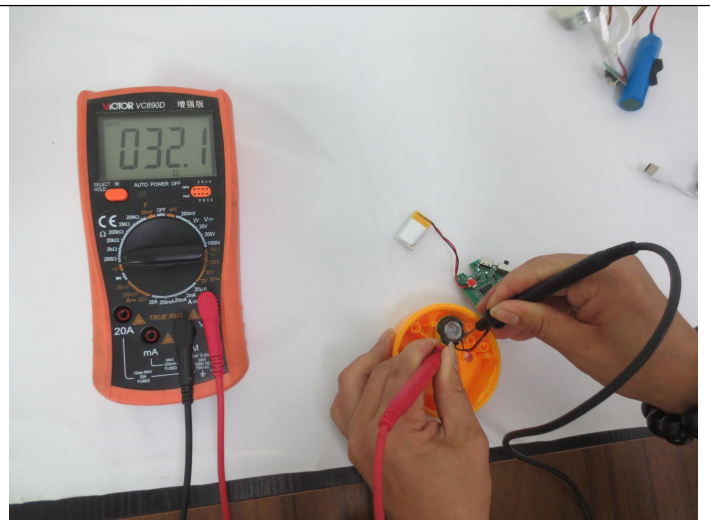
Functional Test View



Functional Test View



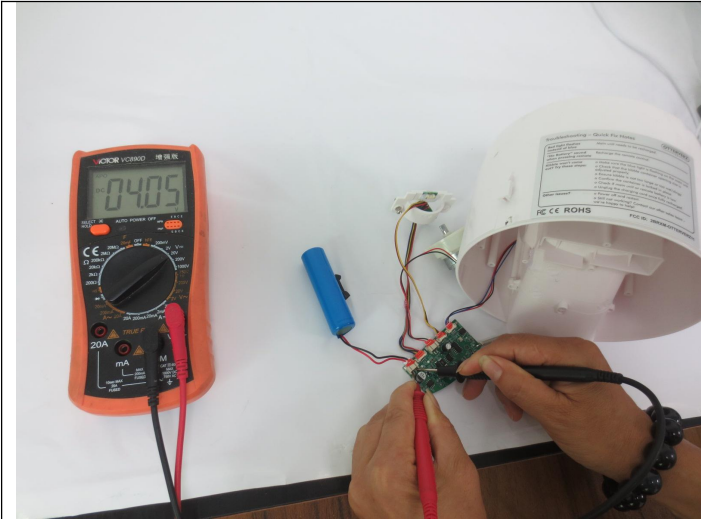
Voltage Test View



Impedance Test View



Final Random Inspection Report



Battery Voltage Test View



Practical Dog Food Testing View



Practical Dog Food Testing View



Practical Dog Food Testing View



20m remote testing view



20m remote testing view

Item No.:OT2001(CA)



MT-INSPECTION

Final Random Inspection Report

Report No.: MT-20260427-001



QR code test view



Barcode Test View

Other photos



Factory building view



Factory building view



Factory building view



Factory building view



MT-INSPECTION

Final Random Inspection Report

Report No.: MT-20260427-001



Factory building view



Factory building view



On site inspection view



On site inspection view



On site inspection view



On site inspection view



Final Random Inspection Report



Large cargo stacking view



Large cargo stacking view



Large cargo stacking view



Large cargo stacking view

--The End Of Report--