



MT-INSPECTION

Final Random Inspection Report

Report No.: MT-20260420-002

GENERAL SUMMARY:

Client:	N/A
PO No.:	N/A
Item No.:	W1
Product Name:	Pivot door
Quantity:	1set
Inspection location:	Foshan City, Guangdong Province
Supplier:	Foshan Feiman Trading Co., LTD
Date of inspection:	April 20 th ,2026



OVERALL CONCLUSION:

Inspection criteria	Passed	Failed	Pending	Comments
Quantity available:	-	-	×	Remark 1
Product Conformity:	-	-	×	Remark 2
Workmanship:	-	×	-	Remark 3
Test and measurement:	-	-	×	Remark 4,5
Labeling:	-	-	×	Remark 1
Packing and shipping mark:	-	-	×	Remark 1
Result:	<input type="checkbox"/> Acceptable <input checked="" type="checkbox"/> Reject <input type="checkbox"/> Pending			

SPECIAL REMARK:

- 1.Upon the arrival,only assembled, didn't packed.
- 2.No approval sample was provided for inspection reference, so the inspector could not judge on aesthetic, material of product.
- 3.Found 3 appearance defects in 1 set, the defects will be reworked before shipped.
- 4.No device was provided by factory for checking the Weight of product and Power measurement and Hi-Pot test.
- 5.Factory did not allow us to do adaptor Internal check.

AVAILABLE QUANTITY:

Order No.	Item No.	Order Qty		Packed		Not finished		Not packed		Inspect Qty	
		pcs	ctn	pcs	ctn	pcs	ctn	pcs	ctn	pcs	ctn
N/A	W1	1	-	0	0	0	0	1	-	1	-
Total:		1	-	0	0	0	0	1	-	1	-

Inspection standard: <i>ANSI/ASQC Z1.4-2003</i> Sampling plan: <i>Single, Normal</i> Inspection level: 100% AQL: Critical: Not Allowed.	Sample Size: 1set			
		Critical	Major	Minor
	AQL:	0	2.5	4.0
	Defects Found:	0	3	0
	Max. Allowed:	0	0	0



MT-INSPECTION

Final Random Inspection Report

Report No.: MT-20260420-002

WORKMANSHIP:

Item No.	Sample size	Defective rate	Defects Description	Cri	Maj	Min
W1	1set	100%	Deform unit	0	1	0
			Scratch mark on unit	0	2	0
Total defect:				0	3	0
Allowed:				0	0	0
Result:				Fail		

Defect Pictures:

Item No.:W1



Deform unit-Major



Scratch mark on unit-Major



Scratch mark on unit-Major

N/A



Final Random Inspection Report

PRODUCT CONFORMITY & ON-SITE TESTS

Check Points & On-site Tests	Sample Size	Criteria	Result & Remarks
Visual Check (Style, Appearance, Material, Color)	1pc	a. Conformance to Style / Appearance / Material / Color compared against: <input type="checkbox"/> Client's / <input type="checkbox"/> Factory's ref. sample. <input checked="" type="checkbox"/> No ref. sample for comparison. (N.B.: Provide details in comment section if 2 or more color shades and/or any color variation is found.) b. Free of nick, burrs, pits, sharp point or any other defects which may affect the product serviceability. c. Finish/ coating is smooth and even without streaks, blisters, wrinkles, or runs. d. Good overall appearance with good alignment of components.	FAIL Refer to AQL
Color check	1pc	No color discrepancy	PASS
Function check	1pc	All captioned function is well conducted as intended. Such as installation/adjusting, actual using function etc. All of function should be complied with claims.	PASS
Assembly testing	1pc	So the product should be able to be assembled smoothly	PASS
Internal Check	1pc	Conduct internal inspection of the product (check CDF for electrical products)	PENDING Refer to remark 6

PACKING AND ACCESSORIES:

Item No.:	Master shipper (pcs/ctn)	Carton size L×W×H (cm)	G.W (Kg)	N.W (Kg)
W1	-	-	-	-

PRODUCT SPECIFICATION:

Item No.:	Check point	Client Spec.	Actual finding
W1	Product size check	3048x3657.6x120mm	3040x3650x120.8mm
	Product weight check	-	-

EXPORT CARTON INFORMATION:

Carton:	New export carton	-	Sealing:	Opaque gummed tape	-
Fastening:	Metal staples	-		Transparent gummed tape	-
Strapping:	Nylonx2	-		Paper tape	-
Material:	Ply of corrugated paper	-	Others:	-	



Product photo show: Item:W1



Product detail view



Product detail view



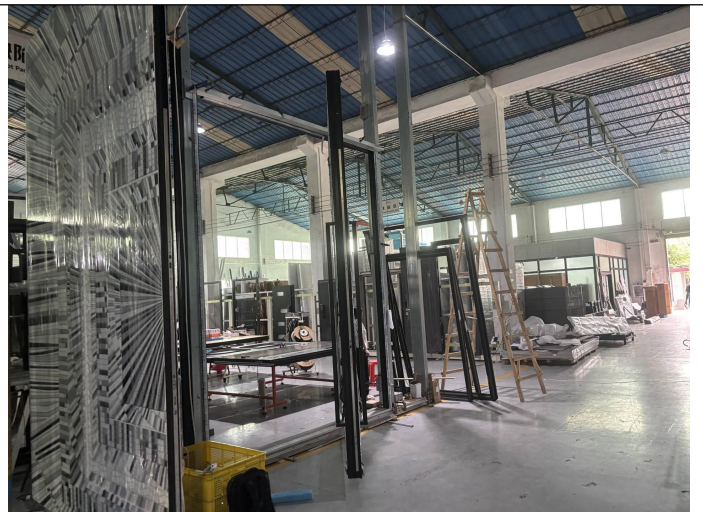
Product detail view



Product detail view



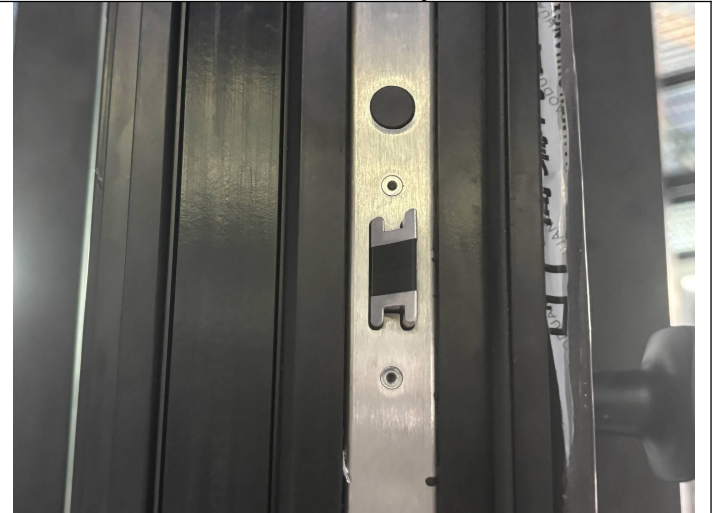
Product detail view



Product detail view



Product detail view



Product detail view



Product detail view



Product detail view



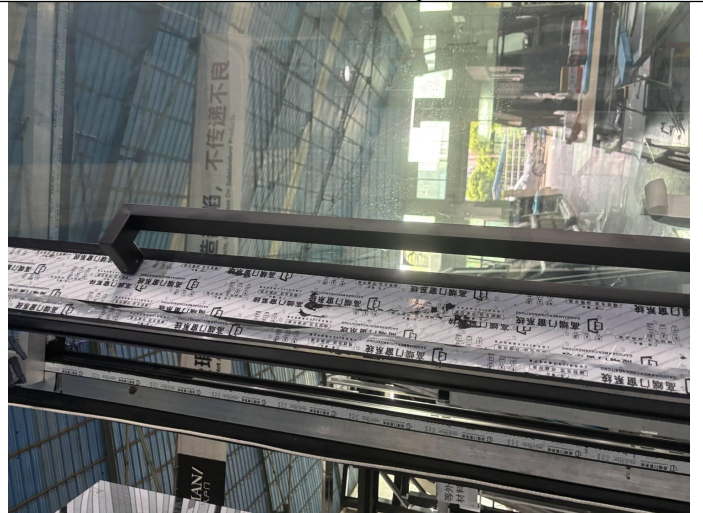
Product detail view



Product detail view



Product detail view



Product detail view



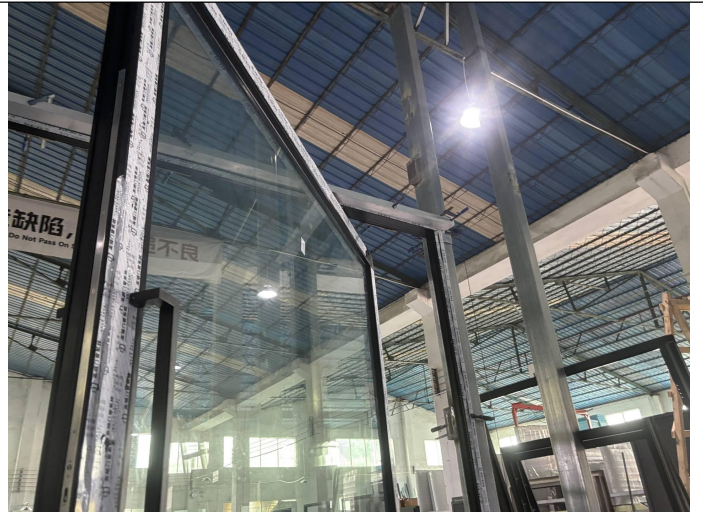
Product detail view



Product detail view



Product detail view



Product detail view



MT-INSPECTION

Final Random Inspection Report

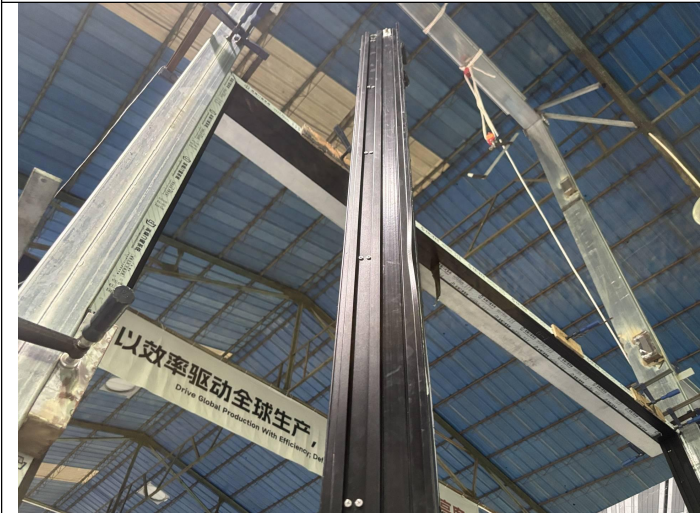
Report No.: MT-20260420-002



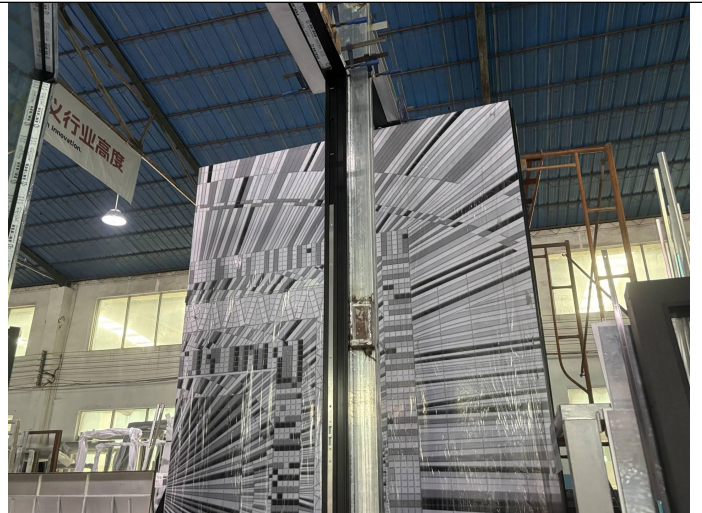
Product detail view



Product detail view



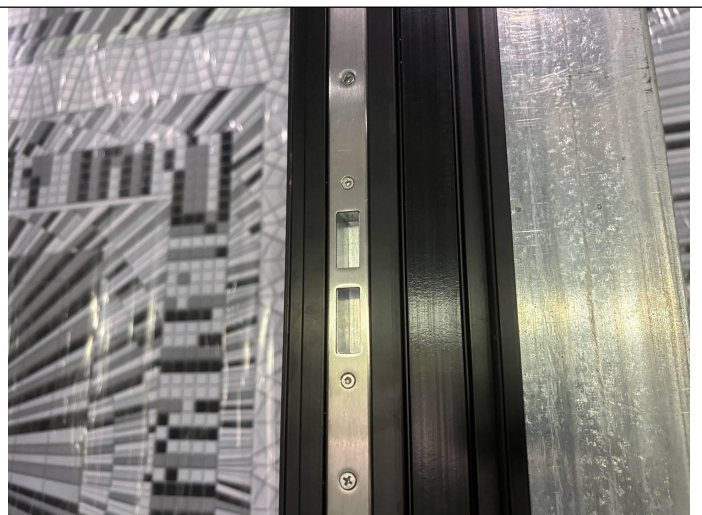
Product detail view



Product detail view



Product detail view



Product detail view



MT-INSPECTION

Final Random Inspection Report

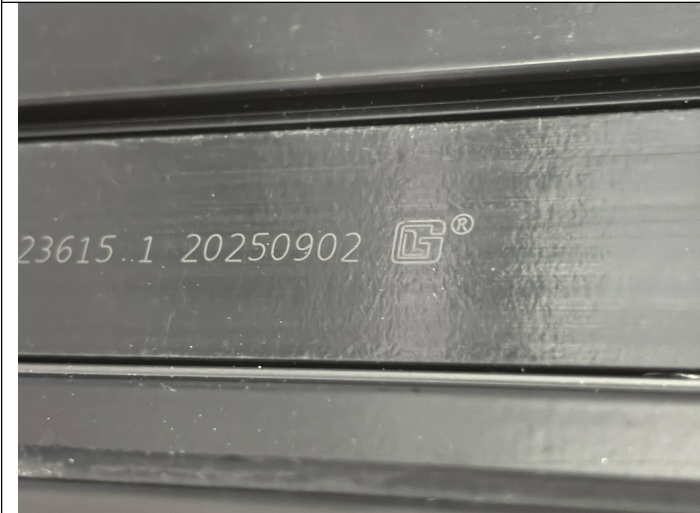
Report No.: MT-20260420-002



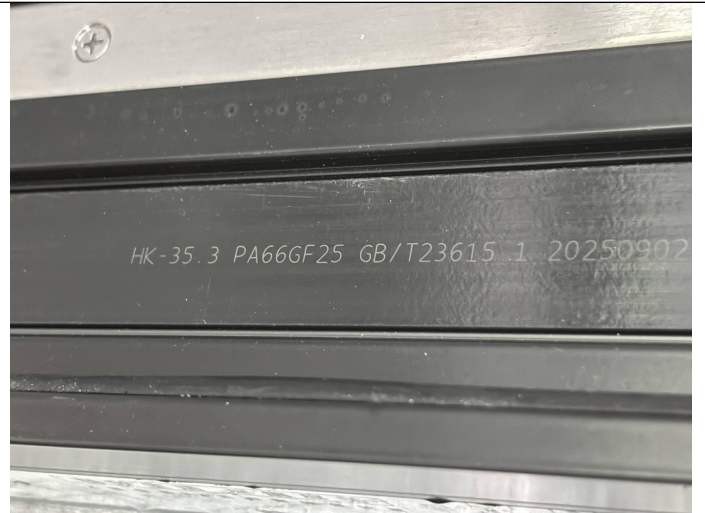
Product detail view



Product detail view



Product detail view



Product detail view

Measurement and Test

Item: W1



Product size check



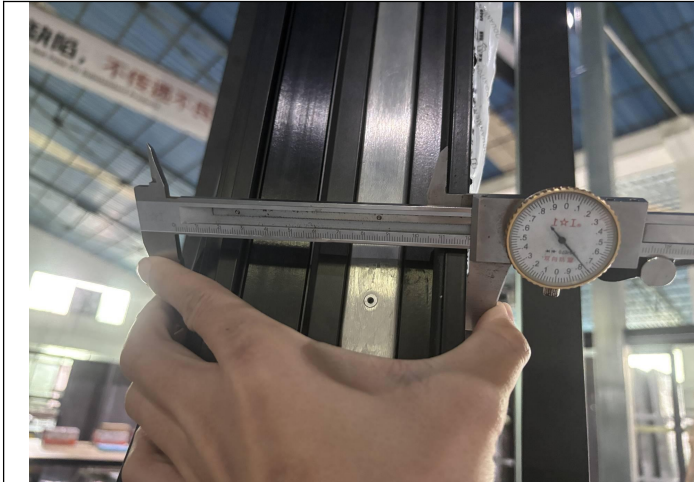
Length:3040mm



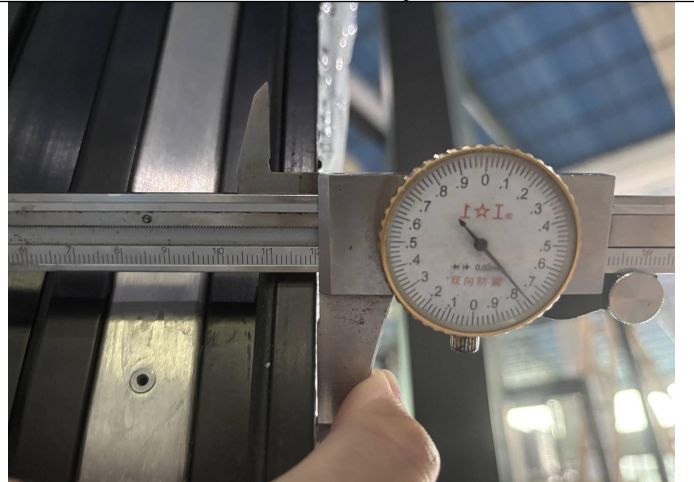
MT-INSPECTION

Final Random Inspection Report

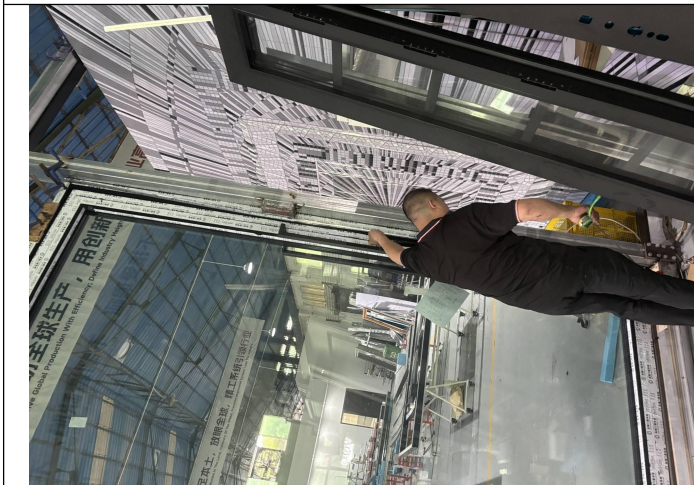
Report No.: MT-20260420-002



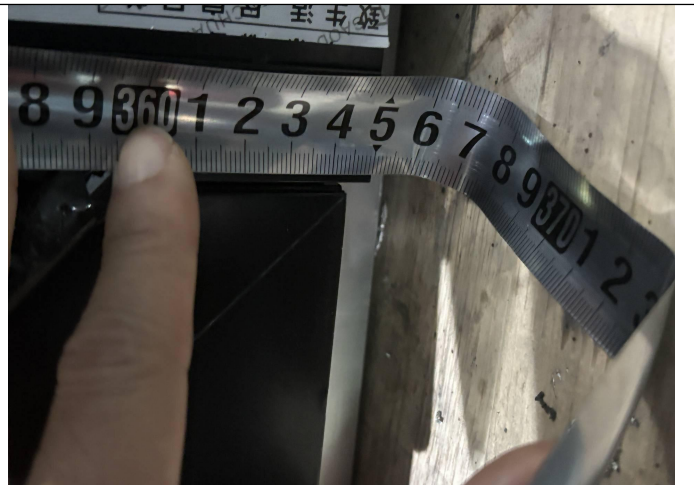
Product size check



Width:120mm



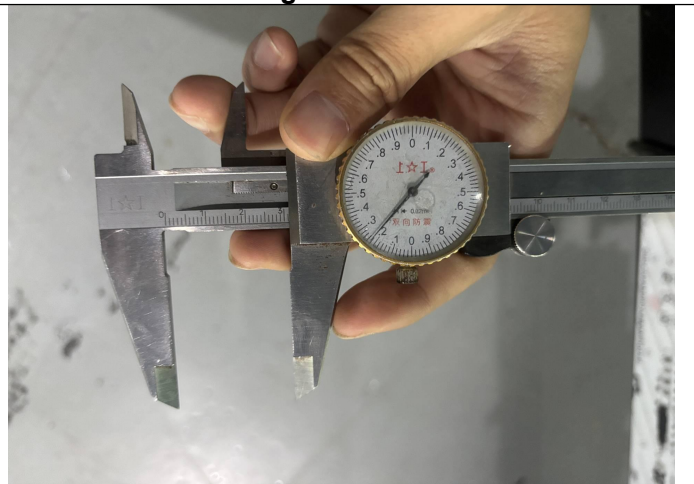
Product size check



Height:3650mm



Product size check



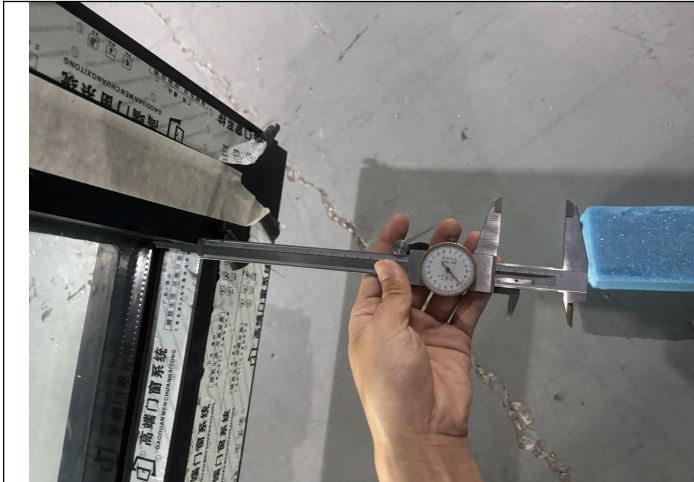
Product size check:31.2mm



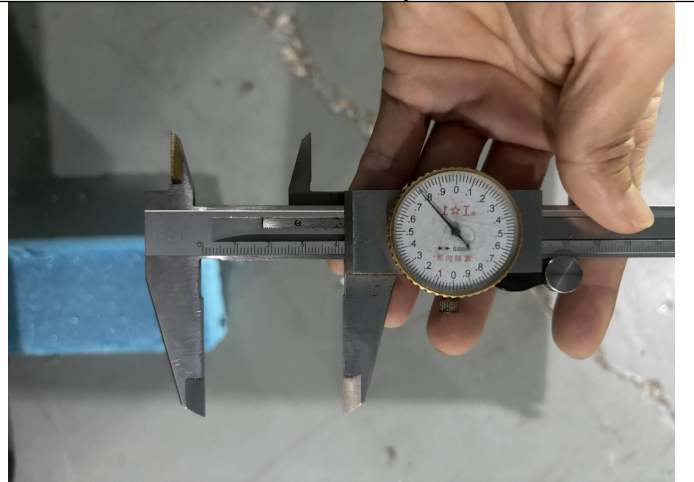
MT-INSPECTION

Final Random Inspection Report

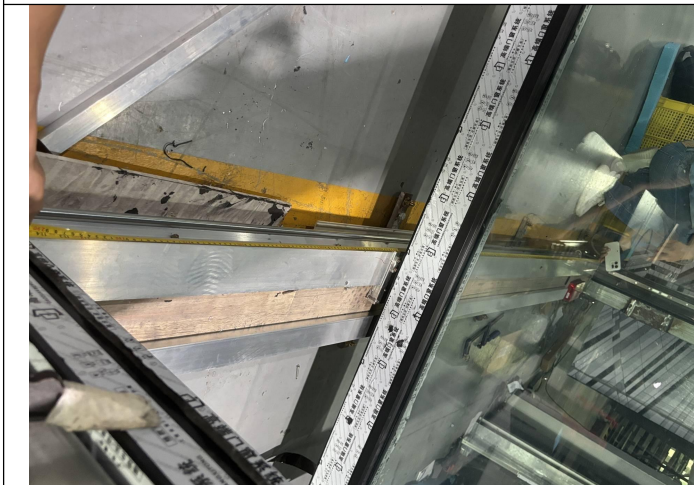
Report No.: MT-20260420-002



Product size check



Product size check:41.8mm



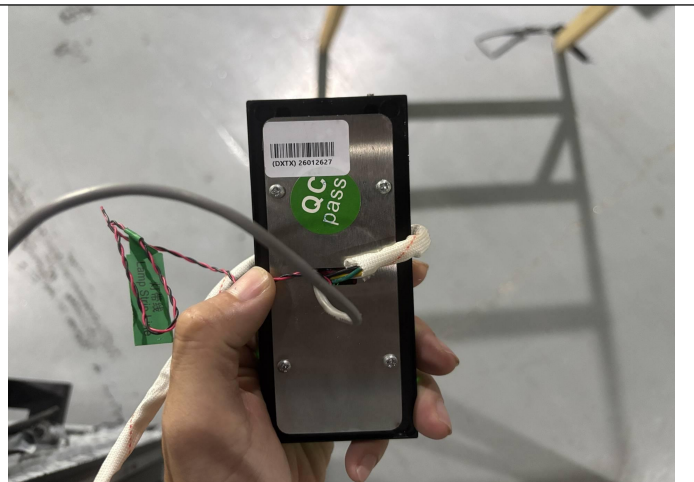
Product size check



Product size check: 2145mm



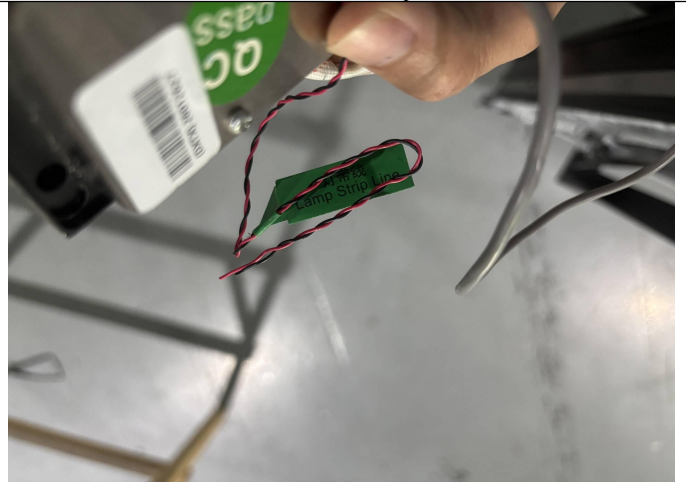
Product size check:4inch



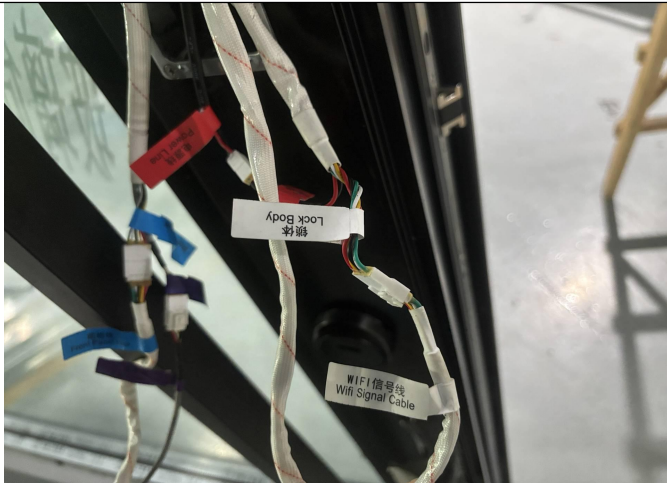
Internal check



Internal check



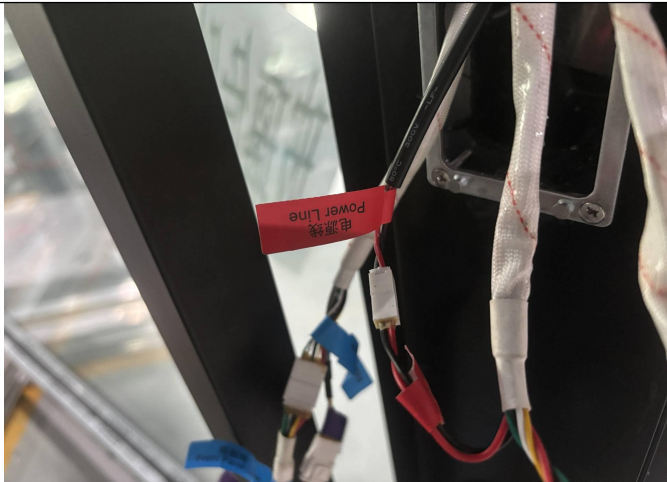
Internal check



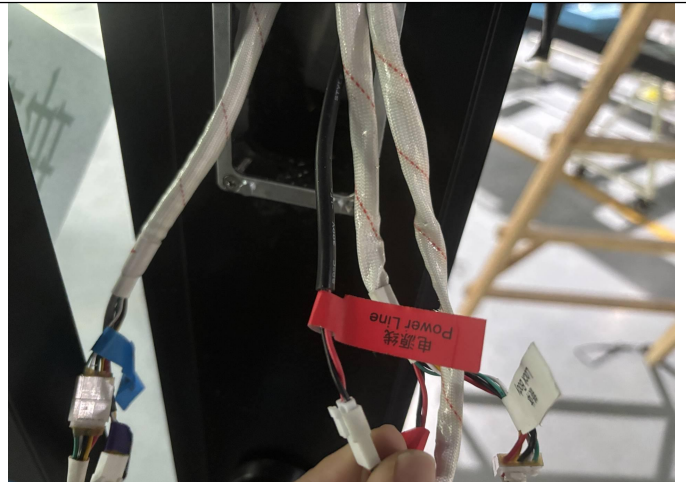
Internal check



Internal check



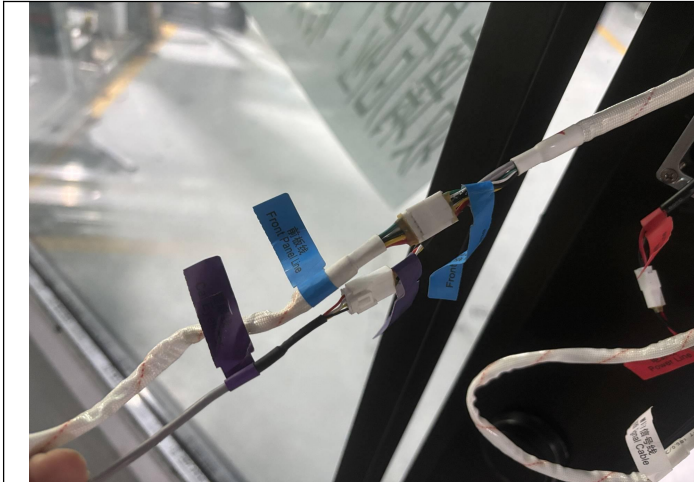
Internal check



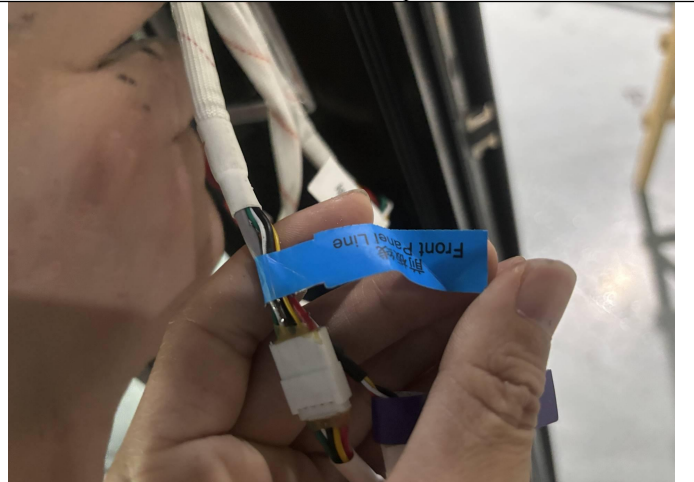
Internal check



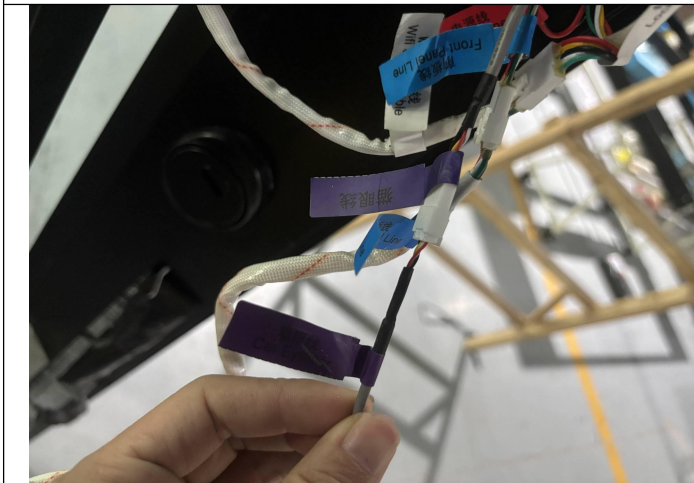
Final Random Inspection Report



Internal check



Internal check



Internal check



Internal check

Other photos



Factory gate



Inspection site

--The End Of Report--