



MT-INSPECTION

Final Random Inspection Report

Report No.: MT-20260429-005

| GENERAL SUMMARY: | |
|----------------------|---|
| Client: | / |
| PO No.: | / |
| Item No.: | 01-P00612-00B/02-961154-00B/03-534406-00B/ 04-P00362-00B/05-182028-000/06-P11743-000/ 07-P08026-000/08-467436-00B/09-138428-00B/ 10-776090-00B/11-004560-00B |
| Product Name: | Fastener |
| Quantity: | 473158pcs |
| Inspection location: | Jiaxing Zhejiang China |
| Supplier: | Jiangxingshenglong |
| Date of inspection: | 2026-4-29 |



| OVERALL CONCLUSION: | | | | |
|----------------------------|--|--------|--|--|
| Inspection criteria | Passed | Failed | Pending | Comments |
| Quantity available: | - | - | √ | Remark 1 |
| Product Conformity: | - | - | √ | Remark 6 |
| Workmanship: | - | - | √ | Remark 2 |
| Test and measurement: | - | - | √ | Remark 5 |
| Labeling: | - | - | √ | Remark 3 |
| Packing and shipping mark: | - | - | √ | Remark 4 |
| Result: | <input type="checkbox"/> Acceptable | | <input type="checkbox"/> Reject | <input checked="" type="checkbox"/> Pending |

| SPECIAL REMARK: |
|--|
| 1.The factory products are stacked chaotically, making it impossible to count the exact quantity. The product quantity is for reference only; please confirm the actual quantity with the factory. |
| 2.The quality of each product varies, please check the specific defects and photos corresponding to the product. |
| 3.No shipping mark spec. available for comparison on site. |
| 4.No packing method spec. available for comparison on site. |
| 5.Please refer to the drawings for product measurement dimensions. |
| 6.No ref.samples were provided by client. |

| AVAILABLE QUANTITY: | | | | | | | | | | | |
|---------------------|------------|-----------|-----|--------|-----|--------------|-----|------------|-----|-------------|-----|
| Order No. | Item No. | Order Qty | | Packed | | Not finished | | Not packed | | Inspect Qty | |
| | | pcs | ctn | pcs | ctn | pcs | ctn | pcs | ctn | pcs | ctn |
| - | P00612-00B | 14052 | - | 14052 | - | 0 | 0 | 0 | 0 | 100 | 2 |
| - | 961154-00B | 3210 | - | 3210 | - | 0 | 0 | 0 | 0 | 100 | 2 |
| - | 534406-00B | 60180 | - | 60180 | - | 0 | 0 | 0 | 0 | 100 | 2 |
| - | P00362-00B | 7021 | - | 7021 | - | 0 | 0 | 0 | 0 | 100 | 2 |
| - | 182028-000 | 90270 | - | 90270 | - | 0 | 0 | 0 | 0 | 100 | 2 |
| - | P11743-000 | 10030 | - | 10030 | - | 0 | 0 | 0 | 0 | 100 | 2 |
| - | P08026-000 | 10030 | - | 10030 | - | 0 | 0 | 0 | 0 | 100 | 2 |



MT-INSPECTION

Final Random Inspection Report

Report No.: MT-20260429-005

| | | | | | | | | | | | |
|---------------|------------|---------------|---|---------------|---|----------|----------|----------|----------|-------------|-----------|
| - | 467436-00B | 115345 | - | 115345 | - | 0 | 0 | 0 | 0 | 100 | 2 |
| - | 138428-00B | 137475 | - | 137475 | - | 0 | 0 | 0 | 0 | 100 | 2 |
| - | 776090-00B | 10500 | - | 10500 | - | 0 | 0 | 0 | 0 | 100 | 2 |
| - | 004560-00B | 15045 | - | 15045 | - | 0 | 0 | 0 | 0 | 100 | 2 |
| Total: | | 473158 | - | 473158 | - | 0 | 0 | 0 | 0 | 1100 | 22 |

| Lot Size | General Inspection Levels | | | Special Inspection Levels | | | |
|--------------------|---------------------------|----|-----|---------------------------|----|----|----|
| | I | II | III | S1 | S2 | S3 | S4 |
| 2 to 8 | A | A | B | A | A | A | A |
| 9 to 15 | A | B | C | A | A | A | A |
| 16 to 25 | B | C | D | A | A | B | B |
| 26 to 50 | C | D | E | A | B | B | C |
| 51 to 90 | C | E | F | B | B | C | C |
| 91 to 150 | D | F | G | B | B | C | D |
| 151 to 280 | E | G | H | B | C | D | E |
| 281 to 500 | F | H | J | B | C | D | E |
| 501 to 1,200 | G | J | K | C | C | E | F |
| 1,201 to 3,200 | H | K | L | C | D | E | G |
| 3,201 to 10,000 | J | L | M | C | D | F | G |
| 10,001 to 35,000 | K | M | N | C | D | F | H |
| 35,001 to 150,000 | L | N | P | D | E | G | J |
| 150,001 to 500,000 | M | P | Q | D | E | G | J |
| 500,001 and over | N | Q | R | D | E | H | K |

Single sampling plans for normal inspection

| Sample Size Code Letter | Sample Size | Acceptable Quality Levels (Normal Inspection) | | | | | | | | | | | | | | | | | | | | | |
|-------------------------|-------------|---|---|------|--|------|--|------|--|------|--|------|--|-----|--|-----|--|-----|--|-----|--|-----|---|
| | | 0.065 | | 0.10 | | 0.15 | | 0.25 | | 0.40 | | 0.65 | | 1.0 | | 1.5 | | 2.5 | | 4.0 | | 6.5 | |
| A | 2 | | | | | | | | | | | | | | | | | | | | | 0 | 1 |
| B | 3 | | | | | | | | | | | | | | | | | | | | | 0 | 1 |
| C | 5 | | | | | | | | | | | | | | | | | | | | | 0 | 1 |
| D | 8 | | | | | | | | | | | | | | | | | | | | | 0 | 1 |
| E | 13 | | | | | | | | | | | | | | | | | | | | | 0 | 1 |
| F | 20 | | | | | | | | | | | | | | | | | | | | | 0 | 1 |
| G | 32 | | | | | | | | | | | | | | | | | | | | | 0 | 1 |
| H | 50 | | | | | | | | | | | | | | | | | | | | | 0 | 1 |
| J | 80 | | | | | | | | | | | | | | | | | | | | | 0 | 1 |
| K | 125 | | | | | | | | | | | | | | | | | | | | | 0 | 1 |
| L | 200 | 0 | 1 | | | | | | | | | | | | | | | | | | | 0 | 1 |
| M | 315 | | | | | | | | | | | | | | | | | | | | | 0 | 1 |
| N | 500 | | | | | | | | | | | | | | | | | | | | | 0 | 1 |
| P | 800 | 1 | 2 | | | | | | | | | | | | | | | | | | | 0 | 1 |
| Q | 1250 | 2 | 3 | | | | | | | | | | | | | | | | | | | 0 | 1 |
| R | 2000 | 3 | 4 | | | | | | | | | | | | | | | | | | | 0 | 1 |

| | | | | |
|---|-----------------------------|----------|------------|------------|
| Inspection standard: ANSI/ASQC Z1.4-2003 Sampling plan: <i>Single, Normal</i> Inspection level: Fixed AQL: Critical: Not Allowed. | Sample Size: 1100pcs | | | |
| | AQL: | 0 | 2.5 | 4.0 |
| | Defects Found: | 0 | 6 | 45 |
| | Max. Allowed: | 0 | - | - |
| | Critical | 0 | 2.5 | 4.0 |

This reflects our findings at the time and place in inspection. This inspection has been carried out to the best of our knowledge and ability and our responsibility is limited to the exercise of reasonable one. This report does not relieve the sellers from their contractual obligations nor prejudice buyer's right for compensation for any apparent and / or hidden defects not detected during our random inspection or occurring thereafter. This report does not evidence shipment.



Final Random Inspection Report

| WORKMANSHIP: | | | | | | |
|----------------------|-------------|----------------|---------------------|----------------|----------|-----------|
| Item No. | Sample size | Defective rate | Defects Description | Cri | Maj | Min |
| P00612-00B | 100 | 3% | Galvanized Rough | 0 | 0 | 3 |
| 961154-00B | 100 | 2% | Galvanized Rough | 0 | 0 | 2 |
| 534406-00B | 100 | 3% | Zinc slag | 0 | 0 | 3 |
| P00362-00B | 100 | 2% | Galvanized Rough | 0 | 0 | 2 |
| 182028-000 | 100 | 4% | Galvanized Rough | 0 | 0 | 4 |
| | | 1% | Zinc slag | 0 | 1 | 0 |
| P11743-000 | 100 | 5% | Zinc slag | 0 | 1 | 4 |
| | | 1% | Screw damage | 0 | 1 | 0 |
| P08026-000 | 100 | 4% | Galvanized Rough | 0 | 0 | 4 |
| 467436-00B | 100 | 7% | Galvanized Rough | 0 | 0 | 7 |
| 138428-00B | 100 | 5% | Galvanized Rough | 0 | 0 | 5 |
| 776090-00B | 100 | 10% | Galvanized Rough | 0 | 0 | 10 |
| 004560-00B | 100 | 1% | Galvanized Rough | 0 | 0 | 1 |
| | | 3% | Zinc slag | 0 | 3 | 0 |
| Total defect: | | | | 0 | 6 | 45 |
| Allowed: | | | | 0 | - | - |
| Result: | | | | Pending | | |

Defect Pictures:

01-P00612-00B



Galvanized Rough-min



Galvanized Rough-min



MT-INSPECTION

Final Random Inspection Report

Report No.: MT-20260429-005



N/A

Galvanized Rough-min

02-961154-00B



Galvanized Rough-min



Galvanized Rough-min

03-534406-00B



zinc slag-min



zinc slag-min



zinc slag-min

N/A

04-P00362-00B



Galvanized Rough-min



Galvanized Rough-min

05-182028-000



Galvanized Rough-min



Galvanized Rough-min



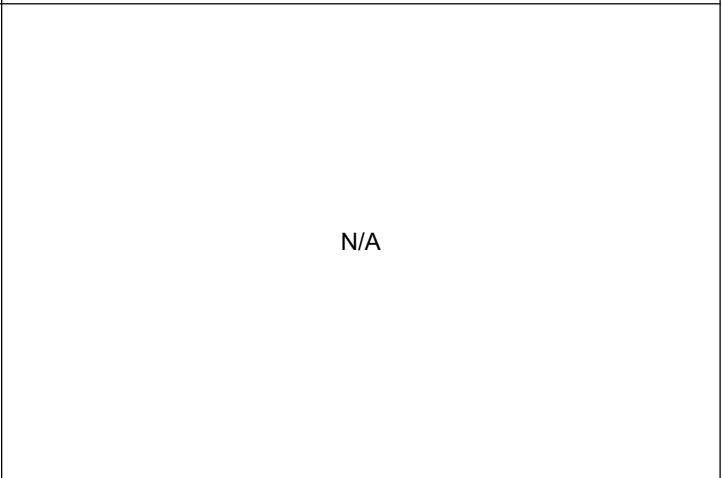
Galvanized Rough-min



Galvanized Rough-min



zinc slag-maj



N/A

06-P11743-000



zinc slag-min



zinc slag-min



MT-INSPECTION

Final Random Inspection Report

Report No.: MT-20260429-005



Screw damage-maj



zinc slag-min



zinc slag-maj



zinc slag-min

07-P08026-000



Galvanized Rough-min



Galvanized Rough-min



MT-INSPECTION

Final Random Inspection Report

Report No.: MT-20260429-005



Galvanized Rough-min



Galvanized Rough-min

08-467436-00B



Galvanized Rough-min



Galvanized Rough-min

09-138428-00B



Galvanized Rough-min

N/A

10-776090-00B



MT-INSPECTION

Final Random Inspection Report

Report No.: MT-20260429-005



Galvanized Rough-min



Galvanized Rough-min

11-004560-00B



zinc slag-maj



zinc slag-maj



Galvanized Rough-min



zinc slag-maj



Final Random Inspection Report

PRODUCT CONFORMITY & ON-SITE TESTS

| Check Points & On-site Tests | Sample Size | Criteria | Result & Remarks |
|---|-----------------|--|---------------------|
| Visual Check (Style, Appearance, Material, Color) | All Sample size | a. Conformance to Style / Appearance / Material / Color compared against: <input type="checkbox"/> Client's / <input type="checkbox"/> Factory's ref. sample. <input checked="" type="checkbox"/> No ref. sample for comparison. (N.B.: Provide details in comment section if 2 or more color shades and/or any color variation is found.) b. Free of nick, burrs, pits, sharp point or any other defects which may affect the product serviceability. c. Finish/ coating is smooth and even without streaks, blisters, wrinkles, or runs. d. Good overall appearance with good alignment of components. | PENDING Remark 3 |
| Match Test | All Sample size | The screw and nut should be able to match and assemble together. | Pass |
| Coating thickness | All Sample size | Check the thickness of coating | Pass |

PACKING AND ACCESSORIES:

| Item No.: | Master shipper (pcs/ctn) | Carton size L×W×H (cm) | G.W (Kg) | N.W (Kg) | Color box size L×W×H (cm) | Color box weight(g) | Carton Barcode | Color box Barcode |
|------------|----------------------------|------------------------|----------|----------|---------------------------|---------------------|----------------|-------------------|
| P00612-00B | 40 | 22.3x20.0x10.0 | 10.6160 | / | / | / | / | / |
| 961154-00B | 160 | 22.5x20.0x10.0 | 10.2525 | / | / | / | / | / |
| 534406-00B | 230 | 22.5x20.0x10.0 | 10.1035 | / | / | / | / | / |
| P00362-00B | 75 | 22.5x20.0x10.0 | 10.0720 | / | / | / | / | / |
| 182028-000 | 1300 | 26.5x25.5x11.5 | 19.613 | / | / | / | / | / |
| P11743-000 | 400 | 27.0x25.5x14.0 | 17.911 | / | / | / | / | / |
| P08026-000 | 410 | 23.5x13.5x14.0 | 8.725 | / | / | / | / | / |
| 467436-00B | 1700 | 24.0x13.5x14.0 | 9.3326 | / | / | / | / | / |
| 138428-00B | 1500 | 23.5x13.5x14.0 | 9.2735 | / | / | / | / | / |
| 776090-00B | 3500 | 24.0x13.5x14.0 | 10.0965 | / | / | / | / | / |
| 004560-00B | 150 | 22.5x20.0x10.0 | 9.869 | / | / | / | / | / |

PRODUCT SPECIFICATION:

| Item No.: | Check point | Client Spec. | Ref. Sample | Sample 1# | Sample 2# | Sample 3 # |
|------------|--------------|--------------|-------------|-----------------------------------|-----------|------------|
| P00612-00B | Size check | / | / | Pls check size records on drawing | | |
| | Weight check | / | / | 264 | 263 | 261.5 |
| 961154-00B | Size check | / | / | Pls check size records on drawing | | |
| | Weight check | / | / | 63 | 63 | 63 |
| 534406-00B | Size check | / | / | Pls check size records on drawing | | |
| | Weight check | / | / | 43.5 | 42.5 | 42.5 |
| P00362-00B | Size check | / | / | Pls check size records on drawing | | |
| | Weight check | / | / | 135.5 | 135.5 | 134.0 |



MT-INSPECTION



Final Random Inspection Report

Report No.: MT-20260429-005

| | | | | | | |
|----------------|--------------|---|---|-----------------------------------|------|------|
| 182028-00 | Size check | / | / | Pls check size records on drawing | | |
| | Weight check | / | / | 15.2 | 15.0 | 14.6 |
| P11743-00 0 | Size check | / | / | Pls check size records on drawing | | |
| | Weight check | / | / | 43.4 | 44.2 | 43.8 |
| P08026-00 0 | Size check | / | / | Pls check size records on drawing | | |
| | Weight check | / | / | 21.5 | 21.5 | 21.0 |
| 467436-00 B | Size check | / | / | Pls check size records on drawing | | |
| | Weight check | / | / | 6.0 | 7.0 | 7.5 |
| 138428-00 B | Size check | / | / | Pls check size records on drawing | | |
| | Weight check | / | / | 7.0 | 8.5 | 8.5 |
| 776090-00 B | Size check | / | / | Pls check size records on drawing | | |
| | Weight check | / | / | 2.5 | 2.0 | 2.5 |
| 004560-00 B | Size check | / | / | Pls check size records on drawing | | |
| | Weight check | / | / | 65.0 | 65.0 | 65.5 |

| EXPORT CARTON INFORMATION: | | | | | |
|----------------------------|-------------------------|------|-----------------|-------------------------|-----|
| Carton: | New export carton | Yes | Sealing: | Opaque gummed tape | - |
| Fastening: | Metal staples | Yes | | Transparent gummed tape | Yes |
| Strapping: | Nylonx2 | No | | Paper tape | - |
| Material: | Ply of corrugated paper | 5ply | Others: | - | |

Product photo show& Measurement and Test

| | |
|---|--|
| 01-P00612-00B | |
|  |  |
| packing box | packing box |

This reflects our findings at the time and place in inspection. This inspection has been carried out to the best of our knowledge and ability and our responsibility is limited to the exercise of reasonable one. This report does not relieve the sellers from their contractual obligations nor prejudice buyer's right for compensation for any apparent and / or hidden defects not detected during our random inspection or occurring thereafter. This report does not evidence shipment.



MT-INSPECTION

Final Random Inspection Report

Report No.: MT-20260429-005



| | |
|------------------|---|
| Part Number | P00612-00B |
| Part Description | GALV CLEVIS BOLT M20-85-52-33 HOLE5.5 L=9(8.8) |
| QTY | 40 PCS |
| Net Weight | 10.52 KGS |
| Gross weight | 10.82 KGS |

Lable



packing box size



packing box size



packing box size



packing box size



packing box size



Final Random Inspection Report



Gross weight



open



5-ply



Product Details



Product Details



Product Details



MT-INSPECTION

Final Random Inspection Report

Report No.: MT-20260429-005



Product Details



Product Details



Product Details



Product Details



Product weight



Product weight



Final Random Inspection Report



Product weight



Product size



Product size



Product size



Product size



Product size



Final Random Inspection Report



Product size



Product size



Product size



Product size



Product size



Product size



Final Random Inspection Report



Product size



Product size



Product size



Product size



Product size



Product size



Final Random Inspection Report



Product size



Product size



Product size



Product size



Zinc layer thickness test



Zinc layer thickness test



Final Random Inspection Report



Zinc layer thickness test



Zinc layer thickness test



Functional testing



Functional testing



Functional testing



Product size



MT-INSPECTION

Final Random Inspection Report

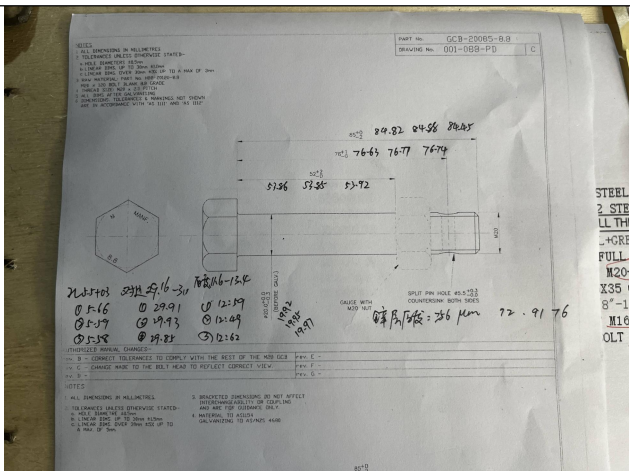
Report No.: MT-20260429-005



Product size



Product size



Size records on drawing

N/A

02-961154-00B



packing box



packing box



MT-INSPECTION

Final Random Inspection Report

Report No.: MT-20260429-005



lable



packing box size



packing box size



packing box size



packing box size



packing box size



MT-INSPECTION

Final Random Inspection Report

Report No.: MT-20260429-005



Gross weight



open



5-ply



Product Details



Product Details



Product Details



Final Random Inspection Report



Product Details



Product Details



Product size



Product size



Product size



Product size



Final Random Inspection Report



Product size



Product size



Product weight



Product weight



Product weight



Product size



Final Random Inspection Report



Product size



Product size



Product size



Product size



Product size



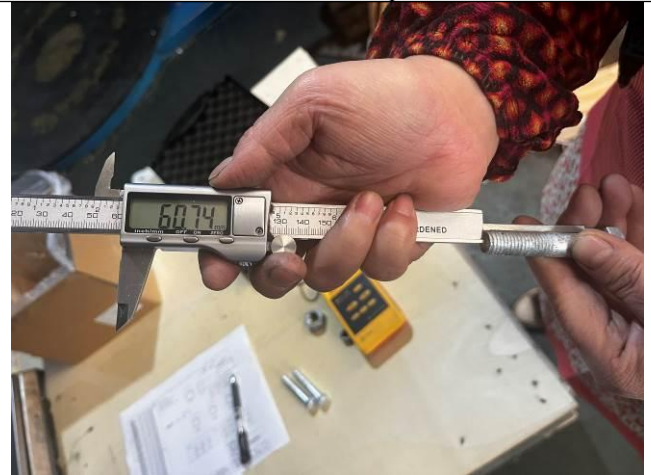
Product size



Final Random Inspection Report



Product size



Product size



Zinc layer thickness test



Zinc layer thickness test



Zinc layer thickness test



Zinc layer thickness test



MT-INSPECTION

Final Random Inspection Report

Report No.: MT-20260429-005



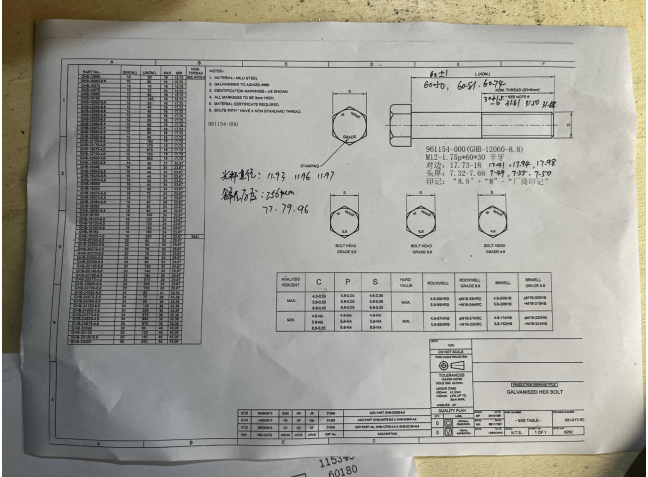
Functional testing



Functional testing



Functional testing



Size records on drawing

03-534406-00B



packing box



packing box



MT-INSPECTION

Final Random Inspection Report

Report No.: MT-20260429-005



packing box



packing box size



packing box size



packing box size



packing box size



packing box size



MT-INSPECTION

Final Random Inspection Report

Report No.: MT-20260429-005



Gross weight



open



5-ply



Product Details



Product Details



Product Details



Final Random Inspection Report



Product Details



Product Details



Product weight



Product weight



Product weight



Product size



Final Random Inspection Report



Product size



Product size



Product size



Product size



Product size



Product size



Final Random Inspection Report



Product size



Product size



Product size



Zinc layer thickness test



Zinc layer thickness test



Zinc layer thickness test



Final Random Inspection Report

MT-INSPECTION

Report No.: MT-20260429-005



Zinc layer thickness test



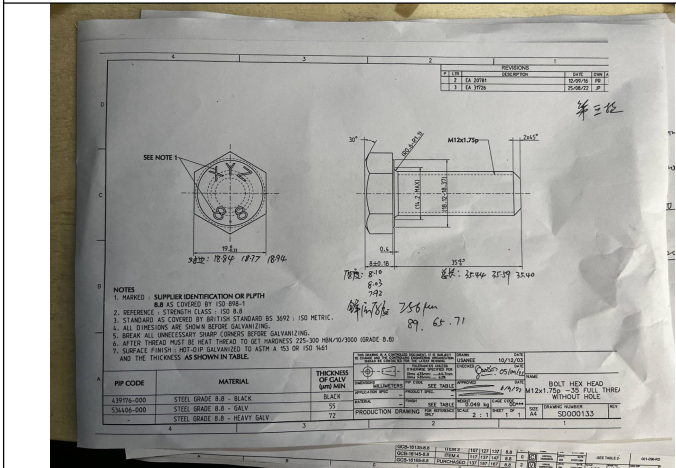
Functional testing



Functional testing



Functional testing



Size records on drawing

N/A

04-P00362-00B



MT-INSPECTION

Final Random Inspection Report

Report No.: MT-20260429-005



packing box



packing box



| | |
|------------------|--|
| Part Number | P00362-00B |
| Part Description | GALV CLEVIS BOLT M16-70-41-29 HOLE5.5 L=9 (8.8) |
| QTY | 75 PCS |
| Net Weight | 10.07 KGS |
| Gross weight | 10.27 KGS |

lable



packing box size



packing box size



packing box size



MT-INSPECTION

Final Random Inspection Report

Report No.: MT-20260429-005



packing box size



packing box size

| | |
|------------------|--|
| Part Number | P00362-00B |
| Part Description | GALV C/LEVIS BOLT M16-70-41-35 HOLE 5.5 L-9 (B.B) |
| QTY | 75 PCS |
| Net Weight | 10.07 KGS |
| Gross weight | 10.27 KGS |



Gross weight



open



5-ply



Product Details



MT-INSPECTION

Final Random Inspection Report

Report No.: MT-20260429-005



Product Details



Product Details



Product Details



Product Details



Product weight



Product weight



Final Random Inspection Report



Product weight



Product size



Product size



Product size



Product size



Product size



Final Random Inspection Report



Product size



Product size



Product size



Product size



Product size



Product size



Final Random Inspection Report



Product size



Product size



Product size



Product size



Product size



Product size



Final Random Inspection Report



Product size



Zinc layer thickness test



Zinc layer thickness test



Zinc layer thickness test



Zinc layer thickness test



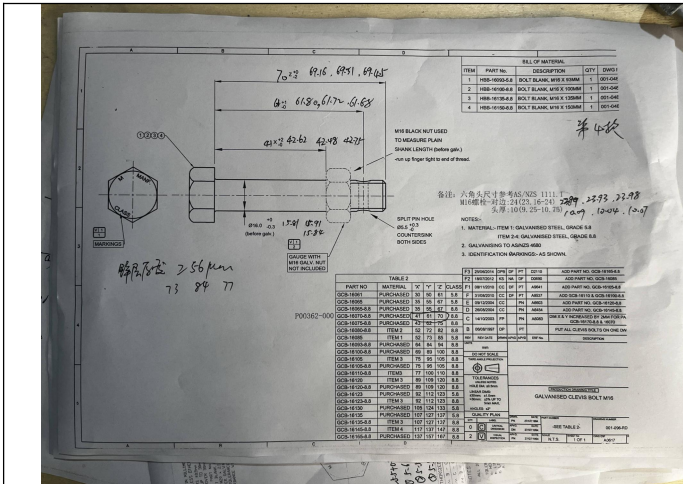
Zinc layer thickness test



Final Random Inspection Report

MT-INSPECTION

Report No.: MT-20260429-005



N/A

Size records on drawing

05-182028-000



packing box



packing box



lable



packing box size



Final Random Inspection Report



packing box size



packing box size



packing box size



packing box size



Gross weight



open



MT-INSPECTION

Final Random Inspection Report

Report No.: MT-20260429-005



5-ply



Product Details



Product Details



Product Details



Product Details



Product Details



Final Random Inspection Report



Product weight



Product weight



Product weight



Product size



Product size



Product size



Final Random Inspection Report



Product size



Product size



Product size



Product size



Product size



Product size



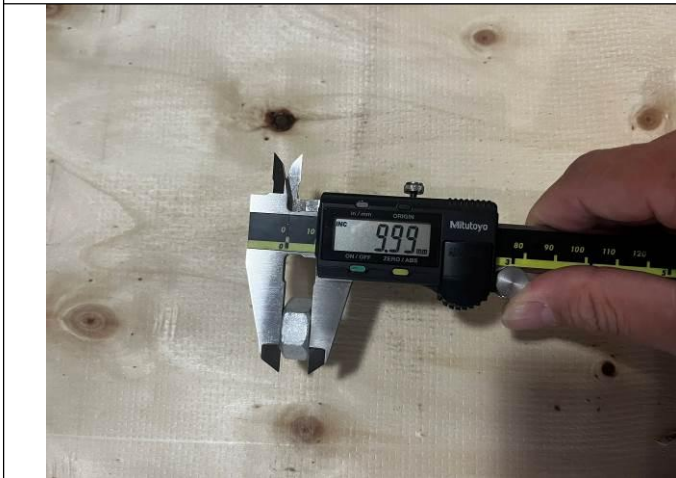
Final Random Inspection Report



Product size



Product size



Product size



Product size



Product size



Product size



Final Random Inspection Report



Product size



Product size



Zinc layer thickness test



Zinc layer thickness test



Zinc layer thickness test



Zinc layer thickness test



MT-INSPECTION

Final Random Inspection Report

Report No.: MT-20260429-005



Functional testing



Functional testing

DOUBLE CHAMFERED

| THREAD SIZE | M10 | M12 | M14 | M16 | M18 | M20 | M22 | M24 | M27 | M30 |
|------------------|-------------|-------------|-------------|-------------|-------------|-------------|-------------|-------------|-------------|-------------|
| PITCH | 1.5 | 1.75 | 2.0 | 2.5 | 2.5 | 2.5 | 3.0 | 3.0 | 3.5 | 3.5 |
| THE THICKNESS OF | 17.00-16.73 | 19.00-18.87 | 22.00-21.87 | 26.00-25.87 | 27.00-26.87 | 30.00-29.87 | 32.00-31.87 | 36.00-35.87 | 41.00-40.87 | 44.00-43.87 |
| GALVANIZING | 0.011 | 0.016 | 0.024 | 0.032 | 0.040 | 0.050 | 0.063 | 0.079 | 0.098 | 0.120 |

NOTES:
 1. MATERIAL: STEEL GRADE 8
 2. TOLERANCES OF DIMENSIONS AS COVERED BY BRITISH STANDARD ISO METRIC.
 3. STANDARD OF THE MATERIAL'S STRENGTH AS COVERED BY ISO METRIC AND PROPERTY CLASS 8 IS REQUIRED.
 4. REMOVE ALL BURRS AND SHARP EDGES BEFORE GALVANIZING.
 5. SURFACE FINISH: HOT-DIP GALVANIZED TO ASTM A 153 (ISO 14543).

N/A

Size records on drawing

06-P11743-000



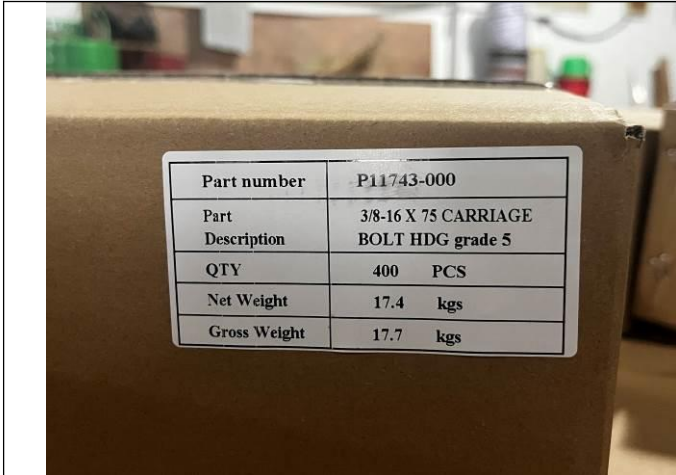
packing box



packing box



Final Random Inspection Report



lable



packing box size



packing box size



packing box size



packing box size



packing box size



MT-INSPECTION

Final Random Inspection Report

Report No.: MT-20260429-005



Gross weight



open



5-ply



Product Details



Product Details



Product Details



MT-INSPECTION

Final Random Inspection Report

Report No.: MT-20260429-005



Product Details



Product Details



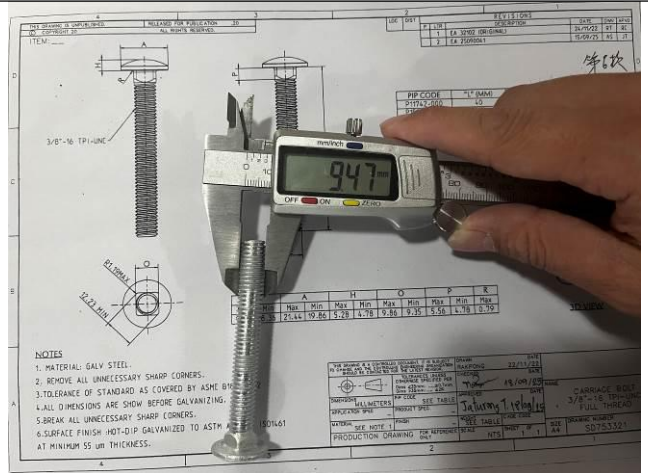
Product weight



Product weight



Product weight



Product size



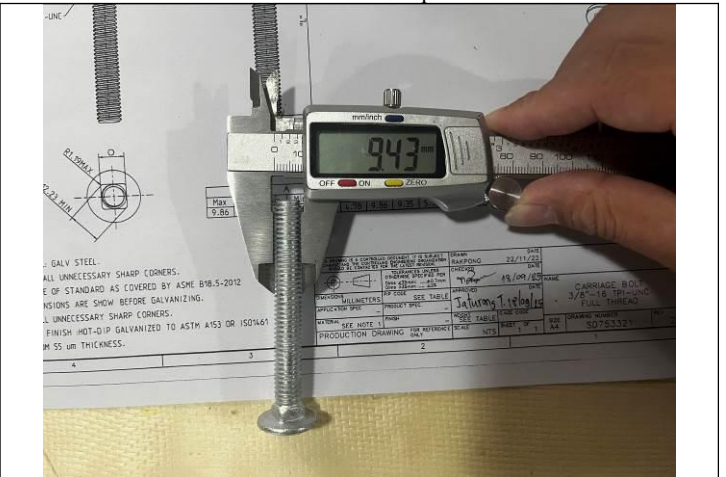
Final Random Inspection Report

MT-INSPECTION

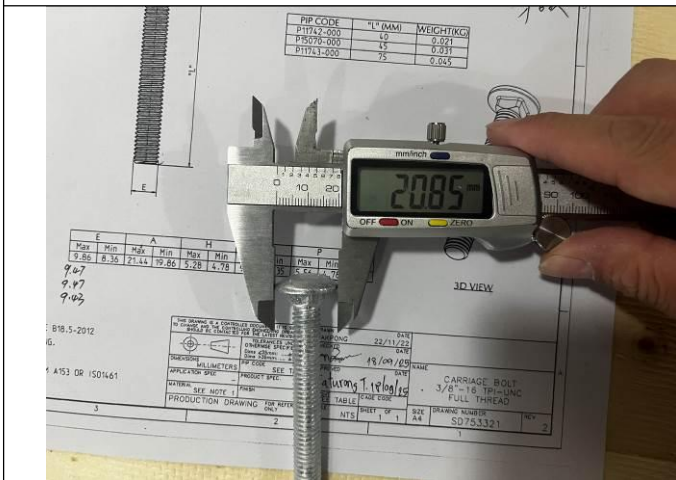
Report No.: MT-20260429-005



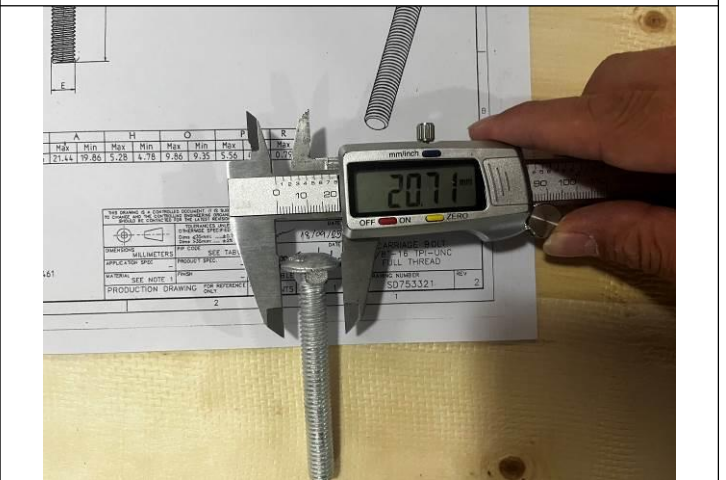
Product size



Product size



Product size



Product size



Product size



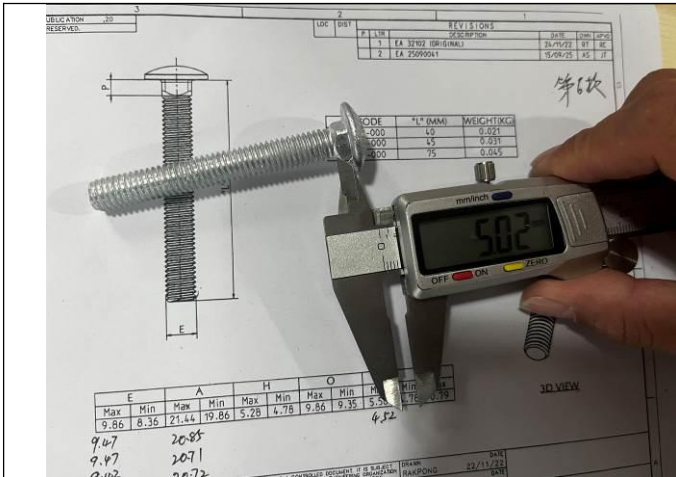
Product size



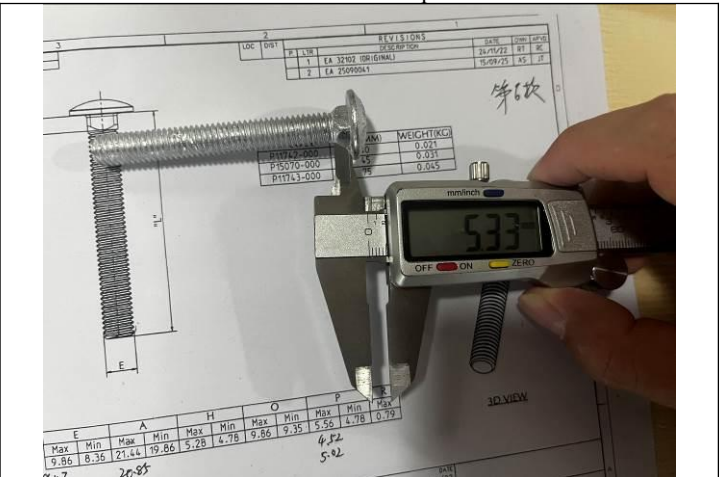
MT-INSPECTION

Final Random Inspection Report

Report No.: MT-20260429-005



Product size



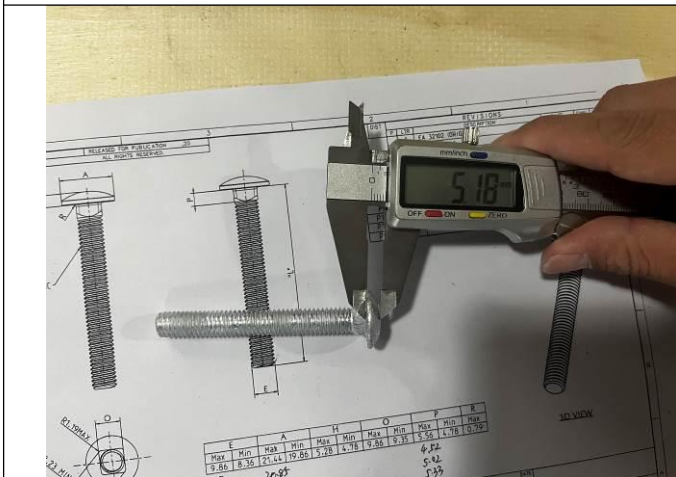
Product size



Product size



Product size



Product size



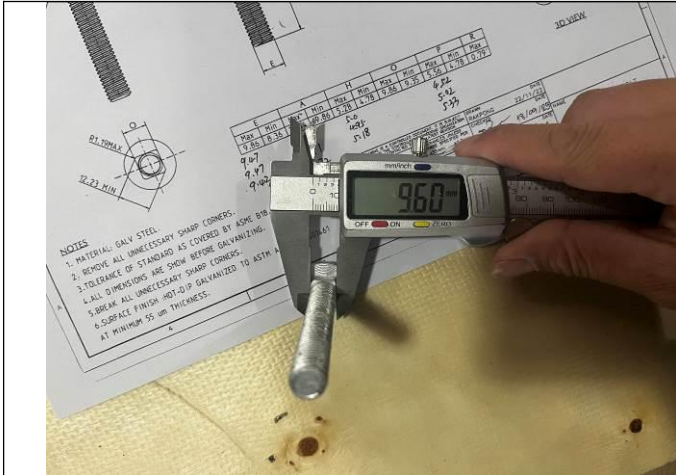
Product size



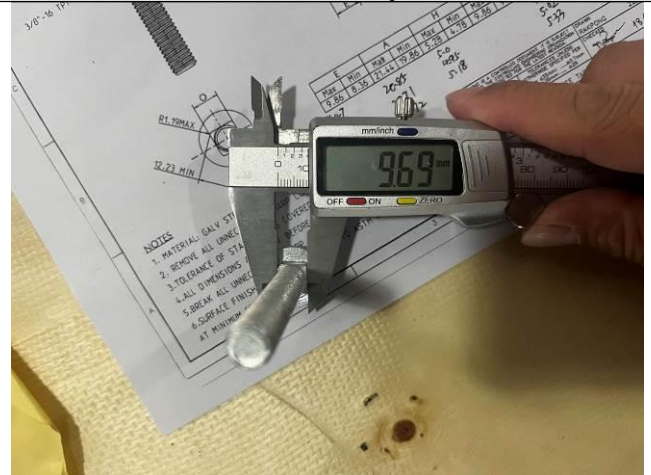
Final Random Inspection Report

MT-INSPECTION

Report No.: MT-20260429-005



Product size



Product size



Zinc layer thickness test



Zinc layer thickness test



Zinc layer thickness test



Zinc layer thickness test



MT-INSPECTION

Final Random Inspection Report

Report No.: MT-20260429-005



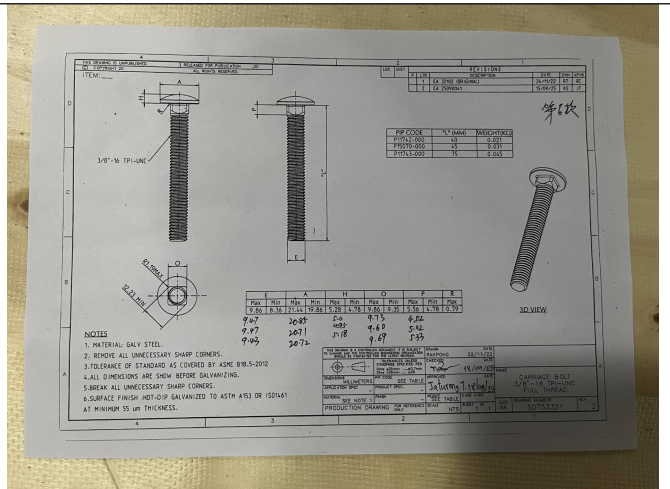
Functional testing



Functional testing



Functional testing



Size records on drawing

07-P08026-000



packing box



packing box

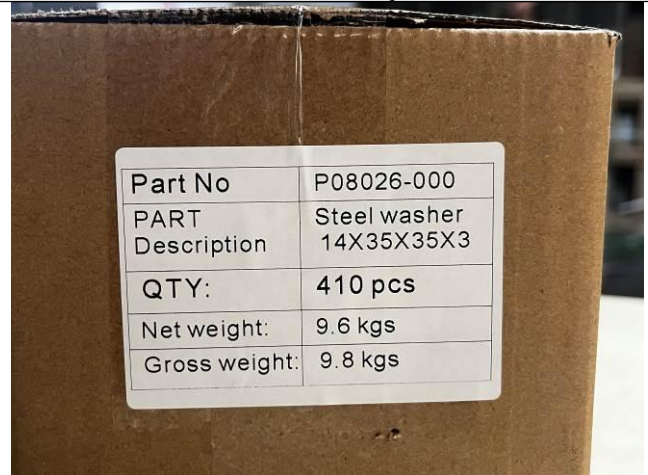


Final Random Inspection Report



| | |
|------------------|----------------------------|
| Part No | P08026-000 |
| PART Description | Steel washer 14X35X35X3 |
| QTY: | 410 pcs |
| Net weight: | 9.6 kgs |
| Gross weight: | 9.8 kgs |

packing box



| | |
|------------------|----------------------------|
| Part No | P08026-000 |
| PART Description | Steel washer 14X35X35X3 |
| QTY: | 410 pcs |
| Net weight: | 9.6 kgs |
| Gross weight: | 9.8 kgs |

lable



packing box size



packing box size



packing box size



packing box size



MT-INSPECTION

Final Random Inspection Report

Report No.: MT-20260429-005

| | |
|------------------------|------------------------|
| | |
| <p>Gross weight</p> | <p>open</p> |
| | |
| <p>5-ply</p> | <p>Product Details</p> |
| | |
| <p>Product Details</p> | <p>Product Details</p> |



Final Random Inspection Report



Product Details



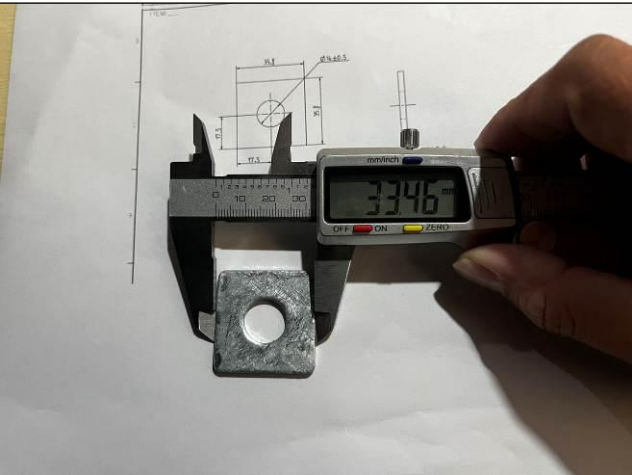
Product weight



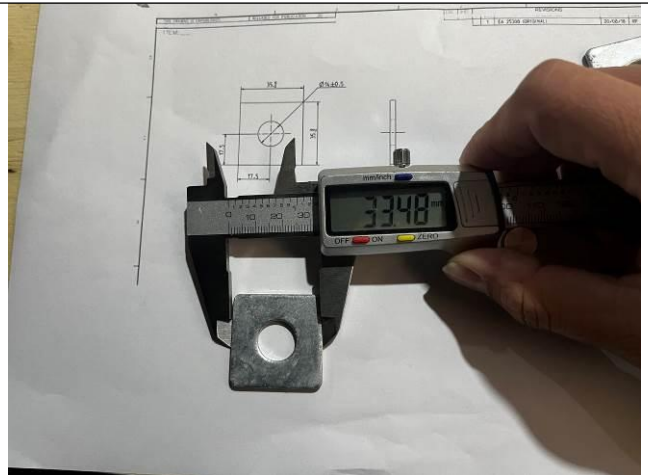
Product weight



Product weight



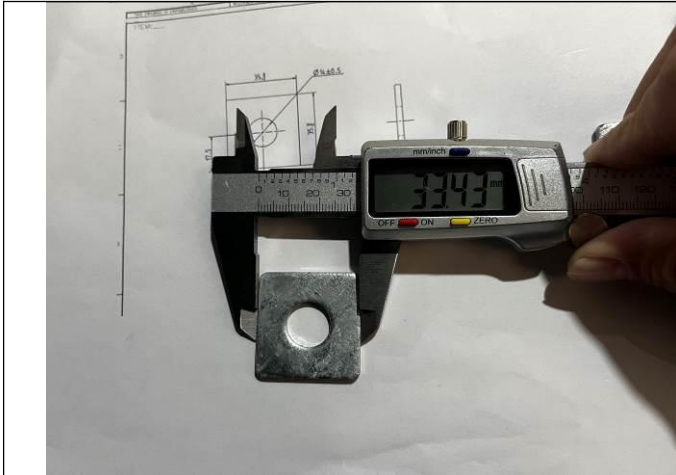
Product size



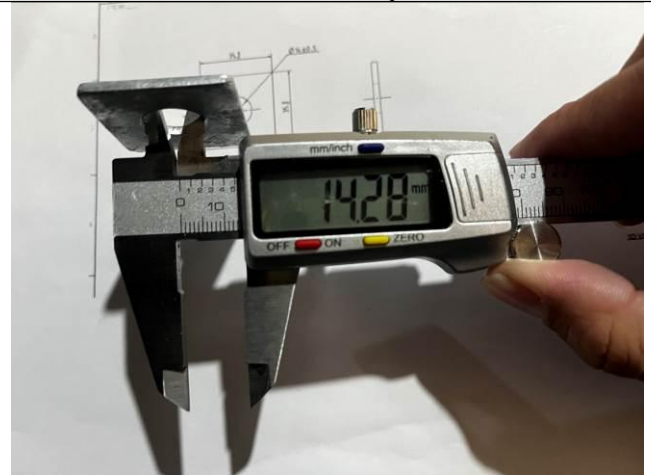
Product size



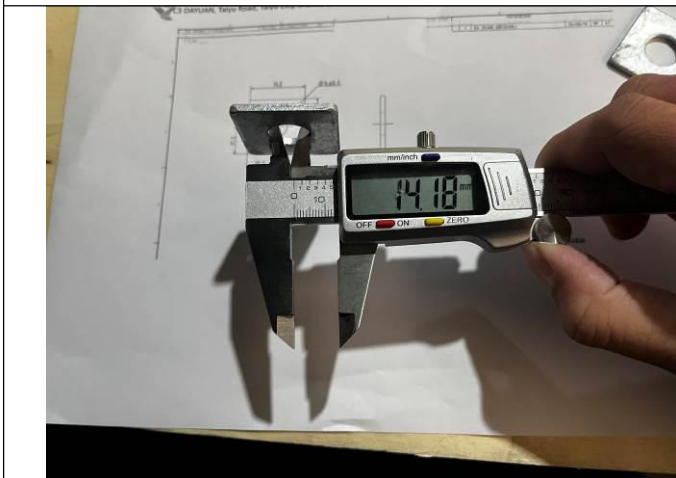
Final Random Inspection Report



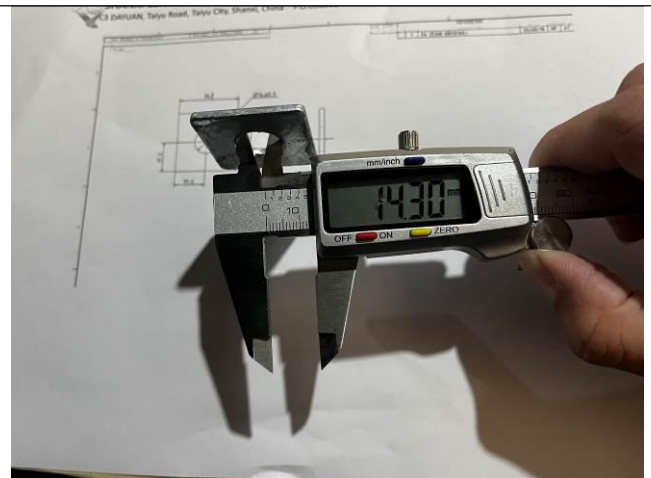
Product size



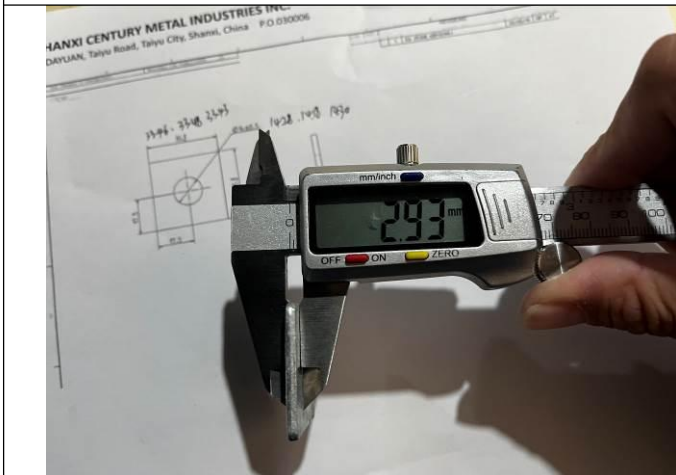
Product size



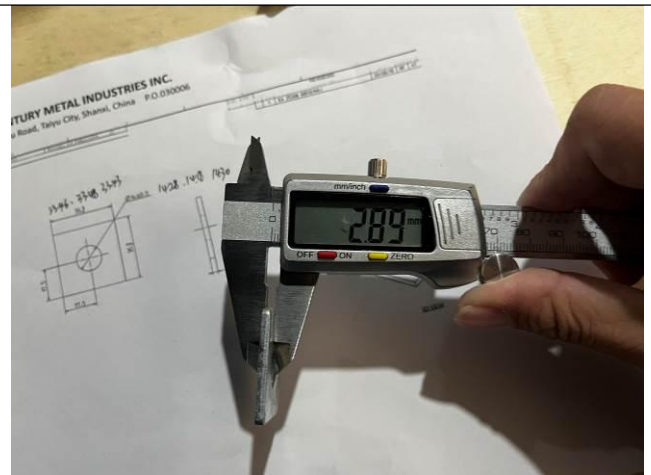
Product size



Product size



Product size



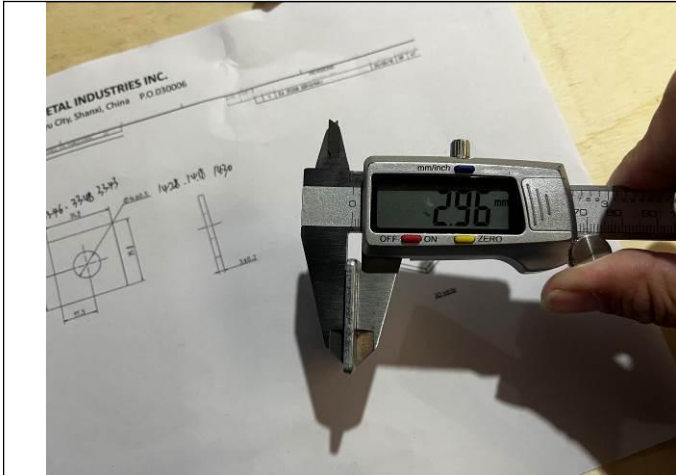
Product size



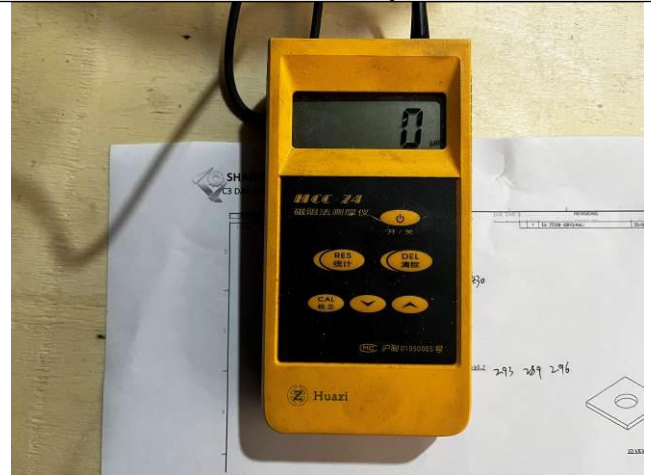
MT-INSPECTION

Final Random Inspection Report

Report No.: MT-20260429-005



Product size



Zinc layer thickness test



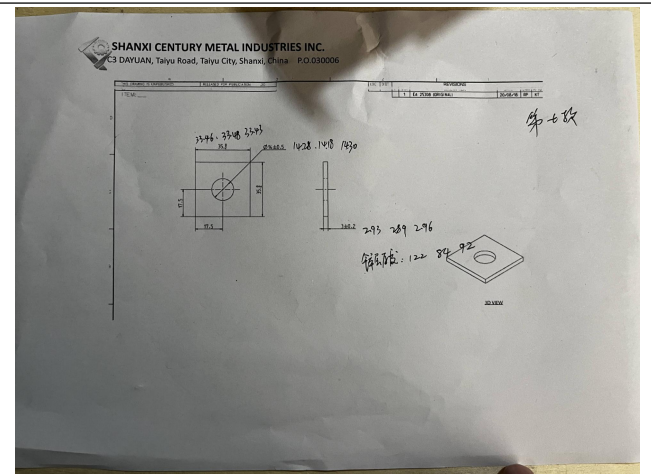
Zinc layer thickness test



Zinc layer thickness test



Zinc layer thickness test



Size records on drawing

08-467436-00B



Final Random Inspection Report



packing box



packing box

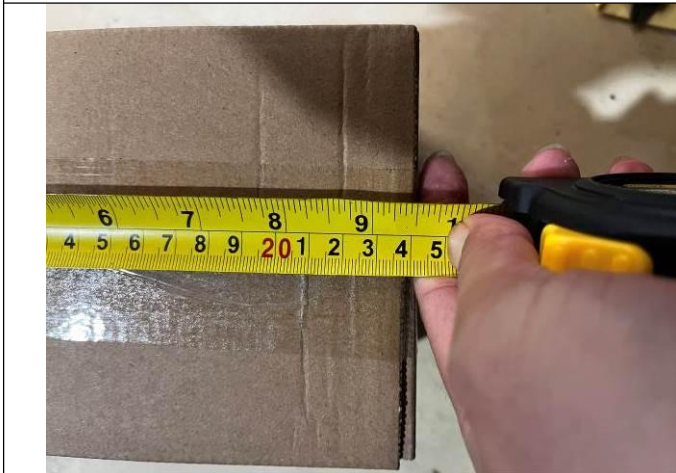


lable

| | |
|--------------|-------------|
| Part number | 467436-00B |
| Part | FLAT WASHER |
| Description | M 12 STEEL |
| QTY | 1700 pcs |
| Net Weight | 9.3 kg |
| Gross Weight | 9.4 kg |



packing box size



packing box size



packing box size



MT-INSPECTION

Final Random Inspection Report

Report No.: MT-20260429-005



packing box size



Gross weight



open



5-ply



Product Details



Product Details



Final Random Inspection Report



Product Details



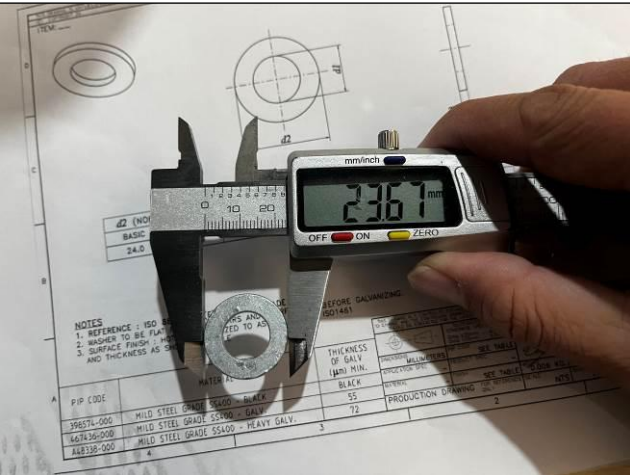
Product weight



Product weight



Product weight



Product size



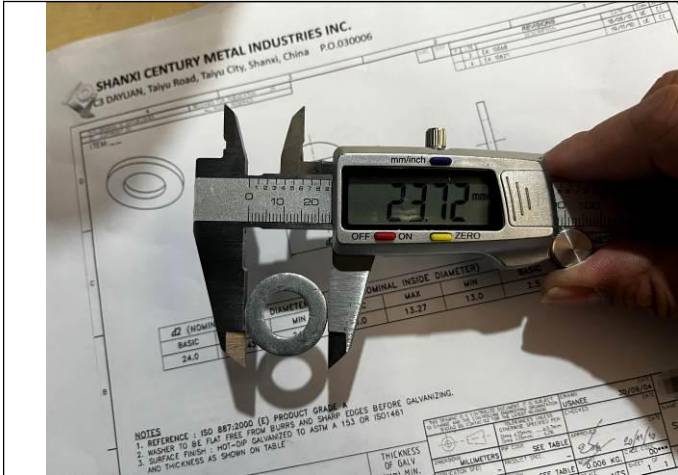
Product size



Final Random Inspection Report

MT-INSPECTION

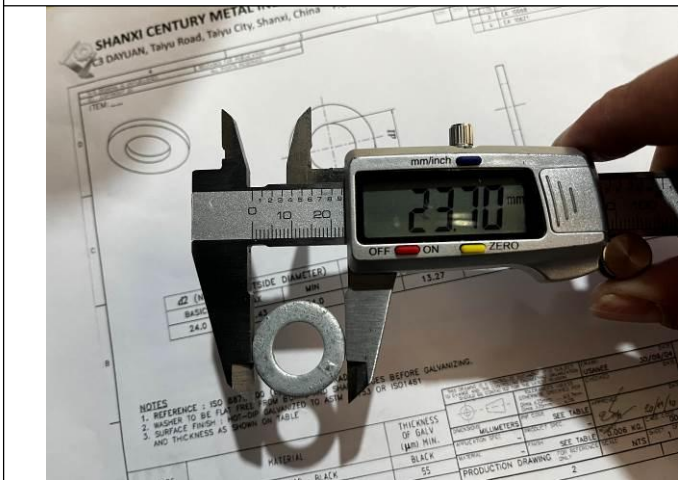
Report No.: MT-20260429-005



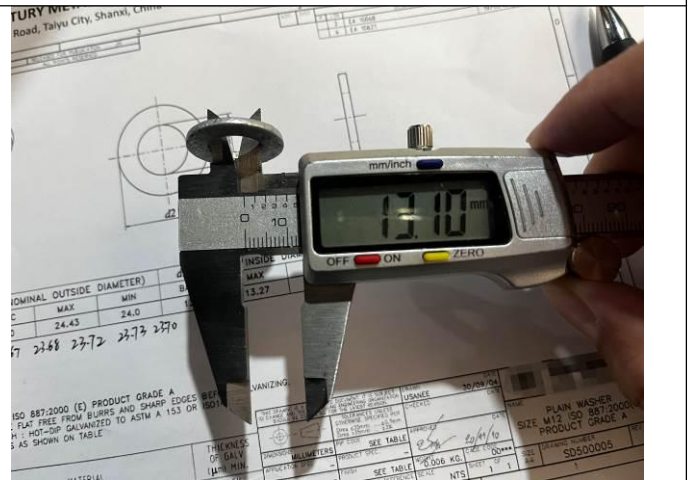
Product size



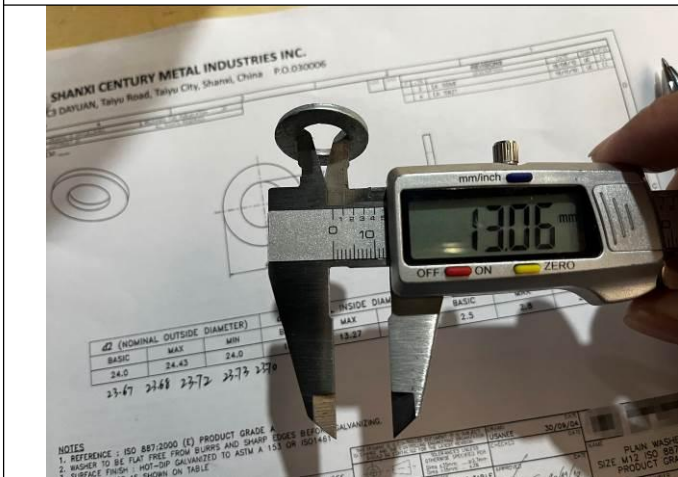
Product size



Product size



Product size



Product size



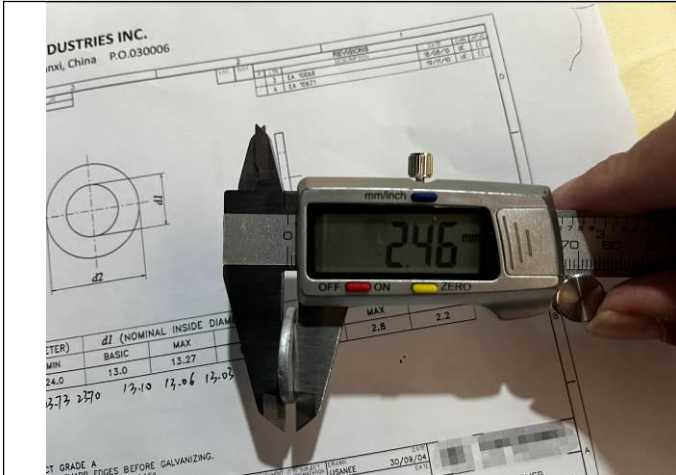
Product size



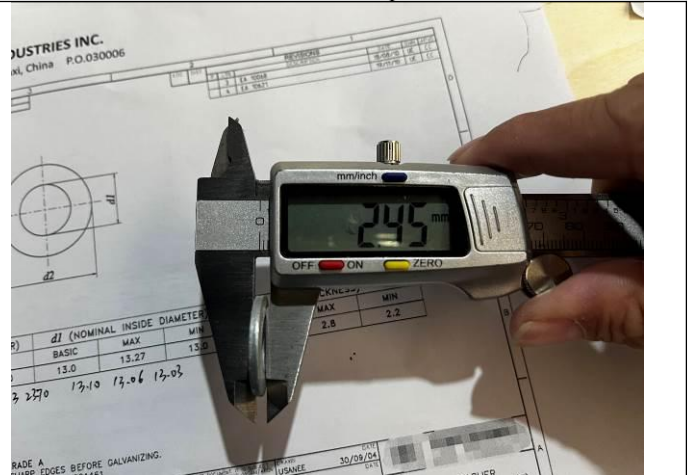
Final Random Inspection Report

MT-INSPECTION

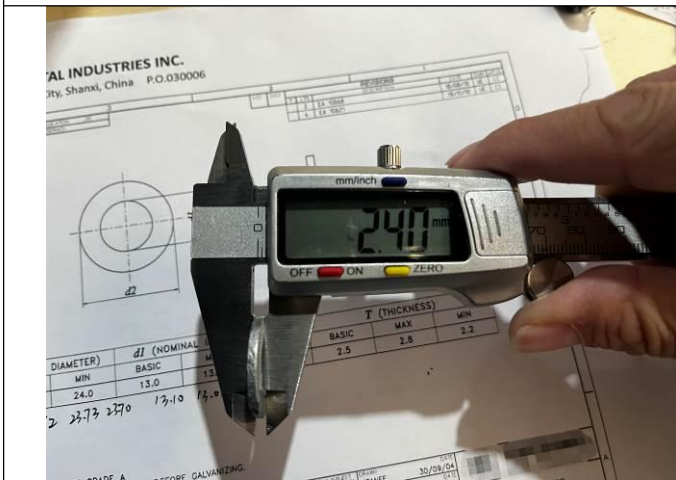
Report No.: MT-20260429-005



Product size



Product size



Product size



Zinc layer thickness test



Zinc layer thickness test



Zinc layer thickness test



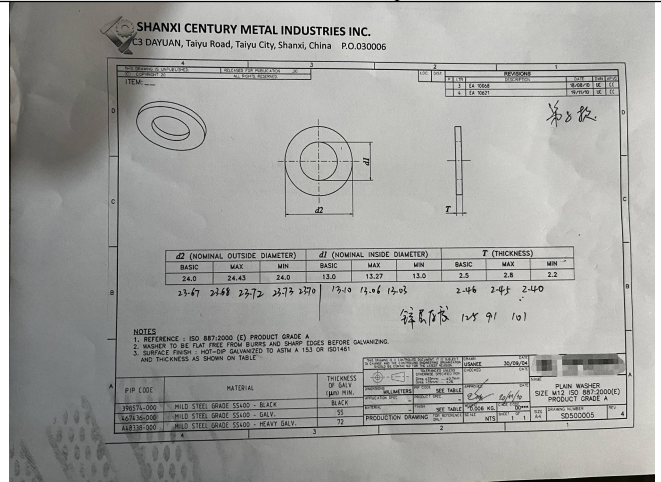
MT-INSPECTION

Final Random Inspection Report

Report No.: MT-20260429-005



Zinc layer thickness test



Size records on drawing

09-138428-00B



packing box



packing box



lable



packing box size



Final Random Inspection Report



packing box size



packing box size



packing box size



Gross weight



open



5-ply



MT-INSPECTION

Final Random Inspection Report

Report No.: MT-20260429-005



Product Details



Product Details



Product Details



Product Details



Product weight



Product weight



MT-INSPECTION

Final Random Inspection Report

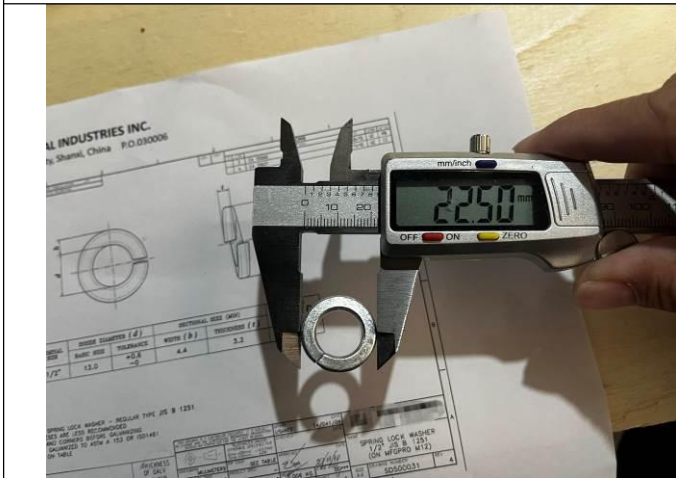
Report No.: MT-20260429-005



Product weight



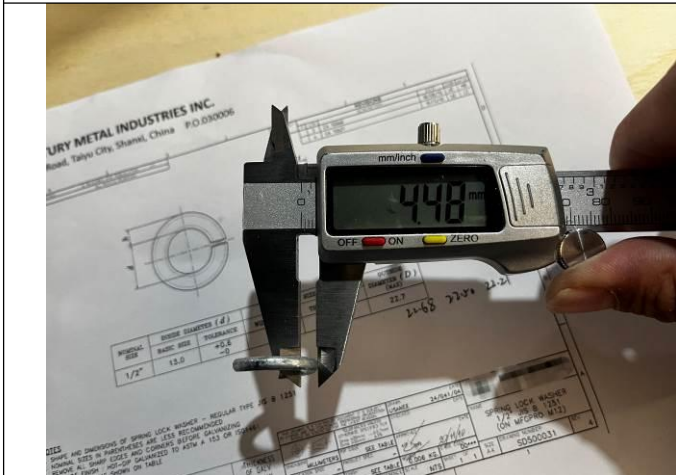
Product size



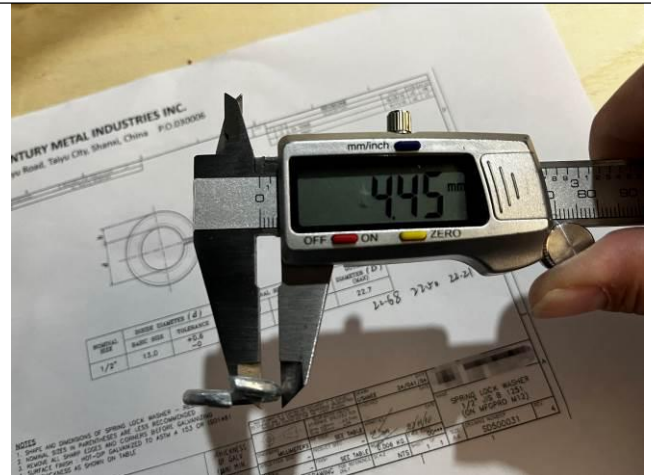
Product size



Product size



Product size



Product size



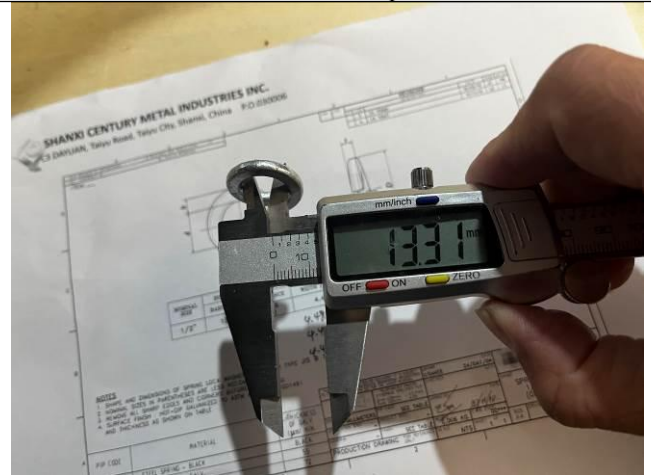
MT-INSPECTION

Final Random Inspection Report

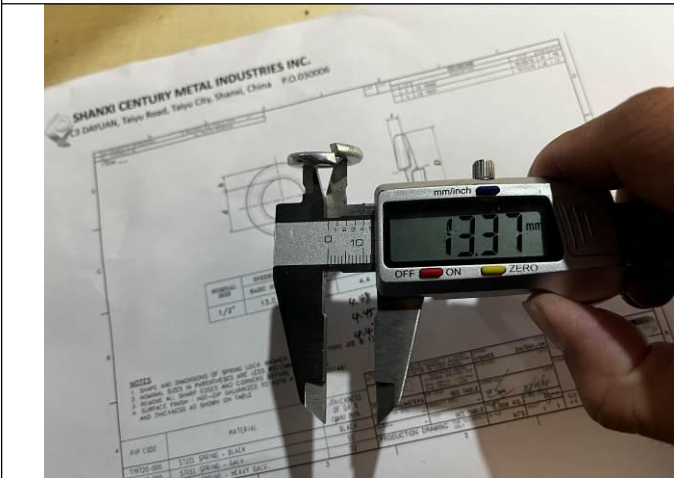
Report No.: MT-20260429-005



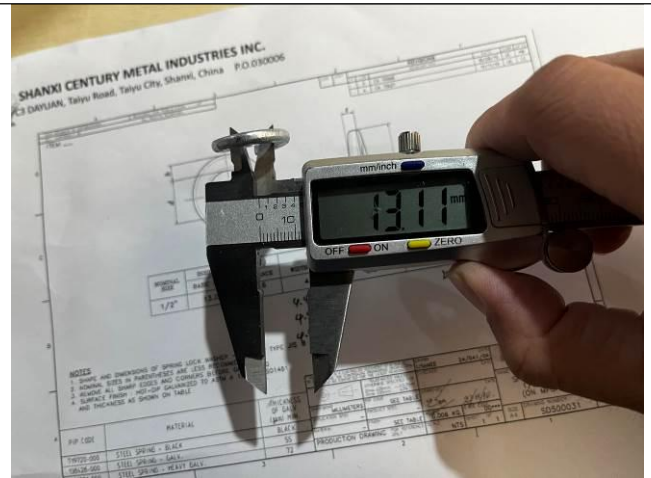
Product size



Product size



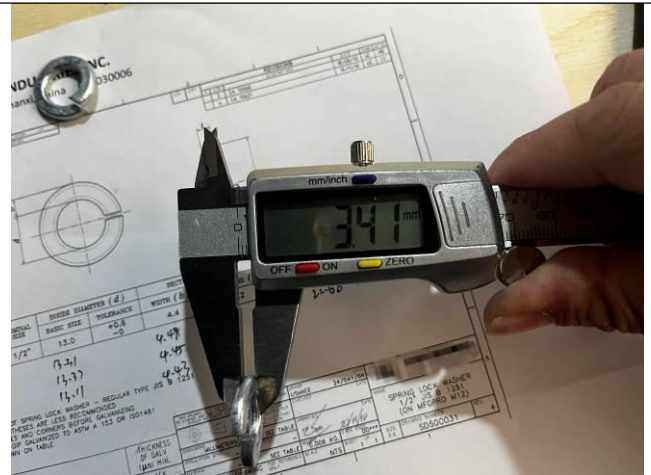
Product size



Product size



Product size



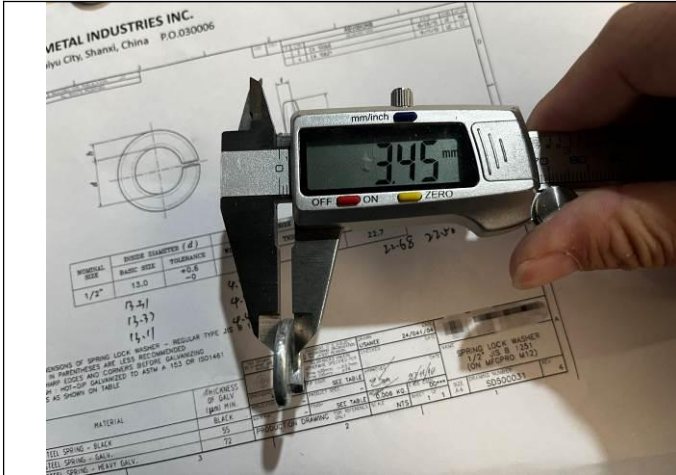
Product size



MT-INSPECTION

Final Random Inspection Report

Report No.: MT-20260429-005



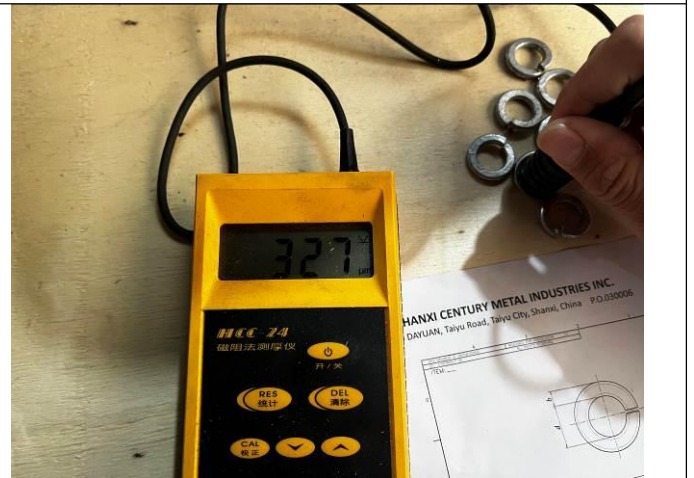
Product size



Zinc layer thickness test



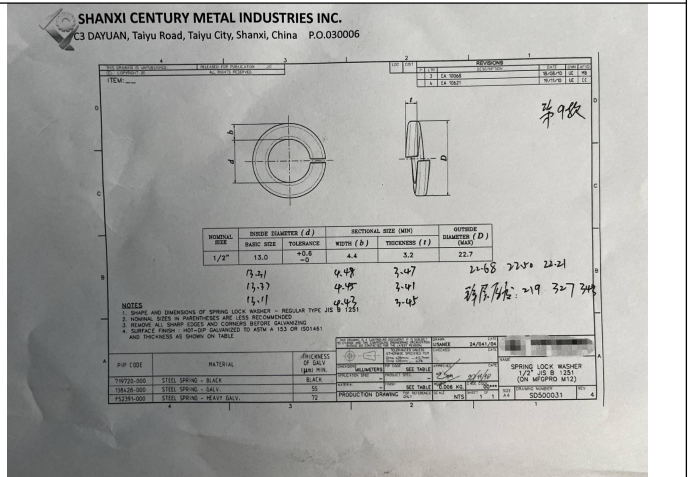
Zinc layer thickness test



Zinc layer thickness test



Zinc layer thickness test



Size records on drawing

10-776090-00B



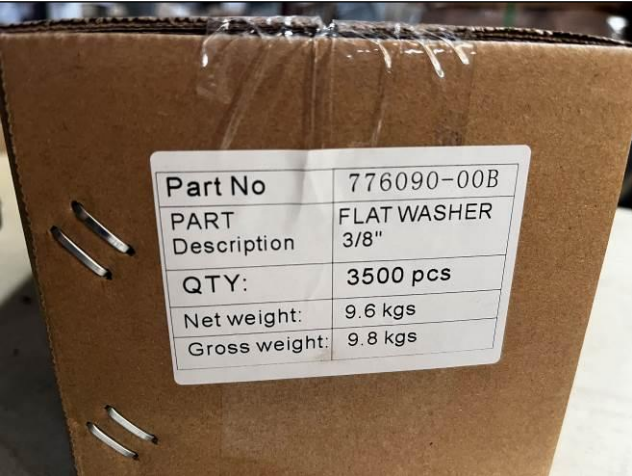
Final Random Inspection Report



packing box



packing box



lable

| | |
|------------------|------------------|
| Part No | 776090-00B |
| PART Description | FLAT WASHER 3/8" |
| QTY: | 3500 pcs |
| Net weight: | 9.6 kgs |
| Gross weight: | 9.8 kgs |



packing box size



packing box size



packing box size



MT-INSPECTION

Final Random Inspection Report

Report No.: MT-20260429-005



packing box size



Gross weight



open



5-ply



Product Details



Product Details



MT-INSPECTION

Final Random Inspection Report

Report No.: MT-20260429-005



Product weight



Product weight



Product weight



Product size



Product size



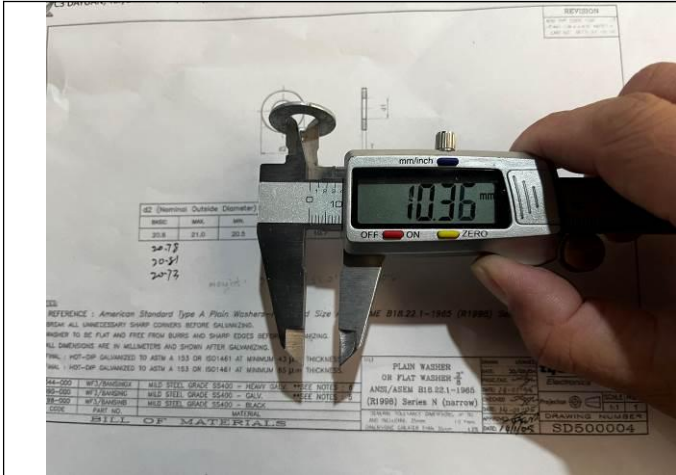
Product size



MT-INSPECTION

Final Random Inspection Report

Report No.: MT-20260429-005



Product size



Product size



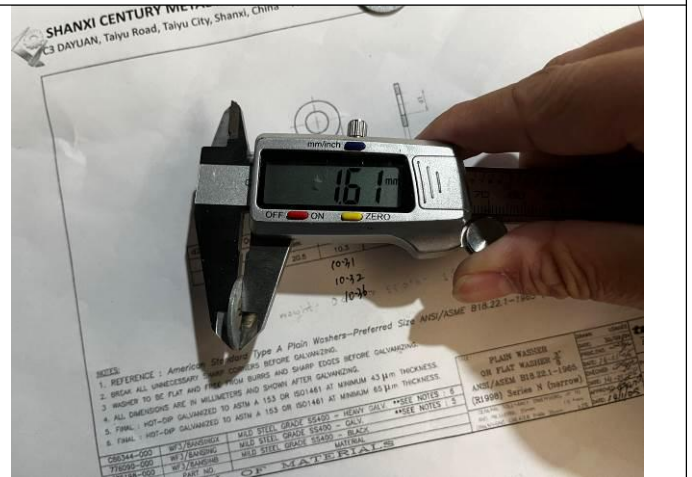
Product size



Product size



Product size



Product size



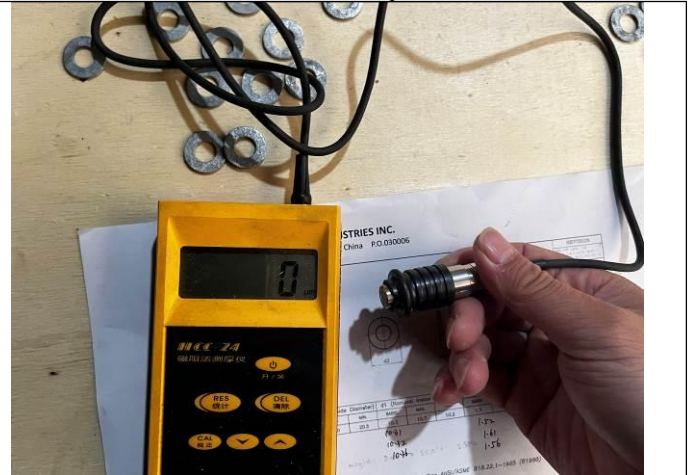
Final Random Inspection Report

MT-INSPECTION

Report No.: MT-20260429-005



Zinc layer thickness test



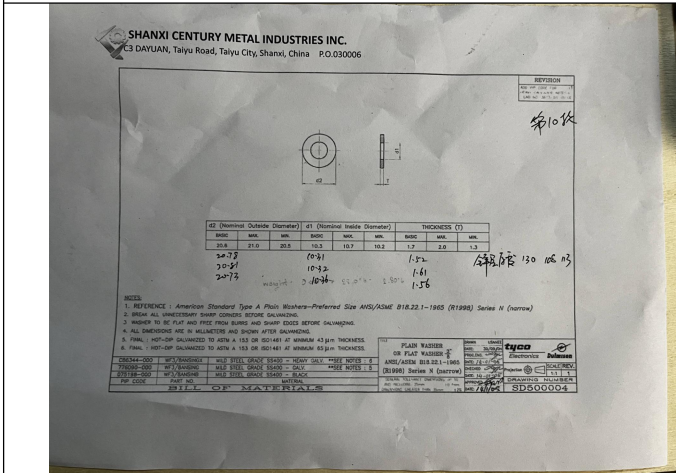
Zinc layer thickness test



Zinc layer thickness test



Zinc layer thickness test



Size records on drawing

N/A

11-004560-00B



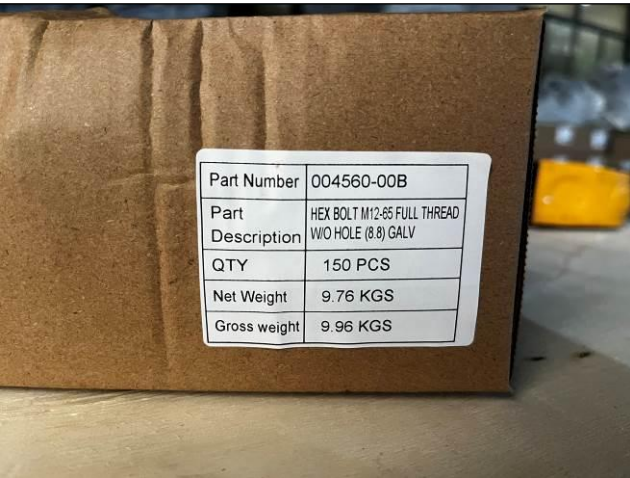
Final Random Inspection Report



packing box



packing box



Lable

| | |
|------------------|---|
| Part Number | 004560-00B |
| Part Description | HEX BOLT M12-65 FULL THREAD W/O HOLE (8.8) GALV |
| QTY | 150 PCS |
| Net Weight | 9.76 KGS |
| Gross weight | 9.96 KGS |



packing box size



packing box size



packing box size



Final Random Inspection Report



packing box size



packing box size



Gross weight



Open



5-ply



Product Details



MT-INSPECTION

Final Random Inspection Report

Report No.: MT-20260429-005



Product Details



Product Details



Product Details



Product Details



Product weight



Product weight



Final Random Inspection Report



Product weight



Product size



Product size



Product size



Product size



Product size



Final Random Inspection Report



Product size



Product size



Product size



Product size



Product size



Product size



Final Random Inspection Report



Product size



Zinc layer thickness test



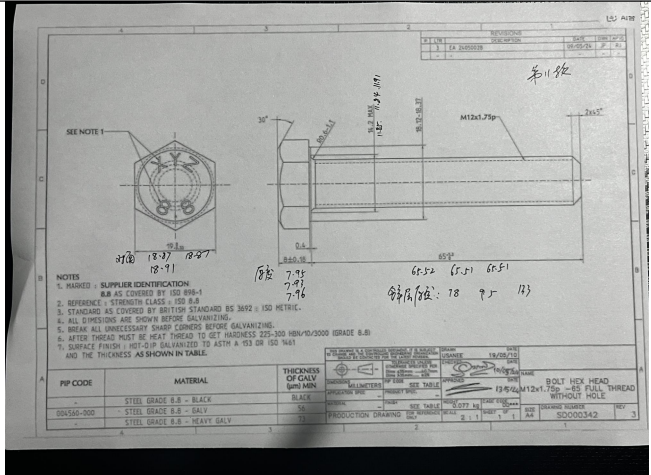
Zinc layer thickness test



Zinc layer thickness test



Zinc layer thickness test



Size records on drawing



Other photos



Factory gate



Carton storage



Carton storage



Carton storage

--The End Of Report--