



MT-INSPECTION

Final Random Inspection Report

Report No.: MT-20260427-003

GENERAL SUMMARY:

Client:	-
PO No.:	PL-0135-2043
Item No.:	Refer to the following details
Product Name:	Duvet+ pillowcase
Quantity:	2018pcs
Inspection location:	Huzhou City, Zhejiang Province
Supplier:	Zhejiang Honghua Baijin Qianyin Home Textile Technology Co., Ltd.
Date of inspection:	April 27, 2026



OVERALL CONCLUSION:

Inspection criteria	Passed	Failed	Pending	Comments
Quantity available:	-	-	×	Remark 1
Product Conformity:	-	-	×	Remark 2
Workmanship:	-	×	-	Remark 3
Test and measurement:	×	-	-	
Labeling:	-	×	-	Remark 4
Packing and shipping mark:	-	-	×	Remark 5
Result:	<input type="checkbox"/> Acceptable		<input checked="" type="checkbox"/> Reject	<input type="checkbox"/> Pending

SPECIAL REMARK:

- All the products have been produced, but not all have been packaged. Currently, the packaging of 300 boxes is expected to be completed. The exact number cannot be determined at present.
- There's a approved sample providing for reference during inspection.
- For Duvet+ pillowcase, the defects were beyond AQL 2.5/4.0 limit.
- The inner packaging of the products such as Pearl White 140x200 cm, Pearl White 200x200 cm, and Sand Brown 240x200 cm does not have labels. After receiving the on-site feedback, the factory has taken measures to rectify the situation.
- The plastic bags of the product are about 20-30 cm longer.

AVAILABLE QUANTITY:

Order No.	Item No.	Order Qty		Packed		Not finished		Not packed		Inspect Qty	
		pcs	ctn	pcs	ctn	pcs	ctn	pcs	ctn	pcs	ctn
PL-0135-2043	Pearl White 140x200cm	150	25	50%	50%	0	-	50%	50%	15	3
	Pearl White 200x200cm	198	33			0	-			19	4
	Taupe Grey 240x200cm	244	61			0	-			24	6
	Taupe Grey 2x 60x70cm	600	15			0	-			60	2
	Chocolate 140x200cm	78	13			0	-			8	2
	Chocolate 240x200cm	152	38			0	-			15	4



Final Random Inspection Report

MT-INSPECTION

Report No.: MT-20260427-003

	Black 200x200cm	102	17			0	-			10	3
	Blackl 240x200cm	152	38			0	-			15	3
	Greige 200x200cm	102	17			0	-			10	2
	Greige 2x 60x70cm	240	6			0	-			24	1
	Total:	2018	263	50%	50%	0	-	50%	50%	200	30

Single sampling plans for normal inspection

Sample Size Code Letter	Sample Size	Acceptable Quality Levels (Normal Inspection)																							
		0.065		0.10		0.15		0.25		0.40		0.65		1.0		1.5		2.5		4.0		6.5			
		Ac	Re	Ac	Re	Ac	Re	Ac	Re	Ac	Re	Ac	Re	Ac	Re	Ac	Re	Ac	Re	Ac	Re	Ac	Re		
A	2																								
B	3																								
C	5																								
D	8																								
E	13																								
F	20																								
G	32																								
H	50																								
J	80																								
K	125																								
L	200	0	1	0	1	0	1	0	1	0	1	0	1	0	1	0	1	0	1	0	1	0	1		
M	315																								
N	500																								
P	800	1	2	2	3	3	4	4	5	5	6	6	7	7	8	8	9	9	10	10	11	11	12		
Q	1250	2	3	3	4	4	5	5	6	6	7	7	8	8	9	9	10	10	11	11	12	12	13		
R	2000	3	4	4	5	5	6	6	7	7	8	8	9	9	10	10	11	11	12	12	13	13	14		

Lot Size	General Inspection Levels			Special Inspection Levels			
	I	II	III	S1	S2	S3	S4
2 to 8	A	A	B	A	A	A	A
9 to 15	A	B	C	A	A	A	A
16 to 25	B	C	D	A	A	B	B
26 to 50	C	D	E	A	B	B	C
51 to 90	C	E	F	B	B	C	C
91 to 150	D	F	G	B	B	C	D
151 to 280	E	G	H	B	C	D	E
281 to 500	F	H	J	B	C	D	E
501 to 1,200	G	J	K	C	C	E	F
1,201 to 3,200	H	K	L	C	D	E	G
3,201 to 10,000	J	L	M	C	D	F	G
10,001 to 35,000	K	M	N	C	D	F	H
35,001 to 150,000	L	N	P	D	E	G	J
150,001 to 500,000	M	P	Q	D	E	G	J
500,001 and over	N	Q	R	D	E	H	K

Inspection standard: ANSI/ASQC Z1.4-2003 Sampling plan: <i>Single, Normal</i> Inspection level: II AQL: Critical: Not Allowed.	1646 Pork Rollz CR Lids	Sample Size: 200pcs		
		Critical	Major	Minor
	AQL:	0	1.5	2.5
	Defects Found:	0	2	21
	Max. Allowed:	0	7	14

WORKMANSHIP:						
Item No.	Sample size	Defective rate	Defects Description	Cri	Maj	Min
Pearl White 140x200cm	15	13.33%	Thread end	0	0	2
		6.67%	Stain	0	0	1

This reflects our findings at the time and place in inspection. This inspection has been carried out to the best of our knowledge and ability and our responsibility is limited to the exercise of reasonable one. This report does not relieve the sellers from their contractual obligations nor prejudice buyer's right for compensation for any apparent and / or hidden defects not detected during our random inspection or occurring thereafter. This report does not evidence shipment.



MT-INSPECTION

Final Random Inspection Report

Report No.: MT-20260427-003

Pearl White 200x200cm	19	21.05%	Thread end	0	0	4
Taupe Grey 240x200cm	24	4.17%	Poor stitching of trademark car	0	0	1
		4.17%	Thread end	0	0	1
Taupe Grey 2x 60x70cm	60	1.67%	Poor stitching of trademark car	0	0	1
		1.67%	Thread end	0	0	1
Chocolate 240x200cm	15	6.67%	Fold	0	0	1
		6.67%	Thread end	0	0	1
Black 200x200cm	10	10%	Thread end	0	0	1
Blackl 240x200cm	15	13.33%	Thread end	0	0	2
		6.66%	Opening	0	1	0
Greige 200x200cm	10	40%	Thread end	0	0	4
Greige 2x 60x70cm	24	4.16%	Poor stitching	0	1	0
		4.16%	Damaged washing label	0	0	1
Total defect:				0	2	21
Allowed:				0	7	14
Result:				Fail		

Defect Pictures:

Item No: Pearl White 140x200cm



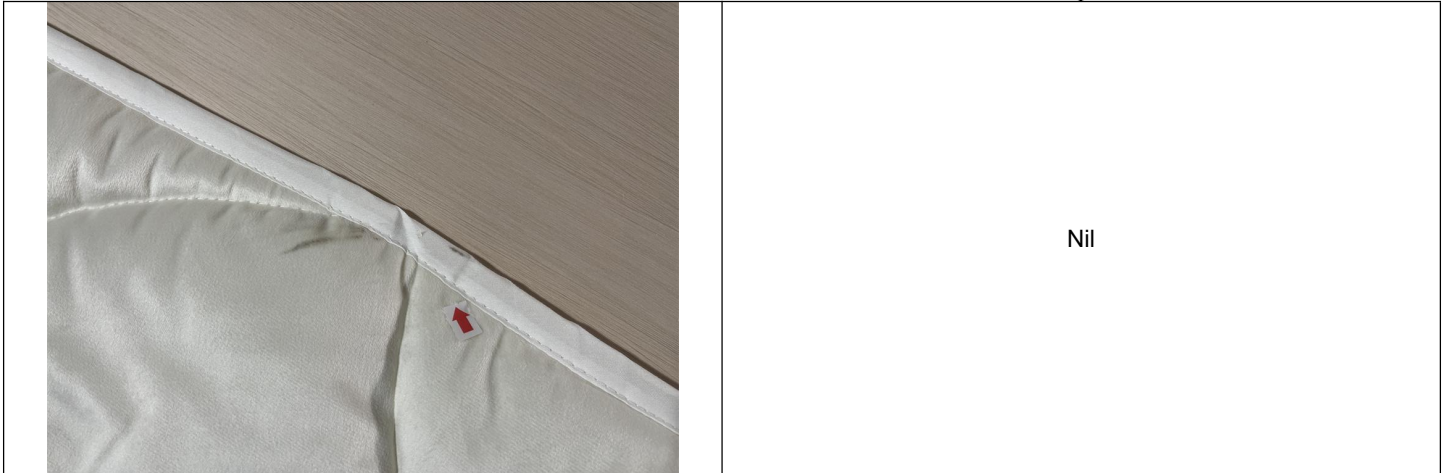
Thread end-Minor



Thread end-Minor



Final Random Inspection Report



Stain-Minor

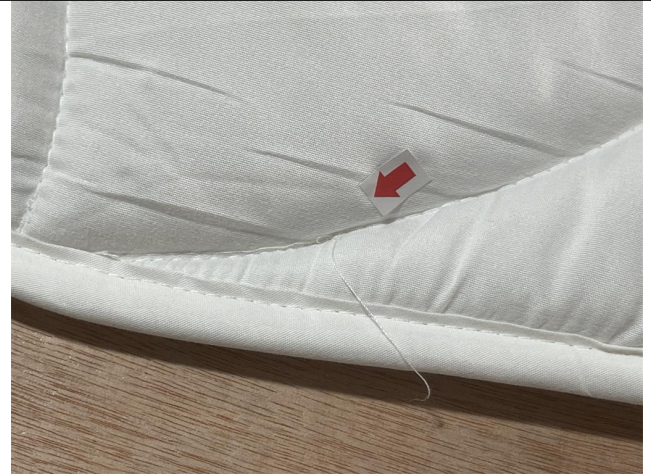
Nil

Nil

Item No: Pearl White 200x200cm



Thread end-Minor



Thread end-Minor



Thread end-Minor



Thread end-Minor

Item No: Taupe Grey 240x200cm



Poor stitching of trademark car-Minor

Thread end-Minor

Item No: Taupe Grey 2x 60x70cm



Poor stitching of trademark car-Minor

Thread end-Minor

Item No: Chocolate 240x200cm



Fold-Minor

Thread end-Minor

Item No: Black 200x200cm



MT-INSPECTION

Final Random Inspection Report

Report No.: MT-20260427-003

	<p>Nil</p>
<p>Thread end-Minor</p>	
<p>Item No: Blackl 240x200cm</p>	
	
<p>Opening-Major</p>	<p>Thread end-Minor</p>
	<p>Nil</p>
<p>Thread end-Minor</p>	<p>Nil</p>
<p>Item No: Greige 200x200cm</p>	



Final Random Inspection Report



Thread end-Minor



Thread end-Minor



Thread end-Minor



Thread end-Minor

Item No: Greige 2x 60x70cm



Damaged washing label-Minor



Poor stitching-Major



Final Random Inspection Report

PRODUCT CONFORMITY & ON-SITE TESTS

Check Points & On-site Tests	Sample Size	Criteria	Result & Remarks
Visual Check (Style, Appearance, Material, Color)	All Sample size	a. Conformance to Style / Appearance / Material / Color compared against: <input type="checkbox"/> Client's / <input type="checkbox"/> Factory's ref. sample. <input checked="" type="checkbox"/> No ref. sample for comparison. (N.B.: Provide details in comment section if 2 or more color shades and/or any color variation is found.) b. Free of nick, burrs, pits, sharp point or any other defects which may affect the product serviceability. c. Finish/ coating is smooth and even without streaks, blisters, wrinkles, or runs. d. Good overall appearance with good alignment of components.	Pending Remark 2
Color Fastness Test	S-2	Dry/wet white cloth rubbing (dry white paper substitute if white cloth is not available)	PASS
Color shade check	S-2	No color discrepancy	PASS
Smell test	All Sample size	No pungent smell come out.	PASS
Code scanning test	S-2	check the barcodes all on packing and product by barcode scanner, If the barcode(s) couldn't be read out in 5s, the test should be rejected	PASS
Pull test	S-2	Test whether the product is sturdy.	PASS

PACKING AND ACCESSORIES:

Item No.:	Master shipper (pcs/ctn)	Carton size L×W×H (cm)	G.W (Kg)	N.W (Kg)	Color box size L×W×H (cm)	Color box weight(g)	Carton Barcode	Color box Barcode
-	-	-	-	-	-	-	-	-

PRODUCT SPECIFICATION:

Item No.:	Check point	Client Spec.	Ref. Sample	Sample 1#	Sample 2#	Sample 3 #
Pearl White 140x200cm	Size check(cm)	140x200cm	-	139.5x199.5	139.5x199.5	139.5x199.5
	Weight check(kg)	-	-	1.90	1.90	1.90
Pearl White 200x200cm	Size check(cm)	200x200cm	-	201x198	201x199	201x198
	Weight check(kg)	-	-	2.80	2.80	2.80
Taupe Grey 240x200cm	Size check(cm)	240x200cm	-	239x201.5	239x201	239x201.5
	Weight check(kg)	-	-	3.35	3.35	3.35
Taupe Grey 2x 60x70cm	Size check(cm)	60x70cm	-	60x70	60x70	60x70
	Weight check(kg)	-	-	0.138	0.138	0.138
Chocolate 140x200cm	Size check(cm)	140x200cm	-	141x200	141x200	141x200
	Weight check(kg)	-	-	1.90	1.90	1.90
Chocolate 240x200cm	Size check(cm)	240x200cm	-	237x200	238x200	238x200
	Weight check(kg)	-	-	3.40	3.40	3.40
Black 200x200cm	Size check(cm)	200x200cm	-	199x199.5x	199x199	200X199
	Weight check(kg)	-	-	2.80	2.80	2.80



MT-INSPECTION

Final Random Inspection Report

Report No.: MT-20260427-003

Blackl 240x200cm	Size check(cm)	240x200cm	-	239x200.5	239x200	240x200
	Weight check(kg)	-	-	3.25	3.25	3.25
Greige 200x200cm	Size check(cm)	200x200cm	-	199.5x200	199x200	200x200
	Weight check(kg)	-	-	2.65	2.65	2.65
Greige 2x 60x70cm	Size check(cm)	60x70cm	-	60.5x69.5	60x70	60.5x70.5
	Weight check(kg)	-	-	0.149	0.149	0.148

EXPORT CARTON INFORMATION:

Carton:	New export carton	Yes	Sealing:	Opaque gummed tape	-
Fastening:	Metal staples	No		Transparent gummed tape	Yes
Strapping:	Nylonx2	No		Paper tape	-
Material:	Ply of corrugated paper	5ply	Others:	-	

Product photo show:

Item: Pearl White 140x200cm

Carton view	Shipping mark
Shipping mark	Shipping mark



MT-INSPECTION

Final Random Inspection Report

Report No.: MT-20260427-003



Package view



Package view



Package view



Package view



Package view



Package view



MT-INSPECTION

Final Random Inspection Report

Report No.: MT-20260427-003



Package view



Package view



Package view



Product view



Product view



Product view



MT-INSPECTION

Final Random Inspection Report

Report No.: MT-20260427-003



Product view



Product view



Product view



Product view



Product view



Product view



Final Random Inspection Report

MT-INSPECTION

Report No.: MT-20260427-003



Weight view



Weight view



Size view



Size view



Size view



Size view

Item: Pearl White 200x200cm



Final Random Inspection Report

MT-INSPECTION

Report No.: MT-20260427-003



Carton view



Shipping mark



Shipping mark



Shipping mark



Package view



Package view



Final Random Inspection Report



Package view



Package view



Package view



Package view



Product view



Product view



MT-INSPECTION

Final Random Inspection Report

Report No.: MT-20260427-003



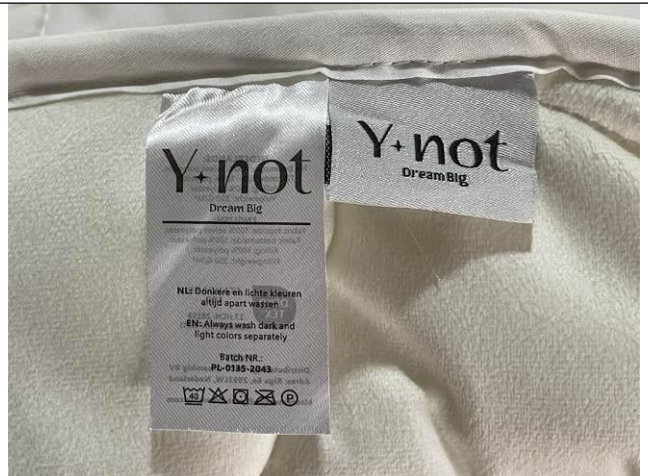
Product view



Product view



Product view



Product view



Size view



Size view



MT-INSPECTION

Final Random Inspection Report

Report No.: MT-20260427-003



Size view



Size view



Weight view



Weight view

Item: Taupe Grey 240x200cm



Carton view



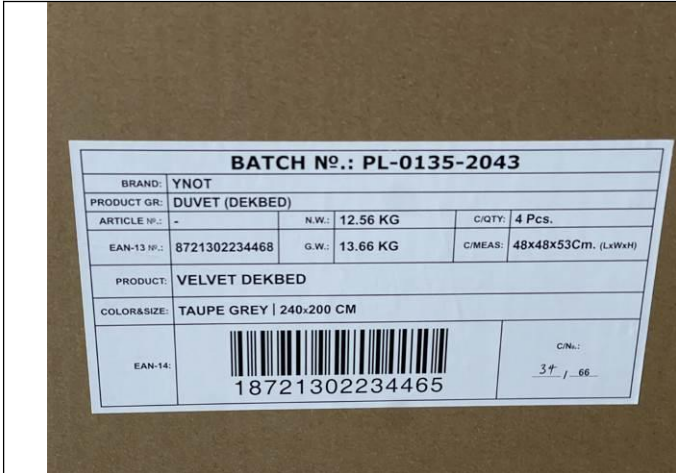
Shipping mark



MT-INSPECTION

Final Random Inspection Report

Report No.: MT-20260427-003



Shipping mark



Shipping mark



Package view



Package view



Package view



Package view



Final Random Inspection Report

MT-INSPECTION

Report No.: MT-20260427-003



Package view



Package view



Product view



Product view



Product view



Product view



Final Random Inspection Report



Product view



Product view



Size view



Size view



Size view



Size view



Final Random Inspection Report

MT-INSPECTION

Report No.: MT-20260427-003



Weight view



Weight view

Item: Taupe Grey 2x 60x70cm



Carton view



Shipping mark



Shipping mark



Shipping mark



Final Random Inspection Report



Package view



Package view



Package view



Package view



Package view




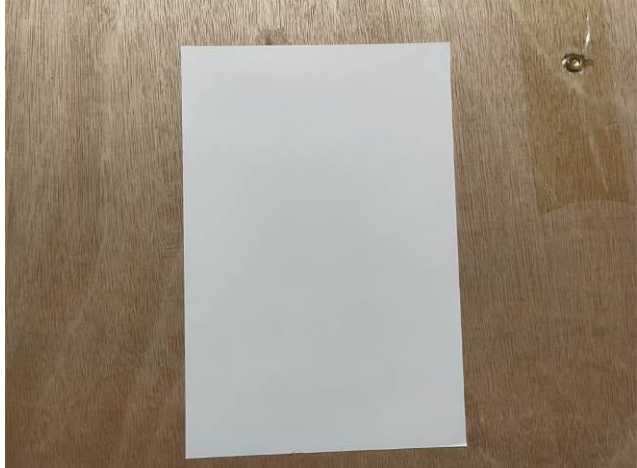



Package view



MT-INSPECTION

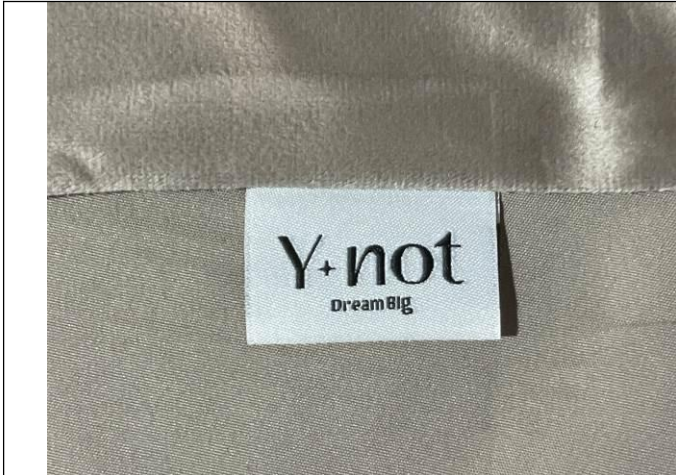
Final Random Inspection Report

Report No.: MT-20260427-003

	
<p>Package view</p>	<p>Package view</p>
	
<p>Product view</p>	<p>Product view</p>
	
<p>Product view</p>	<p>Product view</p>



Final Random Inspection Report



Product view



Product view



Product view



Product view



Size view



Size view



MT-INSPECTION

Final Random Inspection Report

Report No.: MT-20260427-003



Size view



Size view



Weight view



Weight view

Item: Chocolate 140x200cm



Carton view



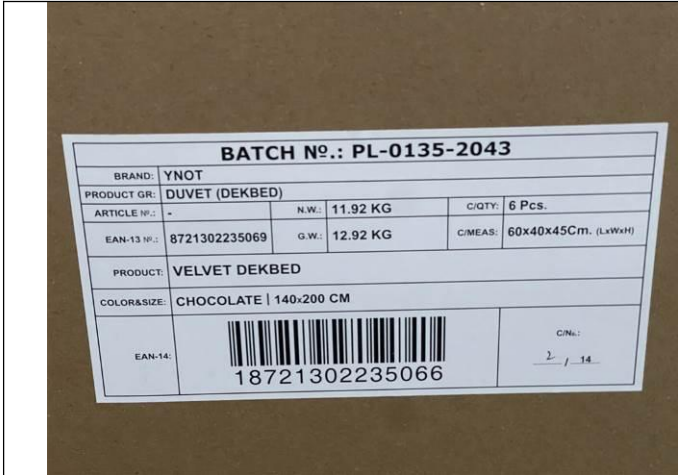
Shipping mark



MT-INSPECTION

Final Random Inspection Report

Report No.: MT-20260427-003



Shipping mark



Shipping mark



Package view



Package view



Package view



Package view



MT-INSPECTION

Final Random Inspection Report

Report No.: MT-20260427-003



Package view



Package view



Package view



Product view



Product view



Product view



MT-INSPECTION

Final Random Inspection Report

Report No.: MT-20260427-003



Product view



Product view



Product view



Product view



Size view



Size view



MT-INSPECTION

Final Random Inspection Report

Report No.: MT-20260427-003



Size view



Size view



Weight view



Weight view

Item: Chocolate 240x200cm



Carton view



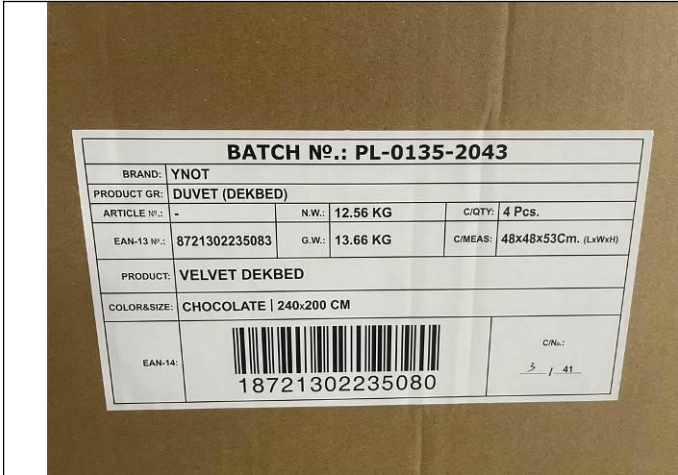
Shipping mark



MT-INSPECTION

Final Random Inspection Report

Report No.: MT-20260427-003



Shipping mark



Shipping mark



Package view



Package view



Package view



Package view



Final Random Inspection Report



Package view



Package view



Package view



Package view



Package view



Product view



MT-INSPECTION

Final Random Inspection Report

Report No.: MT-20260427-003



Product view



Product view



Product view



Product view



Product view



Product view



MT-INSPECTION

Final Random Inspection Report

Report No.: MT-20260427-003



Size view



Size view



Size view



Size view



Weight view



Weight view

Item: Black 200x200cm



MT-INSPECTION

Final Random Inspection Report

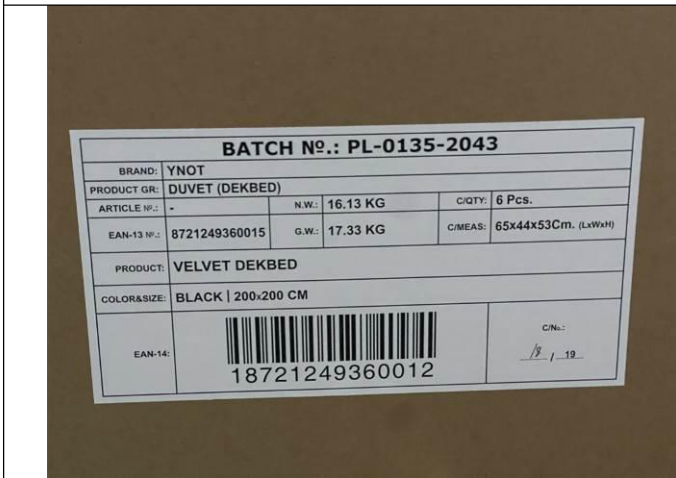
Report No.: MT-20260427-003



Carton view



Shipping mark



Shipping mark



Shipping mark



Package view



Package view



MT-INSPECTION

Final Random Inspection Report

Report No.: MT-20260427-003



Package view



Package view



Package view



Package view



Package view



Package view



MT-INSPECTION

Final Random Inspection Report

Report No.: MT-20260427-003



Package view



Product view



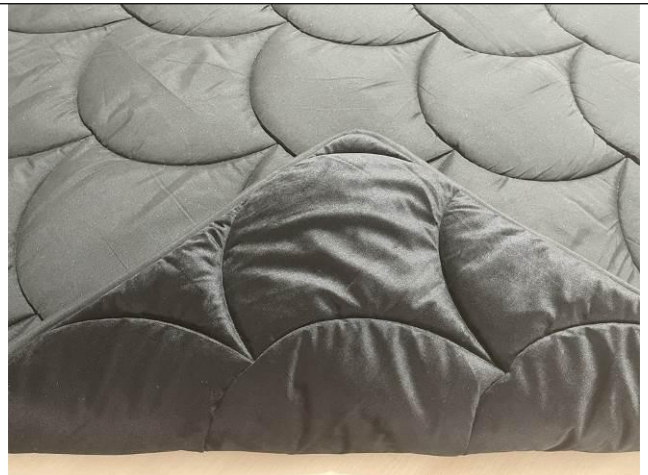
Product view



Product view



Product view



Product view



MT-INSPECTION

Final Random Inspection Report

Report No.: MT-20260427-003



Product view



Product view



Size view



Size view



Size view



Size view



MT-INSPECTION

Final Random Inspection Report

Report No.: MT-20260427-003



Weight view



Weight view

Item: Blackl 240x200cm



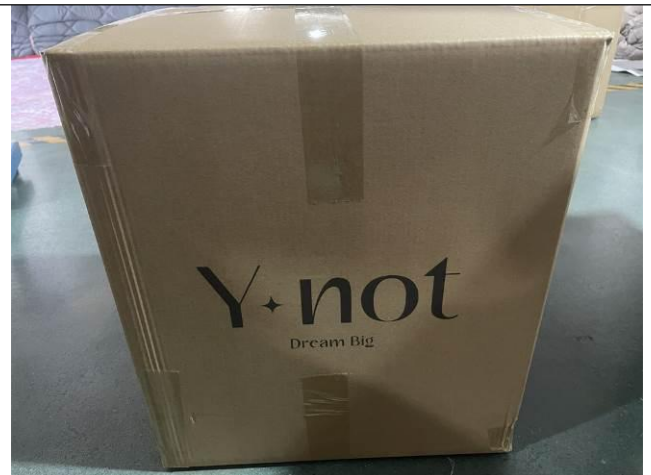
Carton view



Shipping mark



Shipping mark



Shipping mark



MT-INSPECTION

Final Random Inspection Report

Report No.: MT-20260427-003



Package view



Package view



Package view



Package view



Package view



Package view



MT-INSPECTION

Final Random Inspection Report

Report No.: MT-20260427-003



Package view



Package view



Product view



Product view



Product view



Product view



Final Random Inspection Report



Product view



Product view



Size view



Size view



Size view



Size view



MT-INSPECTION

Final Random Inspection Report

Report No.: MT-20260427-003



Weight view



Weight view

Item: Greige 200x200cm



Carton view



Shipping mark



Shipping mark



Shipping mark



Final Random Inspection Report



Package view



Package view



Package view



Package view



Package view



Package view



MT-INSPECTION

Final Random Inspection Report

Report No.: MT-20260427-003



Package view



Package view



Product view



Product view



Product view



Product view



Final Random Inspection Report



Product view



Product view



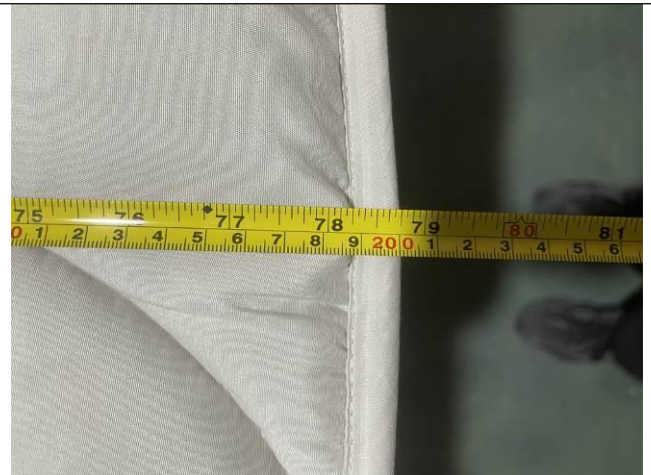
Size view



Size view



Size view



Size view



MT-INSPECTION

Final Random Inspection Report

Report No.: MT-20260427-003



Weight view



Weight view

Item: Greige 2x 60x70cm



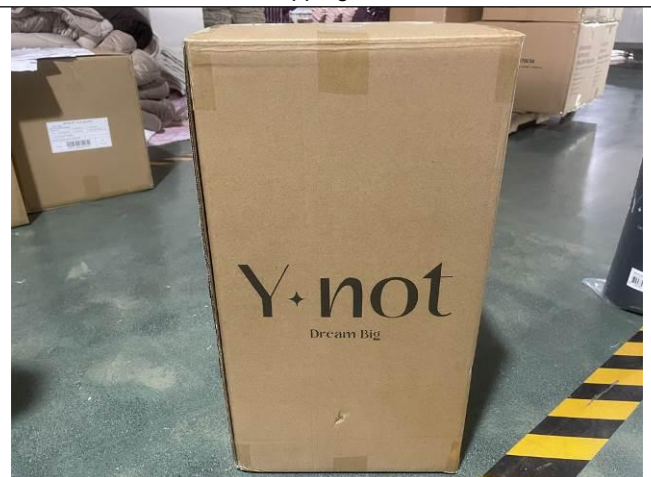
Carton view



Shipping mark



Shipping mark



Shipping mark

BATCH No.: PL-0135-2043				
BRAND:	YNOT			
PRODUCT GR:	PILLOWCASES (SLO)			
ARTICLE No.:		C/QT:	40 Pcs.	
EAN-13 No.:	8721302234789	N.W.:	13.44 KG	
		G.W.:	14.07 KG	
PRODUCT:	VELVET 2 PACK SLOPEN			
COLOR&SIZE:	GREIGE 2X 60x70CM			
EAN-14:	 18721302234786		C/No.:	217



Final Random Inspection Report



Package view



Package view



Package view



Package view



Package view



Package view



Package view



Product view



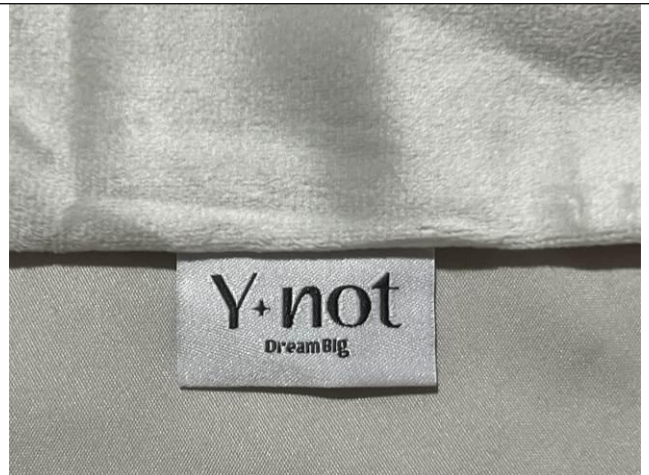
Product view



Product view



Product view



Product view



Final Random Inspection Report



Product view



Product view



Size view



Size view



Size view



Size view



Weight view



Weight view

Measurement and Test



Color shade check



Color shade check



Color shade check



Color shade check



MT-INSPECTION

Final Random Inspection Report

Report No.: MT-20260427-003



Color shade check



Color shade check



Color shade check



Color shade check



Color shade check



Color shade check



Final Random Inspection Report

MT-INSPECTION

Report No.: MT-20260427-003



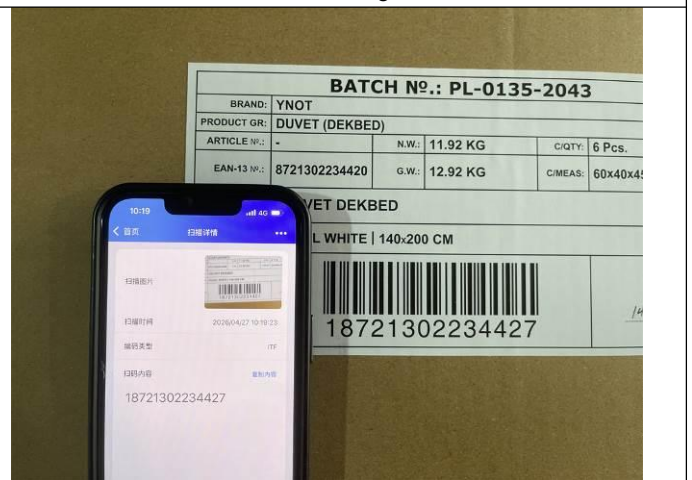
Code scanning test



Code scanning test



Code scanning test



Code scanning test



Code scanning test



Code scanning test



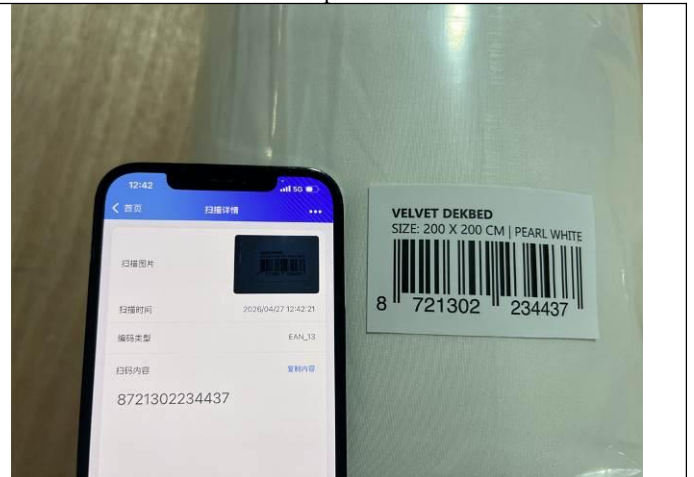
Final Random Inspection Report

MT-INSPECTION

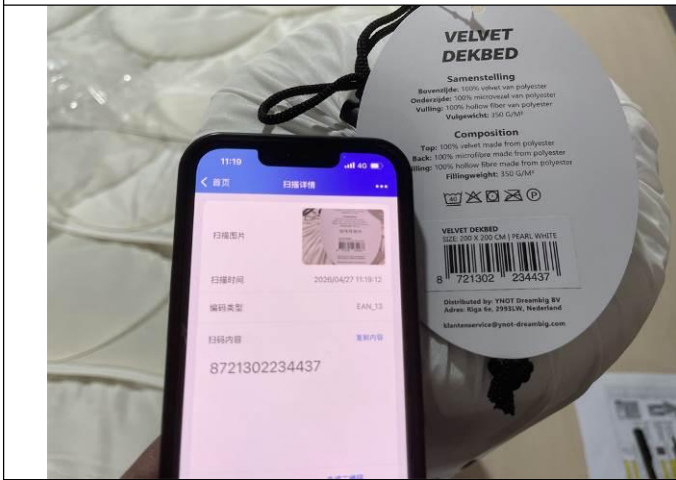
Report No.: MT-20260427-003



Code scanning test



Code scanning test



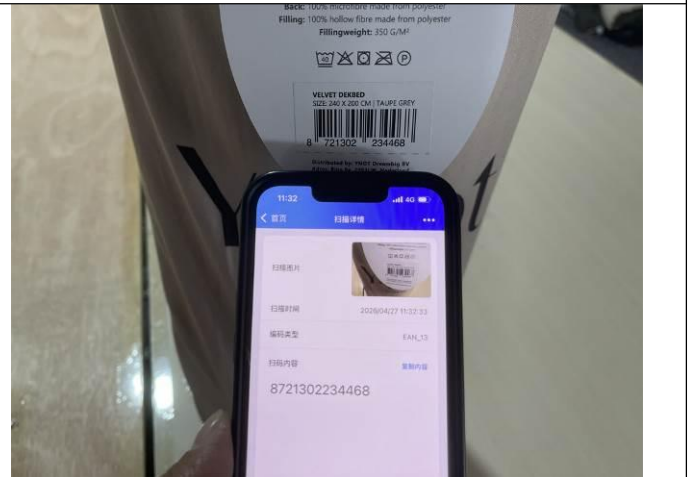
Code scanning test



Code scanning test



Code scanning test



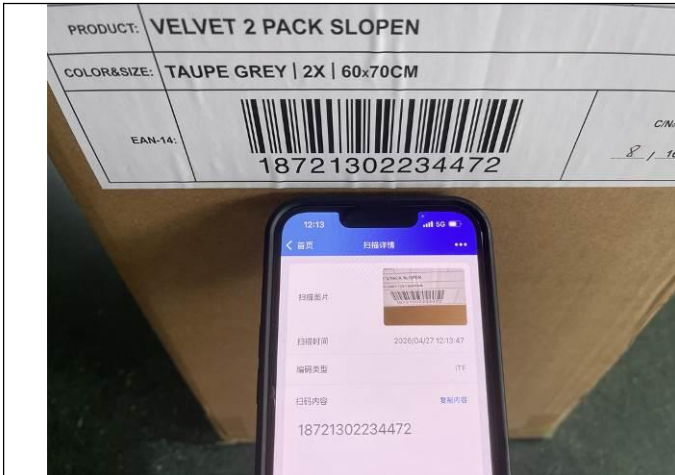
Code scanning test



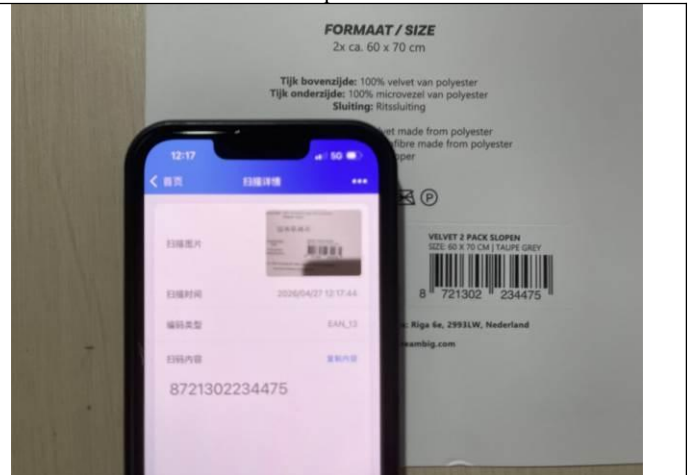
Final Random Inspection Report

MT-INSPECTION

Report No.: MT-20260427-003



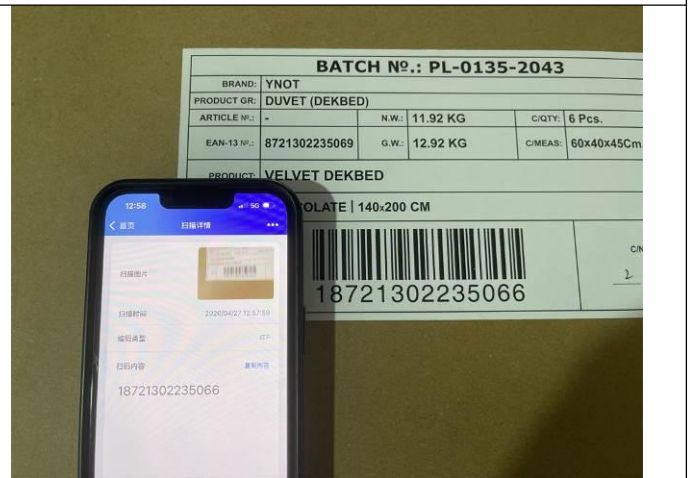
Code scanning test



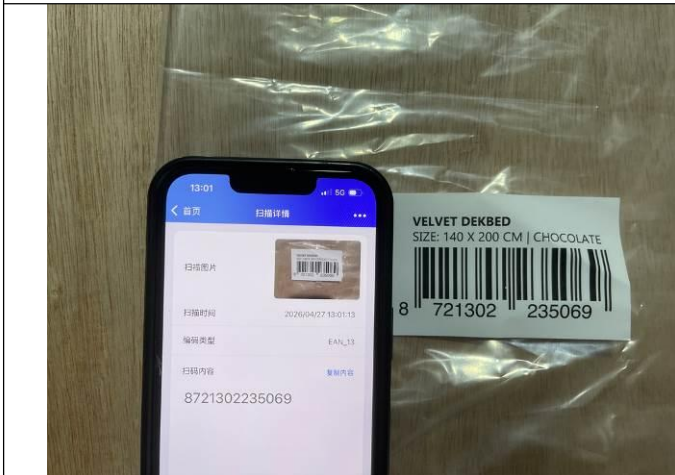
Code scanning test



Code scanning test



Code scanning test



Code scanning test



Code scanning test



Final Random Inspection Report

MT-INSPECTION

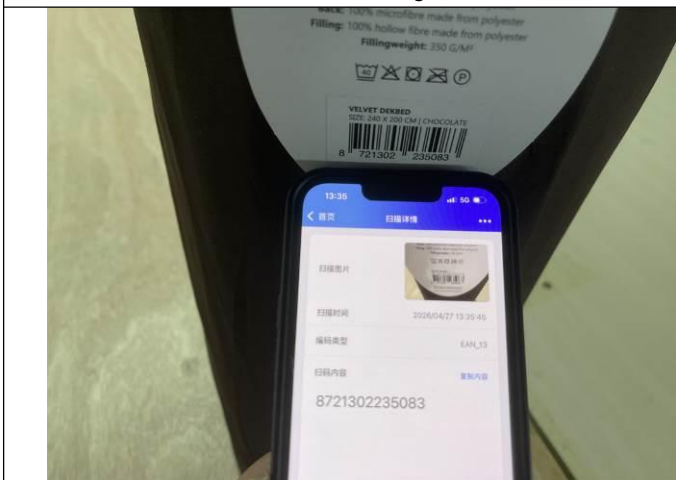
Report No.: MT-20260427-003



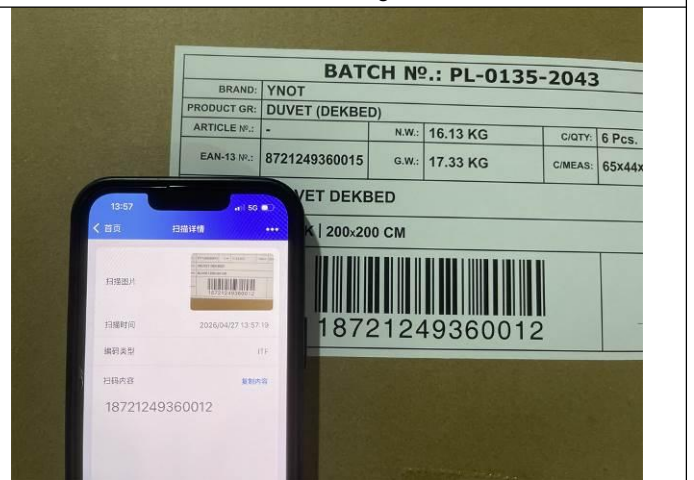
Code scanning test



Code scanning test



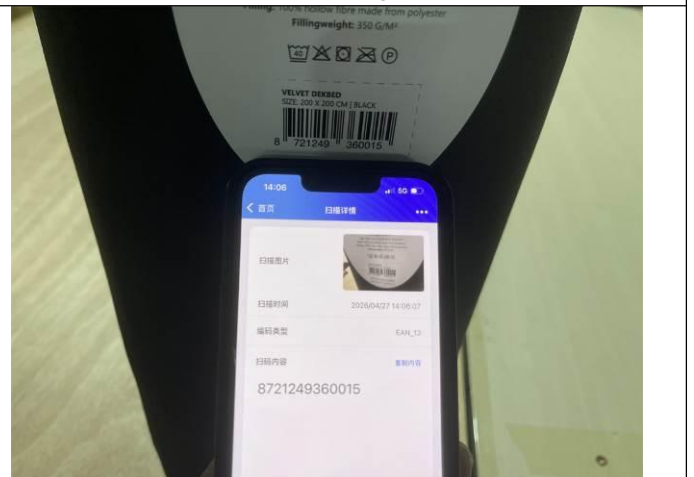
Code scanning test



Code scanning test



Code scanning test



Code scanning test



MT-INSPECTION

Final Random Inspection Report

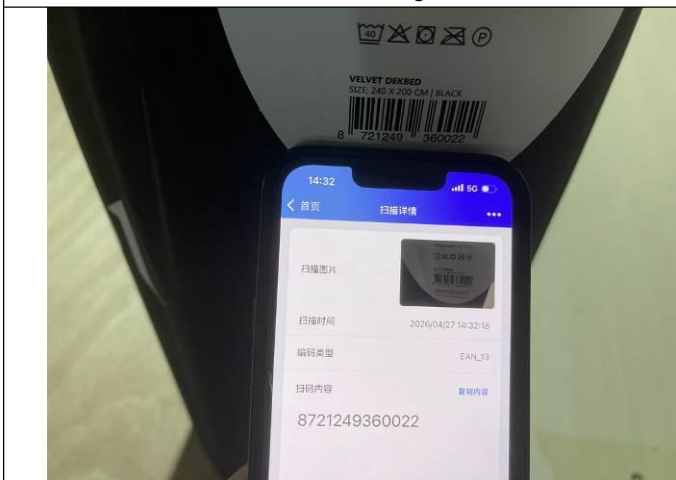
Report No.: MT-20260427-003



Code scanning test



Code scanning test



Code scanning test



Code scanning test



Code scanning test



Code scanning test



Final Random Inspection Report

<p>Color Fastness Test</p>	<p>Color Fastness Test</p>
<p>Pull test</p>	<p>Pull test</p>
	<p>Nil</p>
<p>Smell test</p>	<p>Nil</p>



Other photos



Factory gate



Carton storage



Carton storage



Inspection site

--The End Of Report--