

# Previo en origen



# Container Loading Inspection Report

## GENERAL DESCRIPTION



### Client Name:

Product description: Windows,fireplace,garage door

PO NO : /

Letter of credit No : /

Loading location : Foshan city,Guangdong China

Destination country : /

Date/time of loading : May 4<sup>th</sup>, 2026

Inspection date : May 4<sup>th</sup>, 2026

### Supplier:

Factory: Foshan EMD doors and windows factory

Inspector: Steven Lin

Contact: Cs

## QUANTITY CHECK

	Passed	Failed	Pending	N/A	Remark*
A. Quantity & Assortment	✓				
B. Condition of Container(s)	✓				
C. Condition of export cartons	✓				
D. Shipping marks			✓		1
E. Client special requirement				✓	

\*Refer to Part REMARKS to see detail

## OVERALL INSPECTION RESULT

### REMARKS

#### PROBLEMATIC REMARKS

1, No marking and label information provided, based on actual finding, pls see pictures.

#### SAMPLE COLLECTION RECORD

No sample collection record.

Note: **1.** This report reflects our findings at the time and the place of inspection based on random samples selected. **2.** This inspection was carried out to the best of our knowledge and abilities, and our responsibility is limited to the exercise of reasonable one. **3.** This report does not relieve the sellers from their contractual obligations nor does it prejudice buyer's right for compensation for any apparent and/or hidden defects not detected during our inspection or occurring thereafter. **4.** This report does not evidence shipment

Please find our inspections details from next page (Section A - G)

### A. QUANTITY & ASSORTMENT

Item/Style/SKU No.	Product Description	Order Qty (pcs)	Order Qty (cartons)	Declared Qty of Export Pieces	Declared Qty of Export Carton
Screws	Screws	1000	1	1000	1
Windows NO#7	Windows	11	1	11	1
Windows NO#11	Windows	4	1	4	1
Windows NO#12	Windows	13	1	13	1
FIREPLACE 3/3	FIREPLACE	1	1	1	1
Windows NO#8	Windows	9	1	9	1
Windows NO#14	Windows	7	1	7	1
Windows NO#10	Windows	8	1	8	1
Windows NO#3	Windows	6	1	6	1
Windows NO#21	Windows	5	1	5	1
Windows NO#9	Windows	5	1	5	1
Windows NO#6	Windows	7	1	7	1
garage door	garage door	1	1	1	1
garage door	garage door	1	1	1	1
FIREPLACE 1/3	FIREPLACE	1	1	1	1
FIREPLACE 2/3	FIREPLACE	1	1	1	1
Windows frame	Windows	6	1	6	1
<b>Total:</b>		<b>1086</b>	<b>22</b>	<b>1086</b>	<b>22</b>
<b>Result:</b>	PASSED				
<b>Remark:</b>	-				

### B. CONDITION OF CONTAINER(S)

	<b>PASSED</b>
	<b>FAILED</b>
	<b>OTHER</b>
<b>Result:</b>	PASSED
<b>Remark:</b>	-

### C. CONDITION OF EXPORT CARTONS

<b>✓</b>	<b>PASSED</b>								
	<b>FAILED</b>								
	<b>OTHER</b>								
	<b>Result:</b>	PASSED							
	<b>Remark:</b>	-							

### D. CONDITION OF LOADING LOCATION

<b>Loading Location:</b>		<b>Factory</b>	<b>✓</b>	<b>Warehouse</b>		<b>Other:</b>			
<b>Weather:</b>	<b>✓</b>	<b>Rainy</b>		<b>Sunny</b>		<b>Snowy:</b>		<b>Other:</b>	
<b>Sheltered:</b>	<b>✓</b>	<b>Yes</b>		<b>No</b>					

### E. SHIPPING MARKS

Shipping Marks (on 2 side):	Pending
Side Marks (on 2 side):	Pending
Inner Box Marks (on/side)	Pending
<b>Result:</b>	Pending
<b>Remark:</b>	No marking and label information provided, based on actual finding, pls see pictures.

### F. CONTAINER DETAILS

1 <sup>st</sup> Container Type	Container No.	Seal No.	Loaded Cargo		
			Item/ Style No.	Loaded Pieces	Loaded Carton
40HC	HMMU4221777	25H1266719	Screws	1000	1
			Windows NO#7	11	1
			Windows NO#11	4	1
			Windows NO#12	13	1
			FIREPLACE 3/3	1	1
			Windows NO#8	9	1
			Windows NO#14	7	1
			Windows NO#10	8	1
			Windows NO#3	6	1
			Windows NO#21	5	1
			Windows NO#9	5	1
			Windows NO#6	7	1
			garage door	1	1
			garage door	1	1
			FIREPLACE 1/3	1	1
			FIREPLACE 2/3	1	1
Windows frame	6	6			
<b>Total:</b>			<b>1086</b>	<b>22</b>	

### G. CLIENT SPECIAL REQUIREMENT

Client Requirements		Result
1	Shipping Marks	Pending
2	Label And Barcode	Pending
3	Product color, size	N/A
Result:		Pending
Remark:		-

### PHOTOS

Photos of items:screws



Carton View

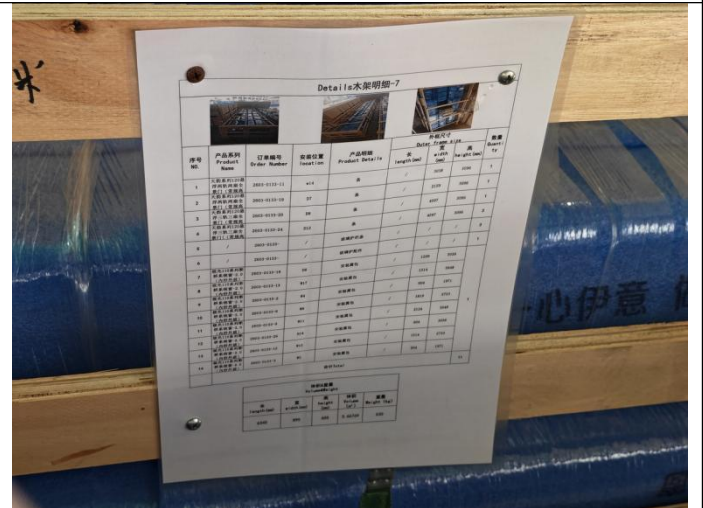


Shipping Mark

Photos of items:Windows NO#7



Carton View



Shipping Mark

Photos of items:Windows NO#11



Carton View



Shipping Mark

Photos of items:Windows NO#12



Shipping Mark



Shipping Mark

Photos of items:FIREPLACE 3/3



Carton View

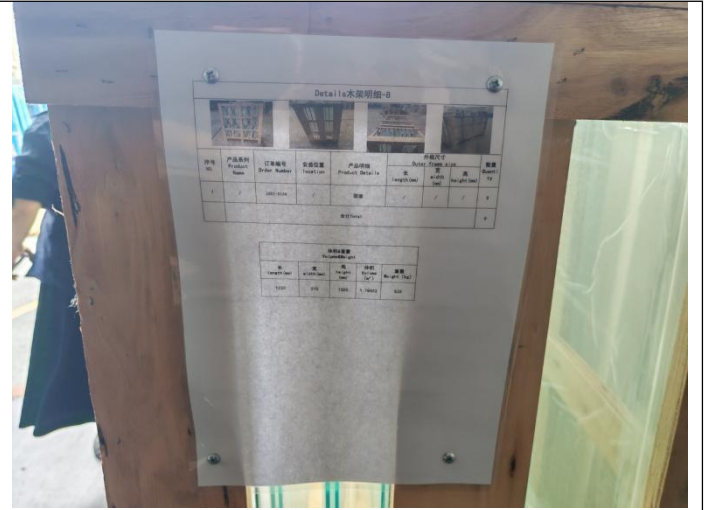


Shipping Mark

Photos of items:Windows NO#8



Carton View



Shipping Mark

Photos of items:Windows NO#14



Carton View



Shipping Mark

Photos of items:Windows NO#10



Carton View



Shipping Mark

Photos of items:Windows NO#3



Carton View

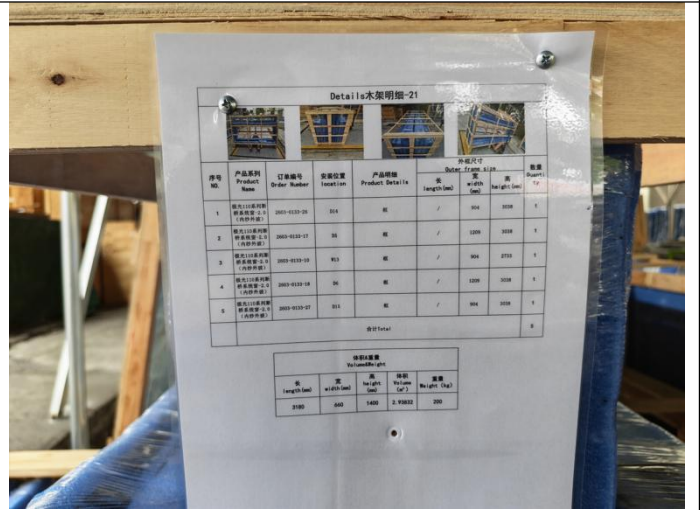


Shipping Mark

Photos of items:Windows NO#21



Carton View



Shipping Mark

Photos of items:Windows NO#9



Carton View

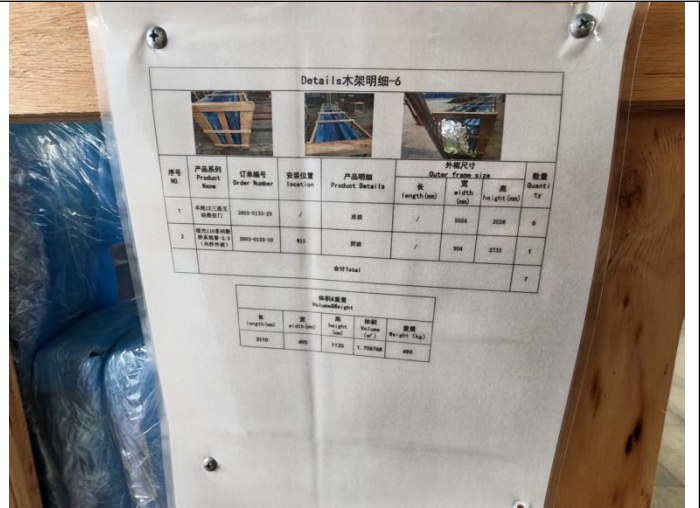


Shipping Mark

Photos of items:Windows NO#6



Carton View

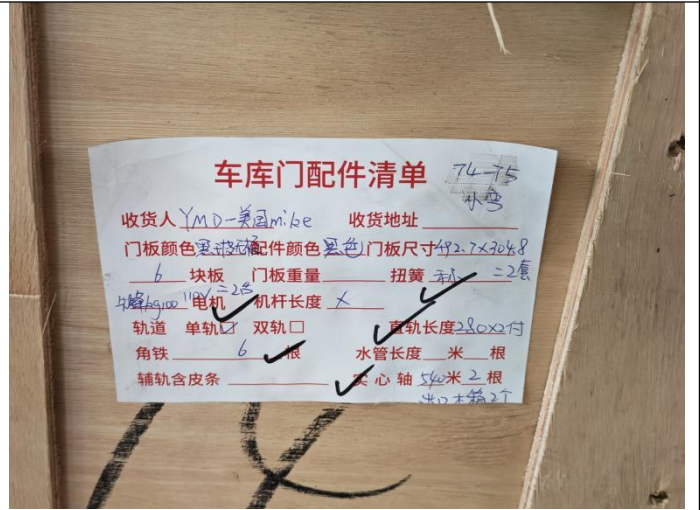


Shipping Mark

Photos of items:garage door



Carton View

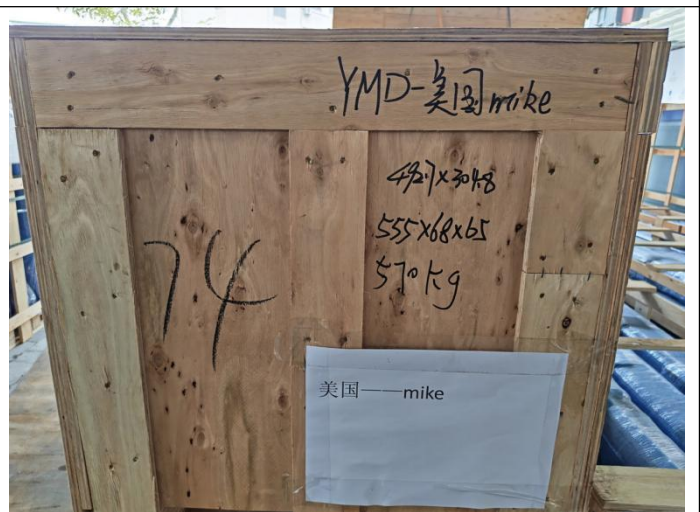


Shipping Mark

Photos of items:garage door



Carton View



Shipping Mark

Photos of items:FIREPLACE 2/3



Carton View



Shipping Mark

Photos of items: FIREPLACE 1/3



Carton View



Shipping Mark

Photos of items: Windows frame



Carton View



Shipping Mark

Customer	美居-Queena	Frame 1.1
Ord. No.	2603-0133	SN13
Size	1514*3648	
Color	In. Skin Black Out. Skin Black	
Note	美国mike/W17//三周带安装翼底部不装(装好出厂), 英文标签, 外贸单, 包装方式特定, 验货整柜出	
 2280671405858		

Shipping Mark

Customer	美居-Queena	Frame 1.1
Ord. No.	2603-0133	SN5
Size	1819*2733	
Color	In. Skin Black Out. Skin Black	
Note	美国mike/W7//四周带安装翼(装好出厂), 英文标签, 外贸单, 包装方式特定, 验货整柜出	
 8280671804563		

Shipping Mark

Customer	美居-Queena	Frame 1.1
Ord. No.	2603-0133	SN9
Size	2124*3648	
Color	In. Skin Black Out. Skin Black	
Note	美国mike/W11//27A线, 三周带安装翼底部不装(装好出厂), 英文标签, 外贸单, 包装方式特定, 验货整柜出	
 3280671708743		

Shipping Mark

Customer	美居-Queena	Frame 1.1
Ord. No.	2603-0133	SN6
Size	1819*2733	
Color	In. Skin Black Out. Skin Black	
Note	美国mike/W8//四周带安装翼(装好出厂), 英文标签, 外贸单, 包装方式特定, 验货整柜出	
 4280671702580		

Shipping Mark

Customer	美居-Queena	Frame 1.1
Ord. No.	2603-0133	SN12
Size	1514*2733	
Color	In. Skin Black Out. Skin Black	
Note	美国mike/W15//四周带安装翼(装好出厂), 英文标签, 外贸单, 包装方式特定, 验货整柜出	
 1280671808830		

Shipping Mark

N/A

Photos of loading container#HMMU4221777



The container view



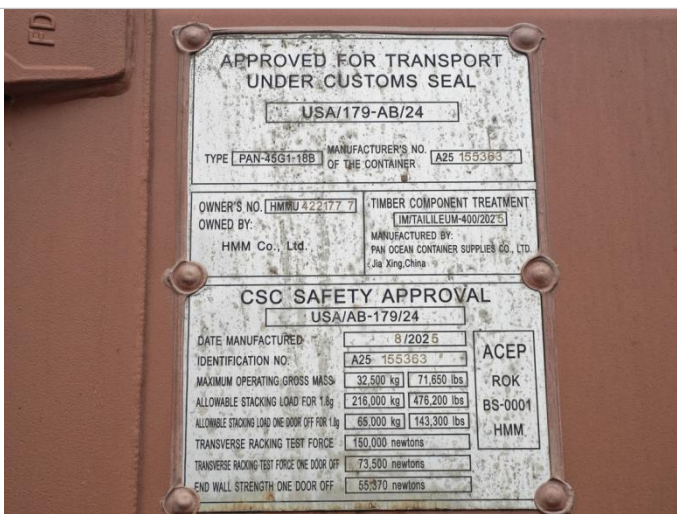
The container view



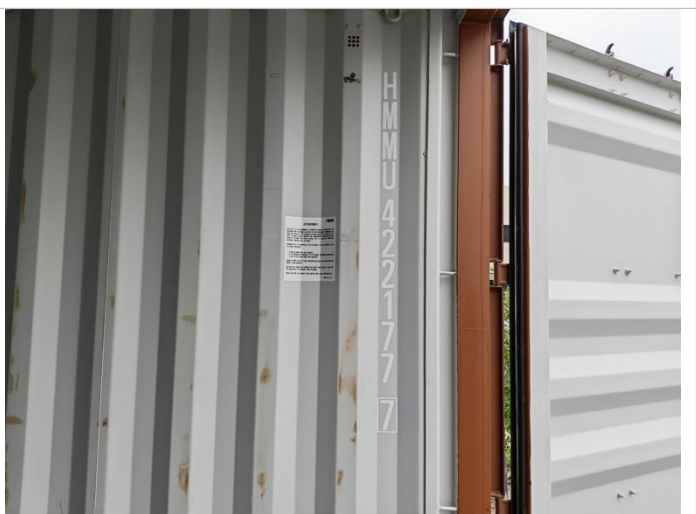
The container view



The container view



The container view



The container No:HMMU4221777



The empty container view



The empty container view



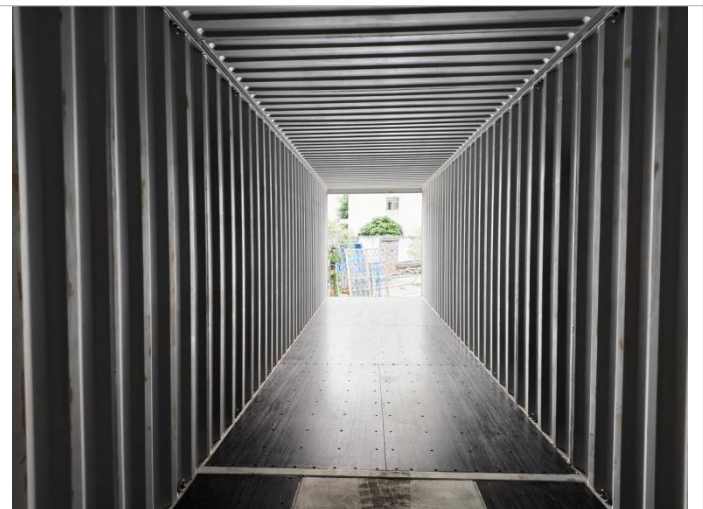
The empty container view



The empty container view



Light leakage check



The empty container view



The empty container view



The empty container view



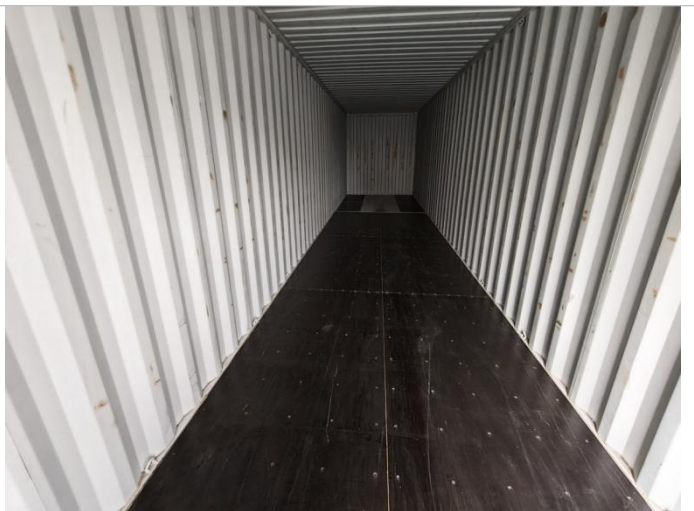
The empty container view



The empty container view



The empty container view



The empty container view



The empty container view



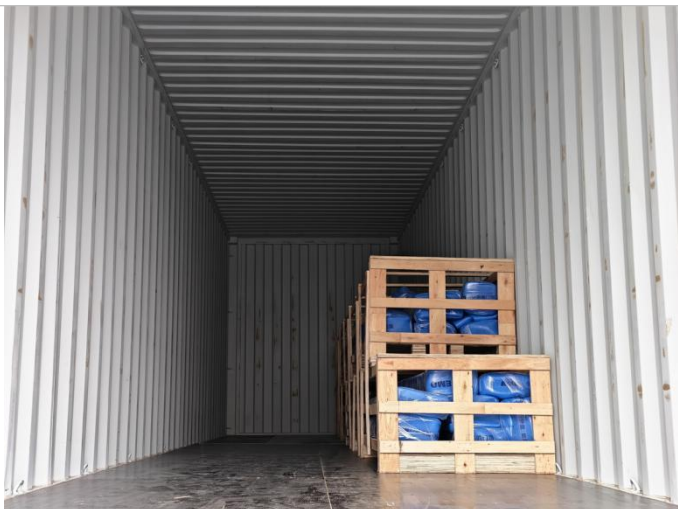
The empty container view



The empty container view



The empty container view



1/4 loading



1/2 loading



3/4 loading



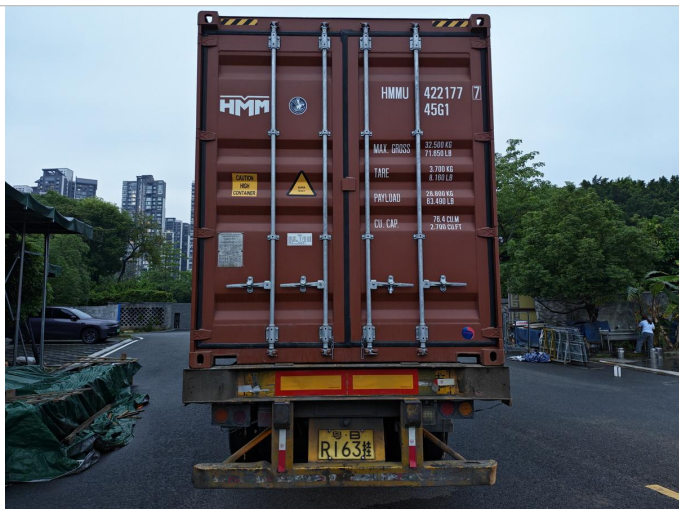
Full loading



Seal the door



Seal the door



Seal the door



The seal No:25H1266719

Other pictures



Goods in warehouse



Goods in warehouse



Goods in warehouse



Goods in warehouse



Goods in warehouse



Goods in warehouse



Goods in warehouse



Goods in warehouse



Goods in warehouse



Goods in warehouse

## The End of Report

**Note: 1.** This report reflects our findings at the time and the place of inspection based on random samples selected. **2.** This inspection was carried out to the best of our knowledge and abilities, and our responsibility is limited to the exercise of reasonable one. **3.** This report does not relieve the sellers from their contractual obligations nor does it prejudice buyer's right for compensation for any apparent and/or hidden defects not detected during our inspection or occurring thereafter. **4.** This report does not evidence shipment.