

Previo en origen



Container Loading Inspection Report

GENERAL DESCRIPTION



Client Name:

Product description:	Windows,door
PO NO :	-
Letter of credit No :	-
Loading location :	Foshan city,Guangdong China
Destination country :	-
Date/time of loading :	May 6 th , 2026
Inspection date :	May 6 th , 2026

Supplier:

Factory:	Foshan EMD doors and windows factory
Inspector:	Mr.Chen
Contact:	Cs

QUANTITY CHECK

	Passed	Failed	Pending	N/A	Remark*
A. Quantity & Assortment	✓				
B. Condition of Container(s)	✓				
C. Condition of export cartons	✓				
D. Shipping marks			✓		1
E. Client special requirement				✓	

*Refer to Part REMARKS to see detail

OVERALL INSPECTION RESULT

REMARKS

PROBLEMATIC REMARKS

- 1, No marking and label information provided, based on actual finding, pls see pictures.
- 2, One carton of hand tools is not listed on the packing list. However, the customer has approved the shipment of these goods. All courier documents and labels on the carton and products have been completely removed.



SAMPLE COLLECTION RECORD

No sample collection record.

Note: **1.** This report reflects our findings at the time and the place of inspection based on random samples selected. **2.** This inspection was carried out to the best of our knowledge and abilities, and our responsibility is limited to the exercise of reasonable one. **3.** This report does not relieve the sellers from their contractual obligations nor does it prejudice buyer's right for compensation for any apparent and/or hidden defects not detected during our inspection or occurring thereafter. **4.** This report does not evidence shipment

Please find our inspections details from next page (Section A - G)

A. QUANTITY & ASSORTMENT

Item/Style/SKU No.	Product Description	Order Qty (pcs)	Order Qty (cartons)	Declared Qty of Export Pieces	Declared Qty of Export Carton
D11	Pocketsliding door ELECTRICOPEN	4	1	4	1
D12	Pocketsliding door ELECTRICOPEN	2		2	
D8	Pocketsliding door	2		2	
-	Dormant window	5	1	5	1
-	Partition	2		2	
D16	Pocketsliding door	2	1	2	1
D7	Pocketsliding door	2		2	
D6	Swing door	1		1	
D5	Swing door	1		1	
D14	Swing door	1		1	
D15	Swing door	1		1	
D4	Sliding door	2	1	2	1
D13	Pocketsliding door ELECTRICOPEN	4		4	
D8	Pocketsliding door	1		1	
D10	Pocketsliding door ELECTRICOPEN	3		3	
W10	Casementwindow	1	1	1	1
W10	Casementwindow			1	
W3	Casement&owning window	1		1	
W9	Casement&owning window			1	
W4	Casement&owning window	1		1	
W6	Casement&owning window			1	
W5	Casement&owning window		1		

W5	Casement&owning window	1		1	
W4	Casement&owning window	1		1	
W6	Casement&owning window	1		1	
W10	Casementwindow	2		2	
W3	Casement&owning window	1		1	
W9	Casement&owning window	1		1	
-	Composite Wooden Door	13	1	13	1
-	Composite Wooden Door	13	1	13	1
-	Composite Wooden Door	39	1	39	1
-	Hand Tools	6	1	6	1
Total:		114	9	114	9
Result:	PASSED				
Remark:	-				

B. CONDITION OF CONTAINER(S)

✓	PASSED
	FAILED
	OTHER
Result:	PASSED
Remark:	-

C. CONDITION OF EXPORT CARTONS

✓	PASSED
	FAILED
	OTHER
Result:	PASSED
Remark:	-

D. CONDITION OF LOADING LOCATION

Loading Location:	✓	Factory	✓	Warehouse		Other:
Weather:	✓	Rainy		Sunny		Snowy: Other:
Sheltered:	✓	Yes		No		

E. SHIPPING MARKS

Shipping Marks (on 2 side):	Pending
Side Marks (on 2 side):	Pending
Inner Box Marks (on/side)	Pending
Result:	Pending
Remark:	No marking and label information provided, based on actual finding, pls see pictures.

F. CONTAINER DETAILS

1 st Container Type	Container No.	Seal No.	Loaded Cargo			
			Item/ Style No.	Product Description	Loaded Pieces	Loaded Carton
40HC	CAIU7342265	25H1303390	D11	Pocketsliding door ELECTRICOPEN	4	1
			D12	Pocketsliding door ELECTRICOPEN	2	
			D8	Pocketsliding door	2	
			-	Dormant window	5	1
			-	Partition	2	
			D16	Pocketsliding door	2	1
			D7	Pocketsliding door	2	
			D6	Swing door	1	
			D5	Swing door	1	
			D14	Swing door	1	
			D15	Swing door	1	
			D4	Sliding door	2	1
			D13	Pocketsliding door ELECTRICOPEN	4	
			D8	Pocketsliding door	1	
			D10	Pocketsliding door ELECTRICOPEN	3	
			W10	Casementwindow	1	1
			W3	Casement&owning window	1	
			W9	Casement&owning window	1	
			W4	Casement&owning window	1	
			W6	Casement&owning window	1	
			W5	Casement&owning window	1	
			W5	Casement&owning window	2	
			W4	Casement&owning window	1	
			W6	Casement&owning window	1	
			W10	Casementwindow	13	
			W3	Casement&owning window	13	1
			W9	Casement&owning window	39	1
			-	Composite Wooden Door	6	1
			-	Composite Wooden Door	4	1
			-	Composite Wooden Door	2	
-	Hand Tools	2				
Total:					114	9

G. CLIENT SPECIAL REQUIREMENT

		Client Requirements	Result
1	Shipping Marks		Pending
2	Label And Barcode		Pending
3	Product color, size		N/A
		Result: Pending	
		Remark: -	

PHOTOS

Photos of items: Hand Tools



Carton View(This label has been removed)



Shipping Mark(This label has been removed)



Carton View



Product View



Product View(label has been removed)

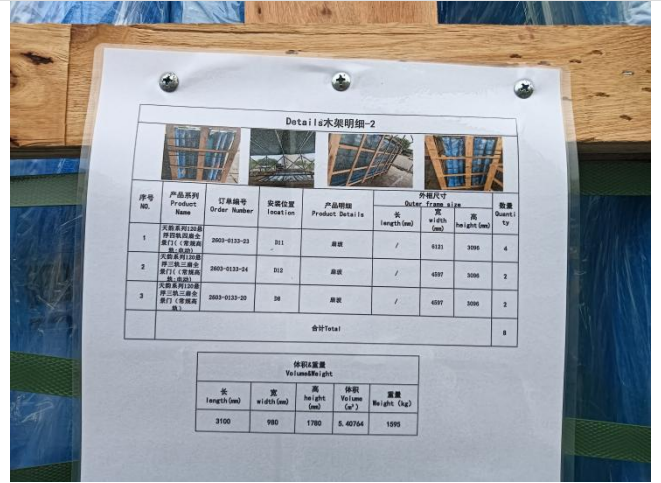


Product View(label has been removed)

Photos of items:D11-D12-D08



Carton View

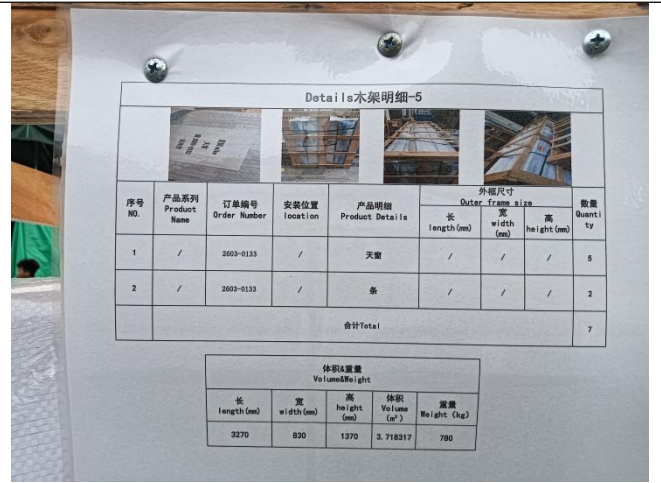


Shipping Mark

Photos of items:Dormant window&Partition



Carton View



Shipping Mark

Photos of items:D16-D7-D6-D5-D14-D15



Shipping Mark



Shipping Mark

Photos of items:D4-D13-D8-D10



Carton View



Shipping Mark

Photos of items:Composite Wooden Door



Carton View



Shipping Mark

Photos of loading container#CAIU7342265



The container view



The container view



The container view



The container view



The container view



Container number:CAIU7342265



The empty container view



The empty container view



The empty container view



The empty container view



The empty container view



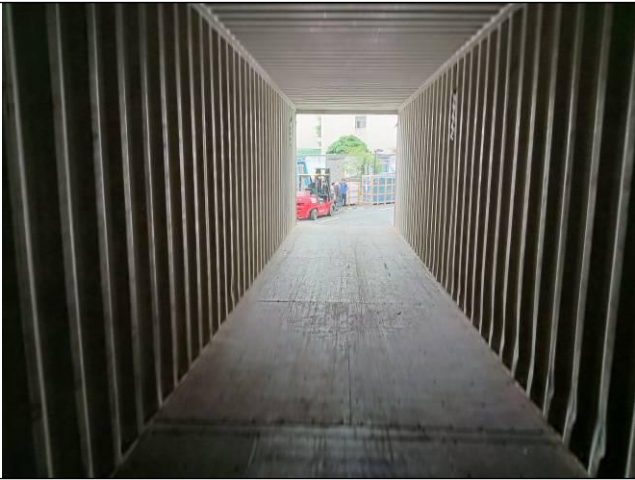
The empty container view



The empty container view



The empty container view



The empty container view



The empty container view



The empty container view



The empty container view



The empty container view



The empty container view



The empty container view



The empty container view



The empty container view



The empty container view



Light leakage check



The container No:CAIU7342265



Loading



1/4 loading



2/4 loading



3/4 loading



Full loading



Full loading



Seal the door



Seal the door



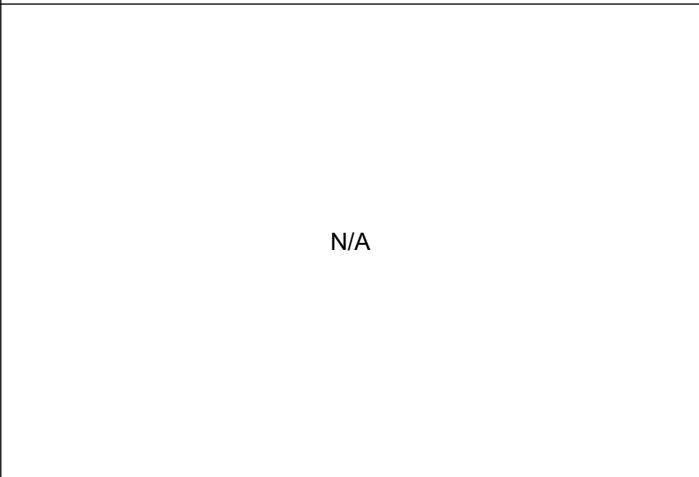
The seal No:25H1303390



The seal No:25H1303390



Seal the door

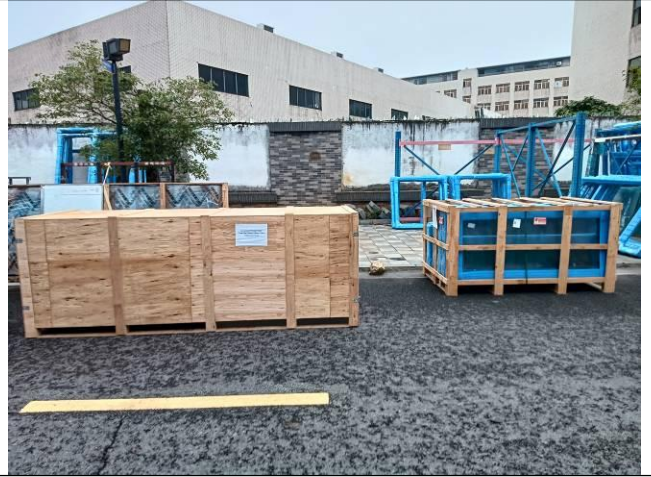


N/A

Other pictures



Goods in warehouse



Goods in warehouse



Goods in warehouse



Goods in warehouse



Goods in warehouse



Loading Factory

The End of Report

Note: 1. This report reflects our findings at the time and the place of inspection based on random samples selected. 2. This inspection was carried out to the best of our knowledge and abilities, and our responsibility is limited to the exercise of reasonable one. 3. This report does not relieve the sellers from their contractual obligations nor does it prejudice buyer's right for compensation for any apparent and/or hidden defects not detected during our inspection or occurring thereafter. 4. This report does not evidence shipment.