




MT-INSPECTION

# Final Random Inspection Report

Report No.: MT-20260506-004

## GENERAL SUMMARY:

Client:	沈阳赛弗威贸易有限公司	
PO No.:	-	
Item No.:	Work suit (top+overalls)-58#	
Product Name:	Work suit (top+overalls)	
Quantity:	841sets	
Inspection location:	Fengdu,Chongqing, China	
Supplier:	Hongxinsheng Clothing Co., Ltd	
Date of inspection:	May 6.2026	

## OVERALL CONCLUSION:

Inspection criteria	Passed	Failed	Pending	Comments
Quantity available:	-	-	x	Remark 1
Product Conformity:	-	-	x	Remark 2
Workmanship:	-	x	-	Remark 5
Test and measurement:	x	-	-	-
Labeling:	-	-	x	Remark 3
Packing and shipping mark:	-	-	x	Remark 3,4
<b>Result:</b>	<input type="checkbox"/> <b>Acceptable</b>			<input checked="" type="checkbox"/> <b>Reject</b> <input type="checkbox"/> <b>Pending</b>

## SPECIAL REMARK:

1.As of the time the inspector left the factory, 30% of products(280sets/20ctns) had been completed and packed in carton, others are still in production.



N/A

2.No ref.samples were provided by client and factory.

3.No shipping mark and marking spec. available for comparison on site. there are some unsightly handwritten markings on the outer carton.



# Final Random Inspection Report



4.No packing method spec. available for comparison on site.

5.Inspecting 80 sets of products, it was found that each product had multiple thread ends, and overall the products were very rough.





# Final Random Inspection Report



### AVAILABLE QUANTITY:

Order No.	Item No.	Order Qty		Packed		Not finished		Not packed		Inspect Qty	
		pcs	ctn	pcs	ctn	pcs	ctn	pcs	ctn	pcs	ctn
-	Work suit (top+overalls)-58#	841	/	280	20	561	-	561	-	80	6
<b>Total:</b>		<b>841</b>	<b>/</b>	<b>280</b>	<b>20</b>	<b>561</b>	<b>-</b>	<b>561</b>	<b>-</b>	<b>80</b>	<b>6</b>

Lot Size	General Inspection Levels			Special Inspection Levels			
	I	II	III	S1	S2	S3	S4
2 to 8	A	A	B	A	A	A	A
9 to 15	A	B	C	A	A	A	A
16 to 25	B	C	D	A	A	B	B
26 to 50	C	D	E	A	B	B	C
51 to 90	C	E	F	B	B	C	C
91 to 150	D	F	G	B	B	C	D
151 to 280	E	G	H	B	C	D	E
281 to 500	F	H	J	B	C	D	E
501 to 1,200	G	J	K	C	C	E	F
1,201 to 3,200	H	K	L	C	D	E	G
3,201 to 10,000	J	L	M	C	D	F	G
10,001 to 35,000	K	M	N	C	D	F	H
35,001 to 150,000	L	N	P	D	E	G	J
150,001 to 500,000	M	P	Q	D	E	G	J
500,001 and over	N	Q	R	D	E	H	K

### Single sampling plans for normal inspection

Sample Size Code Letter	Sample Size	Acceptable Quality Levels (Normal Inspection)																					
		0.065		0.10		0.15		0.25		0.40		0.65		1.0		1.5		2.5		4.0		6.5	
		Ac	Re	Ac	Re	Ac	Re	Ac	Re	Ac	Re	Ac	Re	Ac	Re	Ac	Re	Ac	Re	Ac	Re	Ac	Re
A	2																					0	1
B	3																					0	1
C	5																					0	1
D	8																					1	2
E	13													0	1							2	3
F	20											0	1									3	4
G	32											0	1									5	6
H	50											0	1									7	8
J	80					0	1					1	2									10	11
K	125											1	2									14	15
L	200	0	1					1	2			2	3									21	22
M	315					1	2					2	3										
N	500					2	3					3	4										
P	800	1	2			3	4					4	5										
Q	1250	2	3			4	5					5	6										
R	2000	3	4			5	6					6	7										



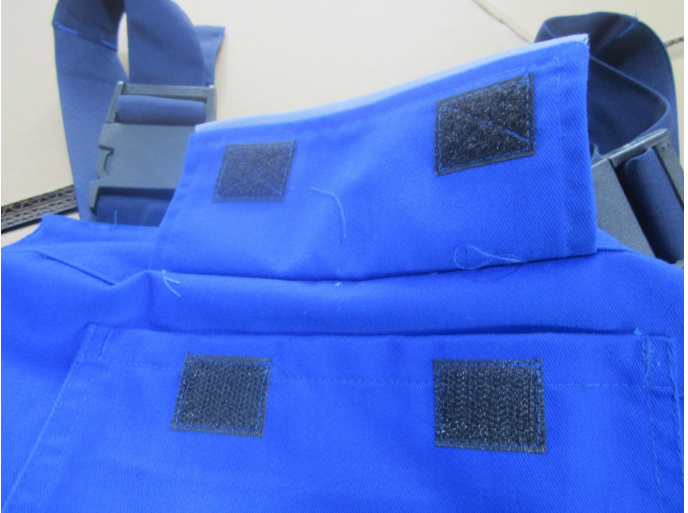
MT-INSPECTION

# Final Random Inspection Report

Report No.: MT-20260506-004

<b>Inspection standard:</b> ANSI/ASQC Z1.4-2003 Sampling plan: <i>Single, Normal</i> Inspection level: II AQL: Critical: Not Allowed.	<b>Sample Size:80sets</b>			
	<b>Critical</b>	<b>Major</b>	<b>Minor</b>	
	<b>AQL:</b>	<b>0</b>	<b>2.5</b>	<b>4.0</b>
	<b>Defects Found:</b>	<b>0</b>	<b>1+100%</b>	<b>0</b>
	<b>Max. Allowed:</b>	<b>0</b>	<b>5</b>	<b>7</b>

WORKMANSHIP:						
Item No.	Sample size	Defective rate	Defects Description	Cri	Maj	Min
Work suit (top+overalls)-58#	80sets	1.25%	Logo skewed	0	1	0
		100%	Uncut thread ends(multiple locations)	0	100%	0
<b>Total defect:</b>				<b>0</b>	<b>1+100%</b>	<b>0</b>
<b>Allowed:</b>				<b>0</b>	<b>5</b>	<b>7</b>
<b>Result:</b>				<b>Fail, remark 5</b>		

Defect Pictures:	
Item No:Work suit (top+overalls)-58#	
	
<b>Logo skewed -Major</b>	<b>Uncut thread ends(multiple locations) -Major</b>



# Final Random Inspection Report



Uncut thread ends(multiple locations) -Major



Uncut thread ends(multiple locations) -Major



Uncut thread ends(multiple locations) -Major



Uncut thread ends(multiple locations) -Major



Uncut thread ends(multiple locations) -Major



Uncut thread ends(multiple locations) -Major



# Final Random Inspection Report

## PRODUCT CONFORMITY & ON-SITE TESTS

Check Points & On-site Tests	Sample Size	Criteria	Result & Remarks
Visual Check (Style, Appearance, Material, Color)	All Sample size	a. Conformance to Style / Appearance / Material / Color compared against: <input type="checkbox"/> Client's / <input checked="" type="checkbox"/> Factory's ref. sample. <input type="checkbox"/> No ref. sample for comparison. (N.B.: Provide details in comment section if 2 or more color shades and/or any color variation is found.) b. Free of nick, burrs, pits, sharp point or any other defects which may affect the product serviceability. c. Finish/ coating is smooth and even without streaks, blisters, wrinkles, or runs. d. Good overall appearance with good alignment of components.	<b>Fail</b> Remarks :2,5
Color Fastness Test	S-2	Dry/wet white cloth rubbing (dry white paper substitute if white cloth is not available)	PASS
Rubbing Test	S-2	Wet rubbing by water for 15 seconds and then dried as per client's specification.	PASS
Function test	S-2	For buckle,zipper,snap,Velcro etc.) Quickly operate each buckle,zipper,snap,Velcro, etc. on each sample by 20 full cycles.	PASS
Seam strength test	All Sample size	By hand force	PASS
Stitches per inch	2pcs/item	Actual finding: 9.5stitches	PASS
Color shade check	S-2	No color discrepancy	PASS
Barcode/QR code scanning test	S-2	Checked by scanner readable	N/A
Smell test	All Sample size	No pungent smell come out	PASS

## PACKING AND ACCESSORIES:

Item No.:	Master shipper ( pcs/ctn )	Carton size L×W×H (cm)	G.W (Kg)	N.W (Kg)	Color box size L×W×H (cm)	Color box weight(g)	Carton Barcode	Color box Barcode
Work suit (top+overalls)-58#	14 or 16	-	-	-	-	-	-	-

## PRODUCT SPECIFICATION:

Item No.:	Check point	Client Spec.	Ref. Sample	Actual size check
Work suit (top+overalls)-58#	Size check	-	-	See below size teble



MT-INSPECTION

# Final Random Inspection Report

Report No.: MT-20260506-004

check 2026/1

部位/规格	38#	40#/155	42#/160	44#/165	46#/170	48#/175	50#/180	52#/185	54#/190	56#/195	58#/200*	60#/205	62#/210	64#/215	66#/220
66	✓	67.5	69	70.5	72	73.5	75	76.5	78	79	80	81	82	83	84
108	✓	110	112	114	116	120	124	128	132	136	140	144	148	152	156
76	✓	78	80	82	86	90	94	98	102	106	110	114	118	122	126
100	✓	102	104	106	110	114	118	122	126	130	134	138	142	146	150
47	✓	48	49	50	51	52	53	54	55	56	57	58	59	60	61
61	✓	62	63	64	65	66	67	68	69	70	71	72	73	74	75
10	✓	10.4	11	11.2	12	12	12.4	12.8	13	13.6	14	14.4	15	15.2	15.6
45	✓	46	47	48	49	50	51	52	53	54	55	56	57	58	59
后领高	8	8	8	8	8	8	8	8	8	8	8	8	8	8	8
后约克高	11.15	11.2	11	11.5	12	11.75	11.9	12.05	12	12.35	12.5	12.65	13	13	13.1
下摆高	2	5	5	5	5	5	5	5	5	5	5	5	5	5	5
袖克夫高	4.5	4.5	4.5	4.5	4.5	4.5	4.5	4.5	4.5	4.5	4.5	4.5	4.5	4.5	4.5
门襟宽	6.2	6.2	6.2	6.2	6.2	6.2	6.2	6.2	6.2	6.2	6.2	6.2	6.2	6.2	6.2
胸斗宽	11.7	11.7	12	12.3	13	13.3	13.8	14.3	15	15.3	15.8	16.3	17	17.3	17.8
胸斗高	14.9	14.9	15	15.5	16	16.5	17	17.5	18	18.5	19	19.5	20	20.5	21
92	✓	100	101	102	104	106	108	110	112	114	116	118	120	122	124
86	✓	88	90	92	96	100	104	108	112	116	120	124	128	132	136
66	✓	68	70	72	76	80	84	88	92	96	100	104	108	112	116
94	✓	96	98	100	104	108	112	116	120	124	128	132	136	140	144
19	✓	19.5	20	20.5	21	21.5	22	22.5	23	23.5	24	24.5	25	25.5	26
裤侧斗高	21.75	21.8	22	22.3	23	22.75	23	23.25	24	23.75	24	24.25	25	24.8	25
腰宽	4	4	4	4	4	4	4	4	4	4	4	4	4	4	4
双刀宽	3.5	3.5	3.5	3.5	3.5	3.5	3.5	3.5	3.5	3.5	3.5	3.5	3.5	3.5	3.5
15	✓	15	15	16	16	17	17	18	18	19	19	20	20	21	21
裤后斗宽	15.25	15.3	16	15.8	16	16.25	16.5	16.75	17	17.25	17.5	17.75	18	18.3	18.5
裤后斗高	17.75	17.8	18	18.3	19	18.75	19	19.25	20	19.75	20	20.25	21	20.8	21
裤左腿贴	15.75	15.8	16	16.3	17	16.75	17	17.25	18	17.75	18	18.25	19	18.8	19
裤左腿贴	15.25	15.3	16	15.8	16	16.25	16.5	16.75	17	17.25	17.5	17.75	18	18.3	18.5
17.25	✓	17.3	18	17.8	18	18.25	18.5	18.75	19	19.25	19.5	19.75	20	20.3	20.5

EXPORT CARTON INFORMATION:					
Carton:	New export carton	Yes		Opaque gummed tape	/
Fastening:	Metal staples	No	Sealing:	Transparent gummed tape	Yes
Strapping:	Nylonx2	No		Paper tape	-
Material:	Ply of corrugated paper	5	Others:	-	

**Product photo show:**

Item: Work suit (top+overalls)-58#



This reflects our findings at the time and place of inspection. This inspection has been carried out to the best of our knowledge and ability and our responsibility is limited to the exercise of reasonable one. This report does not relieve the sellers from their contractual obligations nor prejudice buyer's right for compensation for any apparent and / or hidden defects not detected during our random inspection or occurring thereafter. This report does not evidence shipment.



MT-INSPECTION

# Final Random Inspection Report

Report No.: MT-20260506-004

Carton view



Shipping mark by handwriting



Open carton



Unit packing view



Unit packing view



Open unit packing view



Product -1set

Product -1set



# Final Random Inspection Report



Product view



Product view



Product view



Product view



Product view



Product view



# Final Random Inspection Report



Product view



Product view



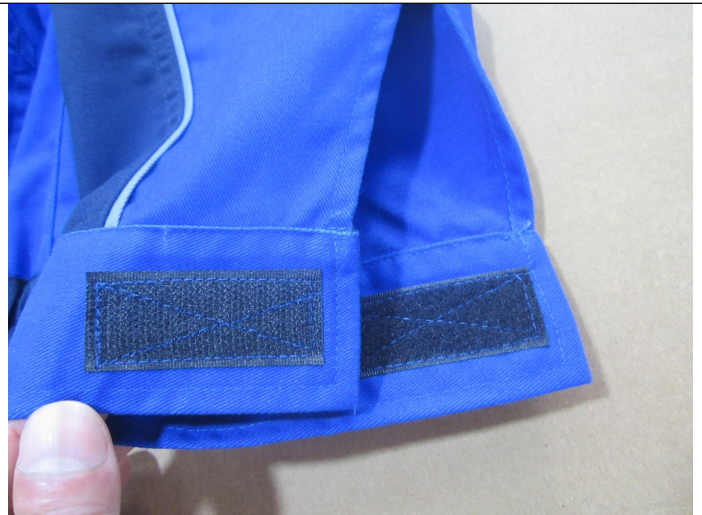
Product view



Product view



Product view



Product view



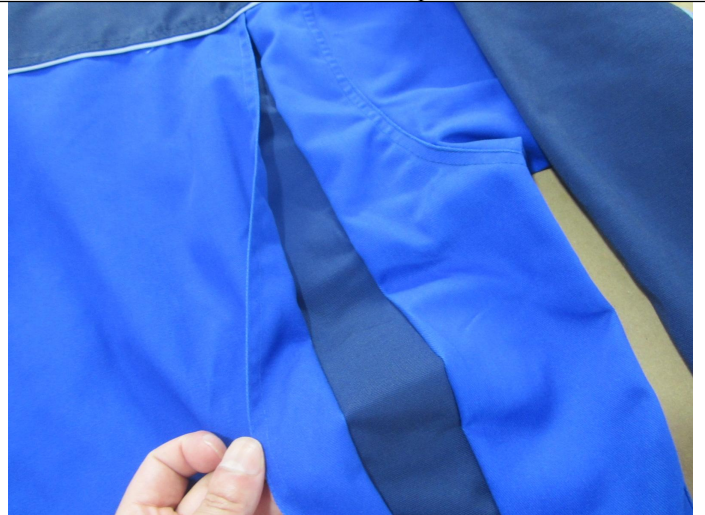
MT-INSPECTION

# Final Random Inspection Report

Report No.: MT-20260506-004



Product view



Product view



Product view



Product view



Product view



Product view



MT-INSPECTION

# Final Random Inspection Report

Report No.: MT-20260506-004



Product view



Product view



Logo view



Label view



Product view



Product view



# Final Random Inspection Report



Product view



Product view



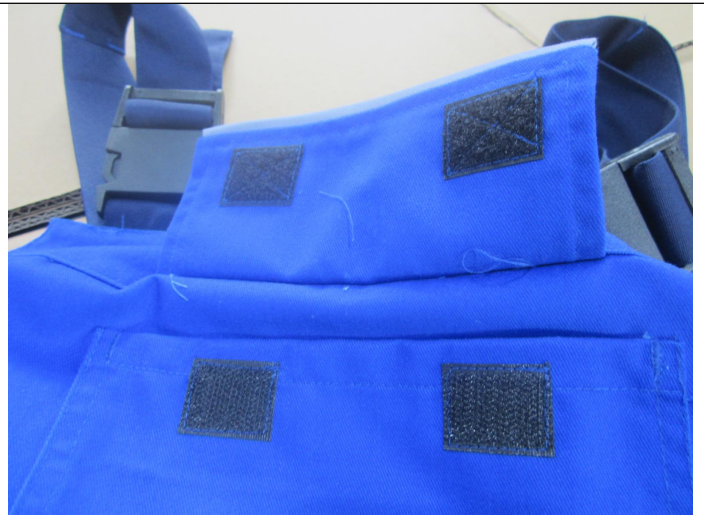
Product view



Product view



Product view



Product view



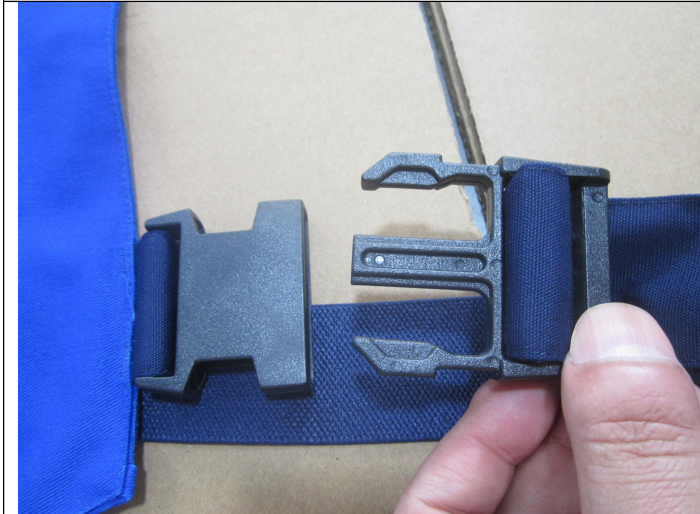
# Final Random Inspection Report



Product view



Product view



Product view



Product view



Product view



Product view



# Final Random Inspection Report



Product view



Product view



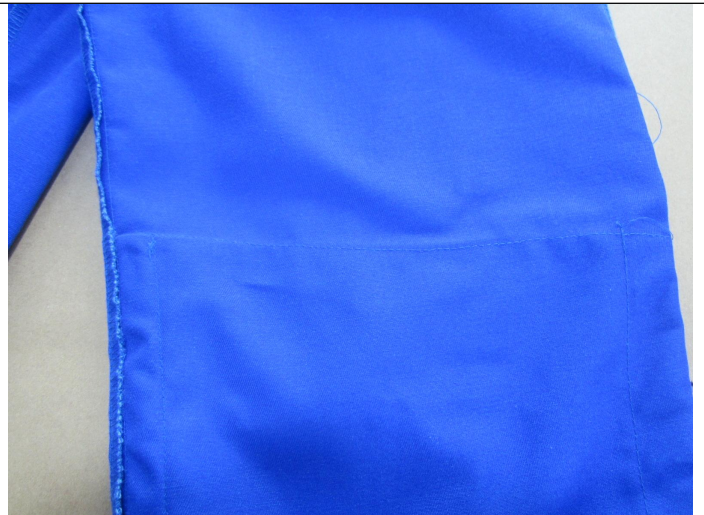
Product view



Product view



Product view



Product view



Label view for 38



Label view for 40



Label view for 42



Label view for 44



Label view for 46



Label view for 48



Label view for 50



Label view for 52



Label view for 54



Label view for 56



Label view for 58



Label view for 60



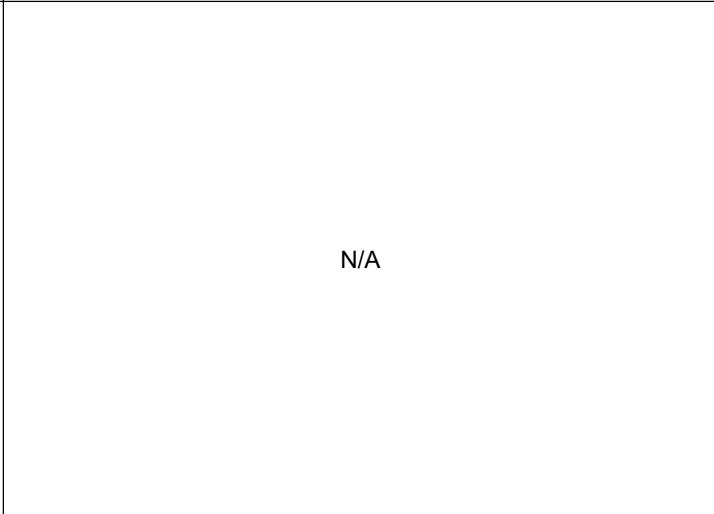
Label view for 62



Label view for 64



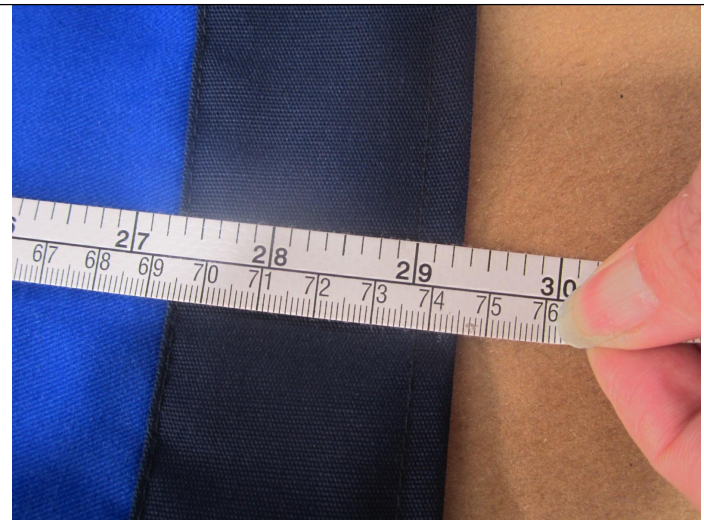
Label view for 66



N/A

## Measurement and Test

Item: Work suit (top+overalls)-58#





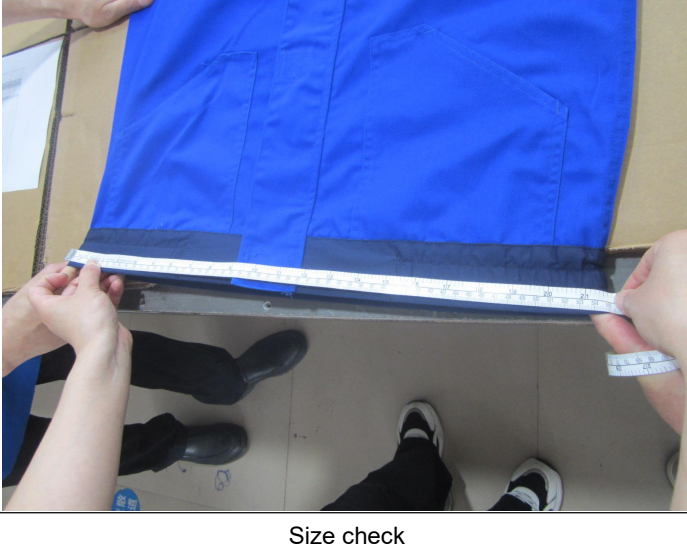





MT-INSPECTION

# Final Random Inspection Report

Report No.: MT-20260506-004

<p>Size check</p> 	<p>Size check</p> 
<p>Size check</p> 	<p>Size check</p> 
<p>Size check</p> 	<p>Size check</p> 



# Final Random Inspection Report



Size check



Size check



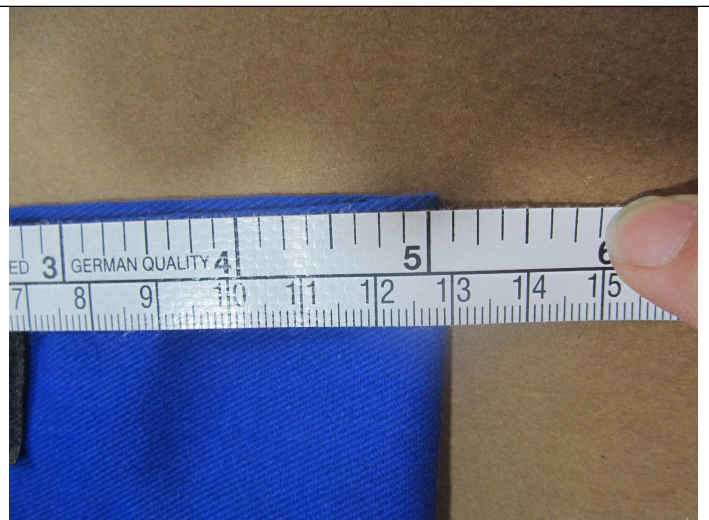
Size check



Size check



Size check



Size check



MT-INSPECTION

# Final Random Inspection Report

Report No.: MT-20260506-004



Size check



Size check



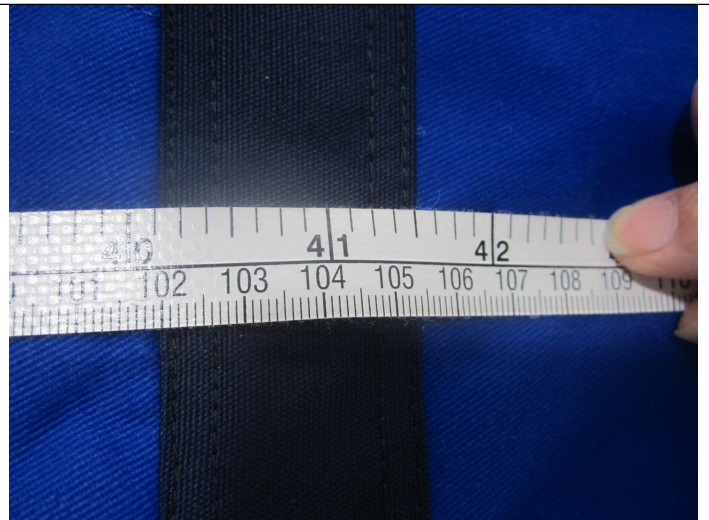
Size check



Size check



Size check



Size check



MT-INSPECTION

# Final Random Inspection Report

Report No.: MT-20260506-004



Size check



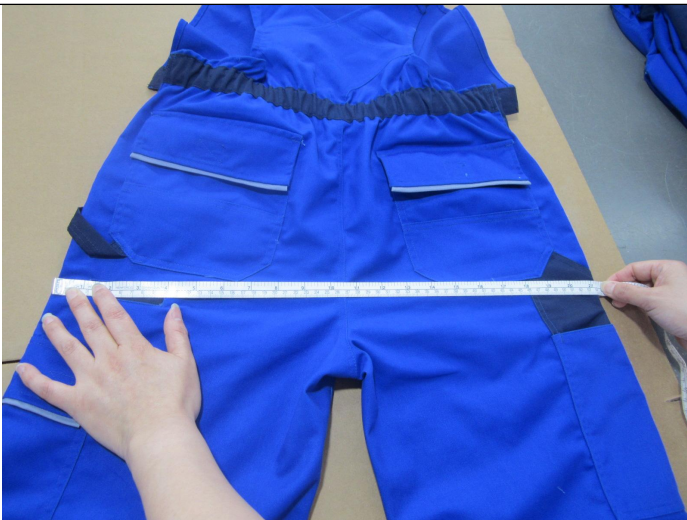
Size check



Size check



Size check



Size check



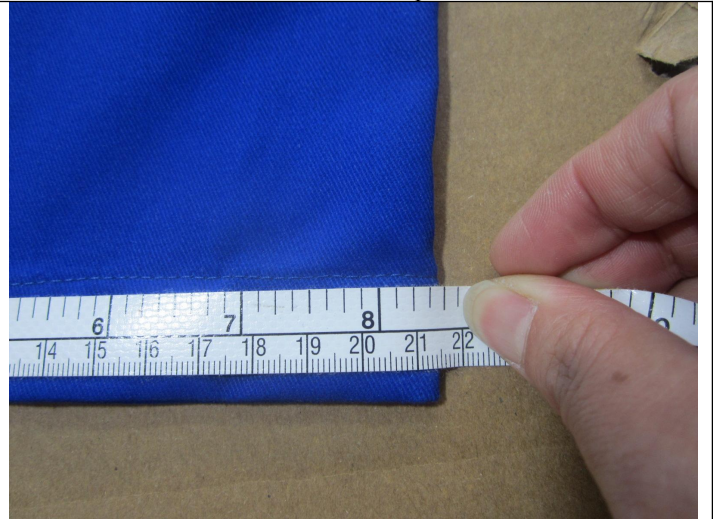
Size check



# Final Random Inspection Report



Size check



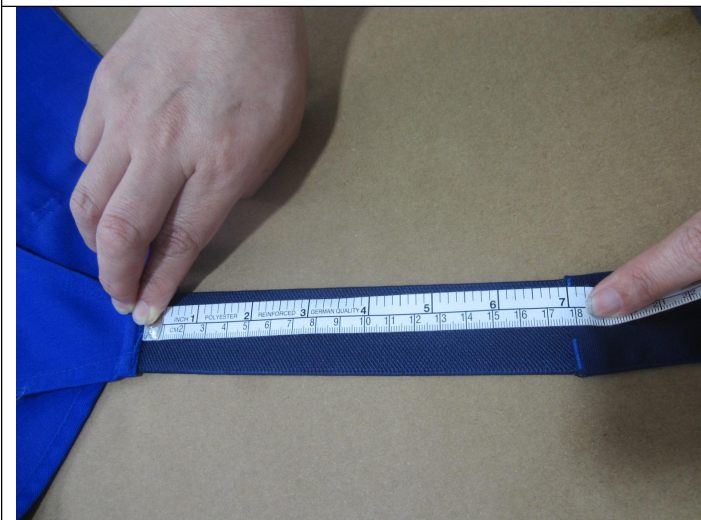
Size check



Size check



Size check



Size check



Size check



MT-INSPECTION

# Final Random Inspection Report

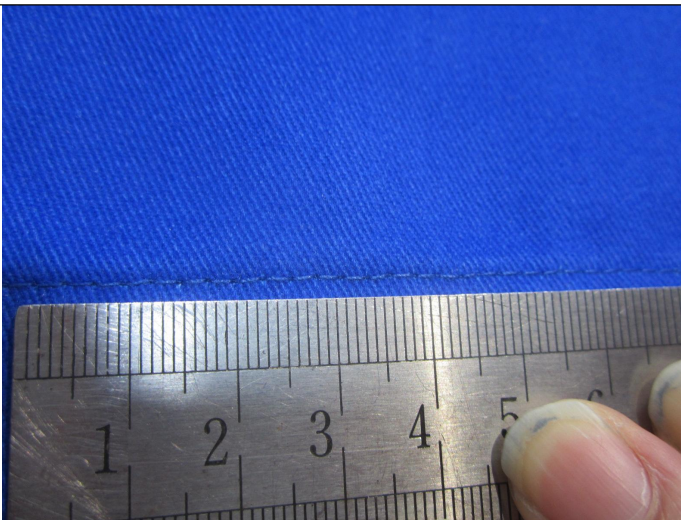
Report No.: MT-20260506-004



Color shade check



Color shade check



Stitches per inch:9.5



Stitches per inch:9.5



Rub test



Rub test



# Final Random Inspection Report



Function test



Function test



Function test



Function test



Function test



Function test



MT-INSPECTION

# Final Random Inspection Report

Report No.: MT-20260506-004



Function test



Function test



Seam strength test



Seam strength test

## Other photos





MT-INSPECTION

# Final Random Inspection Report

Report No.: MT-20260506-004

Finished goods



Finished goods



Workshop



Workshop



Inspection site

Factory's gate

**--The End Of Report--**