




MT-INSPECTION

# Final Random Inspection Report

Report No.: MT-20260506-001

## GENERAL SUMMARY:

Client:	/	
PO No.:	/	
Item No.:	CC-140	
Product Name:	Trolley	
Quantity:	460pcs	
Inspection location:	JinYun, ZheJiang, China	
Supplier:	Zhejiang Ranbo Electric Appliance Co., Ltd	
Date of inspection:	May 6, 2026	

## OVERALL CONCLUSION:

Inspection criteria	Passed	Failed	Pending	Comments	
Quantity available:	x	-	-		
Product Conformity:	-	-	x	Remark 2	
Workmanship:	-	x	-	Remark 4	
Test and measurement:	x	-	-		
Labeling:	x	-	-		
Packing and shipping mark:	-	-	x	Remark 3	
<b>Result:</b>	<b>[ ] Acceptable</b>			<b>[x] Reject</b>	<b>[ ] Pending</b>

## SPECIAL REMARK:

1. Upon the arrival, all products were finished and all packed into cartons.
2. There's no approved sample providing for reference during inspection.
3. No packing method spec. available for comparison on site.
4. Selected 50pcs/25cartons samples for inspection, found defects beyond AQL allowed, the inspector had already shown to the factory and requested to replace these defects.

## AVAILABLE QUANTITY:

Order No.	Item No.	Order Qty		Packed		Not finished		Not packed		Inspect Qty	
		pcs	ctn	pcs	ctn	pcs	ctn	pcs	ctn	pcs	ctn
-	CC-140	460	230	460	230	0	0	0	0	50	25
<b>Total:</b>		460	230	460	230	0	0	0	0	50	25



# Final Random Inspection Report

Lot Size	General Inspection Levels			Special Inspection Levels			
	I	II	III	S1	S2	S3	S4
2 to 8	A	A	B	A	A	A	A
9 to 15	A	B	C	A	A	A	A
16 to 25	B	C	D	A	A	B	B
26 to 50	C	D	E	A	B	B	C
51 to 90	C	E	F	B	B	C	C
91 to 150	D	F	G	B	B	C	D
151 to 280	E	G	H	B	C	D	E
281 to 500	F	H	J	B	C	D	E
501 to 1,200	G	J	K	C	C	E	F
1,201 to 3,200	H	K	L	C	D	E	G
3,201 to 10,000	J	L	M	C	D	F	G
10,001 to 35,000	K	M	N	C	D	F	H
35,001 to 150,000	L	N	P	D	E	G	J
150,001 to 500,000	M	P	Q	D	E	G	J
500,001 and over	N	Q	R	D	E	H	K

## Single sampling plans for normal inspection

Sample Size Code Letter	Sample Size	Acceptable Quality Levels (Normal Inspection)																						
		0.065		0.10		0.15		0.25		0.40		0.65		1.0		1.5		2.5		4.0		6.5		
		Ac	Re	Ac	Re	Ac	Re	Ac	Re	Ac	Re	Ac	Re	Ac	Re	Ac	Re	Ac	Re	Ac	Re	Ac	Re	
A	2																						0	1
B	3																						0	1
C	5																						0	1
D	8																						1	2
E	13																						1	2
F	20																						2	3
G	32																						3	4
H	50																						5	6
J	80																						7	8
K	125																						10	11
L	200	0	1																				14	15
M	315																						21	22
N	500																							
P	800	1	2																					
Q	1250	2	3																					
R	2000	3	4																					

<b>Inspection standard:</b> <a href="#">ANSI/ASQC Z1.4-2003</a> Sampling plan: <i>Single, Normal</i> Inspection level: II AQL: Critical: Not Allowed.	<b>Sample Size: 50pcs</b>			
	<b>AQL:</b>	<b>0</b>	<b>2.5</b>	<b>4.0</b>
	<b>Defects Found:</b>	<b>0</b>	<b>5</b>	<b>0</b>
	<b>Max. Allowed:</b>	<b>0</b>	<b>3</b>	<b>5</b>
	<b>Critical</b>		<b>Major</b>	<b>Minor</b>

This reflects our findings at the time and place in inspection. This inspection has been carried out to the best of our knowledge and ability and our responsibility is limited to the exercise of reasonable one. This report does not relieve the sellers from their contractual obligations nor prejudice buyer's right for compensation for any apparent and / or hidden defects not detected during our random inspection or occurring thereafter. This report does not evidence shipment.



# Final Random Inspection Report

WORKMANSHIP:						
Item No.	Sample size	Defective rate	Defects Description	Cri	Maj	Min
CC-140	50	2%	Wrong place of label	0	1	0
		2%	Poor assembly	0	1	0
		4%	Screw loosed	0	2	0
		2%	Missing instruction book	0	1	0
<b>Total defect:</b>				<b>0</b>	<b>5</b>	<b>0</b>
<b>Allowed:</b>				<b>0</b>	<b>3</b>	<b>5</b>
<b>Result:</b>				<b>Failed</b>		

## Defect Pictures:



Wrong place of label-major



Poor assembly-major



Screw loosed-major



Screw loosed-major



	<p>N/A</p>
<p><b>Missing instruction book-major</b></p>	

## PRODUCT CONFORMITY & ON-SITE TESTS

Check Points & On-site Tests	Sample Size	Criteria	Result & Remarks
Visual Check (Style, Appearance, Material, Color)	All Sample size	a. Conformance to Style / Appearance / Material / Color compared against: <input type="checkbox"/> Client's / <input type="checkbox"/> Factory's ref. sample. <input checked="" type="checkbox"/> No ref. sample for comparison. (N.B.: Provide details in comment section if 2 or more color shades and/or any color variation is found.) b. Free of nick, burrs, pits, sharp point or any other defects which may affect the product serviceability. c. Finish/ coating is smooth and even without streaks, blisters, wrinkles, or runs. d. Good overall appearance with good alignment of components.	<b>FAIL</b> Remark 2,4
Seam strength test	All Sample size	By hand force	PASS
Function check	S-2	All captioned function is well conducted as intended. Such as installation/adjusting, actual using function etc. All of function should be complied with claims.	PASS
Smell test	All Sample size	No pungent smell come out	PASS
Assembly test	All Sample size	The product should be able to be assembled according to the instruction manual	PASS

## PACKING AND ACCESSORIES:

Item No.:	Master shipper ( pcs/ctn )	Carton size L×W×H (cm)	G.W (Kg)	N.W (Kg)	Inner box size L×W×H (cm)	Inner box weight(kg)	Carton Barcode	Inner box Barcode
CC-140	2	50*39*68	26.8	25.4	37.5*24*65	12.7	4518301928139	4518301928139

## PRODUCT SPECIFICATION:

Item No.:	Check point	Client Spec.	Sample 1#	Sample 2#	Sample 3 #
CC-140	Size check(cm)	53*107*110	53*107*106	53*107*106	53*107*106
	Weight check(kg)	/	10.2	10.2	10.2



MT-INSPECTION

# Final Random Inspection Report

Report No.: MT-20260506-001

## EXPORT CARTON INFORMATION:

Carton:	New export carton	Yes	Sealing:	Opaque gummed tape	-
Fastening:	Metal staples	Yes		Transparent gummed tape	Yes
Strapping:	Nylonx2	No		Paper tape	-
Material:	Ply of corrugated paper	5ply	Others:	-	

## Product photo show:



Carton view



Carton view



Carton label



Barcode view



# Final Random Inspection Report



Carton view



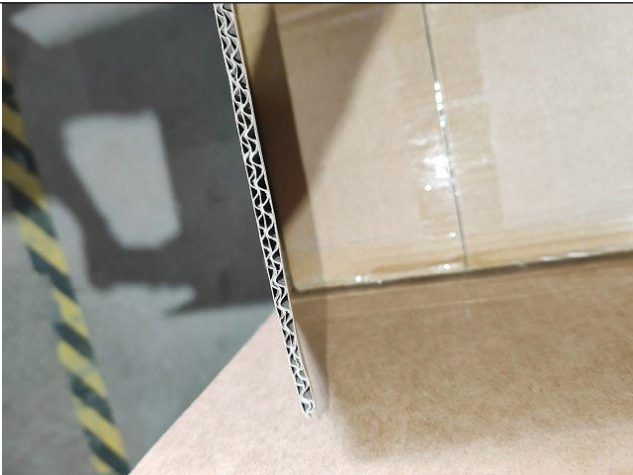
Carton view



Carton view



Open carton



5-ply carton



2 inner boxes per carton



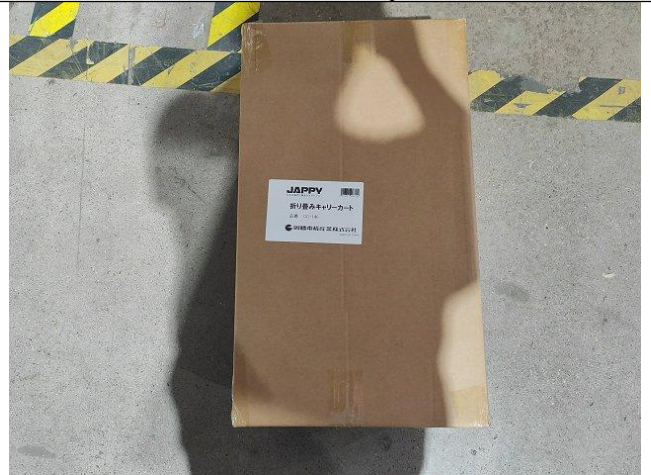
MT-INSPECTION

# Final Random Inspection Report

Report No.: MT-20260506-001



Inner box view



Inner box view



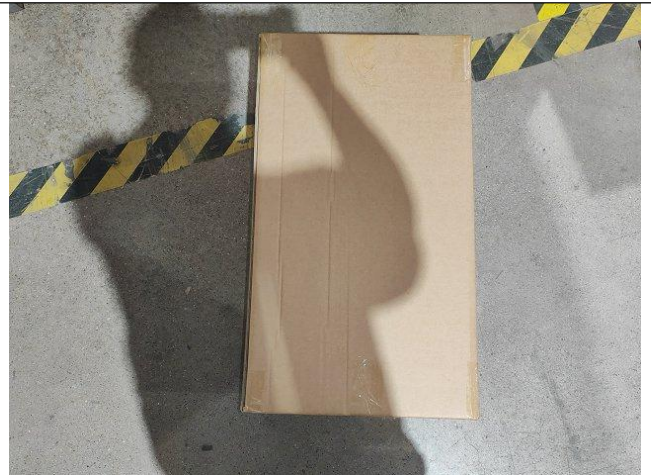
Label on inner box



Barcode view



Inner box view



Inner box view



# Final Random Inspection Report



Inner box view



Inner box view



Open inner box view



Inner packing view



5-ply inner box



Parts packing view



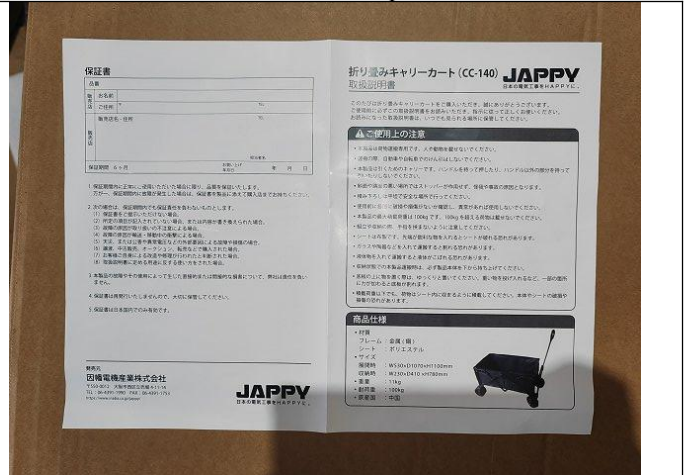
MT-INSPECTION

# Final Random Inspection Report

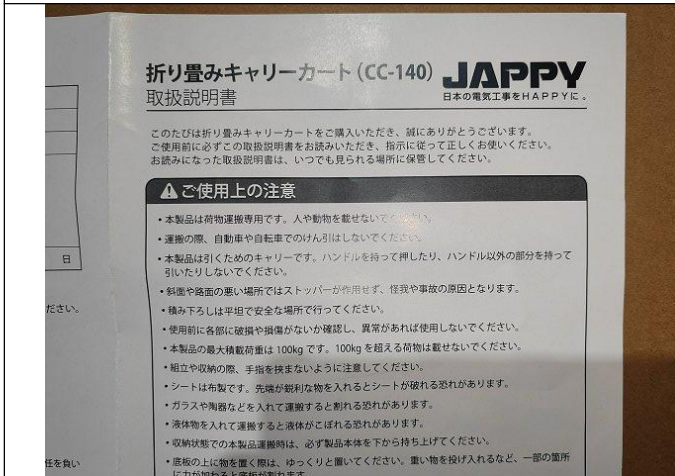
Report No.: MT-20260506-001



Manual view



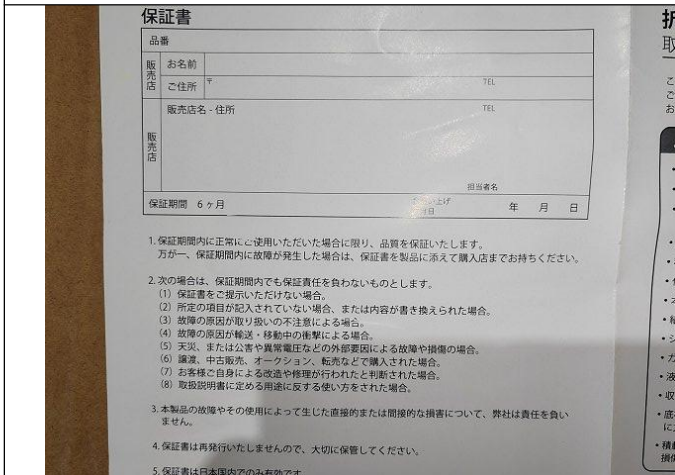
Manual view



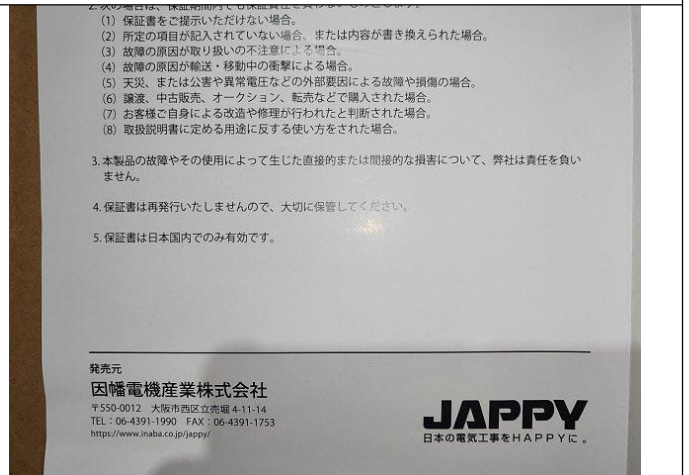
Manual view



Manual view



Manual view



Manual view



Manual view



Manual view



Manual view



Manual view



Manual view



Part packing view



MT-INSPECTION

# Final Random Inspection Report

Report No.: MT-20260506-001



Air holes



Parts view



Parts view



Parts view



Parts view



Parts view



# Final Random Inspection Report

<p>Parts view</p>	<p>Parts view</p>
<p>Parts view</p>	<p>Parts view</p>
<p>Parts view</p>	<p>Parts view</p>



MT-INSPECTION

# Final Random Inspection Report

Report No.: MT-20260506-001

<p>Parts view</p>	<p>Parts view</p>
<p>Parts view</p>	<p>Parts view</p>
<p>Parts view</p>	<p>Parts packing view</p>



# Final Random Inspection Report



Parts packing view



Parts packing view



Parts packing view



Parts packing view



Parts view



Parts view



# Final Random Inspection Report



Parts view



Parts view



Parts view



Parts view



Parts view



Parts view



# Final Random Inspection Report



Parts view



Parts view



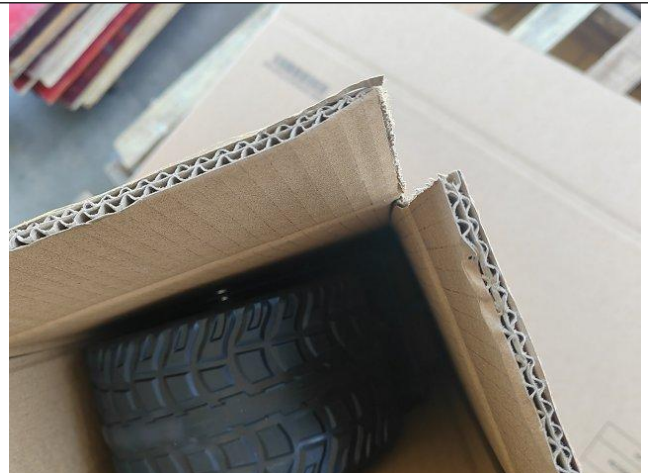
Parts view



Parts packing view



Parts packing view



Parts packing view



MT-INSPECTION

# Final Random Inspection Report

Report No.: MT-20260506-001



Parts packing view



Parts packing view



Parts view



Parts view



Parts view



Parts view



# Final Random Inspection Report



Parts view



Parts view



Parts view



Parts view



Parts view



Parts view



# Final Random Inspection Report



Parts view



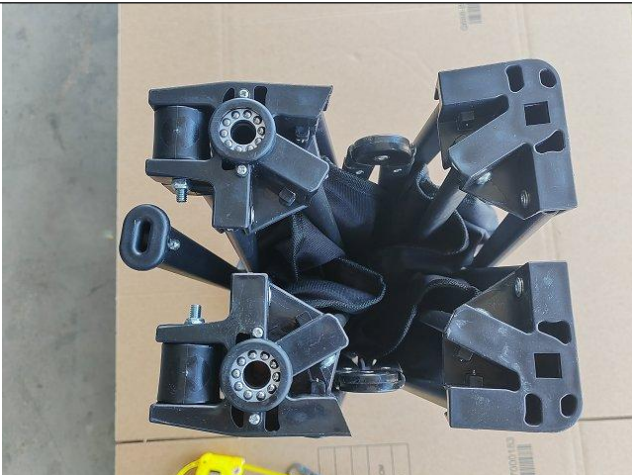
Parts packing view



Air holes



Parts view



Parts view



Parts view



MT-INSPECTION

# Final Random Inspection Report

Report No.: MT-20260506-001



Parts view



Parts view



Parts view



Parts view



Parts view



Parts view



MT-INSPECTION

# Final Random Inspection Report

Report No.: MT-20260506-001



Parts view



Parts view



Parts view



Parts view



Parts view



Parts view



MT-INSPECTION

# Final Random Inspection Report

Report No.: MT-20260506-001



Parts view



Label view



Parts view



Product view



Product view



Product view



# Final Random Inspection Report



Product view



Product view



Product view



Product view



Product view



Product view



# Final Random Inspection Report



Product view



Product view



Product view



Product view



Product view



Product view



# Final Random Inspection Report



Product view



Product view



Product view



Product view



Product view



Product view



MT-INSPECTION

# Final Random Inspection Report

Report No.: MT-20260506-001



Product view



Product view



Product view



Product view



Product view



Product view



# Final Random Inspection Report



Product view



Product view



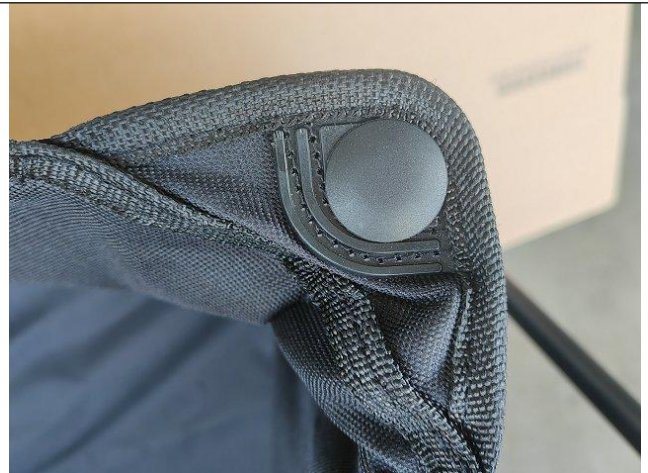
Product view



Product view



Product view



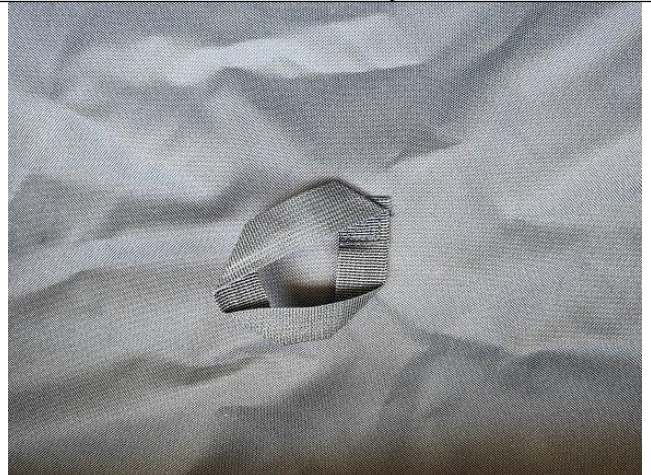
Product view



# Final Random Inspection Report



Product view



Product view



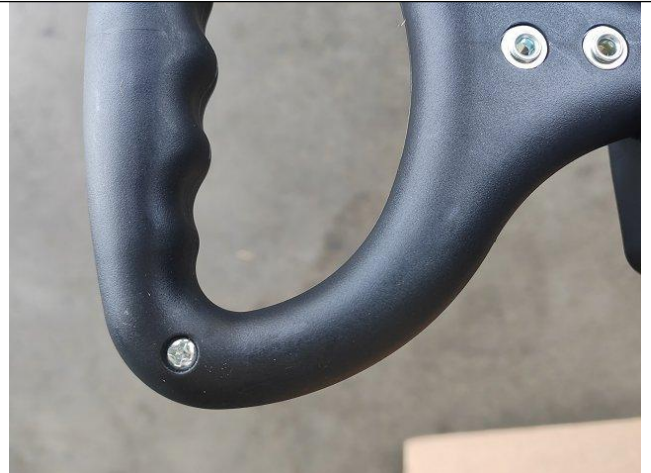
Product view



Product view



Product view



Product view



# Final Random Inspection Report



Product view



Product view



Product view



Product view



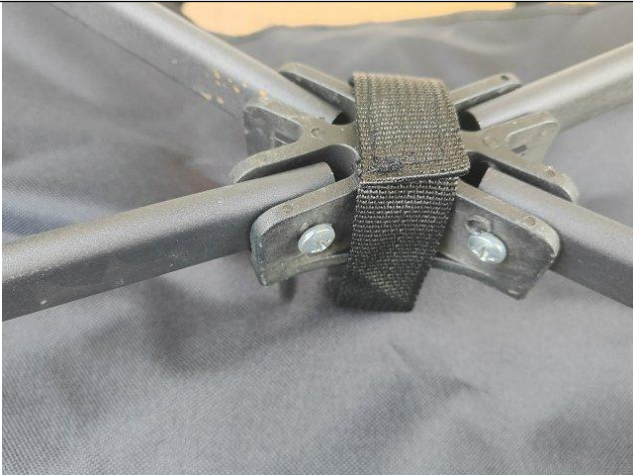
Product view



Product view



# Final Random Inspection Report



Product view



Product view



Product view



Product view



Product view



Product view



# Final Random Inspection Report



Product view



Product view



Product view



Product view



Product view



Product view



# Final Random Inspection Report



Product view



Product view



Product view



Product view



Product view



Product view



# Final Random Inspection Report



Product view



Product view



Product view



Product view



Product view



Product view



# Final Random Inspection Report



Product view



Product view



Product view



Product view



Product view



Product view



MT-INSPECTION

# Final Random Inspection Report

Report No.: MT-20260506-001



Product view



Product view



Product view



Product view

## Measurement and Test



Carton weight check



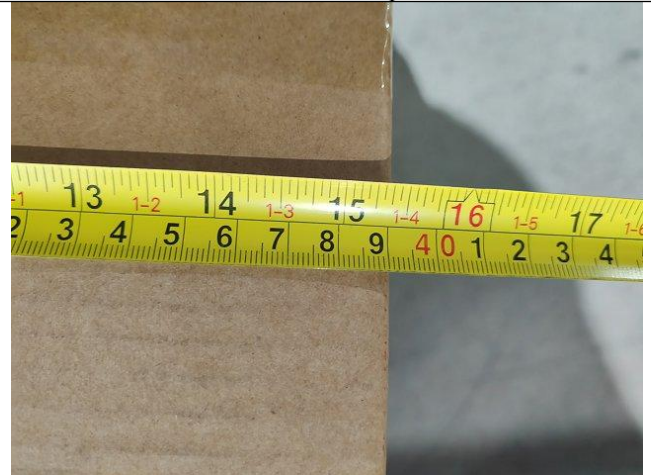
Carton weight check:26.8kg



# Final Random Inspection Report



Carton size check



Carton size check:39cm



Carton size check



Carton size check:68cm



Carton size check



Carton size check:50cm



# Final Random Inspection Report



Inner box weight check



Inner box weight check:12.7kg



Inner box size check



Inner box size check:37.3cm



Inner box size check



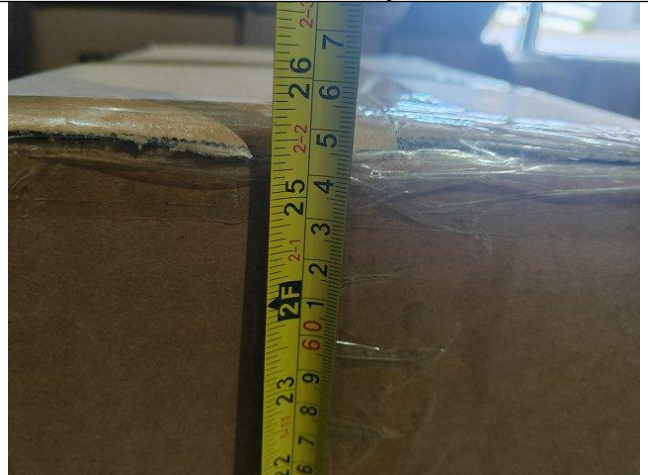
Inner box size check:24cm



# Final Random Inspection Report



Inner box size check



Inner box size check:64.5cm



Part size check



Part size check :82.5cm



Part size check



Part size check:46.8cm



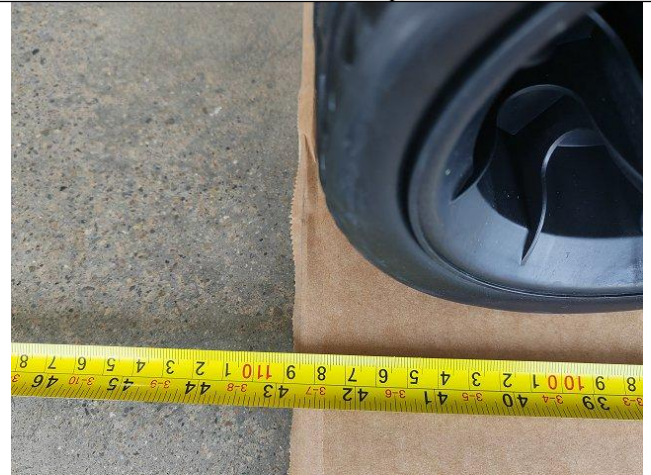
MT-INSPECTION

# Final Random Inspection Report

Report No.: MT-20260506-001



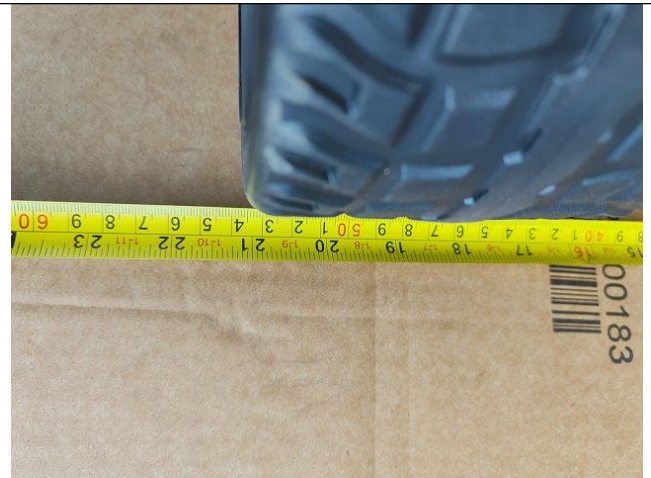
Product size check



Product size check:108.5cm



Product size check



Product size check:53.5cm



Product size check



Product size check:70cm



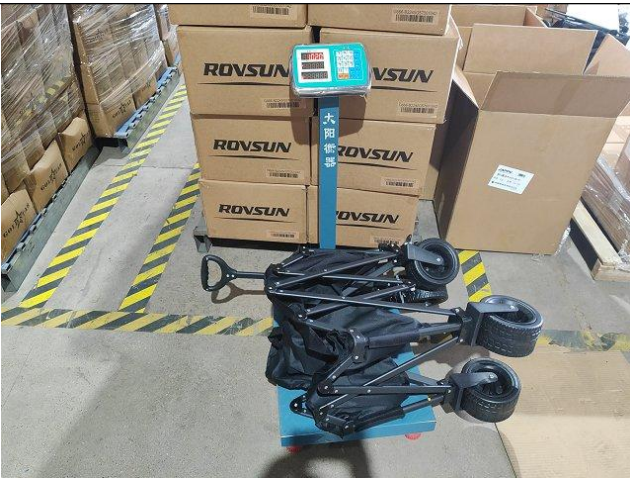
# Final Random Inspection Report



Product size check



Product size check:105.5cm



Product weight check



Product weight check:10.2kg



Product weight check



Product weight check:10.2kg



# Final Random Inspection Report



Product weight check



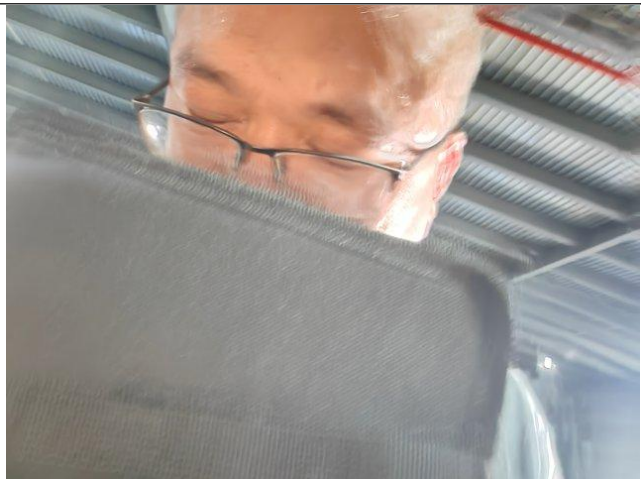
Product weight check:10.2kg



Pull test



Pull test



Smell check



Assembly test



## Other photos



Carton storage



Carton storage



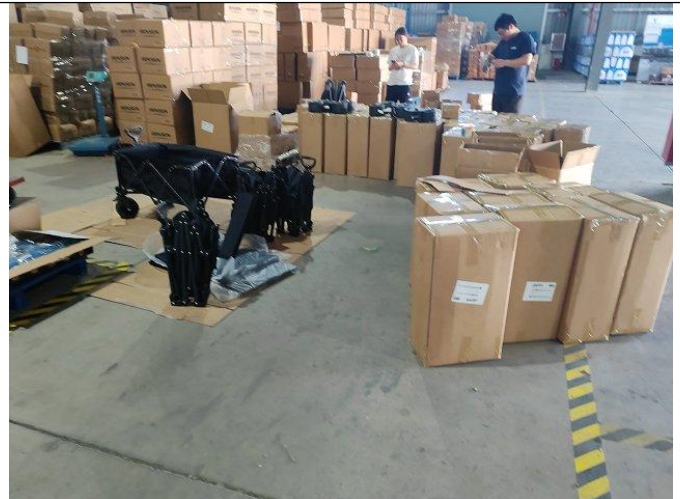
Carton storage



Carton storage



Carton storage



Inspection site

**--The End Of Report--**