



MT-INSPECTION

Final Random Inspection Report

Report No.: MT-20260513-002

GENERAL SUMMARY:

Client:	Hao Natural
PO No.:	-
Item No.:	Milk pasteurization machine
Product Name:	Milk pasteurization machine
Quantity:	1set
Inspection location:	Jining Shandong
Supplier:	Shandong Taike Machinery Equipment Co., Ltd.
Date of inspection:	May-13-2026

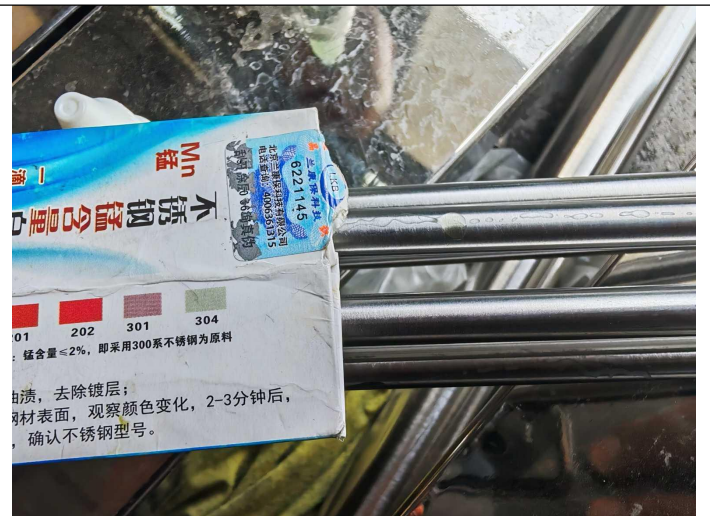


OVERALL CONCLUSION:

Inspection criteria	Passed	Failed	Pending	Comments
Quantity available:	-	-	×	Remark 1,5
Product Conformity:	-	-	×	Remark 2
Workmanship:	-	×	-	Remark 3
Test and measurement:	-	-	×	Remark 4,7,9
Labeling:	-	-	×	Remark 8
Packing and shipping mark:	-	-	×	Remark 1
Result:	<input type="checkbox"/> Acceptable			<input checked="" type="checkbox"/> Reject <input type="checkbox"/> Pending

SPECIAL REMARK:

- 1.Upon the arrival, all products were finished but not packed.
- 2.There's no approved sample providing for reference during inspection.
- 3.Some dent/damage/scratches/dirty mark(multiple defects) on surface of machine. the inspector have reported these defects to the factory and requested that the defective products be addressed.
- 4.Some size and spec. were different from client's spec. Pls check part "PRODUCT SPECIFICATION"
- 5.The spare parts include 3 heating tubes and 1 PT100 sensor.
- 6.For machine operation testing and functional testing, refer to the video.
- 7.The factory does not possess a spectrometer; inspectors utilize material identification reagents for testing, and certificates of raw materials are provided.





MT-INSPECTION

Final Random Inspection Report

Report No.: MT-20260513-002



青拓集团有限公司
TSINGSHA TUNG TUO GROUP CO., LTD.
地址: 福建省福州市闽侯县经济开发区
300 Economic Development Zone
of XianYu, Fu'an Fujian
邮编: 350000
电话: 8593-6090331
传真: 8593-6090331

产品质量证明书 MILL TEST CERTIFICATE

产品名称 Product Name		规格 Specification	重量 Weight	炉号 Heat No.	化学成分(熔体分析) % Chemical Composition (Heat Analysis) %											交货状态 Condition of delivery		证书编号 Certificate No.	
牌号 Grade	规格 Specification	重量 Weight	炉号 Heat No.	C	Si	Mn	P	S	Cr	Ni	Mo	Cu	Ti	N	As	Sn	其他 其他 Hot rolling Hot rolling	4720150219102	
304	1.50x125	24,400	A2501210107	0.002	0.025	0.032	0.003	0.001	18.00	8.00							0.008	0.004	0.002
合计				24,400															

- 8. The machine does not have a complete nameplate; only a motor nameplate is provided.
- 9. Due to insufficient specifications of the power cord in the factory, it is not possible to simultaneously turn on three heating rods. Therefore, the on-site testing can only reach 50°C. The factory explained that if all heating rods are turned on and the temperature is set to 300-400°C.

AVAILABLE QUANTITY:											
Order No.	Item No.	Order Qty		Packed		Not finished		Not packed		Inspect Qty	
		set	ctn	set	ctn	set	ctn	set	ctn	set	ctn
-	Milk pasteurization machine	1	0	0	0	0	0	1	0	1	0
Total:		1	0	0	0	0	0	1	0	1	0

Inspection standard: ANSI/ASQC Z1.4-2003 Sampling plan: Single, Normal Inspection level: 100% AQL: Critical: Not Allowed.	Sample Size: 1set			
	Critical	Major	Minor	
	AQL:	0	2.5	4.0
	Defects Found:	0	1	0
Max. Allowed:	0	0	0	

WORKMANSHIP:						
Item No.	Sample size	Defective rate	Defects Description	Cri	Maj	Min
Milk pasteurization machine	1	100%	Dent/Damage/Scratches/Dirty mark (Multiple defects)	0	1	0
Total defect:				0	1	0
Allowed:				0	0	0
Result:				Failed		

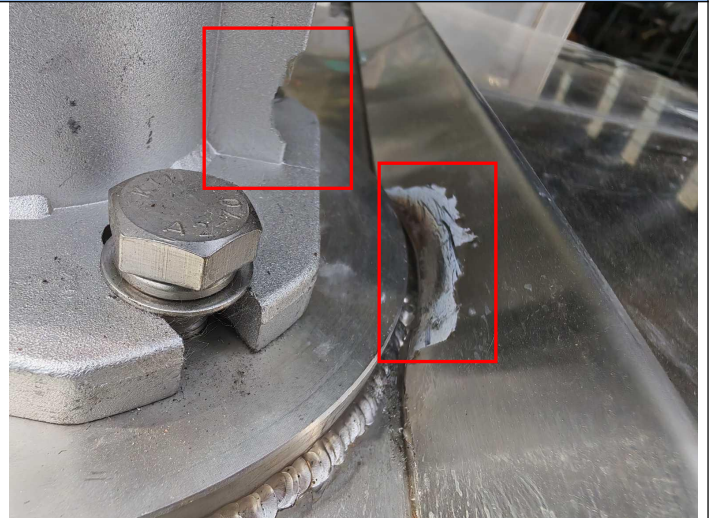
This reflects our findings at the time and place in inspection. This inspection has been carried out to the best of our knowledge and ability and our responsibility is limited to the exercise of reasonable one. This report does not relieve the sellers from their contractual obligations nor prejudice buyer's right for compensation for any apparent and / or hidden defects not detected during our random inspection or occurring thereafter. This report does not evidence shipment.



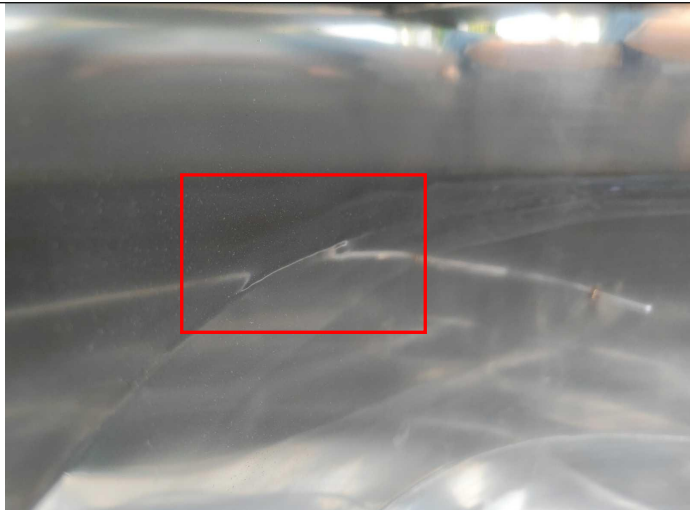
Defect Pictures:



Dent mark



Damage/Dirty mark



Scratches



Scratches /Dirty mark

PRODUCT CONFORMITY & ON-SITE TESTS

Check Points & On-site Tests	Sample Size	Criteria	Result & Remarks
Visual Check (Style, Appearance, Material, Color)	All Sample size	a. Conformance to Style / Appearance / Material / Color compared against: <input type="checkbox"/> Client's / <input type="checkbox"/> Factory's ref. sample. <input checked="" type="checkbox"/> No ref. sample for comparison. (N.B.: Provide details in comment section if 2 or more color shades and/or any color variation is found.) b. Free of nick, burrs, pits, sharp point or any other defects which may affect the product serviceability. c. Finish/ coating is smooth and even without streaks, blisters, wrinkles, or runs. d. Good overall appearance with good	PENDING Remarks :2



MT-INSPECTION

Final Random Inspection Report

Report No.: MT-20260513-002

		alignment of components.	
Material Inspection	1pc	Test the raw materials 304 and 316 for the machine.	PASS
Assembly/ installation check	1pc	Assembly/ installation according to the instruction manual or guide on package to see the component is complete, assembly steps is suitable & the finished product is good performance	PASS
Function check	1pc	All captioned function is well conducted as intended. Such as installation/adjusting, actual using function etc. All of function should be complied with claims.	PASS
Endurance test	1pc	Rated voltage under no load for 4 h, afterwards, the product is open to check if there is any damage inside.	PASS
Capacity check	1pc	Actual finding:Approximately 450L	PENDING Remarks :4
Leak test	1pc	No leakage	PASS
Temperature test	1pc	The machine should be able to set and heat up to the specified temperature	PENDING Remarks :9

PACKING AND ACCESSORIES:

Item No.:	Master shipper (pcs)	Carton size L×W×H (cm)	G.W (Kg)	N.W (Kg)	Color box size L×W×H (cm)	Color box weight(g)	Carton Barcode	Color box Barcode
Milk pasteurization machine	-	-	-	-	-	-	-	-

PRODUCT SPECIFICATION:

Item No.:	Check point	Client Spec.	Ref. Sample	Sample 1#	Sample 2#	Sample 3 #
Milk pasteurization machine	Over all size(mm)	-	-	1206*954*1708 mm	-	-
	Inner tank wall thickness(mm)	3mm	-	2.77mm	-	-
	Outer layer thickness(mm)	1.5-2mm	-	1.99mm	-	-
	Insulation layer thickness(mm)	50mm	-	70mm	-	-
	Heating tube length(mm)	400mm	-	420mm	-	-
	Heating tube size(mm)	DN50	-	51mm	-	-
	Outlet dimensions(mm)	DN32	-	38.1mm	-	-
	Internal dimensions of pot(DxH)	400L	-	D800xH910mm	-	-
	Pot Volume(L)	400L	-	Approximately 450L	-	-
	Weight check(kg)	-	-	-	-	-

EXPORT CARTON INFORMATION:

Carton:	New export carton	-	Sealing:	Opaque gummed tape	-
Fastening:	Metal staples	-		Transparent gummed tape	-
Strapping:	Nylonx2	-		Paper tape	-
Material:	Ply of corrugated paper	-	Others:	-	



Product photo show:



Product view



Product view



Product view



Product view



Product view



Product view



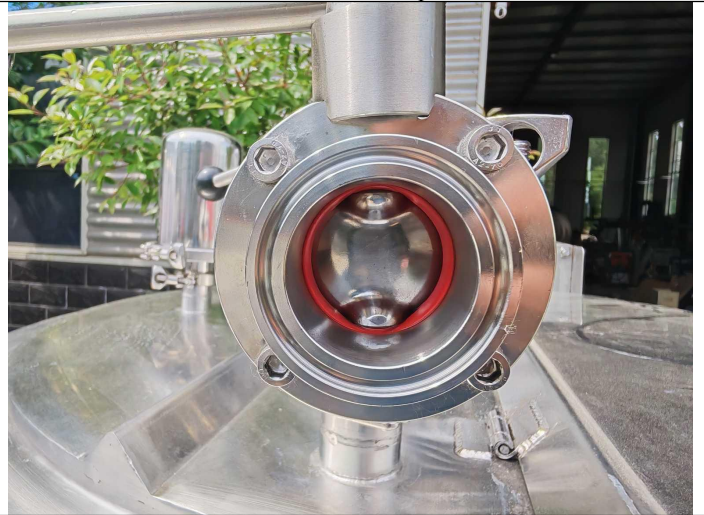
MT-INSPECTION

Final Random Inspection Report

Report No.: MT-20260513-002



Product view



Product view



Product view



Product view



Product view



Product view



MT-INSPECTION

Final Random Inspection Report

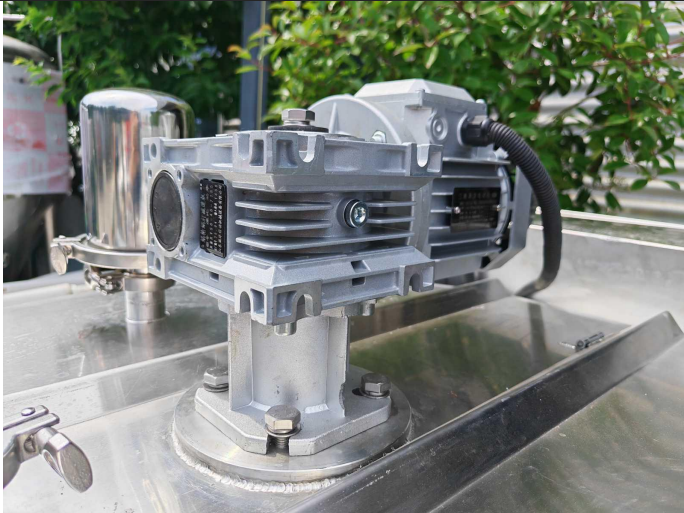
Report No.: MT-20260513-002



Product view



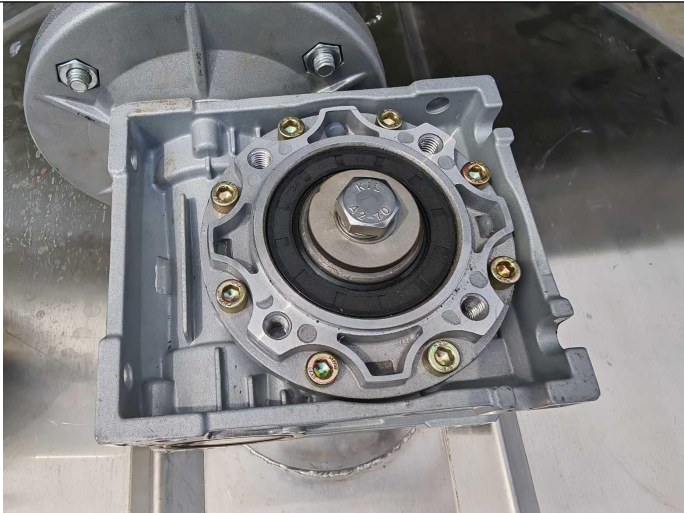
Product view



Product view



Product view



Product view



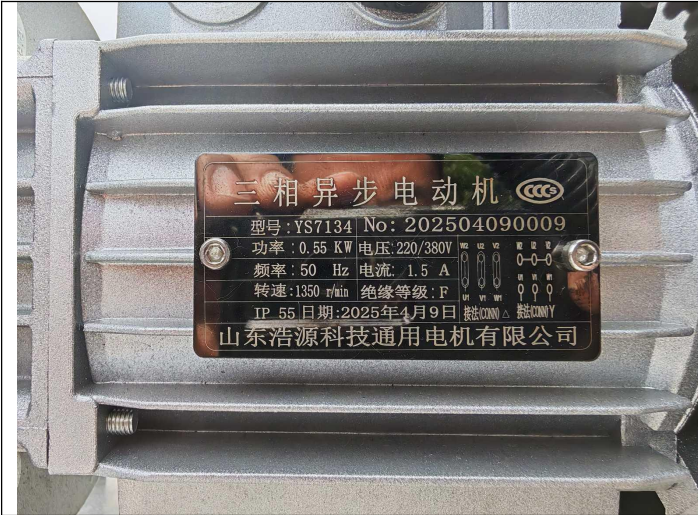
Product view



MT-INSPECTION

Final Random Inspection Report

Report No.: MT-20260513-002



Product view



Product view



Product view



Product view



Product view



Product view



Final Random Inspection Report



Product view



Product view



Product view



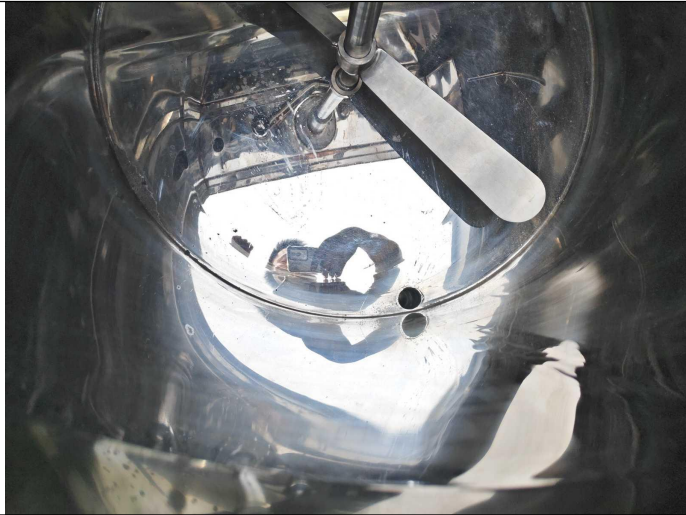
Product view



Product view



Product view



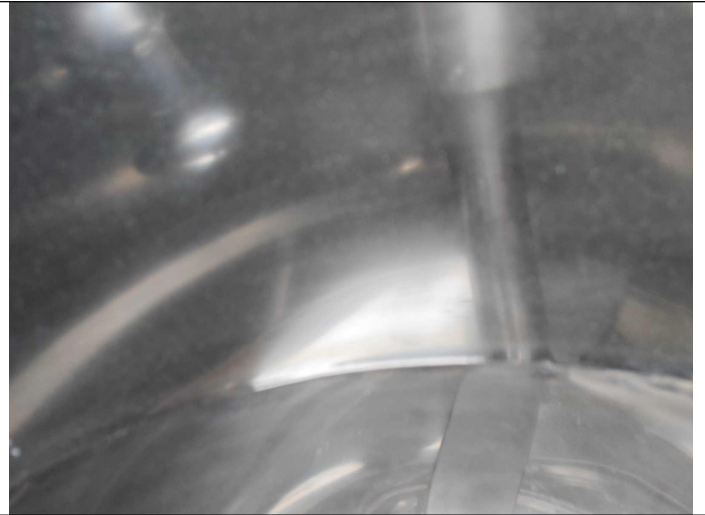
Product view



Product view



Product view



Product view



Product view



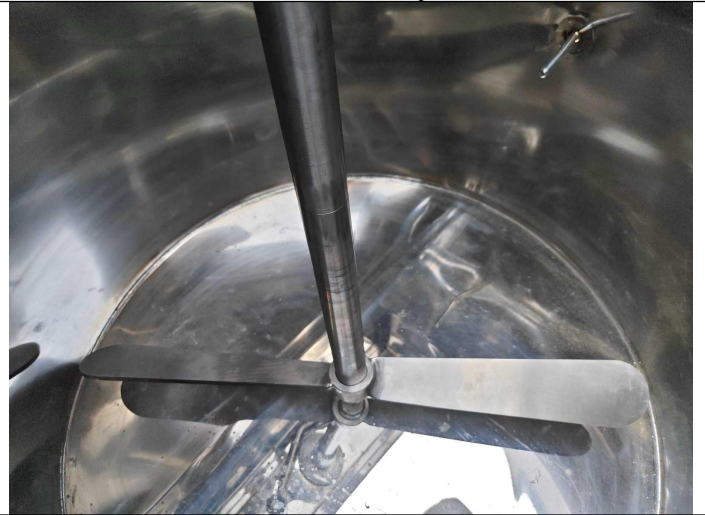
Product view



Final Random Inspection Report



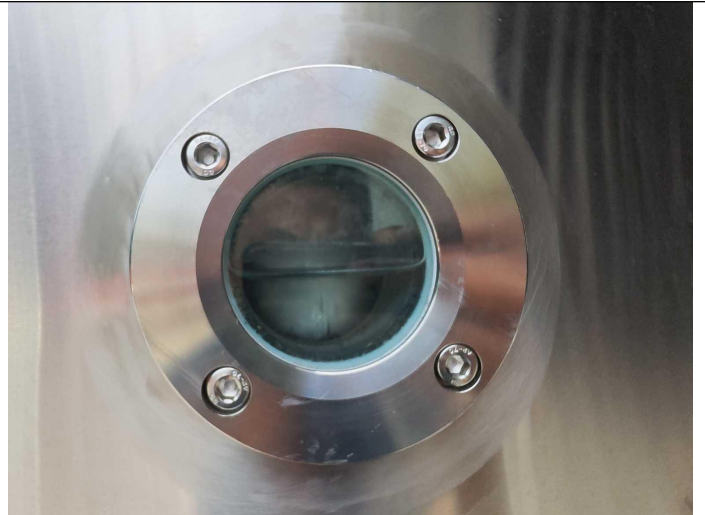
Product view



Product view



Product view



Product view



Product view



Product view



Final Random Inspection Report



Product view



Product view



Product view



Product view



Product view



Product view



Final Random Inspection Report



Product view



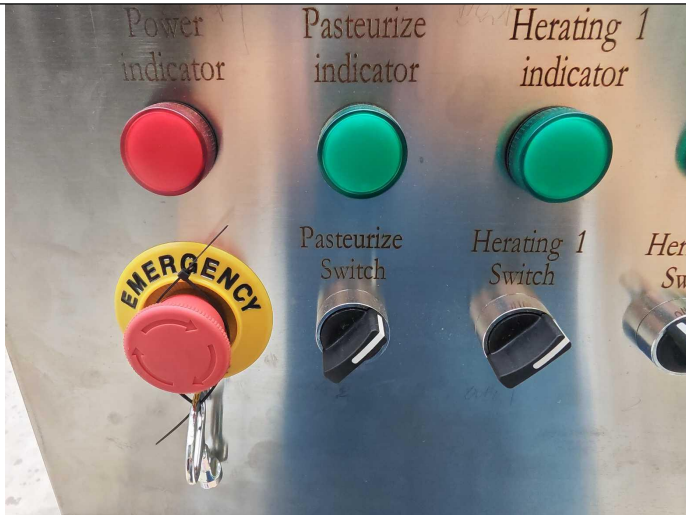
Product view



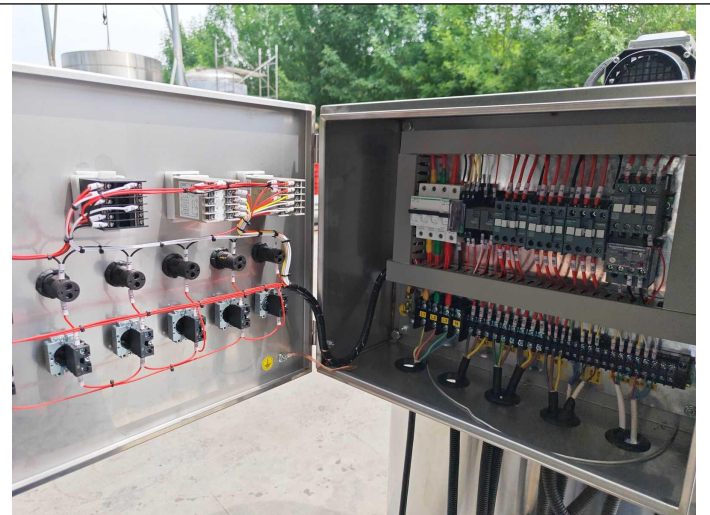
Product view



Product view



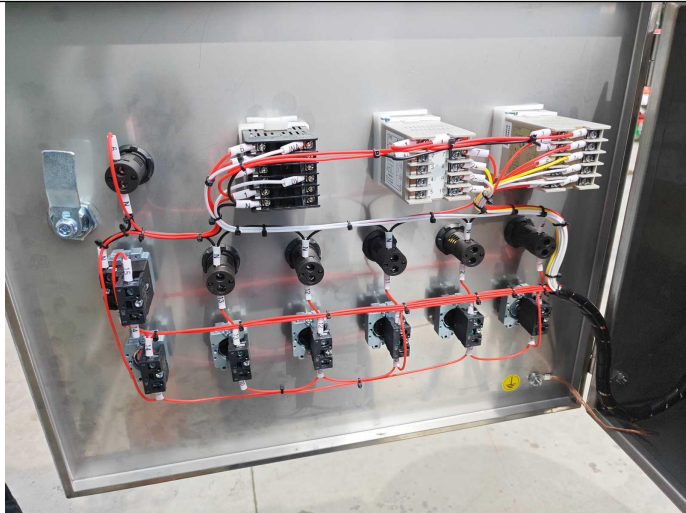
Product view



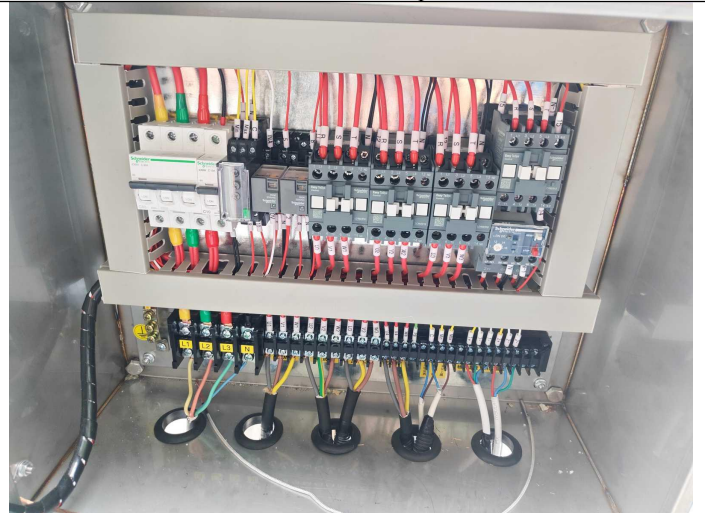
Product view



Final Random Inspection Report



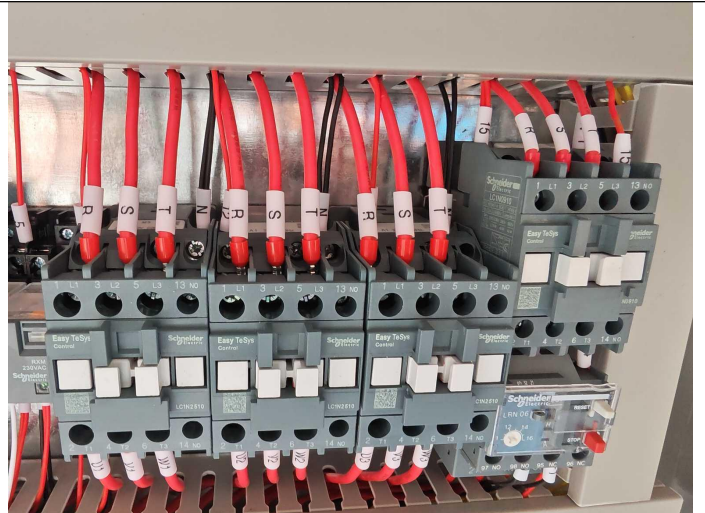
Product view



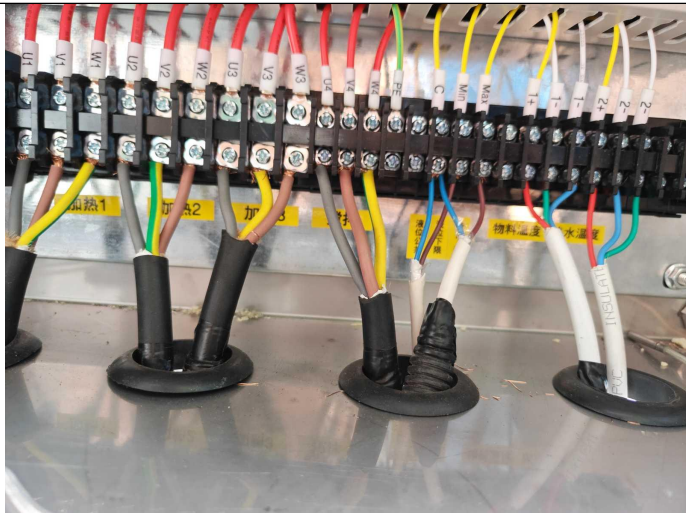
Product view



Product view



Product view



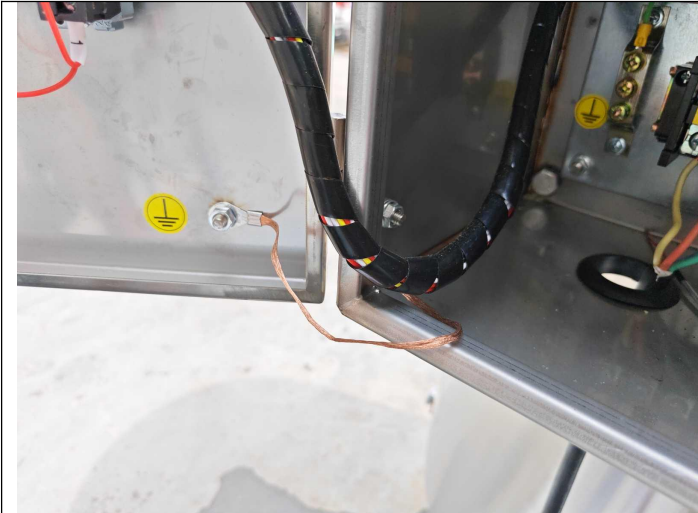
Product view



Product view



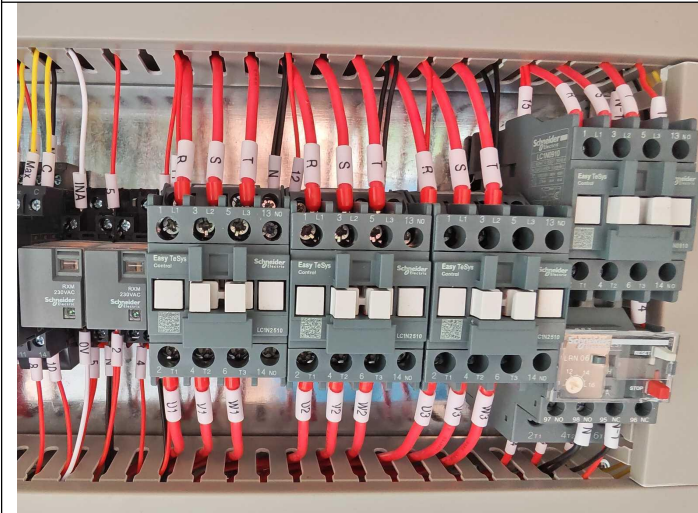
Final Random Inspection Report



Product view



Product view



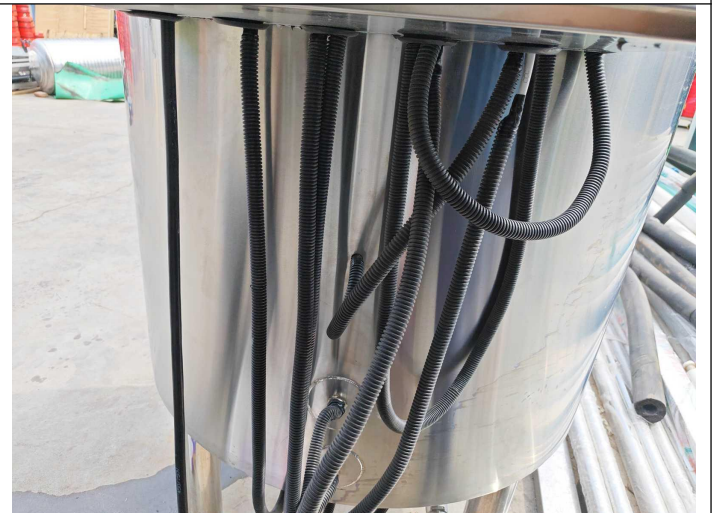
Product view



Product view



Product view



Product view



MT-INSPECTION

Final Random Inspection Report

Report No.: MT-20260513-002



Product view



Product view



Product view



Product view



Product view





MT-INSPECTION

Final Random Inspection Report

Report No.: MT-20260513-002



Product view



Product view



Product view



Product view



Accessories



Accessories



MT-INSPECTION

Final Random Inspection Report

Report No.: MT-20260513-002



Accessories

N/A

Measurement and Test



Product size 1206*954*1708mm



Product size 1206*954*1708mm



Product size 1206*954*1708mm



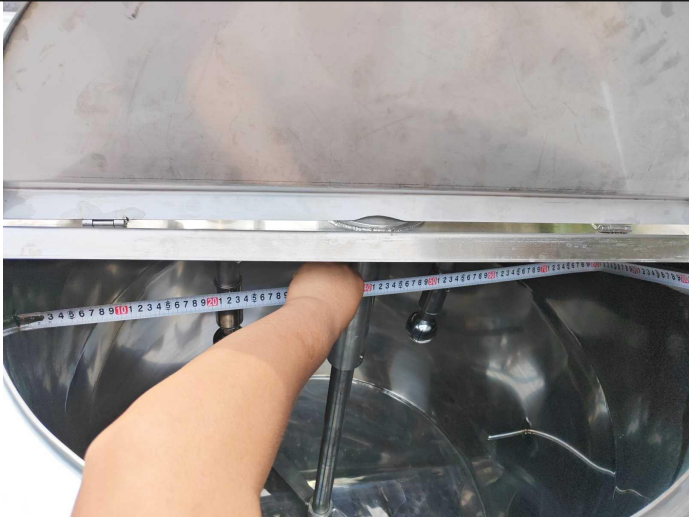
Product size 1206*954*1708mm



Product size 1206*954*1708mm



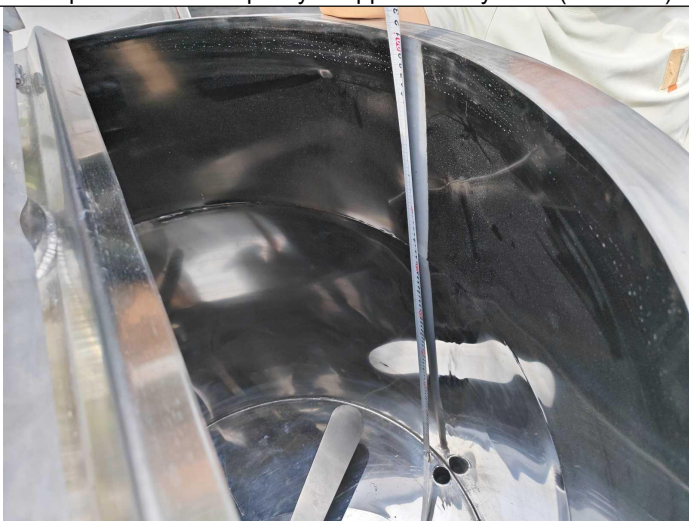
Product size 1206*954*1708mm



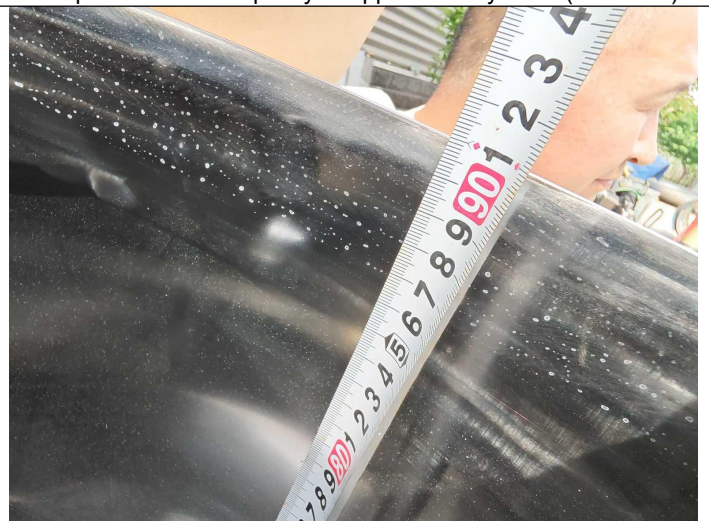
The product has a capacity of approximately 450 L(D:800mm)



The product has a capacity of approximately 450 L(D:800mm)



The product has a capacity of approximately 450 L(H:910mm)



The product has a capacity of approximately 450 L(H:910mm)



Final Random Inspection Report



The inner tank wall thickness is 2.77 mm.



The inner tank wall thickness is 2.79mm.



The outer layer thickness is 1.99 mm.



The outer layer thickness is 1.91 mm.



The insulation layer thickness is approximately 70 mm.



heating tube size 420mm



MT-INSPECTION

Final Random Inspection Report

Report No.: MT-20260513-002



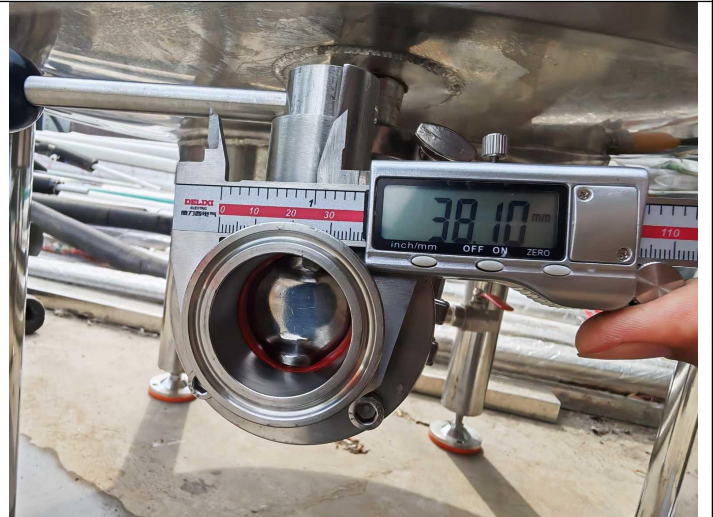
heating tube size 420mm



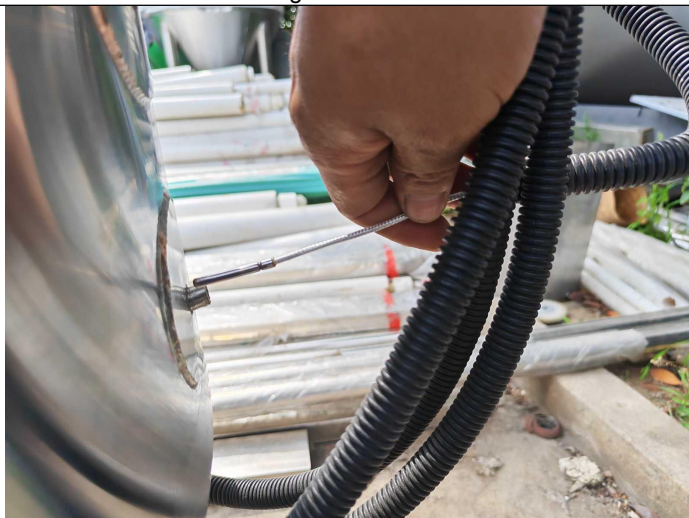
heating tube size DN50



heating tube size DN50



water outlet size DN32



functional check



Material Inspection



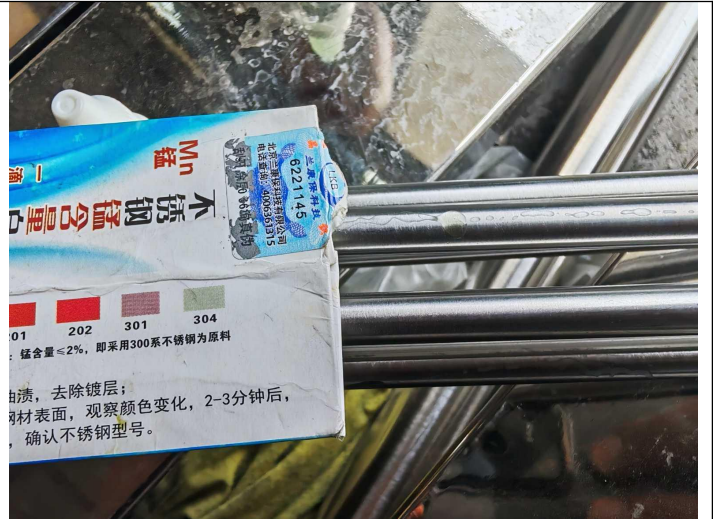
MT-INSPECTION

Final Random Inspection Report

Report No.: MT-20260513-002



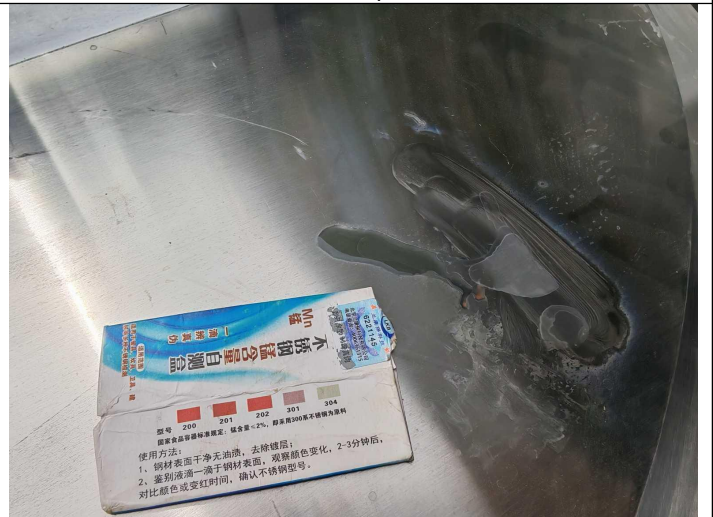
Material Inspection



Material Inspection



Material Inspection



Material Inspection



Material Inspection



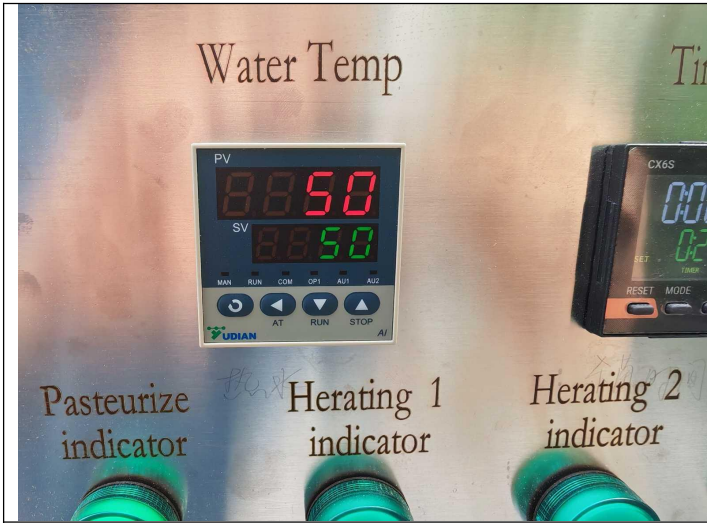
Material Inspection



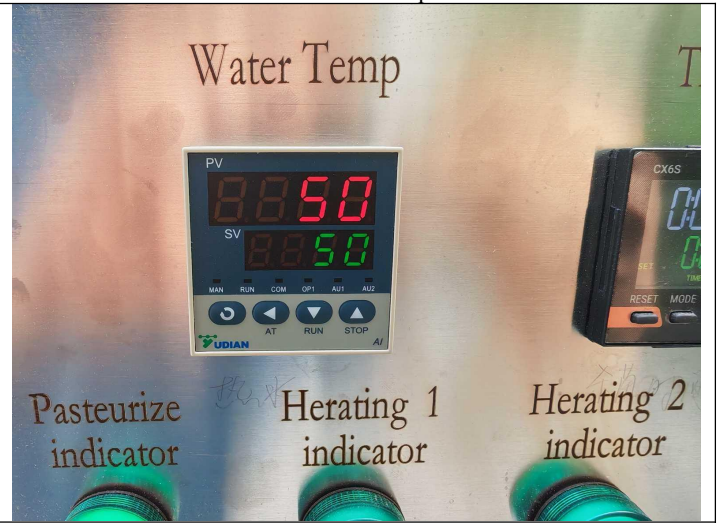
MT-INSPECTION

Final Random Inspection Report

Report No.: MT-20260513-002



Controller Heating Inspection



Controller Heating Inspection

Other photos



Factory gate



Workshop



Workshop



Workshop

--The End Of Report--