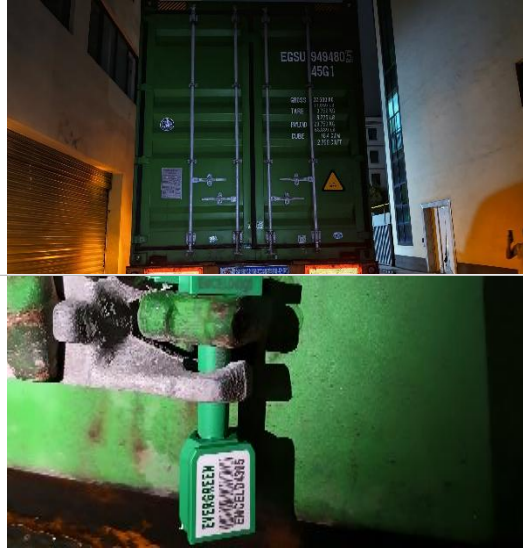


# Previo en origen



# Container Loading Inspection Report/监装报告

## GENERAL DESCRIPTION/总体概述


**Client Name/客户名称:N/A**
**Product description/产品名称:** Electric desktop barbecue grill

**PO NO./订单号:** /

**Letter of credit No./信用证编号:** /

**Loading location/装柜地址:** Yongkang Zhejiang

**Destination country/目的地:** /

**Date/ time of loading/装柜日期:** May 14, 2026

**Inspection date/检验日期:** May 14, 2026

**Supplier/供应商名称:N/A**
**Factory/工厂名称:** N/A

**Inspector/检验员:** BOBZHOU

**Contact/联系人:** CS

## QUANTITY CHECK/检查表

	Passed/通过	Failed/失败	Pending/待定	N/A/不适用	Remark*/备注
A. Quantity & Assortment/数量检查	✓				
B. Condition of Container(s)/集装箱条件	✓				
C. Condition of export cartons/包装箱条件	✓				
D. Shipping marks/唛头信息			✓		1
E. Client special requirement/客户特别要求	✓				

\*Refer to Part REMARKS to see detail/详见部件备注

## OVERALL INSPECTION RESULT/总体检验结果

### REMARKS/备注

#### PROBLEMATIC REMARKS/问题点备注

1. No marking and label information provided, based on actual finding, pls see pictures.

#### SAMPLE COLLECTION RECORD/取样记录

No sample collection record.

Note: **1.** This report reflects our findings at the time and the place of inspection based on random samples selected. **2.** This inspection was carried out to the best of our knowledge and abilities, and our responsibility is limited to the exercise of reasonable one. **3.** This report does not relieve the sellers from their contractual obligations nor does it prejudice buyer's right for compensation for any apparent and/or hidden defects not detected during our inspection or occurring thereafter. **4.** This report does not evidence shipment

Please find our inspections details from next page (Section A - G)/请在下一页 (A-G 部分) 查看我们的检查详情

**A. QUANTITY & ASSORTMENT/数量检验**

Item/SKU No./ 款号	Product Description/ 货物名称	Order Qty (pcs)/ 订单数量(个)	Order Qt(cartons) / 订单箱数(箱)	Declared Qty of Export Pieces/ 出口申报数量(个)	Declared Qty of Export Carton/ 出口申报箱数(箱)
XJD003	Electric desktop barbecue grill	5616	468	5616	468
<b>Total/合计 :</b>		5616	468	5616	468
<b>Result/结果:</b>	PASS				
<b>Remark/备注:</b>					

**B. CONDITION OF CONTAINER(S)/集装箱条件**

✓	PASSED/通过-	
	FAILED/失败-	
	OTHER/其他-	
<b>Result/结果:</b>	Pass/合格	
<b>Remark/备注:</b>	-	

**C. CONDITION OF EXPORT CARTONS/出口包装箱条件**

✓	PASSED/通过-	
	FAILED/失败-	
	OTHER/其他-	
<b>Result/结果:</b>	Pass/合格	
<b>Remark/备注:</b>		

**D. CONDITION OF LOADING LOCATION/装柜地点条件**

<b>Loading Location/装柜地点:</b>	✓	<b>Factory/工厂</b>		<b>Warehouse/仓库</b>		<b>Other/其他:</b>	
<b>Weather/天气:</b>		<b>Rainy/雨天</b>	✓	<b>Sunny/晴天</b>		<b>Snowy/雪天:</b>	<b>Other:</b>
<b>Sheltered/保护:</b>		<b>Yes/有保护</b>	✓	<b>No/无保护</b>			

**E. SHIPPING MARKS/唛头检查**

<b>Shipping Marks (on 2 side)/船唛:</b>	Pending
<b>Side Marks (on 2 side)/侧唛:</b>	Pending
<b>Inner Box Marks (on/side)/内包装唛头</b>	Pending
<b>Result/结果:</b>	Pending/待定
<b>Remark/备注:</b>	No marking and label information provided, based on actual finding, pls see pictures.



F. CONTAINER DETAILS/集装箱装柜详细

1 <sup>st</sup> Container Type 第一柜类型	Container No. 集装箱号	Seal No. 铅封号	Loaded Cargo/被装的货物		
			Item/ Style No. 款号	Loaded Pieces 装柜数量(个)	Loaded Carton 装柜箱数(箱)
40HC	EGSU9494805	EMCELD4305	XJD003	5616	468
Total/合计:				5616	468

G. CLIENT SPECIAL REQUIREMENT/客户特别要求

Client Requirements/客户特别要求		Result/结果
1	Shipping Marks/唛头检查	Pending
2	Label And Barcode/ 标签和条码检查	Pending
3	Product color, size/产品颜色和尺寸检查	PASSED
4	Cubic Meter Check(CBM:M³)/体积检查(立方数)	PASSED
5	Total G.W Check/总毛重检查	PASSED
Result/结果:		Pending
Remark/备注:		1.The total gross weight of this container loading is approximately 9828.0 kg. 2.The total volume of this container loading is 66.718 CBM.

PHOTOS/图片附件

Photos of Product/货物图片:

Photos of item No./款号: XJD003



1 Carton view



2 Carton view



ITEM NO.: XJD003  
QTY: 12 PCS  
N.W.: 17 KGS  
G.W.: 20.8 KGS  
MEAS: 48X45X66 CM  
MADE IN CHINA

3 Carton view



ITEM NO.: XJD003  
QTY: 12 PCS  
N.W.: 17 KGS  
G.W.: 20.8 KGS  
MEAS: 48X45X66 CM  
MADE IN CHINA

4 Carton view



ELECTRIC BARBECUE GRILL  
ELECTRIC BARBECUE GRILL  
ELECTRIC BARBECUE GRILL  
ELECTRIC BARBECUE GRILL  
ELECTRIC BARBECUE GRILL  
ELECTRIC BARBECUE GRILL

5 Open carton



ELECTRIC BARBECUE GRILL  
ELECTRIC BARBECUE GRILL  
ELECTRIC BARBECUE GRILL  
ELECTRIC BARBECUE GRILL  
ELECTRIC BARBECUE GRILL  
ELECTRIC BARBECUE GRILL

6 Open carton



**ELECTRIC BARBECUE GRILL**  
**BBQ** **AIRFLY**

**Specifications**

- 110V~50Hz, 1500Watts with power indicator light
- Detachable, three heights adjustable grill wire - Fast grilling
- Grilling warm keeping - Warmkeeping
- Chrome grill
- Durable stainless steel heating elements
- Easy-to-clean electric barbecue grill
- Automatic control with thermostat
- Cool touch handles
- Household use only

1500W CE

7 Inner box view



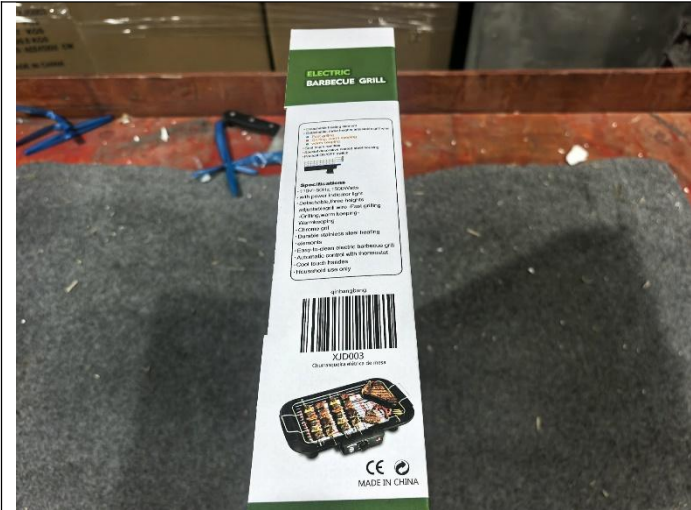
**ELECTRIC BARBECUE GRILL**  
**BBQ** **AIRFLY**

**Specifications**

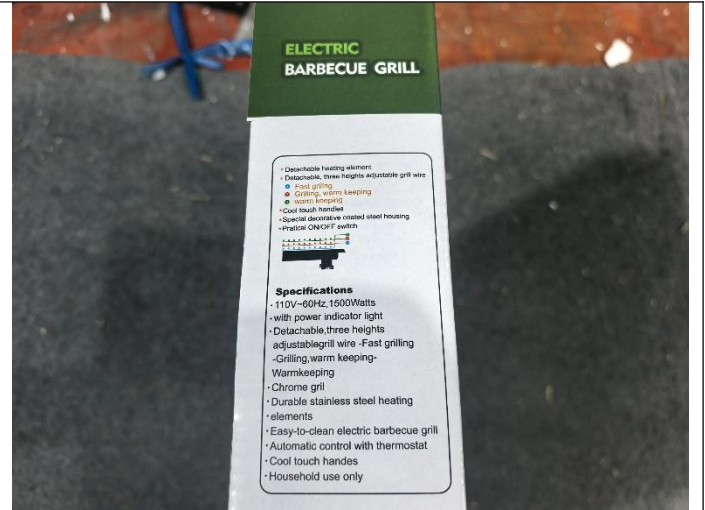
- 110V~50Hz, 1500Watts
- with power indicator light
- Detachable, three heights adjustable grill wire - Fast grilling
- Grilling warm keeping - Warmkeeping
- Chrome grill
- Durable stainless steel heating elements
- Easy-to-clean electric barbecue grill
- Automatic control with thermostat
- Cool touch handles
- Household use only

1500W CE

8 Inner box view



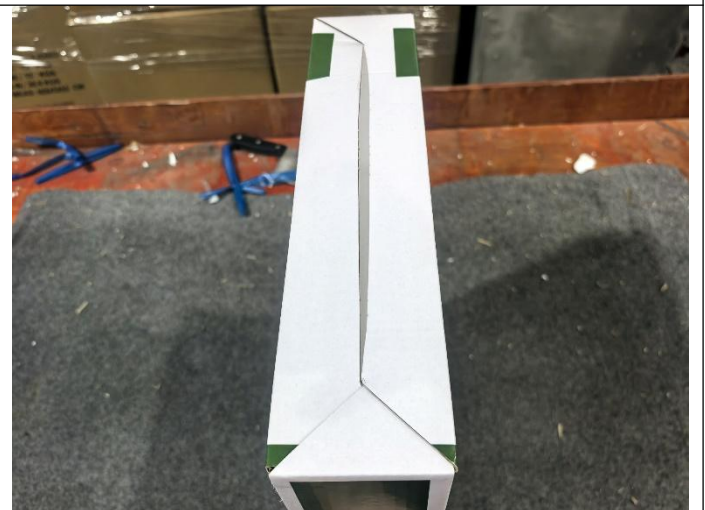
9 Inner box view



10 Inner box view



11 Inner box view



12 Inner box view



13 Inner box view



14 Inner box view



15 Open inner box



16 Open inner box



17 Package view



18 Package view



19 Package view



20 Package view



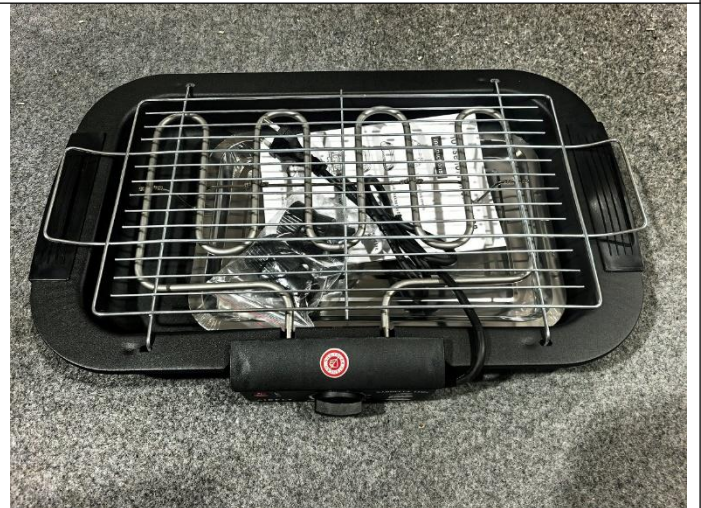
21 Package view



22 Package view



23 Product view



23 Product view



25 Product view



26 Product view



27 Product view



28 Product view



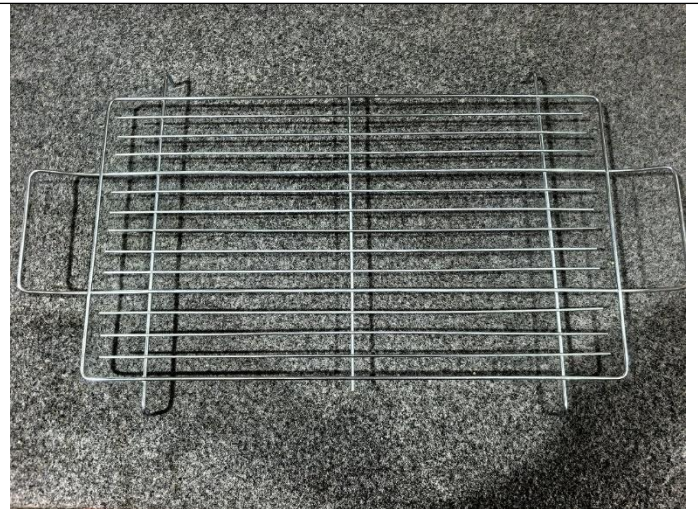
27 Product view



28 Product view



29 Product view



30 Product view



31 Product view



32 Product view



33 Product view



34 Product view



35 Product view



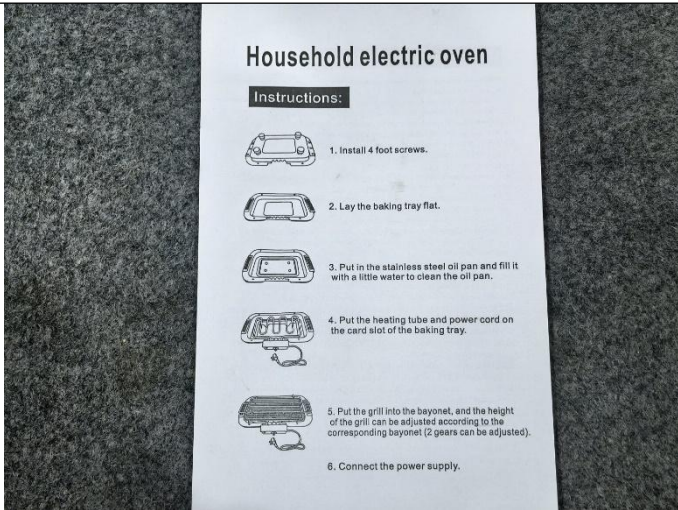
36 Product view



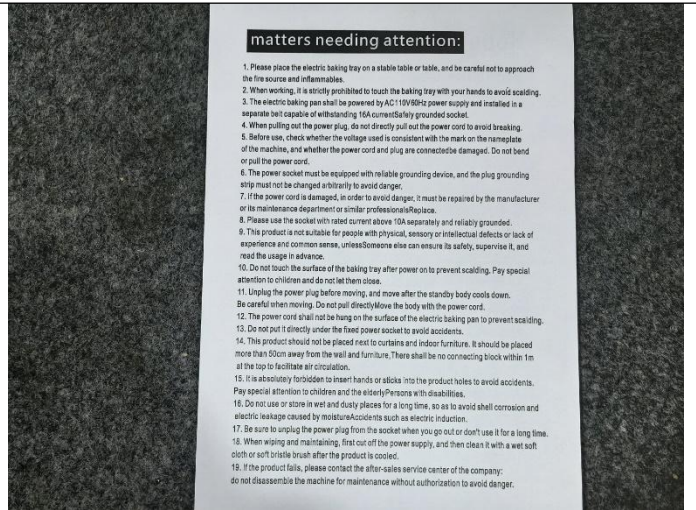
37 Product view



38 Product view



39 Manual view



40 Manual view



41 Carton size view



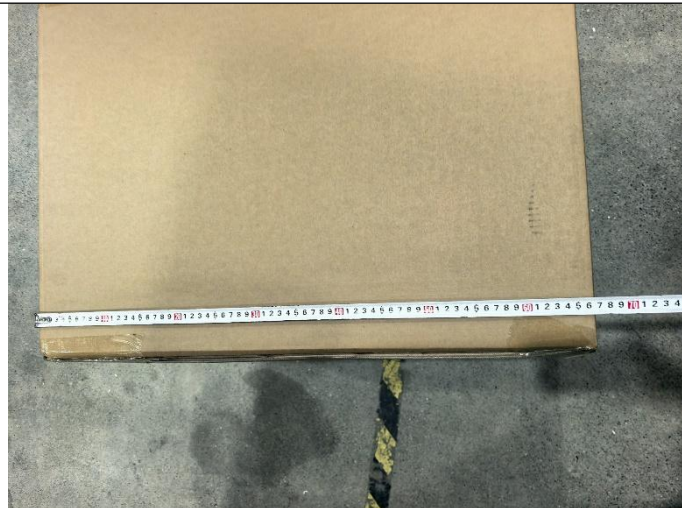
42 Carton size view



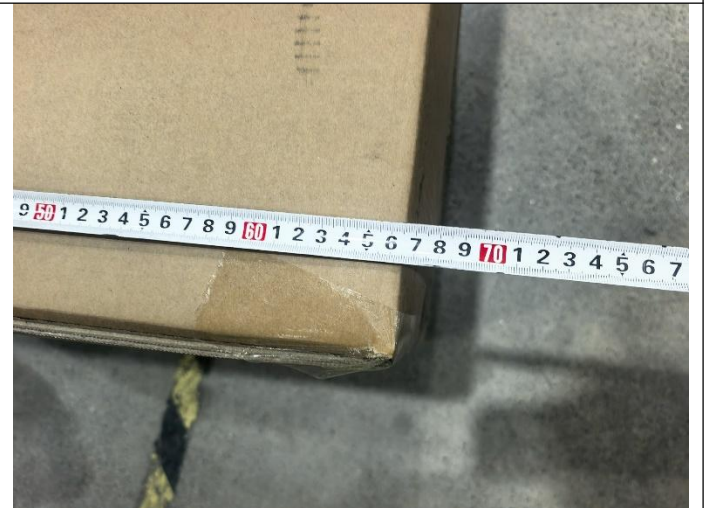
43 Carton size view



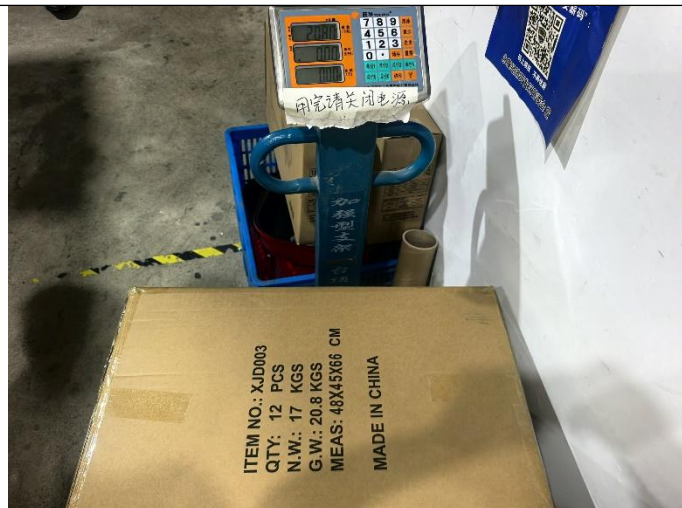
44 Carton size view



45 Carton size view



46 Carton size view



47 Carton weight view



48 20.80kgs



Photos of loading container/装柜图片: container number:EGSU9494805



1 The truck view



2 The container view



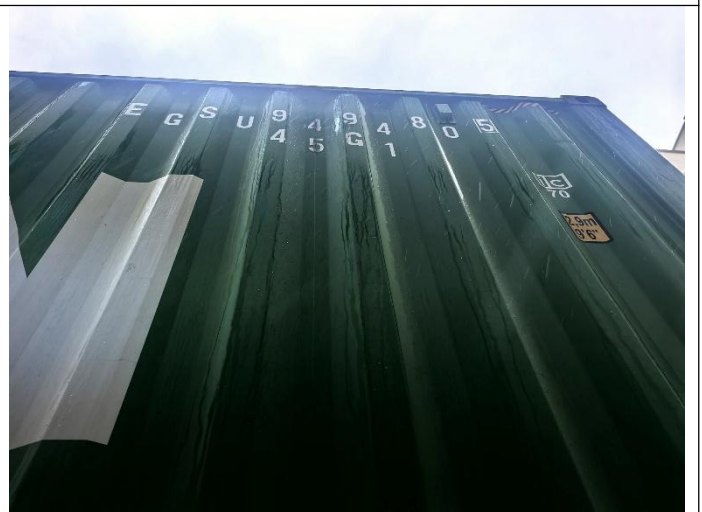
3 The container view



4 The container view



5 The container view



6 The container view:EGSU9494805



7 The container view:EGSU9494805



8 The container view:EGSU9494805



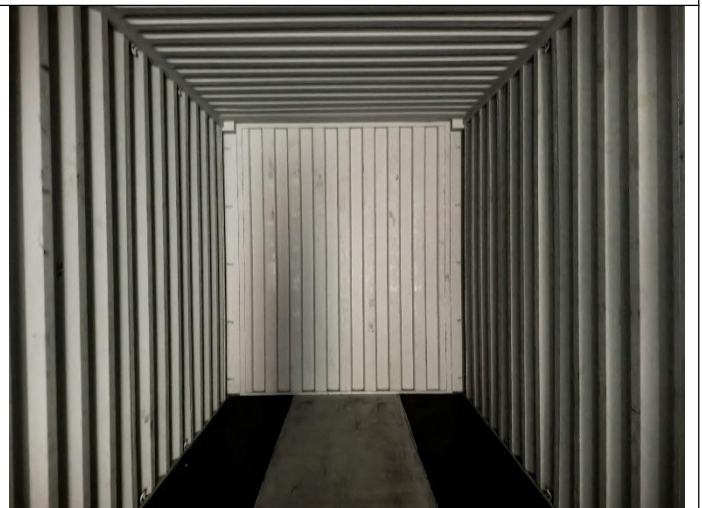
9 The empty container view



10 The empty container view:EGSU9494805



11 The empty container view



12 The empty container view



13 The empty container view



14 The empty container view



15 The empty container view



16 The empty container view:EGSU9494805



17 Light leakage check



18 Loading



19 1/5 loading



20 1/5 loading



21 2/5 loading



22 1/2 loading



23 3/5 Loading



24 Full loading



25 Half close door



26 Sealed door(container number:EGSU9494805)



27 Seal the door



28 Seal number:EMCELD4305

Other pictures/其他辅助照片



1 Goods in warehouse



2 Goods in warehouse



MT-INSPECTION

Report No. :MT-CLS-20260514-004



3 Goods in warehouse



4 Goods in warehouse

## The End of Report/报告结束

**Note: 1.** This report reflects our findings at the time and the place of inspection based on random samples selected. **2.** This inspection was carried out to the best of our knowledge and abilities, and our responsibility is limited to the exercise of reasonable one. **3.** This report does not relieve the sellers from their contractual obligations nor does it prejudice buyer's right for compensation for any apparent and/or hidden defects not detected during our inspection or occurring thereafter. **4.** This report does not evidence shipment.