

Previo en origen



Container Loading Inspection Report/监装报告

GENERAL DESCRIPTION/总体概述



Client Name/客户名称:N/A	
Product description/产品名称:	Steam cleaner
PO NO./订单号:	/
Letter of credit No./信用证编号:	/
Loading location/装柜地址:	Ruian, Wenzhou
Destination country/目的地:	/
Date/ time of loading/装柜日期:	May 15, 2026
Inspection date/检验日期:	May 15, 2026
Supplier/供应商名称:Ruian Yaxu Electric Appliances	
Factory/工厂名称:	Ruian Yaxu Electric Appliances
Inspector/检验员:	TXM
Contact/联系人:	Cs manager

QUANTITY CHECK/检查表

	Passed/通过	Failed/失败	Pending/待定	N/A/不适用	Remark*/备注
A. Quantity & Assortment/数量检查	✓				
B. Condition of Container(s)/集装箱条件	✓				
C. Condition of export cartons/包装箱条件	✓				
D. Shipping marks/唛头信息			✓		1
E. Client special requirement/客户特别要求				✓	

*Refer to Part REMARKS to see detail/详见部件备注

OVERALL INSPECTION RESULT/总体检验结果

REMARKS/备注

PROBLEMATIC REMARKS/问题点备注

1. No marking and label information provided, based on actual finding, pls see pictures.

SAMPLE COLLECTION RECORD/取样记录

No sample collection record.

Note: **1.** This report reflects our findings at the time and the place of inspection based on random samples selected. **2.** This inspection was carried out to the best of our knowledge and abilities, and our responsibility is limited to the exercise of reasonable one. **3.** This report does not relieve the sellers from their contractual obligations nor does it prejudice buyer's right for compensation for any apparent and/or hidden defects not detected during our inspection or occurring thereafter. **4.** This report does not evidence shipment

Please find our inspections details from next page (Section A - G)/请在下一页 (A-G 部分) 查看我们的检查详情



A. QUANTITY & ASSORTMENT/数量检验

Item/SKU No./ 款号	Product Description/ 货物名称	Order Qty (pcs)/ 订单数量(个)	Order Qt(cartons) / 订单箱数(箱)	Declared Qty of Export Pieces/ 出口申报数量(个)	Declared Qty of Export Carton/ 出口申报箱数(箱)
XJD001	Steam cleaner	1998	167	1998	167
XJD002	Steam cleaner	5382	449	5382	449
Total/合计 :		7380	616	7380	616
Result/结果:	Pass				
Remark/备注:					

B. CONDITION OF CONTAINER(S)/集装箱条件

✓	PASSED/通过-	
	FAILED/失败-	
	OTHER/其他-	
Result/结果:	Pass/合格	
Remark/备注:	-	

C. CONDITION OF EXPORT CARTONS/出口包装箱条件

✓	PASSED/通过-	
	FAILED/失败-	
	OTHER/其他-	
Result/结果:	Pass/合格	
Remark/备注:		

D. CONDITION OF LOADING LOCATION/装柜地点条件

Loading Location/装柜地点:	✓	Factory/工厂		Warehouse/仓库		Other/其他:	
Weather/天气:	✓	Rainy/雨天		Sunny/晴天		Snowy/雪天:	Other:
Sheltered/保护:		Yes/有保护	✓	No/无保护			

E. SHIPPING MARKS/唛头检查

Shipping Marks (on 2 side)/船唛:	Pending	
Side Marks (on 2 side)/侧唛:	Pending	
Inner Box Marks (on/side)/内包装唛头	Pending	
Result/结果:	Pending/待定	
Remark/备注:	No marking and label information provided, based on actual finding, pls see pictures.	



F. CONTAINER DETAILS/集装箱装柜详细

1 st Container Type 第一柜类型	Container No. 集装箱号	Seal No. 铅封号	Loaded Cargo/被装的货物		
			Item/ Style No. 款号	Loaded Pieces 装柜数量(个)	Loaded Carton 装柜箱数(箱)
40HC	TCKU6894280	ML-CN6471244	XJD001	1998	167
			XJD002	5382	449
Total/合计:				7380	616

G. CLIENT SPECIAL REQUIREMENT/客户特别要求

	Client Requirements/客户特别要求	Result/结果
1	Shipping Marks/唛头检查	Pending
2	Label And Barcode/ 标签和条码检查	Pending
3	Product color, size/产品颜色和尺寸检查	PASSED
4	Cubic Meter Check(CBM:M³)/体积检查(立方数)	PASSED
5	Total G.W Check/总毛重检查	PASSED
Result/结果: Pending		
Remark/备注:		1.The total gross weight of this container loading is approximately 11493.9 kg . 2.The total volume of this container loading is 73.14 CBM .

PHOTOS/图片附件

Photos of Product/货物图片:

Photos of item No./款号: **XJD001**



1 Carton view

2 Carton view



3 Carton view



4 Carton view



5 Carton view



6 Carton view



7 Carton view



8 Carton view



9 Open carton



10 Open carton



11 Open carton



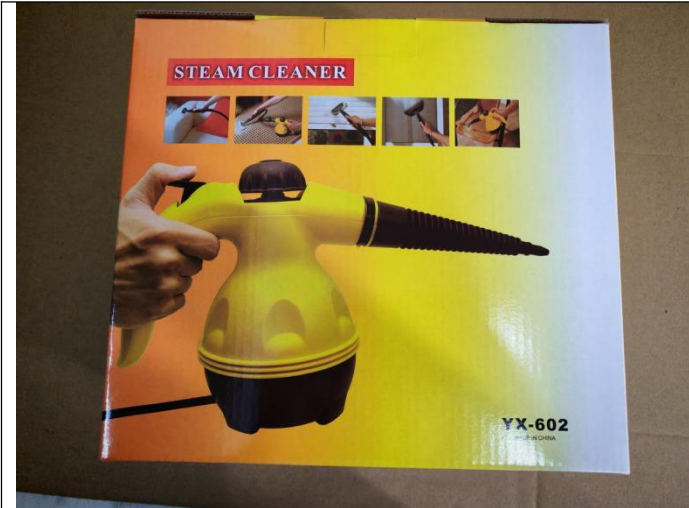
12 Inner box view



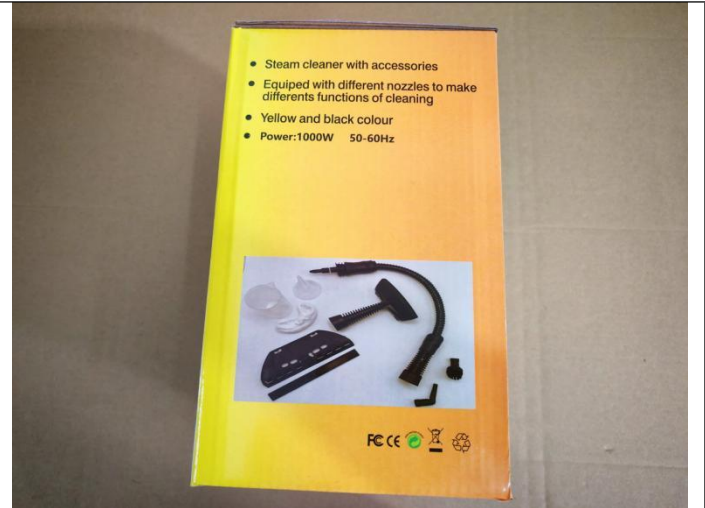
13 Inner box view



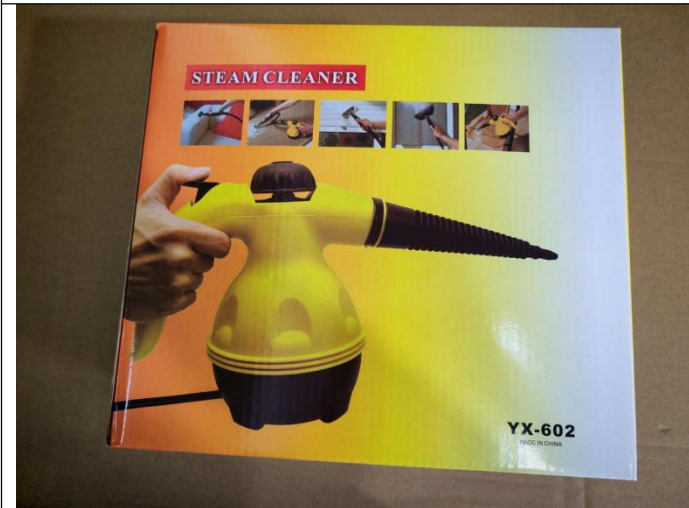
14 Inner box view



15 Inner box view



16 Inner box view



17 Inner box view



18 Inner box view



19 Inner box view



20 open box



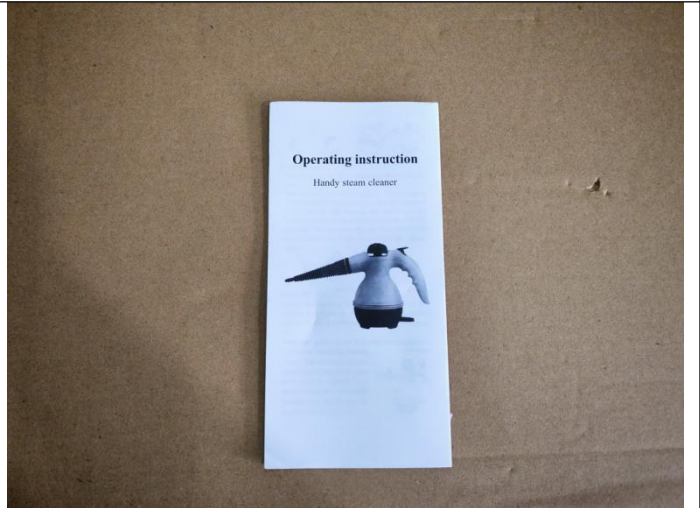
21 Product view



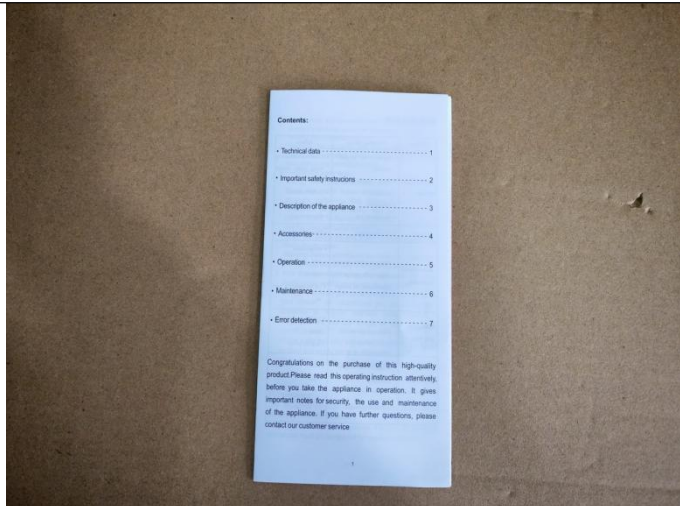
22 Product view



23 Product view



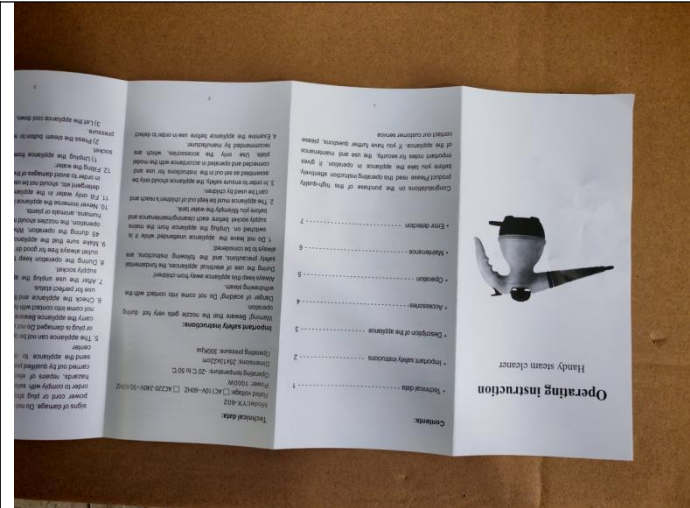
24 Product view



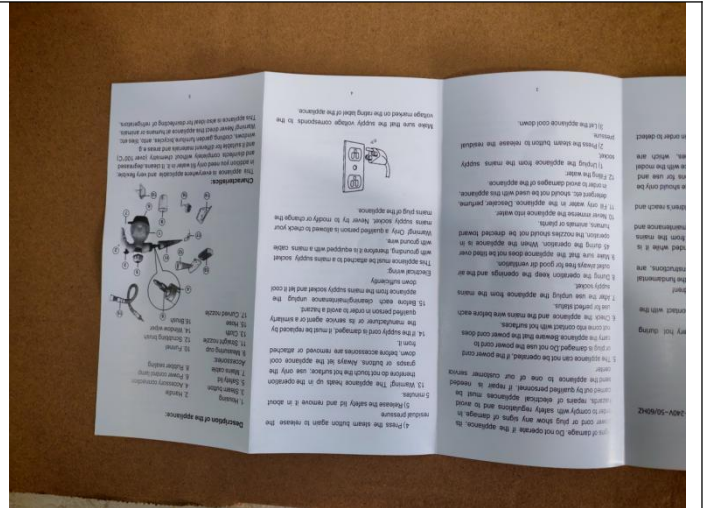
25 Product view



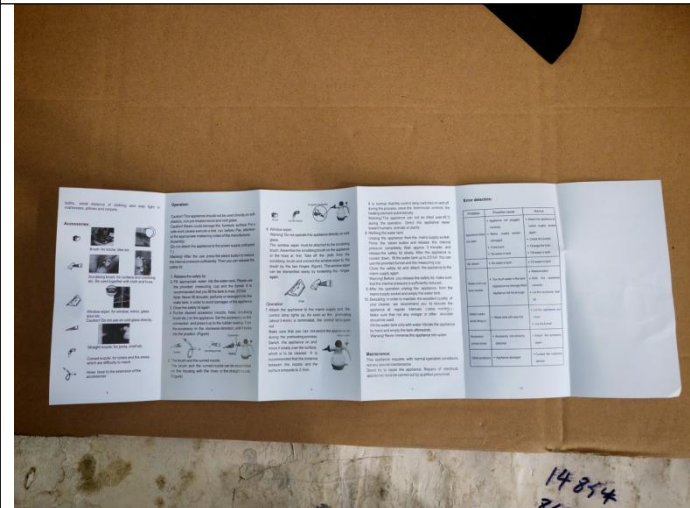
26 Product view



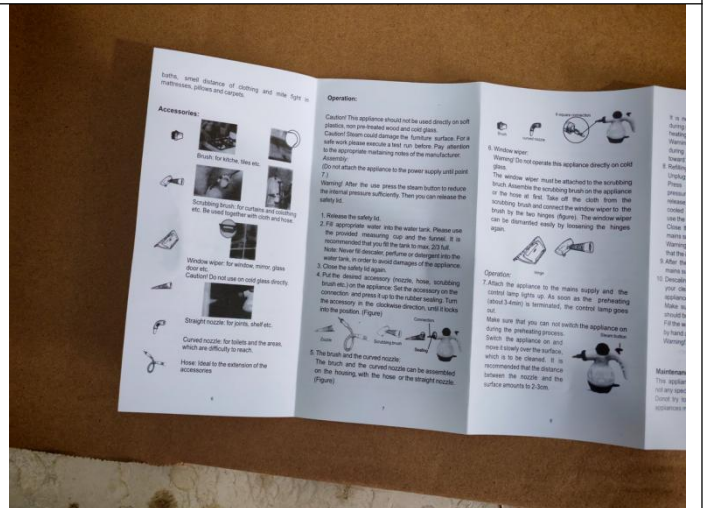
27 Product view



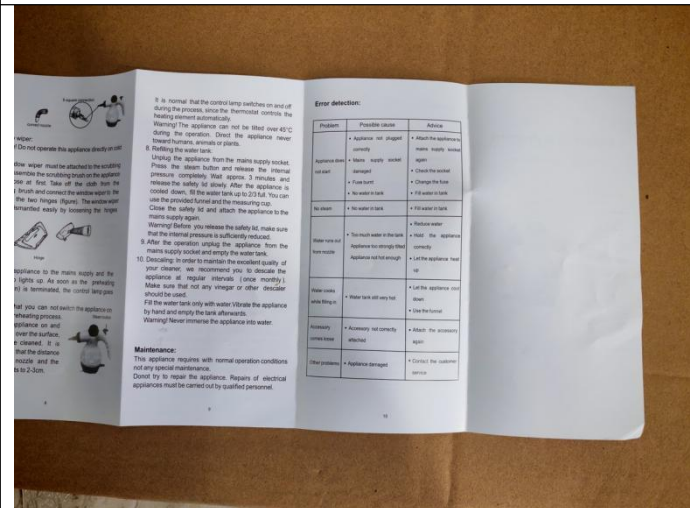
28 Product view



29 Product view



30 Product view



31 Product view



32 Product view



33 Product view



34 Product view



35 Product view



36 Product view



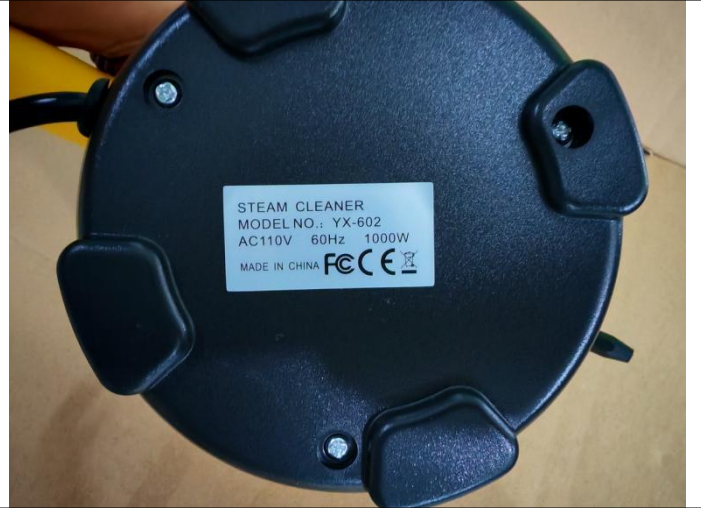
37 Product view



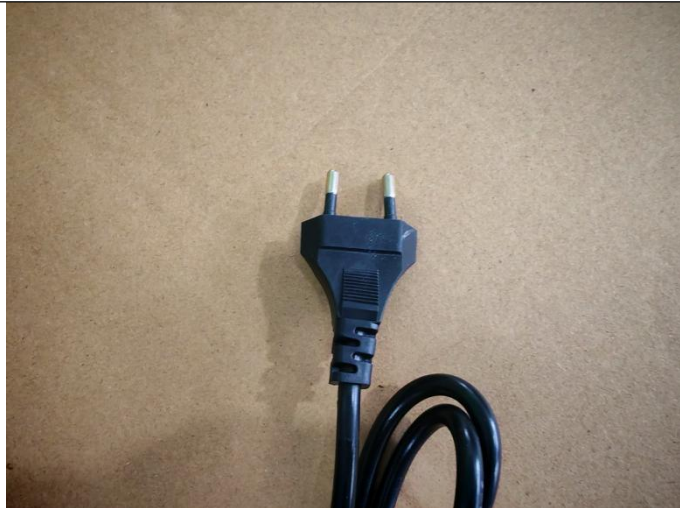
38 Product view



39 Product view



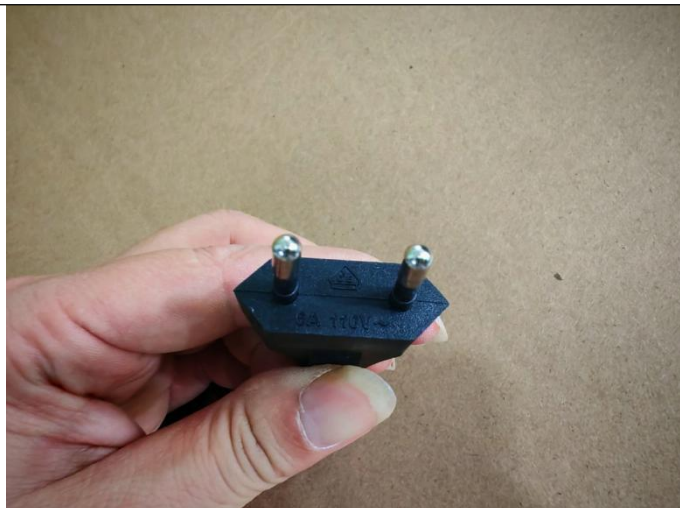
40 Product view



41 Product view



42 Product view



43 Product view



44 Product view



45 Product view



46 Product view



47 Product view



48 Product view



49 Product view



50 Carton dimension check



51 Carton dimension check



52 Carton dimension check



53 Carton dimension check



54 Carton dimension check



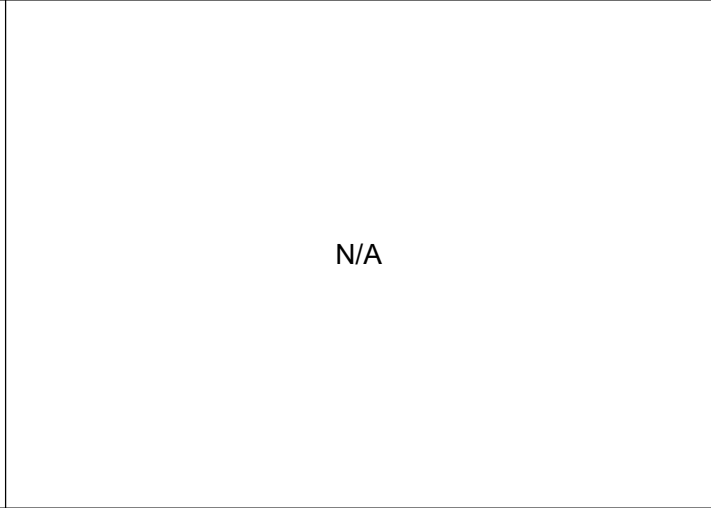
55 Carton dimension check



56 Carton gross weight check



57 Carton gross weight check



N/A

Photos of item No./款号: XJD001(The last carton)



1 Carton view



2 Carton view



3 Carton view



4 Carton view

ITEM NO.: XJD001
 QTY: 6 PCS
 N.W.: 19 KGS
 G.W.: 20 KGS
 MEAS: 58*49*22CM
 MADE IN CHINA

ITEM NO.: XJD001
 QTY: 6 PCS
 N.W.: 19 KGS
 G.W.: 20 KGS
 MEAS: 58*49*22CM
 MADE IN CHINA



5 Carton view



6 Carton view



7 Carton view



8 Carton view



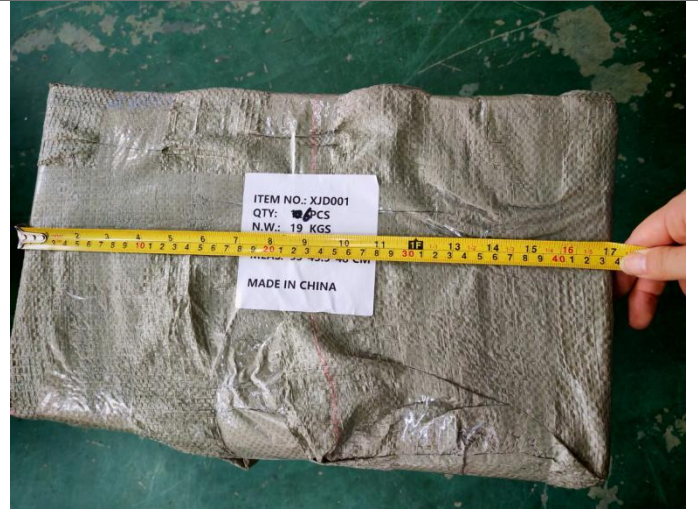
9 Open carton



10 Carton dimension check



11 Carton dimension check



12 Carton dimension check



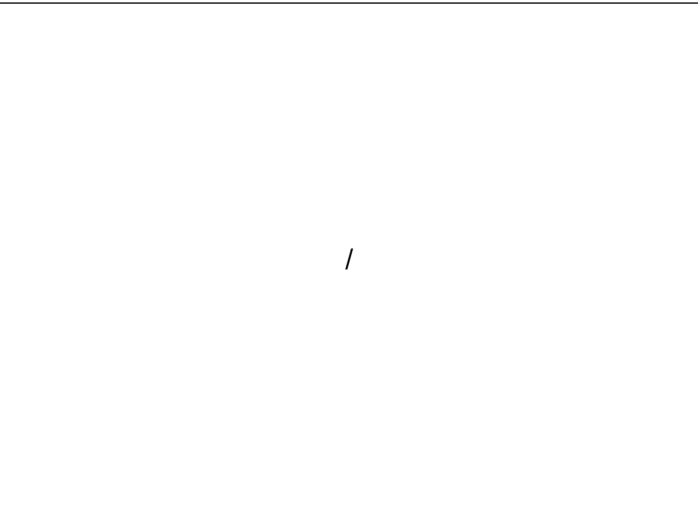
13 Carton dimension check



14 Carton gross weight check



15 Carton gross weight check



/

/

Photos of item No./款号: XJD002



1 Carton view



2 Carton view



3 Carton view



4 Carton view



5 Carton view



6 Carton view



7 Carton view



8 Carton view



9 Open carton



10 Open carton



11 Open carton



12 Inner box view



13 Inner box view



14 Inner box view



15 Inner box view



16 Inner box view



17 Inner box view



18 Inner box view



19 Inner box view



20 open box



21 open box view



22 Product view



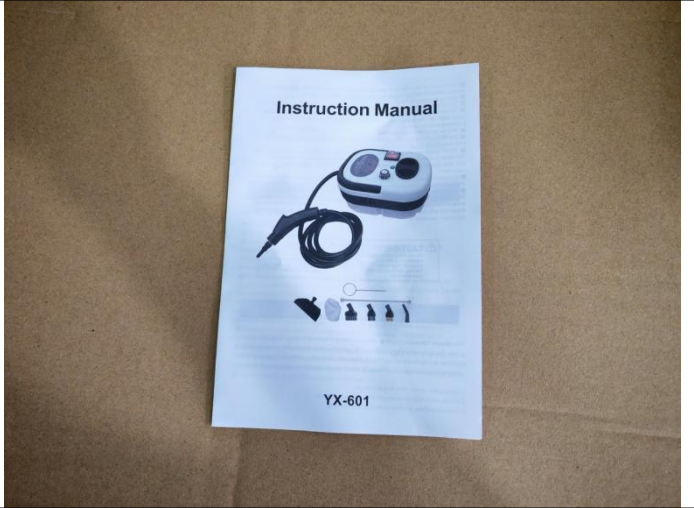
23 Product view



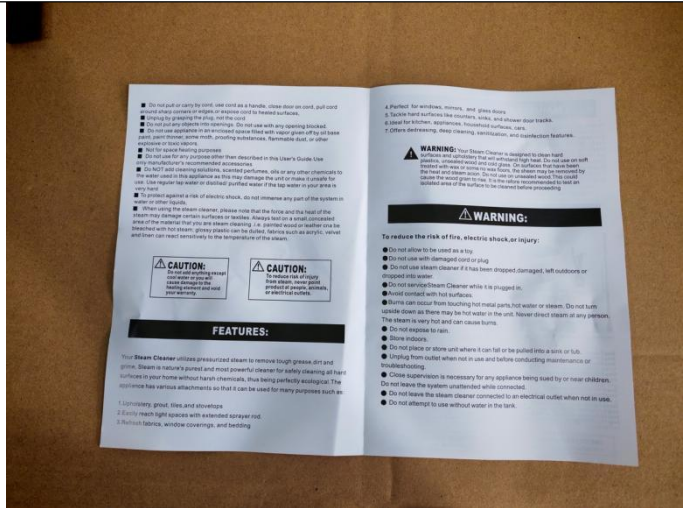
24 Product view



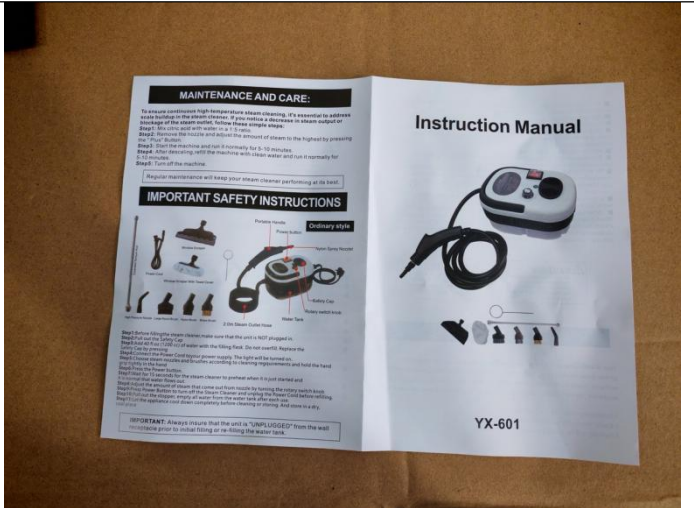
25 Product view



26 Product view



27 Product view



28 Product view



29 Product view



30 Product view



31 Product view



32 Product view



33 Product view



34 Product view



35 Product view



36 Product view



37 Product view



38 Product view



39Product view



40 Product view



41 Product view



42 Product view



43 Product view



44 Product view



45 Product view



46 Product view



47 Product view



48 Carton dimension check



49 Carton dimension check



50 Carton dimension check



51 Carton dimension check



52 Carton dimension check



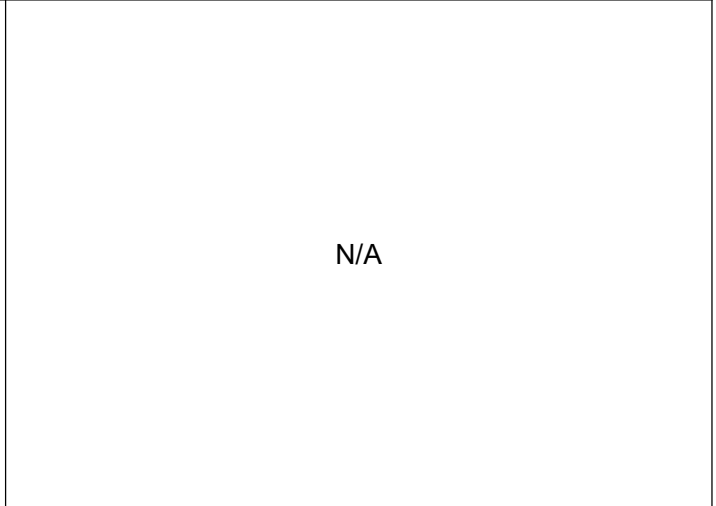
53 Carton dimension check



54 Carton gross weight check



55 Carton gross weight check



N/A

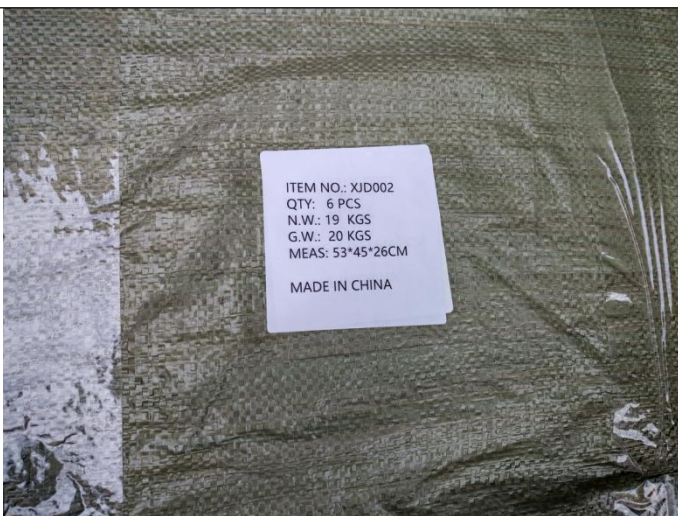
Photos of item No./款号: XJD002(The last carton)



1 Carton view



2 Carton view



3 Carton view



4 Carton view



5 Carton view



6 Carton view



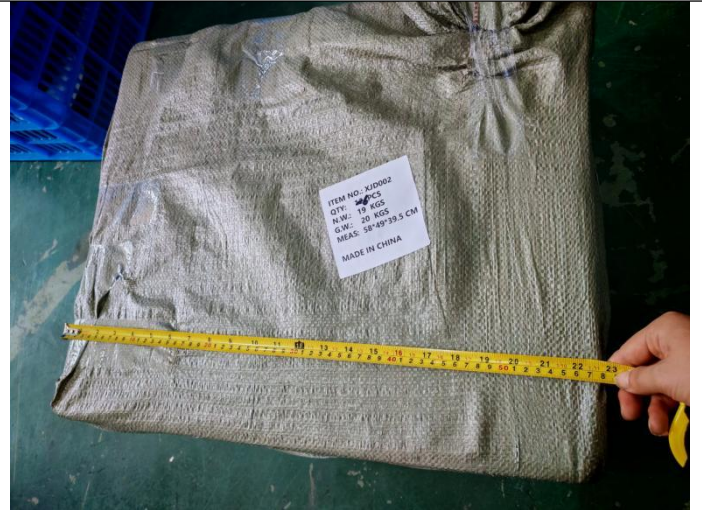
7 Carton view



8 Carton view



9 Open carton



10 Carton dimension check



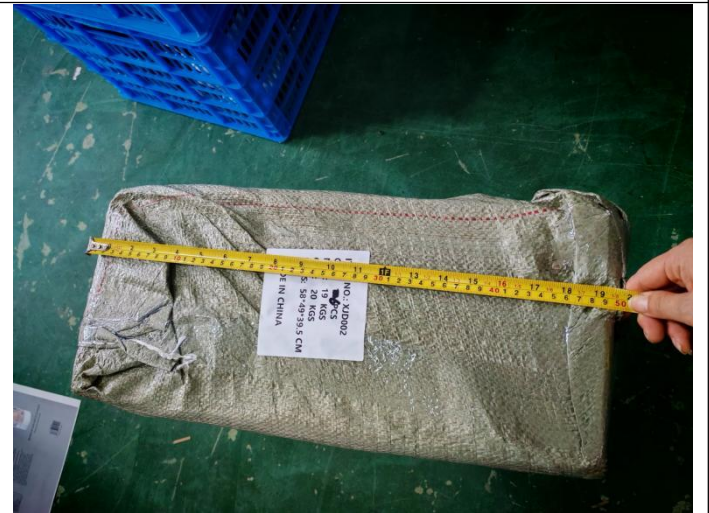
11 Carton dimension check



12 Carton dimension check



13 Carton dimension check



14 Carton dimension check



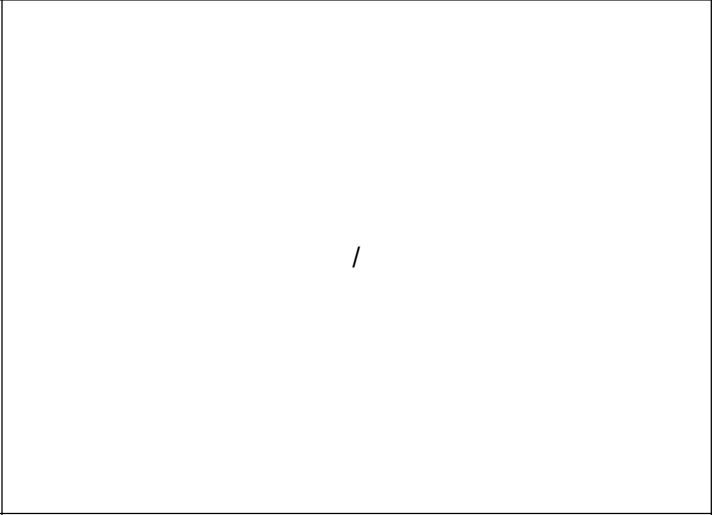
15 Carton dimension check



Carton gross weight check



Carton gross weight check



/

/

Photos of loading container/装柜图片: container number:TCKU6894280



1 The truck view



2 The container view



3 The container view



4 The container view



5 The empty container view



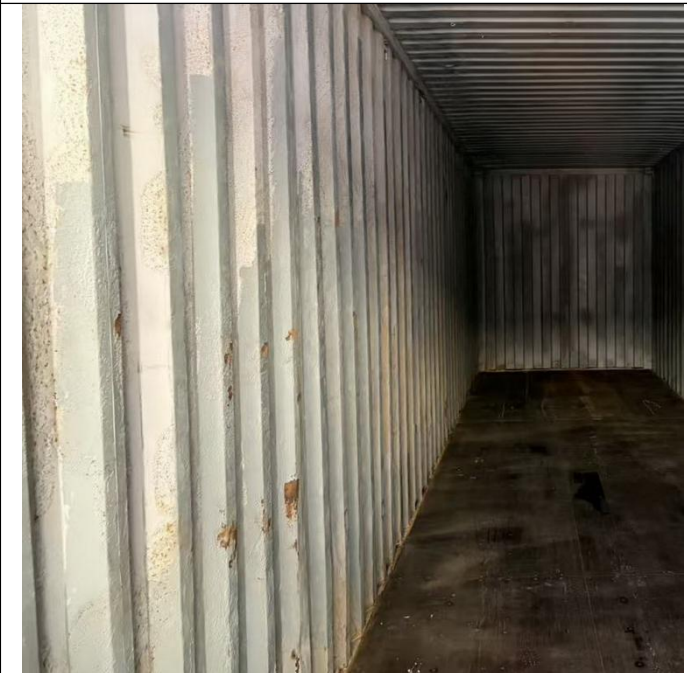
6 The empty container view



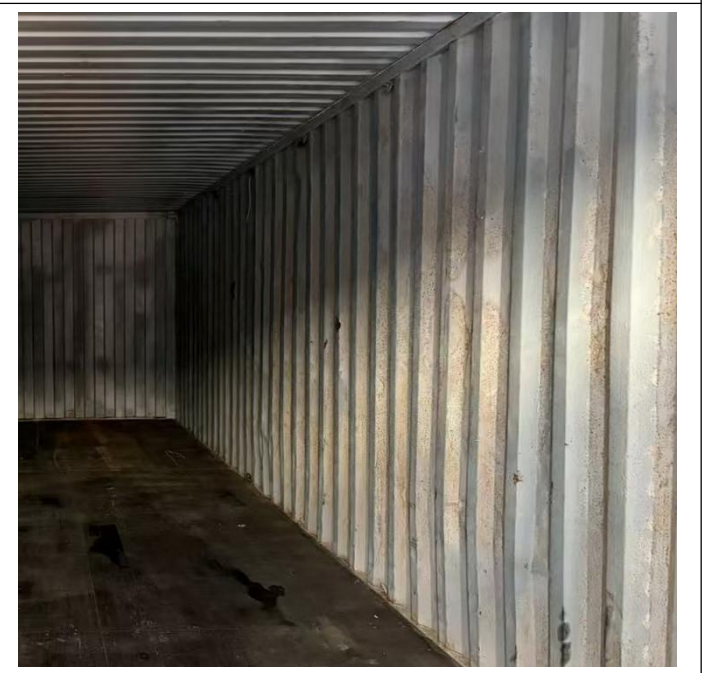
7 The empty container view



8 The empty container view



9 The empty container view



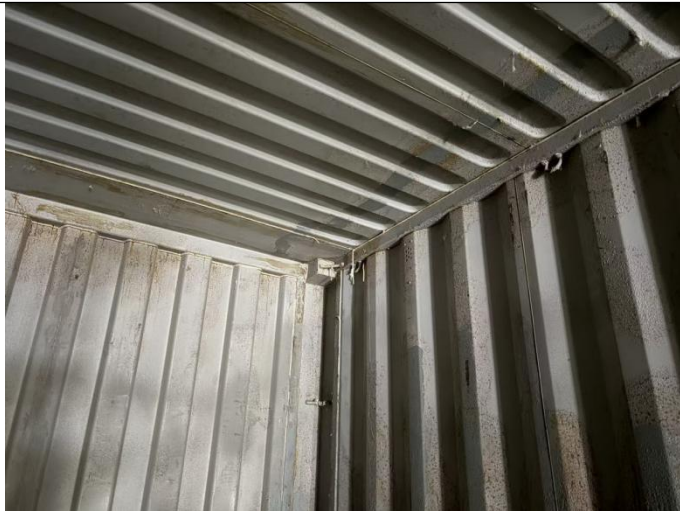
10 The empty container view



11 The empty container view



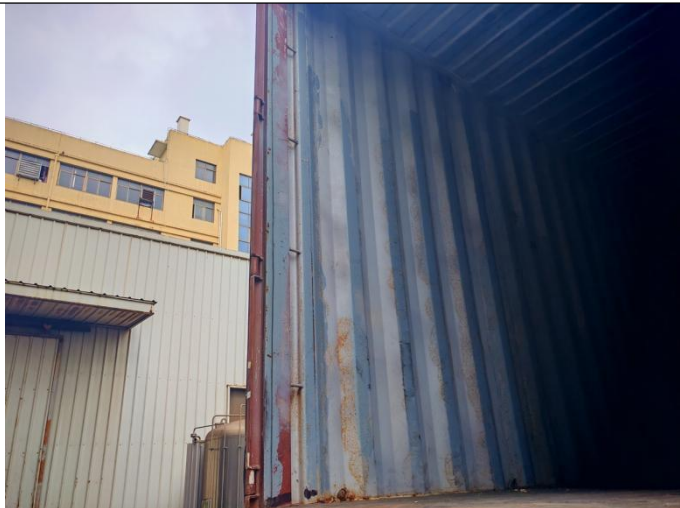
12 The empty container view



13 The empty container view



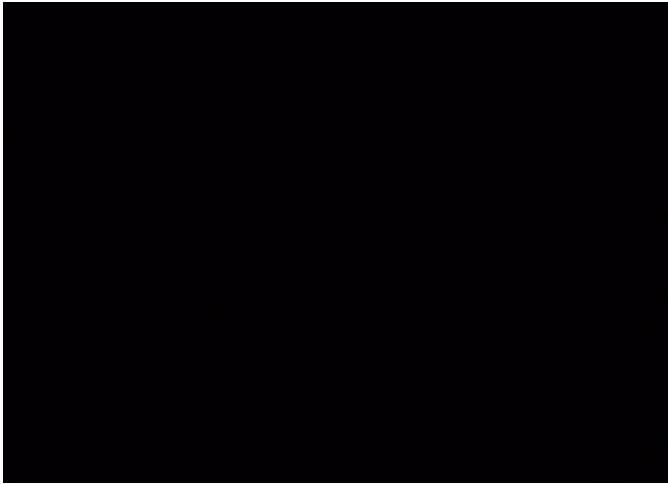
14 The empty container view



15 The empty container view



16 The empty container view



17 Light leakage check



18 Loading process



19 1/4 loading



20 1/2 loading



23 3/4 Loading



24 Full loading



25 Sealing door



26 Sealed door



27 Seal the door



28 Seal number:ML-CN6471244

Other pictures/其他辅助照片



1 Goods in warehouse



2 Goods in warehouse



3 Goods in warehouse

N/A

The End of Report/报告结束

Note: **1.** This report reflects our findings at the time and the place of inspection based on random samples selected. **2.** This inspection was carried out to the best of our knowledge and abilities, and our responsibility is limited to the exercise of reasonable one. **3.** This report does not relieve the sellers from their contractual obligations nor does it prejudice buyer's right for compensation for any apparent and/or hidden defects not detected during our inspection or occurring thereafter. **4.** This report does not evidence shipment.