

Previo en origen



Container Loading Inspection Report/监装报告

GENERAL DESCRIPTION/总体概述



Client Name/客户名称: N/A	
Product description/产品名称:	Practical mixer 搅拌机
PO NO./订单号:	-
Letter of credit No./信用证编号:	-
Loading location/装柜地址:	Zhongshan city,Guangdong Province
Destination country/目的地:	Brazil
Date/ time of loading/装柜日期:	May 21, 2026
Inspection date/检验日期:	May 21, 2026
Supplier/供应商名称: 中山德和电机有限公司	
Factory/工厂名称:	中山德和电机有限公司
Inspector/检验员:	Steven Lin
Contact/联系人:	CS

QUANTITY CHECK/检查表

	Passed/通过	Failed/失败	Pending/待定	N/A/不适用	Remark*/备注
A. Quantity & Assortment/数量检查	✓				
B. Condition of Container(s)/集装箱条件	✓				
C. Condition of export cartons/包装箱条件	✓				
D. Shipping marks/唛头信息	✓				
E. Client special requirement/客户特别要求	✓				

*Refer to Part REMARKS to see detail/详见部件备注

OVERALL INSPECTION RESULT/总体检验结果

REMARKS/备注

PROBLEMATIC REMARKS/问题点备注

N/A

SAMPLE COLLECTION RECORD/取样记录

No sample collection record.

Note: **1.** This report reflects our findings at the time and the place of inspection based on random samples selected. **2.** This inspection was carried out to the best of our knowledge and abilities, and our responsibility is limited to the exercise of reasonable one. **3.** This report does not relieve the sellers from their contractual obligations nor does it prejudice buyer's right for compensation for any apparent and/or hidden defects not detected during our inspection or occurring thereafter. **4.** This report does not evidence shipment

Please find our inspections details from next page (Section A - G)/请在下一页 (A-G 部分) 查看我们的检查详情



A. QUANTITY & ASSORTMENT/数量检验

Item/SKU No./ 款号	Product Description/ 货物名称	Order Qty (pcs)/ 订单数量(个)	Order Qt(cartons) / 订单箱数(箱)	Declared Qty of Export Pieces/ 出口申报数量(个)	Declared Qty of Export Carton/ 出口申报箱数(箱)
XJD004	Practical mixer 搅拌机	6144	512	6144	512
XJD004 color box	XJD004 color box 彩盒	30	1	30	1
Total/合计 :		6174	513	6174	513
Result/结果:	PASS				
Remark/备注:					

B. CONDITION OF CONTAINER(S)/集装箱条件

✓	PASSED/通过-	
	FAILED/失败-	
	OTHER/其他-	
Result/结果:	Pass/合格	
Remark/备注:	-	

C. CONDITION OF EXPORT CARTONS/出口包装箱条件

✓	PASSED/通过-	
	FAILED/失败-	
	OTHER/其他-	
Result/结果:	Pass/合格	
Remark/备注:		

D. CONDITION OF LOADING LOCATION/装柜地点条件

Loading Location/装柜地点:	✓	Factory/工厂		Warehouse/仓库		Other/其他:	
Weather/天气:	✓	Rainy/雨天		Sunny/晴天		Snowy/雪天:	Other:
Sheltered/保护:		Yes/有保护	✓	No/无保护			

E. SHIPPING MARKS/唛头检查

Shipping Marks (on 2 side)/船唛:	Pass
Side Marks (on 2 side)/侧唛:	Pass
Inner Box Marks (on/side)/内包装唛头	Pass
Result/结果:	Pass/合格
Remark/备注:	Customer confirmed shipping mark when insepction.

F. CONTAINER DETAILS/集装箱装柜详细

1 st Container Type 第一柜类型	Container No. 集装箱号	Seal No. 铅封号	Loaded Cargo/被装的货物		
			Item/ Style No. 款号	Loaded Pieces 装柜数量(个)	Loaded Carton 装柜箱数(箱)
40HC	PCIU9439247	CR0687085	XJD004	6144	512
			XJD004 color box	30	1
Total/合计:				6174	513

G. CLIENT SPECIAL REQUIREMENT/客户特别要求

	Client Requirements/客户特别要求	Result/结果
1	Shipping Marks/唛头检查	PASS
2	Label And Barcode/ 标签和条码检查	PASS
3	Product color, size/产品颜色和尺寸检查	PASS
4	Cubic Meter Check(CBM:M ³)/体积检查(立方数)	PASS
5	Total G.W Check/总毛重检查	PASS
Result/结果:		PASS
Remark/备注:		1.The total gross weight of this container loading is approximately 7080.24 kg. 2.The total volume of this container loading is 71.65 CBM.

PHOTOS/图片附件

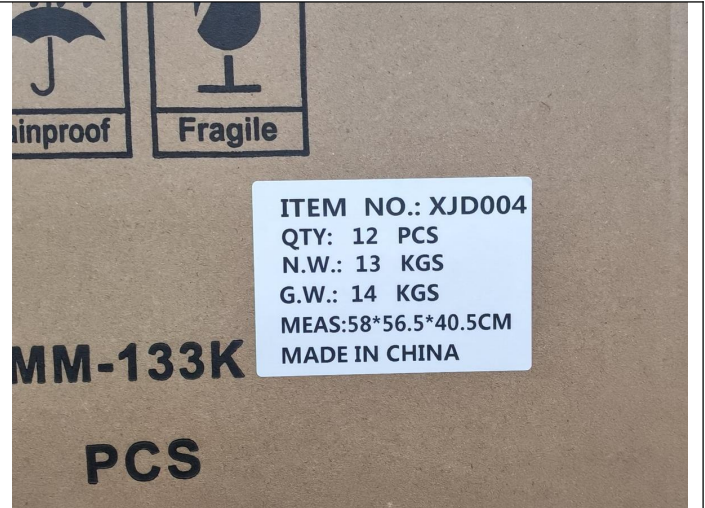
Photos of Product/货物图片:

Photos of item No./款号: XJD004





3 Carton view



4 Carton view



5 Open carton



6 5 ply paper for carton



7 12pcs color box inside one carton



8 Inner box view



9 Inner box view



10 Inner box view



11 Inner box view



12 Inner box view



13 Inner box view



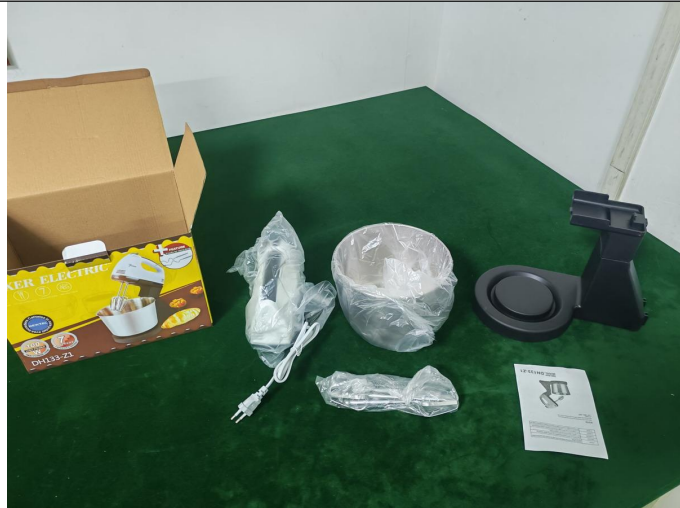
14 scan barcode



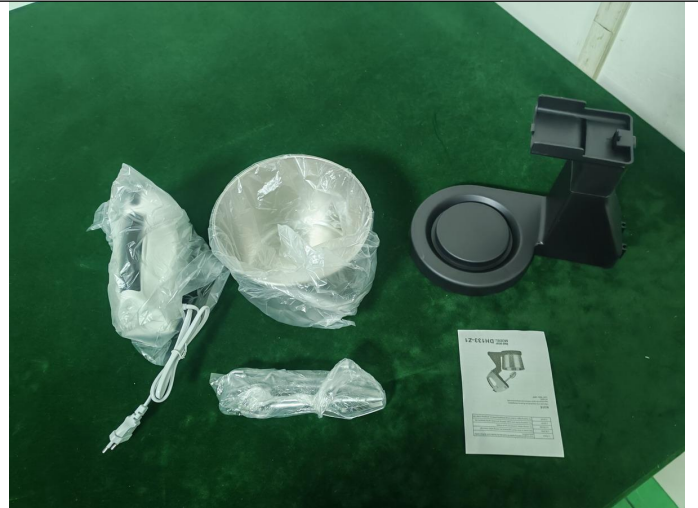
15 Open inner box



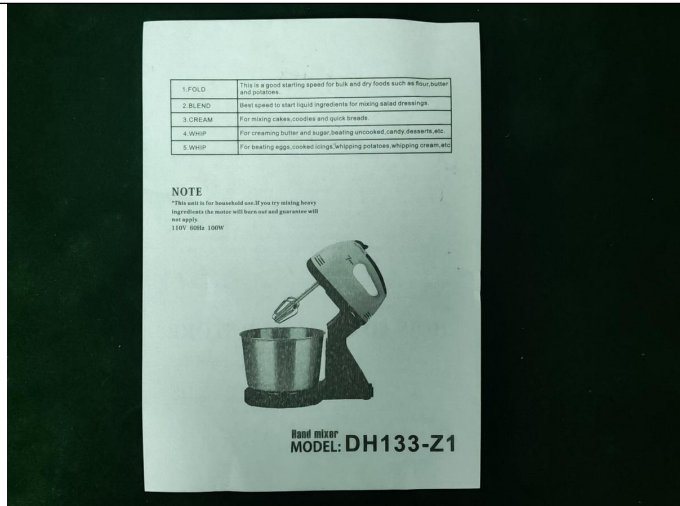
16 3ply paper for color box



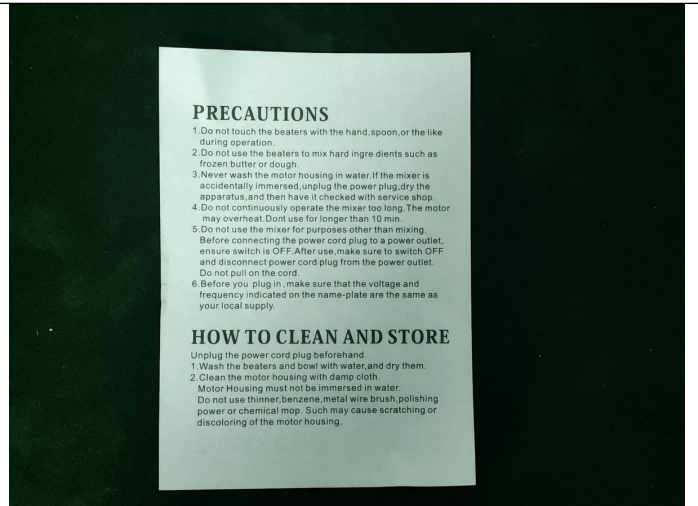
17 Package view



18 Package view



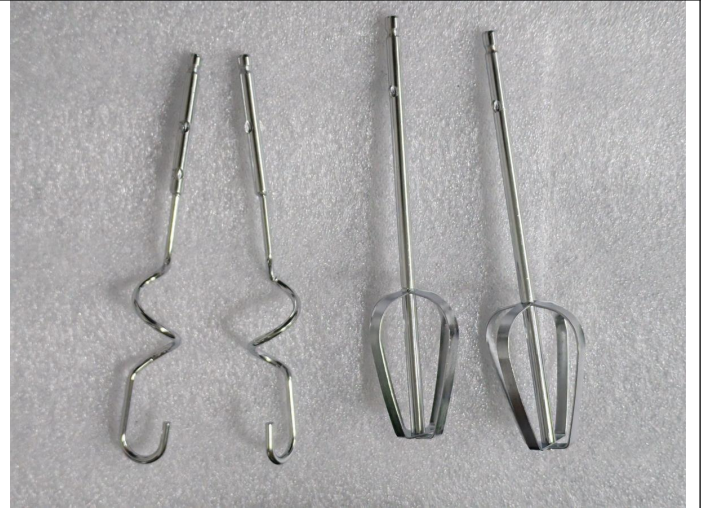
19 Manual view



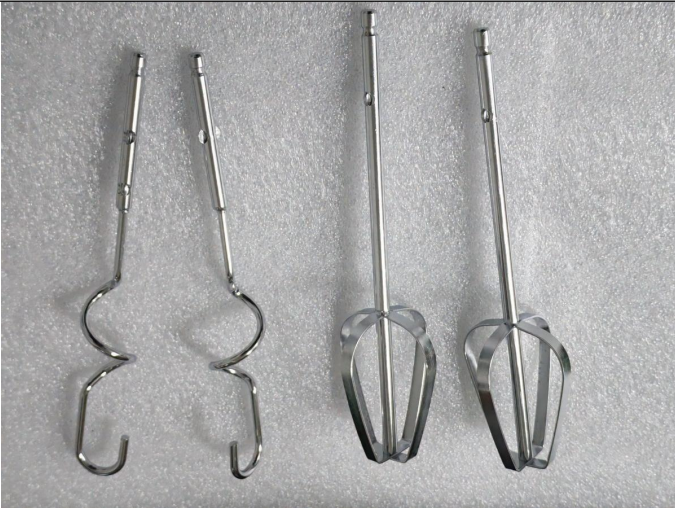
20 Manual view



21 Package view



22 Product view



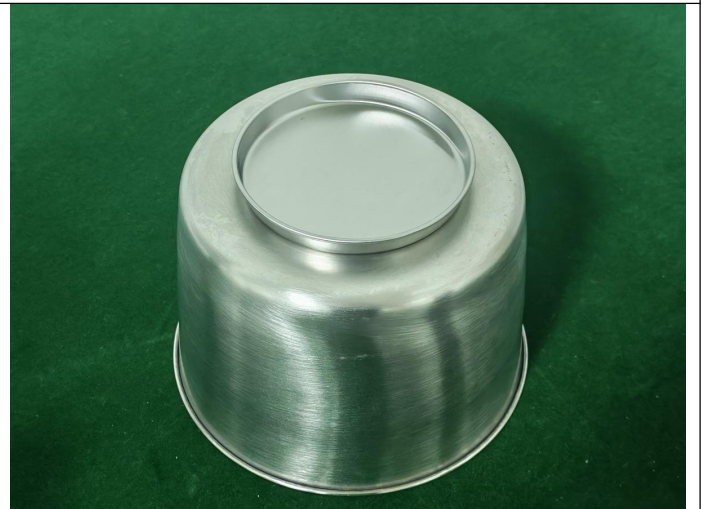
23 Product view



24 Package view



25 Product view



26 Product view



27 Package view



28 Product view



29 Product view



30 Product view



31 Product view



32 Product view



33 Product view



34 Product view



35 Product view



36 Product view



37 Product view



38 Product view



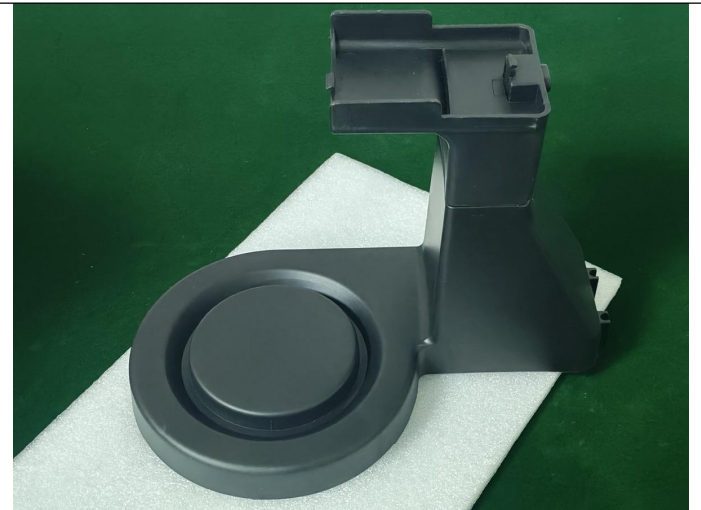
39 Product view



40 Product view



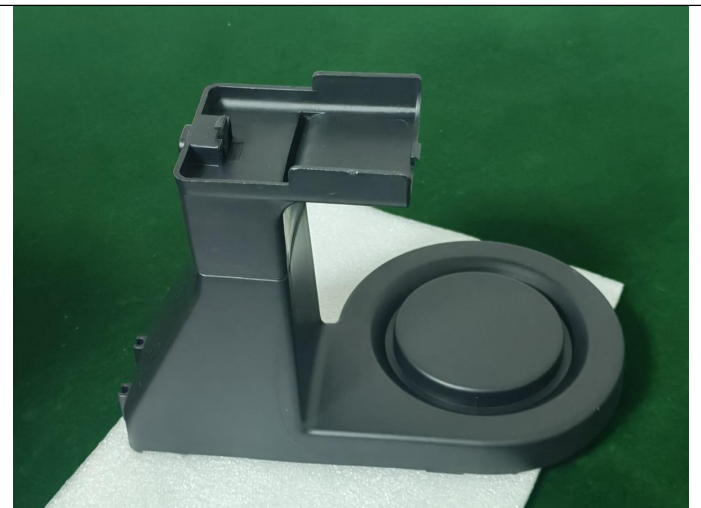
41 Product view



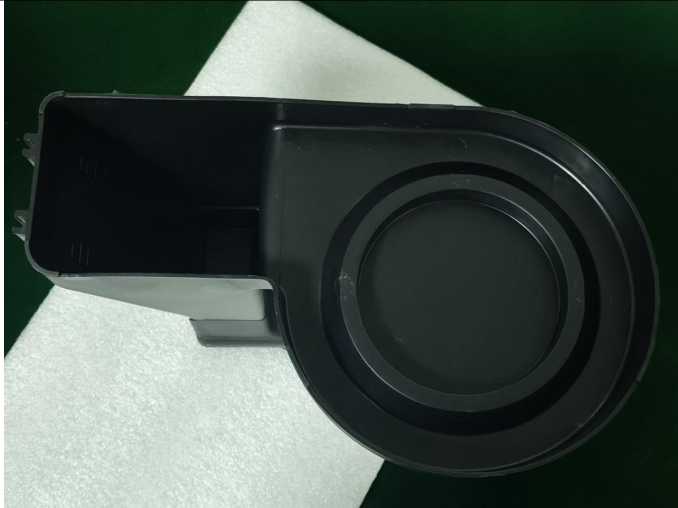
42 Product view



43 Product view



44 Product view



45 Product view



46 Product view



47 Product view



48 Product view



49 Carton size



50 Length 57.5cm



51 Carton size



52 Width 57.5cm



53 Carton size



54 Height 42.3cm



55 Carton weight



55 Carton weight 13.82kg



Photos of loading container/ 装柜图片: container number:PCIU9439247



1 The truck view



2 The container view



3 The container view



4 The container view



5 The container view



6 The container view:PCIU9439247



7 The empty container view: **PCIU9439247**



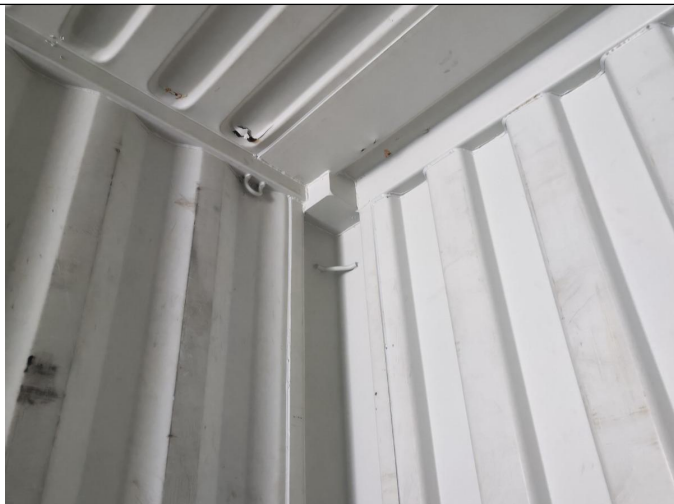
8 The empty container view



9 The empty container view



10 The empty container view



11 The empty container view



12 The empty container view



13 The empty container view



14 The empty container view



15 The empty container view



16 The empty container view



17 The empty container view



18 The empty container view



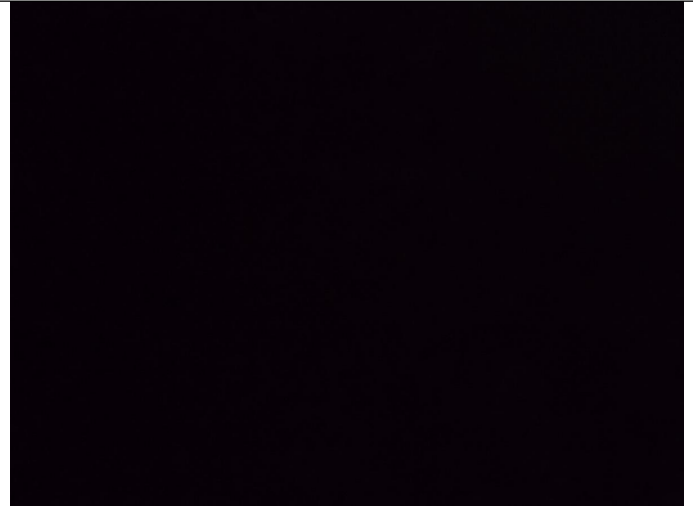
19 The empty container view



20 The empty container view



21 The empty container view



22 Light leakage check



23 The empty container view



24 The empty container view



25 The empty container view



26 The empty container view



27 The empty container view



28 The empty container view



29 The empty container view



30 The empty container view



31 The empty container view



32 Loading



33 Loading(color box)



34 Loading



35 Loading



36 Loading



37 Loading



38 1/4 Loading



39 1/4 Loading



40 Loading



41 1/2 Loading



42 1/2 Loading



43 1/2 Loading



44 Loading



45 Loading



46 3/4 Loading



47 Loading



48 Loading



49 Loading



50 Full loading



51 Half close door



52 Seal number:CR0687085



53 Sealed door(container number:PCIU9439247)



54 Seal number:CR0687085

Other pictures/其他辅助照片



1 Warehouse



2 Warehouse



3 Warehouse



4 Warehouse



5.Warehouse



6.Warehouse



7.After loading



8.After loading

The End of Report/报告结束

Note: 1. This report reflects our findings at the time and the place of inspection based on random samples selected. 2. This inspection was carried out to the best of our knowledge and abilities, and our responsibility is limited to the exercise of reasonable one. 3. This report does not relieve the sellers from their contractual obligations nor does it prejudice buyer's right for compensation for any apparent and/or hidden defects not detected during our inspection or occurring thereafter. 4. This report does not evidence shipment.