



Final Random Inspection Report

GENERAL SUMMARY:

Client:	/	
PO No.:	N/A	
Item No.:	2129/2130/2133/22143/2138/4002/2016/2017 2018/2019/3033//3034/3035/3036/3037/1003 1004/1005/YL-XZEC 4SET/YL-XZEC 3SET 4030/4031/1131/1132/1133/1134/1135/1120 1121/1122/1123/1127/1128/1129	
Product Name:	High Borosilicate	
Quantity:	16908sets	
Inspection location:	Fengyang,Anhui	
Supplier:	Anhui Huiguang Glass Techhnology Co.,Ltd	
Date of inspection:	20260522	

OVERALL CONCLUSION:

Inspection criteria	Passed	Failed	Pending	Comments
Quantity available:	×	-	-	
Product Conformity:	-	-	×	Remark 2
Workmanship:	×	-	-	
Test and measurement:	-	-	×	Remark 5
Labeling:	×	-	-	
Packing and shipping mark:	×	-	-	
Result:	<input type="checkbox"/> Acceptable <input type="checkbox"/> Reject <input checked="" type="checkbox"/> Pending			

SPECIAL REMARK:

- 1.Upon the arrival, all products were finished and all packed into cartons.
- 2.There's no approved sample providing for reference during inspection.
- 3.No product size data, see actual discovery for details.
- 4.Selected 315pcs/86cartons samples for inspection, found 7pcs major defect and 19pcs minor defect, for the defects found during inspection, the inspector had already shown to the factory and requested to replace these defects.
- 5.There is deviation between labeled capacity and actual measured capacity for Model 2130 and 2133.
1.6L specification: actual volume 1.534~1.547L.
2.4L specification: actual volume 2.368L.



MT-INSPECTION

Final Random Inspection Report

Report No.: MT-20260522-004



2130

2133

AVAILABLE QUANTITY:

Order No.	Item No.	Order Qty		Packed		Not finished		Not packed		Inspect Qty	
		pcs	ctn	pcs	ctn	pcs	ctn	pcs	ctn	pcs	ctn
/	2129	500	250	500	250	0	0	0	0	9	5
/	2130	500	125	500	125	0	0	0	0	9	5
/	2133	504	84	504	84	0	0	0	0	10	3
/	22143	300	75	300	75	0	0	0	0	6	2
/	2138	500	125	500	125	0	0	0	0	9	5
/	4002	500	125	500	125	0	0	0	0	9	5
/	2016	504	42	504	42	0	0	0	0	10	3
/	2017	504	42	504	42	0	0	0	0	10	3
/	2018	504	84	504	84	0	0	0	0	10	3
/	2019	504	84	504	84	0	0	0	0	10	3
/	3033	504	21	504	21	0	0	0	0	10	2
/	3034	504	21	504	21	0	0	0	0	10	2
/	3035	496	31	496	31	0	0	0	0	9	2
/	3036	504	42	504	42	0	0	0	0	10	2
/	3037	504	63	504	63	0	0	0	0	10	2
/	1003	504	21	504	21	0	0	0	0	10	2
/	1004	504	21	504	21	0	0	0	0	10	2
/	1005	504	42	504	42	0	0	0	0	10	2
/	YL-XZEC 4SET	504	84	504	84	0	0	0	0	9	3
/	YL-XZEC 3SET	504	63	504	63	0	0	0	0	9	2
/	4030	504	21	504	21	0	0	0	0	9	2
/	4031	504	42	504	42	0	0	0	0	9	2



Final Random Inspection Report

/	1131	504	14	504	14	0	0	0	0	9	2
/	1132	504	21	504	21	0	0	0	0	9	2
/	1133	504	21	504	21	0	0	0	0	9	2
/	1134	504	42	504	42	0	0	0	0	9	2
/	1135	504	42	504	42	0	0	0	0	9	2
/	1120	504	14	504	14	0	0	0	0	9	2
/	1121	504	21	504	21	0	0	0	0	9	2
/	1122	504	21	504	21	0	0	0	0	9	2
/	1123	504	42	504	42	0	0	0	0	9	2
/	1127	504	21	504	21	0	0	0	0	9	2
/	1128	504	21	504	21	0	0	0	0	9	2
/	1129	504	42	504	42	0	0	0	0	9	2
Total:		16908	1830	16908	1830	0	0	0	0	315	86

Lot Size	General Inspection Levels			Special Inspection Levels			
	I	II	III	S1	S2	S3	S4
2 to 8	A	A	B	A	A	A	A
9 to 15	A	B	C	A	A	A	A
16 to 25	B	C	D	A	A	B	B
26 to 50	C	D	E	A	B	B	C
51 to 90	C	E	F	B	B	C	C
91 to 150	D	F	G	B	B	C	D
151 to 280	E	G	H	B	C	D	E
281 to 500	F	H	J	B	C	D	E
501 to 1,200	G	J	K	C	C	E	F
1,201 to 3,200	H	K	L	C	D	E	G
3,201 to 10,000	J	L	M	C	D	F	G
10,001 to 35,000	K	M	N	C	D	F	H
35,001 to 150,000	L	N	P	D	E	G	J
150,001 to 500,000	M	P	Q	D	E	G	J
500,001 and over	N	Q	R	D	E	H	K

Single sampling plans for normal inspection

Sample Size Code Letter	Sample Size	Acceptable Quality Levels (Normal Inspection)																					
		0.065		0.10		0.15		0.25		0.40		0.65		1.0		1.5		2.5		4.0		6.5	
		Ac	Re	Ac	Re	Ac	Re	Ac	Re	Ac	Re	Ac	Re	Ac	Re	Ac	Re	Ac	Re	Ac	Re	Ac	Re
A	2																				0	1	
B	3																				0	1	
C	5																				0	1	
D	8																				0	1	
E	13													0	1						1	2	
F	20											0	1								2	3	
G	32									0	1										3	4	
H	50							0	1					1	2						4	5	
J	80							0	1					2	3						6	7	
K	125			0	1					1	2			3	4						8	9	
L	200	0	1					1	2	2	3			5	6						10	11	
M	315					1	2	2	3	3	4			7	8						12	13	
N	500			1	2	2	3	3	4	5	6			9	10						14	15	
P	800	1	2	2	3	3	4	5	6	7	8			11	12						16	17	
Q	1250	2	3	3	4	5	6	7	8	10	11			13	14						18	19	
R	2000	3	4	5	6	7	8	10	11	14	15			15	16						20	21	



Final Random Inspection Report

Inspection standard: <i>ANSI/ASQC Z1.4-2003</i> Sampling plan: <i>Single, Normal</i> Inspection level: II AQL: Critical: Not Allowed.	Sample Size:315pcs			
	Critical	Major	Minor	
	AQL:	0	2.5	4.0
	Defects Found:	0	7	19
	Max. Allowed:	0	14	21

WORKMANSHIP:						
Item No.	Sample size	Defective rate	Defects Description	Cri	Maj	Min
2129	9	11.1%	Scratch marks	0	1	0
2130	9	11.1%	Bubble	0	0	1
2133	10	10%	Scratch marks	0	0	1
22143	6	16.7%	Bubble	0	0	1
2138	9	0%	No defect	0	0	0
4002	9	11.1%	Bubble	0	0	1
2016	10	10%	Bubble	0	0	1
2017	10	10%	Scratch marks	0	0	1
2018	10	10%	Bubble	0	0	1
2019	10	10%	Scratch marks	0	0	1
3033	10	10%	Scratch marks	0	0	1
3034	10	10%	Bubble	0	0	1
3035	9	11.1%	Bubble	0	0	1
3036	10	10%	Scratch marks	0	0	1
3037	10	10%	Scratch marks	0	1	0
1003	10	20%	Rough edge	0	1	0
			Dent mark	0	1	0
1004	10	10%	Poor surface	0	0	1
1005	10	10%	Bubble	0	0	1
YL-XZEC 4SET	9	11.1%	Scratch marks	0	0	1
YL-XZEC 3SET	9	11.1%	Scratch marks	0	1	0
4030	9	0%	No defect	0	0	0
4031	9	0%	No defect	0	0	0
1131	9	0%	No defect	0	0	0
1132	9	0%	No defect	0	0	0
1133	9	0%	No defect	0	0	0
1134	9	11.1%	surface impurity	0	0	1



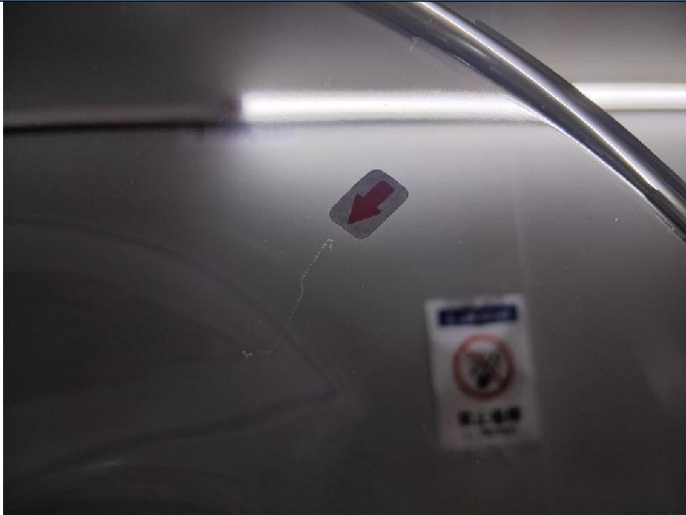
Final Random Inspection Report

MT-INSPECTION

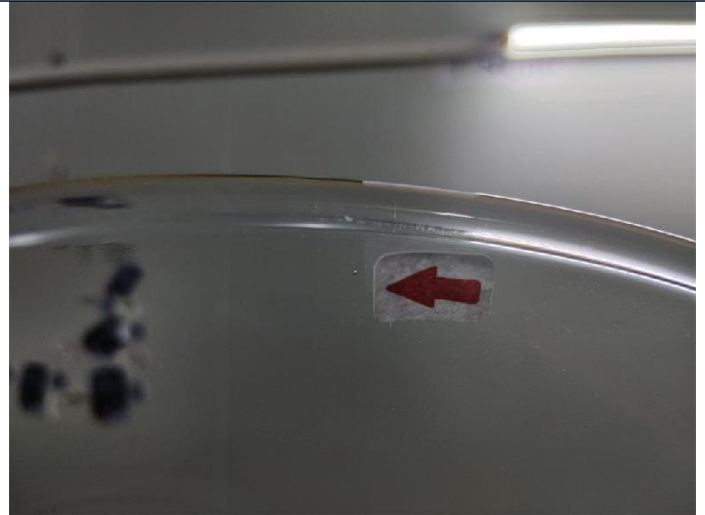
Report No.: MT-20260522-004

1135	9	0%	No defect	0	0	0
1120	9	0%	No defect	0	0	0
1121	9	11.1%	Dirty mark	0	1	0
1122	9	11.1%	Dirty mark	0	1	0
1123	9	11.1%	surface impurity	0	0	1
1127	9	11.1%	surface impurity	0	0	1
1128	9	0%	No defect	0	0	0
1129	9	11.1%	surface impurity	0	0	1
Total defect:				0	7	19
Allowed:				0	14	21
Result:				Pass		

Defect Pictures:



2129-Scratch marks-Maj



2130-Bubble-Min



2133-Scratch marks-Min



22143-Bubble-Min



Final Random Inspection Report

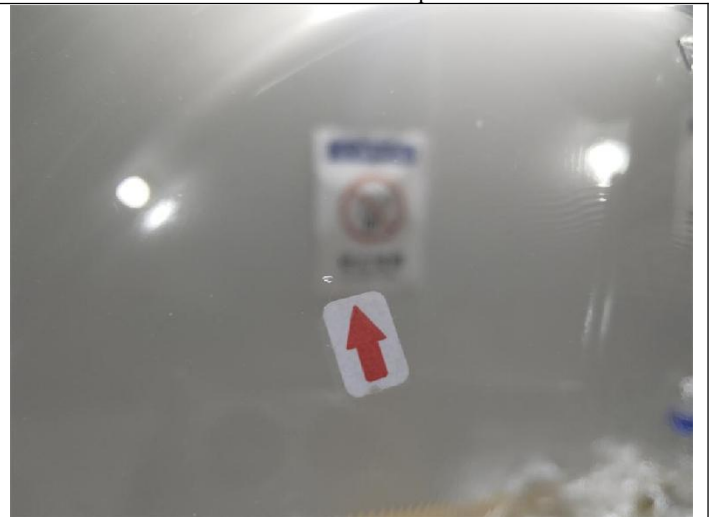
<p>4002-Bubble-Min</p>	<p>2016-Bubble-Min</p>
<p>2017-Scratch marks-Min</p>	<p>2018-Bubble-Min</p>
<p>2019-Scratch marks-Min</p>	<p>3033-Scratch marks-Min</p>



Final Random Inspection Report



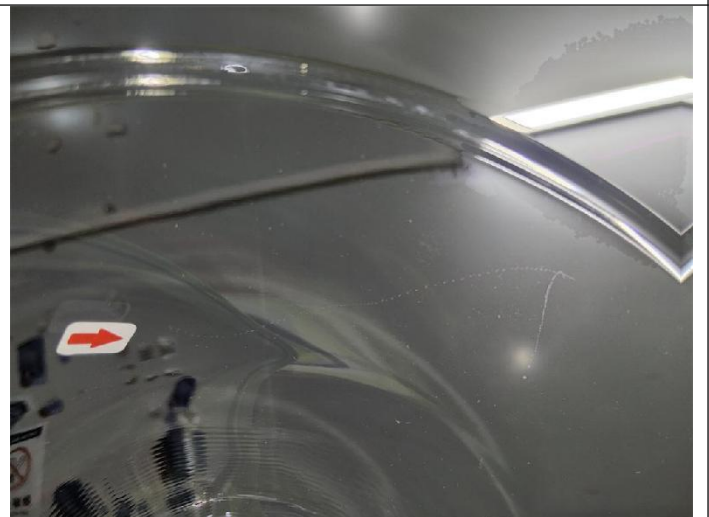
3034-Bubble-Min



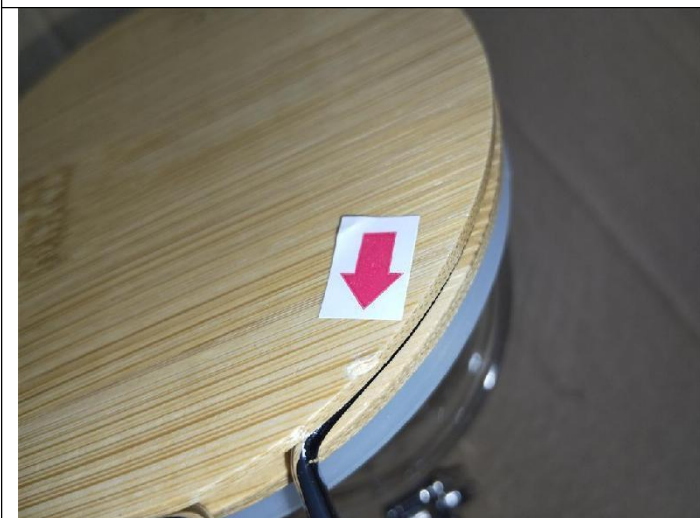
3035-Bubble-Min



3036-Scratch marks-Min



3037-Scratch marks -Maj



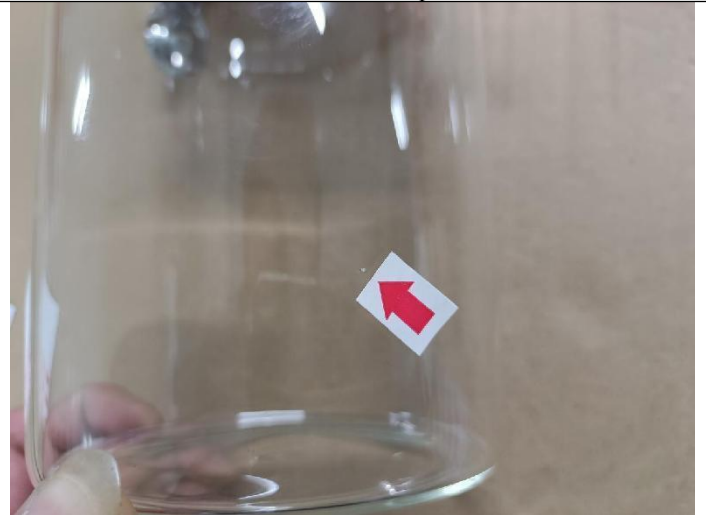
1003-Dent mark



1003-Rough edge



1004-Poor surface -Min



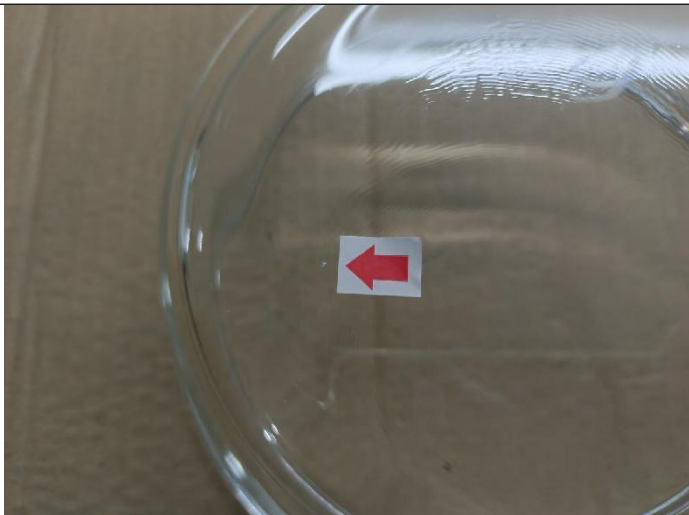
1005- Bubble-Min



YL-XZEC 4SET-Surface scratch-Min



YL-XZEC 3SET-Surface scratch-Maj



1134 -surface impurity -Min



1121-Dirty mark -Maj

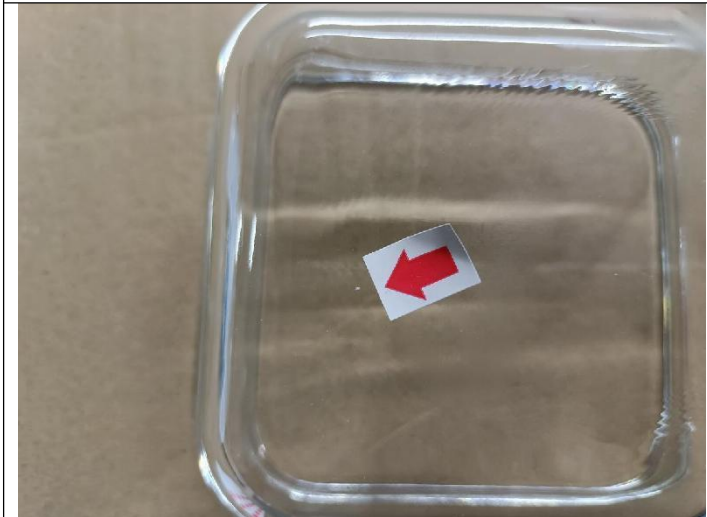


Final Random Inspection Report



1122-Dirty mark -Maj

1123-Surface impurity -Min



1127 -Surface impurity -Min



1129 - Surface impurity -Min

PRODUCT CONFORMITY & ON-SITE TESTS

Check Points & On-site Tests	Sample Size	Criteria	Result & Remarks
Visual Check (Style, Appearance, Material, Color)	All Sample size	a. Conformance to Style / Appearance / Material / Color compared against: <input type="checkbox"/> Client's / <input type="checkbox"/> Factory's ref. sample. <input checked="" type="checkbox"/> No ref. sample for comparison. (N.B.: Provide details in comment section if 2 or more color shades and/or any color variation is found.) b. Free of nick, burrs, pits, sharp point or any other defects which may affect the product serviceability. c. Finish/ coating is smooth and even without streaks, blisters, wrinkles, or runs. d. Good overall appearance with good alignment of components.	PENDING Remark 2
Barcode/QR code scanning test	S-2	Checked by scanner readable	PASS
Function check	S-2	All captioned function is well conducted as intended. Such as installation/adjusting, actual	PASS



MT-INSPECTION

Final Random Inspection Report

Report No.: MT-20260522-004

		using function etc. All of function should be complied with claims.	
Smell test	All Sample size	No pungent smell come out	PASS
Capacity check	S-2	Actual finding:	PENDING Remarks :5
Leak test	S-2	No leakage	PASS

PACKING AND ACCESSORIES:

Item No.:	Master shipper (pcs/ctn)	Carton size L×W×H (cm)	G.W (Kg)	N.W (Kg)	Color box size L×W×H (cm)	Color box weight(g)	Carton Barcode	Color box Barcode
2129	2	-	-	-	-	-	-	2026020749154
2130	4	-	-	-	-	-	-	2026020749161
2133	6	-	-	-	-	-	-	2026020749178
22143	4	-	-	-	-	-	-	2026020749192
2138	4	-	-	-	-	-	-	2026020749185
4002	4	-	-	-	-	-	-	2026020749208
2016	12	-	-	-	-	-	-	2026020749215
2017	12	-	-	-	-	-	-	2026020749222
2018	6	-	-	-	-	-	-	2026020749239
2019	6	-	-	-	-	-	-	2026020749246
3033	24	-	-	-	-	-	-	2026020749253
3034	24	-	-	-	-	-	-	2026020749260
3035	16	-	-	-	-	-	-	2026020749277
3036	12	-	-	-	-	-	-	2026020749284
3037	8	-	-	-	-	-	-	2026020749291
1003	24	-	-	-	-	-	-	2026020749307
1004	24	-	-	-	-	-	-	2026020749314
1005	12	-	-	-	-	-	-	2026020749321
YL-XZEC 4SET	6	-	-	-	-	-	-	2026020749338
YL-XZEC 3SET	8	-	-	-	-	-	-	2026020749345
4030	24	-	-	-	-	-	-	2026020749369
4031	12	-	-	-	-	-	-	2026020749352
1131	36	-	-	-	-	-	-	2026020749376
1132	24	-	-	-	-	-	-	2026020749383
1133	24	-	-	-	-	-	-	2026020749390
1134	12	-	-	-	-	-	-	2026020749406
1135	12	-	-	-	-	-	-	2026020749413
1120	36	-	-	-	-	-	-	2026020749420
1121	24	-	-	-	-	-	-	2026020749437



Final Random Inspection Report

MT-INSPECTION

Report No.: MT-20260522-004

1122	24	-	-	-	-	-	-	2026020749444
1123	12	-	-	-	-	-	-	2026020749451
1127	24	-	-	-	-	-	-	2026020749468
1128	24	-	-	-	-	-	-	2026020749475
1129	12	-	-	-	-	-	-	2026020749482

PRODUCT SPECIFICATION:

Item No.:	Check point	Client Spec.	Ref. Sample	Sample 1#	Sample 2#	Sample 3 #	Sample 4 #
2129	Size check(cm)	/	/	30×19.3×6	34×22×6.1	37.6×25.7×6.1	/
	Weight check(g)	/	/	1013.8	1324.17	1802.14	/
2130	Size check(cm)	/	/	20.5×13.4×4.7	25.5×17.6×5.9	30×21×6.3	34×13.7×6.7
	Weight check(g)	/	/	397.30	699.84	988.51	1394.07
2133	Size check(cm)	/	/	20.5×13.4×4.7	25.5×17.6×5.9	30×21×6.9	/
	Weight check(g)	/	/	395.81	700.55	995.88	/
22143	Size check(cm)	/	/	30×21×6	34.5×23.8×6.1	/	/
	Weight check(g)	/	/	989.68	1391.77	/	/
2138	Size check(cm)	/	/	27.3×27.3×3.6	30.5×30.5×3.6	39×27.5×6.1	/
	Weight check(g)	/	/	951.94	1233.92	1865.19	/
4002	Size check(cm)	/	/	33×20×13.3	/	/	/
	Weight check(g)	/	/	2229.40	/	/	/
2016	Size check(cm)	/	/	25.5×17.5×5.8	/	/	/
	Weight check(g)	/	/	700	/	/	/
2017	Size check(cm)	/	/	30×21×6.4	/	/	/
	Weight check(g)	/	/	989.58	/	/	/
2018	Size check(cm)	/	/	34.2×23.8×6.7	/	/	/
	Weight check(g)	/	/	1391.99	/	/	/
2019	Size check(cm)	/	/	39×27.5×6.1	/	/	/
	Weight check(g)	/	/	1865.19	/	/	/
3033	Size check(cm)	/	/	14.8×14.8×8.1	/	/	/
	Weight check(g)	/	/	402.39	/	/	/
3034	Size check(cm)	/	/	16.6×16.6×8.8	/	/	/
	Weight check(g)	/	/	555.93	/	/	/
3035	Size check(cm)	/	/	18.8×18.8×9.1	/	/	/
	Weight check(g)	/	/	665.08	/	/	/
3036	Size check(cm)	/	/	20.8×20.8×10.3	/	/	/
	Weight check(g)	/	/	822.65	/	/	/
3037	Size check(cm)	/	/	22.7×22.7×11.1	/	/	/



Final Random Inspection Report

MT-INSPECTION

Report No.: MT-20260522-004

	Weight check(g)	/	/	1062.73	/	/	/
1003	Size check(cm)	/	/	13.3×10×8.4	/	/	/
	Weight check(g)	/	/	279.48	/	/	/
1004	Size check(cm)	/	/	13.5×10.2×13.1	/	/	/
	Weight check(g)	/	/	348.8	/	/	/
1005	Size check(cm)	/	/	14.2×10.8×18.1	/	/	/
	Weight check(g)	/	/	430.8	/	/	/
YL-XZEC 4SET	Size check(cm)	/	/	10×10×5.6	13×13×6.4	16×16×7.8	19×19×9.1
	Weight check(g)	/	/	200.4	319.2	496.2	800
YL-XZEC 3SET	Size check(cm)	/	/	10×10×5.7	12.8×12.8×6.5	16×16×7.8	/
	Weight check(g)	/	/	205.8	324	496.4	/
4030	Size check(cm)	/	/	17.5×13×9.1	/	/	/
	Weight check(g)	/	/	532.5	/	/	/
4031	Size check(cm)	/	/	21×16×11.2	/	/	/
	Weight check(g)	/	/	928	/	/	/
1131	Size check(cm)	/	/	12×12×6	/	/	/
	Weight check(g)	/	/	229.3	/	/	/
1132	Size check(cm)	/	/	14.1×14.1×6.6	/	/	/
	Weight check(g)	/	/	313.2	/	/	/
1133	Size check(cm)	/	/	15.8×15.8×7	/	/	/
	Weight check(g)	/	/	409.5	/	/	/
1134	Size check(cm)	/	/	18.5×18.5×7.9	/	/	/
	Weight check(g)	/	/	535.5	/	/	/
1135	Size check(cm)	/	/	20.5×20.5×8.7	/	/	/
	Weight check(g)	/	/	773	/	/	/
1120	Size check(cm)	/	/	13×9.5×5.4	/	/	/
	Weight check(g)	/	/		/	/	/
1121	Size check(cm)	/	/	15.7×11.7×6	/	/	/
	Weight check(g)	/	/	320.2	/	/	/
1122	Size check(cm)	/	/	13.5×18.3×6.3	/	/	/
	Weight check(g)	/	/	434.6	/	/	/
1123	Size check(cm)	/	/	20.8×16×7.1	/	/	/
	Weight check(g)	/	/	638	/	/	/
1127	Size check(cm)	/	/	12.5×12.5×6	/	/	/
	Weight check(g)	/	/	276.7	/	/	/
1128	Size check(cm)	/	/	14.5×14.5×6.8	/	/	/
	Weight check(g)	/	/	366.2	/	/	/



Final Random Inspection Report

MT-INSPECTION

Report No.: MT-20260522-004

1129	Size check(cm)	/	/	16.3x16.3x7	/	/	/
	Weight check(g)	/	/	507	/	/	/

EXPORT CARTON INFORMATION:

Carton:	New export carton	Yes	Sealing:	Opaque gummed tape	-
Fastening:	Metal staples	No		Transparent gummed tape	Yes
Strapping:	Nylonx2	No		Paper tape	-
Material:	Ply of corrugated paper	5ply	Others:	-	

Product photo show:

1-Item:2129



Carton view



Carton view



Carton view



Open the carton



Final Random Inspection Report



Product view



Product view



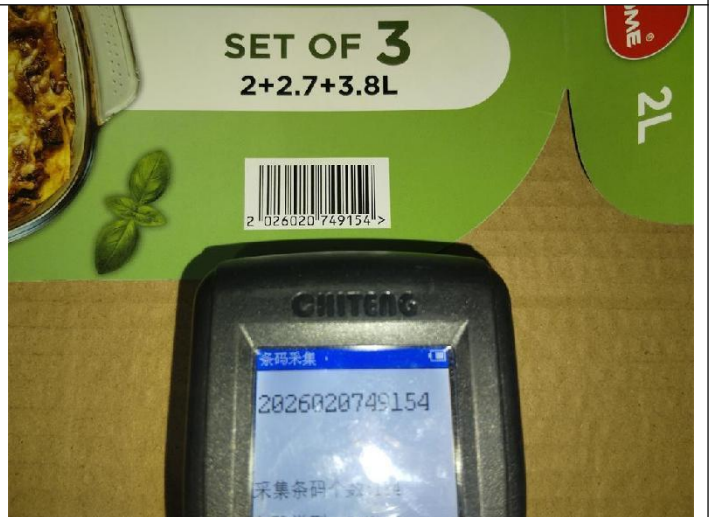
Product view-2L



Product view



Product view



Product view



Final Random Inspection Report



Product view



Product view



Product view



Product view



Product view



Product view



Final Random Inspection Report



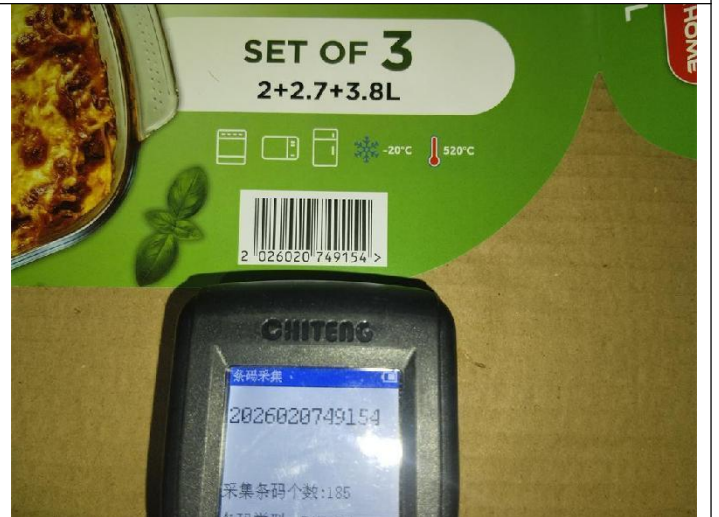
Product view-2.7L



Product view



Product view



Product view



Product view



Product view



Product view



Product view



Product view



Product view



Product view-3.8L



Product view



MT-INSPECTION

Final Random Inspection Report

Report No.: MT-20260522-004



Product view



Product view



Product view



Product view



Product view



Product view



MT-INSPECTION

Final Random Inspection Report

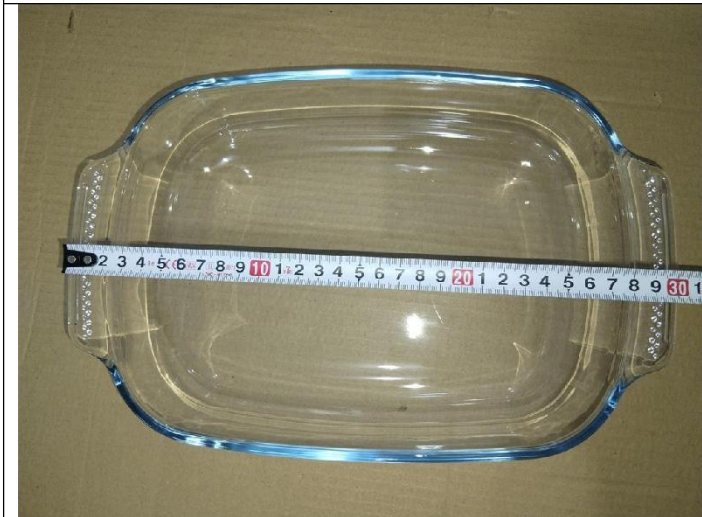
Report No.: MT-20260522-004



Product view



Product view



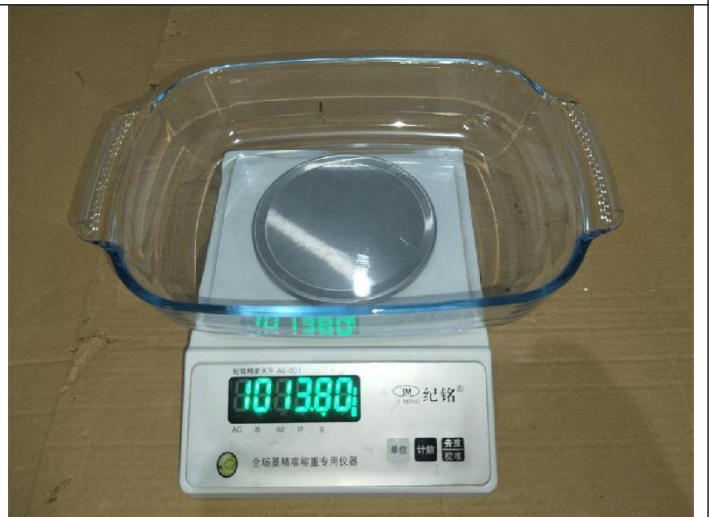
Product size



Product size



Product size



Product weight



MT-INSPECTION

Final Random Inspection Report

Report No.: MT-20260522-004



Volume test



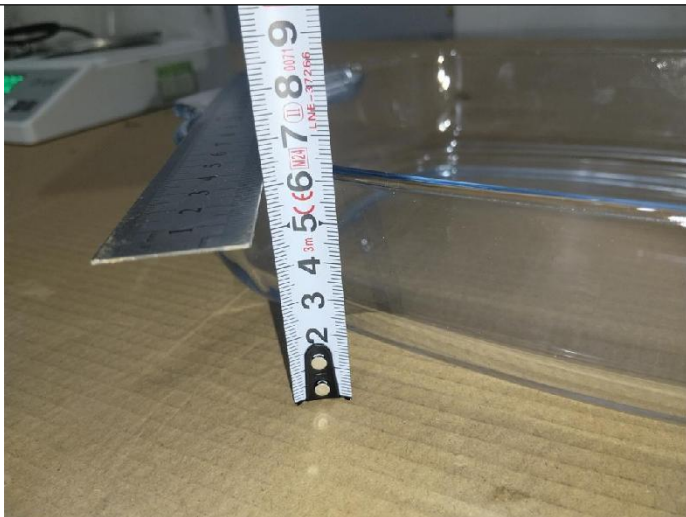
Volume test



Product size



Product size



Product size



Product weight



MT-INSPECTION

Final Random Inspection Report

Report No.: MT-20260522-004



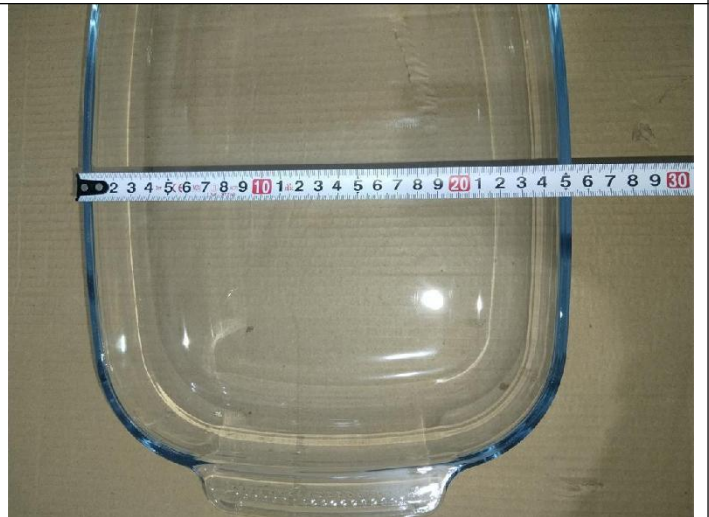
Volume test



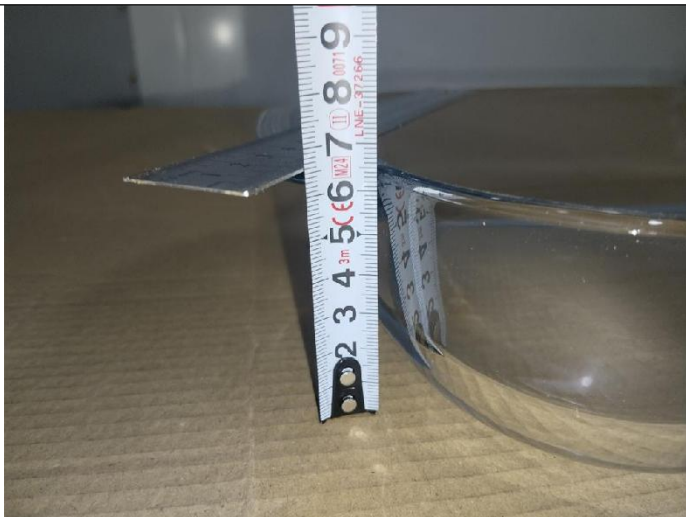
Volume test



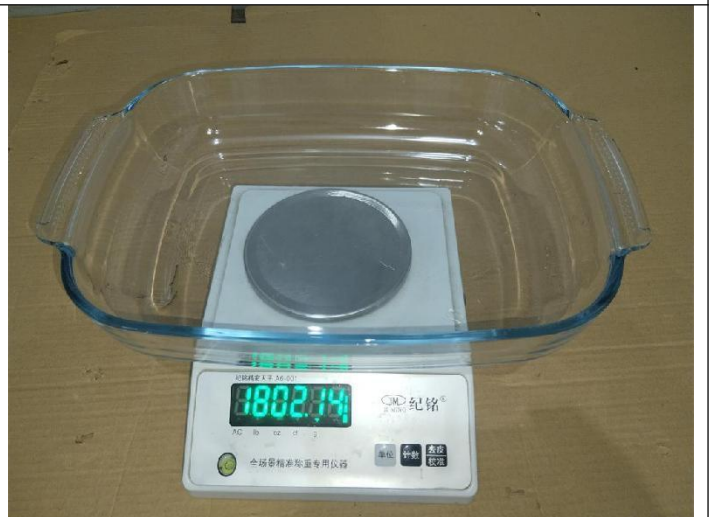
Product size



Product size



Product size



Product weight



MT-INSPECTION

Final Random Inspection Report

Report No.: MT-20260522-004



Volume test



Volume test

2 - Item:2130



Carton view



Carton view



Carton view



Open the carton



Final Random Inspection Report



Product view



Product view



Product view



Product view-0.7L



Product view



Product view



MT-INSPECTION

Final Random Inspection Report

Report No.: MT-20260522-004



Product view



Product view



Product view



Product view



Product view



Product view



MT-INSPECTION

Final Random Inspection Report

Report No.: MT-20260522-004



Product view



Product view-1.6L



Product view



Product view



Product view



Product view



MT-INSPECTION

Final Random Inspection Report

Report No.: MT-20260522-004



Product view



Product view



Product view



Product view



Product view



Product view-2.4L



MT-INSPECTION

Final Random Inspection Report

Report No.: MT-20260522-004



Product view



Product view



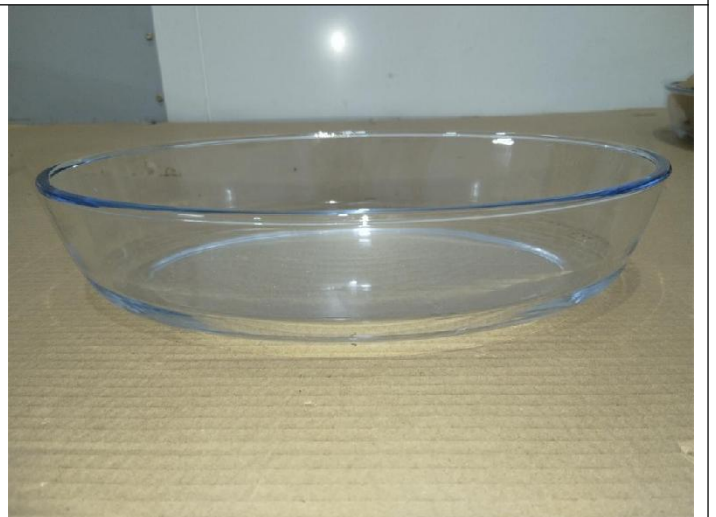
Product view



Product view



Product view



Product view



Final Random Inspection Report



Product view



Product view



Product view



Product view



Product view



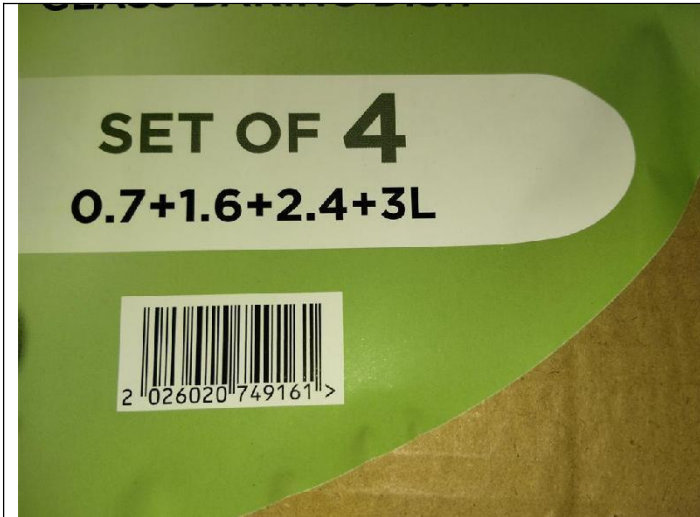
Product view-3L



MT-INSPECTION

Final Random Inspection Report

Report No.: MT-20260522-004



Product view



Product view



Product view



Product view



Product view



Product view



MT-INSPECTION

Final Random Inspection Report

Report No.: MT-20260522-004



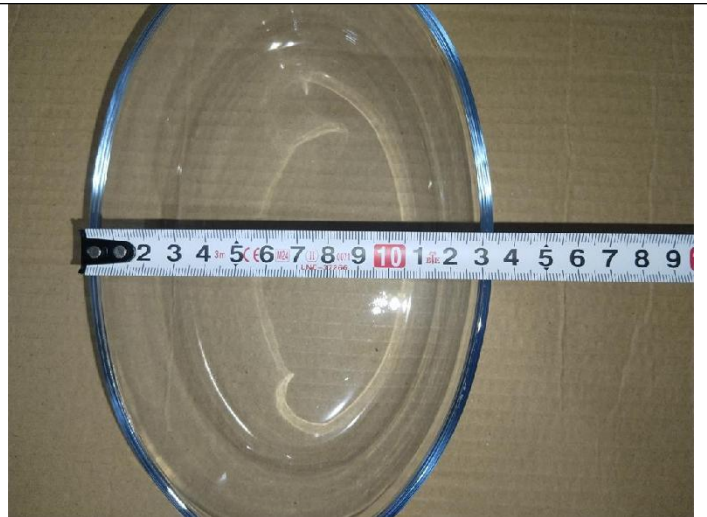
Product view



Product view



Product size



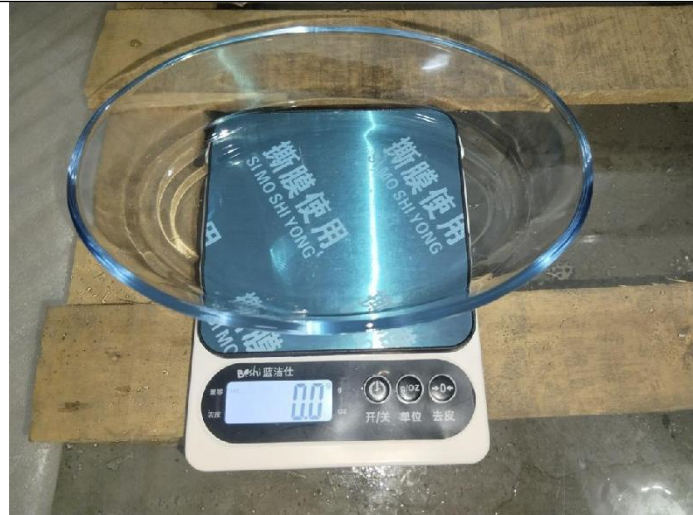
Product size



Product size



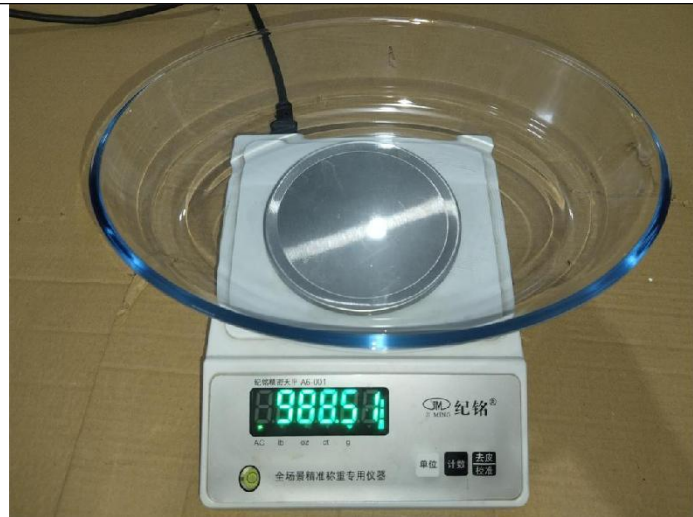
Product weight



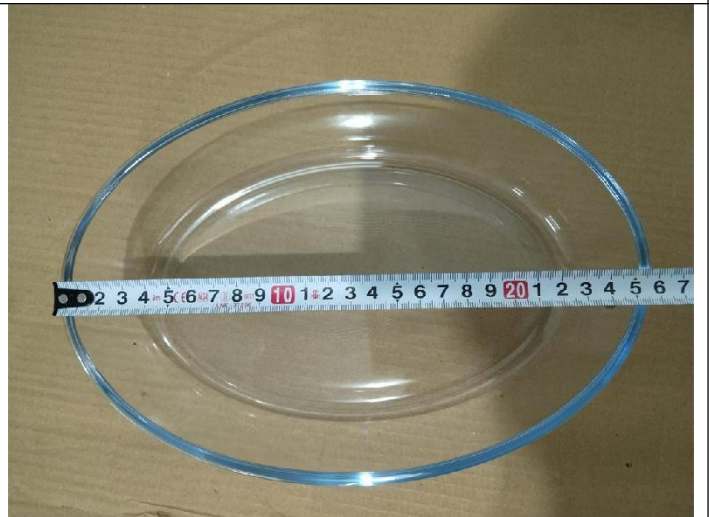
Volume test



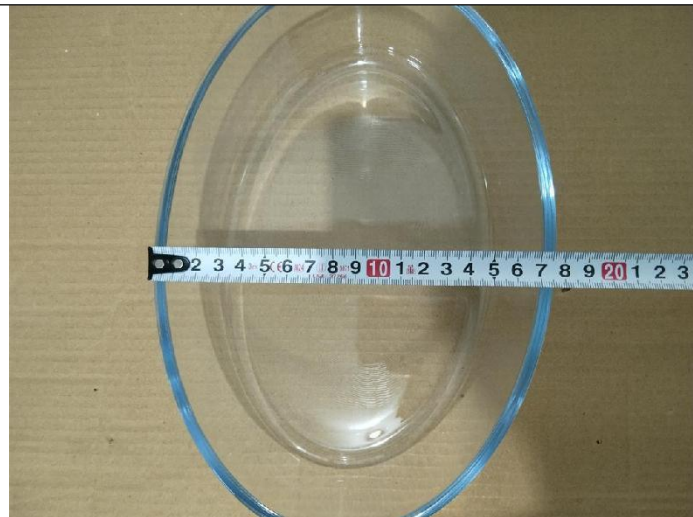
Volume test



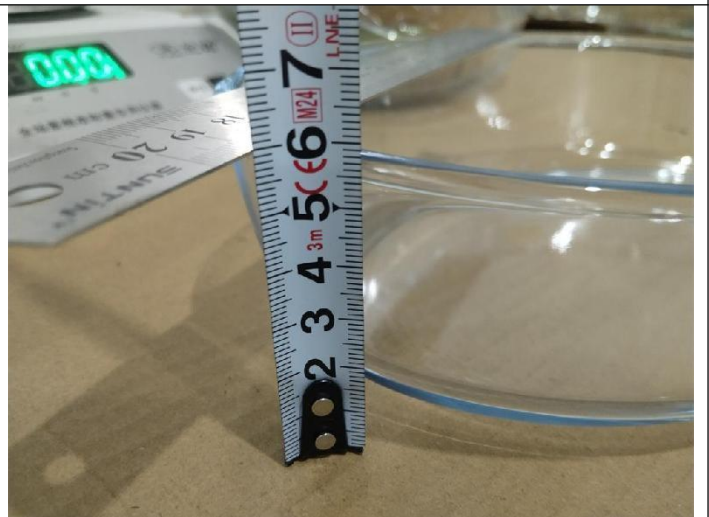
Product weight



Product size



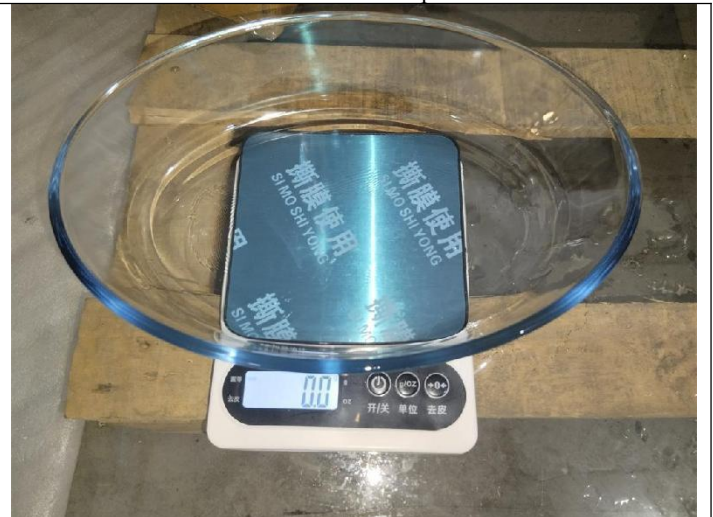
Product size



Product size



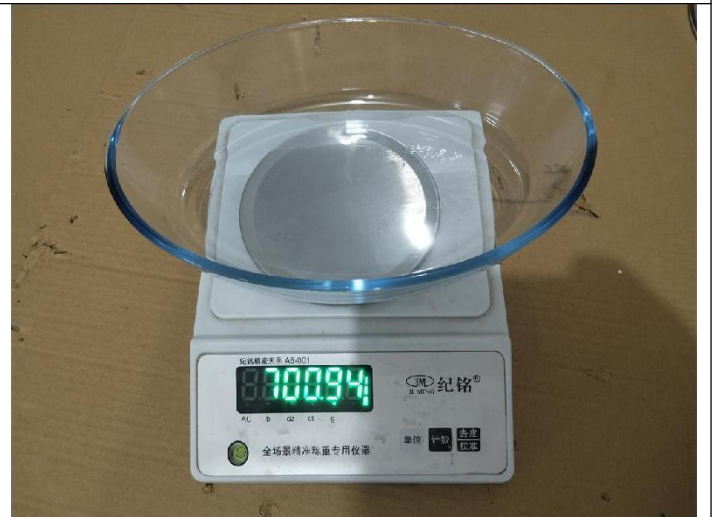
Product weight



Volume test



Volume test



Product weight



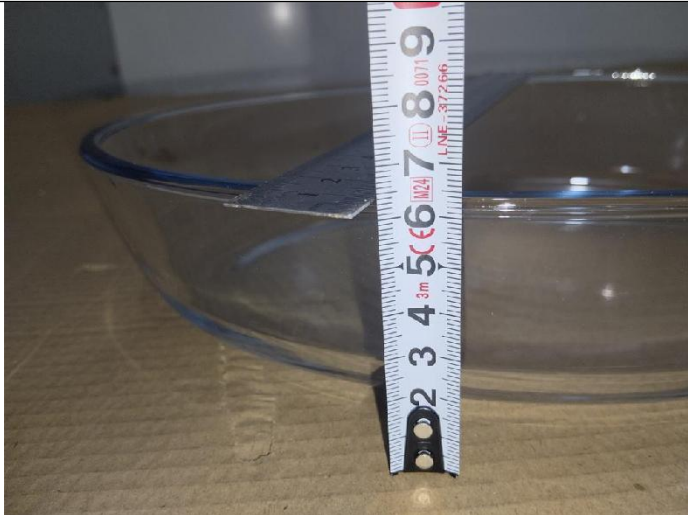
Product size



Product size



Final Random Inspection Report



Product size



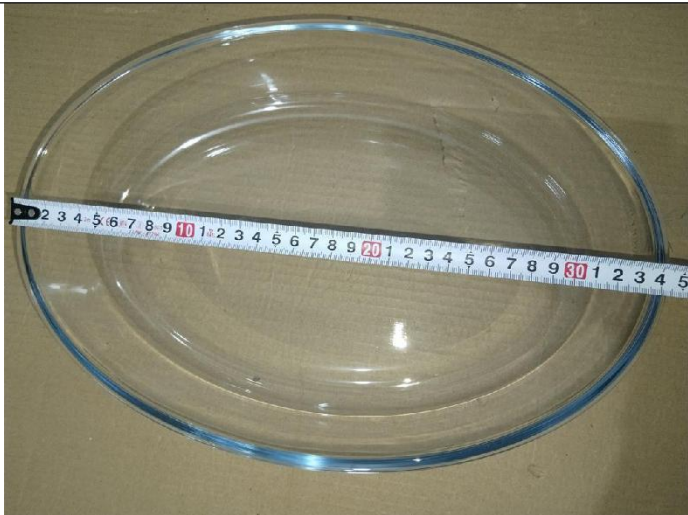
Volume test



Volume test



Product weight



Product size



Product size



Final Random Inspection Report



Carton view



Open the carton



Product view



Product view



Product view



Product view-0.7L



Final Random Inspection Report



Product view



Product view



Product view



Product view



Product view



Product view



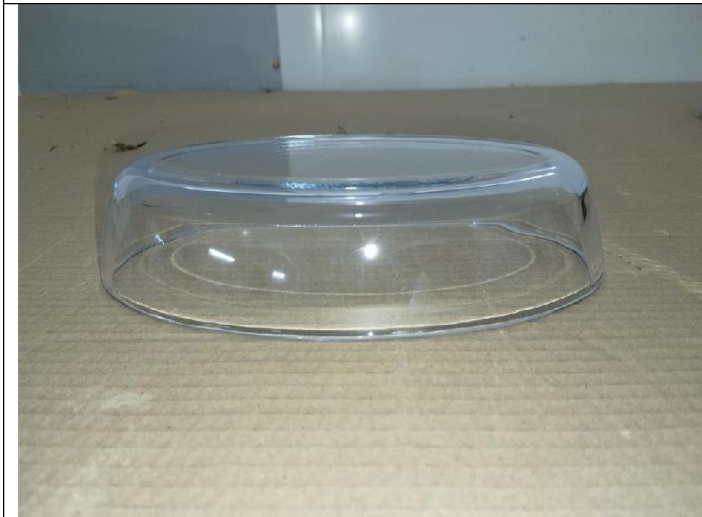
Final Random Inspection Report



Product view



Product view



Product view



Product view-1.6L



Product view



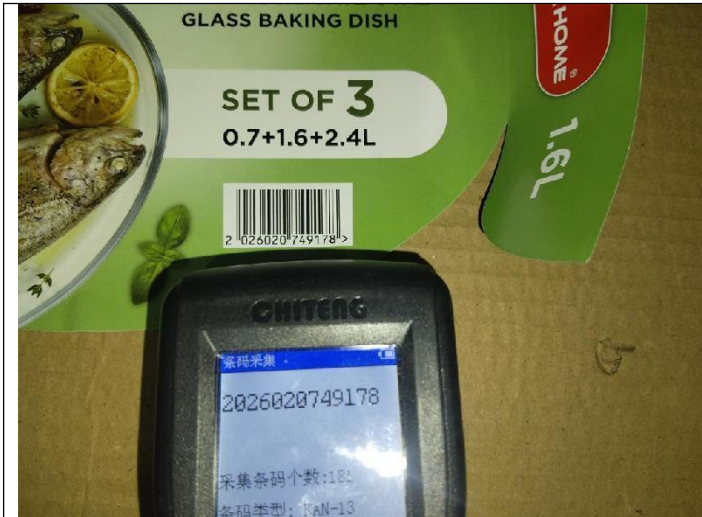
Product view



MT-INSPECTION

Final Random Inspection Report

Report No.: MT-20260522-004



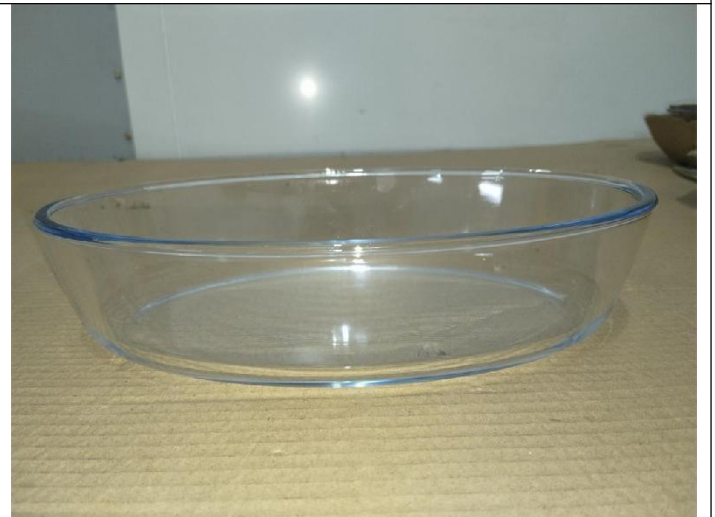
Product view



Product view



Product view



Product view



Product view



Product view



MT-INSPECTION

Final Random Inspection Report

Report No.: MT-20260522-004



Product view



Product view-2.4L



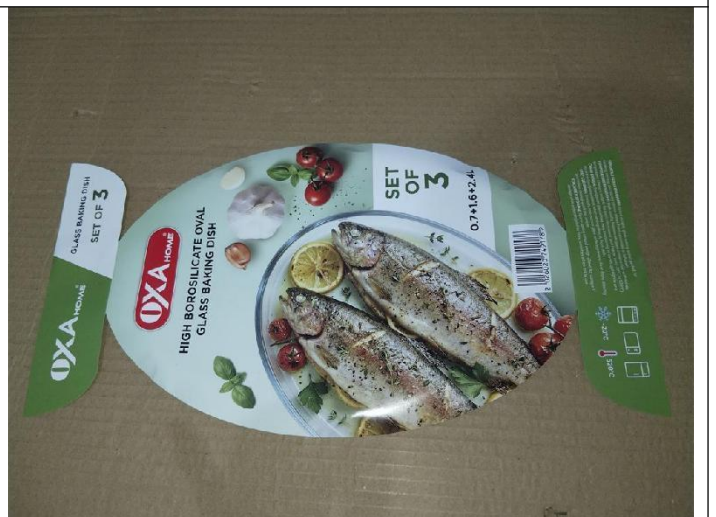
Product view



Product view



Product view



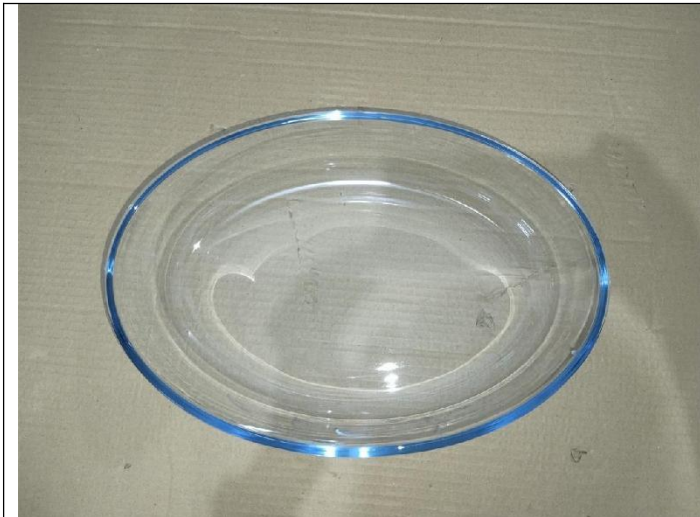
Product view



MT-INSPECTION

Final Random Inspection Report

Report No.: MT-20260522-004



Product view



Product view



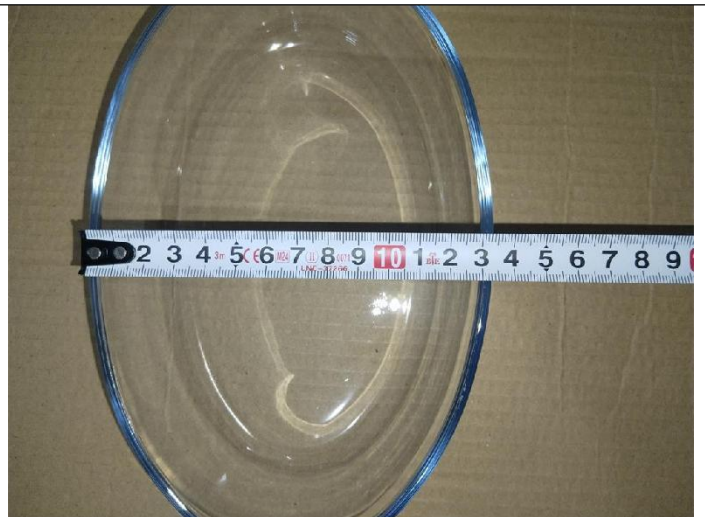
Product view



Product view



Product size



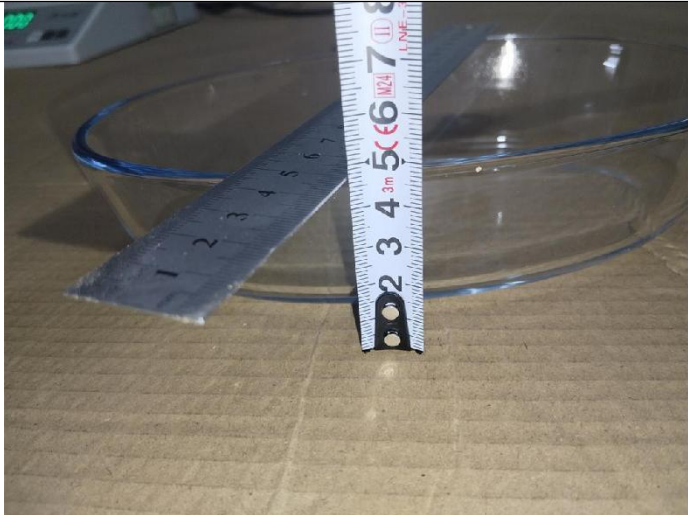
Product size



MT-INSPECTION

Final Random Inspection Report

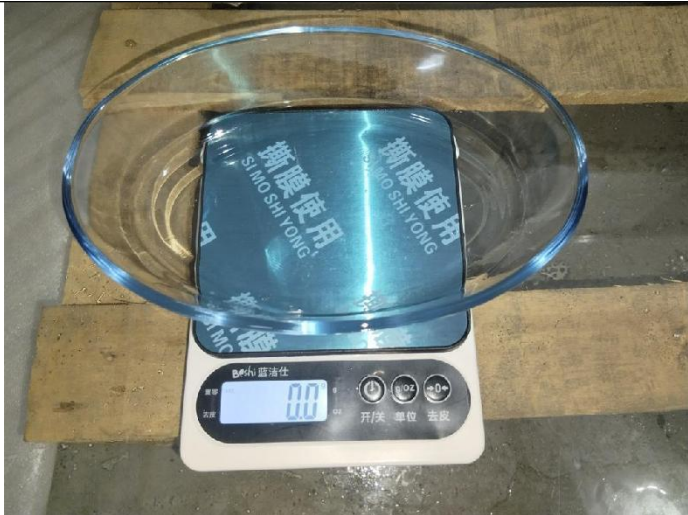
Report No.: MT-20260522-004



Product size



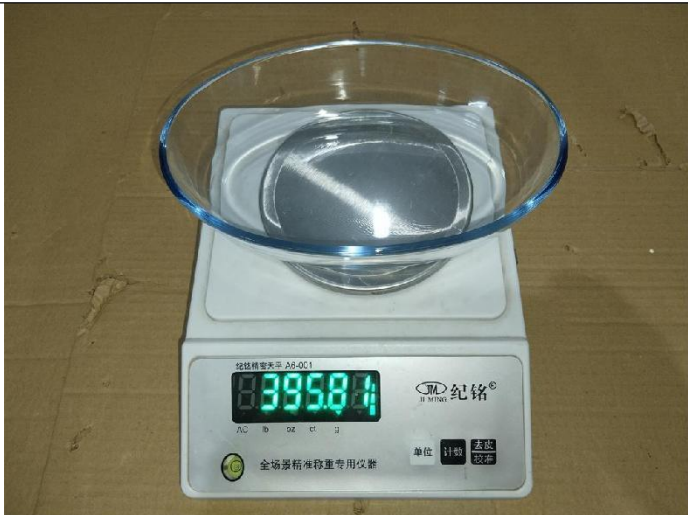
Product weight



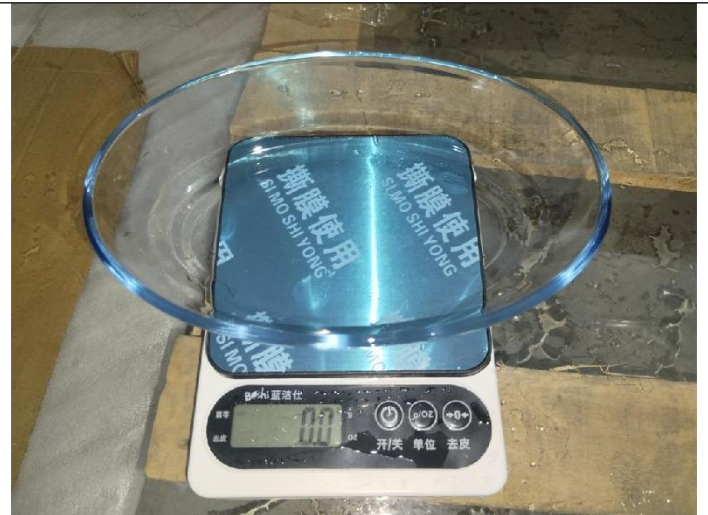
Volume test



Volume test



Product weight



Volume test



MT-INSPECTION

Final Random Inspection Report

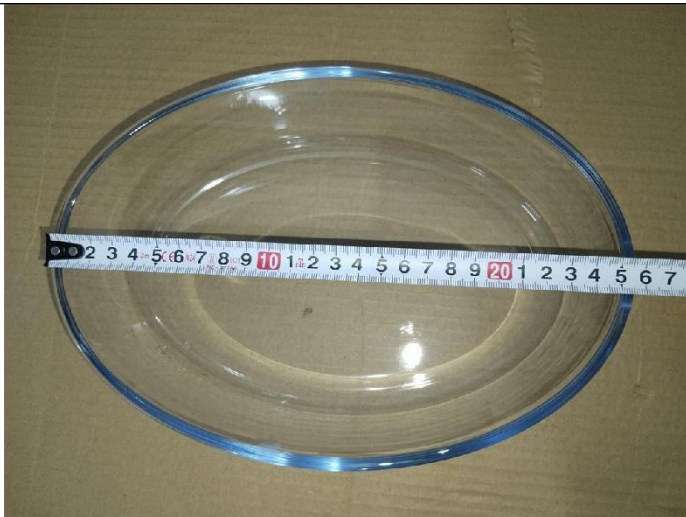
Report No.: MT-20260522-004



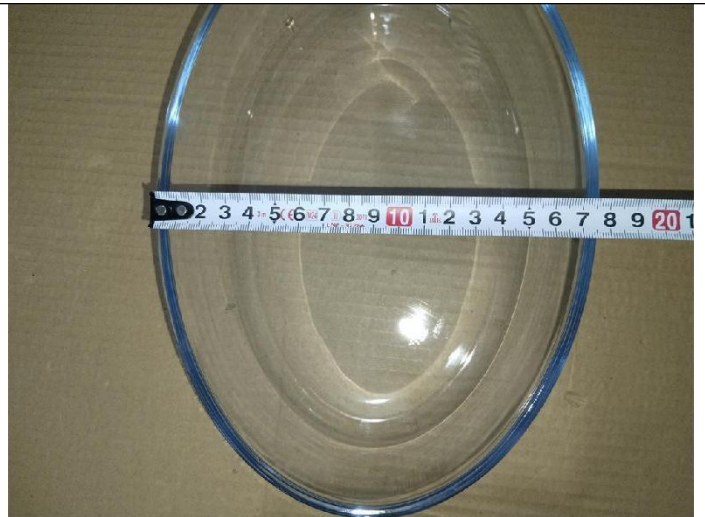
Volume test



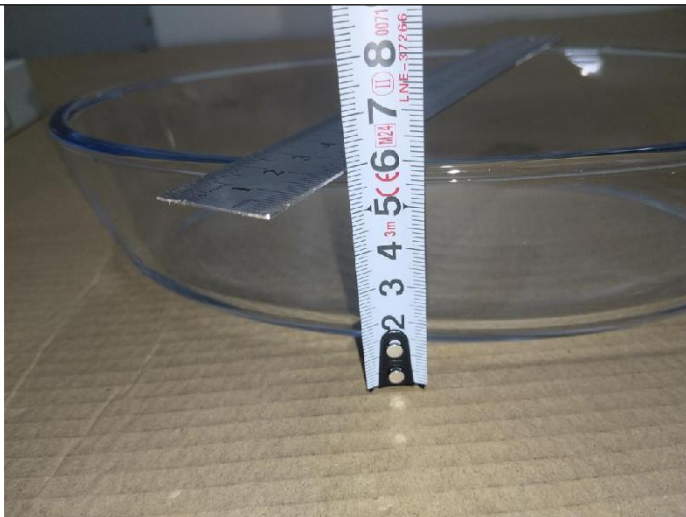
Product weight



Product size



Product size



Product size



Volume test



MT-INSPECTION

Final Random Inspection Report

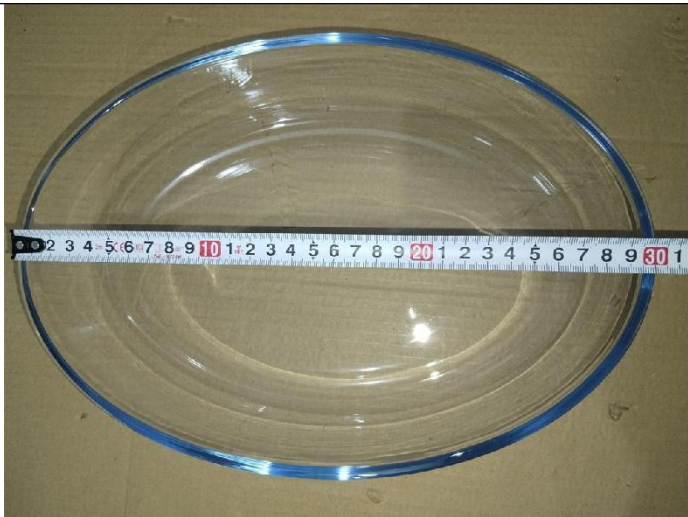
Report No.: MT-20260522-004



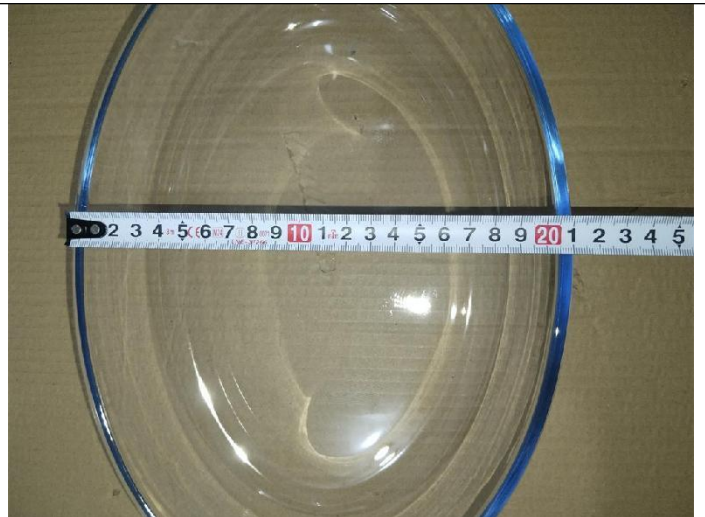
Volume test



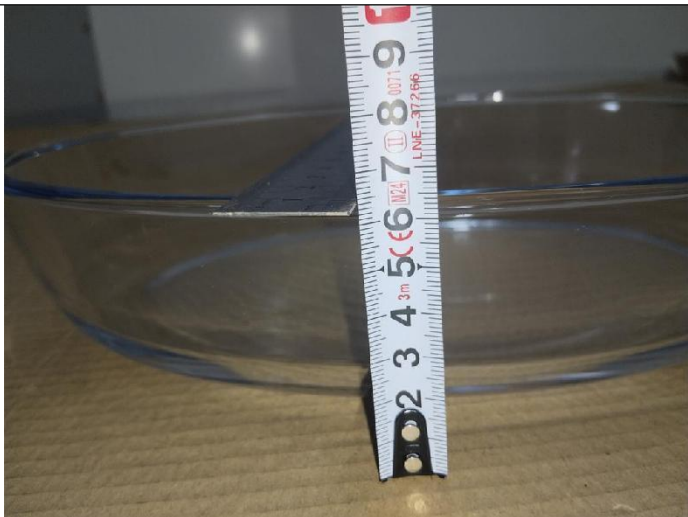
Product weight



Product size



Product size



Volume test



Volume test



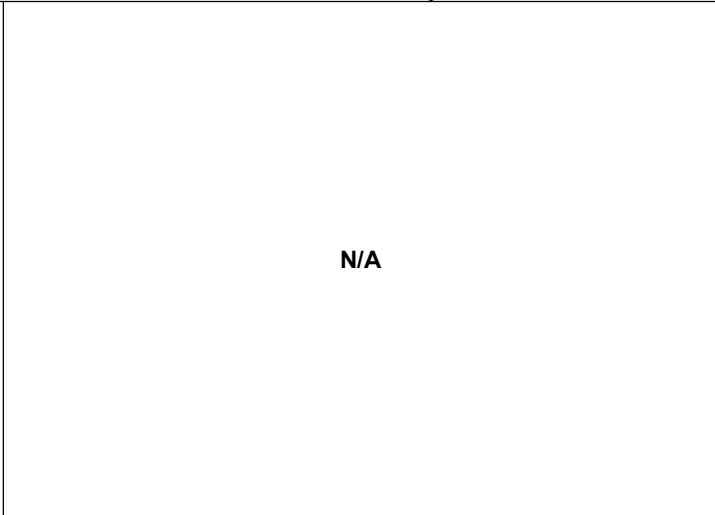
MT-INSPECTION

Final Random Inspection Report

Report No.: MT-20260522-004



Volume test



N/A



N/A

4 - Item:22143



Carton view



Carton view



Carton view



Open the carton



Final Random Inspection Report



Product view



Product view



Product view-2.4L



Product view



Product view



Product view



Final Random Inspection Report



Product view



Product view



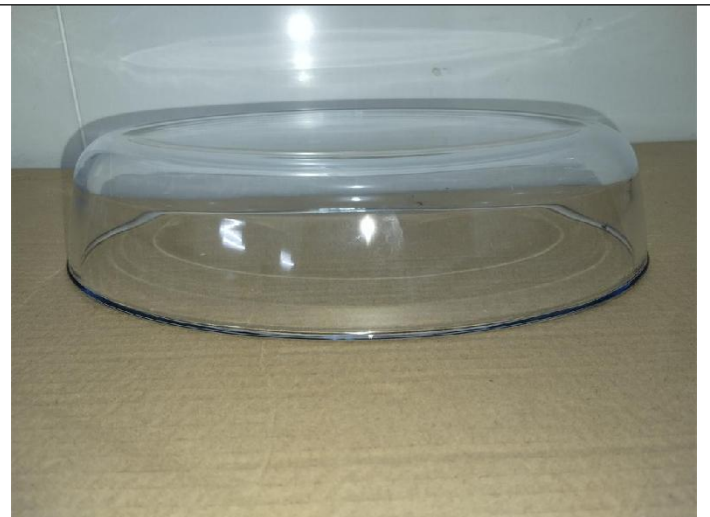
Product view



Product view



Product view



Product view



MT-INSPECTION

Final Random Inspection Report

Report No.: MT-20260522-004



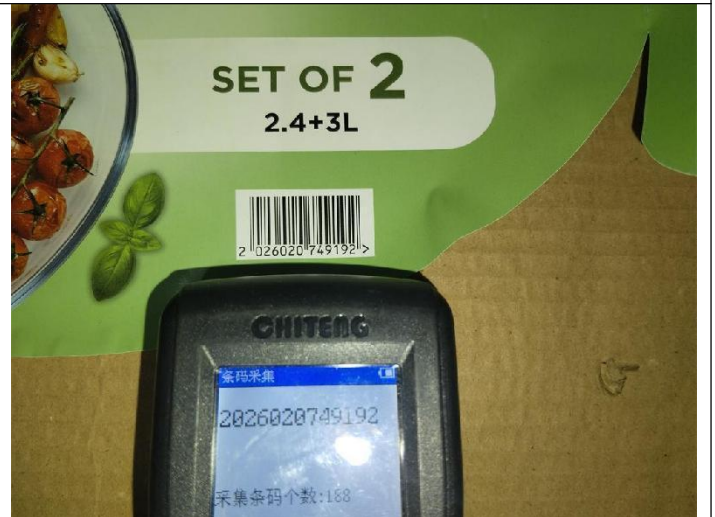
Product view-3L



Product view



Product view



Product view



Product view



Product view



Final Random Inspection Report



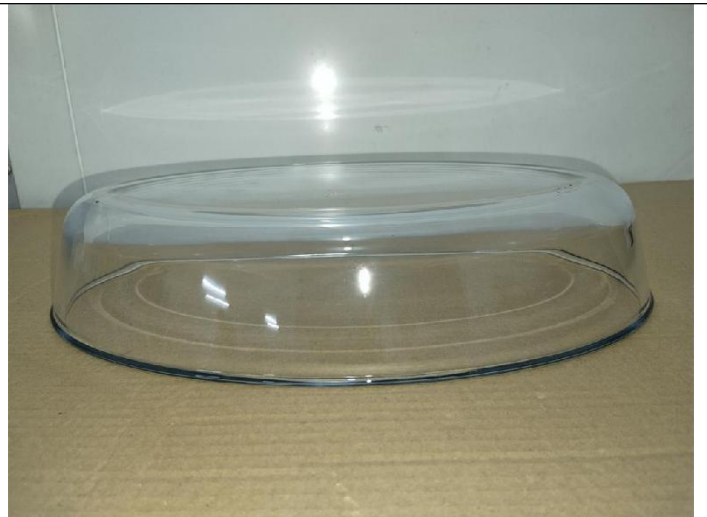
Product view



Product view



Product view



Product view



Product size



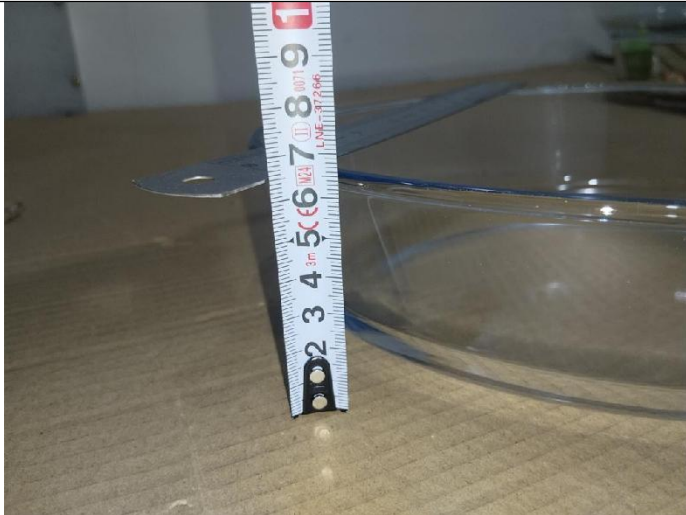
Product size



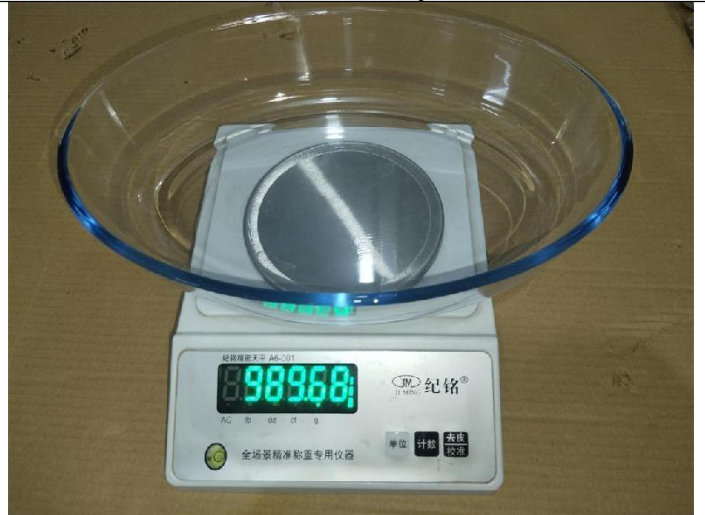
MT-INSPECTION

Final Random Inspection Report

Report No.: MT-20260522-004



Product size



Product weight



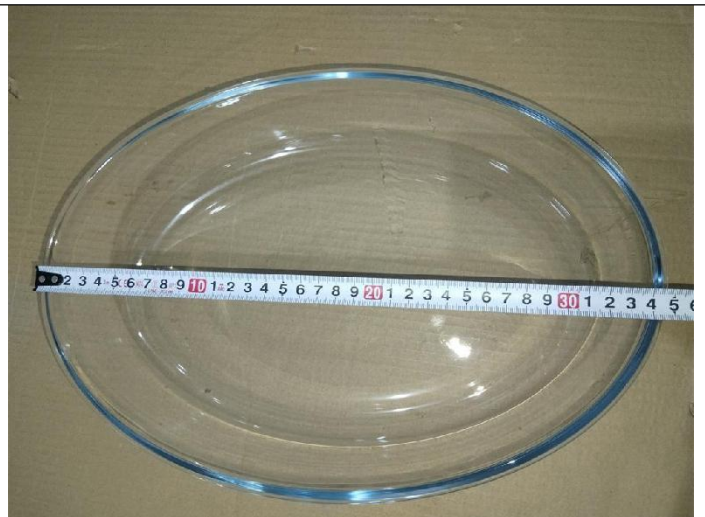
Volume test



Volume test



Product weight



Product size



MT-INSPECTION

Final Random Inspection Report

Report No.: MT-20260522-004



Product size



Product size



Volume test



Volume test

5 - Item:2138



Carton view



Carton view



MT-INSPECTION

Final Random Inspection Report

Report No.: MT-20260522-004



Carton view



Open the carton



Product view



Product view



Product view



Product view



Product view



Product view



Product view



Product view



Product view



Product view



MT-INSPECTION

Final Random Inspection Report

Report No.: MT-20260522-004



Product view



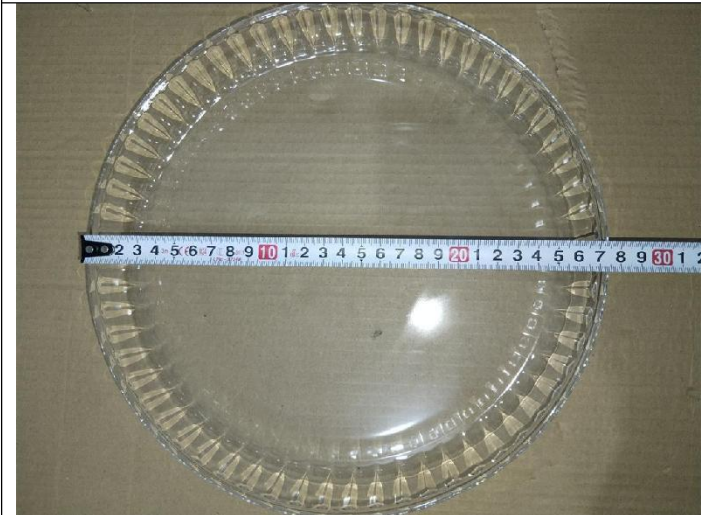
Product view



Product view



Product view



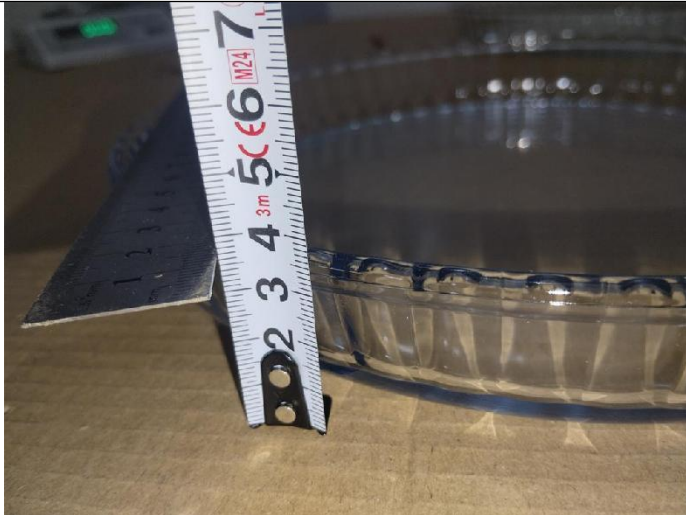
Product size



Product size



Final Random Inspection Report



Product size



Product weight



Volume test



Volume test



Product weight



Product size



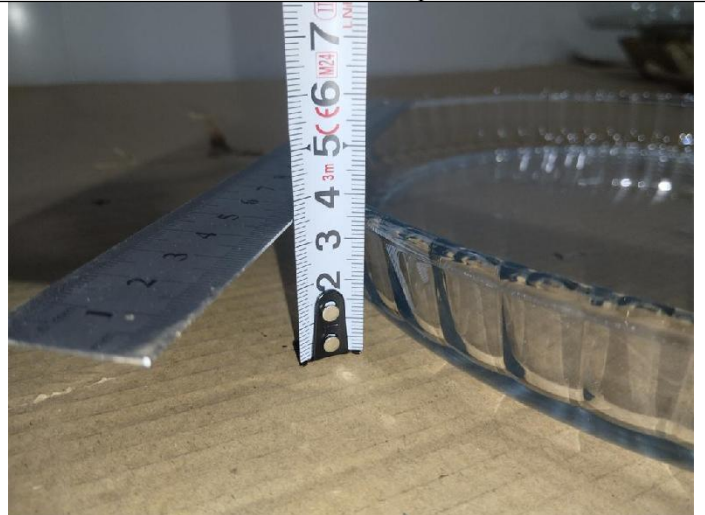
MT-INSPECTION

Final Random Inspection Report

Report No.: MT-20260522-004



Product size



Product size



Volume test



Volume test

6 - Item:4002



Carton view



Carton view



MT-INSPECTION

Final Random Inspection Report

Report No.: MT-20260522-004



Carton view



Open the carton



Product view



Product view



Product view



Product view



MT-INSPECTION

Final Random Inspection Report

Report No.: MT-20260522-004



Product view



Product view



Product view



Product view



Product view



Product view



Final Random Inspection Report



Product view



Product view



Product size



Product size



Product size



Product weight



MT-INSPECTION

Final Random Inspection Report

Report No.: MT-20260522-004



Volume test



Volume test

7 - Item:2016



Carton view



Carton view



Carton view



Carton view



Final Random Inspection Report



Open the carton



Product view



Product view



Product view



Product view



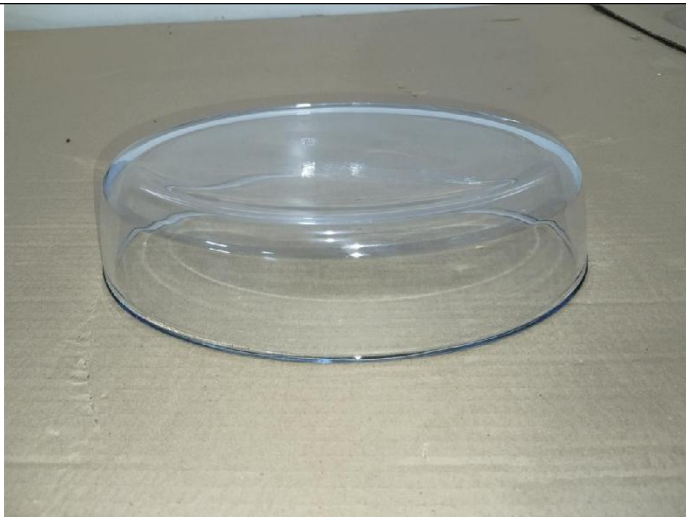
Product view



Product view



Product view



Product view



Product view



Product view



Product view



MT-INSPECTION

Final Random Inspection Report

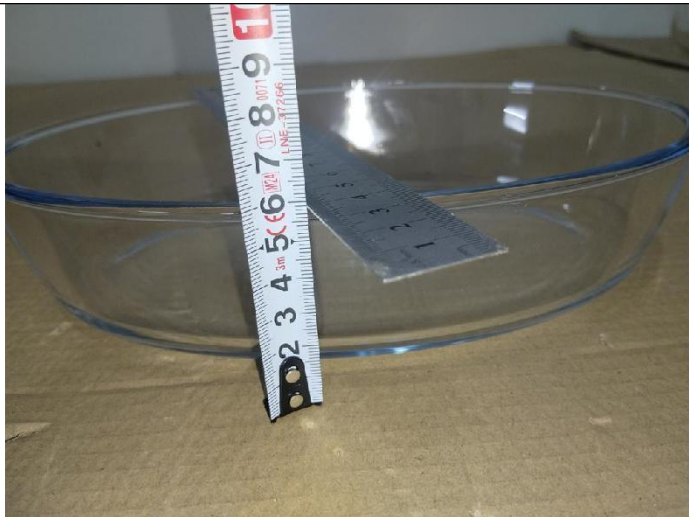
Report No.: MT-20260522-004



Product size



Product size



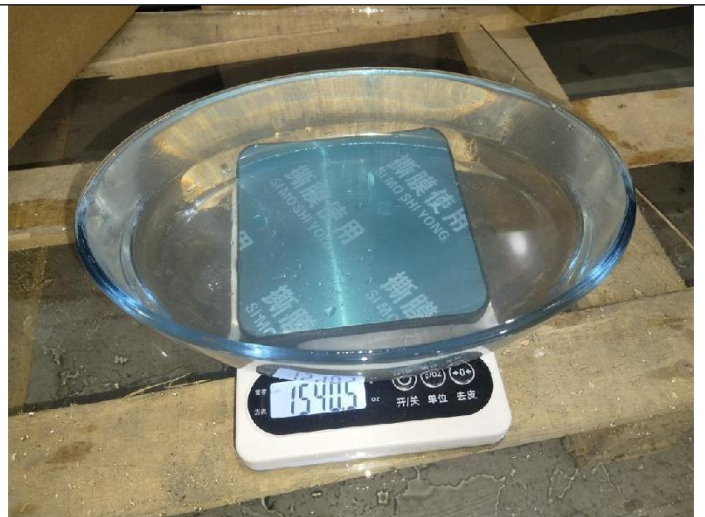
Product size



Product weight



Volume test



Volume test

8 - Item:2017



MT-INSPECTION

Final Random Inspection Report

Report No.: MT-20260522-004



Carton view



Carton view

Carton Marks	2.4L Oval glass baking dish
Item SKU:	2017
Nbr. Units	12 SETS
Carton Nbr.:	142
Country of Origin:	P.R.C



Carton view

N.W.: 13.02 KGS
 G.W.: 14.22 KGS
 C/N MESA: 42.8x31.8x46.3 CM



Open the carton



Product view



Product view



MT-INSPECTION

Final Random Inspection Report

Report No.: MT-20260522-004



Product view



Product view



Product view



Product view



Product view



Product view



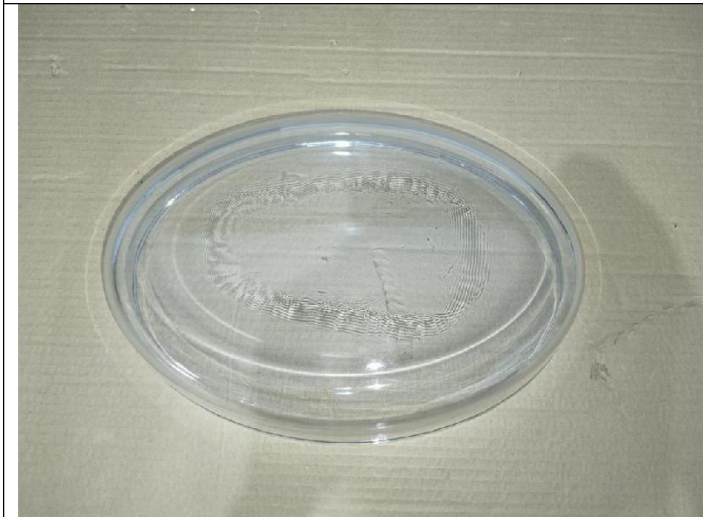
Final Random Inspection Report



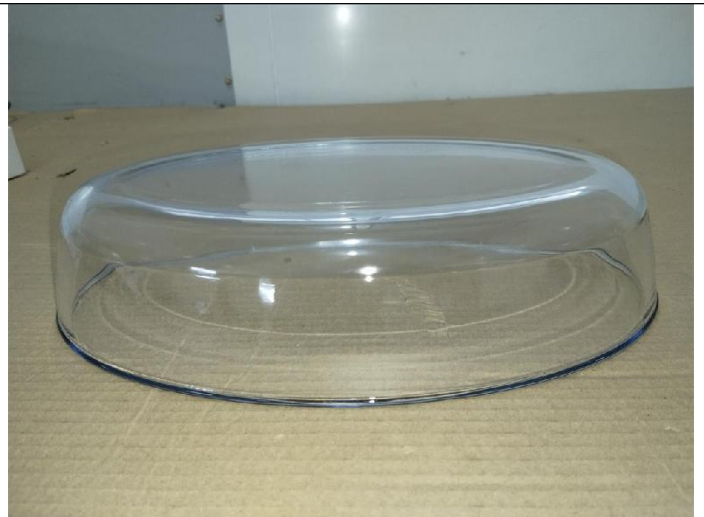
Product view



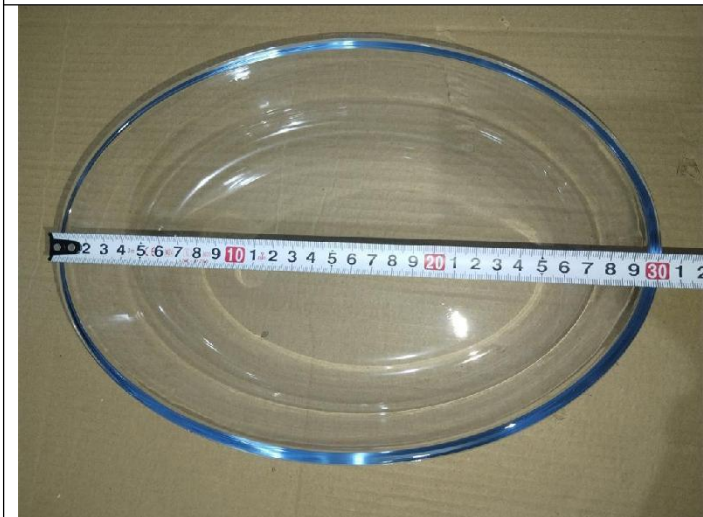
Product view



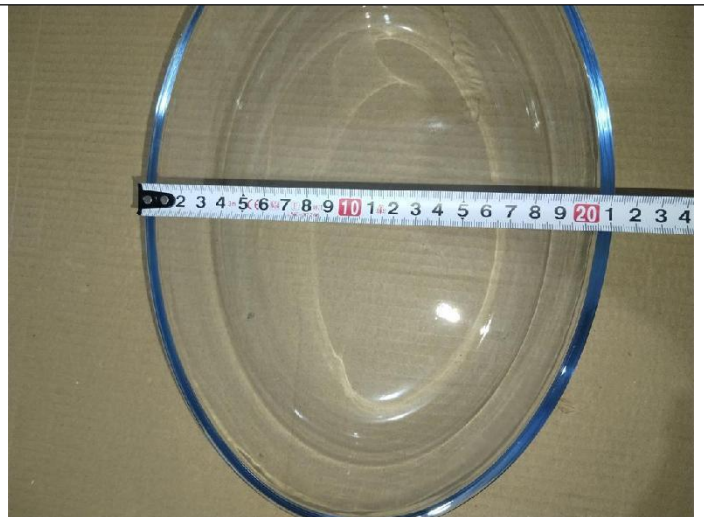
Product view



Product view



Product size



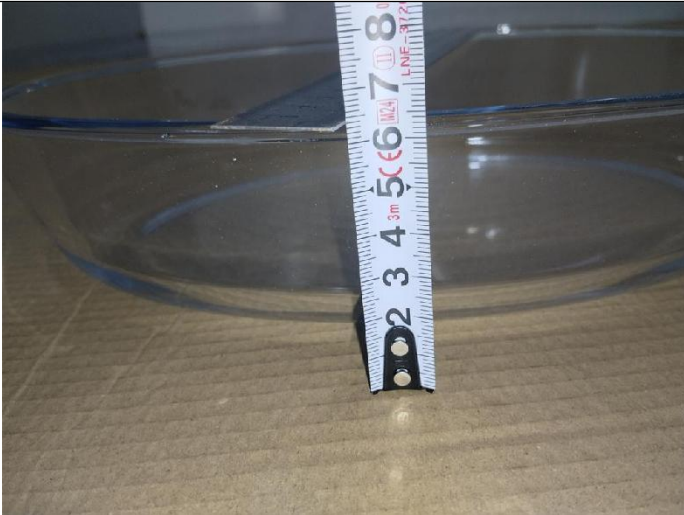
Product size



MT-INSPECTION

Final Random Inspection Report

Report No.: MT-20260522-004



Product size



Product weight



Volume test

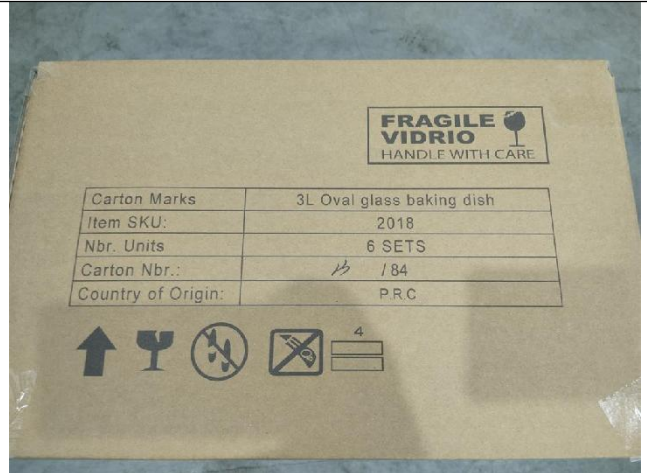


Volume test

9 - Item:2018



Carton view



Carton view



MT-INSPECTION

Final Random Inspection Report

Report No.: MT-20260522-004



Carton view



Open the carton



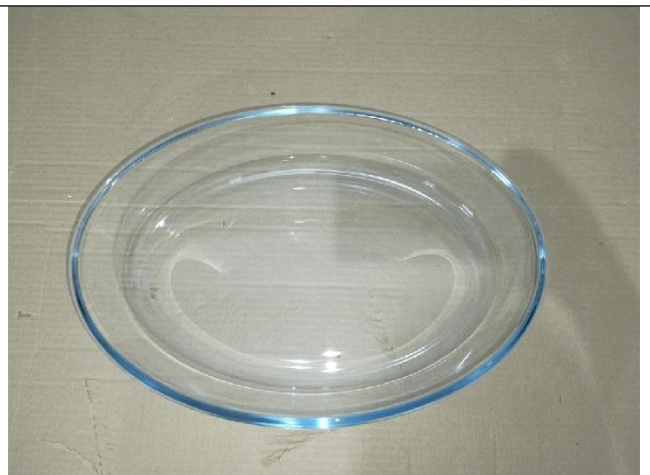
Product view



Product view



Product view



Product view



MT-INSPECTION

Final Random Inspection Report

Report No.: MT-20260522-004



Product view



Product view



Product view



Product view



Product view



Product view



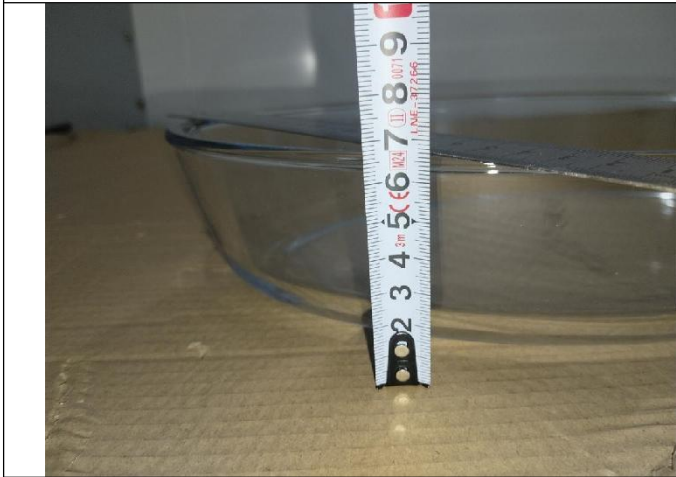
Final Random Inspection Report



Product size



Product size



Product size



Product weight



Volume test



Volume test

10 - Item:2019



Final Random Inspection Report



Carton view



Carton view

Carton Marks	4L Oval glass baking dish
Item SKU:	2019
Nbr. Units	6 SETS
Carton Nbr.:	66 / 84
Country of Origin:	P.R.C



Carton view

N.W.: 10.2 KGS
 G.W.: 11.65 KGS
 C/N MESA: 44.7x40.9x31.6 CM



Open the carton



Product view



Product view



MT-INSPECTION

Final Random Inspection Report

Report No.: MT-20260522-004



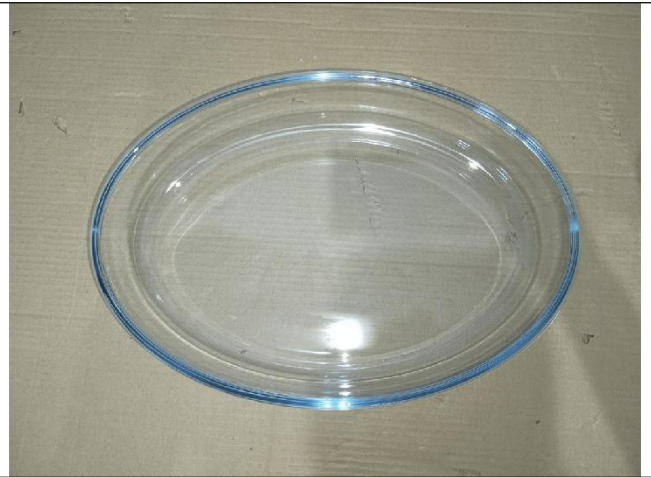
Product view



Product view



Product view



Product view



Product view



Product view



MT-INSPECTION

Final Random Inspection Report

Report No.: MT-20260522-004



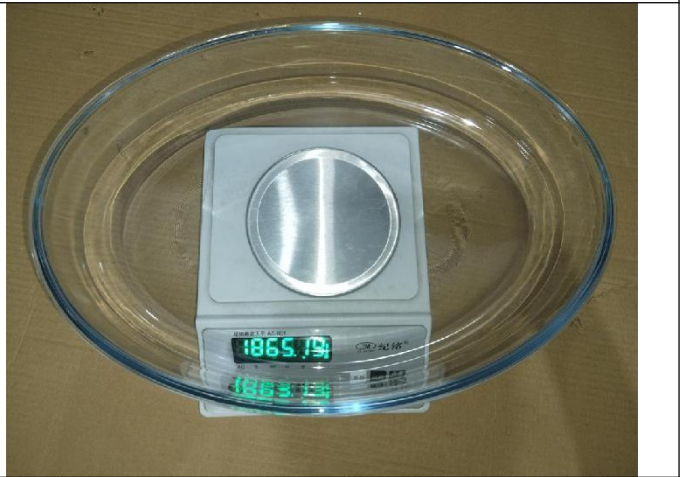
Product size



Product size



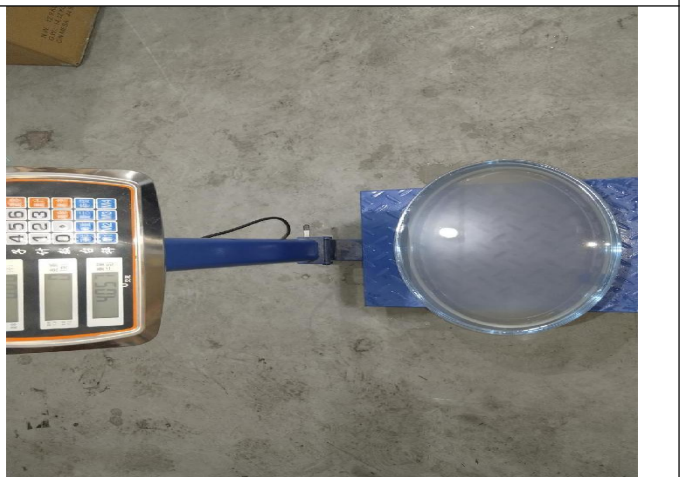
Product size



Product weight



Volume test



Volume test

11 - Item:3033



MT-INSPECTION

Final Random Inspection Report

Report No.: MT-20260522-004



Carton view



Carton view



Carton view



Open the carton



Product view



Product view



Final Random Inspection Report



Product view



Product view



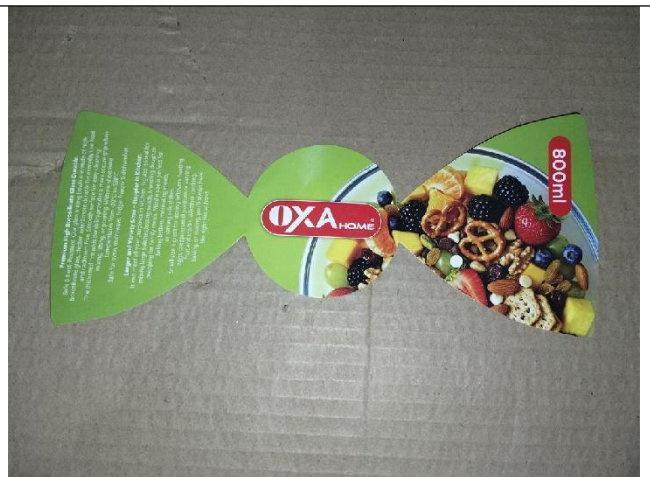
Product view



Product view



Product view



Product view



MT-INSPECTION

Final Random Inspection Report

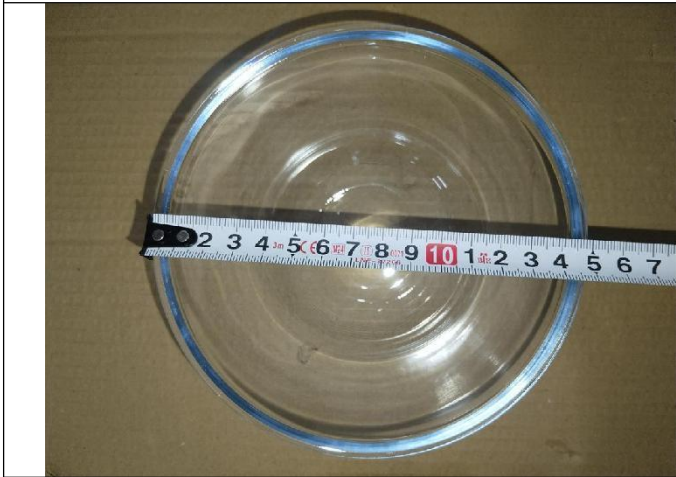
Report No.: MT-20260522-004



Product view



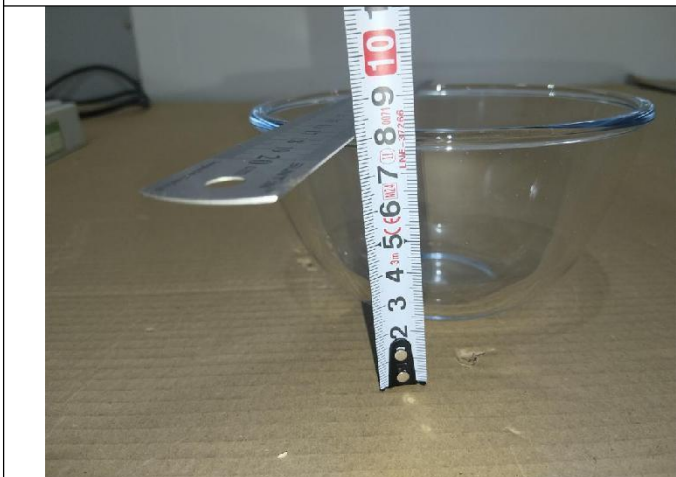
Product view



Product size



Product size



Product size



Product weight



MT-INSPECTION

Final Random Inspection Report

Report No.: MT-20260522-004



Volume test



Volume test

12 - Item:3034



Carton view



Carton view



Carton view



Open the carton



MT-INSPECTION

Final Random Inspection Report

Report No.: MT-20260522-004



Product view



Product view



Product view



Product view



Product view



Product view



MT-INSPECTION

Final Random Inspection Report

Report No.: MT-20260522-004



Product view



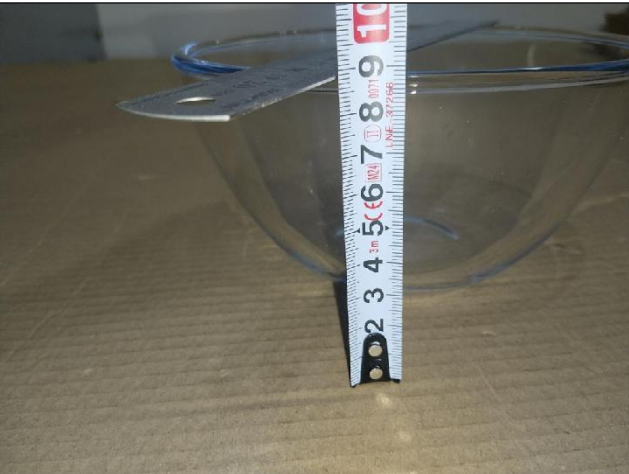
Product view



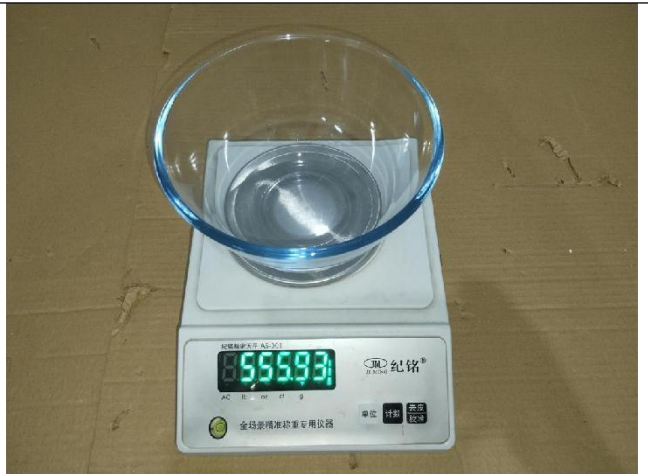
Product size



Product size



Product size



Product weight



MT-INSPECTION

Final Random Inspection Report

Report No.: MT-20260522-004



Volume test



Volume test

13 - Item:3035



Carton view



Carton view



Carton view



Open the carton



MT-INSPECTION

Final Random Inspection Report

Report No.: MT-20260522-004



Product view



Product view



Product view



Product view



Product view



Product view



MT-INSPECTION

Final Random Inspection Report

Report No.: MT-20260522-004



Product view



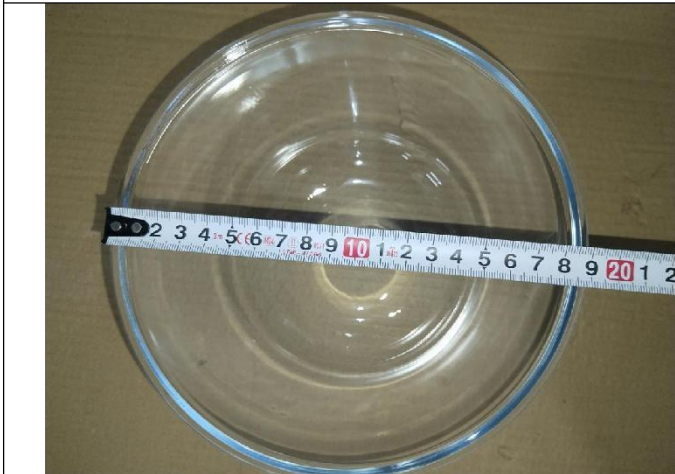
Product view



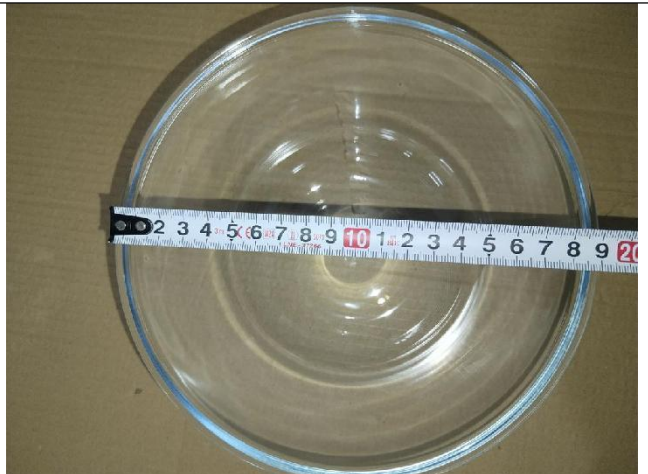
Product view



Product view



Product size



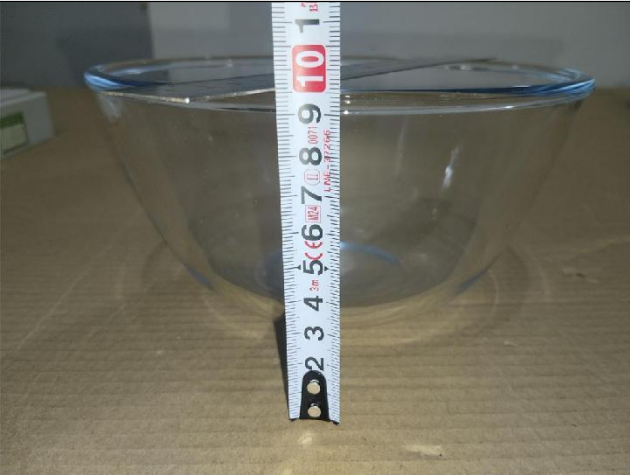
Product size



MT-INSPECTION

Final Random Inspection Report

Report No.: MT-20260522-004



Product size



Product weight



Volume test



Volume test

14 - Item:3036



Carton view



Carton view



MT-INSPECTION

Final Random Inspection Report

Report No.: MT-20260522-004



Carton view



Open the carton



Product view



Product view



Product view



Product view



MT-INSPECTION

Final Random Inspection Report

Report No.: MT-20260522-004



Product view



Product view



Product view



Product view



Product view



Product view



MT-INSPECTION

Final Random Inspection Report

Report No.: MT-20260522-004

<p>Product size</p>	<p>Product size</p>
<p>Product size</p>	<p>Product weight</p>
<p>Volume test</p>	<p>Volume test</p>
<p>15 - Item:3037</p>	



MT-INSPECTION

Final Random Inspection Report

Report No.: MT-20260522-004



Carton view



Carton view



Carton view



Carton view



Open the carton



Open the carton



MT-INSPECTION

Final Random Inspection Report

Report No.: MT-20260522-004



Product view



Product view



Product view



Product view



Product view



Product view



Final Random Inspection Report



Product view



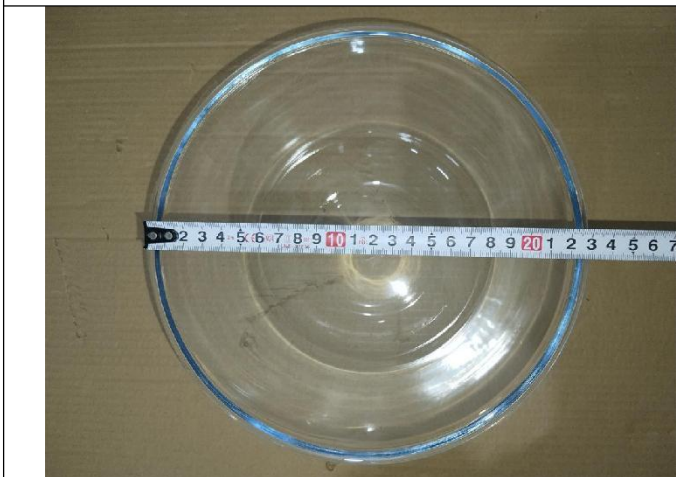
Product view



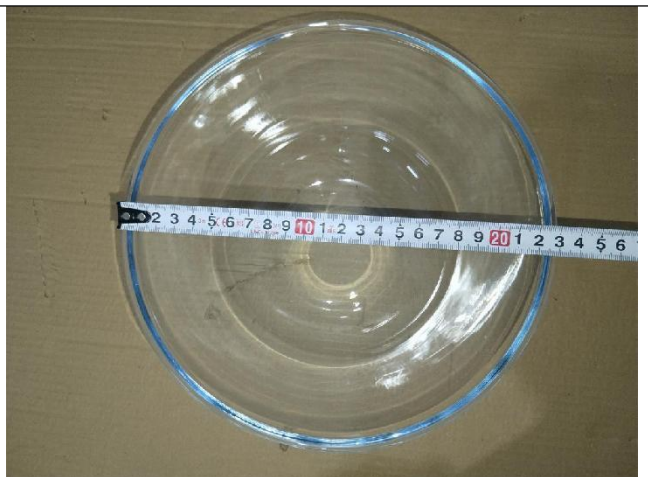
Product view



Product view



Product size



Product size



MT-INSPECTION

Final Random Inspection Report

Report No.: MT-20260522-004



Product size



Product weight



Volume test

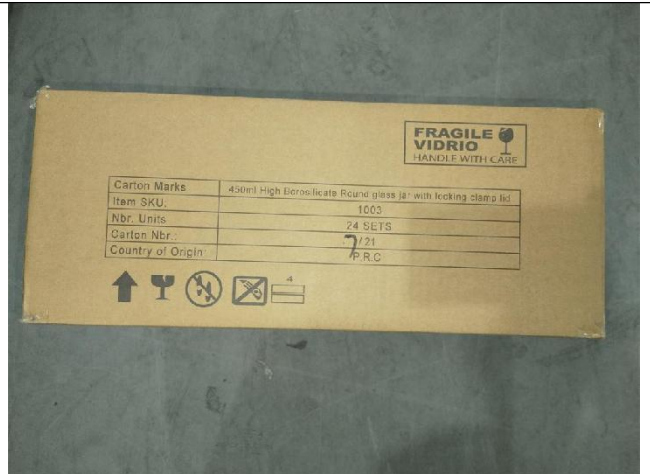


Volume test

16 - Item:1003



Carton view



Carton view



MT-INSPECTION

Final Random Inspection Report

Report No.: MT-20260522-004



Carton view



Open the carton



Product view



Product view



Product view



Product view



Final Random Inspection Report



Product view



Product view



Product view



Product view



Product view



Product view



Final Random Inspection Report



Product view



Product view



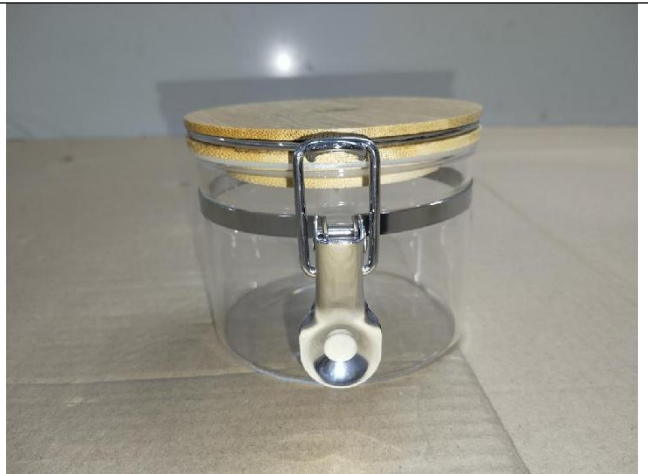
Product view



Product view



Product view



Product view



Final Random Inspection Report



Product view



Product view



Product view



Product view



Product view



Product view



Product view



Product view



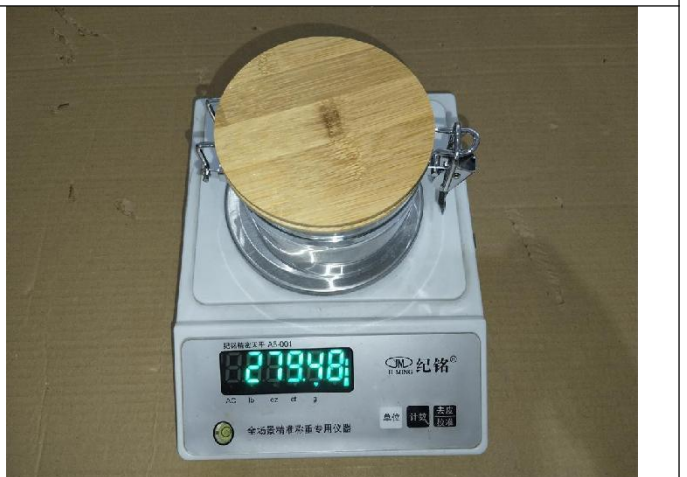
Product size



Product size



Product size



Product weight



MT-INSPECTION

Final Random Inspection Report

Report No.: MT-20260522-004



Volume test



Volume test



Volume test



Sealing test



Sealing test

N/A

N/A

17 - Item:1004



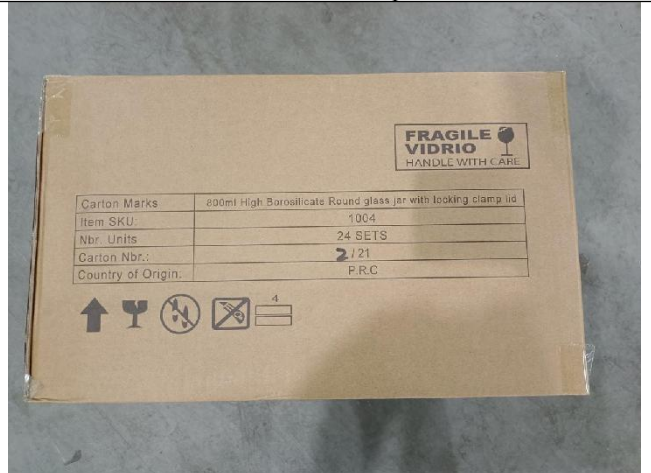
MT-INSPECTION

Final Random Inspection Report

Report No.: MT-20260522-004



Carton view



Carton view



Carton view



Open the carton



Product view



Product view



Final Random Inspection Report



Product view



Product view



Product view



Product view



Product view



Product view



Final Random Inspection Report



Product view



Product view



Product view



Product view



Product view



Product view



MT-INSPECTION

Final Random Inspection Report

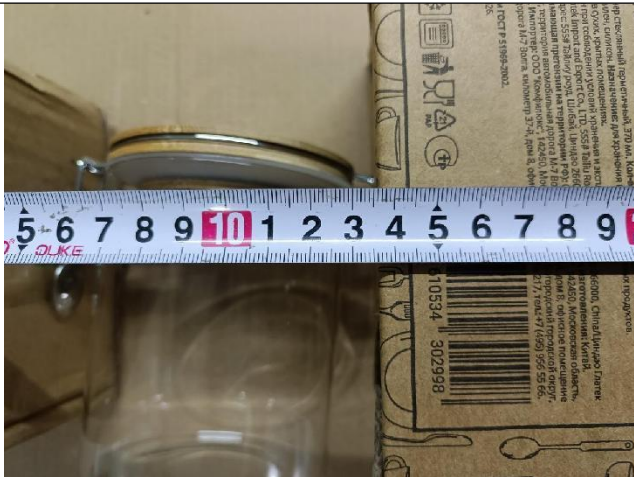
Report No.: MT-20260522-004



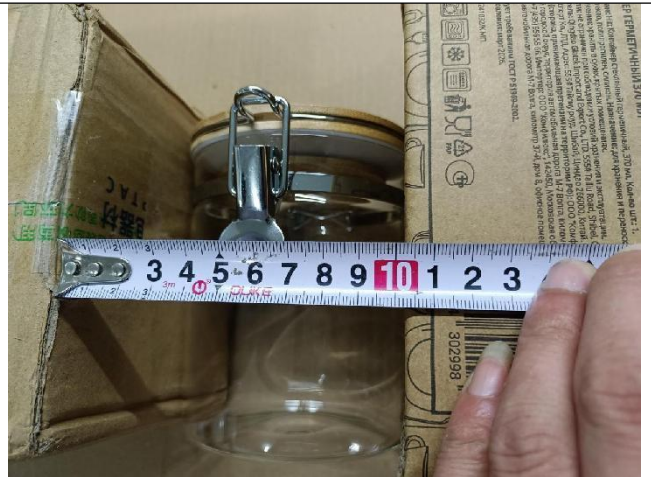
Product view



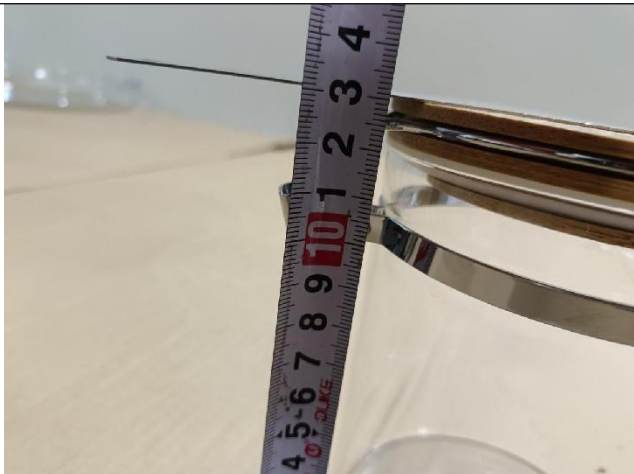
Product view



Product size



Product size



Product size



Product weight



Final Random Inspection Report



Volume test



Sealing test



Sealing test

N/A

N/A

18 - Item:1005



Carton view



Carton view



Final Random Inspection Report



Carton view



Open the carton



Product view



Product view



Product view



Product view



Final Random Inspection Report



Product view



Product view



Product view



Product view



Product view



Product view



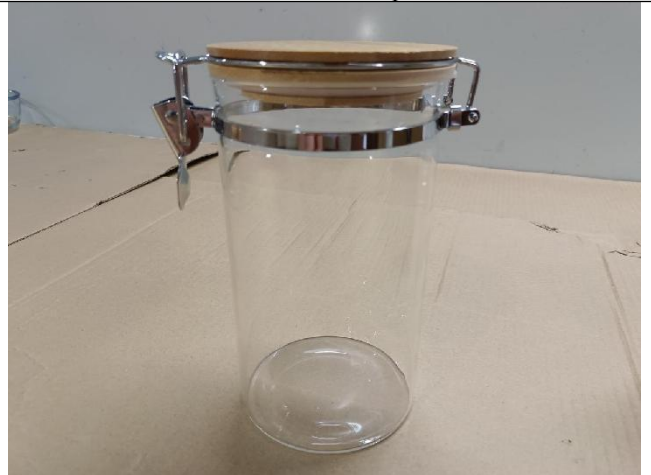
MT-INSPECTION

Final Random Inspection Report

Report No.: MT-20260522-004



Product view



Product view



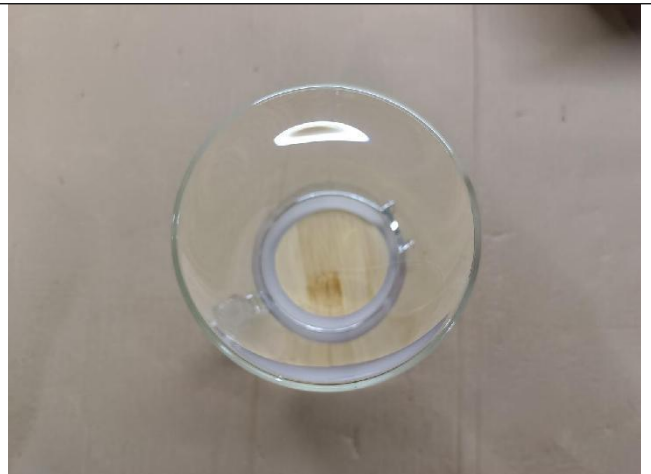
Product view



Product view



Product view



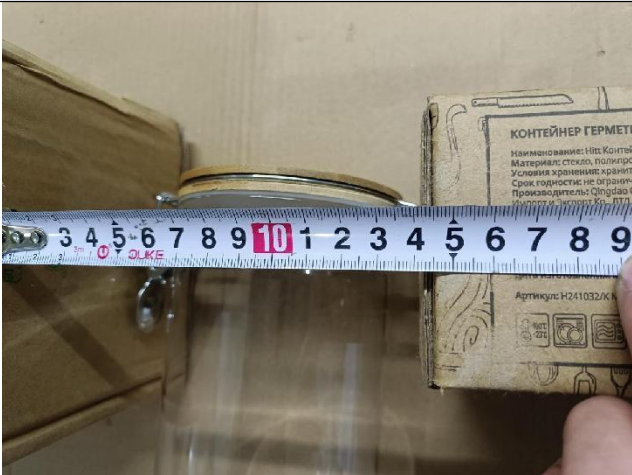
Product view



MT-INSPECTION

Final Random Inspection Report

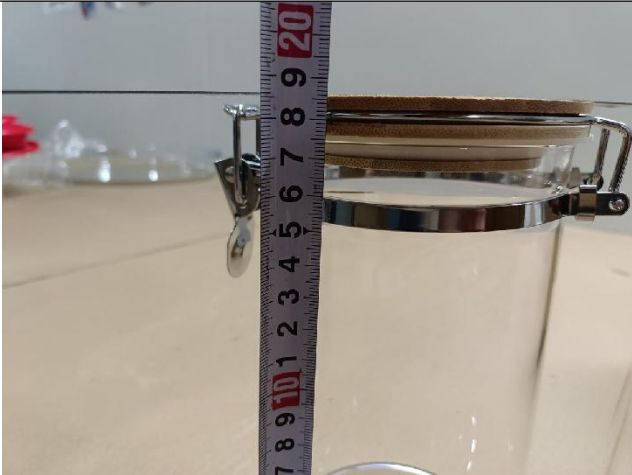
Report No.: MT-20260522-004



Product size



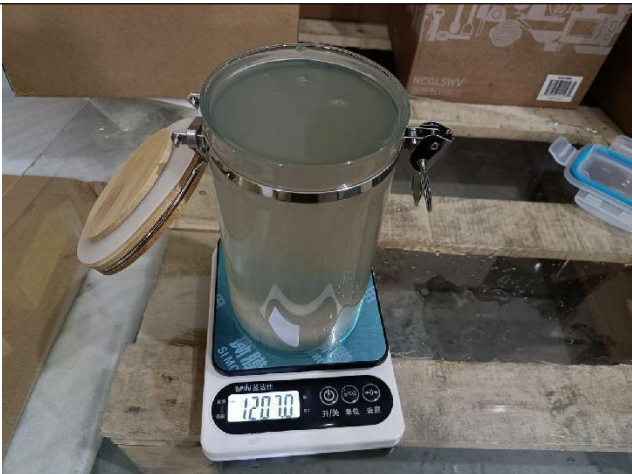
Product size



Product size



Product weight



Volume test



Sealing test



MT-INSPECTION

Final Random Inspection Report

Report No.: MT-20260522-004



Sealing test



Functional test



Functional test

N/A

N/A

19 - Item:YL-XZEC 4SET



Carton view



Carton view



MT-INSPECTION

Final Random Inspection Report

Report No.: MT-20260522-004



Carton view



Open the carton



Product view



Product view



Product view



Product view



MT-INSPECTION

Final Random Inspection Report

Report No.: MT-20260522-004



Product view



Product view



Product view



Product view



Product view



Product view



Final Random Inspection Report



Product view



Product view



Product view



Product view






Product view



Product view



Final Random Inspection Report

	
Product view	Product view
	
Product view	Product view
	
Product view	Product view



Final Random Inspection Report



Product view



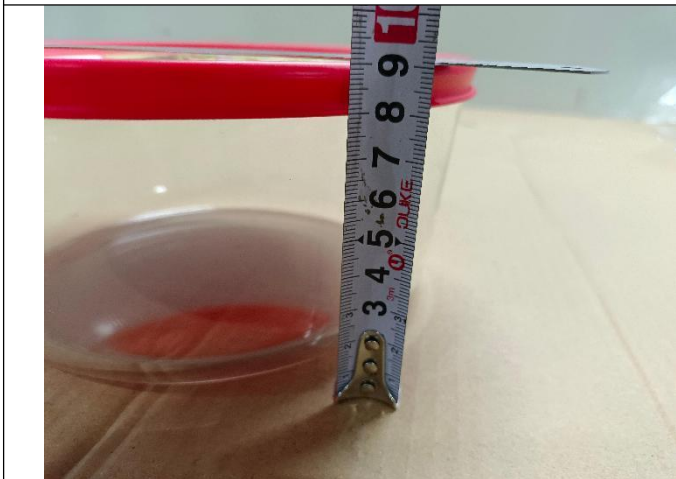
Product view



Product size



Product size



Product size



Product weight



MT-INSPECTION

Final Random Inspection Report

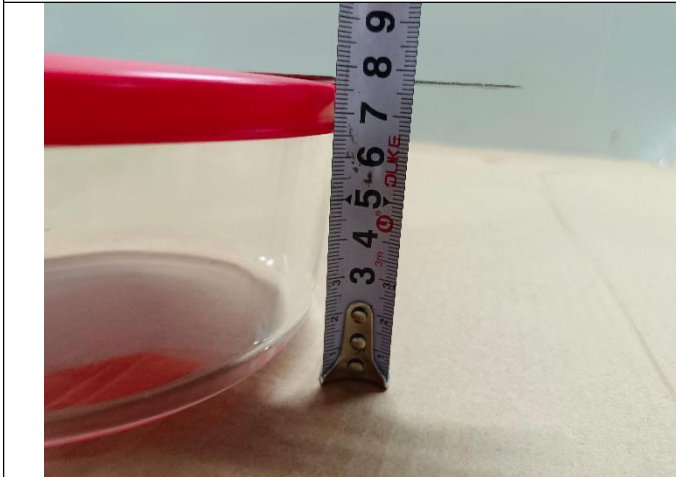
Report No.: MT-20260522-004



Product size



Product size



Product size



Product weight



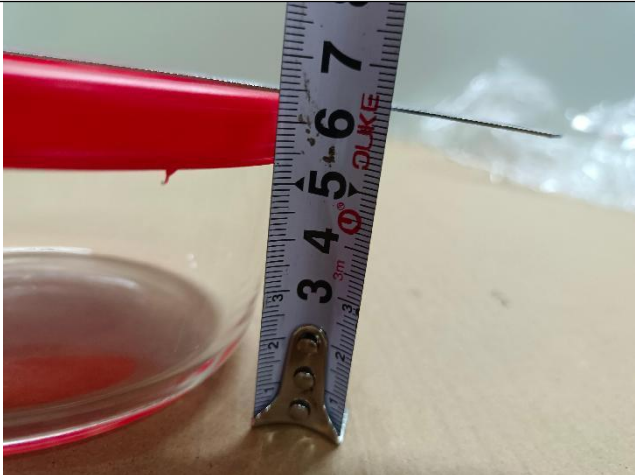
Product size



Product size



Final Random Inspection Report



Product size



Product weight



Product weight



Product size



Product size



Product size



MT-INSPECTION

Final Random Inspection Report

Report No.: MT-20260522-004



Volume test



Volume test



Volume test



Volume test

20 - Item:YL-XZEC 3SET



Carton view



Carton view



MT-INSPECTION

Final Random Inspection Report

Report No.: MT-20260522-004



Carton view



Open the carton



Product view



Product view



Product view



Product view



MT-INSPECTION

Final Random Inspection Report

Report No.: MT-20260522-004



Product view



Product view



Product view



Product view



Product view



Product view



MT-INSPECTION

Final Random Inspection Report

Report No.: MT-20260522-004



Product view



Product view



Product view



Product view



Product view



Product view



MT-INSPECTION

Final Random Inspection Report

Report No.: MT-20260522-004



Product view



Product view



Product view



Product view



Product size



Product size



MT-INSPECTION

Final Random Inspection Report

Report No.: MT-20260522-004



Product size



Product weight



Product size



Product size



Product size



Product weight



MT-INSPECTION

Final Random Inspection Report

Report No.: MT-20260522-004



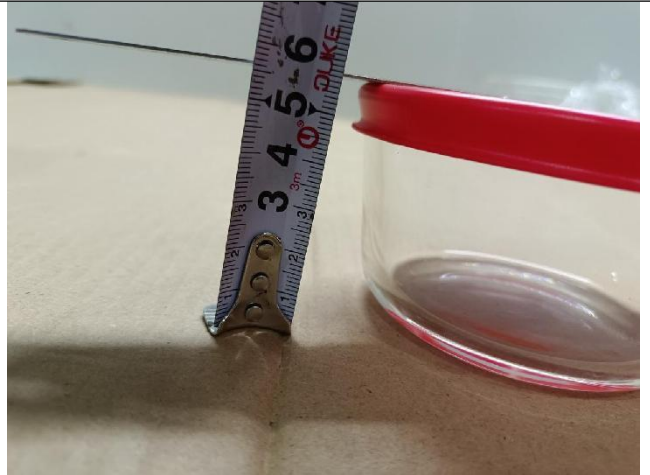
Product weight



Product size



Product size



Product size



Volume test



Volume test



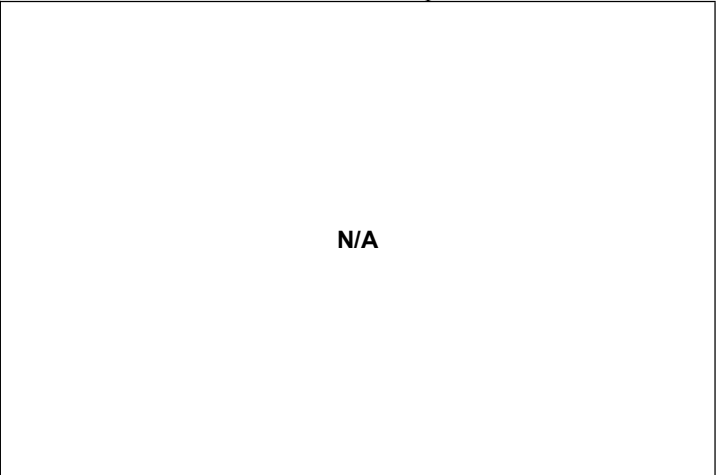
MT-INSPECTION

Final Random Inspection Report

Report No.: MT-20260522-004



Volume test



N/A



N/A

21 - Item:4030



Carton view



Carton view



Carton view



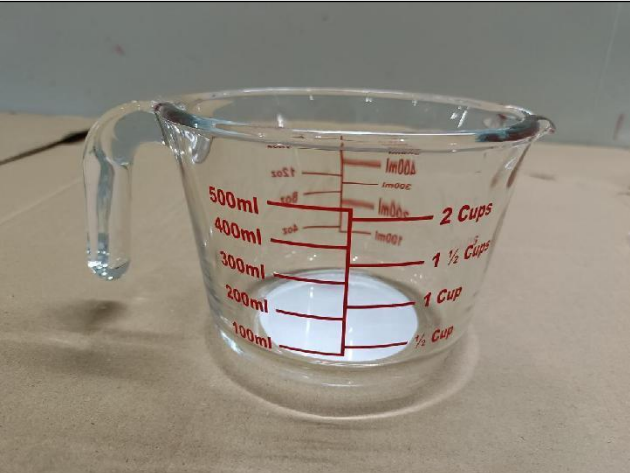
Open the carton



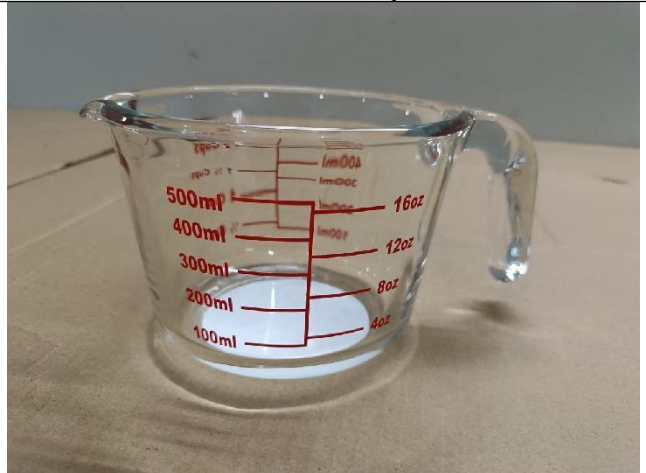
MT-INSPECTION

Final Random Inspection Report

Report No.: MT-20260522-004



Product view



Product view



Product view



Product view



Product view



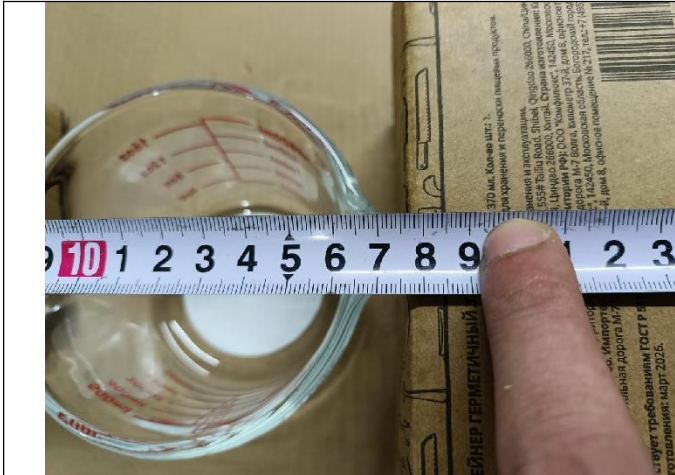
Product view



MT-INSPECTION

Final Random Inspection Report

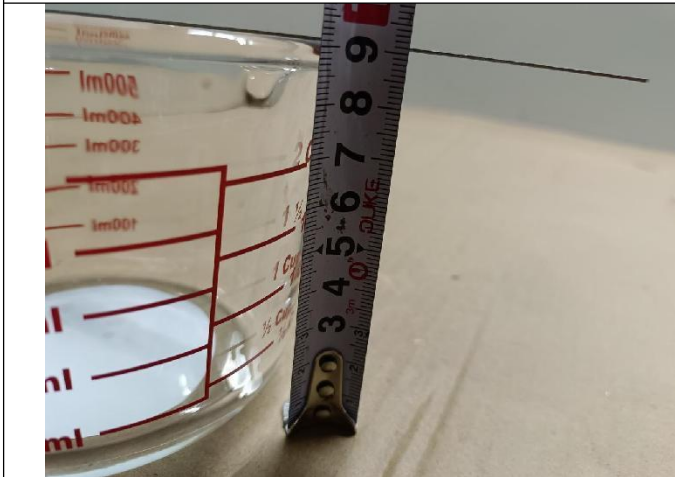
Report No.: MT-20260522-004



Product size



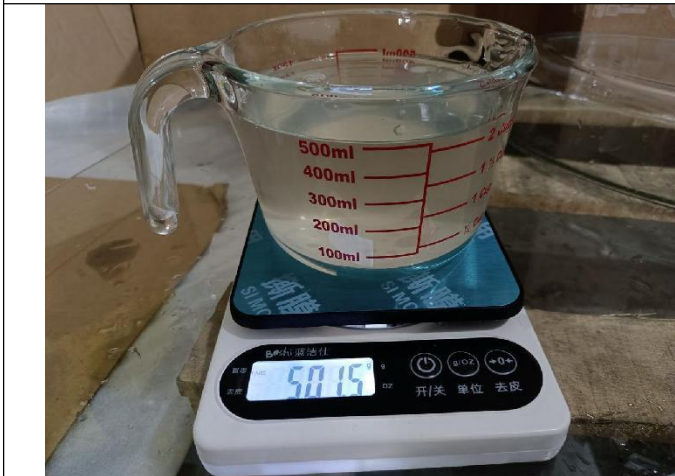
Product size



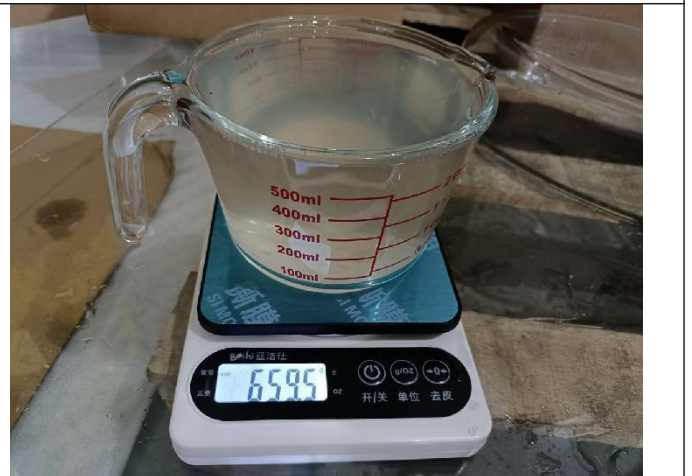
Product size



Product weight



Volume test



Volume test

22 - Item:4031



MT-INSPECTION

Final Random Inspection Report

Report No.: MT-20260522-004



Carton view



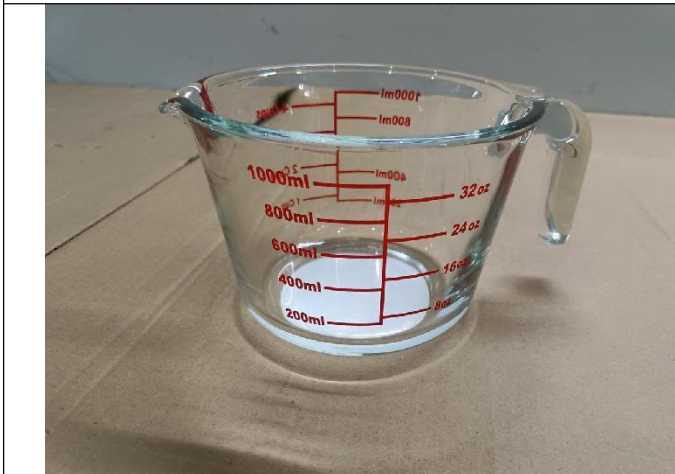
Carton view



Carton view



Open the carton



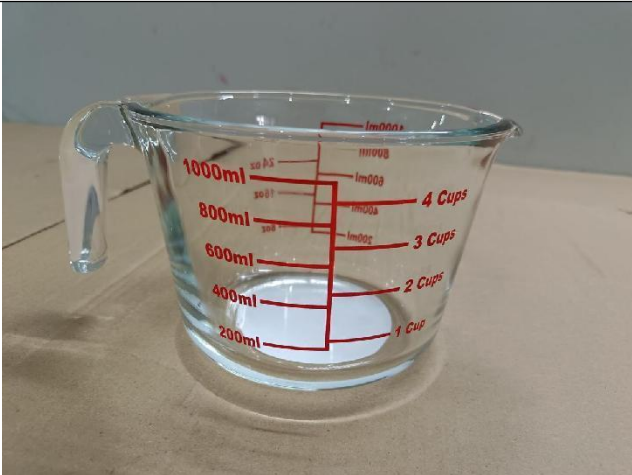
Product view



Product view



Final Random Inspection Report



Product view



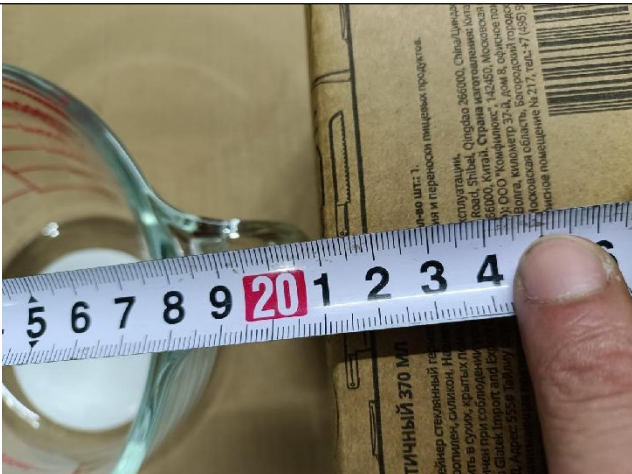
Product view



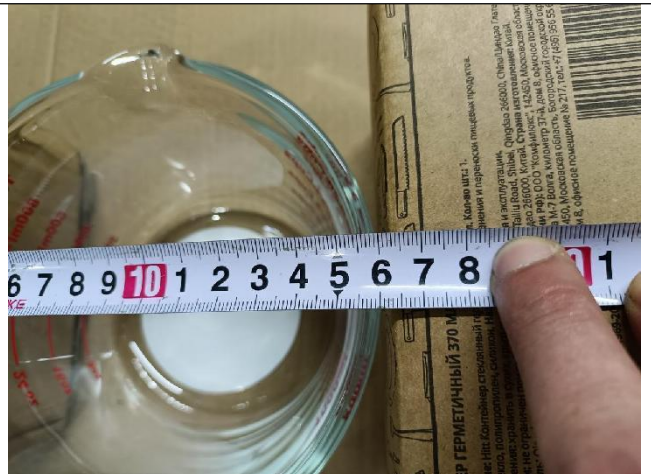
Product view



Product view



Product size



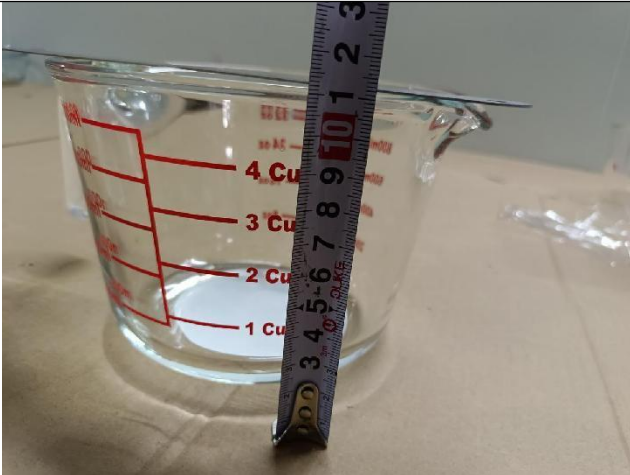
Product size



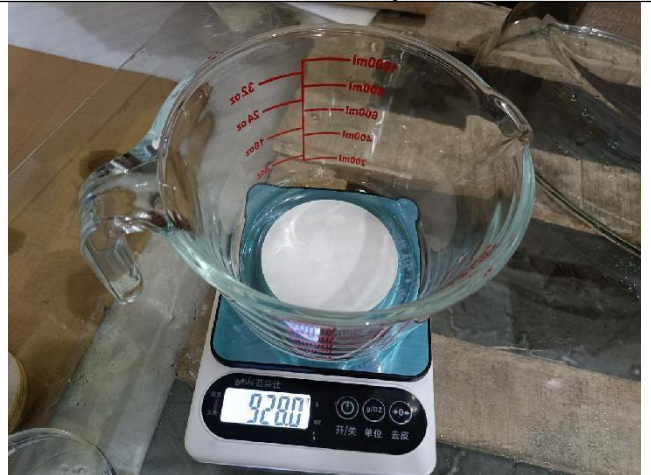
MT-INSPECTION

Final Random Inspection Report

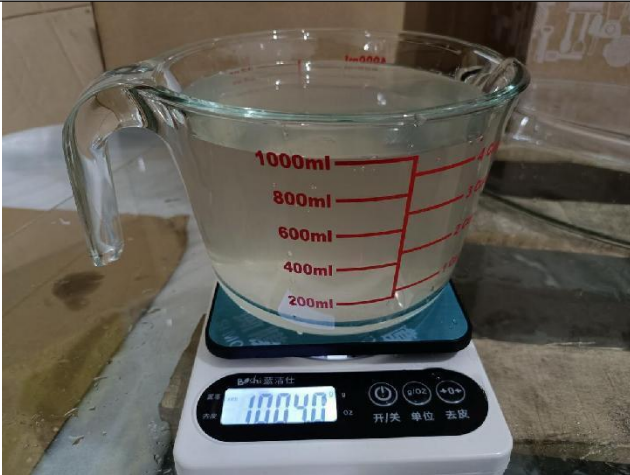
Report No.: MT-20260522-004



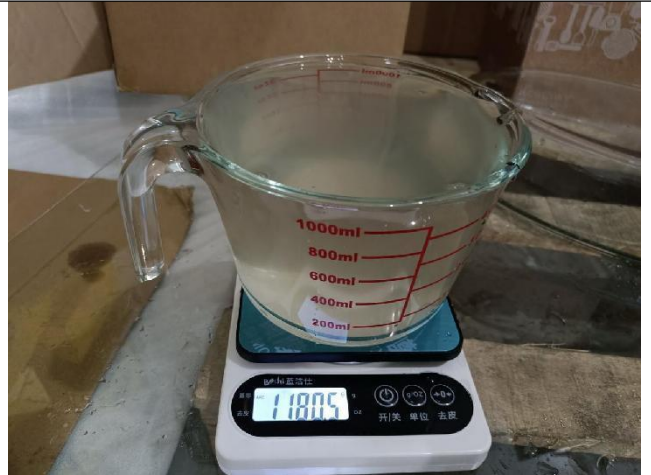
Product size



Product weight



Volume test



Volume test

23 - Item:1131



Carton view



Carton view



MT-INSPECTION

Final Random Inspection Report

Report No.: MT-20260522-004



Carton view



Open the carton



Product view



Product view



Product view



Product view



MT-INSPECTION

Final Random Inspection Report

Report No.: MT-20260522-004



Product view



Product view



Product view



Product view



Product view



Product view



MT-INSPECTION

Final Random Inspection Report

Report No.: MT-20260522-004



Product view



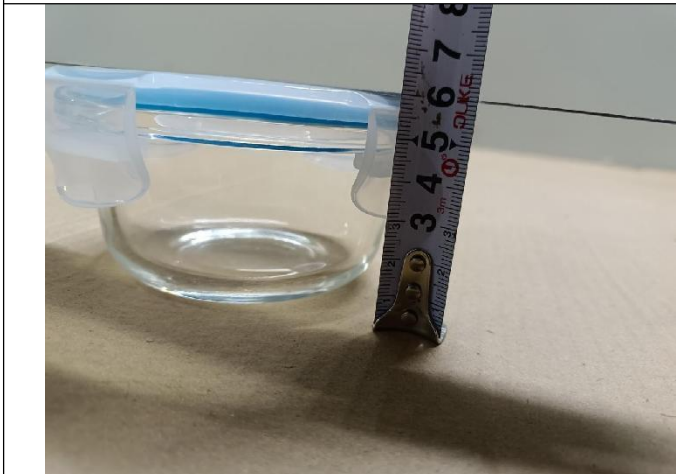
Product view



Product size



Product size



Product size



Product weight



MT-INSPECTION

Final Random Inspection Report

Report No.: MT-20260522-004

<p>Volume test</p>	<p>Sealing test</p>
<p>Sealing test</p>	<p>Functional test</p>
	<p>N/A</p>
<p>Functional test</p>	<p>N/A</p>
<p>24 - Item:1132</p>	



MT-INSPECTION

Final Random Inspection Report

Report No.: MT-20260522-004



Carton view



Carton view

Carton Marks	400ml Round High Borosilicate glass food container with airtight lid
Item SKU:	1132
Nbr. Units	24 SETS
Carton Nbr.:	12 / 21
Country of Origin:	P.R.C



Carton view

N.W.: 7.68 KGS
 G.W.: 8.44 KGS
 C/N MESA: 41.6x28.1x28.6 CM



Open the carton



Product view



Product view



Product view



Product view



Product view



Product view



Product view



Product view



Final Random Inspection Report



Product view



Product view



Product view



Product view



Product size



Product size



MT-INSPECTION

Final Random Inspection Report

Report No.: MT-20260522-004



Product size



Product weight



Volume test



Sealing test



Sealing test



Functional test



MT-INSPECTION

Final Random Inspection Report

Report No.: MT-20260522-004



Functional test

N/A

N/A

25-Item:1133



Carton view



Carton view

Carton Marks	620ml Round High Borosilicate glass food container with airtight lid
Item SKU:	1133
Nbr. Units	24 SETS
Carton Nbr.:	3 / 21
Country of Origin:	P.R.C



Carton view

N.W.: 10.56 KGS
 G.W.: 11.56 KGS
 C/N MESA: 47.6x32x32.3 CM



Open the carton



Final Random Inspection Report



Product view



Product view



Product view



Product view



Product view



Product view



MT-INSPECTION

Final Random Inspection Report

Report No.: MT-20260522-004



Product view



Product view



Product view



Product view



Product view



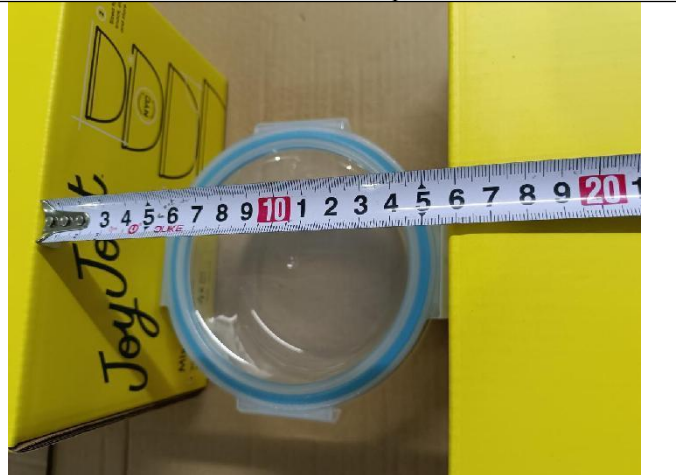
Product view



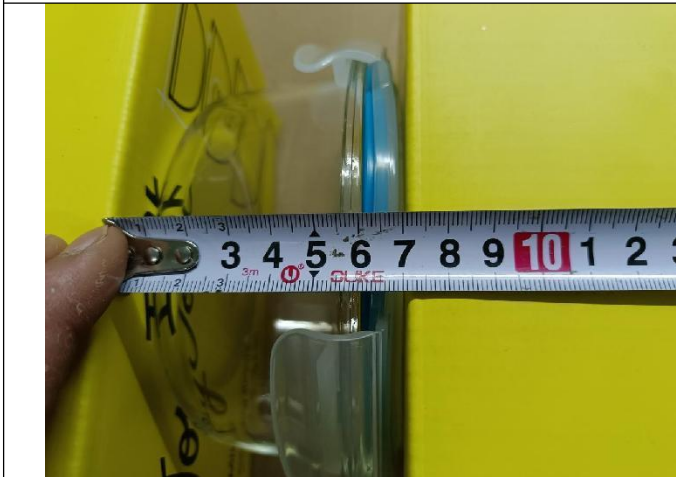
Final Random Inspection Report



Product size



Product size



Product size



Product weight



Volume test



Sealing test



MT-INSPECTION

Final Random Inspection Report

Report No.: MT-20260522-004



Functional test



Functional test

26 - Item:1134



Carton view



Carton view



Carton view



Open the carton



Final Random Inspection Report



Product view



Product view



Product view



Product view



Product view



Product view



Final Random Inspection Report



Product view



Product view



Product view



Product view



Product view



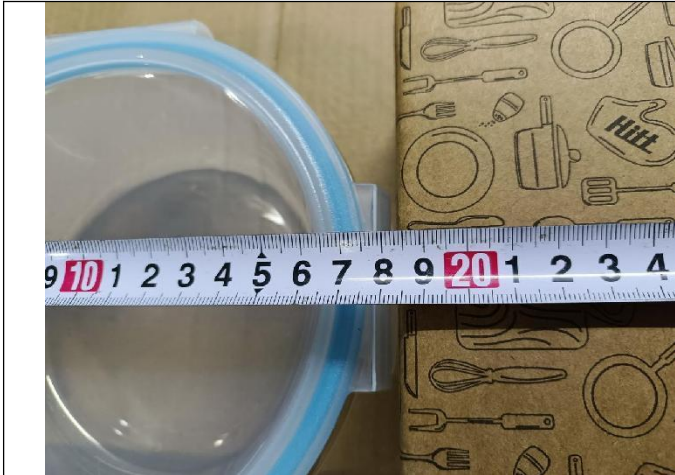
Product view



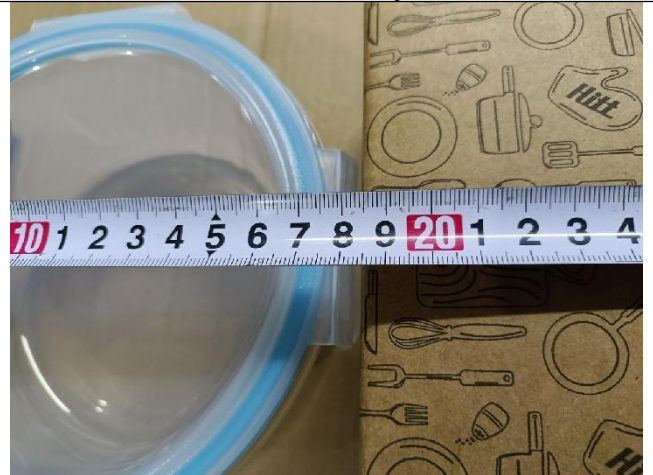
MT-INSPECTION

Final Random Inspection Report

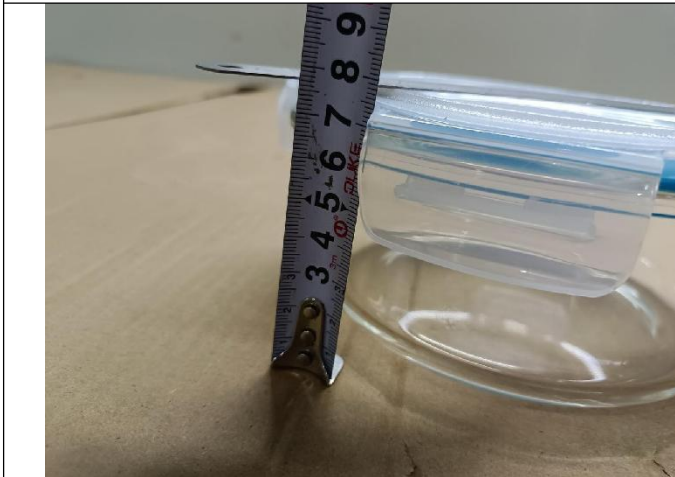
Report No.: MT-20260522-004



Product size



Product size



Product size



Product weight



Volume test



Sealing test



MT-INSPECTION

Final Random Inspection Report

Report No.: MT-20260522-004



Sealing test

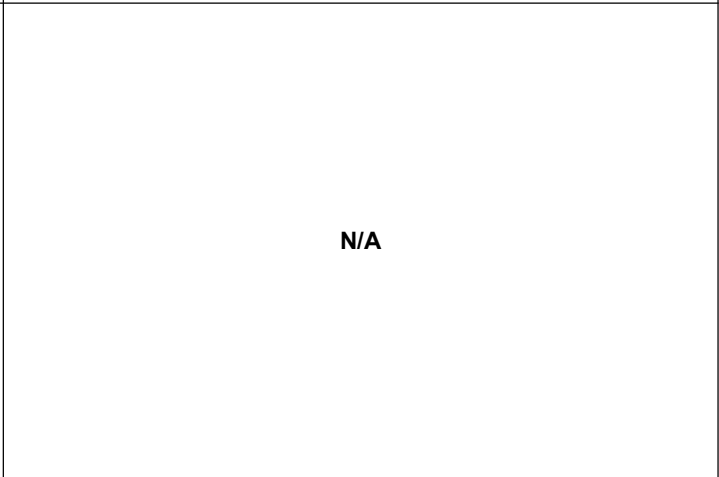


Functional test



Functional test

N/A



N/A

27 - Item:1135



Carton view



Carton view

Carton Marks	1300ml Round High Borosilicate glass food container with airtight lid
Item SKU:	1135
Nbr. Units	12 SETS
Carton Nbr.:	9 / 42
Country of Origin:	P.R.C





MT-INSPECTION

Final Random Inspection Report

Report No.: MT-20260522-004



Carton view



Open the carton



Product view



Product view



Product view



Product view



MT-INSPECTION

Final Random Inspection Report

Report No.: MT-20260522-004



Product view



Product view



Product view



Product view



Product view



Product view



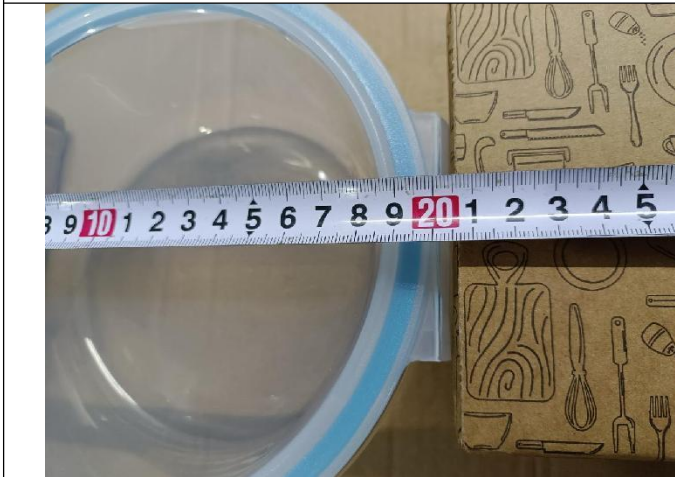
Final Random Inspection Report



Product view



Product view



Product size



Product size



Product size



Product weight



MT-INSPECTION

Final Random Inspection Report

Report No.: MT-20260522-004

<p>Volume test</p>	<p>Sealing test</p>
<p>Sealing test</p>	<p>Functional test</p>
	<p>N/A</p>
<p>Functional test</p>	<p>N/A</p>
<p>28 - Item:1120</p>	



MT-INSPECTION

Final Random Inspection Report

Report No.: MT-20260522-004



Carton view



Carton view

Carton Marks	180ml Square High Borosilicate glass food container with airtight lid
Item SKU	1120
Nbr. Units	36 SETS
Carton Nbr.	3 / 14
Country of Origin	P.R.C



Carton view

N.W.: 8.6 KGS
 G.W.: 9.3 KGS
 C/N MESA: 39.7x29.3x24 CM



Open the carton



Product view



Product view



MT-INSPECTION

Final Random Inspection Report

Report No.: MT-20260522-004



Product view



Product view



Product view



Product view



Product view



Product view



Final Random Inspection Report



Product view



Product view



Product view



Product view



Product size



Product size



MT-INSPECTION

Final Random Inspection Report

Report No.: MT-20260522-004



Product size



Volume test



Sealing test



Sealing test



Functional test



Functional test

29 - Item:1121



MT-INSPECTION

Final Random Inspection Report

Report No.: MT-20260522-004



Carton view



Carton view



Carton view



Open the carton



Product view



Product view



MT-INSPECTION

Final Random Inspection Report

Report No.: MT-20260522-004



Product view



Product view



Product view



Product view



Product view



Product view



Final Random Inspection Report



Product view



Product view



Product view



Product view



Product size



Product size



MT-INSPECTION

Final Random Inspection Report

Report No.: MT-20260522-004



Product size



Product weight



Volume test



Sealing test



Sealing test



Functional test



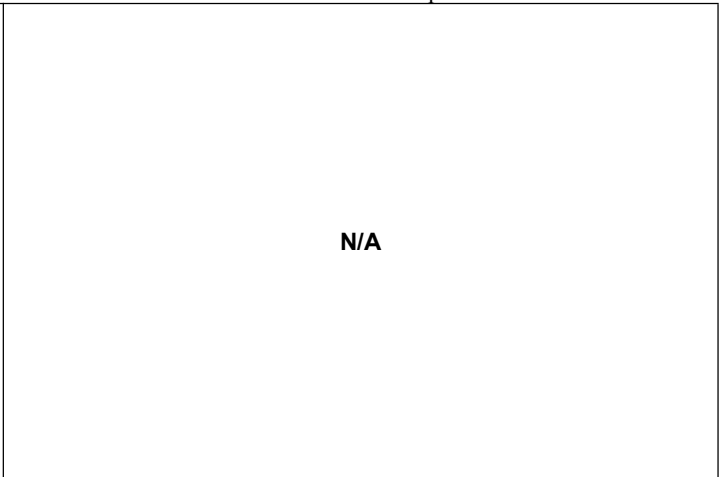
MT-INSPECTION

Final Random Inspection Report

Report No.: MT-20260522-004



Functional test



N/A

N/A

30 - Item:1122



Carton view



Carton view

Carton Marks	840ml Rect High Borosilicate glass food container with airtight lid
Item SKU:	1122
Nbr. Units	24 SETS
Carton Nbr.:	15 / 21
Country of Origin:	P.R.C



Carton view

N.W.: 11.52 KGS
G.W.: 12.57 KGS
C/N MESA: 42.3x38.2x29 CM



Open the carton



MT-INSPECTION

Final Random Inspection Report

Report No.: MT-20260522-004



Product view



Product view



Product view



Product view



Product view



Product view



Final Random Inspection Report



Product view



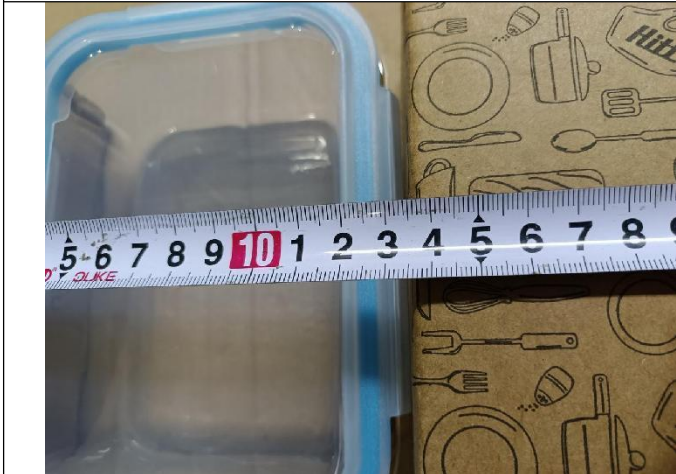
Product view



Product view



Product view



Product size



Product size



MT-INSPECTION

Final Random Inspection Report

Report No.: MT-20260522-004



Product size



Product weight



Volume test



Sealing test



Sealing test



Functional test



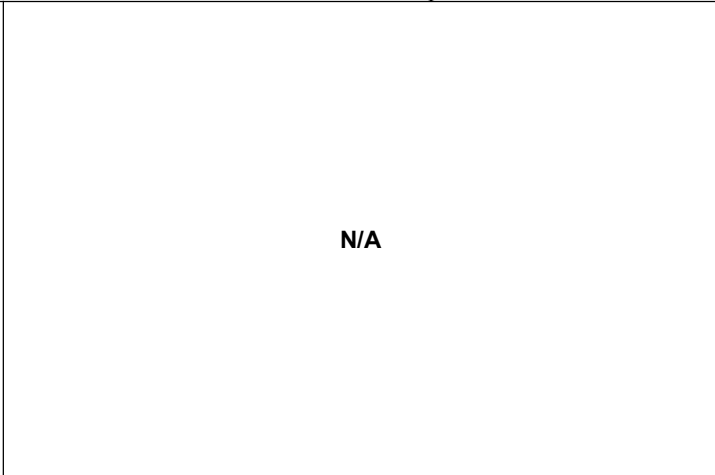
MT-INSPECTION

Final Random Inspection Report

Report No.: MT-20260522-004



Functional test



N/A

N/A

31 - Item:1123



Carton view



Carton view



Carton view



Open the carton



Final Random Inspection Report



Product view



Product view



Product view



Product view



Product view



Product view



MT-INSPECTION

Final Random Inspection Report

Report No.: MT-20260522-004



Product view



Product view



Product view



Product view



Product view



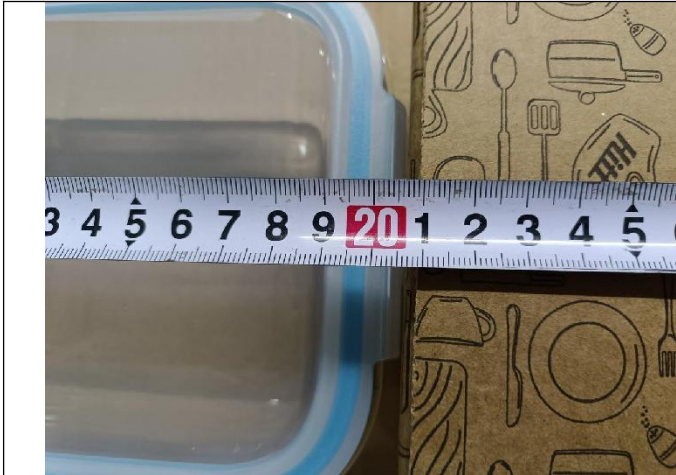
Product view



MT-INSPECTION

Final Random Inspection Report

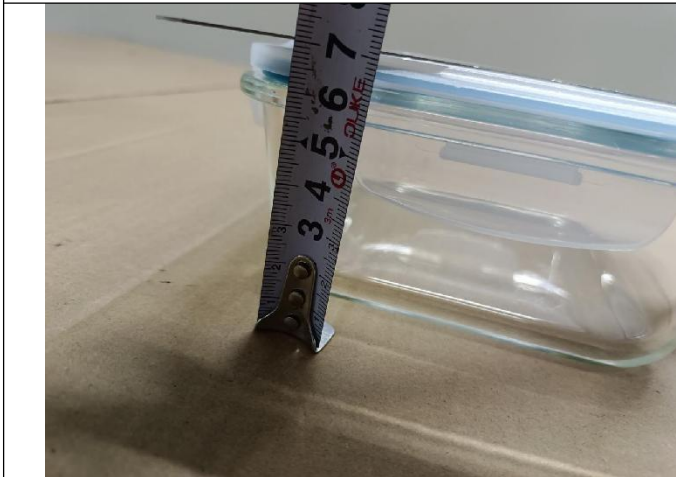
Report No.: MT-20260522-004



Product size



Product size



Product size



Product weight



Volume test



Sealing test



MT-INSPECTION

Final Random Inspection Report

Report No.: MT-20260522-004



Sealing test



Functional test



Functional test

N/A

N/A

32 - Item:1127



Carton view



Carton view

FRAGILE VIDRIO HANDLE WITH CARE	
Carton Marks	320ml Square High Borosilicate glass food container with airtight lid
Item SKU:	1127
Nbr. Units	24 SETS
Carton Nbr.	1 / 21
Country of Origin:	P.R.C

↑ 🍷 🚫🔪 📦
4



Final Random Inspection Report



Carton view



Open the carton



Product view



Product view



Product view



Product view



Product view



Product view



Product view



Product view



Product view



Product view



Final Random Inspection Report



Product view



Product view



Product size



Product size



Product size



Product weight



MT-INSPECTION

Final Random Inspection Report

Report No.: MT-20260522-004

<p>Volume test</p>	<p>Sealing test</p>
<p>Sealing test</p>	<p>Functional test</p>
	<p>N/A</p>
<p>Functional test</p>	<p>N/A</p>
<p>33 - Item:1128</p>	



MT-INSPECTION

Final Random Inspection Report

Report No.: MT-20260522-004



Carton view



Carton view

Carton Marks	520ml Square High Borosilicate glass food container with airtight lid
Item SKU	1128
Nbr. Units	24 SETS
Carton Nbr.:	// /21
Country of Origin:	P.R.C



Carton view

N.W.: 9.6 KGS
 G.W.: 10.59 KGS
 C/N MESA: 43.8x29.7x29.1 CM



Open the carton



Product view



Product view



Final Random Inspection Report



Product view



Product view



Product view



Product view



Product view



Product view



Final Random Inspection Report



Product view



Product view



Product view



Product view



Product size



Product size



MT-INSPECTION

Final Random Inspection Report

Report No.: MT-20260522-004



Product size



Product weight



Volume test



Sealing test



Sealing test



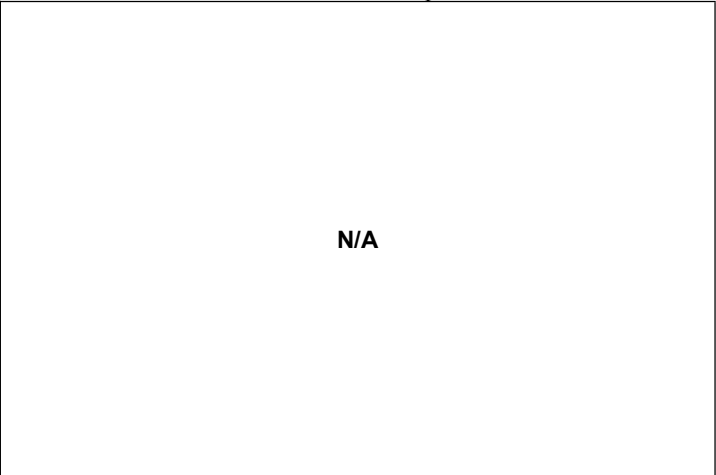
Functional test



Final Random Inspection Report



Functional test



N/A

N/A

34 - Item:1129



Carton view



Carton view

Carton Marks	800ml Square High Borosilicate glass food container with airtight lid
Item SKU:	1129
Nbr. Units	12 SETS
Carton Nbr.:	4 / 42
Country of Origin:	P.R.C



Carton view

FRAGILE VIDRIO
HANDLE WITH CARE

N.W.: 6.24 KGS
G.W.: 6.76 KGS
C/N MESA: 33.6x33.6x24.8 CM



Open the carton



Final Random Inspection Report



Product view



Product view



Product view



Product view



Product view



Product view



MT-INSPECTION

Final Random Inspection Report

Report No.: MT-20260522-004



Product view



Product view



Product view



Product view



Product view



Product view



Final Random Inspection Report



Product size



Product size



Product size



Product weight



Volume test



Sealing test



MT-INSPECTION

Final Random Inspection Report

Report No.: MT-20260522-004



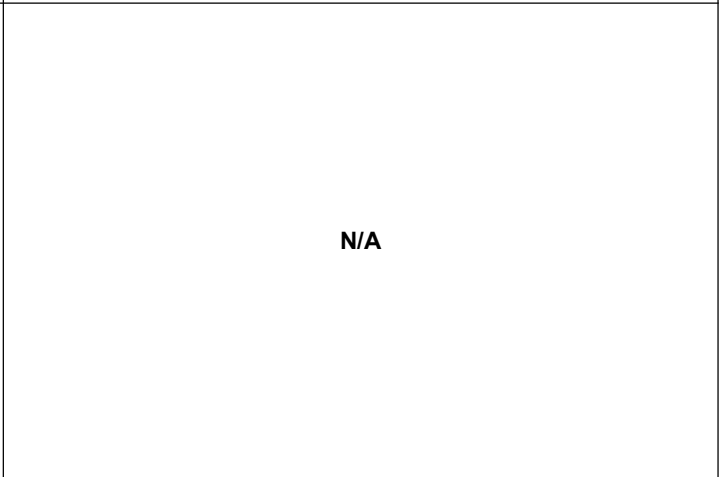
Sealing test



Functional test



Functional test



N/A



N/A

Other photos



Factory gate



Carton storage



Final Random Inspection Report



Carton storage



Carton storage



Carton storage



Carton storage



Carton storage



Carton storage



Final Random Inspection Report



Carton storage



Carton storage



Carton storage



Carton storage



Inspection site

N/A

N/A

N/A

--The End Of Report--